

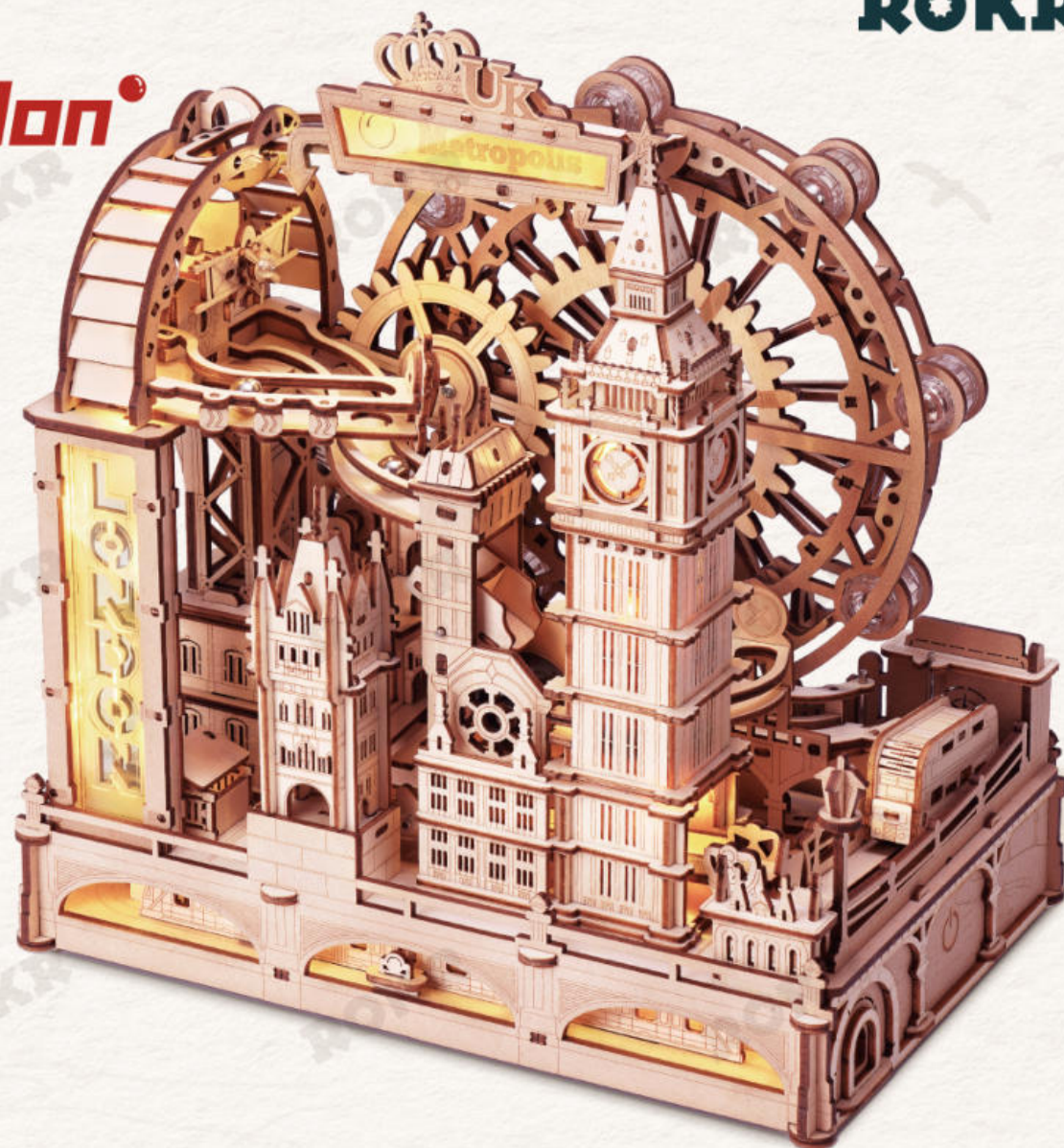


Amusing Table Game

ROKR

Marble Travel • London

EGB01

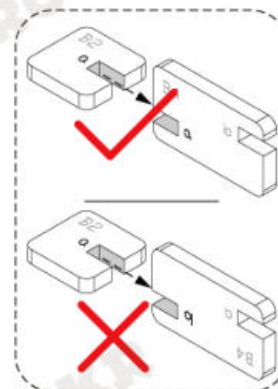


Assembly Instruction

⚠ WARNING:

1. Not suitable for children under 3 years old.
2. The product shall only be used with a transformer for product or a power supply for it.
3. The transformer or power supply is not a toy or model.
4. The power supply used with the electric toy shall be regularly examined for damage to the supply cord, plug, enclosure or other parts, and in the event of damage, it shall not be used until the damage has been repaired.
5. Do not connect the wire to output socket.

6. The product is not to be connected to more than the recommended number of power supplies.
7. If the product contains motor, motor may be a hot component. Do not touch it to avoid burns while operating.
8. This product does not need liquid cleaning, and please clean the product with clean soft cloth.
9. The product contains sharp points or sharp edges, please beware of injury.
10. The instruction must be retained since it contains important information.



NOTICE:

1. Children should be accompanied by adults while assembling.
2. The product contains small parts and electronic components. Adults should guide and supervise children in the correct use of the product to prevent ingestion or choking.
3. Please read the instructions carefully before assembly to confirm that the parts are not damaged or missing.
4. Please carefully read the instruction book when assembling and keep it properly for later verification.
5. There are letters on some parts as shown and assemble them together with the same letters.
6. For some complicated steps, please scan the QR code with remind for assembling videos.
7. There is a little difference between several parts and the pictures on instruction, subject to parts number.
8. Please don't clean this product with chemical cleaners: alcohol, ammonia water, glass cleaner, etc.
9. Please clean the product with clean soft cloth, and sand the board burr lightly with sandpaper.
10. Please keep the product away from substances flammable and humid environments to prevent damage.

FAQs

Problem	Cause	Solution
1. It's hard to assemble parts. What should I do?	1. Some of the transmission-related fixings are slightly tighter and can be pressed with the aid of a tool.	1. Check if there are any mistakes in assembly, ensuring that the buckles are properly aligned and checking for any misalignment or tilting. 2. Use tool J7 to assist in pressing the part.
2. The light does not turn on when connected to the power supply or the Ferris wheel does not rotate when the switch is tapped.	1. The USB power adapter does not match the product. 2. Terminals are not inserted into the corresponding slots or are inserted backwards.	1. Try a different USB power adapter. 2. Remove Part L10, try to unplug the terminals, check if the terminals are loose or plugged in backwards, remove the problem and reassemble L10.
3. The ball does not travel the full length of the track and there is stagnation.	1. Check that the buckle is pressed in place.	1. Check that each track buckle is pressed in place.
4. The Ferris wheel malfunctions, experiencing a sudden stop or rapid light flickering.	1. Part J9 is misplaced. 2. The steel ball is stuck in the transmission structure.	1. Slightly pull the Ferris Wheel outward and adjust the position of J9. 2. Use Ball catcher P28 to suck out the stuck ball.



Remove protective film



Ensure the connection of gears smoothly

1
P18

Part P18 in Bag No. 1



Polish the parts with sandpaper



Ensure the parts running smoothly

1

Step 1



Perspective changed

x2

Complete 2 same parts

2

Step 2



Special attention in assembly

x8

Complete 8 same parts

U9⁺

"+" means the part has spare ones



Wax the yellow parts



Printed side



The shaft sleeve should be flush with the shaft end.

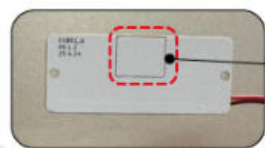
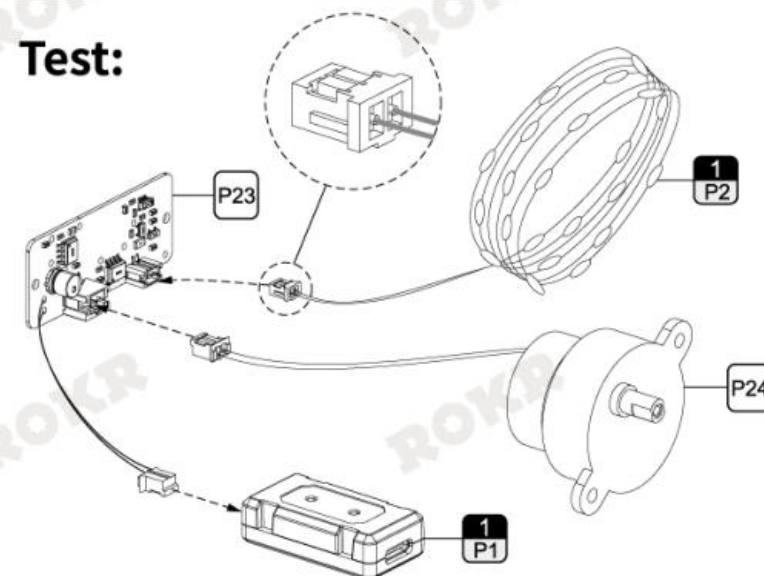


Assembly tips

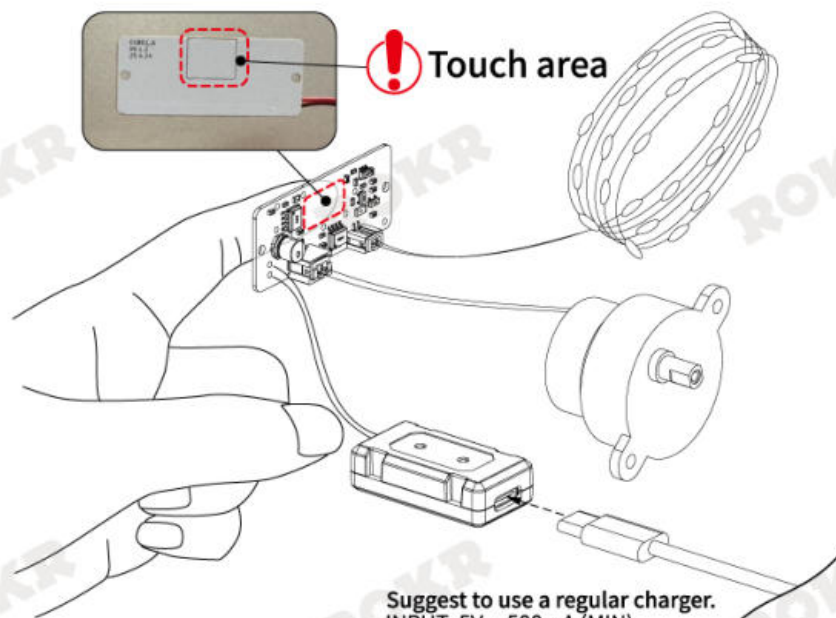


Blank side

Test:



! Touch area



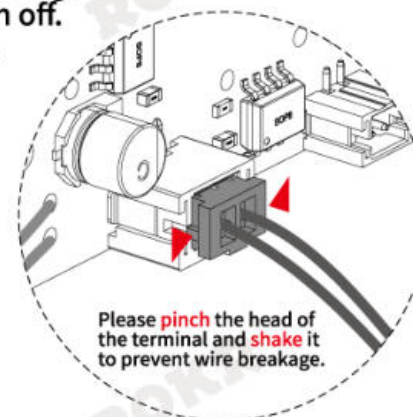
Suggest to use a regular charger.
INPUT: 5V = 500mA (MIN)



After the assembly is completed, connect to the power supply, click the touch area shown to test.

1. Click the touch area to turn on.
2. Single click on the touch area can switch mode.
Mode 1: motor rotates, lights are always on.
Mode 2: motor stops, lights are breathing.
3. Long press the touch area to turn off.

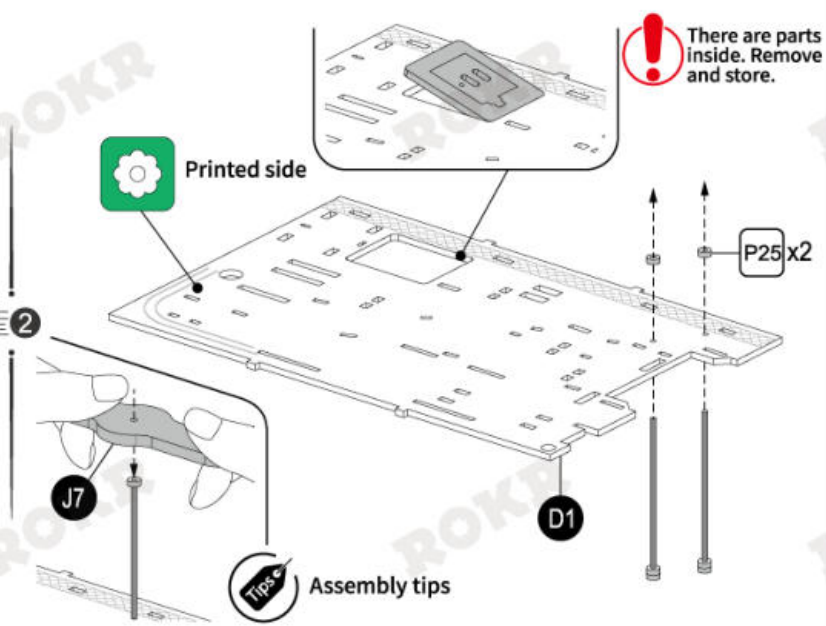
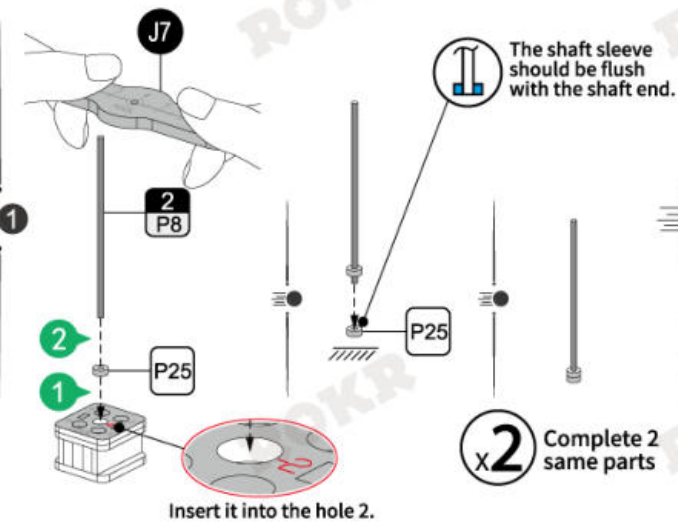
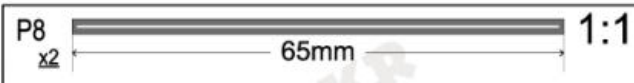
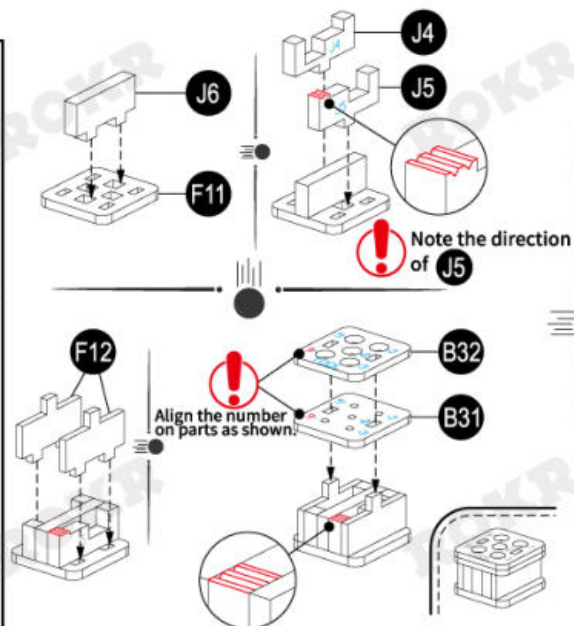
Disassemble the parts after the test is completed.



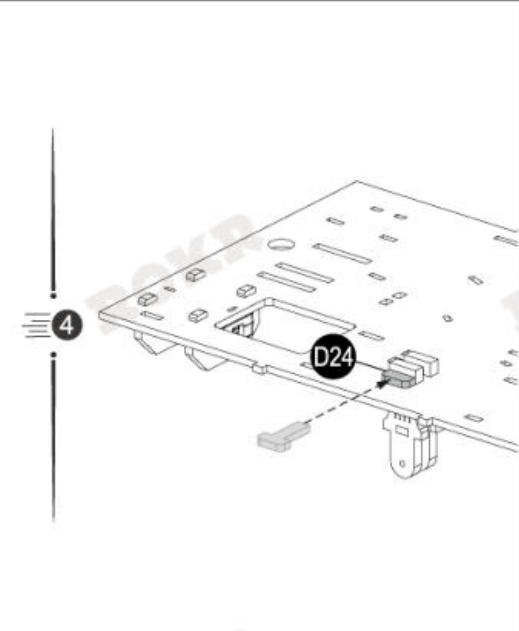
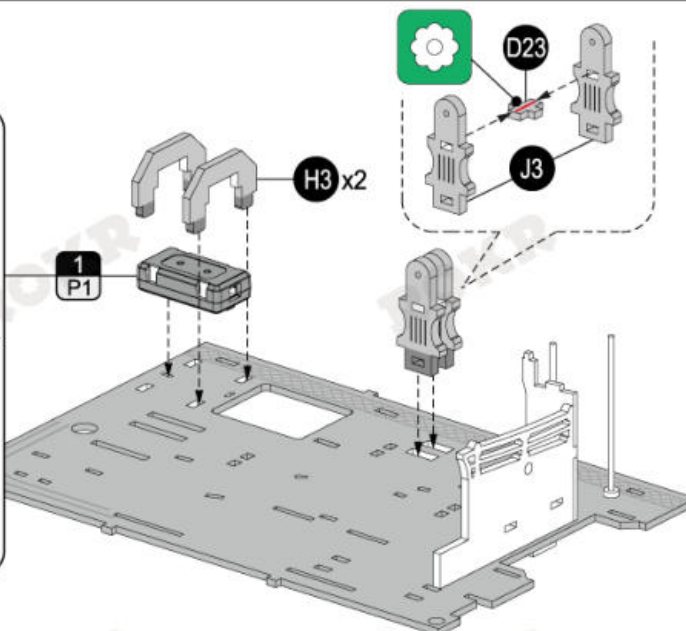
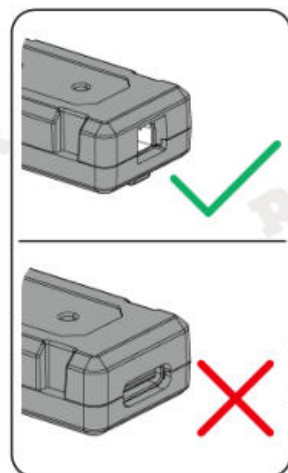
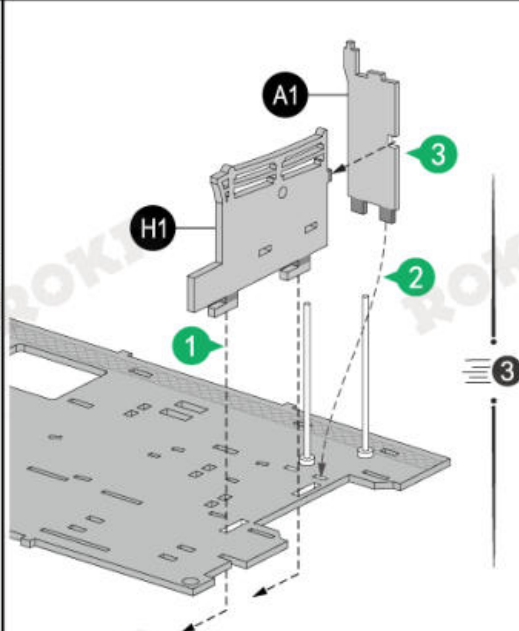
Please pinch the head of the terminal and shake it to prevent wire breakage.

1

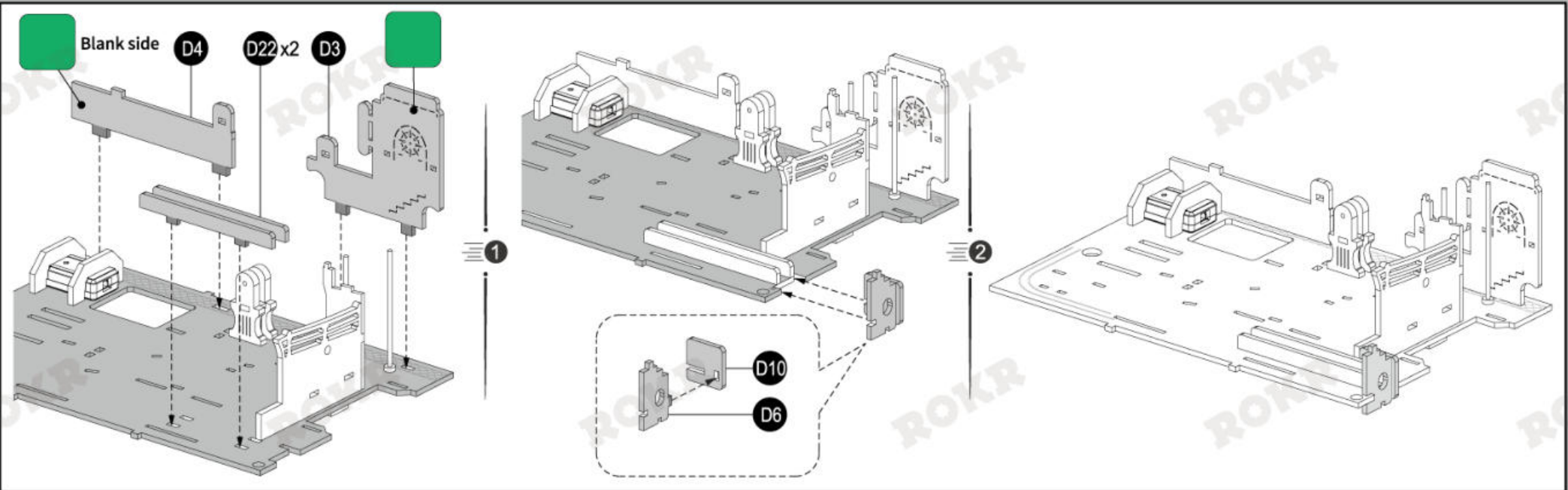
B31
B32
D1
F11
F12 x2
J4
J5
J6
J7
2 P8 x2
P25 x6



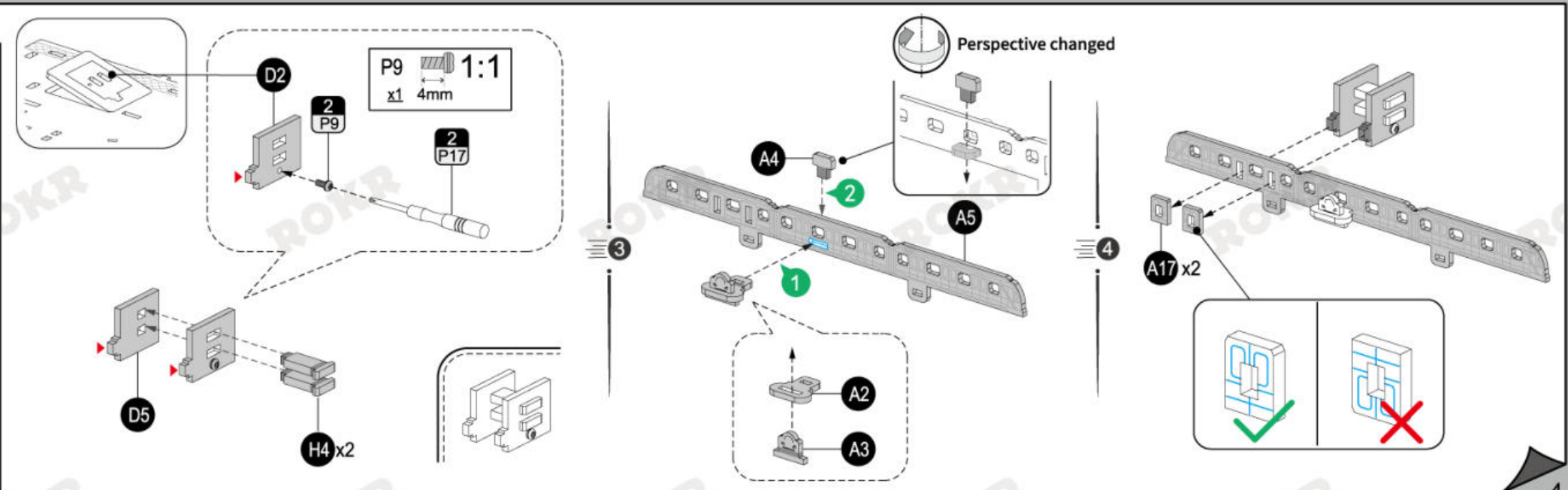
A1
D23
D24
H1
H3 x2
J3 x2
1 P1



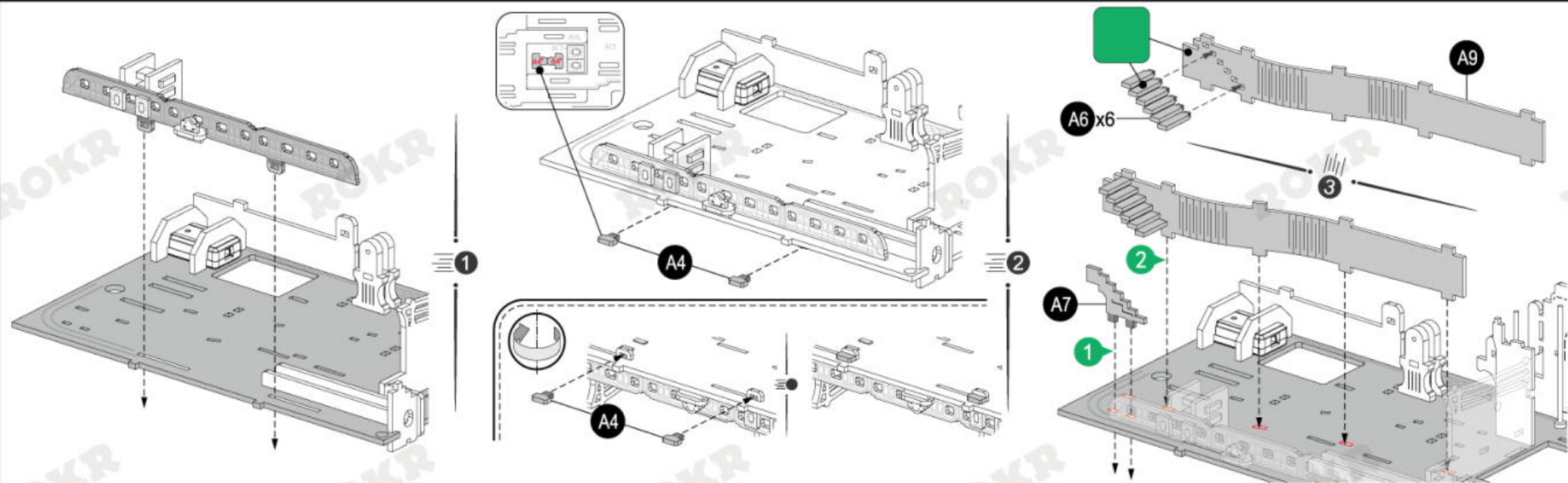
- D3
- D4
- D6
- D10
- D22 x2



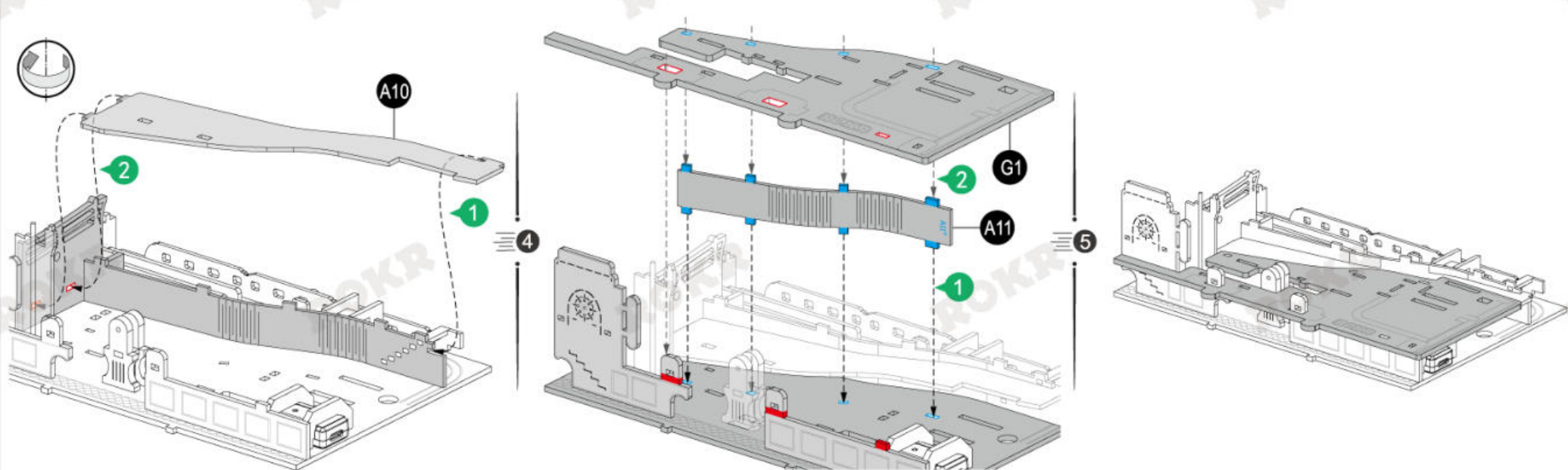
- 2
- A2
- A3
- A4
- A5
- A17 x2
- D2
- D5
- H4 x2
- 2 P9
- 2 P17



A4 x2
A6 x6
A7
A9



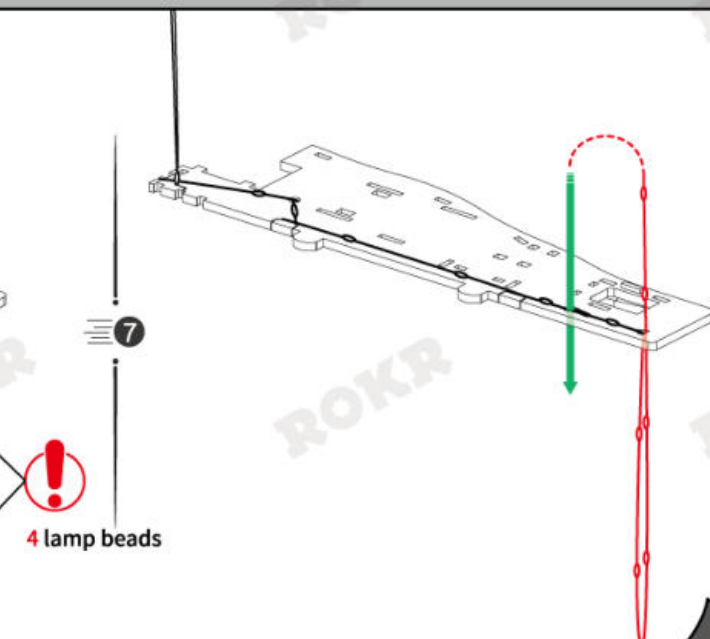
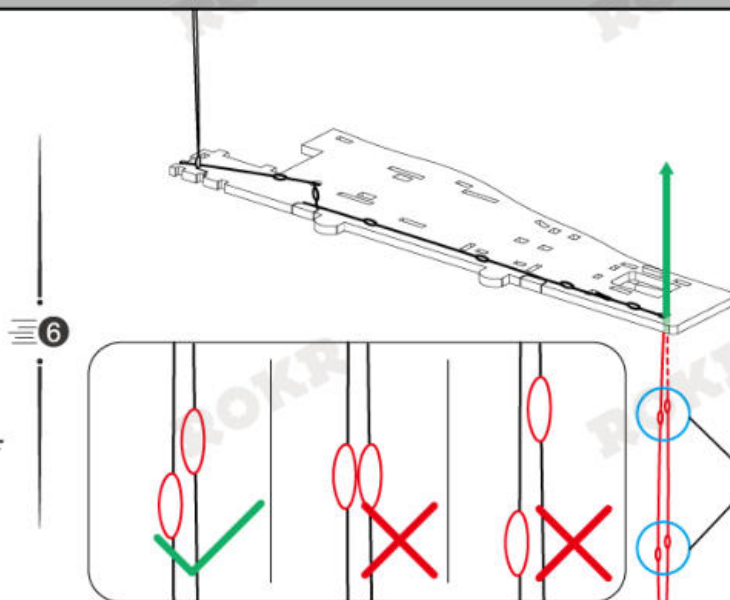
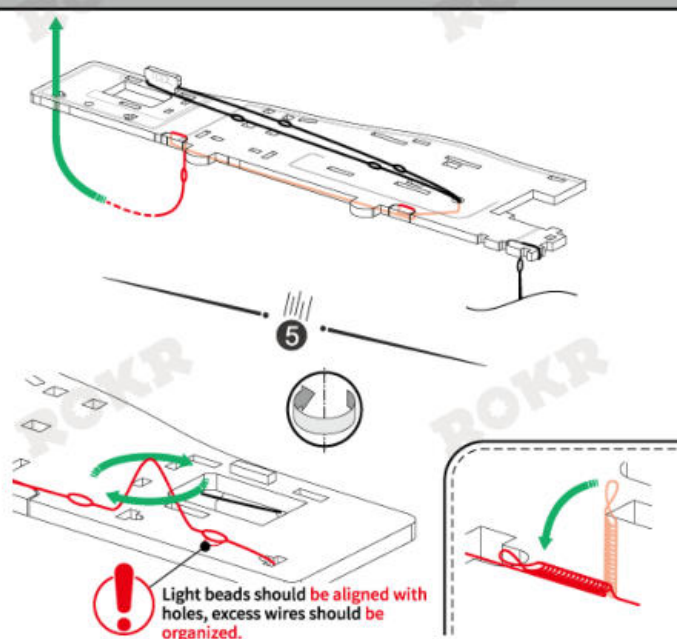
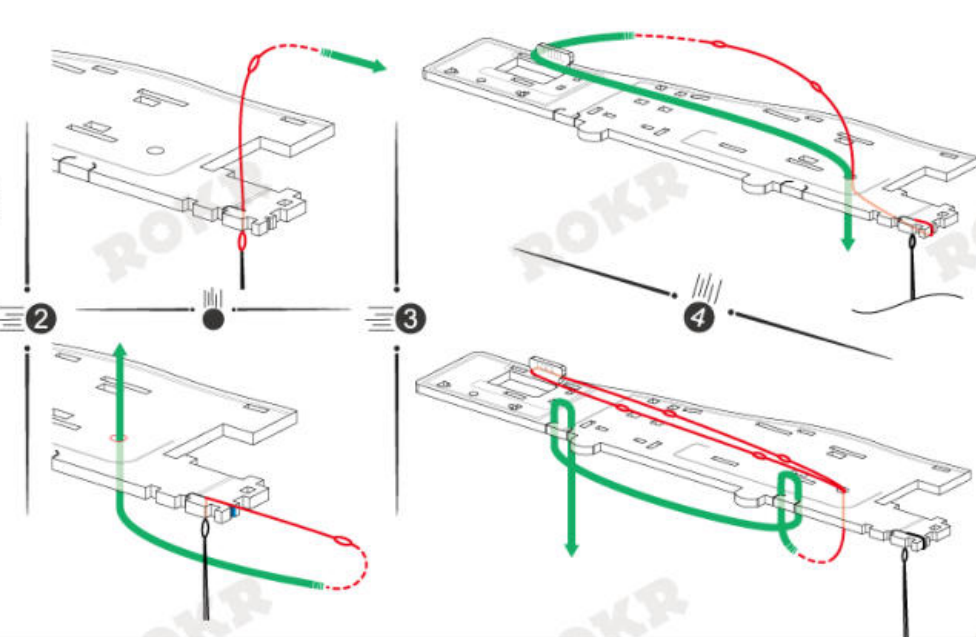
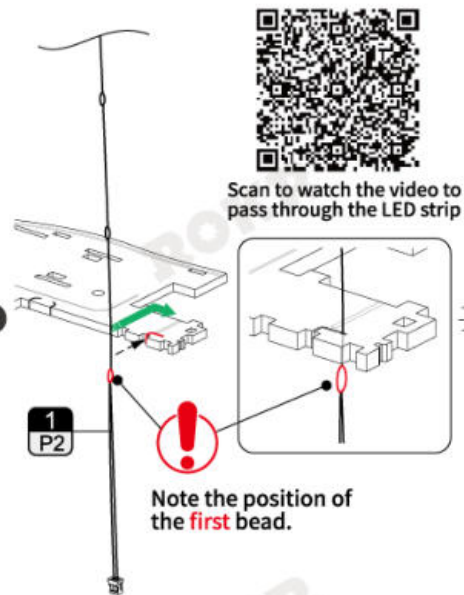
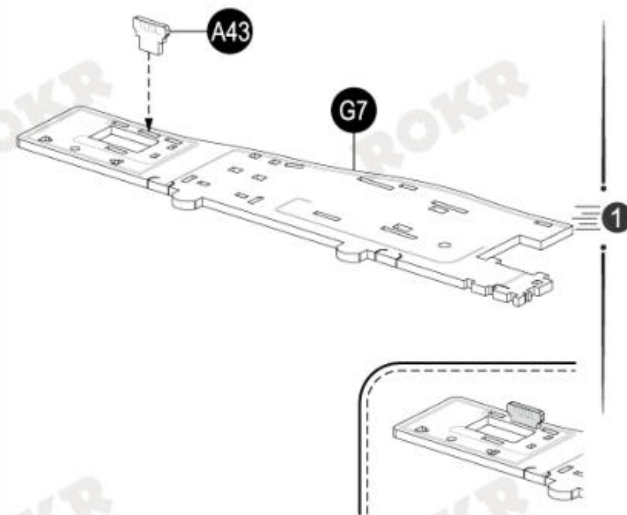
A10
A11
G1



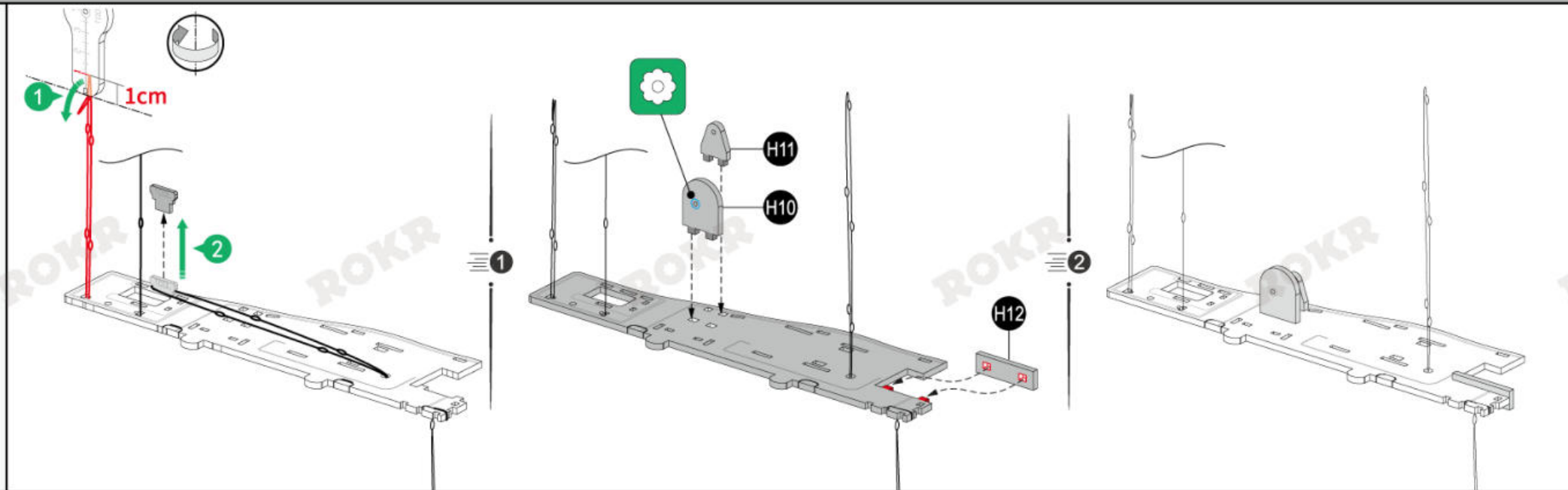
3

A43

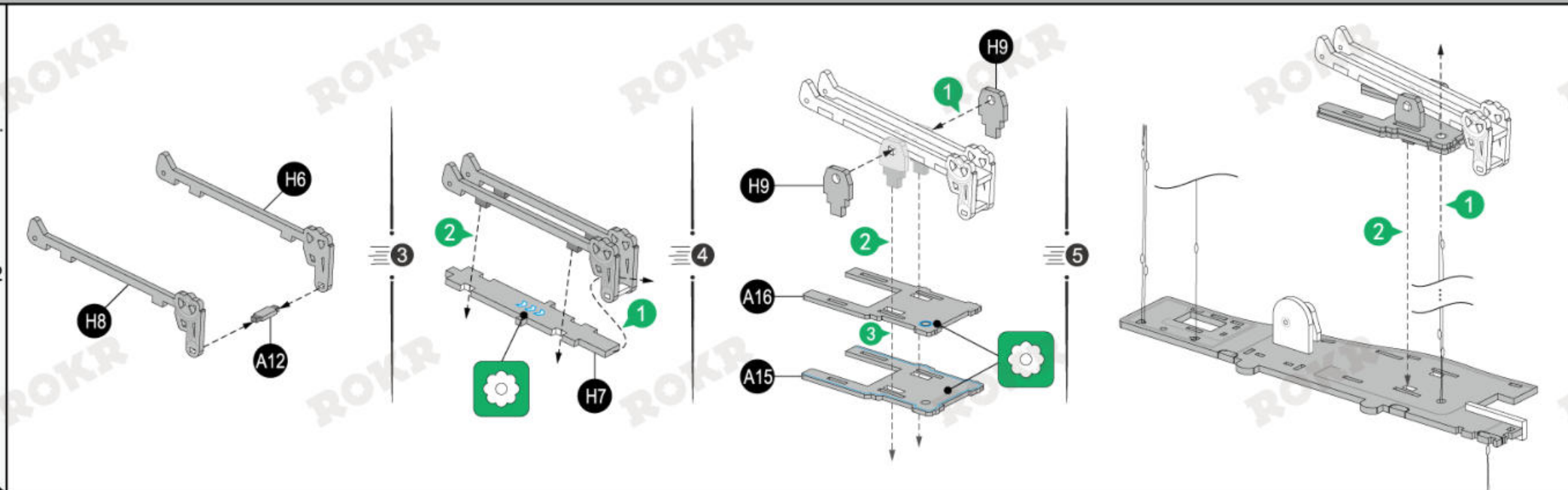
G7

1
P2

H10
H11
H12



A12
A15
A16
H6
H7
H8
H9 x2



A13

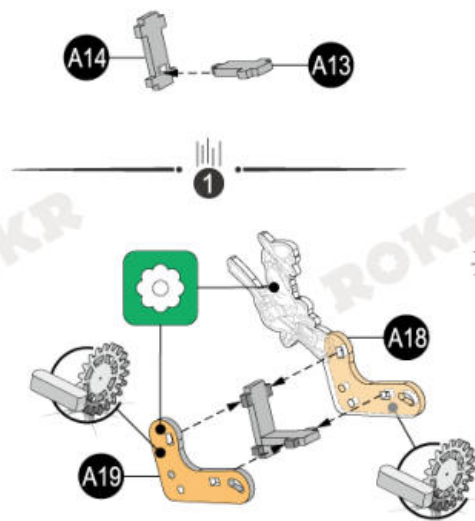
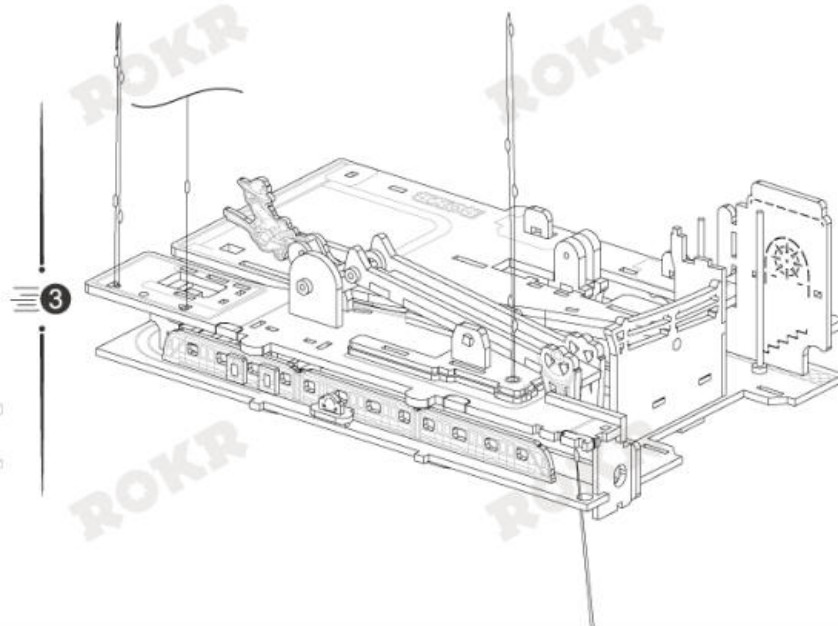
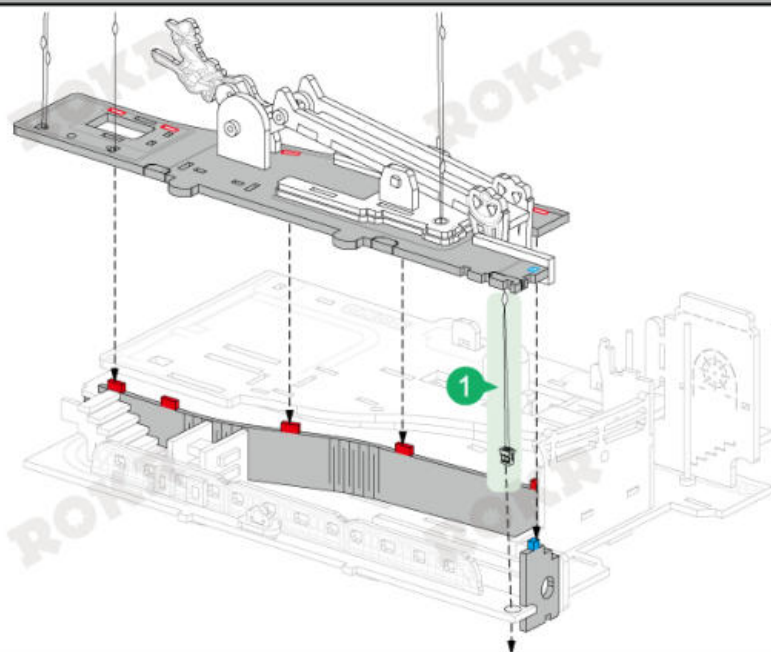
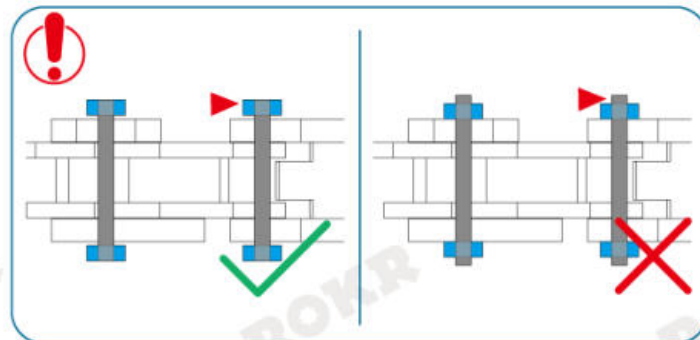
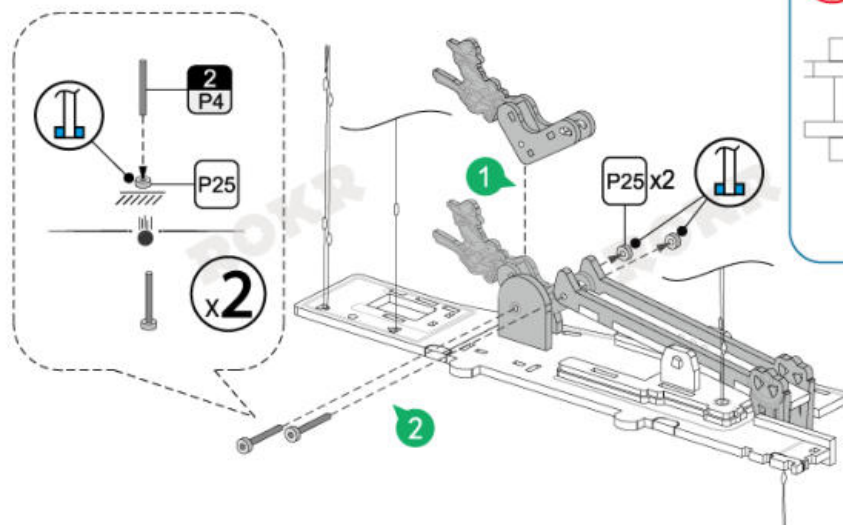
A14

A18

A19

2
P4 x2

P25 x4

P4
x2 20mm 1:1

4

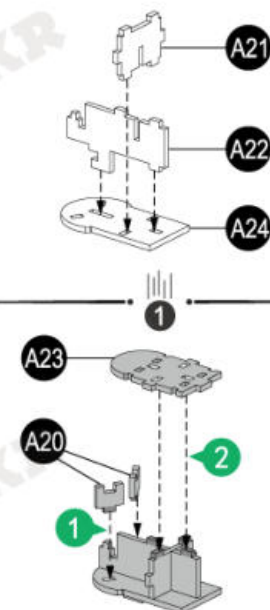
A20 x2

A21

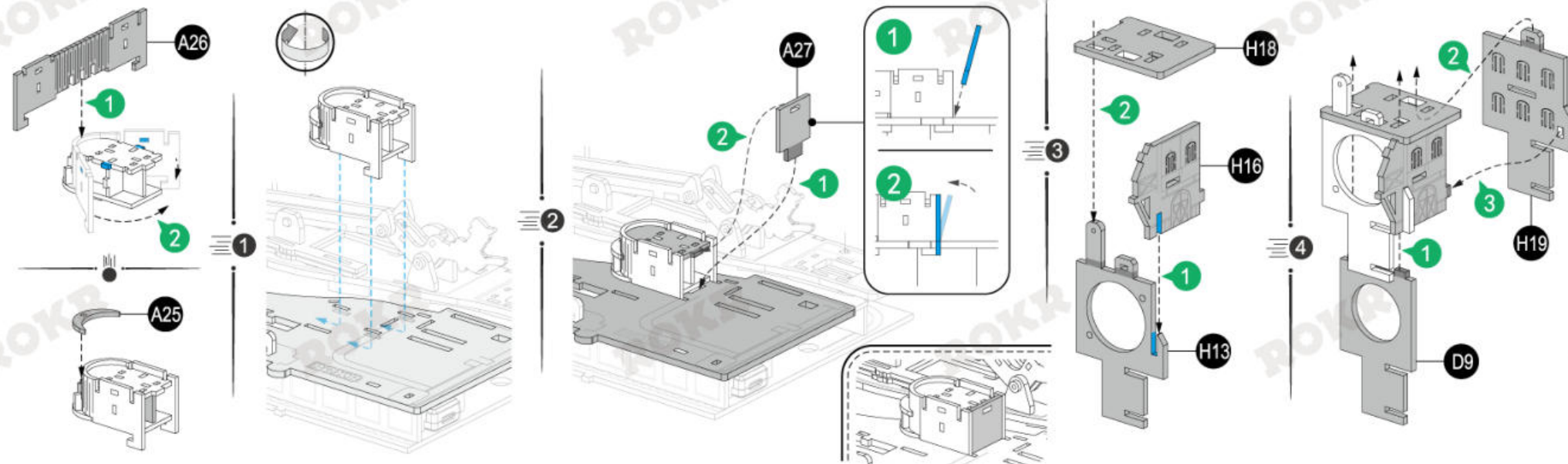
A22

A23

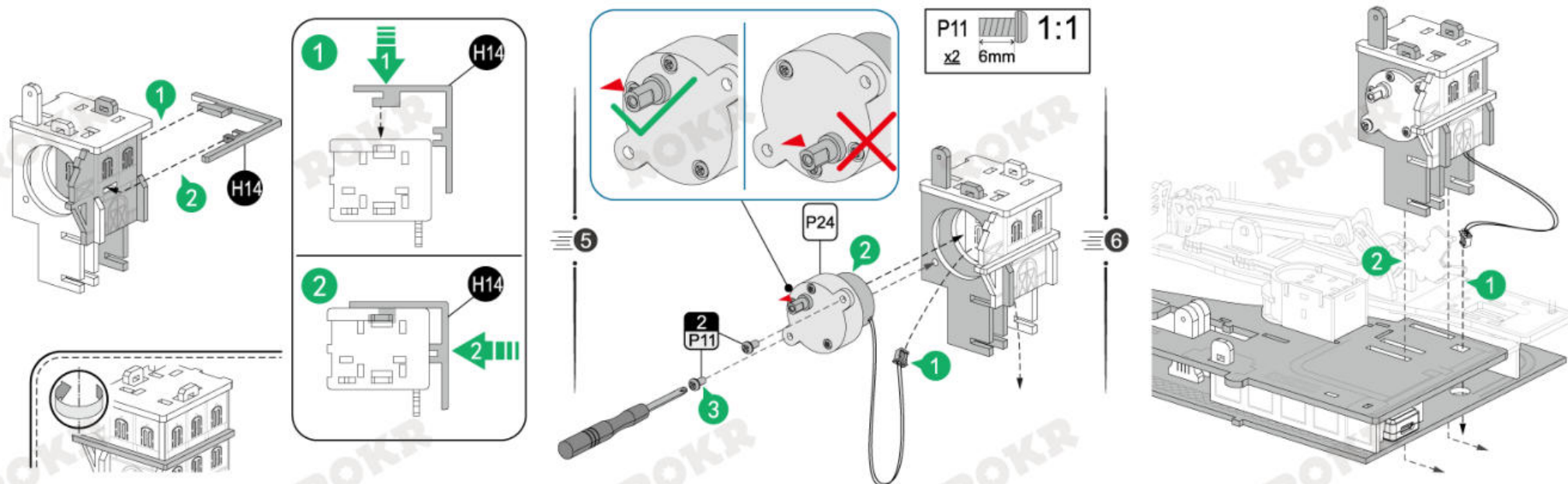
A24



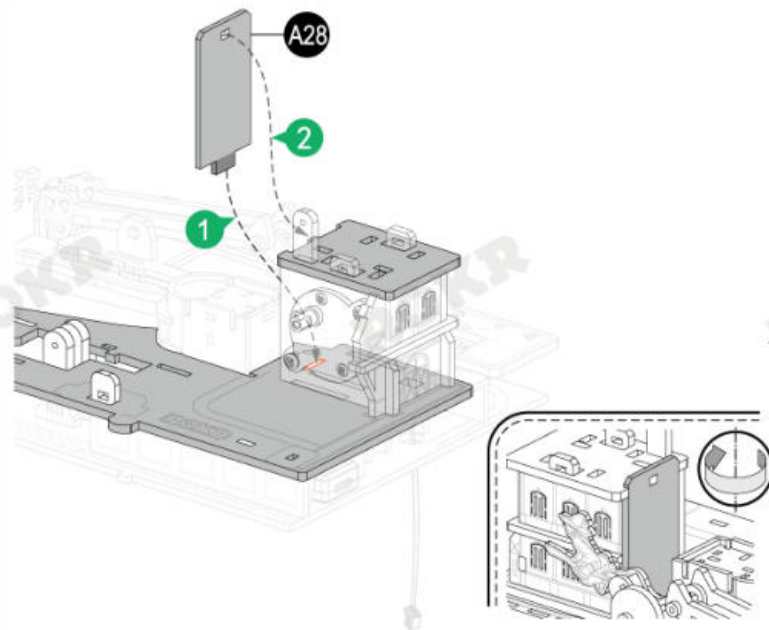
A25
A26
A27
D9
H13
H16
H18
H19



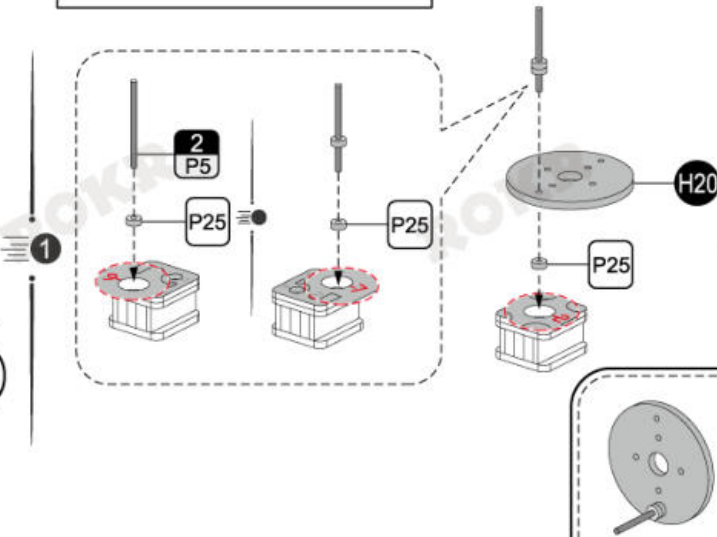
H14
2
P11 x2
P24



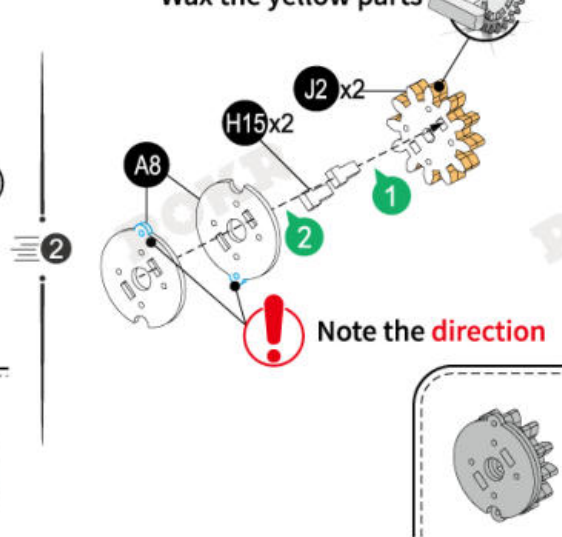
A8 x2
A28
H15 x2
H20
J2 x2
2 P5
P25 x3



P5 x1 30mm 1:1



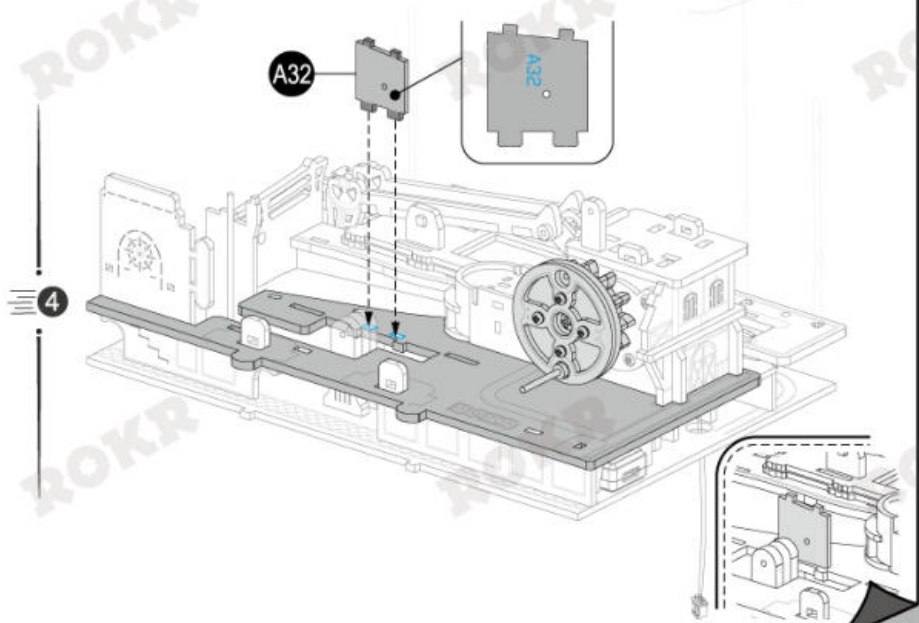
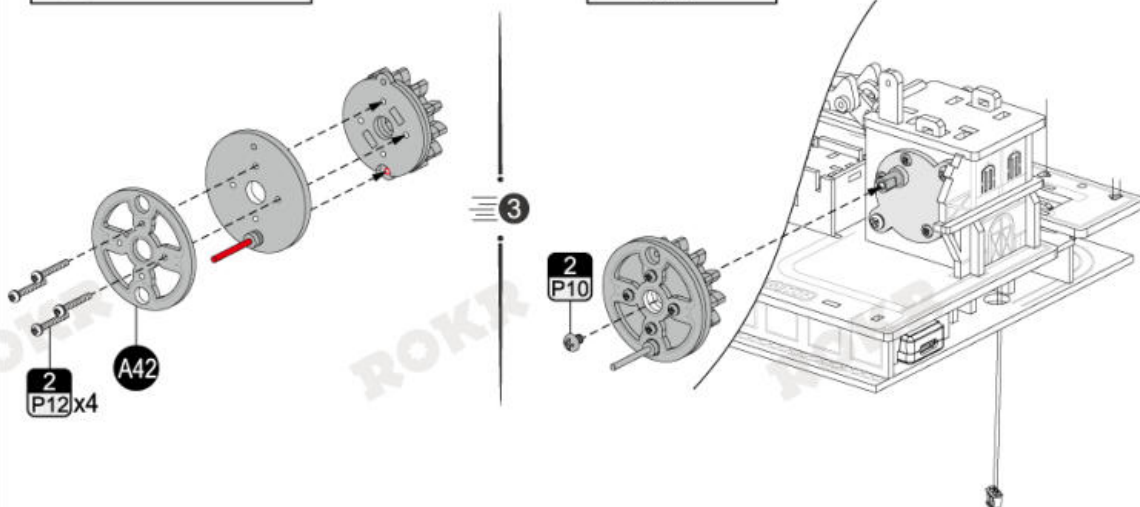
Wax the yellow parts



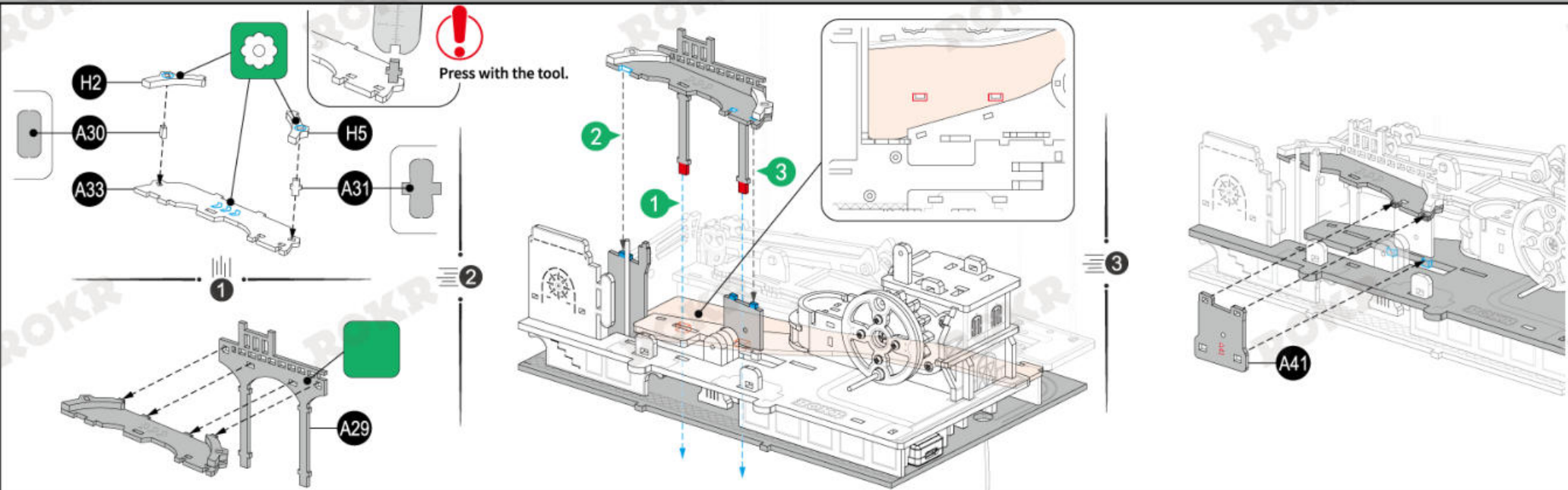
A32
A42
2 P10
2 P12 x4

P12 x4 15mm 1:1

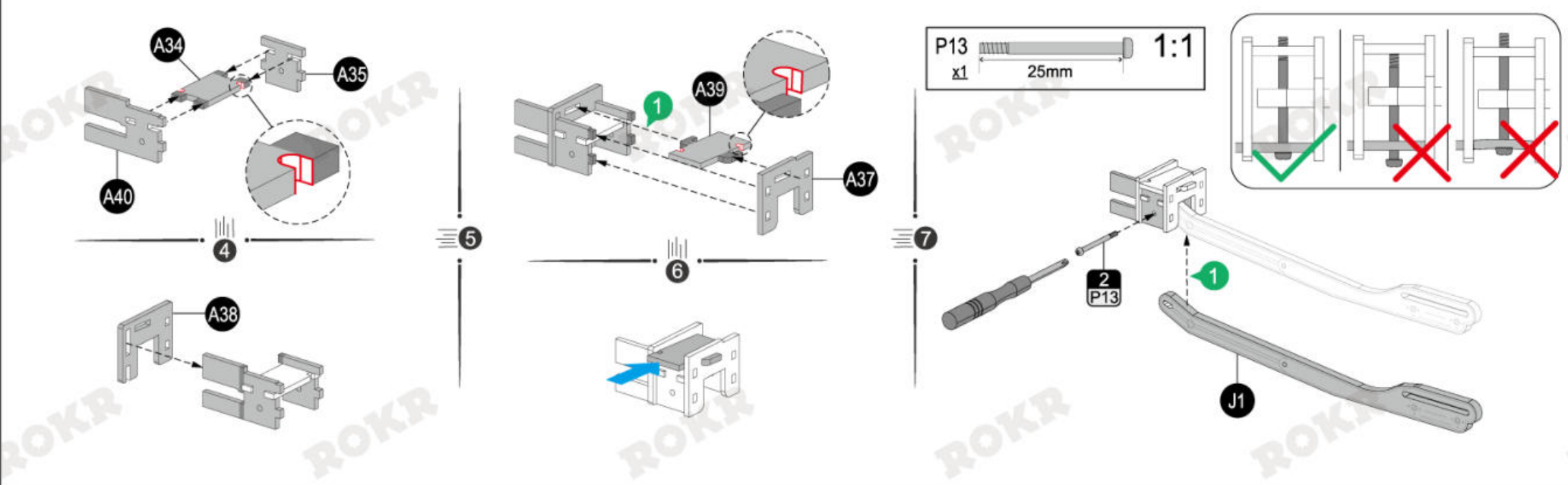
P10 x1 4mm 1:1



A29
A30
A31
A33
A41
H2
H5



A34
A35
A37
A38
A39
A40
J1
2
P13



A36x2

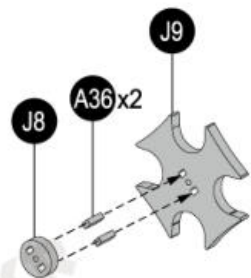
B1

B6

H17

J8

J9

2
P13

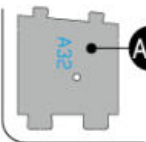
1

2
P13

4

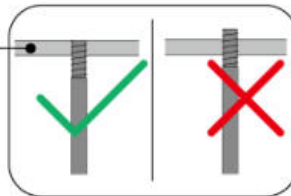
2

3

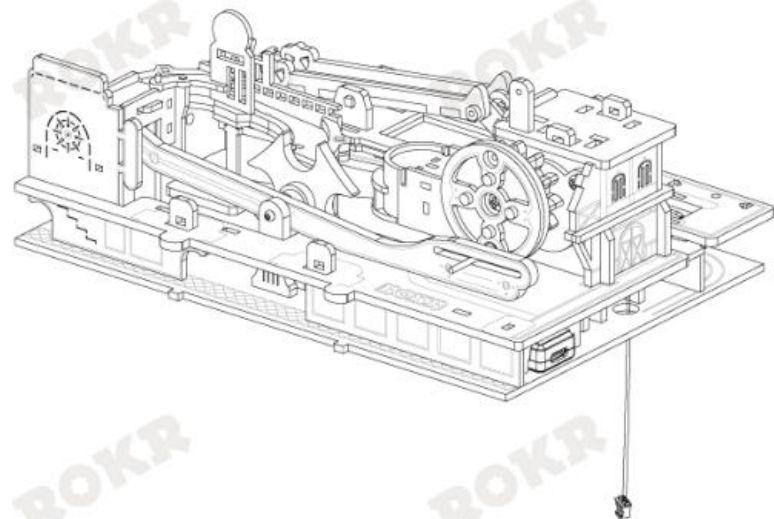
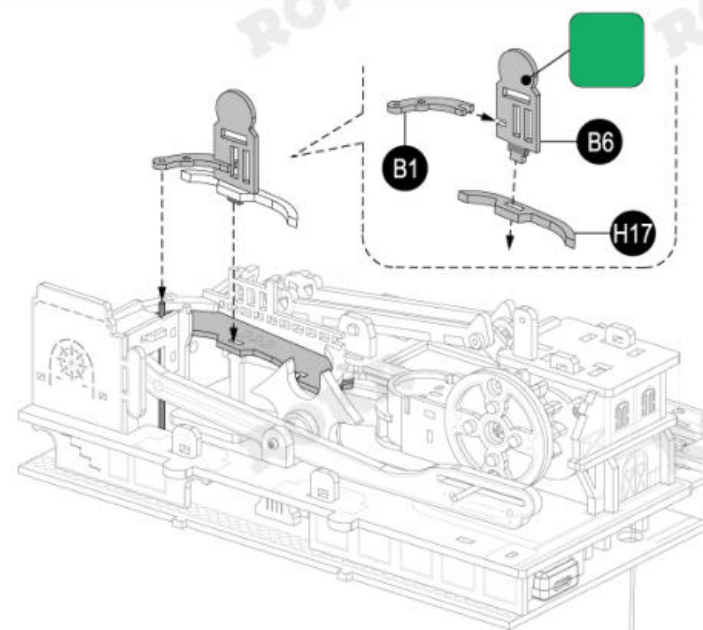
P13
x1 25mm 1:1

A32

A32



2



5

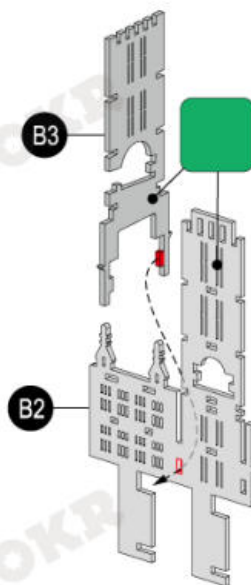
B2

B3

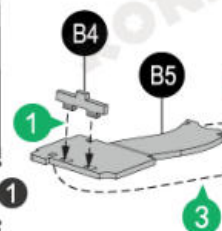
B4

B5

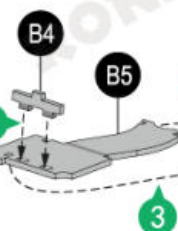
G2



1



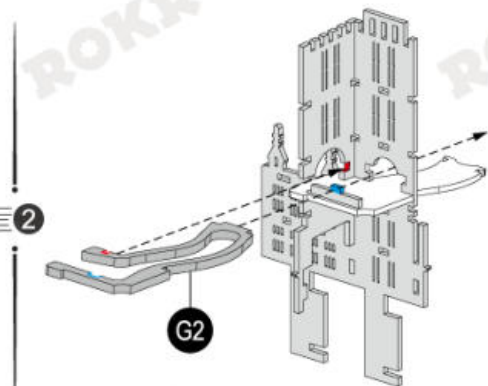
1



2

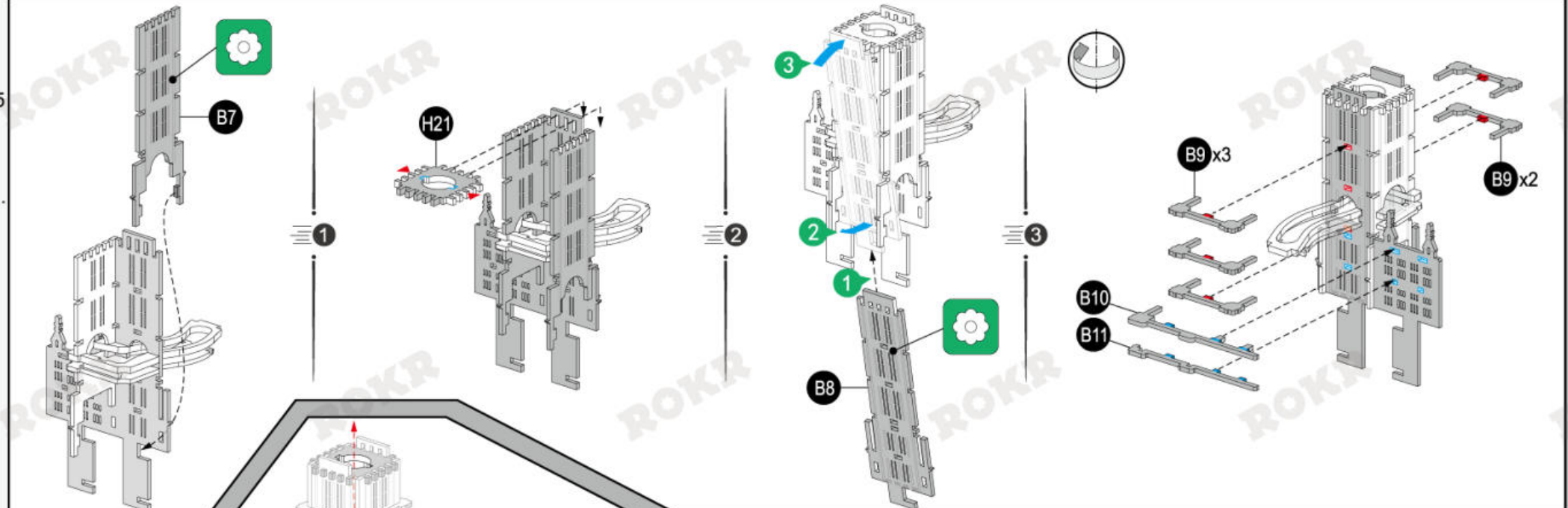


2

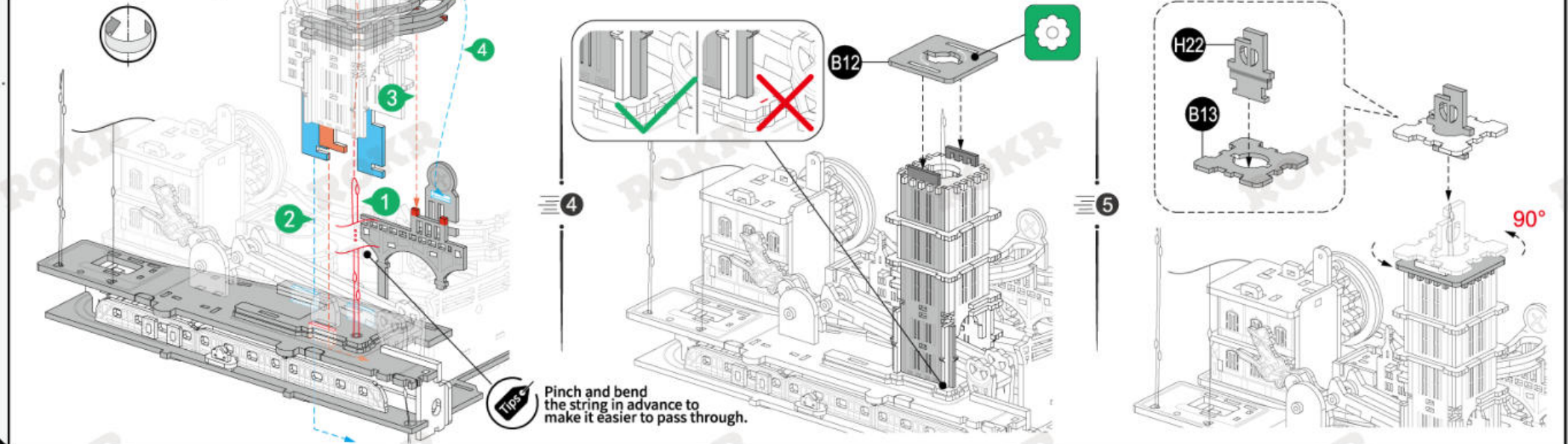


G2

B7
B8
B9 x5
B10
B11
H21



B12
B13
H22



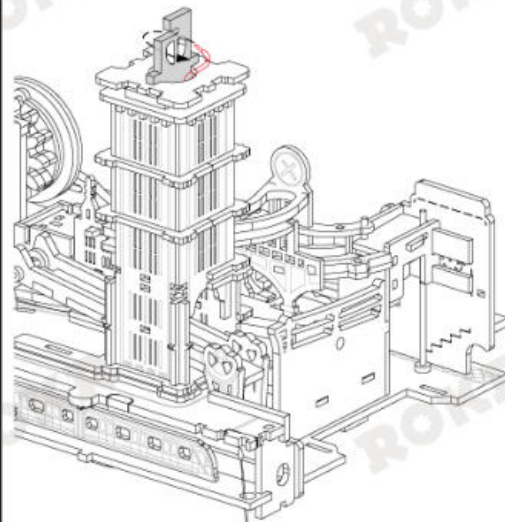
G3

2
P10

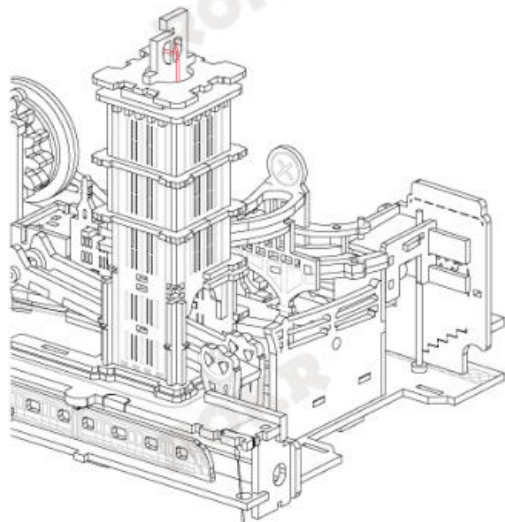
2
P14

2
P15

3
P18

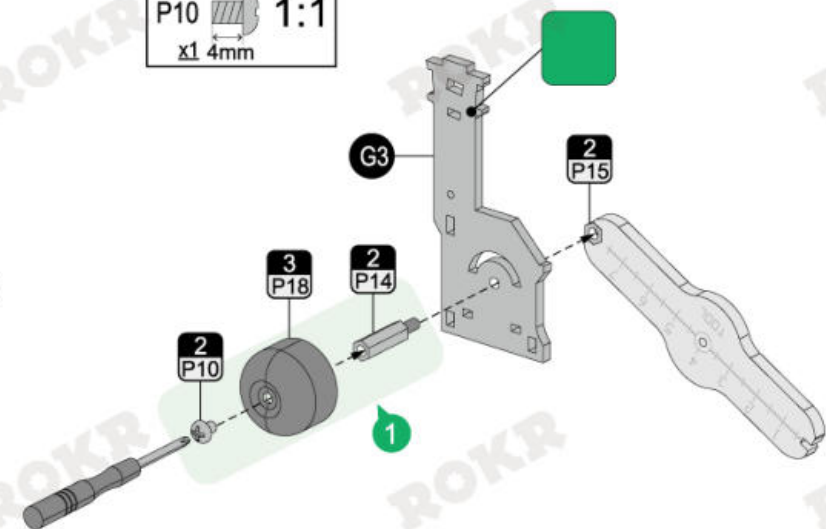


1



2

P10 1:1
x1 4mm



B14x2

B15

B16

D7

D8

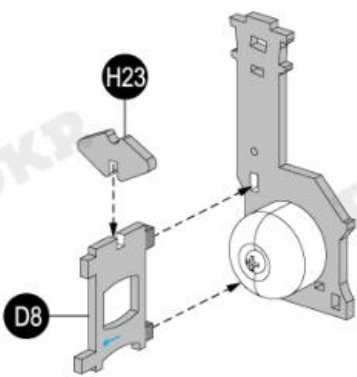
G4

H23

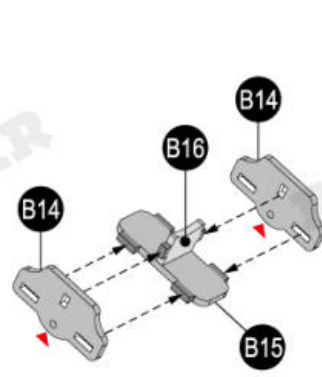
2
P5

P25x2

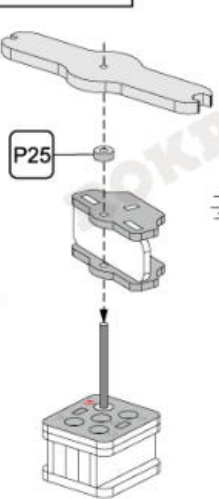
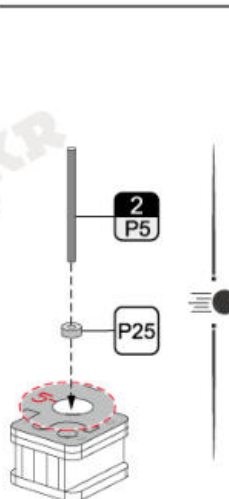
P5 1:1
x1 30mm



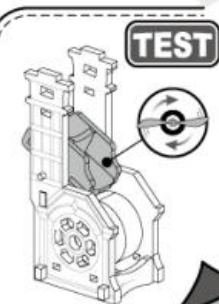
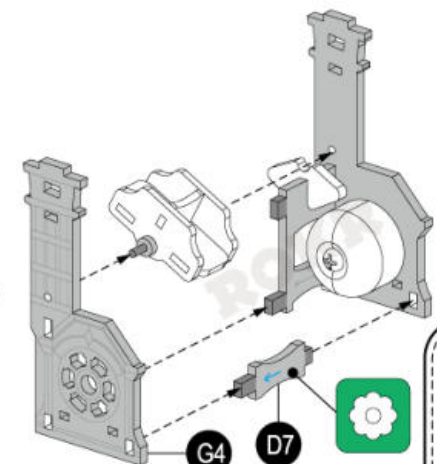
3



4

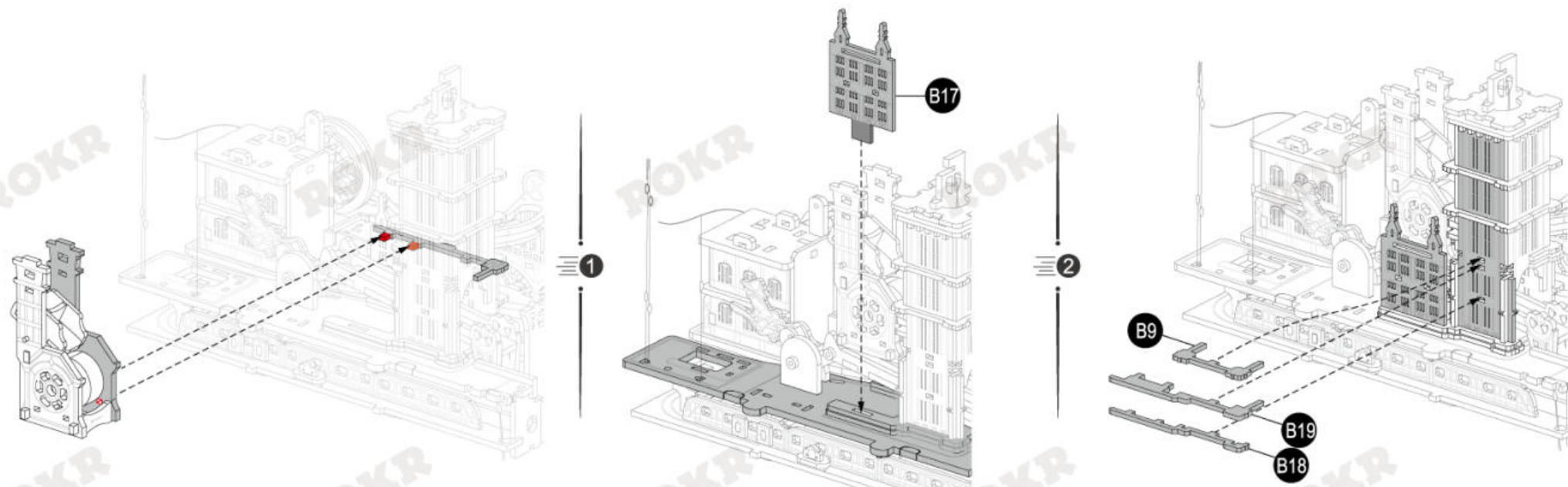


5

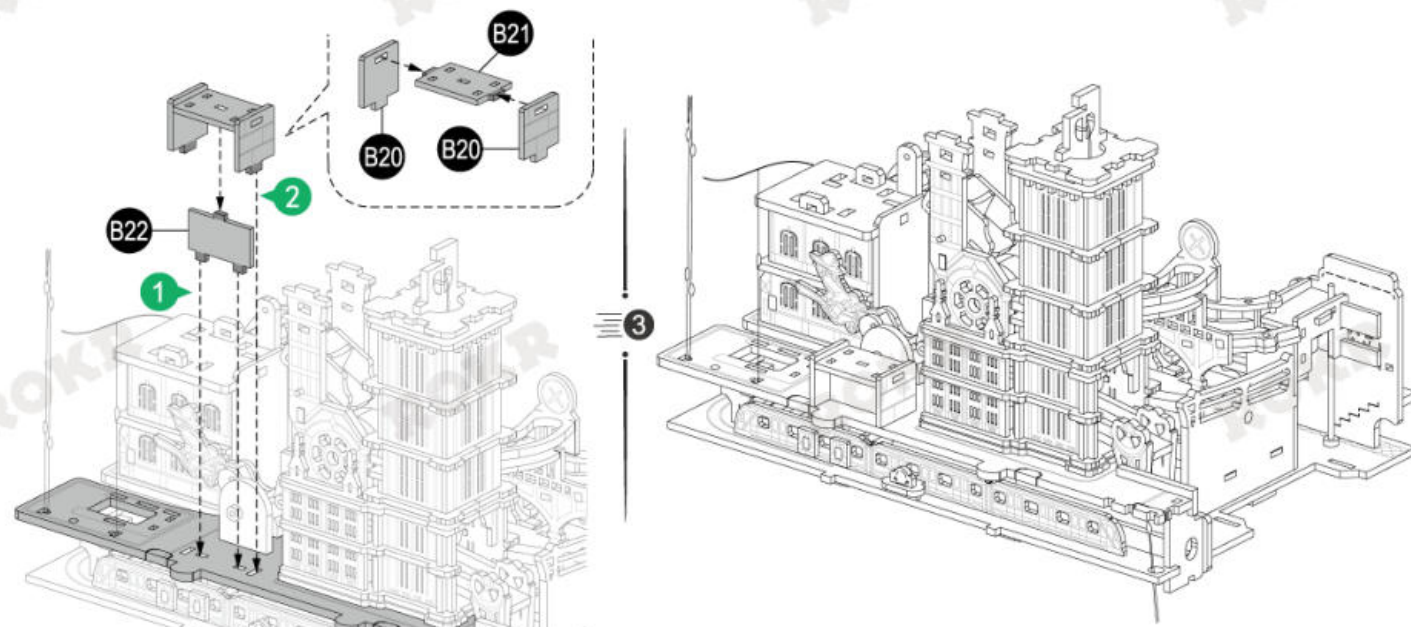


TEST

B9
B17
B18
B19

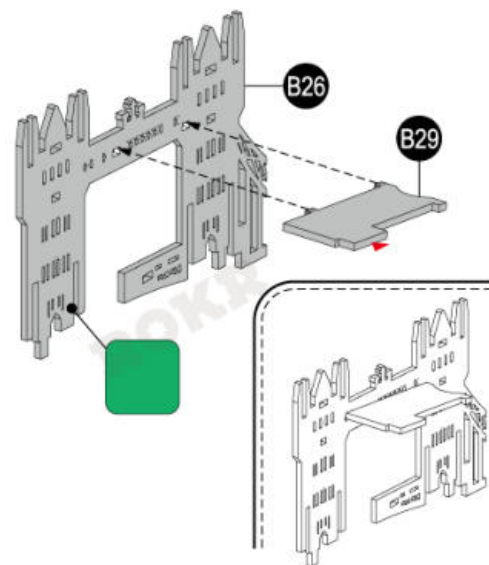


B20 x2
B21
B22



6

B26
B29



B23

B24 x2

B25 x2

B27 x2

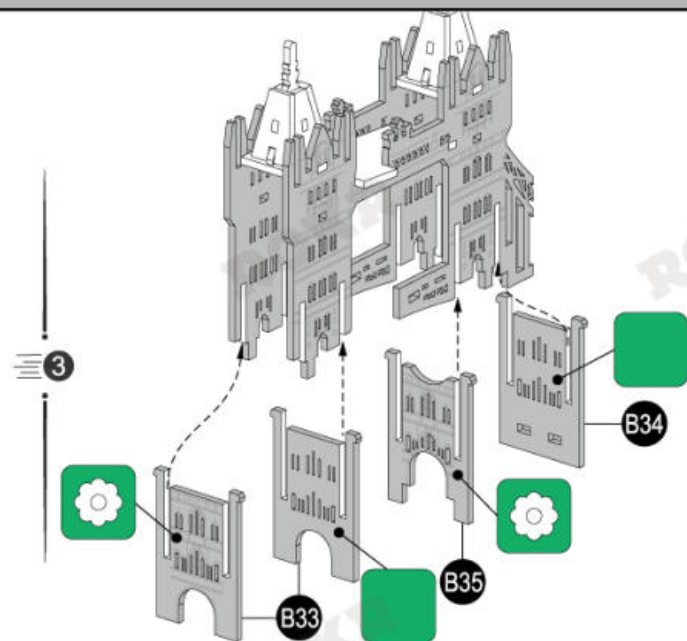
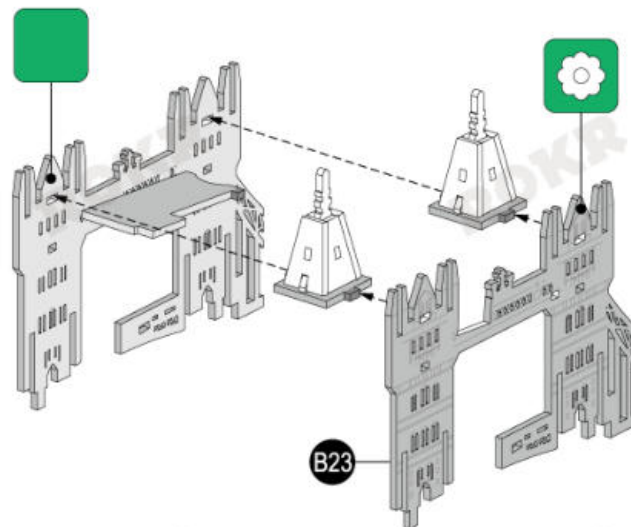
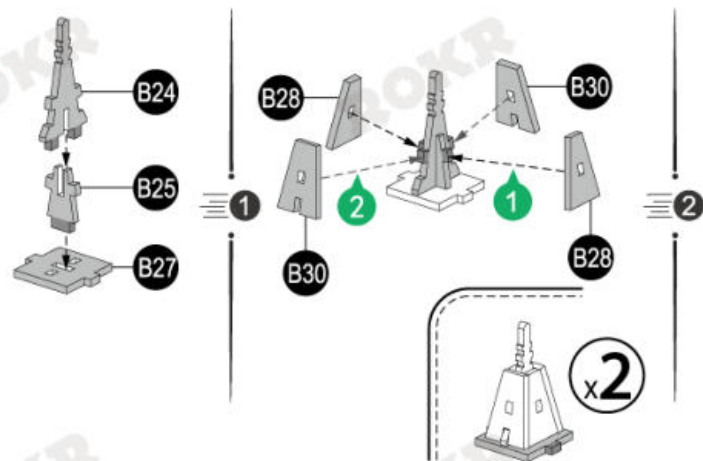
B28 x4

B30 x4

B33 x2

B34

B35

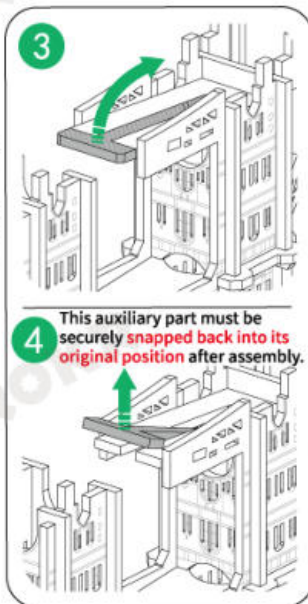
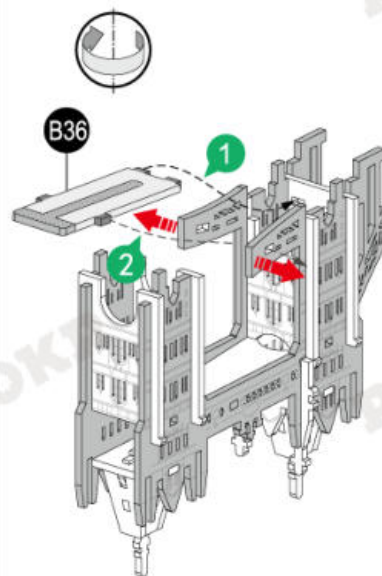


C1 x3

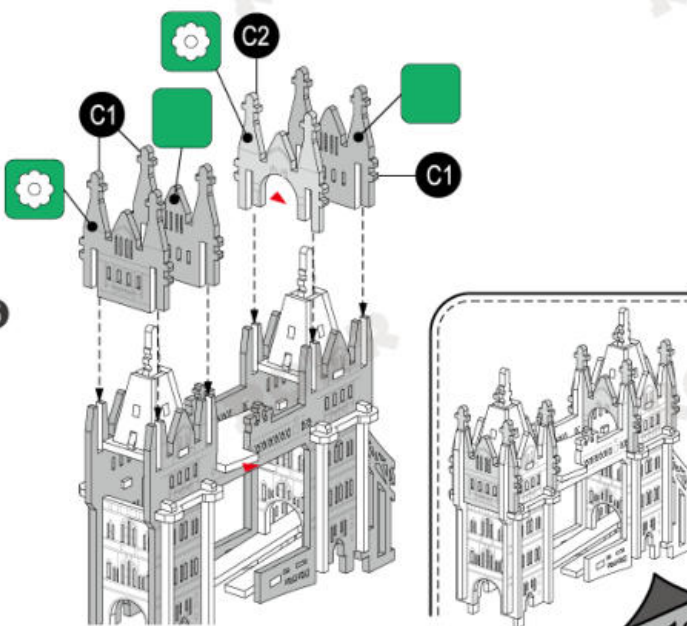
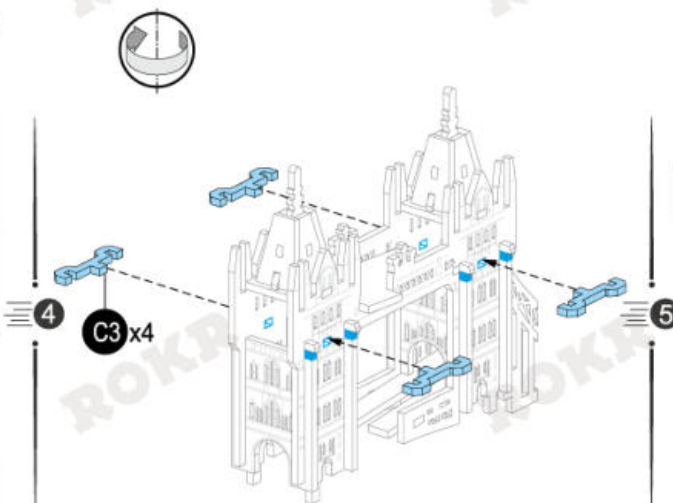
C2

C3 x4

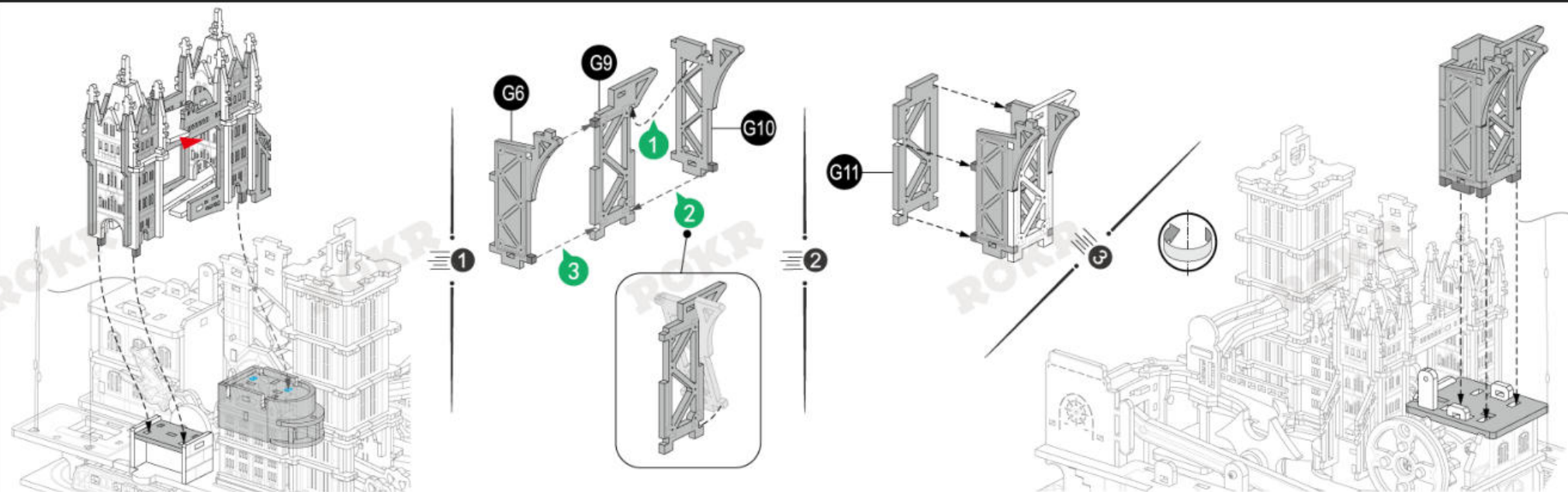
B36



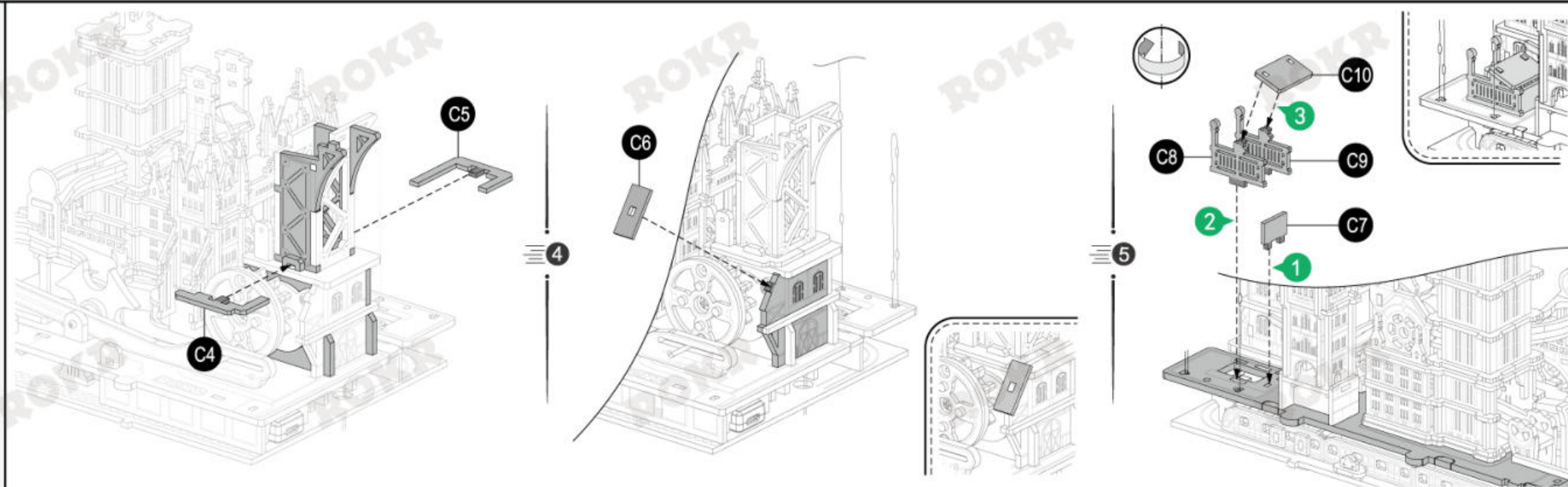
This auxiliary part must be securely snapped back into its original position after assembly.



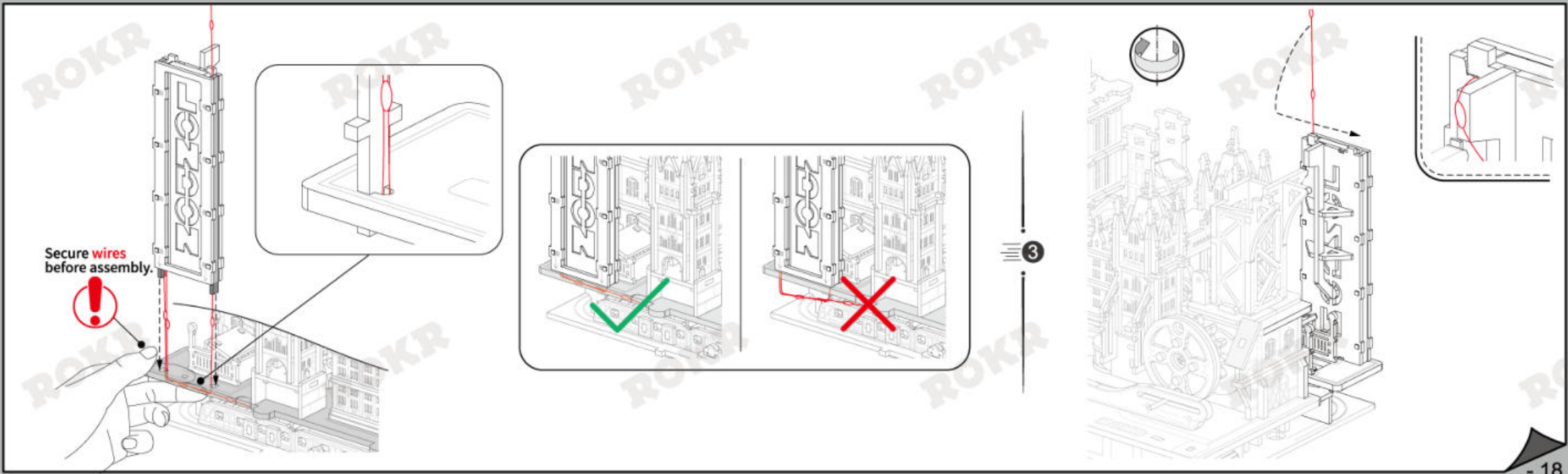
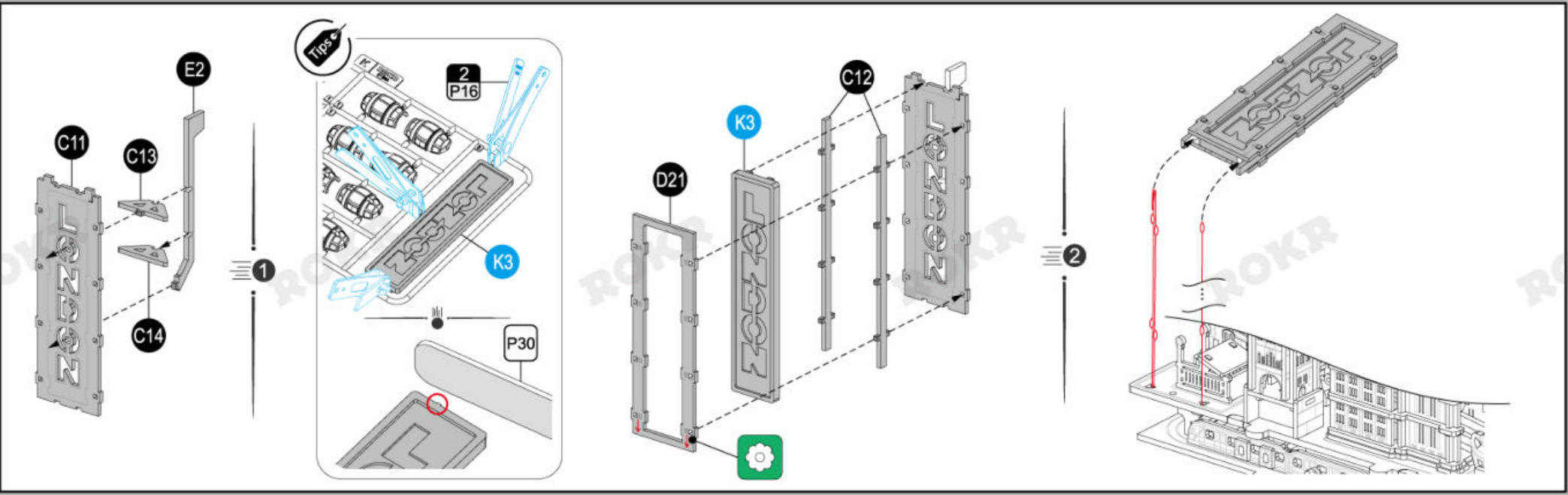
G6
G9
G10
G11



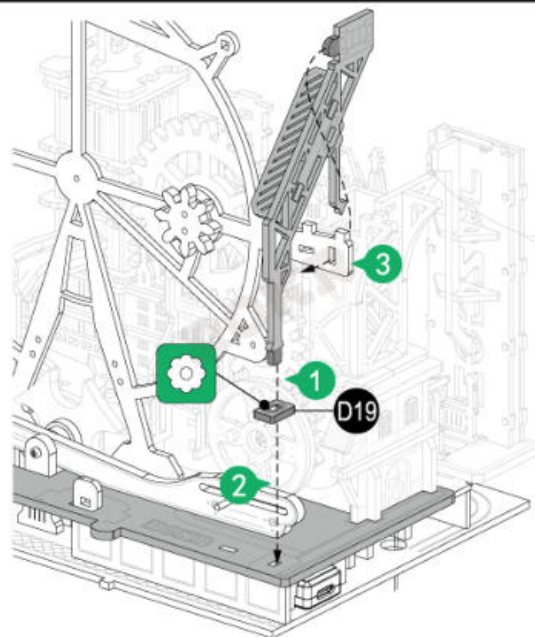
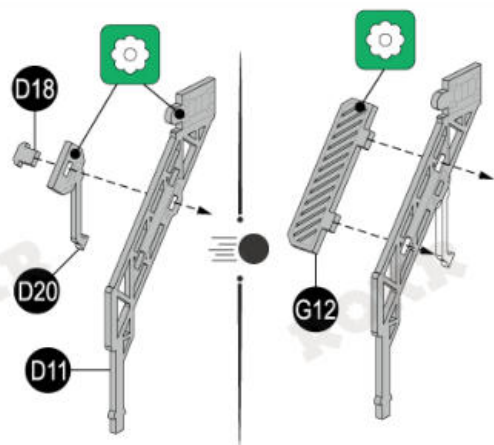
C4
C5
C6
C7
C8
C9
C10



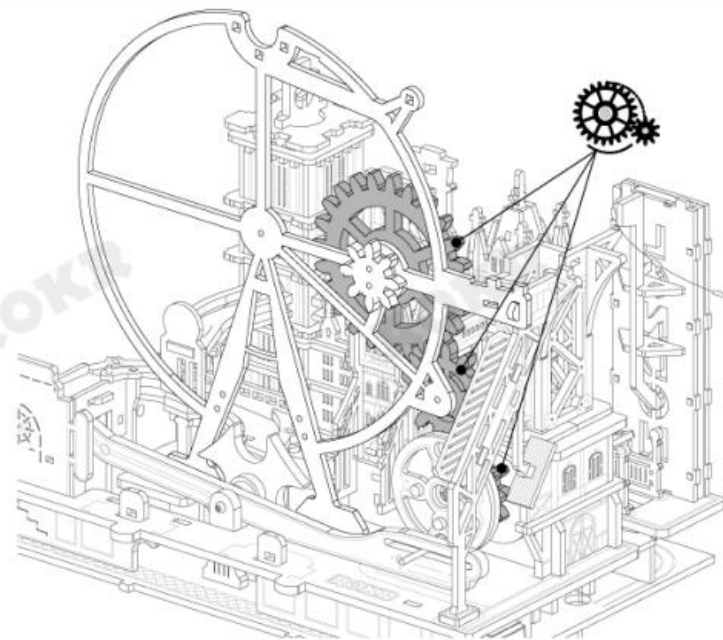
- C11
- C12 x2
- C13
- C14
- D21
- E2
- K3
- 2 P16
- P30



D11
D18
D19
D20
G12

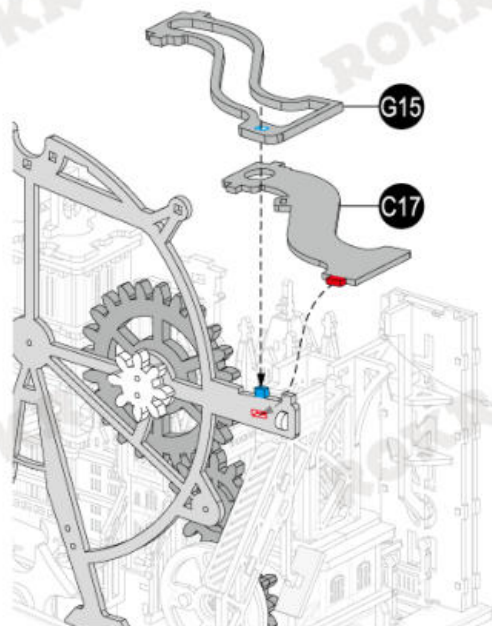


1

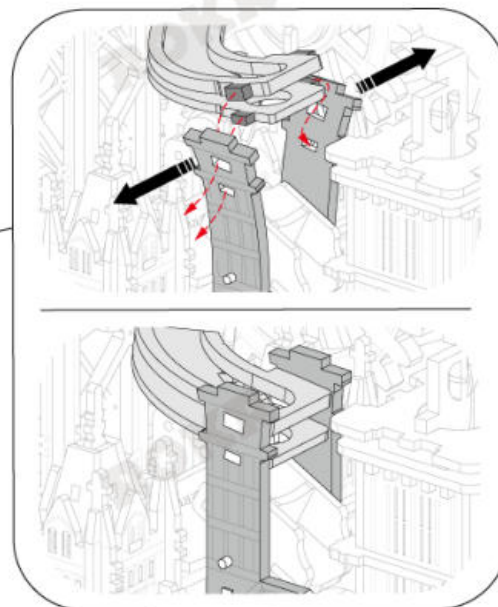
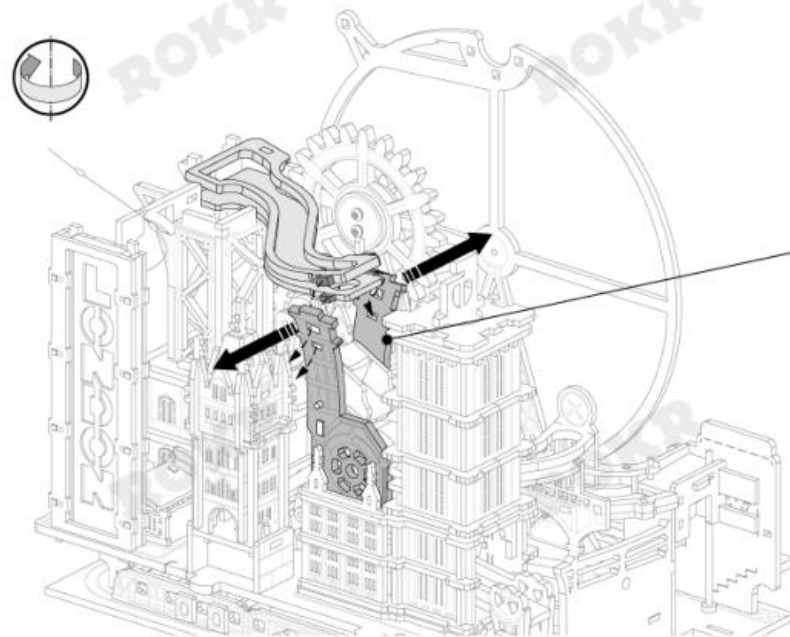


7

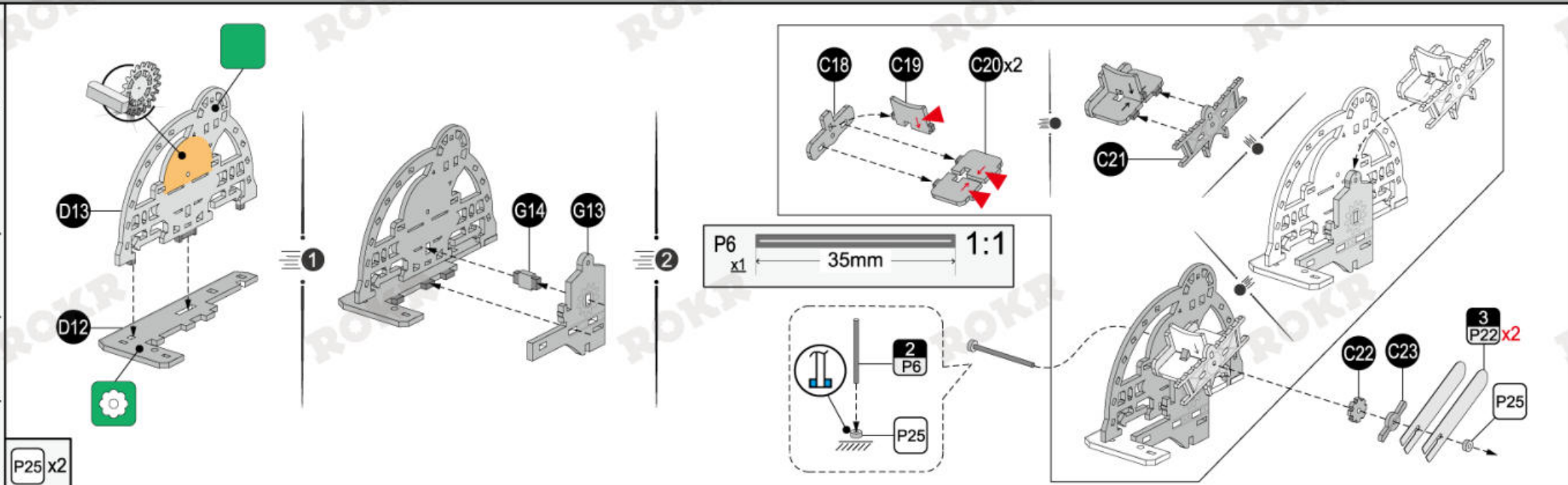
C17
G15



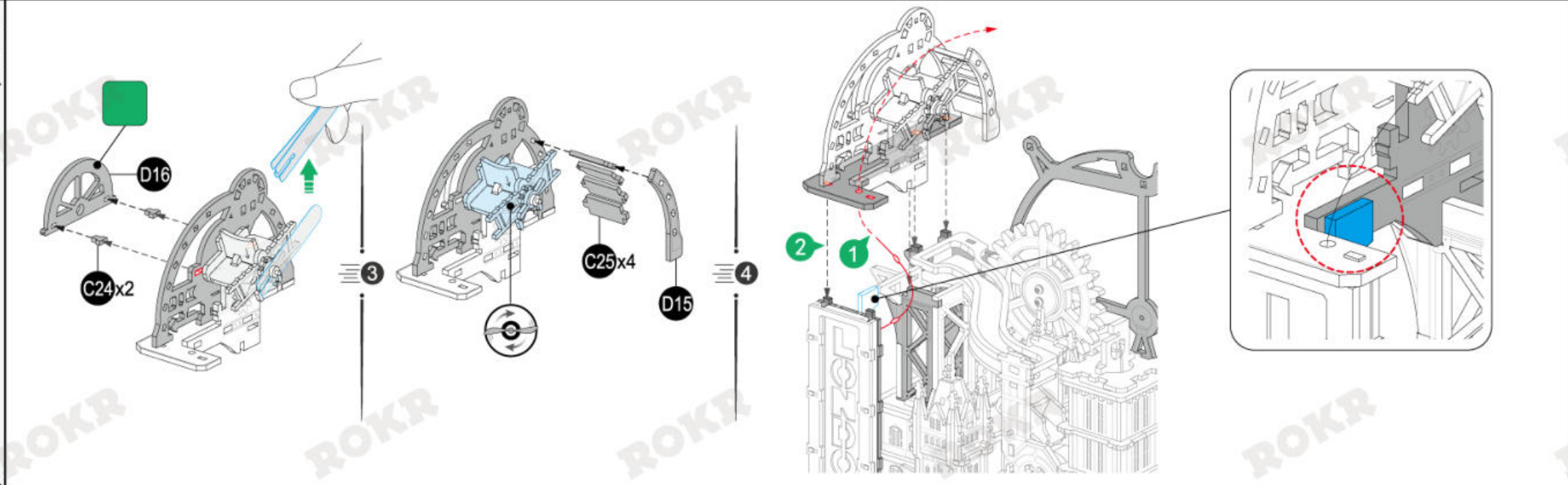
1



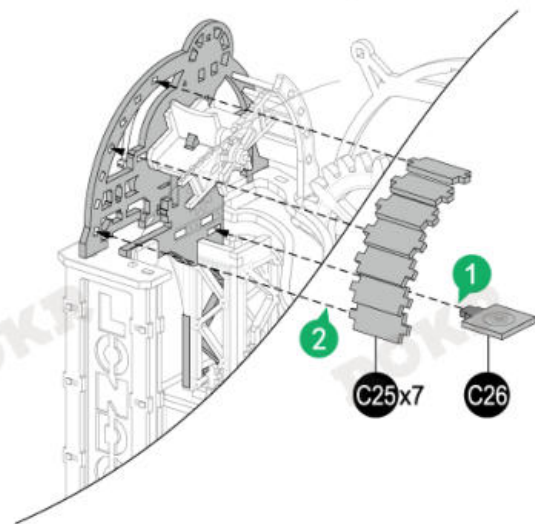
C18
 C19
 C20x2
 C21
 C22
 C23
 D12
 D13
 G13
 G14
 2
 P6
 3
 P22x2
 P25 x2



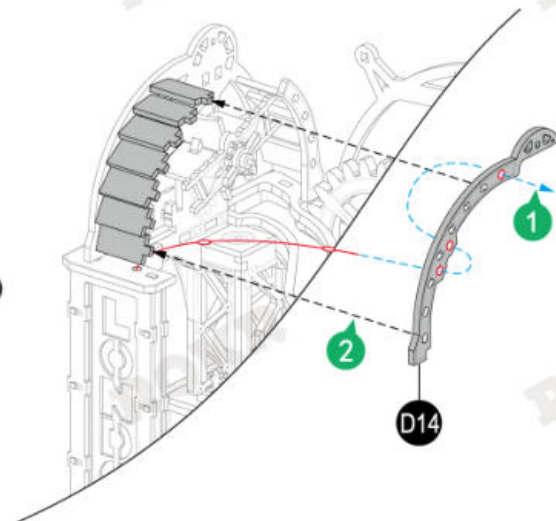
C24x2
 C25x4
 D15
 D16



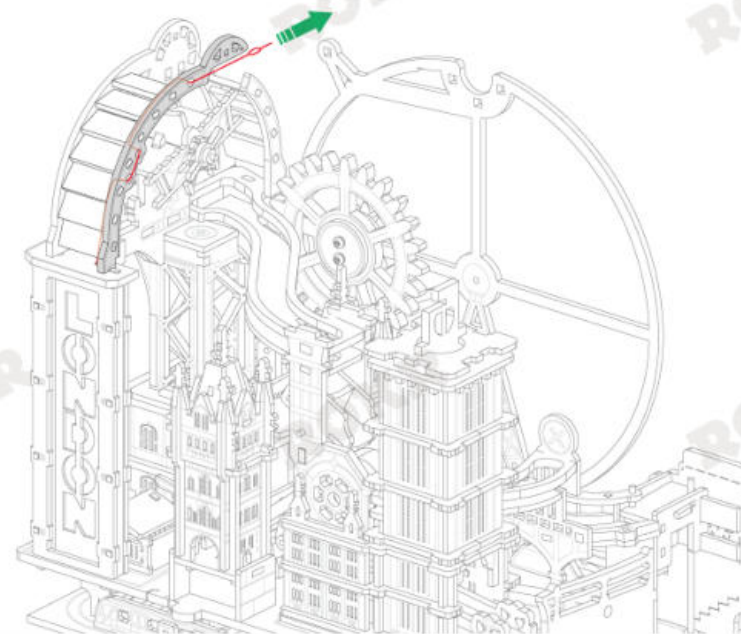
C25x7
C26
D14



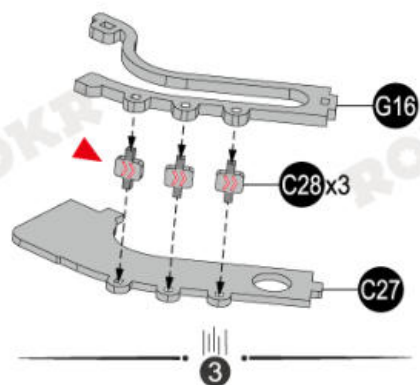
1



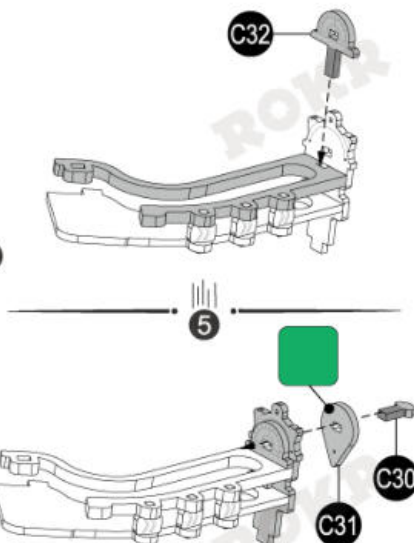
2



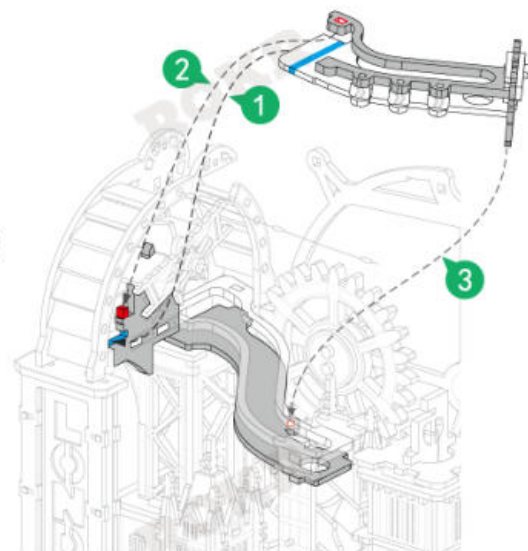
C27
C28 x3
C29
C30
C31
C32
G16



4



5



Tips

