



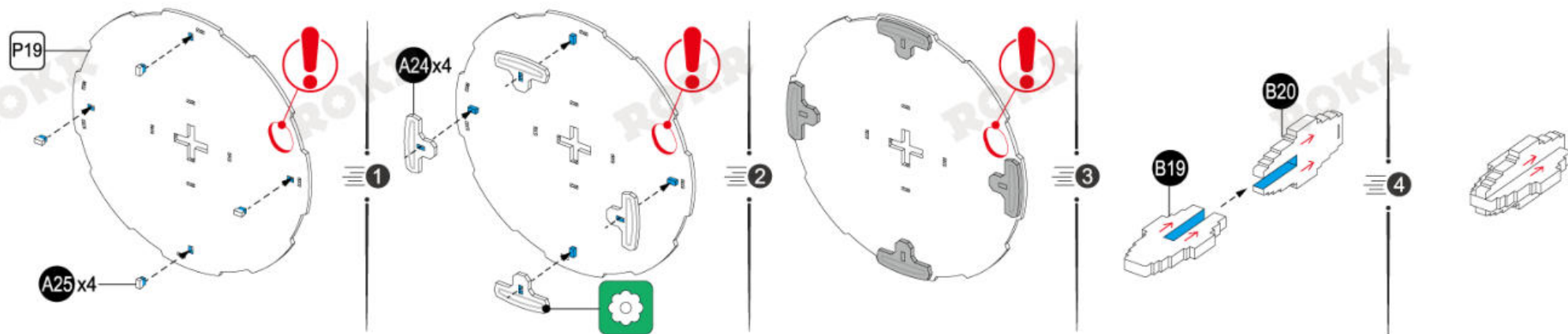
A24 x4

A25 x4

B19

B20

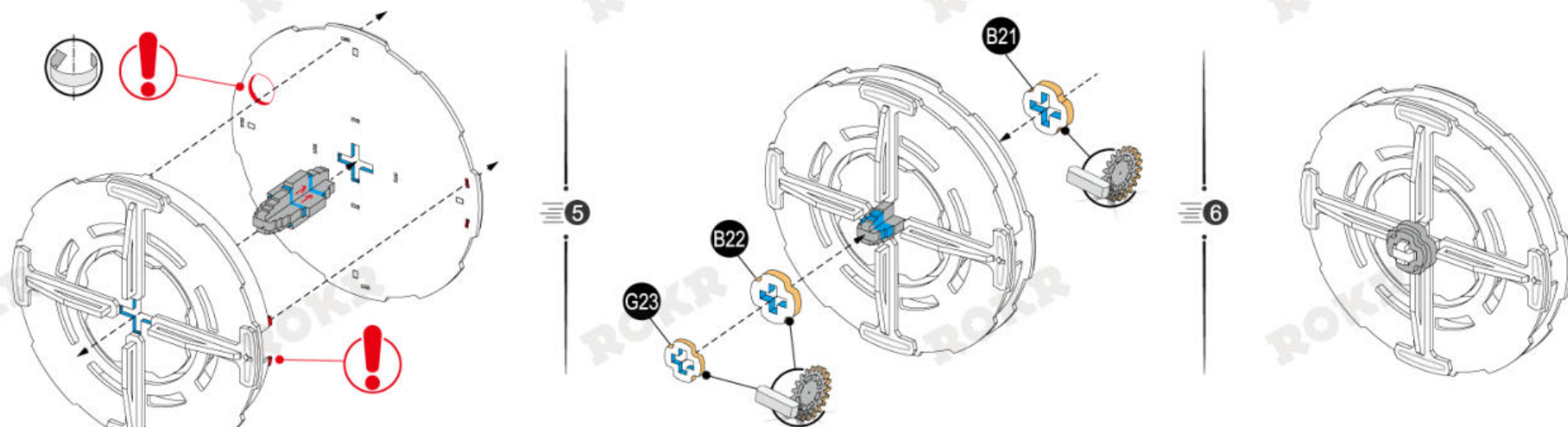
P19



B21

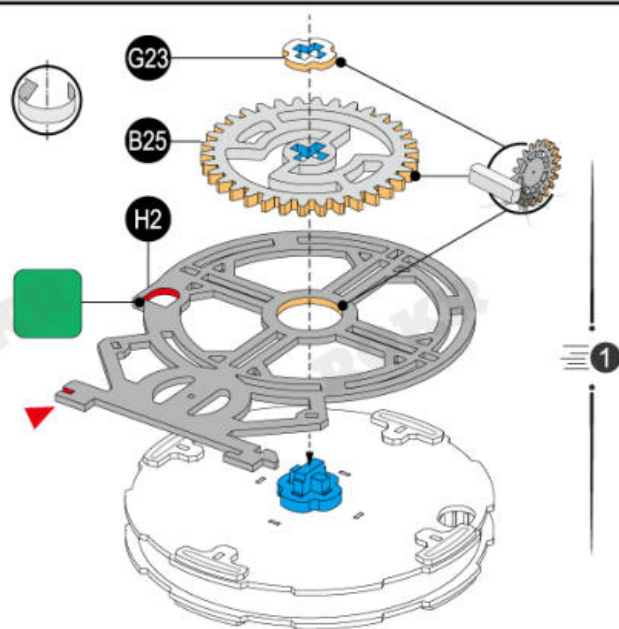
B22

G23

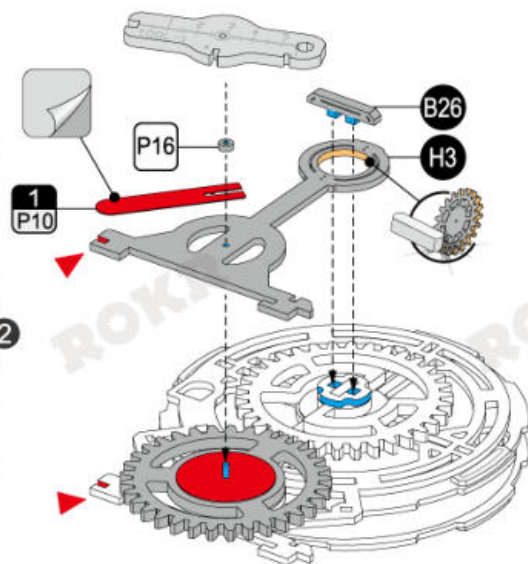
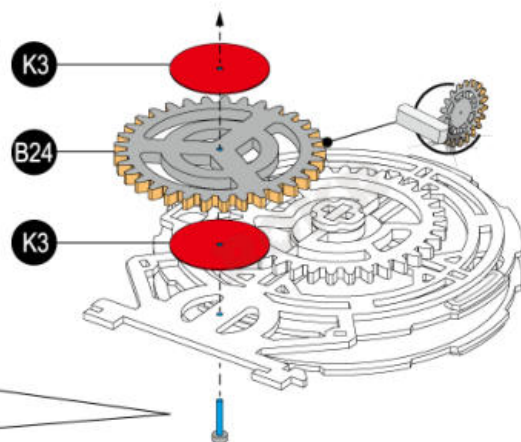
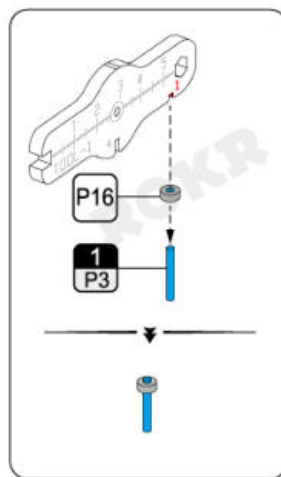




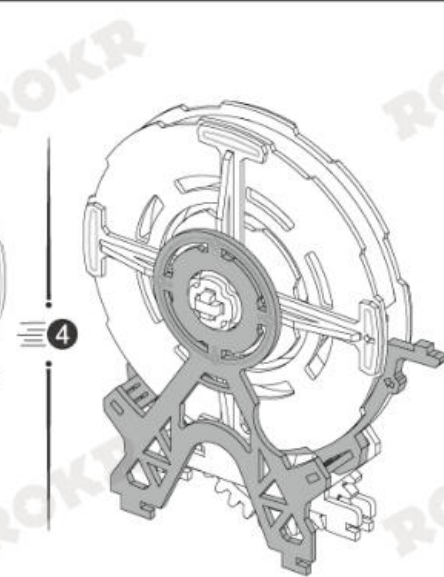
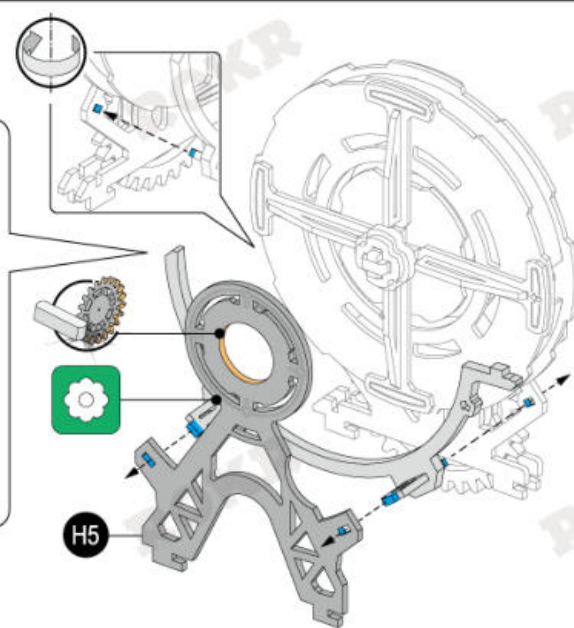
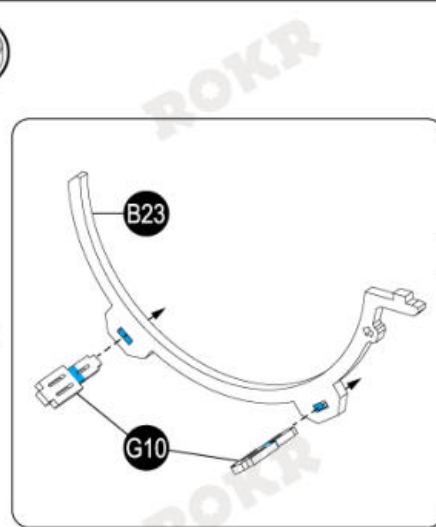
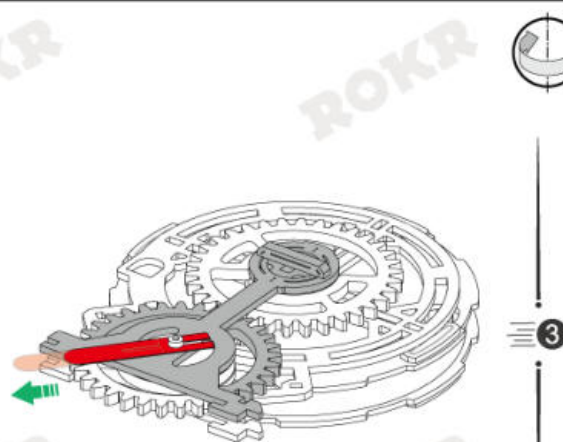
B24  
 B25  
 B26  
 G23  
 H2  
 H3  
 K3 x2  
 1 P3  
 1 P10  
 P16 x2



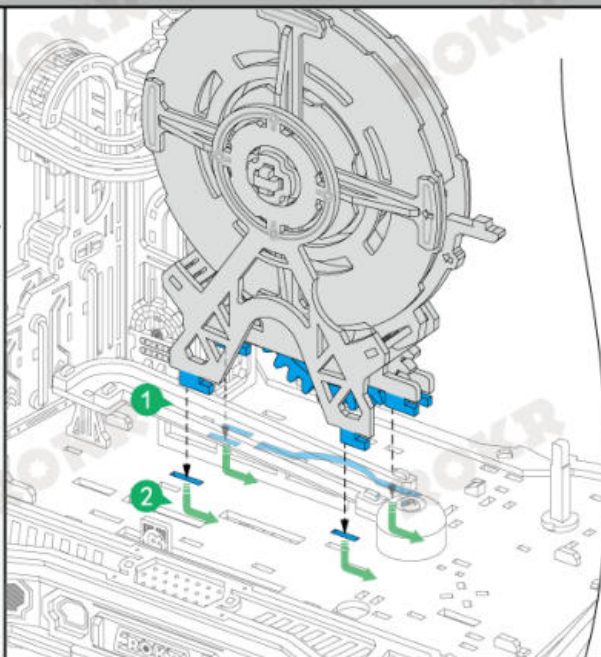
P3  
 15mm  
 1:1



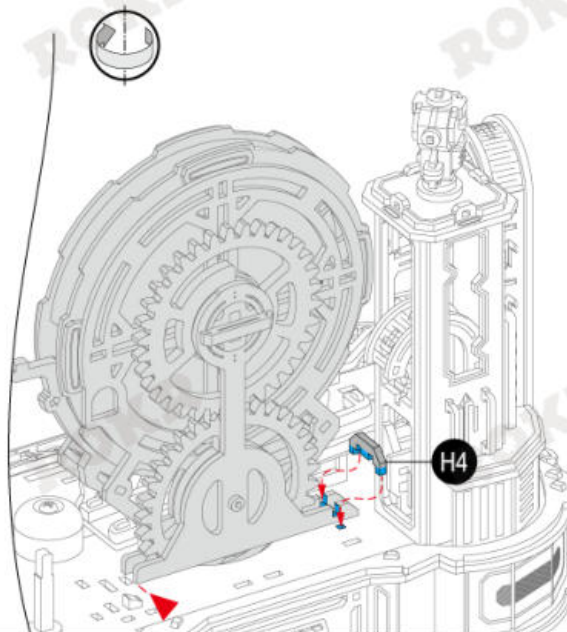
B23  
 G10 x2  
 H5



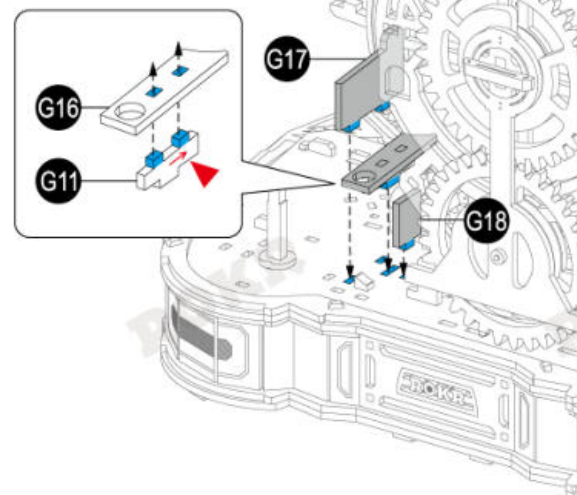
G11  
G16  
G17  
G18  
H4



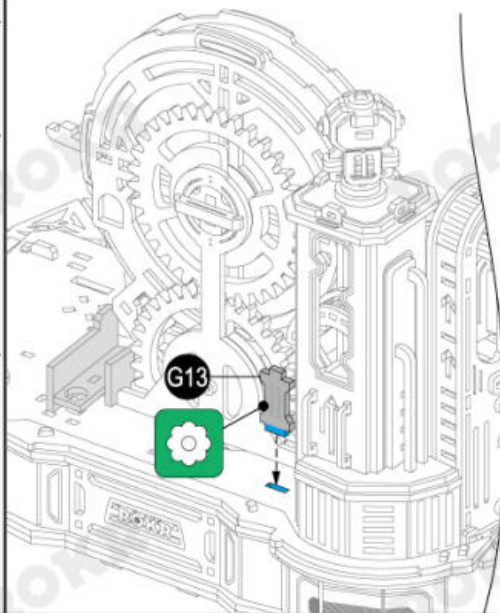
1



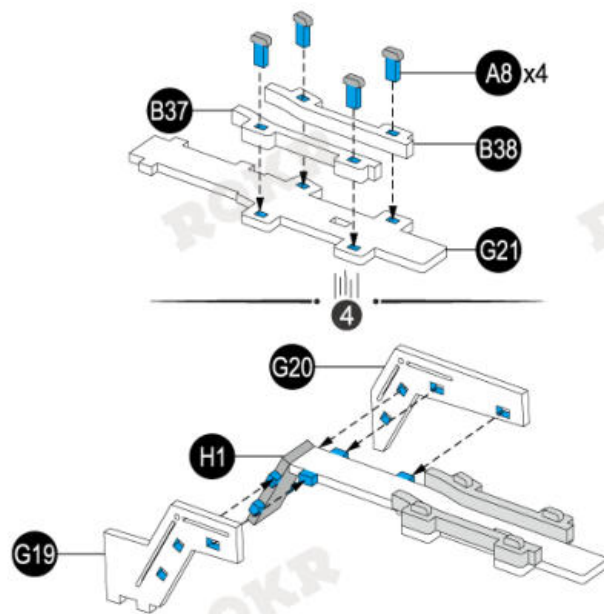
2



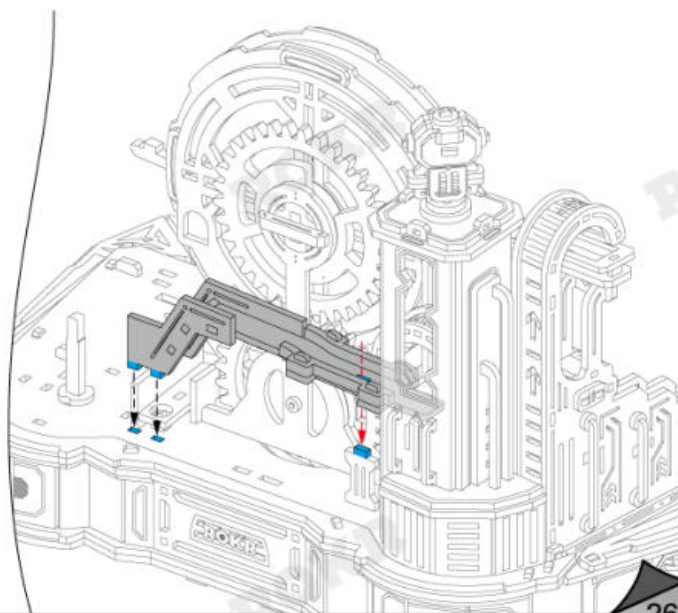
A8 x4  
B37  
B38  
G13  
G19  
G20  
G21  
H1



3

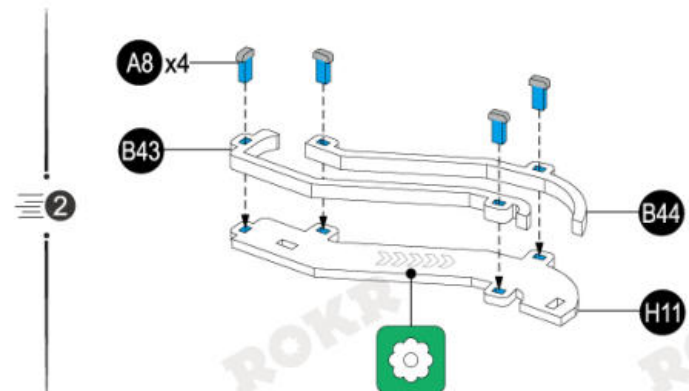
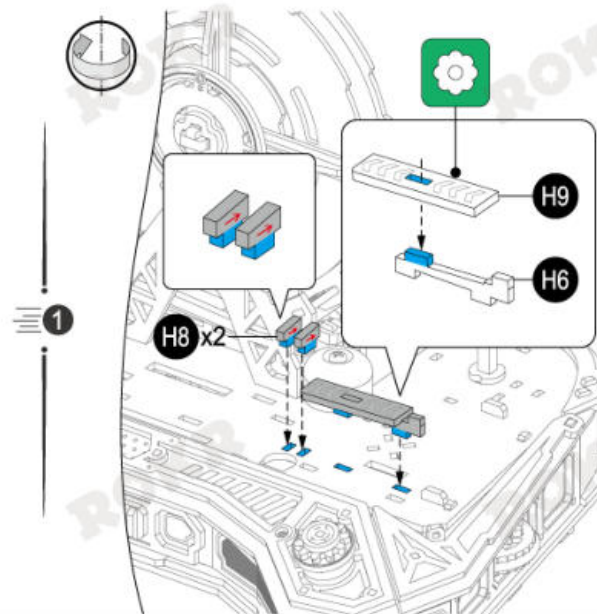
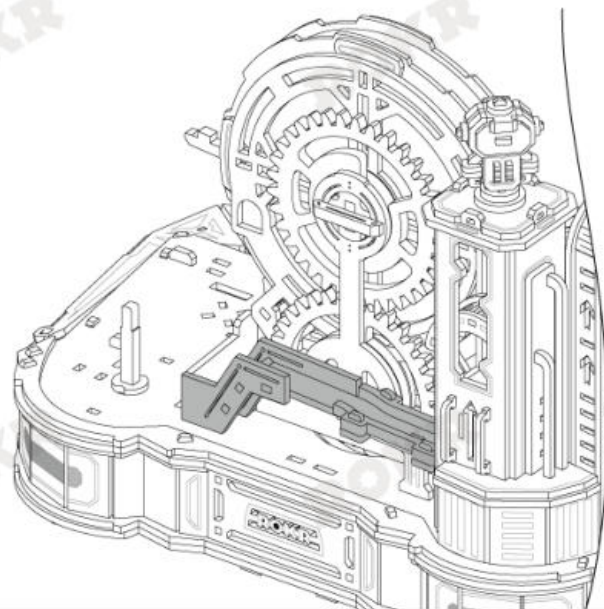


5

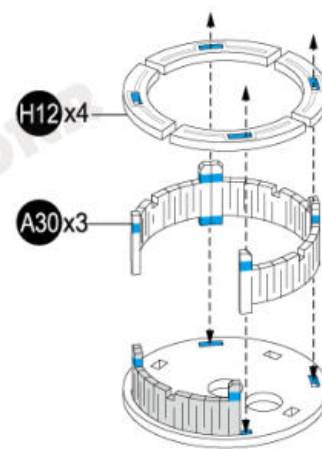
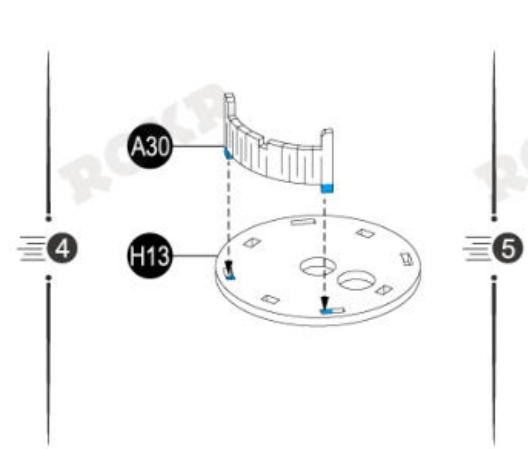
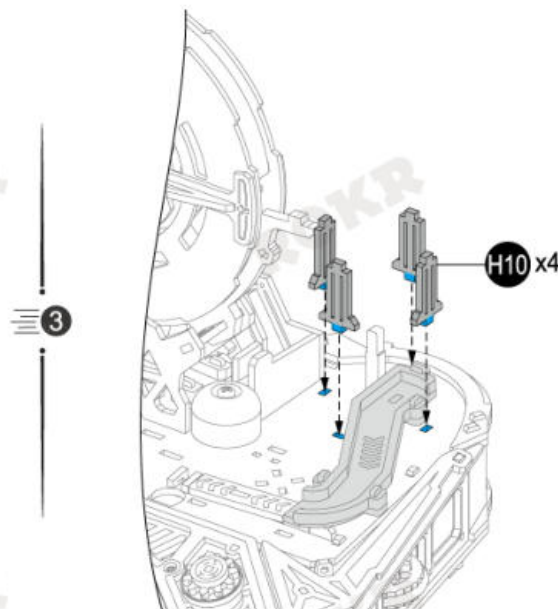
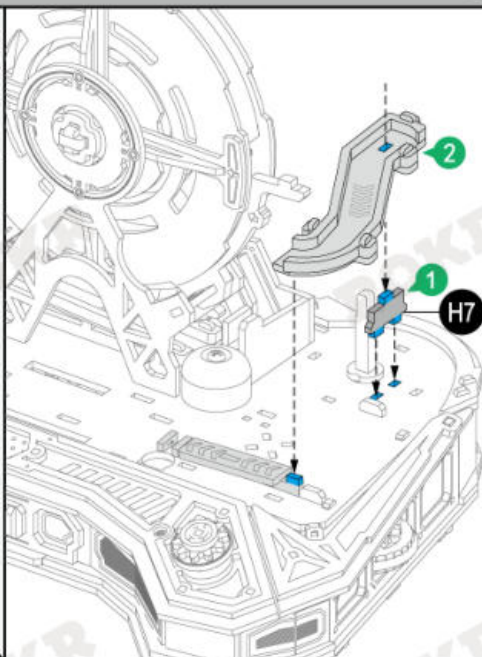


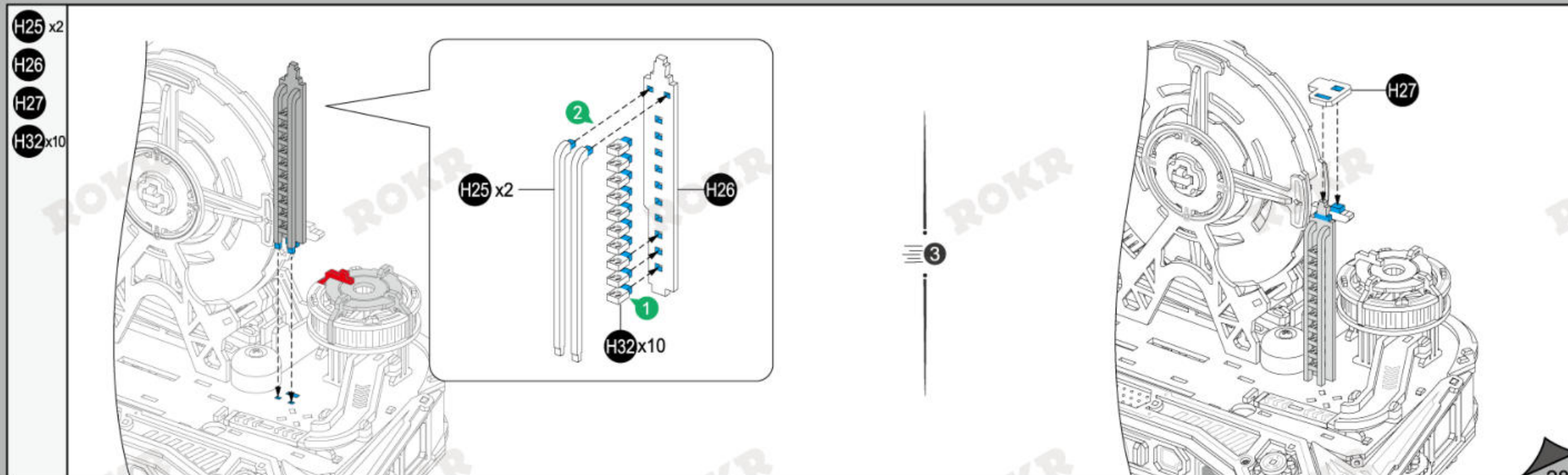
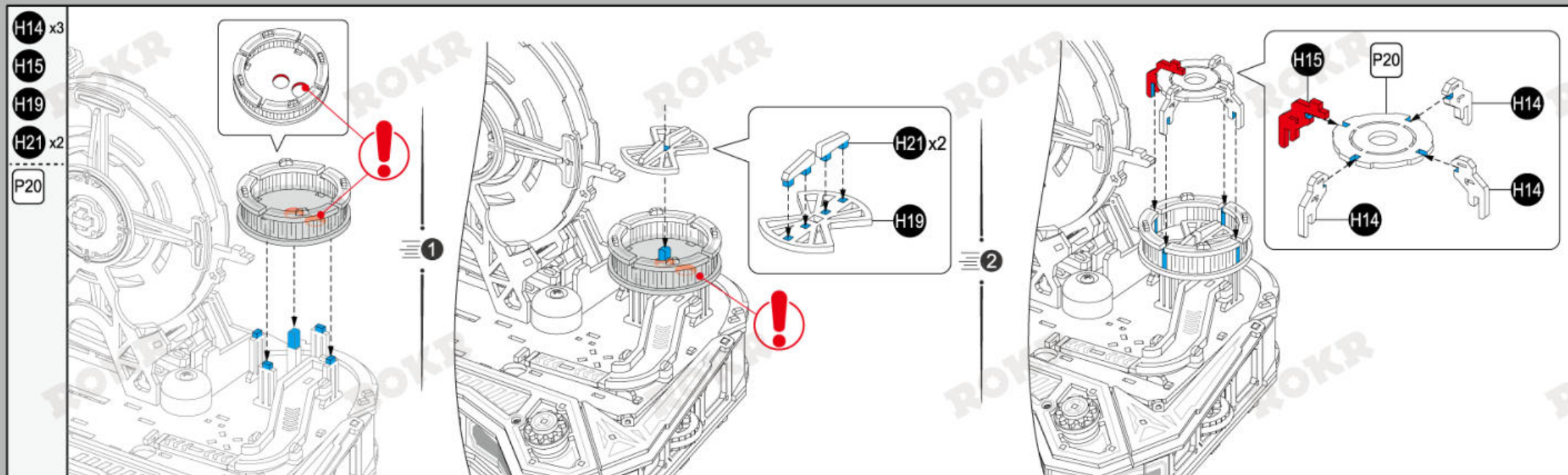


A8 x4  
B43  
B44  
H6  
H8 x2  
H9  
H11



A30 x4  
H7  
H10 x4  
H12 x4  
H13







A8 x5

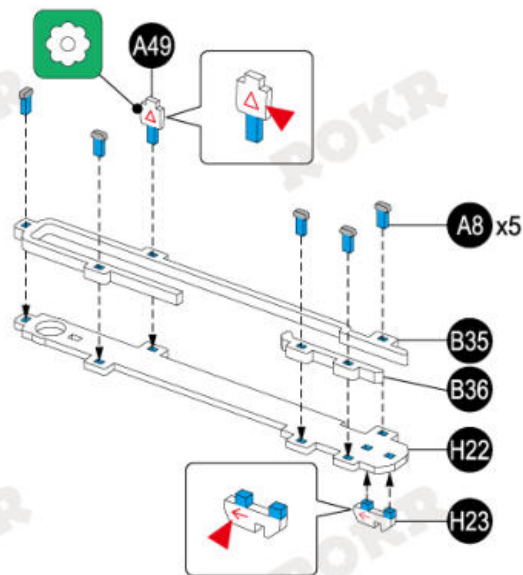
A49

B35

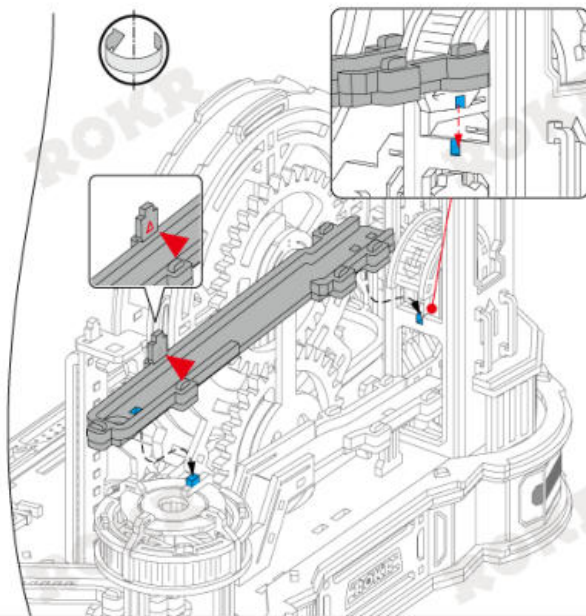
B36

H22

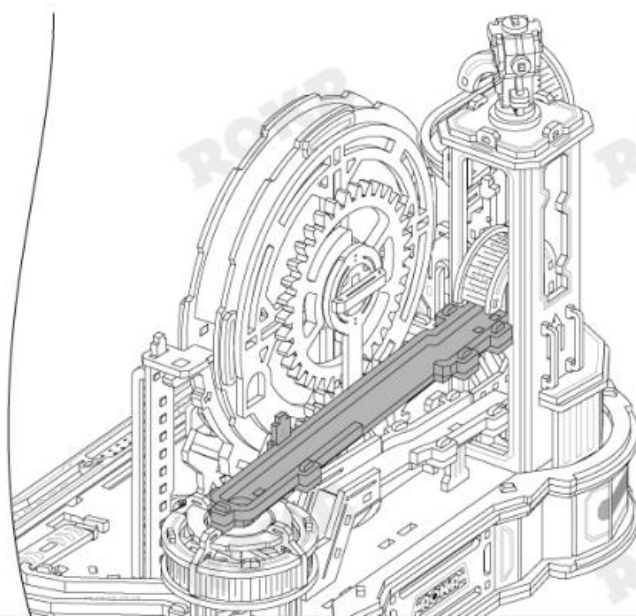
H23



1



2



9

A46 x4

A55

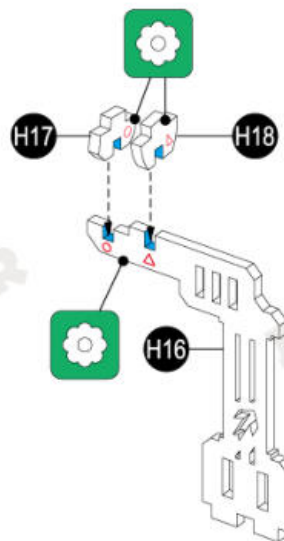
A56

H16

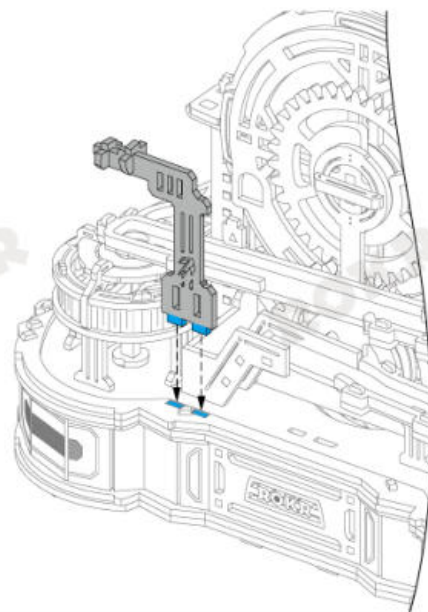
H17

H18

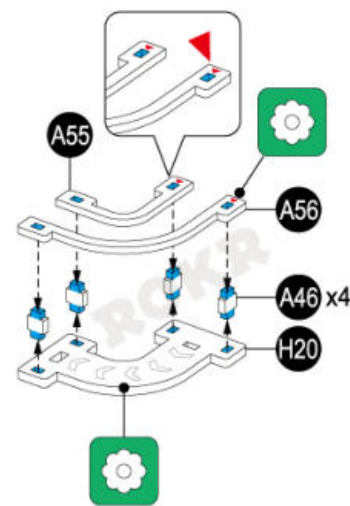
H20



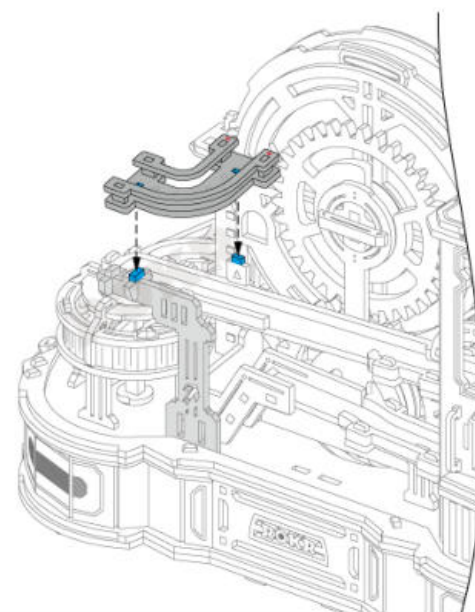
3



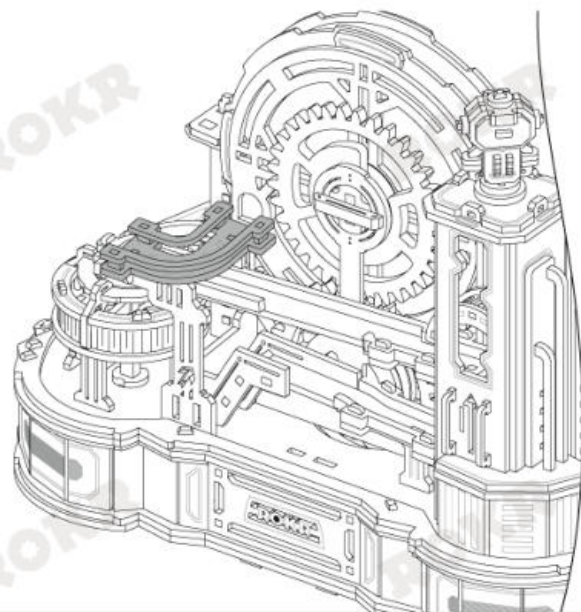
4



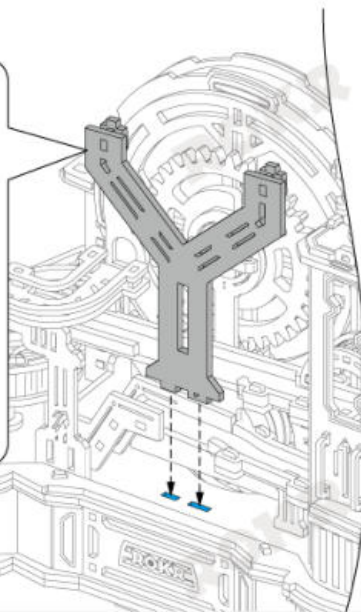
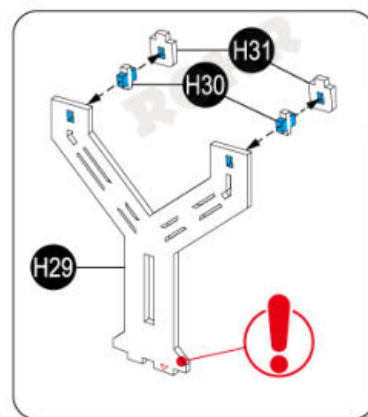
5



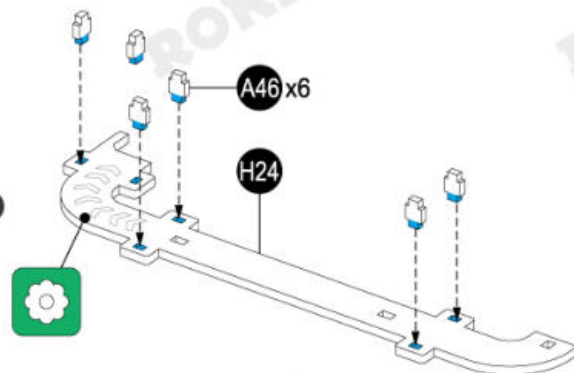
A46 x6  
H24  
H29  
H30 x2  
H31 x2



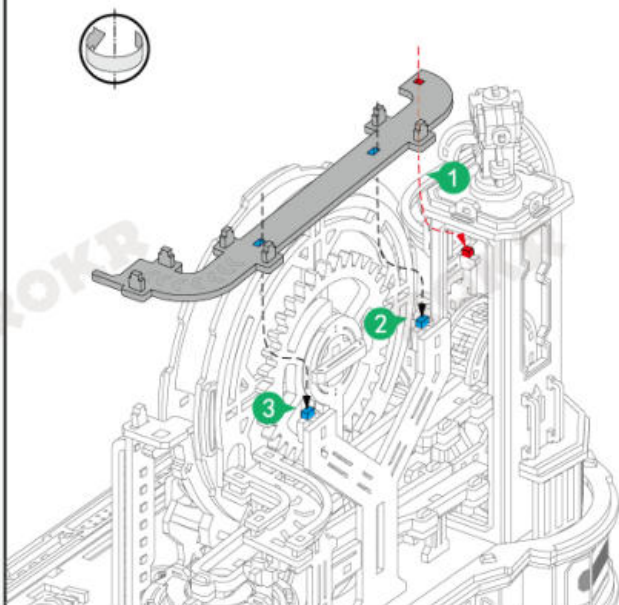
1



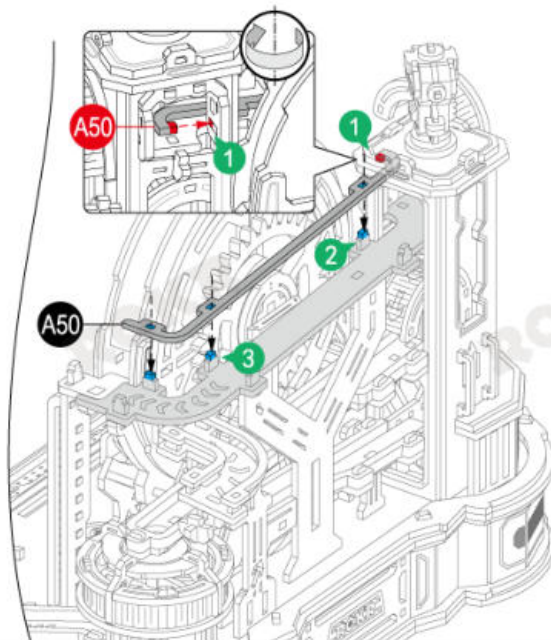
2



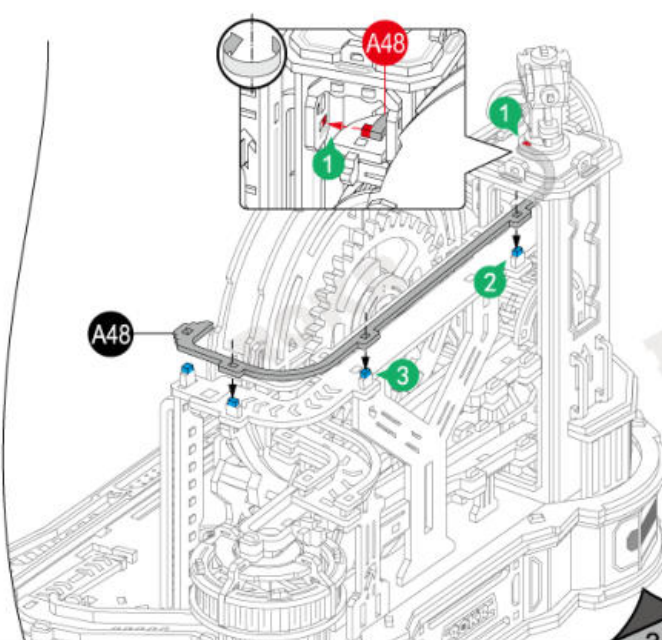
A48  
A50



3

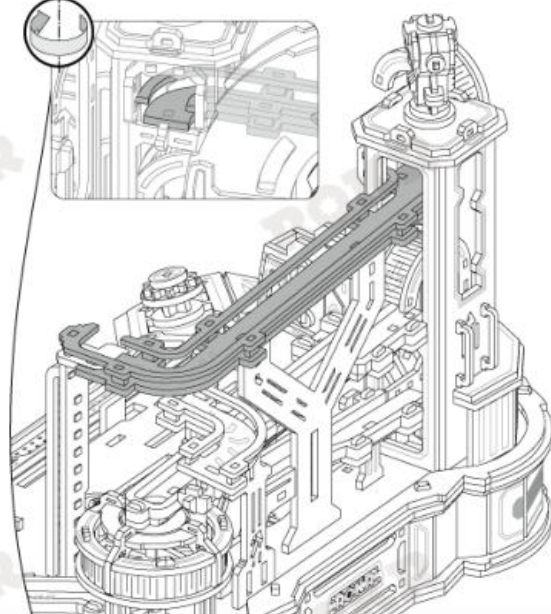
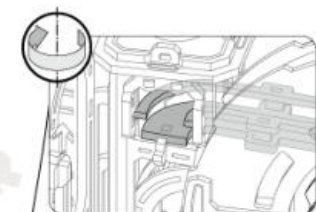


4

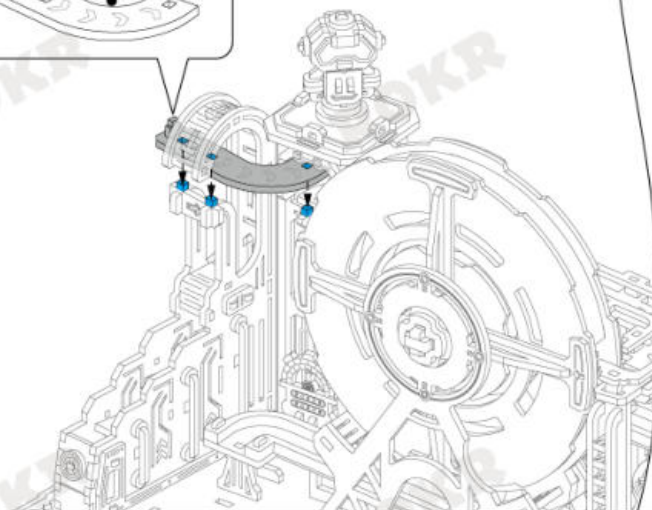
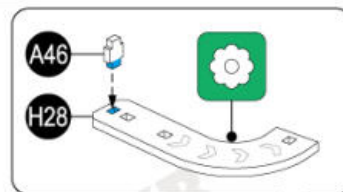




A46  
A47  
H28

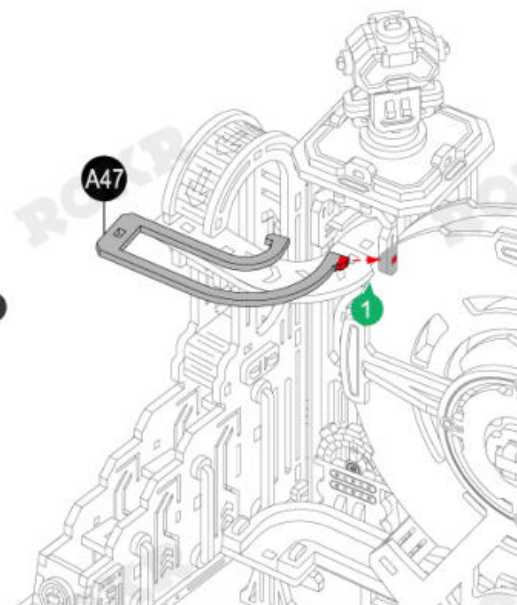


1

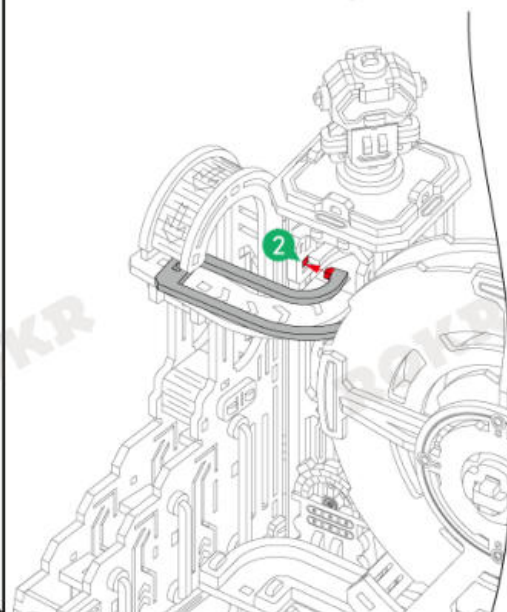


2

A47

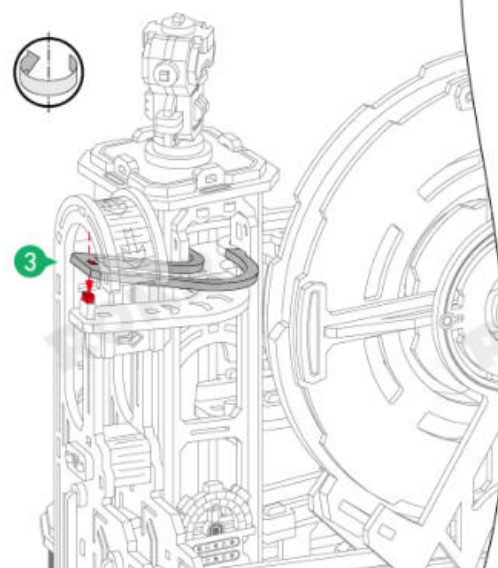


1



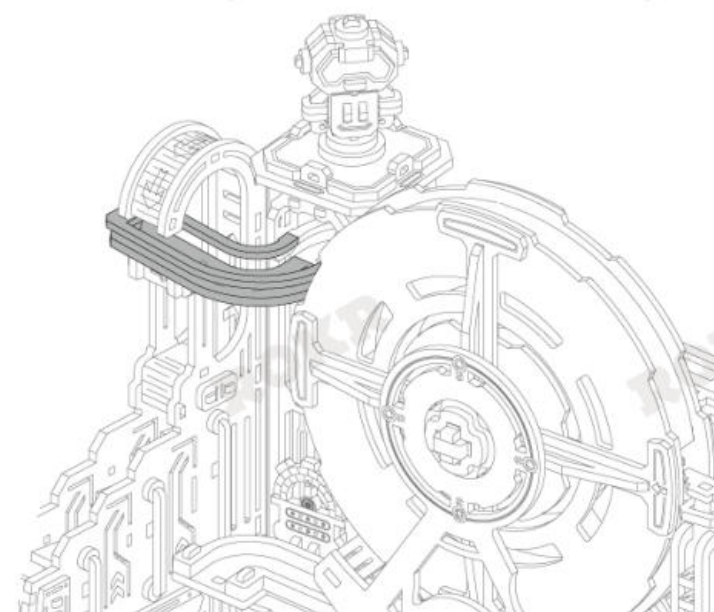
2

3



3

4

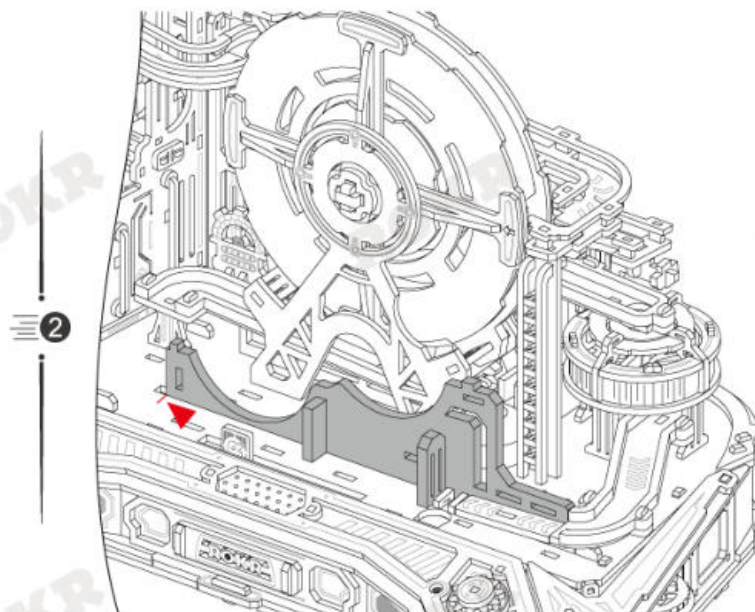
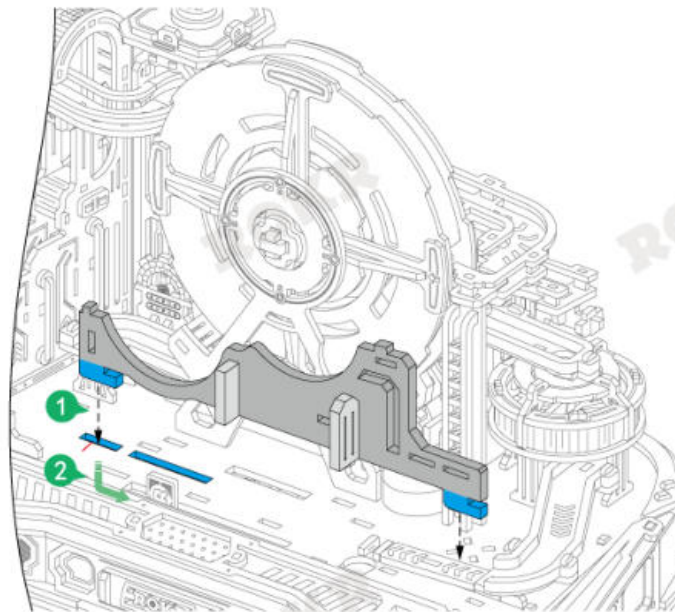
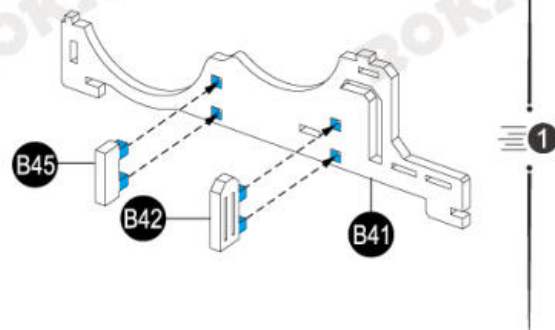


10

B41

B42

B45



11

B31 x2

J1

J2

J3

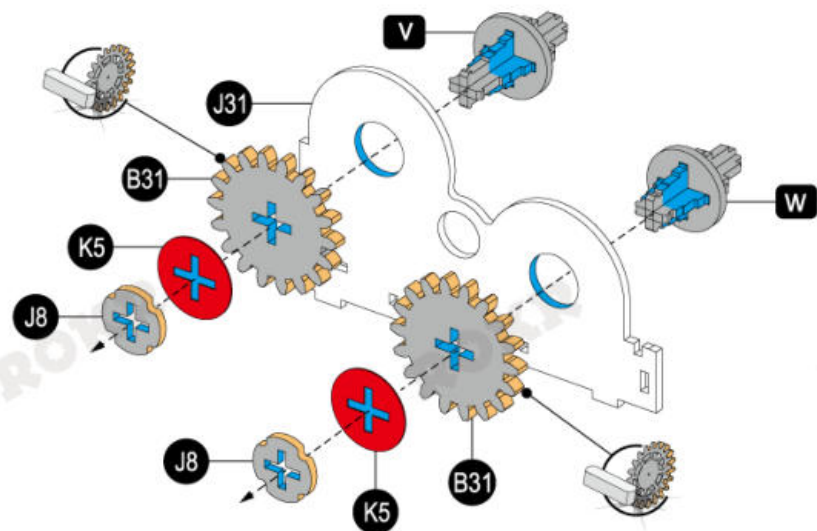
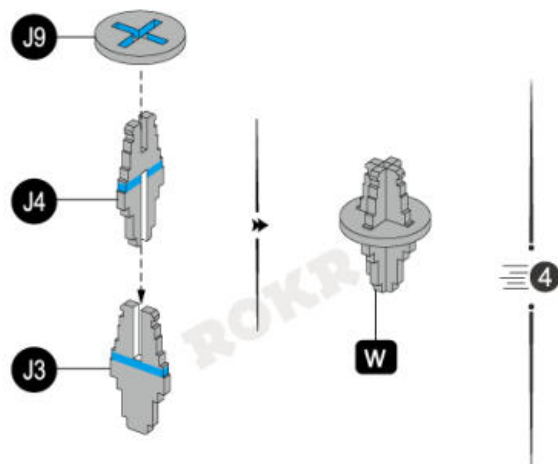
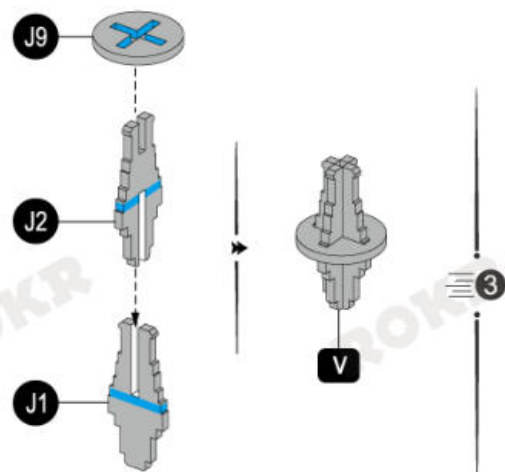
J4

J8 x2

J9 x2

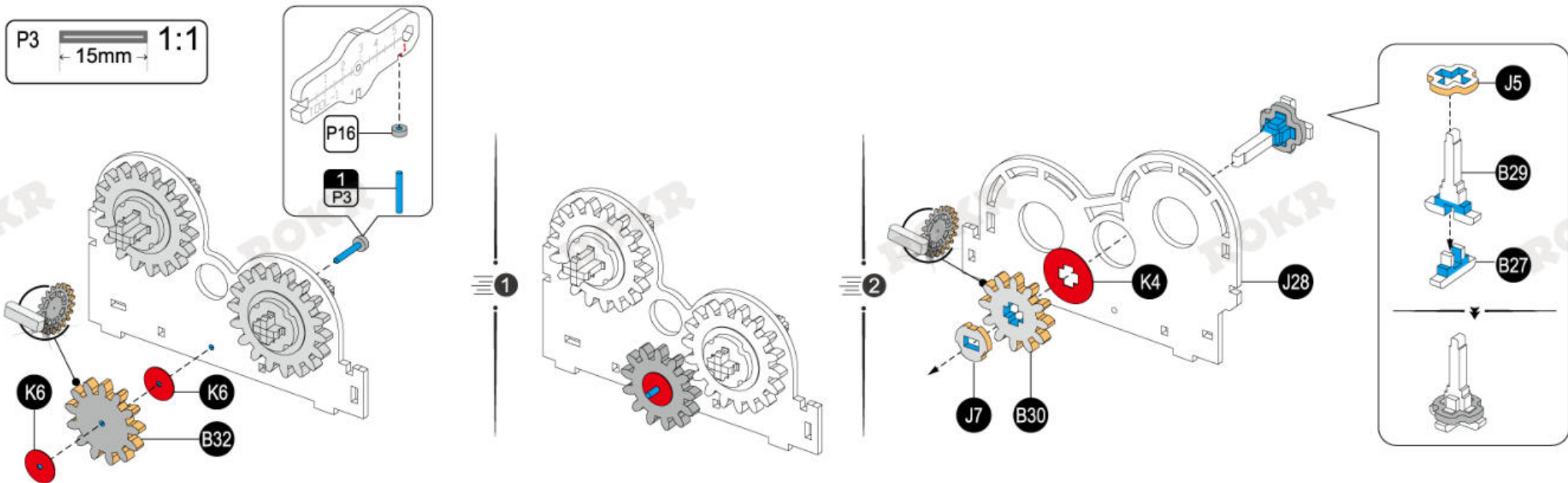
J31

K5 x2

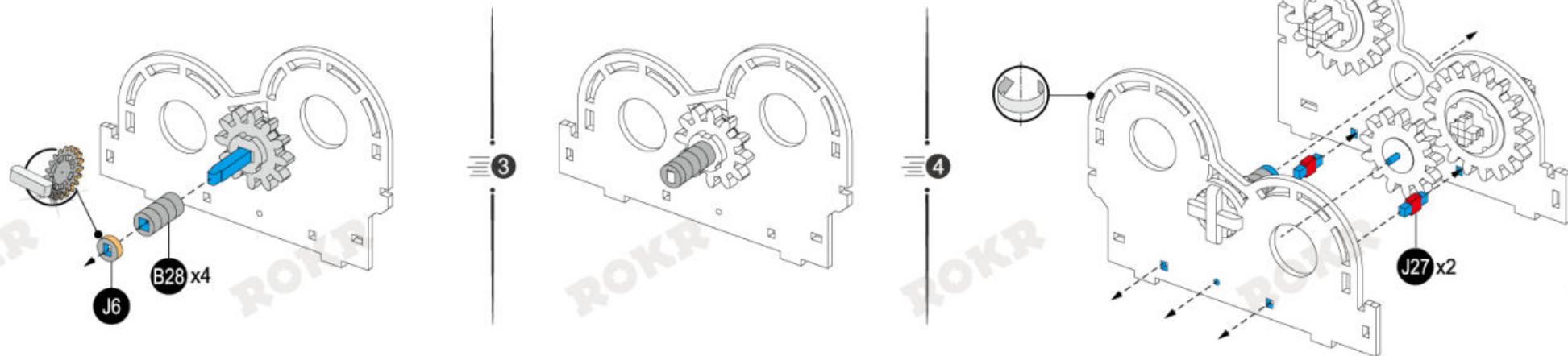




B27  
 B29  
 B30  
 B32  
 J5  
 J7  
 J28  
 K4  
 K6 x2  
 1  
 P3  
 P16



B28 x4  
 J6  
 J27 x2



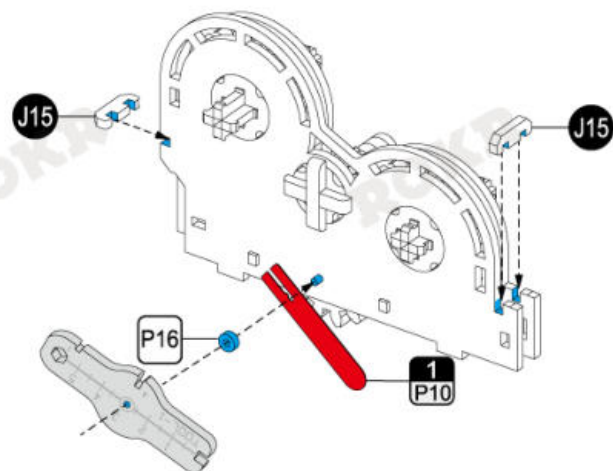
J10 x2

J15 x2

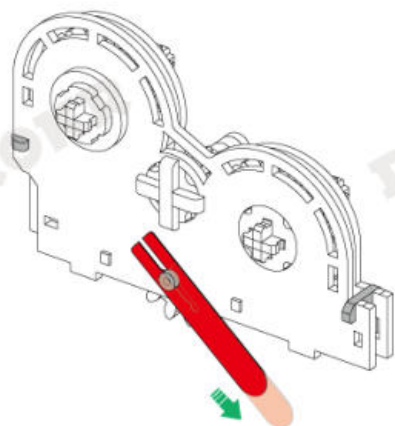
J24 x4

1  
P10

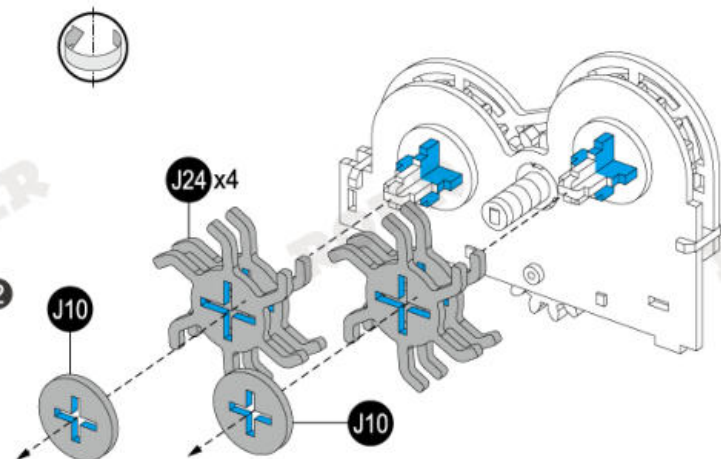
P16



1



2



A26 x2

A27

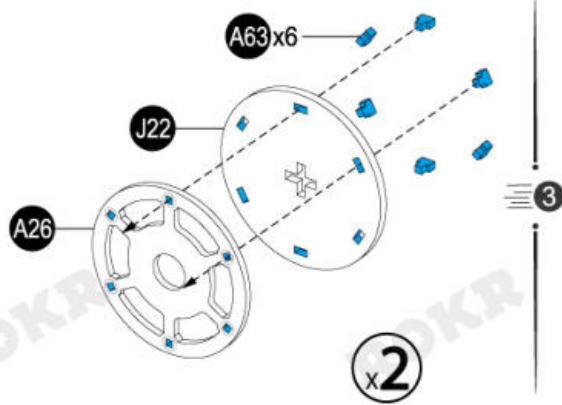
A28

A63 x12

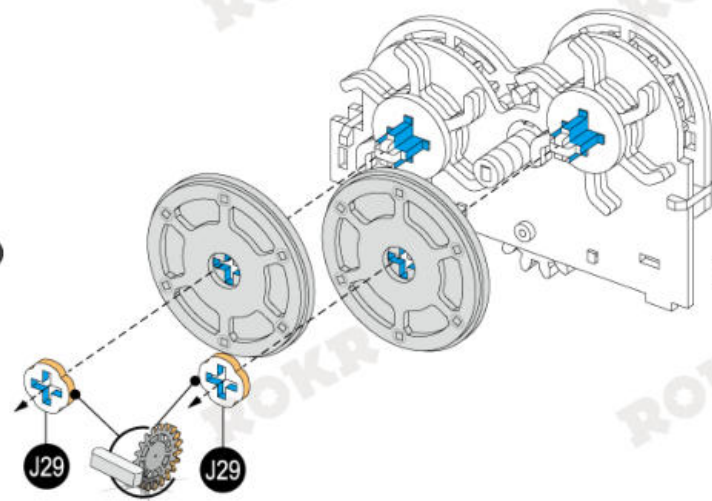
J22 x2

J29 x2

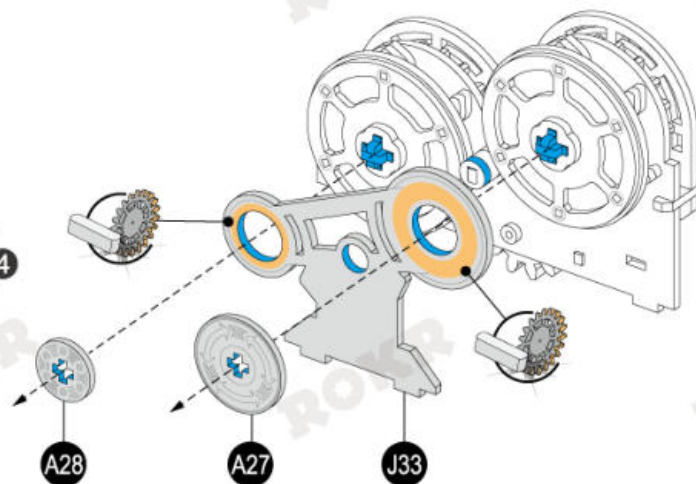
J33



3

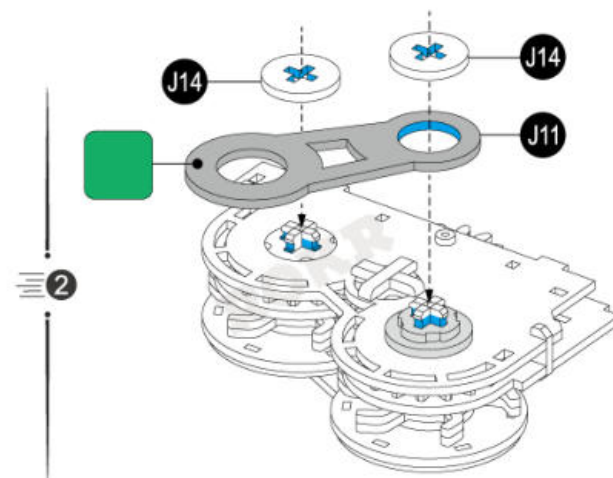
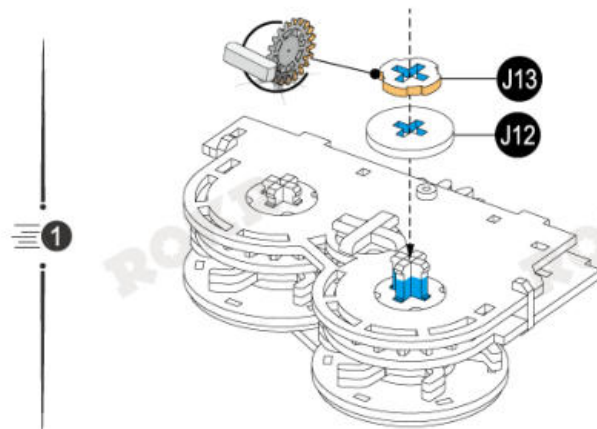
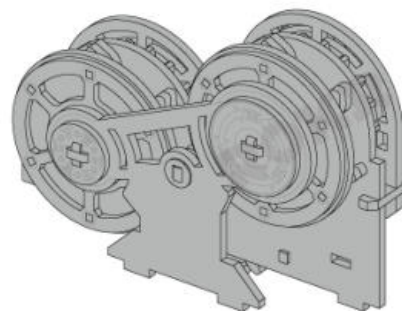


4

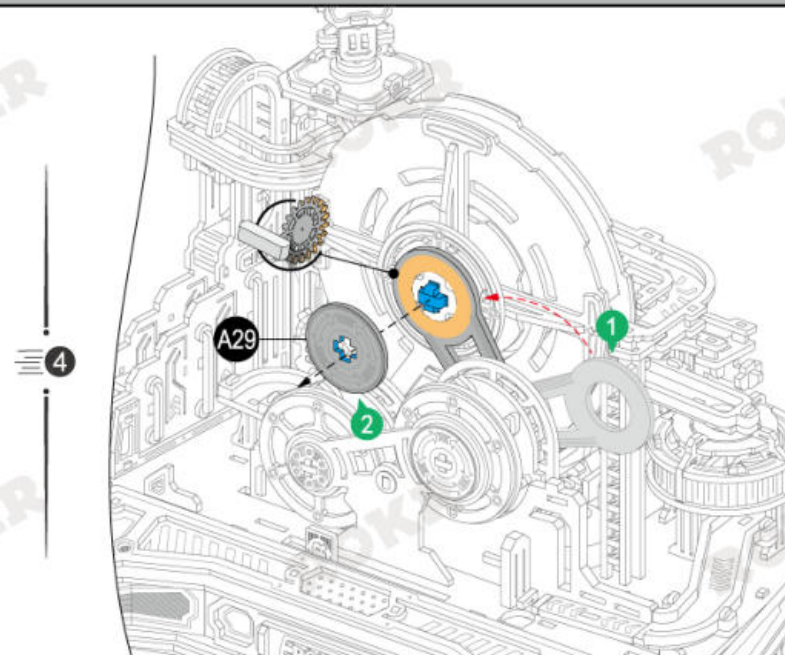
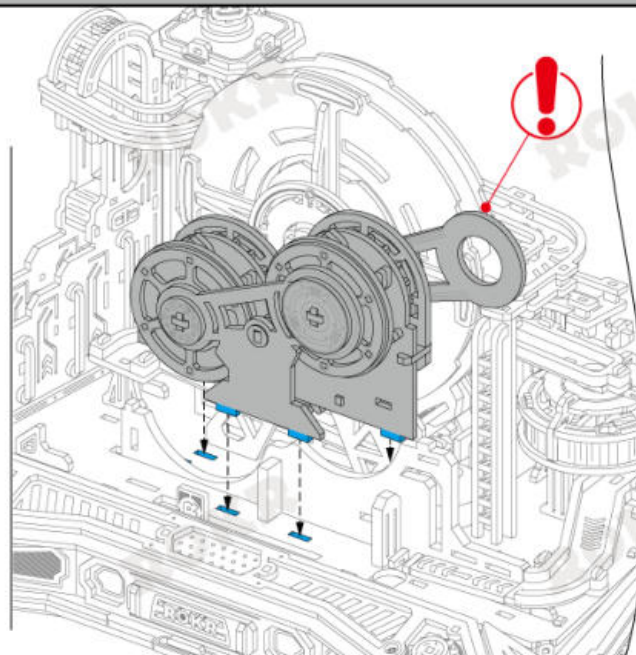
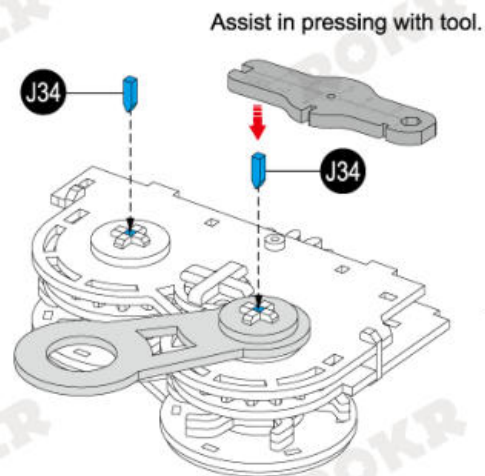




J11  
J12  
J13  
J14 x2



A29  
J34 x2



12

A57 x2

A59

J16 x2

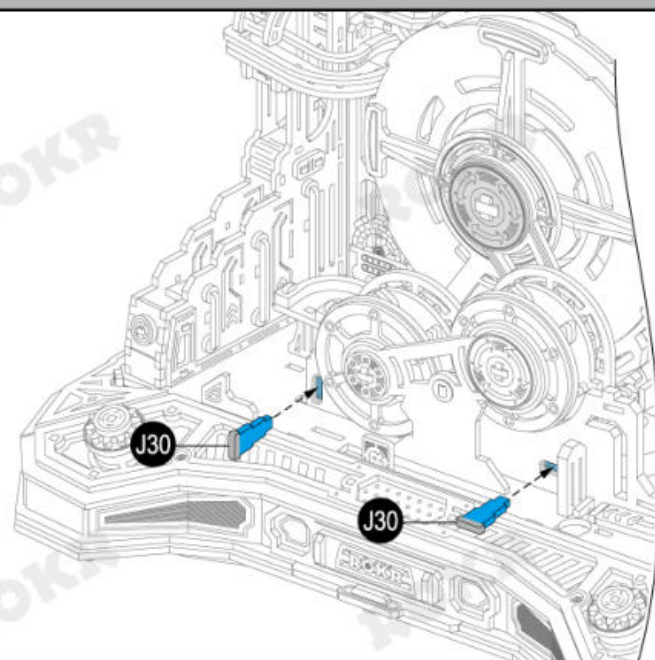
J17

J19

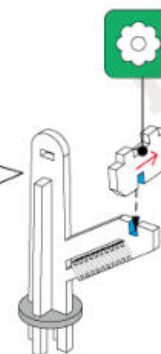
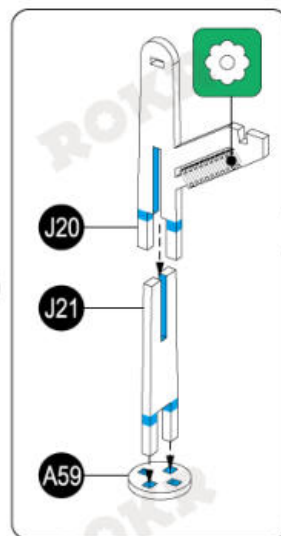
J20

J21

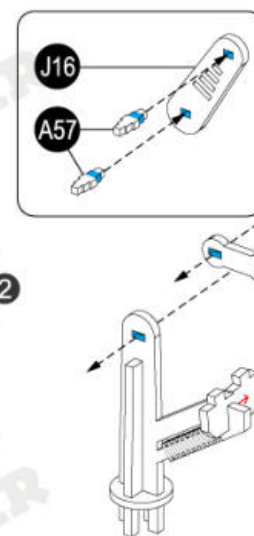
J30 x2



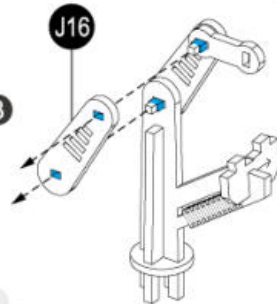
1



2



3



A58 x2

A60 x2

A61 x2

A62 x2

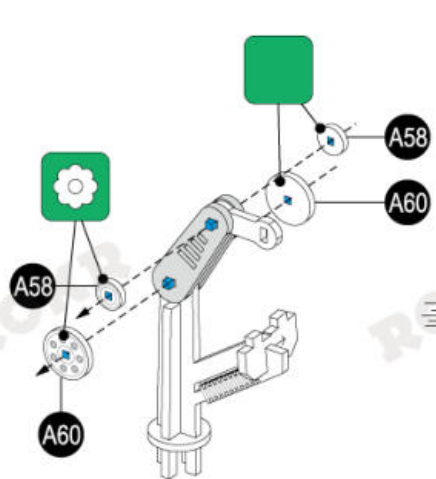
J23

J25

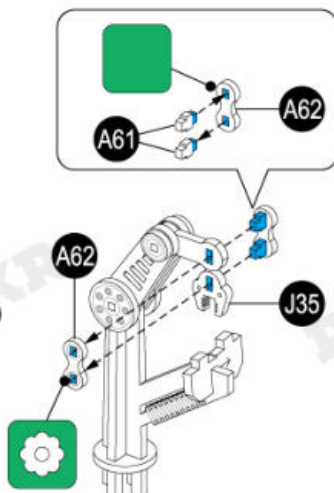
J26

J35

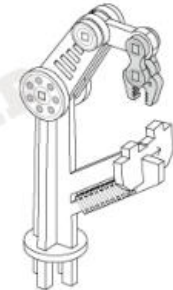
J36



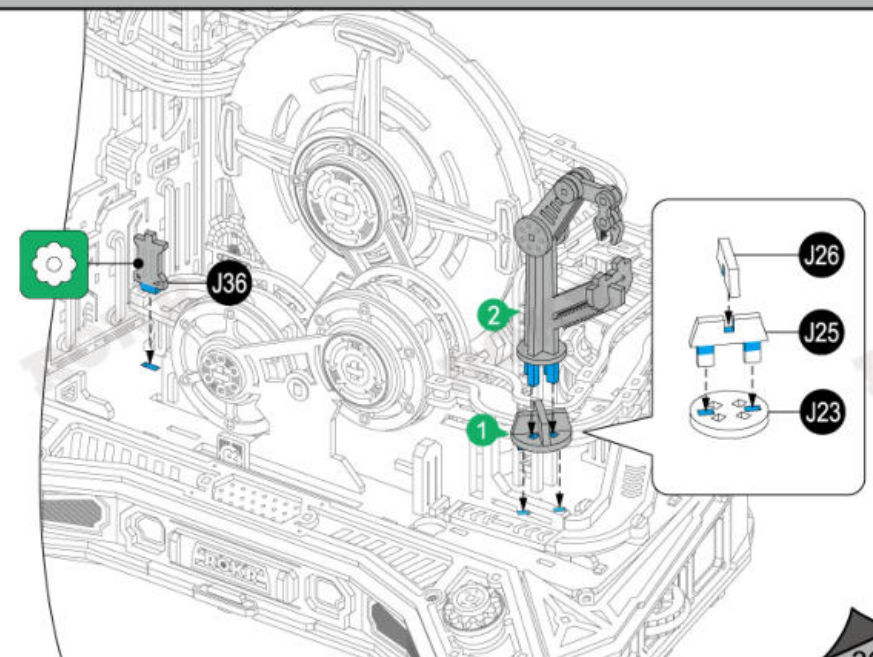
4



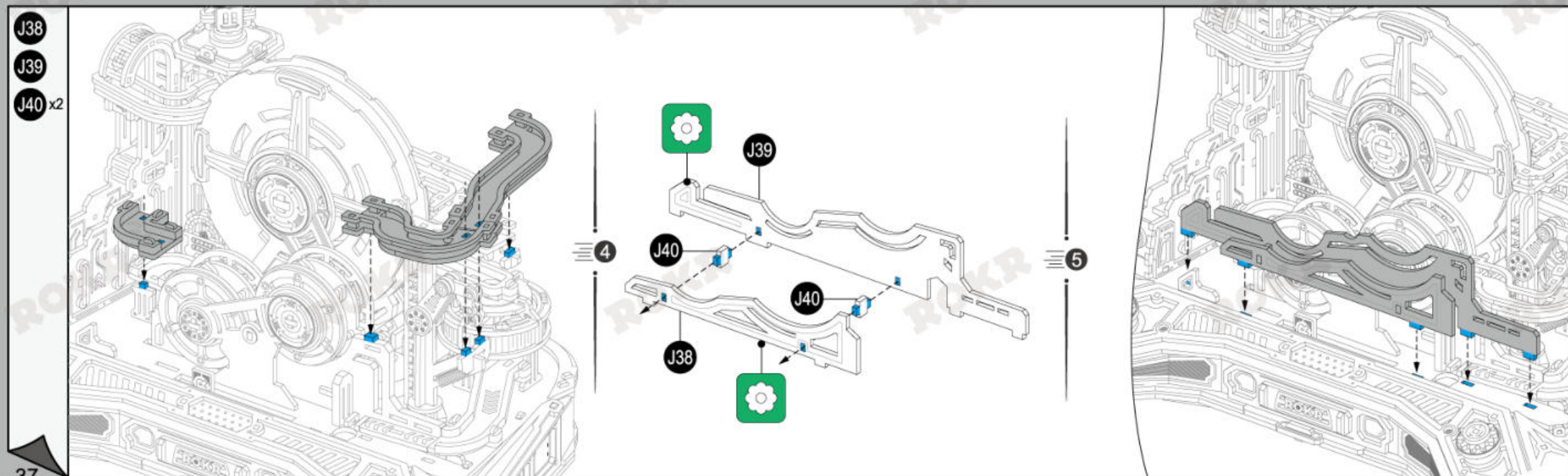
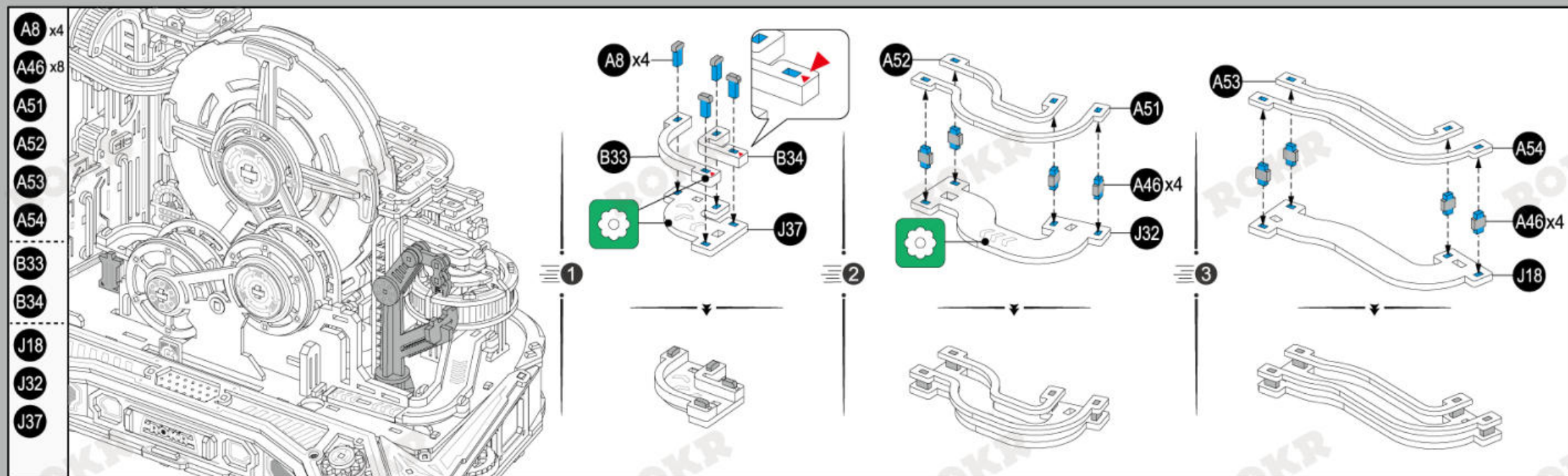
5



6

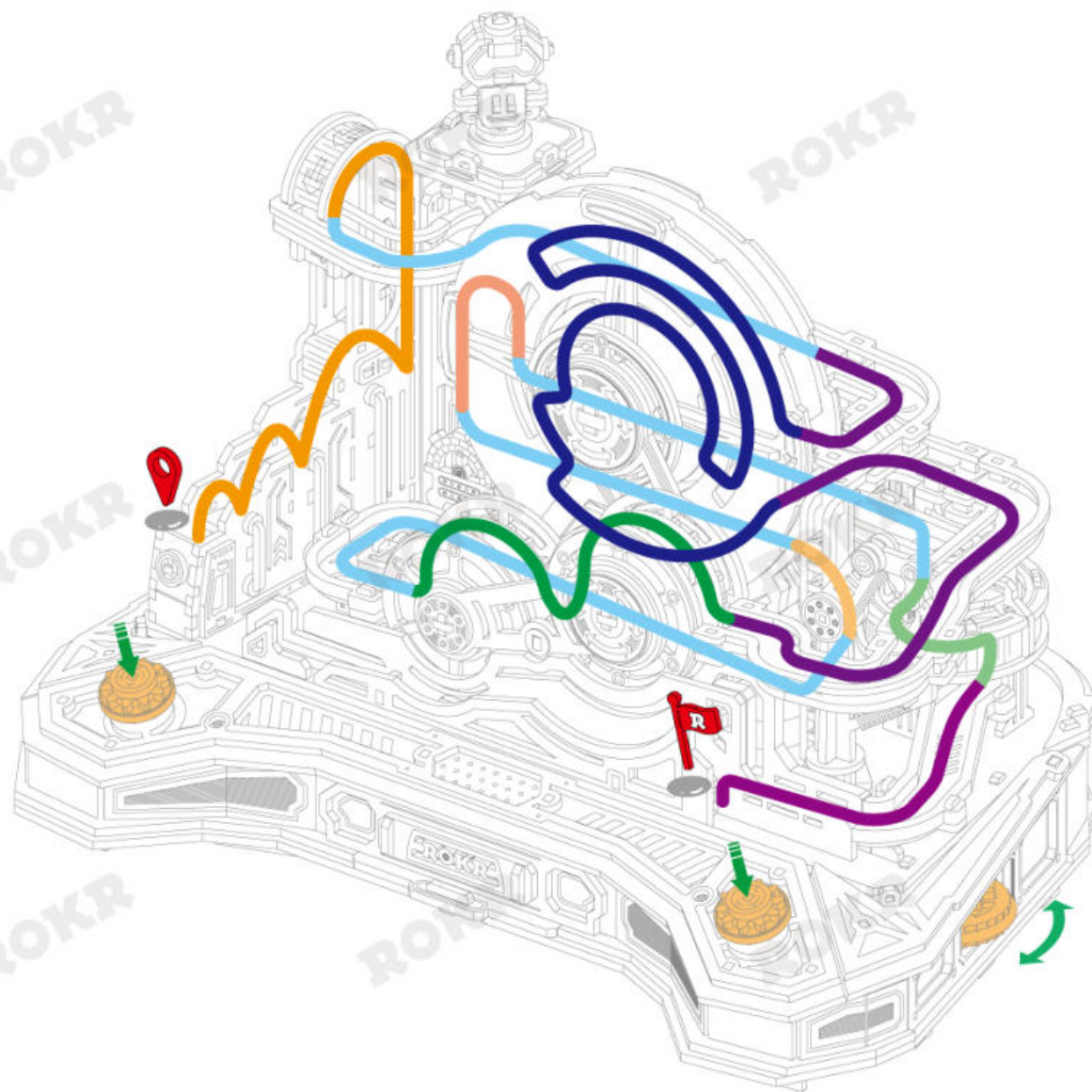
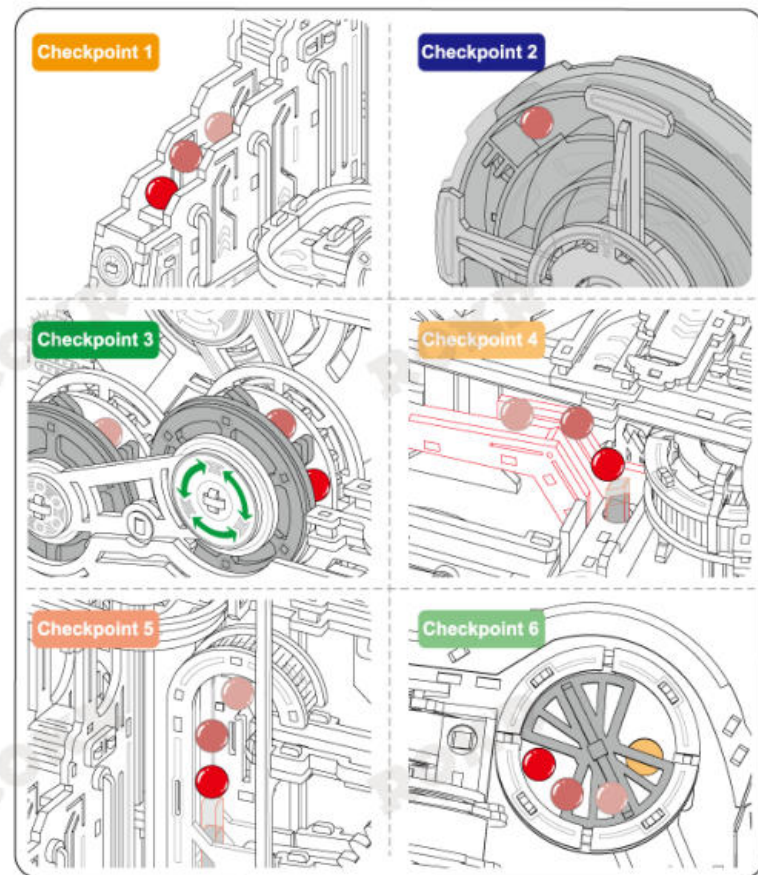






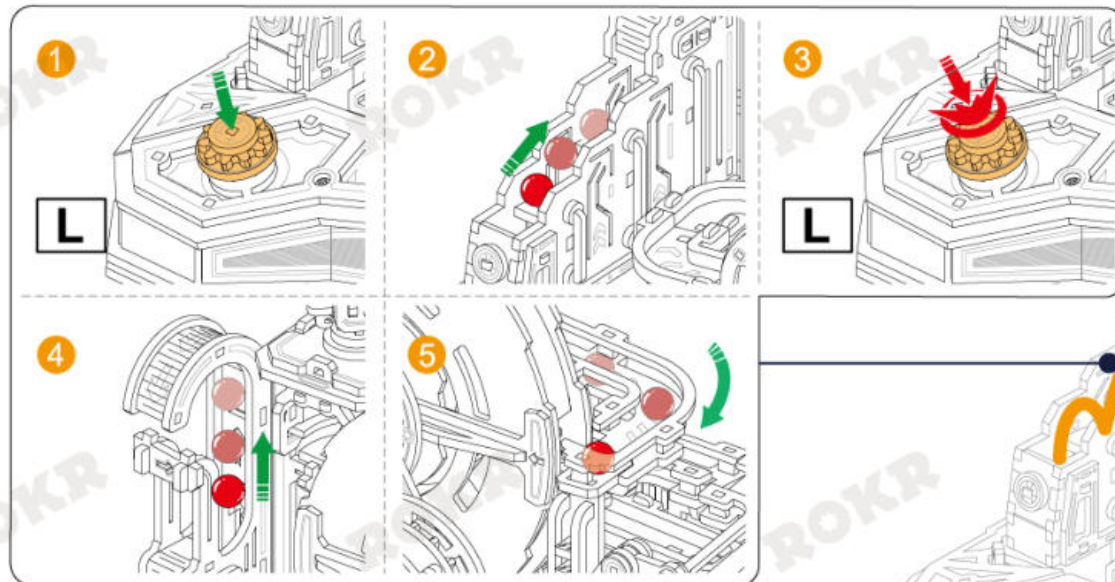
## Rules of the game:

By precisely controlling the **buttons/knobs** on both sides, guide the steel ball **P12** from the starting point through six dynamic checkpoints, and finally arrive at the finish line successfully to trigger the mechanism to raise the victory flag.

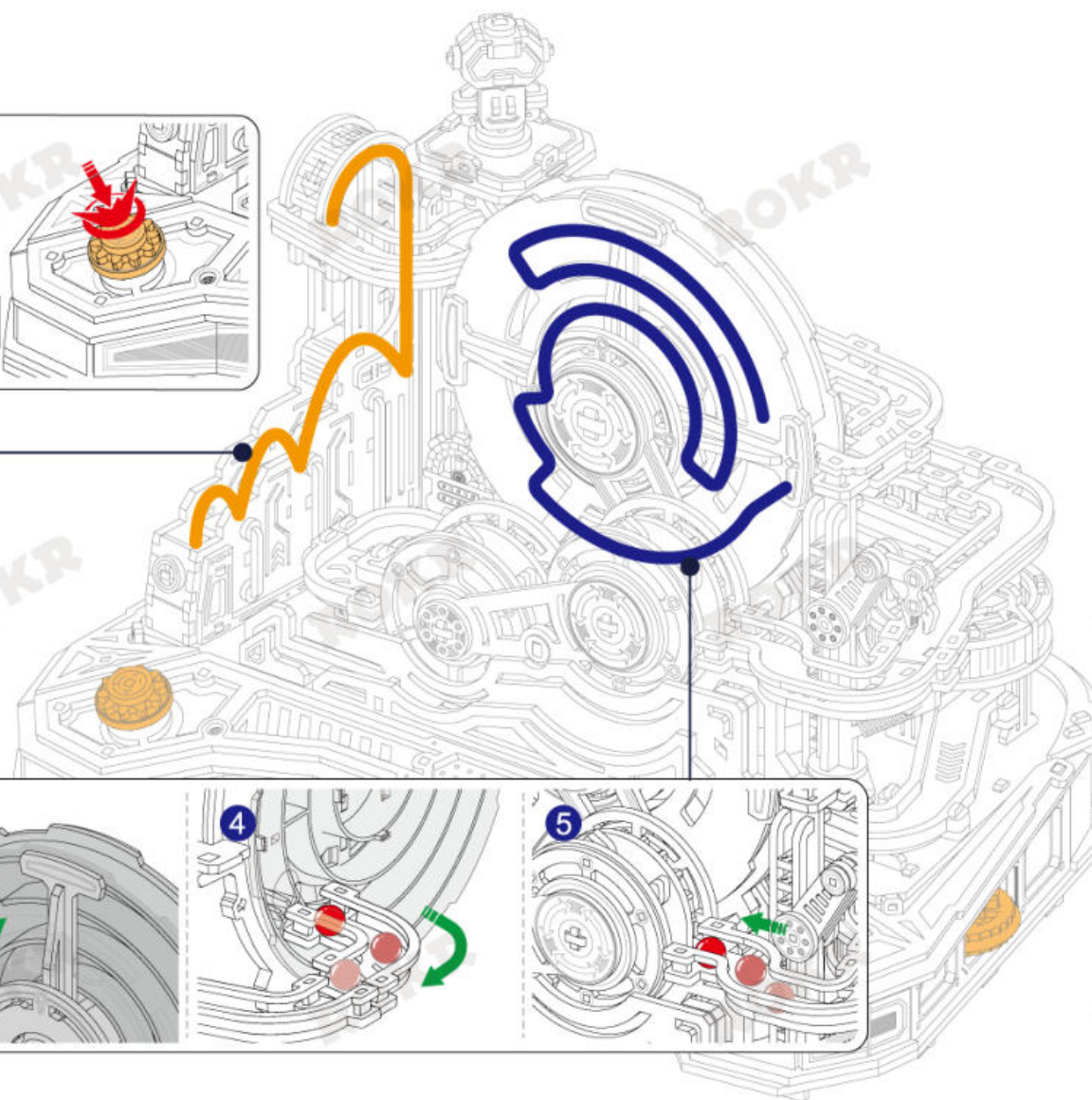
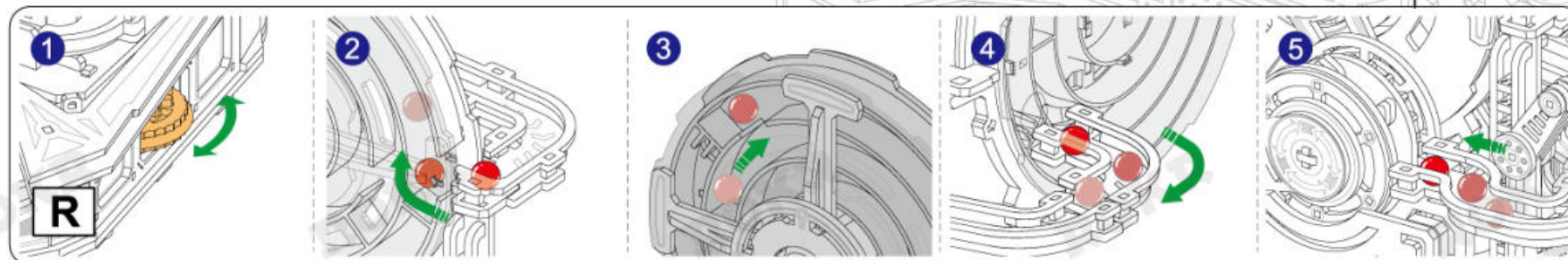




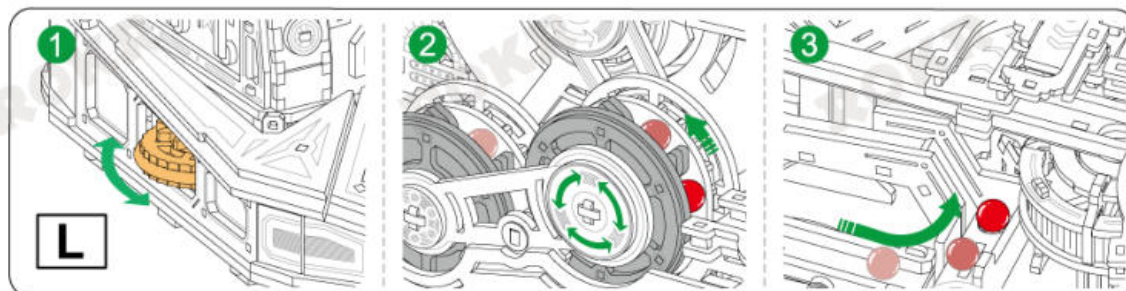
# Checkpoint 1



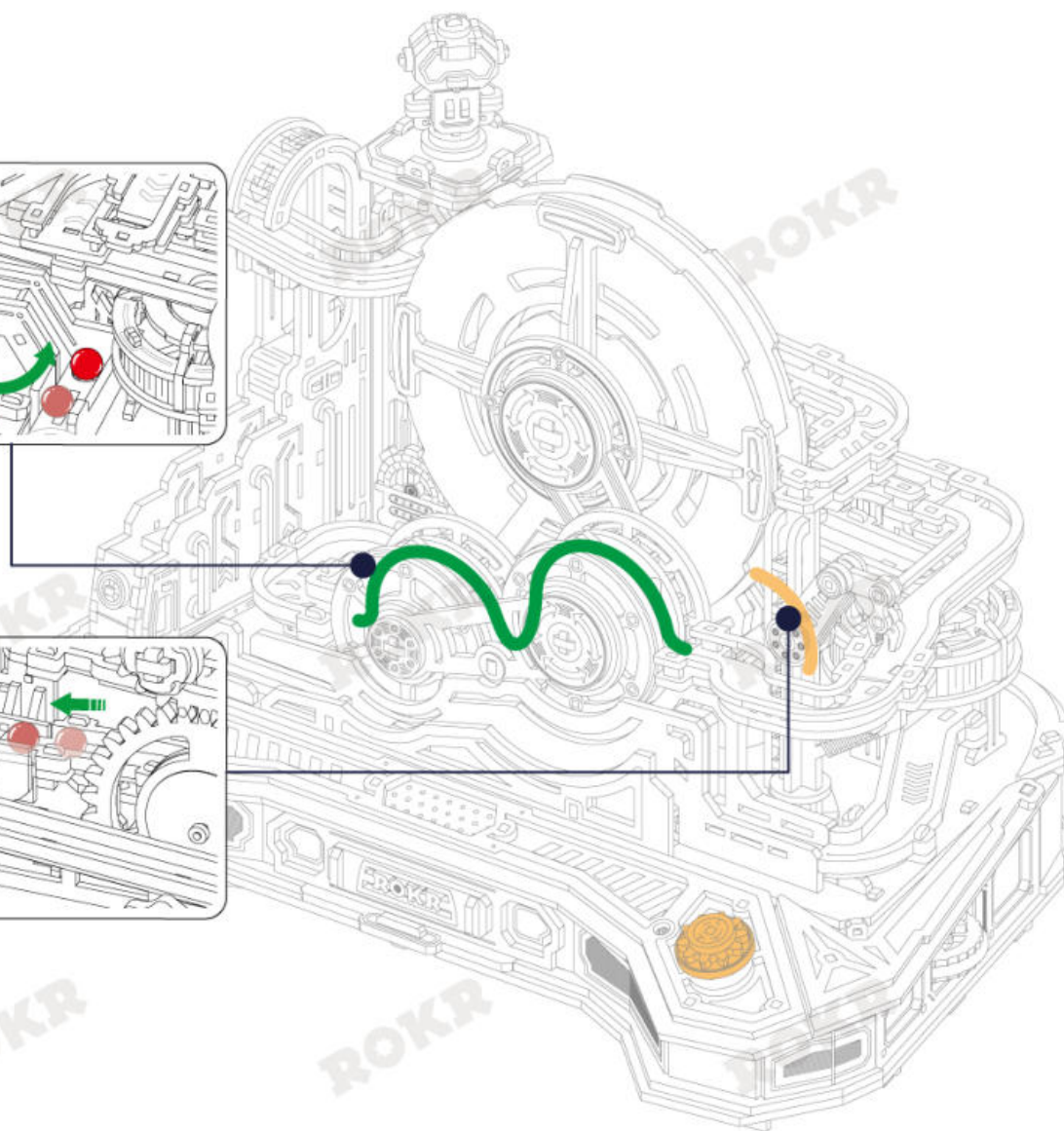
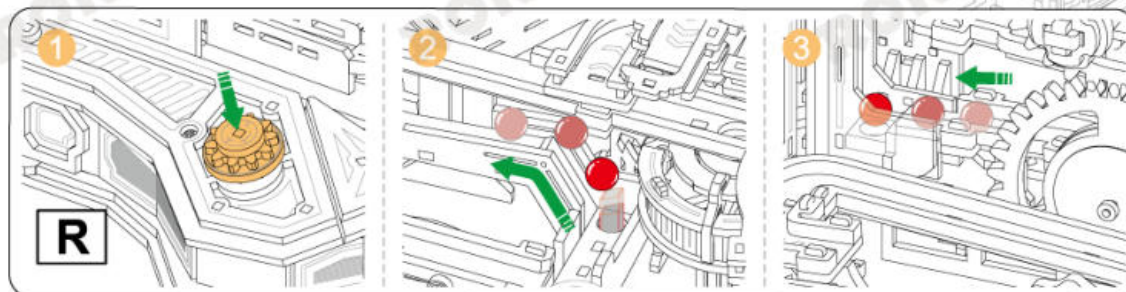
# Checkpoint 2



Checkpoint 3

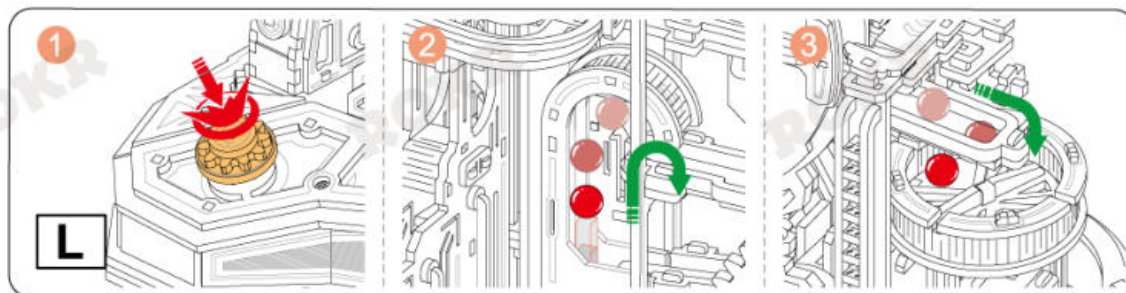


Checkpoint 4

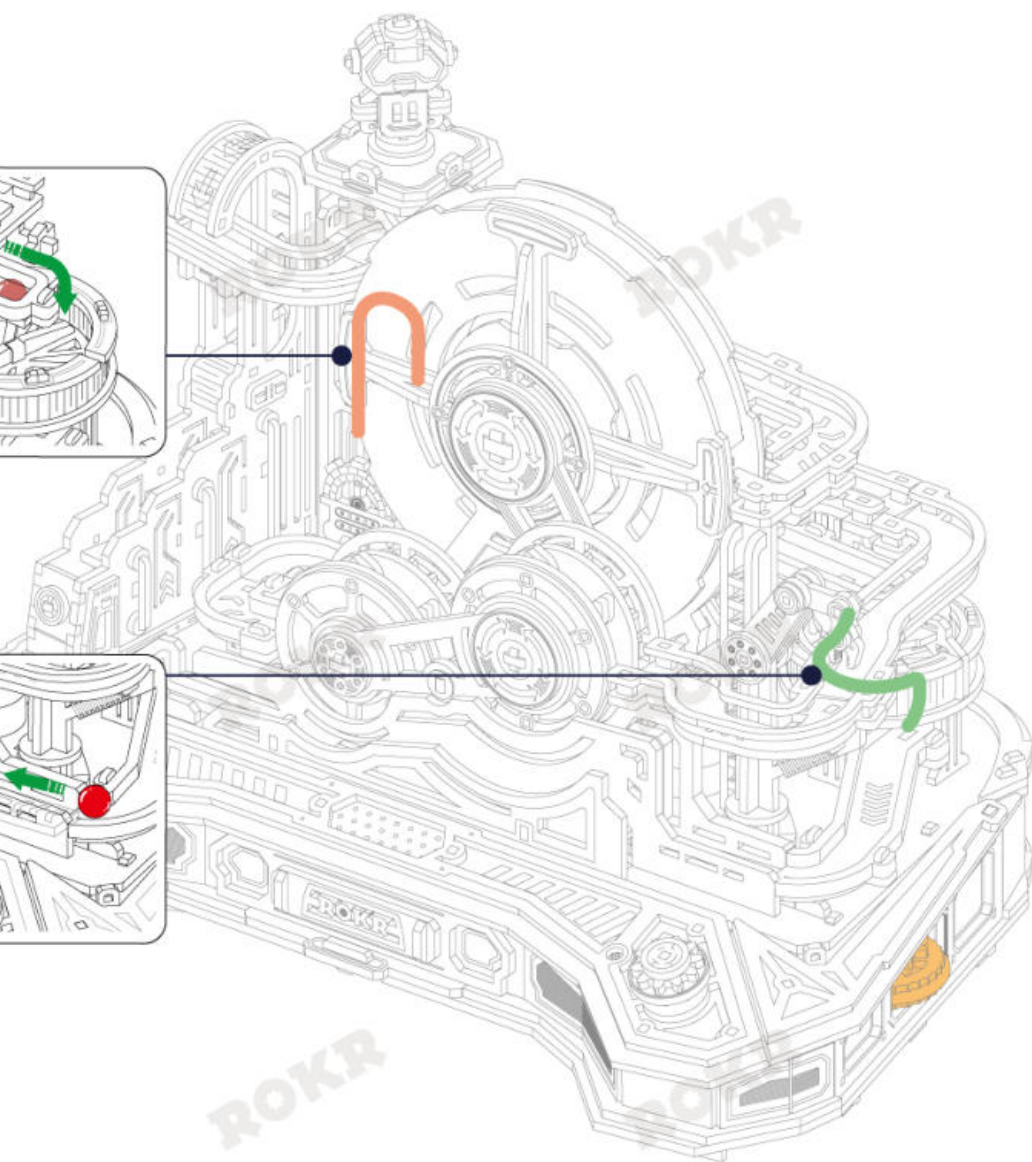
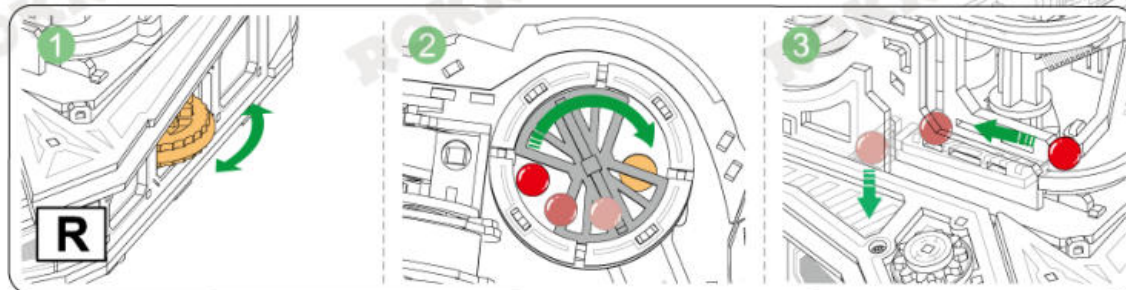




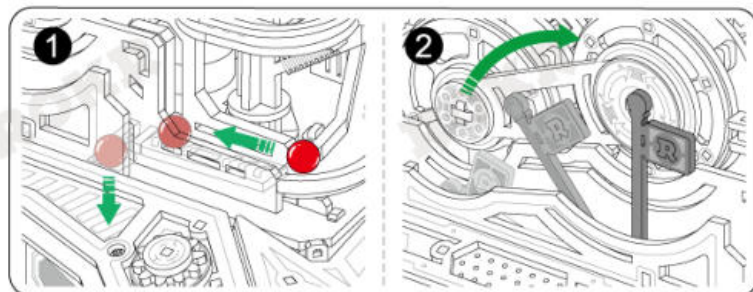
Checkpoint 5



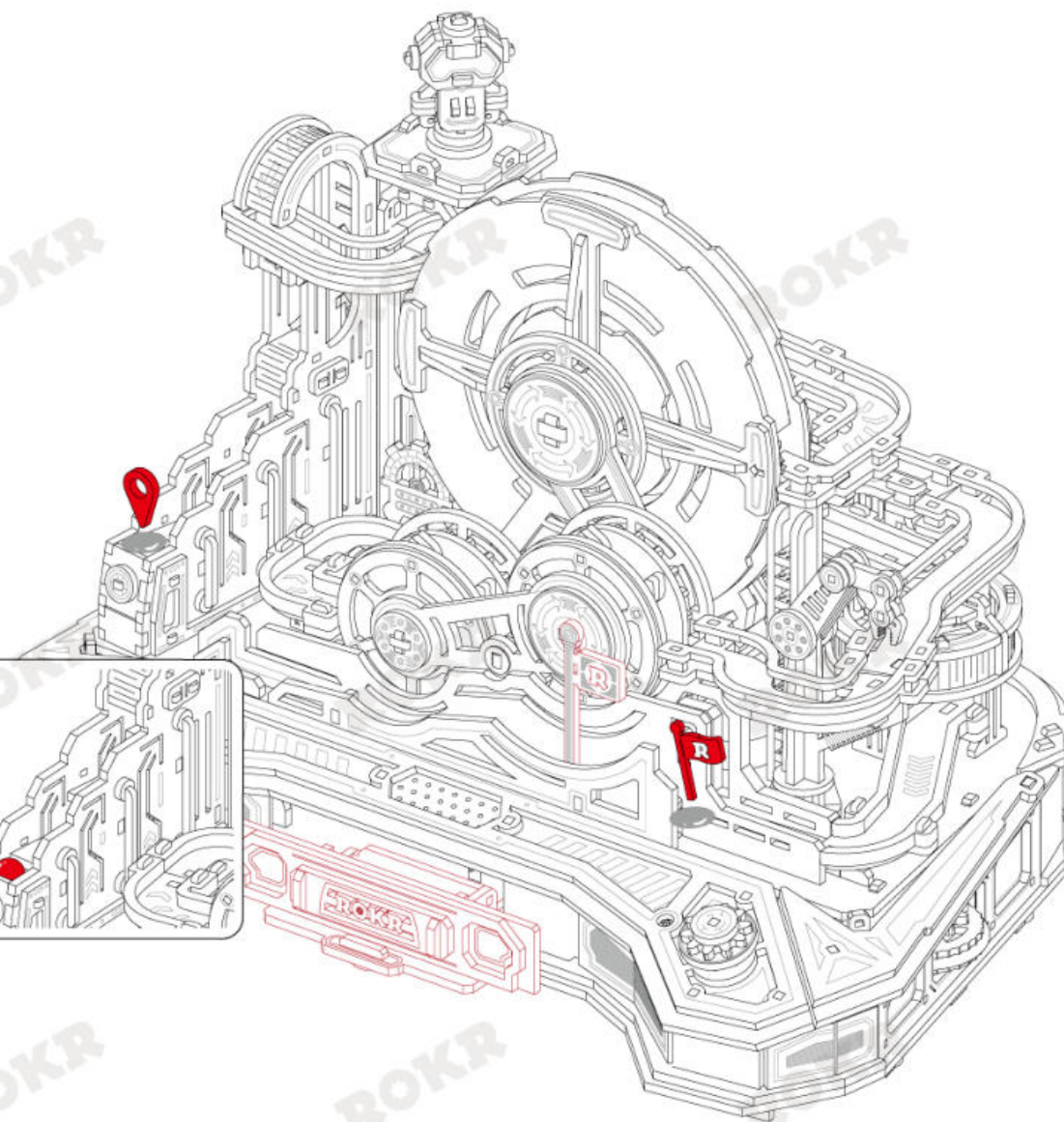
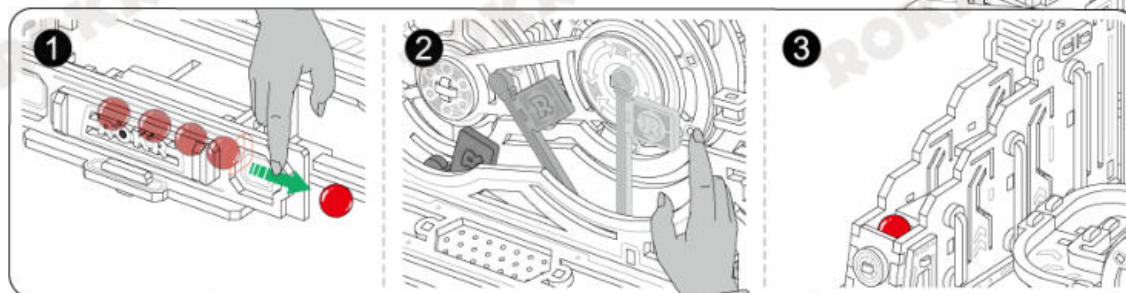
Checkpoint 6



### Victory



### Restart





**ROKR**



[www.robotime.com](http://www.robotime.com)



[store.robotime.com](http://store.robotime.com)