

ROKR[®]

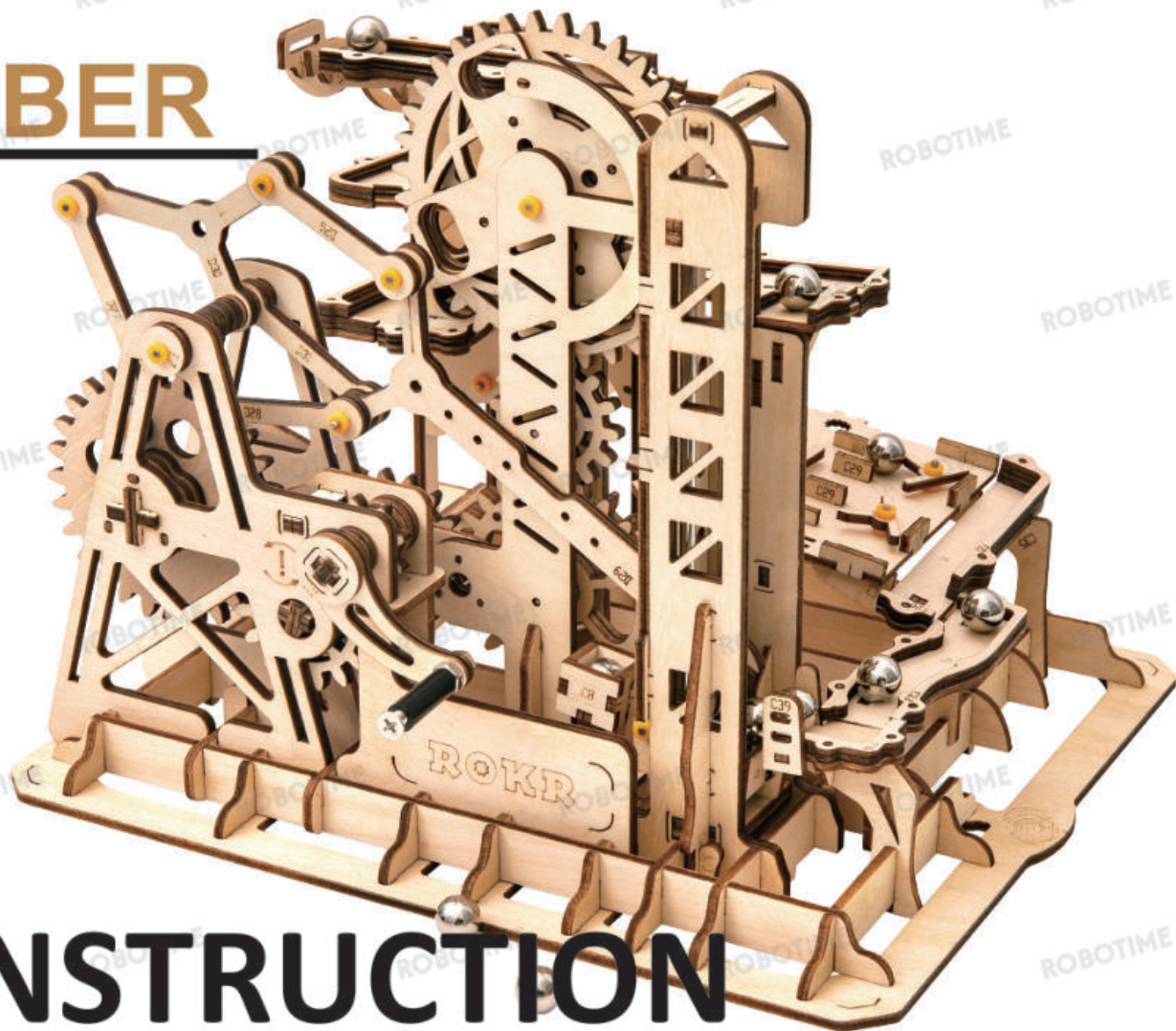
All rights reserved by Robotime Technology(Suzhou)Co.,Ltd.

Files may be downloaded for personal use only, no publication shall be made for any commercial purpose.

MARBLE CLIMBER

LG504-v1

3D WOODEN PUZZLE
MECHANICAL MODELS



ASSEMBLY INSTRUCTION

WARNING:

This product is for people whose age is **over 14**, kids should assemble under the guidance of adults.

MAINTENANCE:

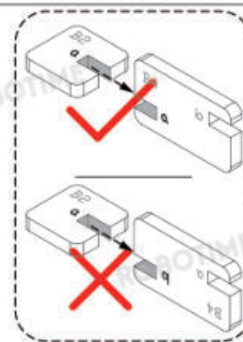
1. Keep the product far away from sources of ignition and water to prevent any damage.
2. Don't use any chemical reagents like alcohol, ammonia water or window cleanser to clean the product.
3. Use clean and soft fabric to clean the product if necessary.



Scan me, know me.

ATTENTION

- Store the **small parts** away after opening the package prevent losing when assembling.
- Make sure that **the numbers match to their corresponding number** while assembling.
- **Additional pieces** can be used as **spare parts**.
- For some difficult assembling steps, you can **scan the QR codes for assembly videos**.
- Use the **sandpaper** to **polish the pieces** if needed.
- Please **keep the manual well** for future reference.



*CUSTOMER SERVICE

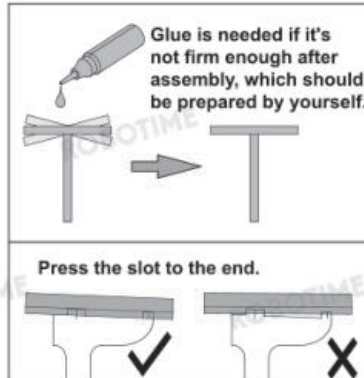
Facebook: [RokrOfficial](#)

Please contact us on Facebook, our online customer service group will try their best to help you solve any problems there. We offer online instruction support, you can find the latest version on our website: www.robotime.com.

FQA

PROBLEM	CAUSE	SOLUTION
The assembly could not rotate freely.	1 The friction between boards is excessive. 2 The connecting points are not smooth.	1 Wax related parts. 2 Polish the connecting points with sandpaper and make sure each part is well assembled.
The marble gets stuck in the track.	1 The slot is not connected to the end correctly. 2 The track is not inclined appropriately.	1 Press the slot to connect it properly with the end. 2 Check if the tracks are engaged with each other appropriately and make sure each parts are well assembled.

Tips:



Parts List

Item	Shaft Sleeve	Steel Shaft	Steel Shaft	Steel Shaft	Steel Shaft	Steel Shaft	Steel Shaft	Steel Shaft
Number	P1	P2	P3	P4	P5	P6	P7	P8
Illustration								
Quantity	40	2	9	4	1	1	1	2

Item	Steel Shaft	Isolation Column	Screw	Screw Nut	Steel Ball	Sealing Sticker	Wax
Number	P9	P10	P11	P12	P13	P14	P15
Illustration							
Quantity	2	1	1	2	10	1	1



Make sure the gears are appropriately engaged with each other



Polish the parts with sandpaper



Make sure the parts could rotate freely



Perspective changed. Rotate the product based on the direction of arrow



Special attention in assembly



Complete 2 pieces



Assemble the parts symmetrically



Wax or lubricant needed

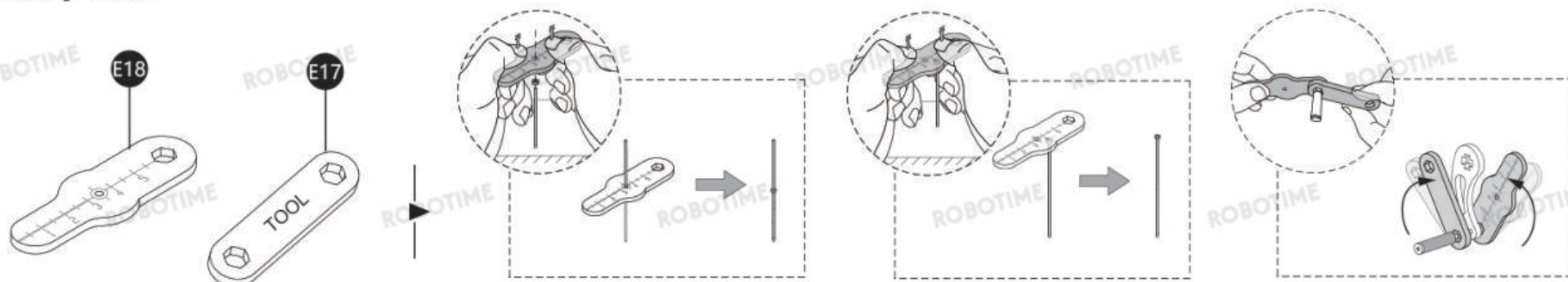


Step1



Step2

Assembly Tools



1

A1

B1

B2

B3

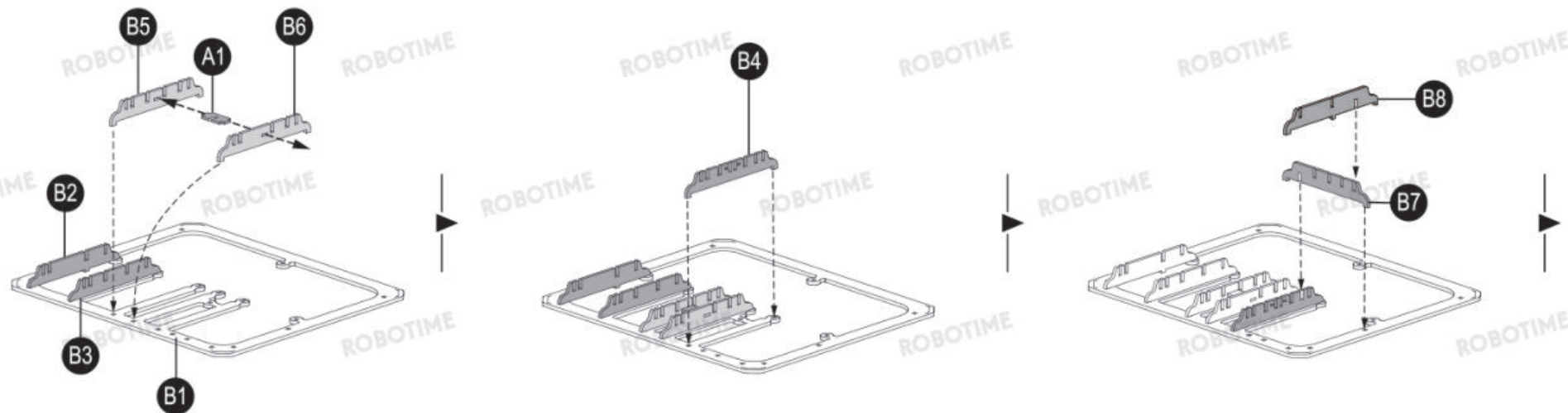
B4

B5

B6

B7

B8



B9

B24

B25

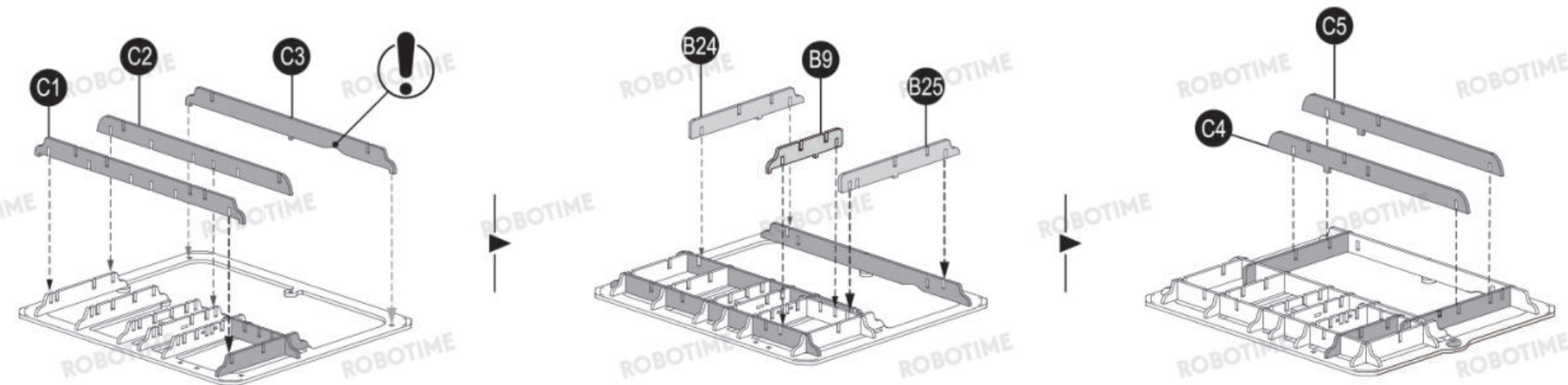
C1

C2

C3

C4

C5



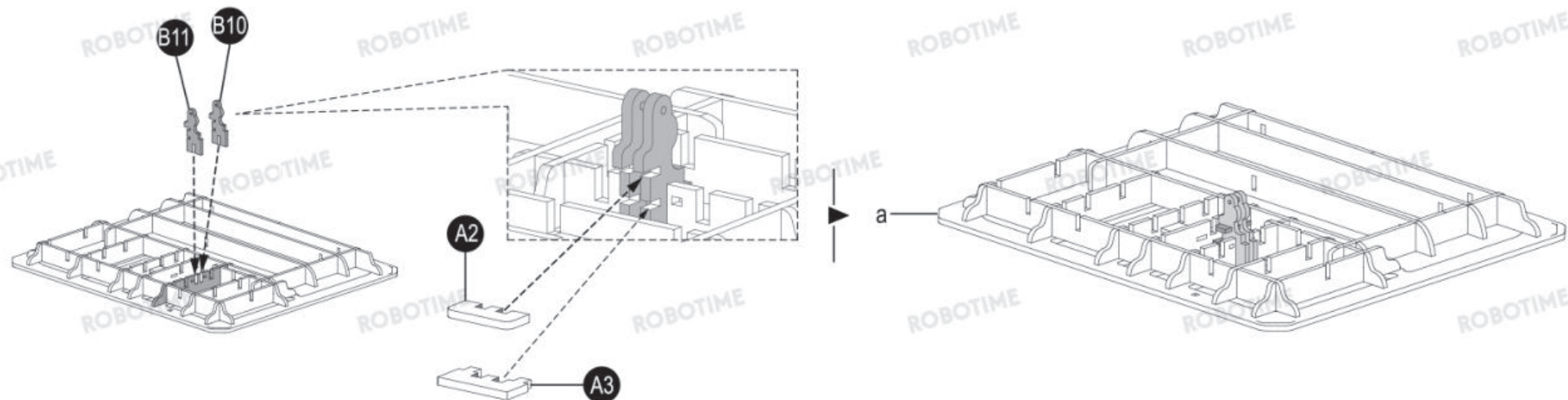
2

A2

A3

B10

B11



3

A4

A5

B14

B15

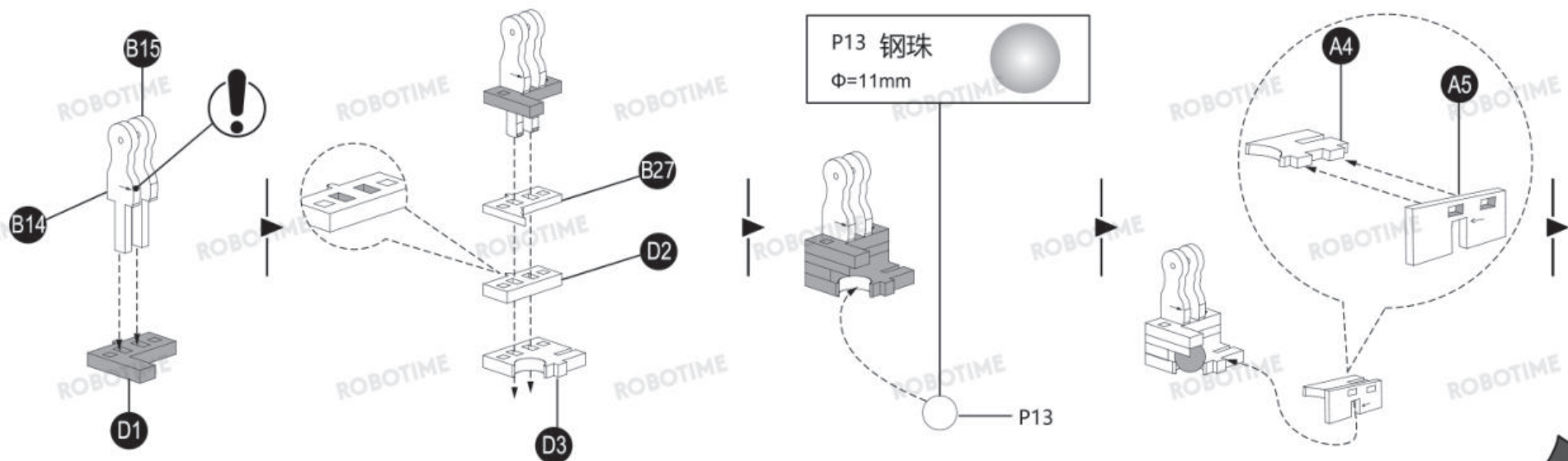
B27

D1

D2

D3

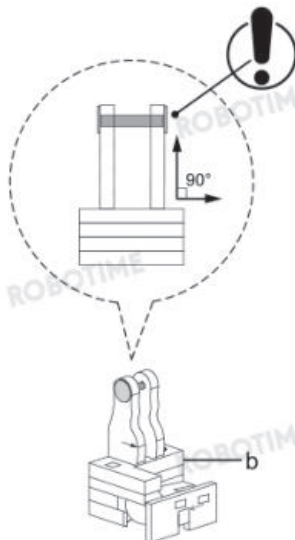
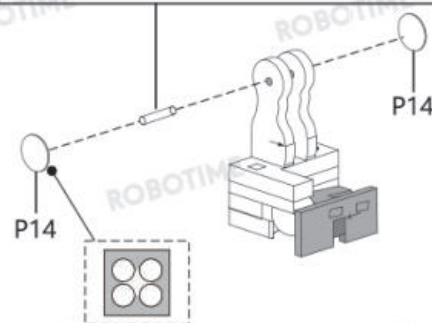
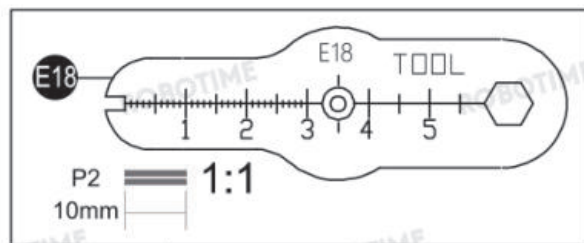
P13



E18

P2

P14 x2



4

A6

B12

B13

B16 x2

B17

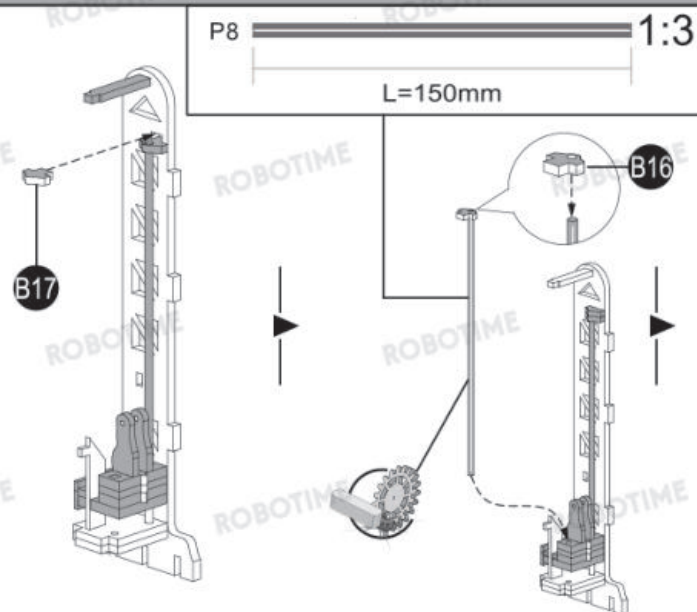
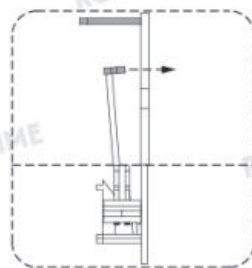
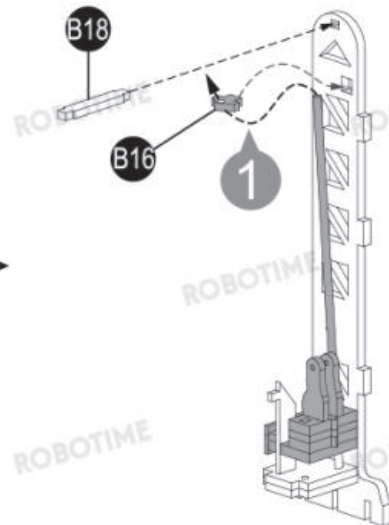
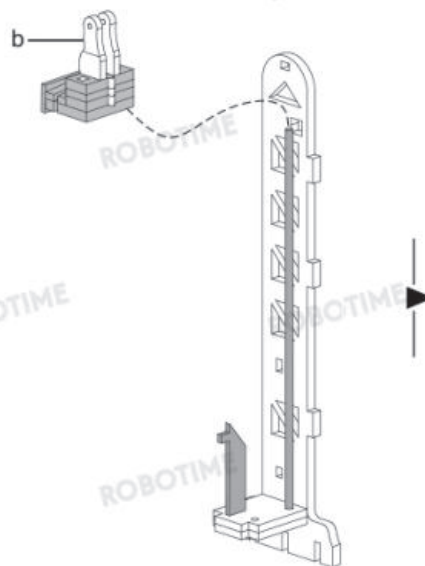
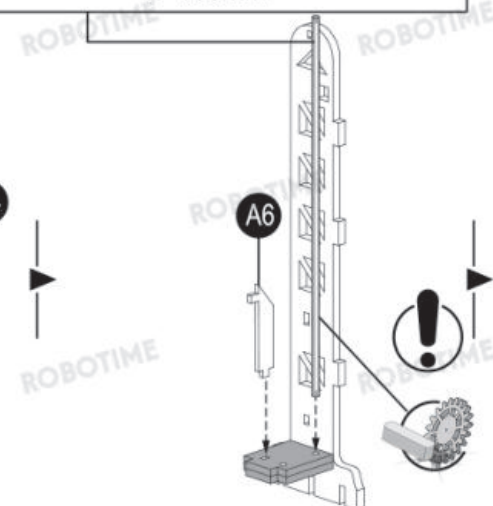
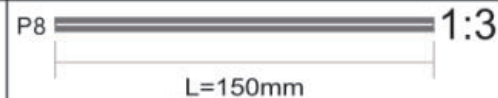
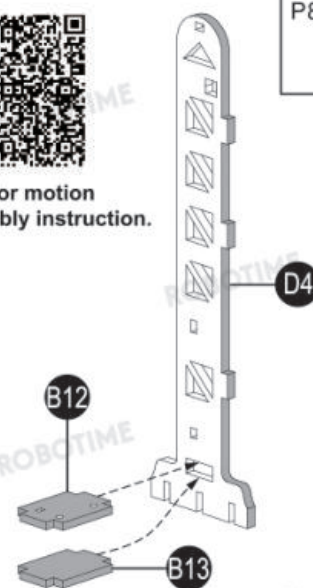
B18

D4

P8 x2



Scan for motion
assembly instruction.



B17

B19

B20

B21

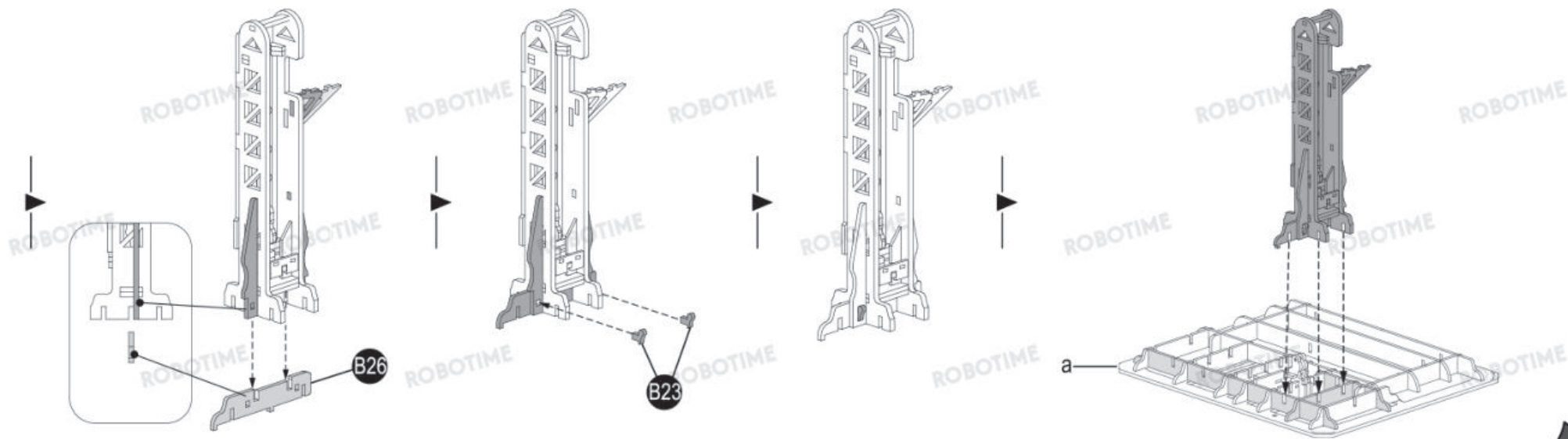
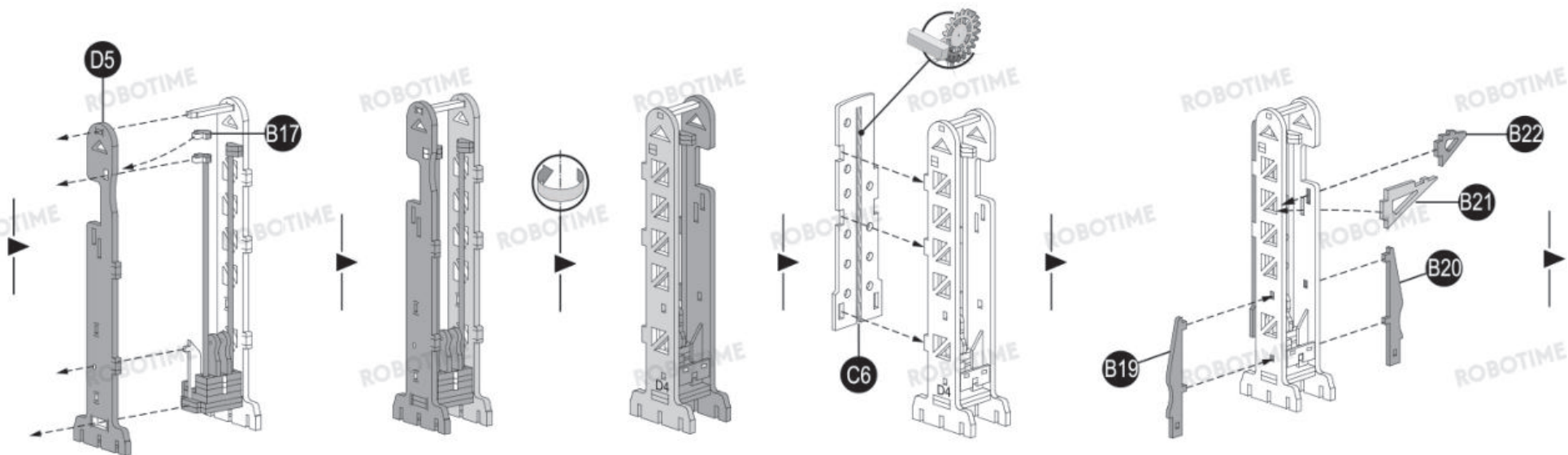
B22

B23 x2

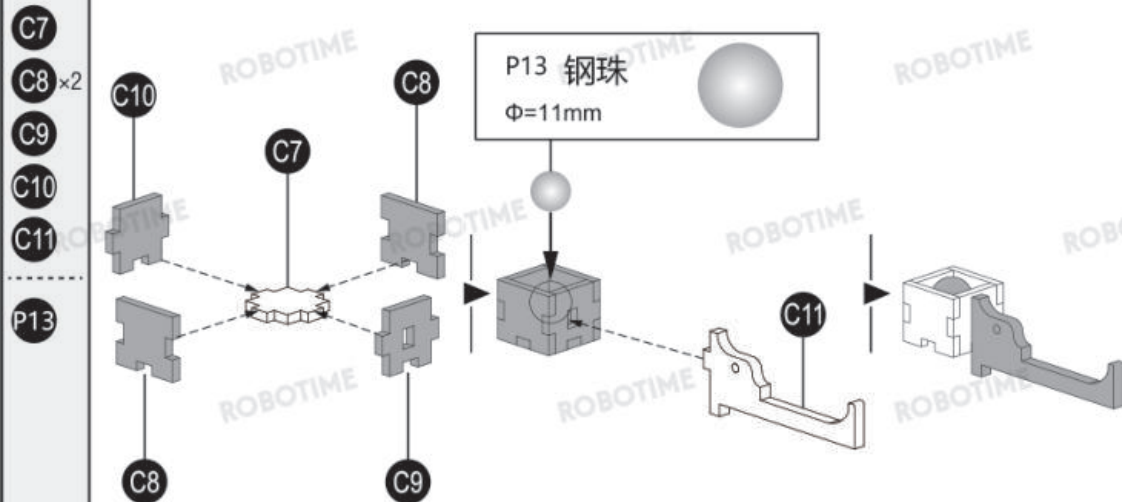
B26

C6

D5

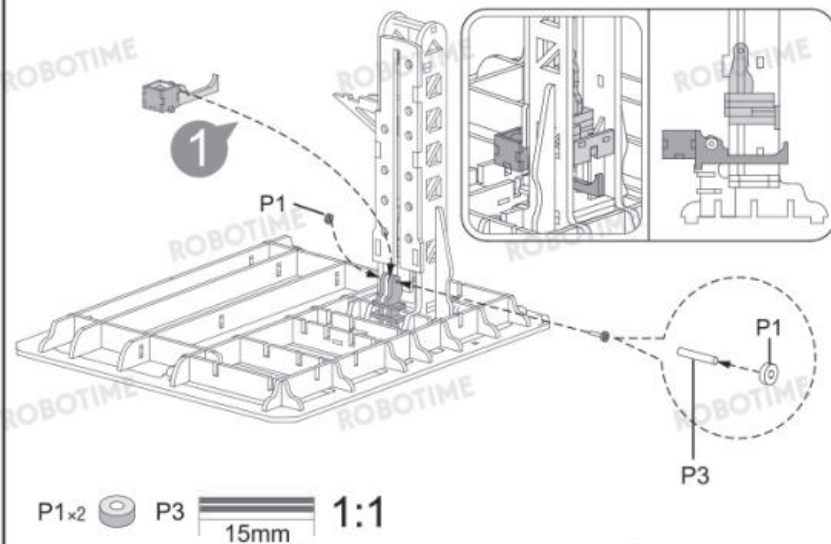


5



6

P1 ×2
 P3



7

A7

D17

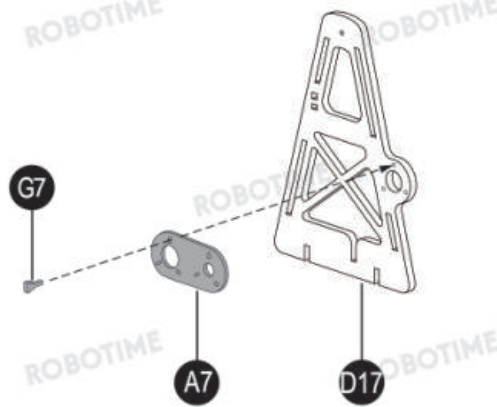
E4

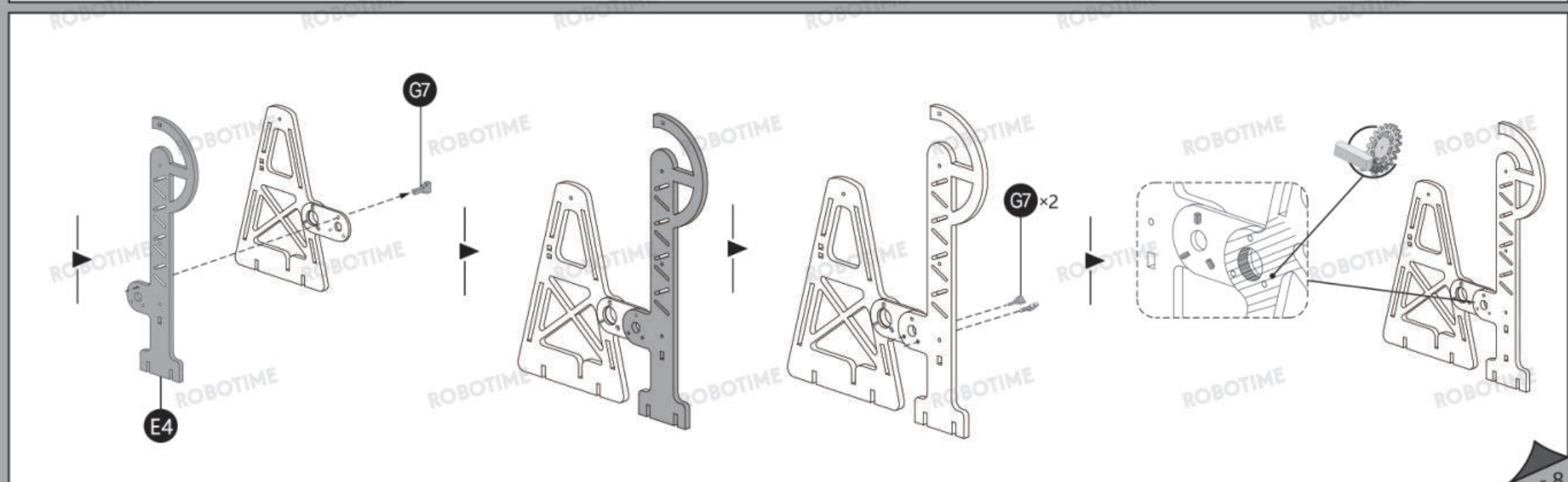
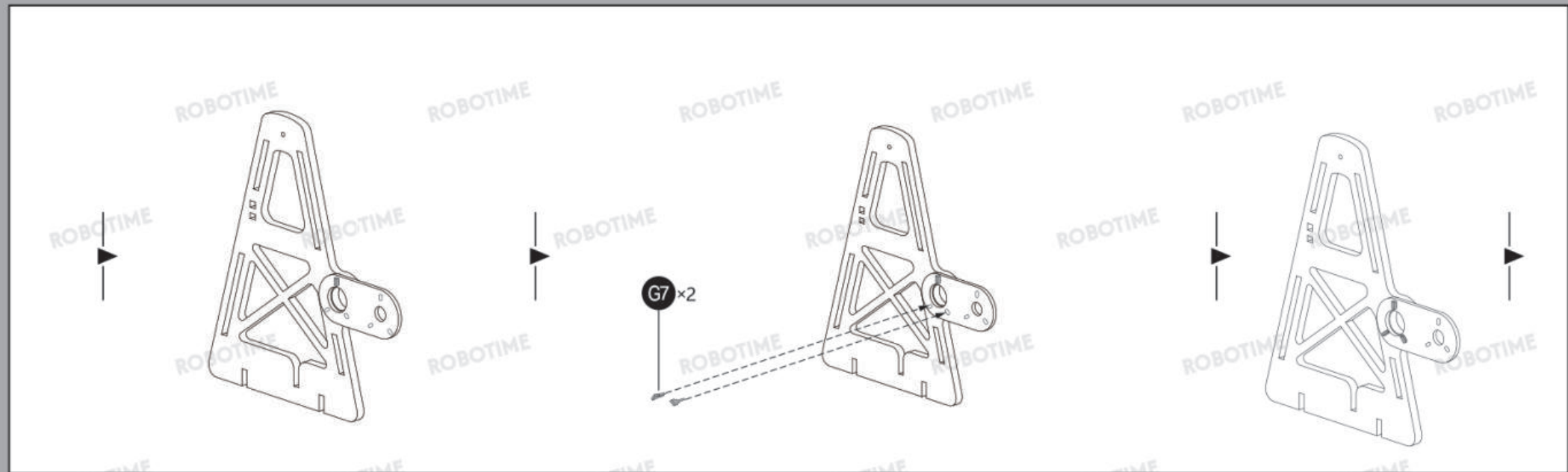
G7 ×6

G7

A7

D17





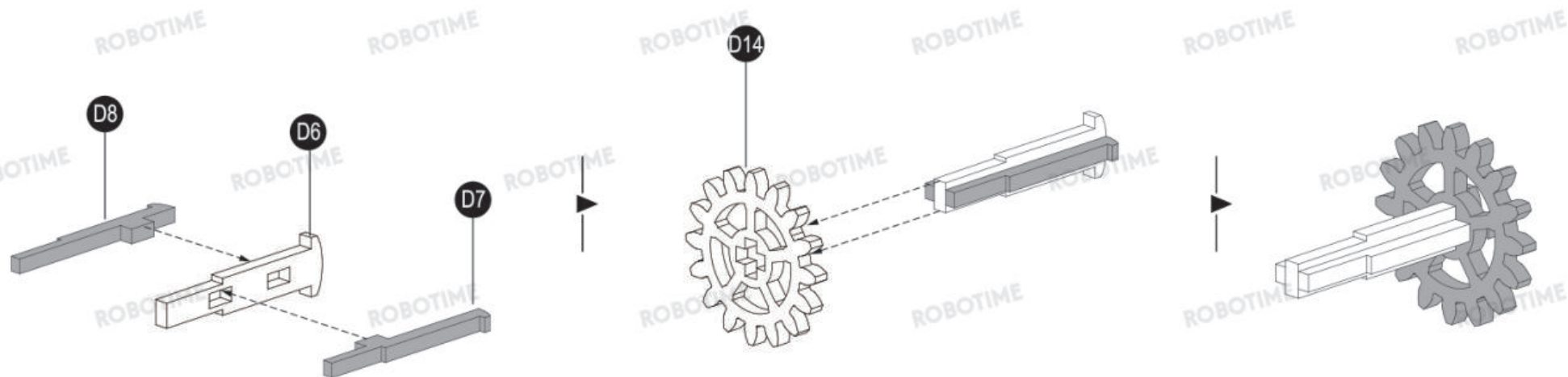
8

D6

D7

D8

D14



9

A8

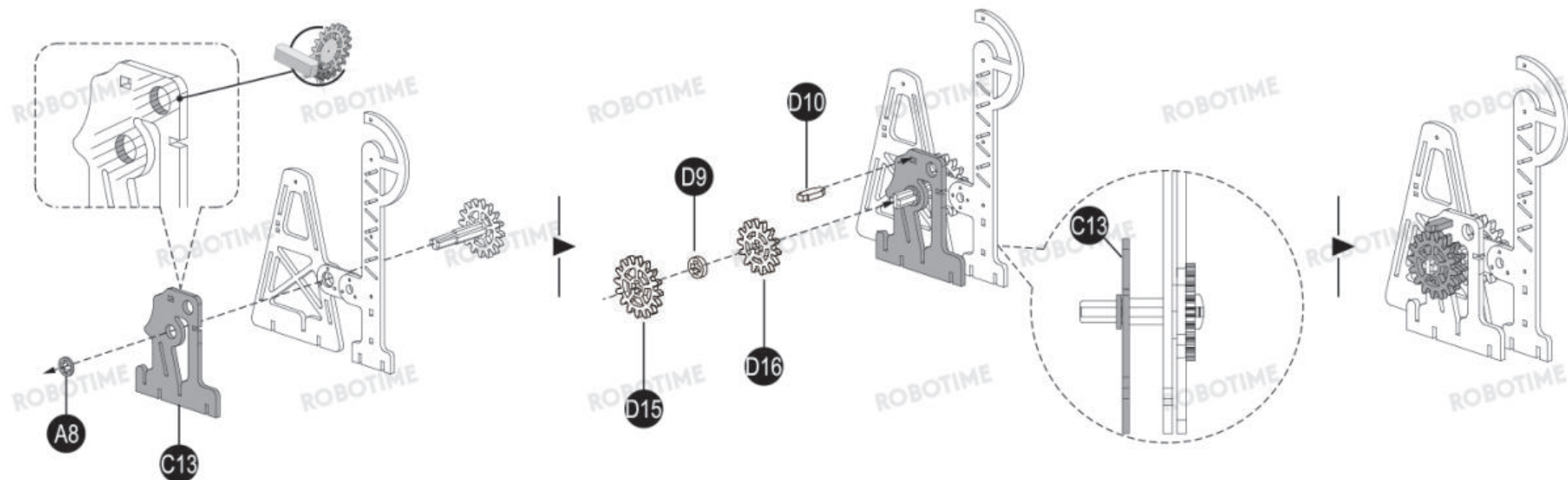
C13

D9

D10

D15

D16



10

A8

D11

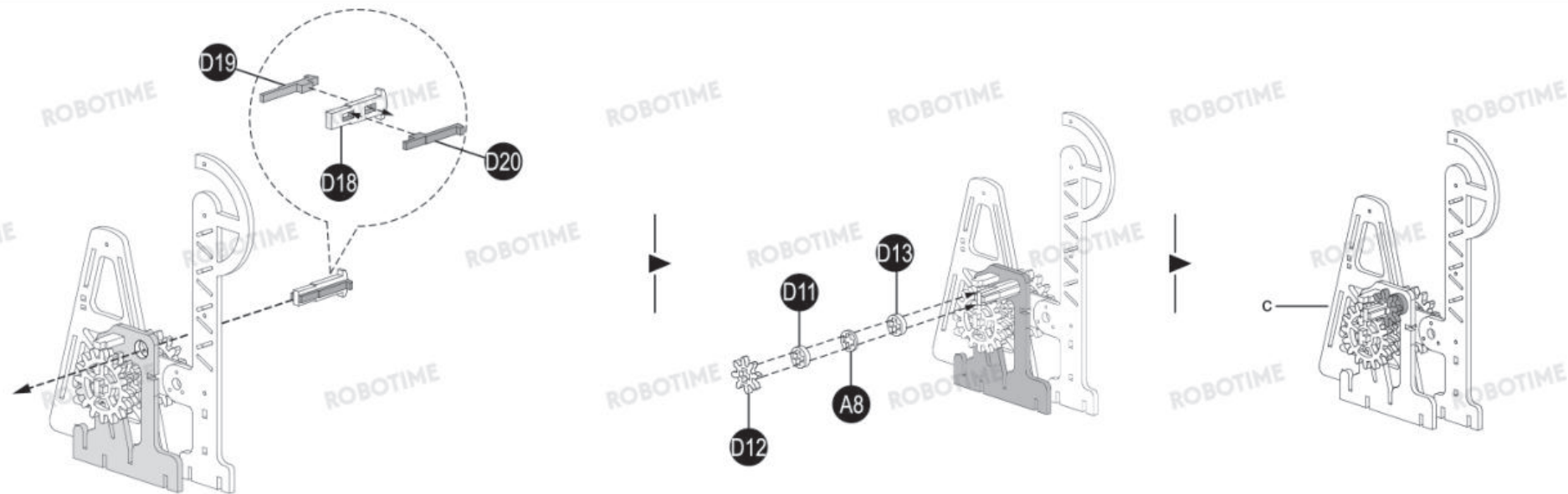
D12

D13

D18

D19

D20

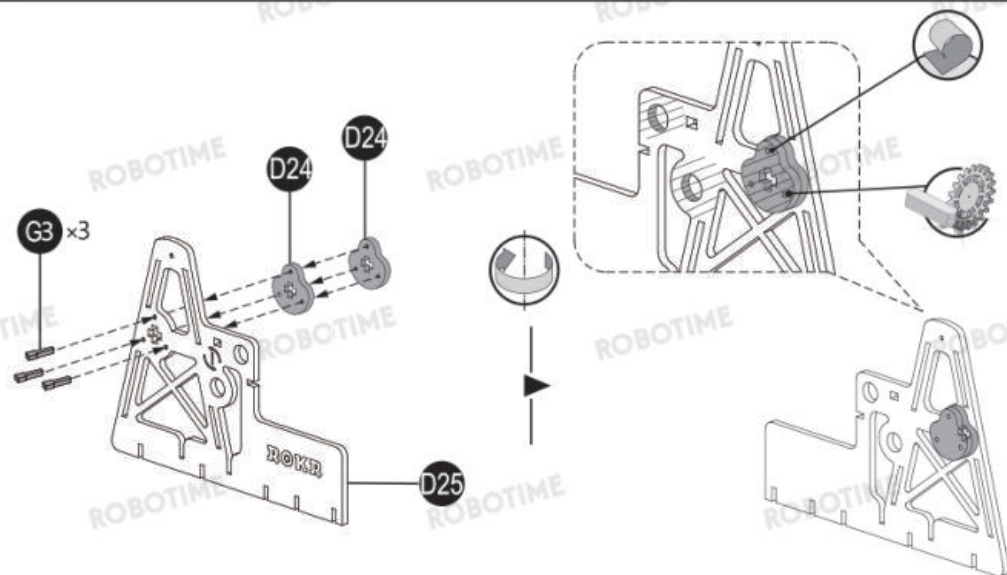


11

D24 x2

D25

G3 x3

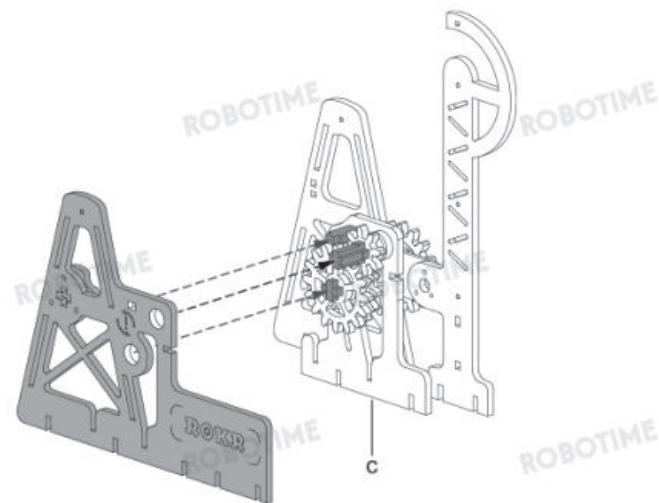


12

C12

C14

C15



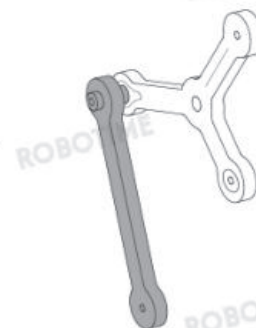
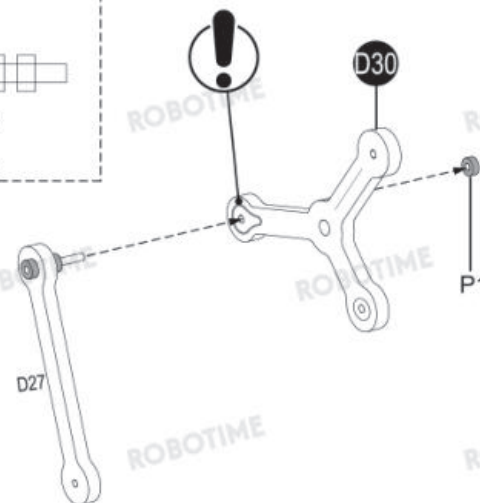
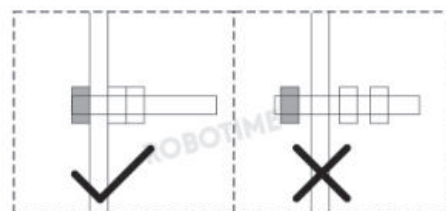
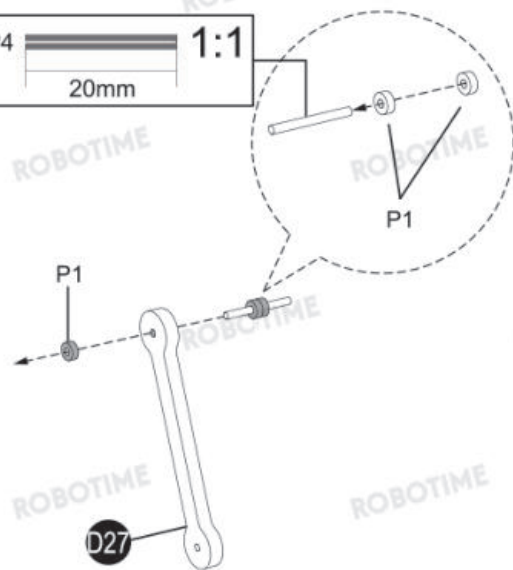
13

D27

D30

P1 x4

P4



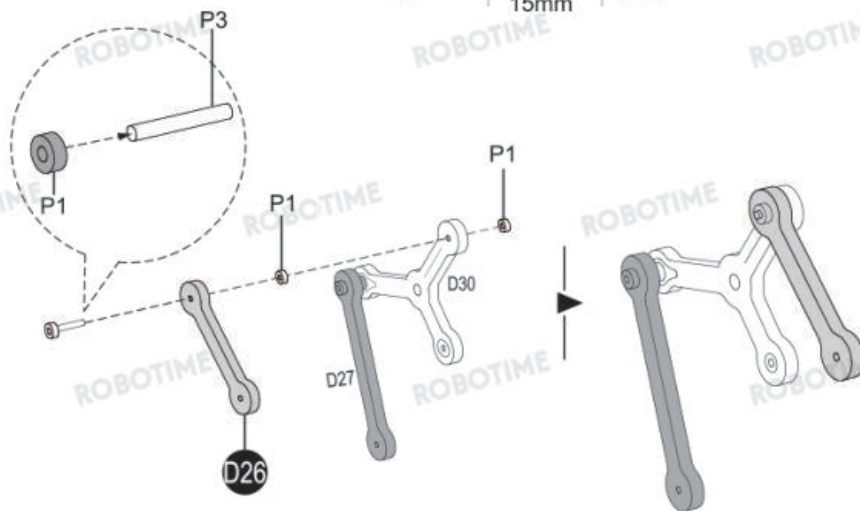
14

D26

P1 x3

P3

P1 x3 P3 15mm 1:1



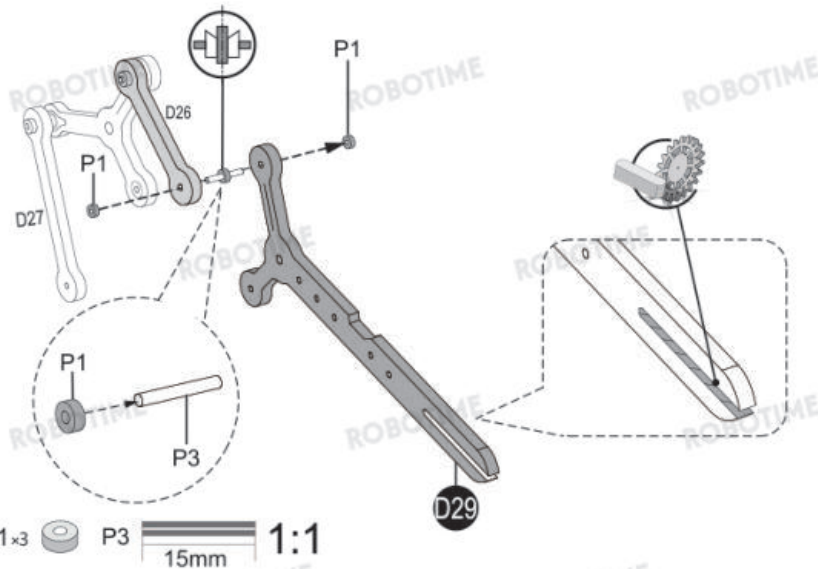
15

D29

P1 x3

P3

P1 x3 P3 15mm 1:1



16

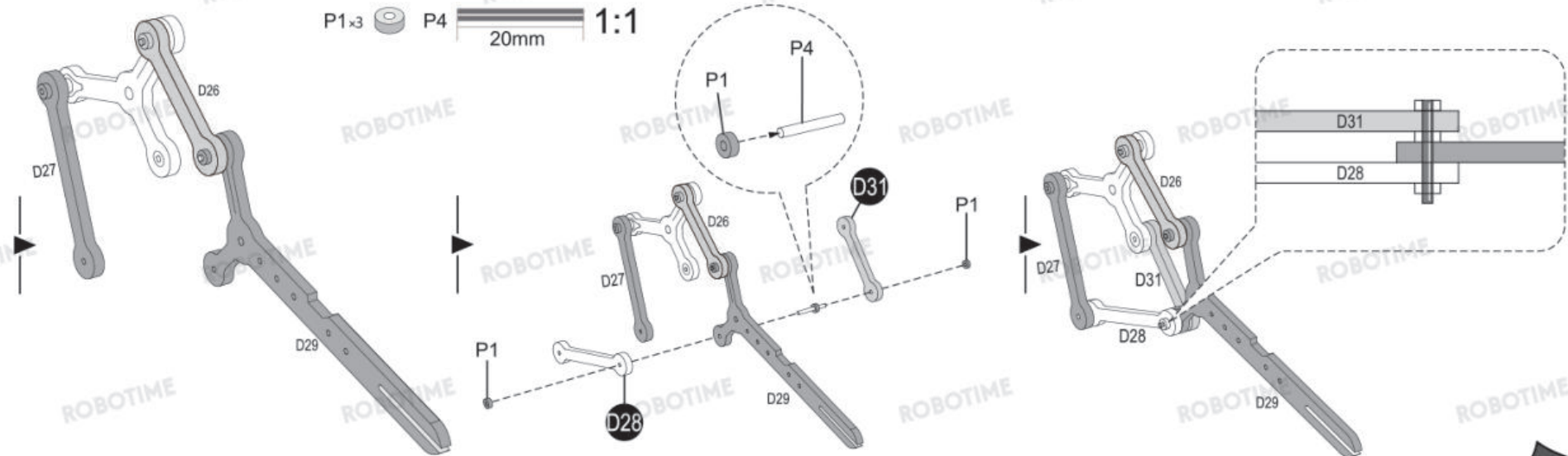
D28

D31

P1 x3

P4

P1 x3 P4 20mm 1:1



17

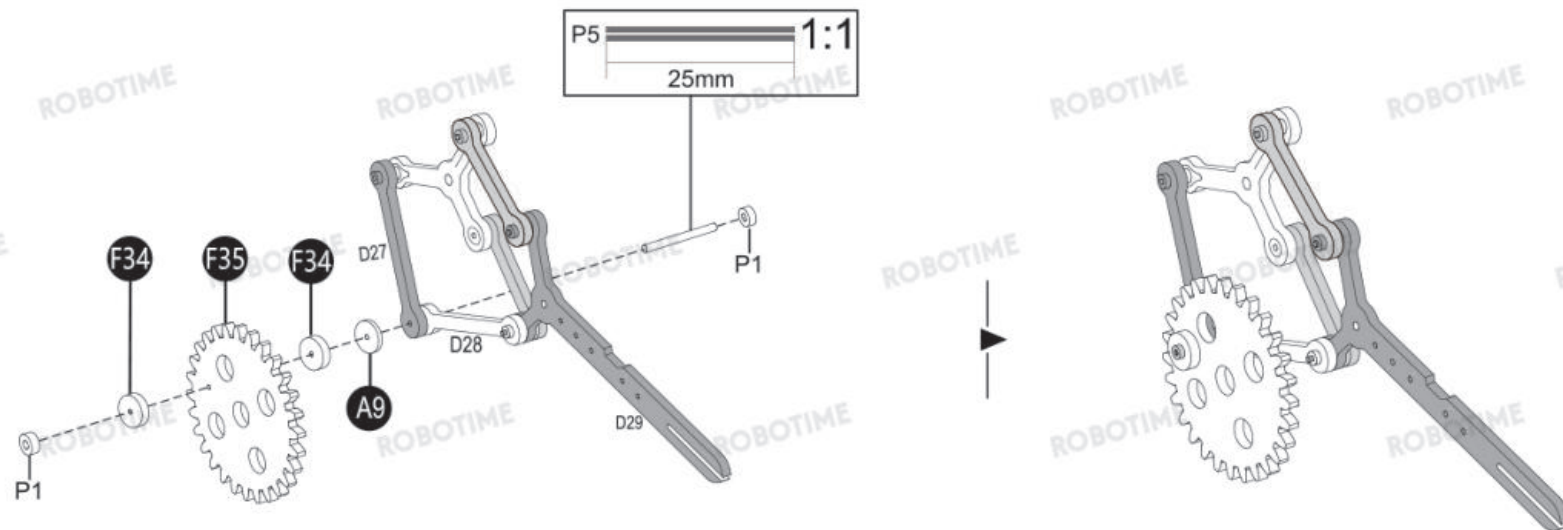
A9

F34×2

F35

P1×2

P5

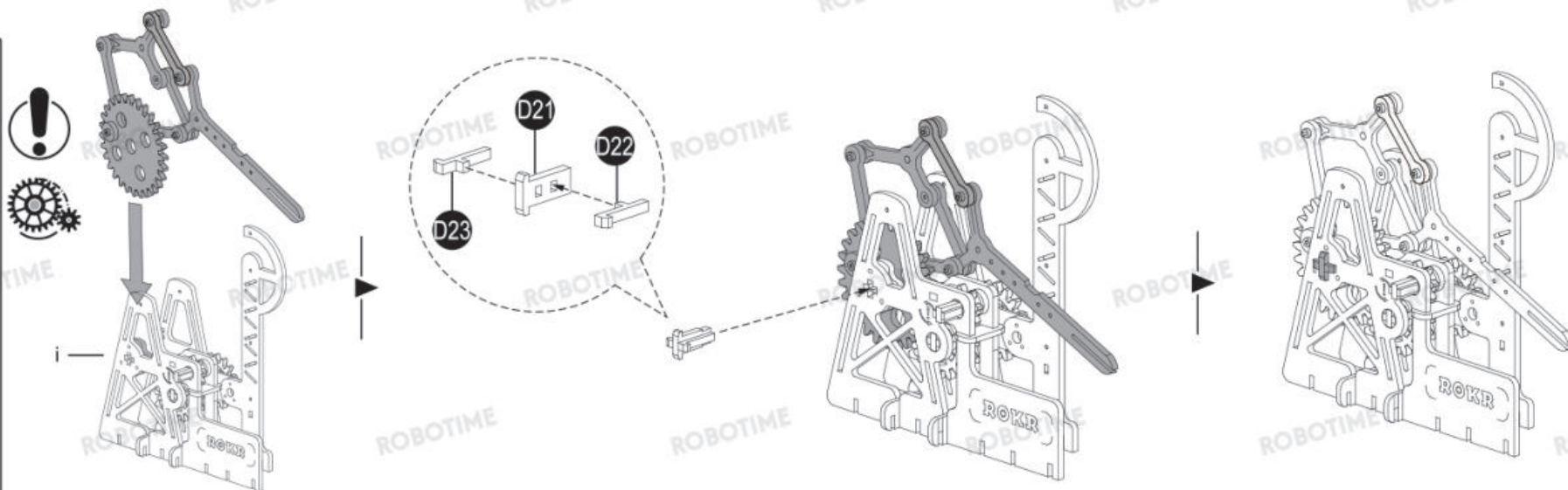


18

D21

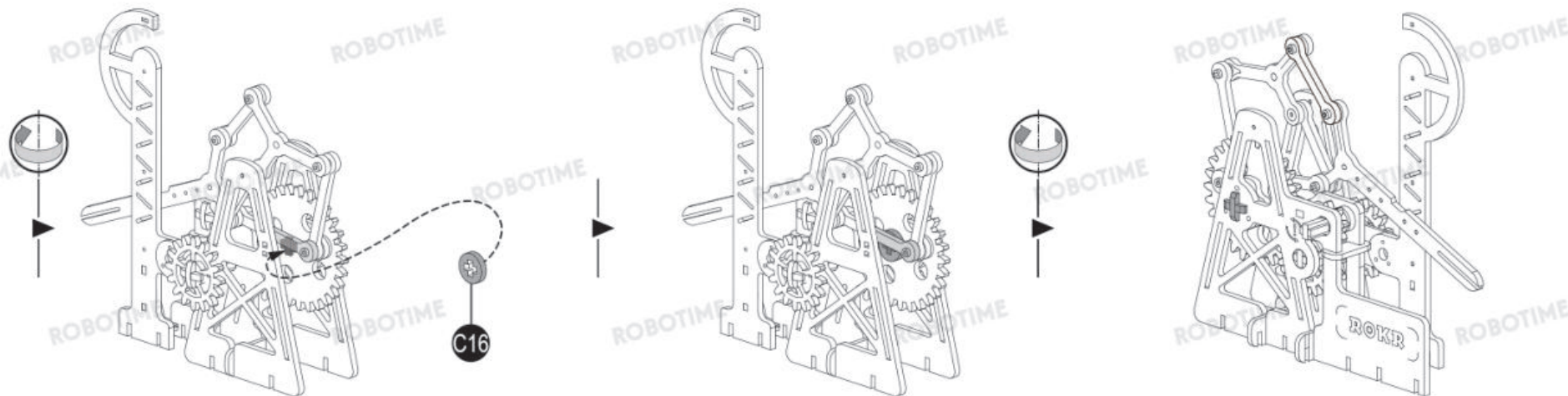
D22

D23



19

C16



20

P1x2 P7

60mm

1:1

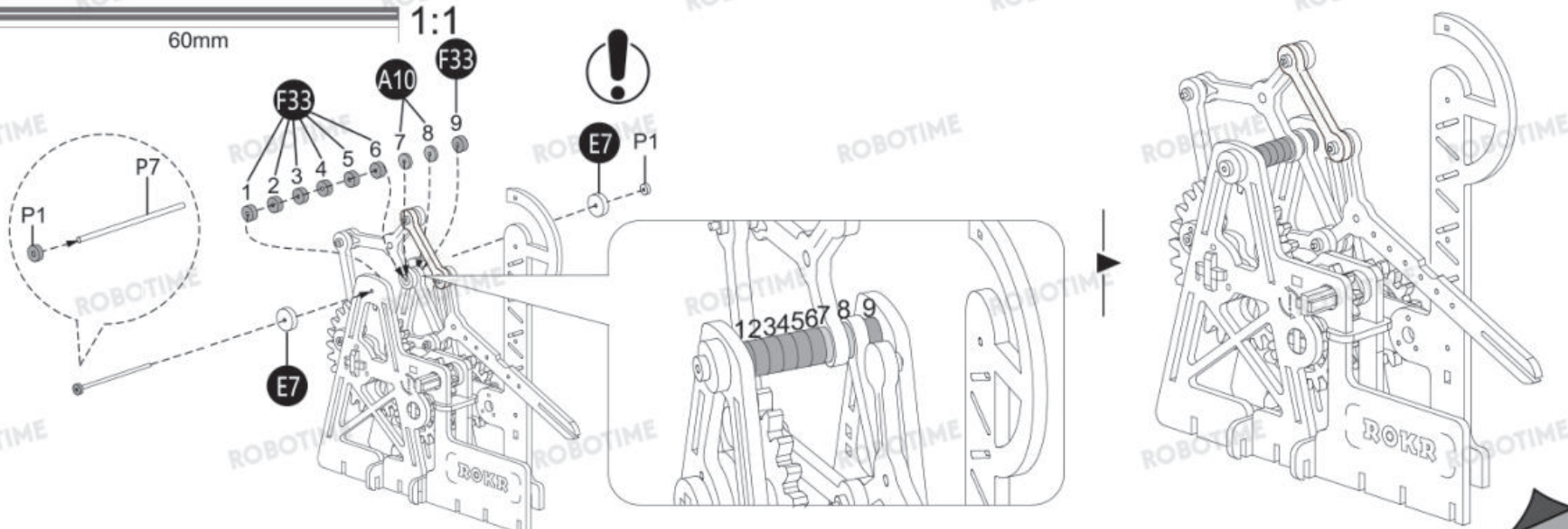
A10x2

E7x2

F33x7

P1x2

P7



21

A11

E3

E5

E6

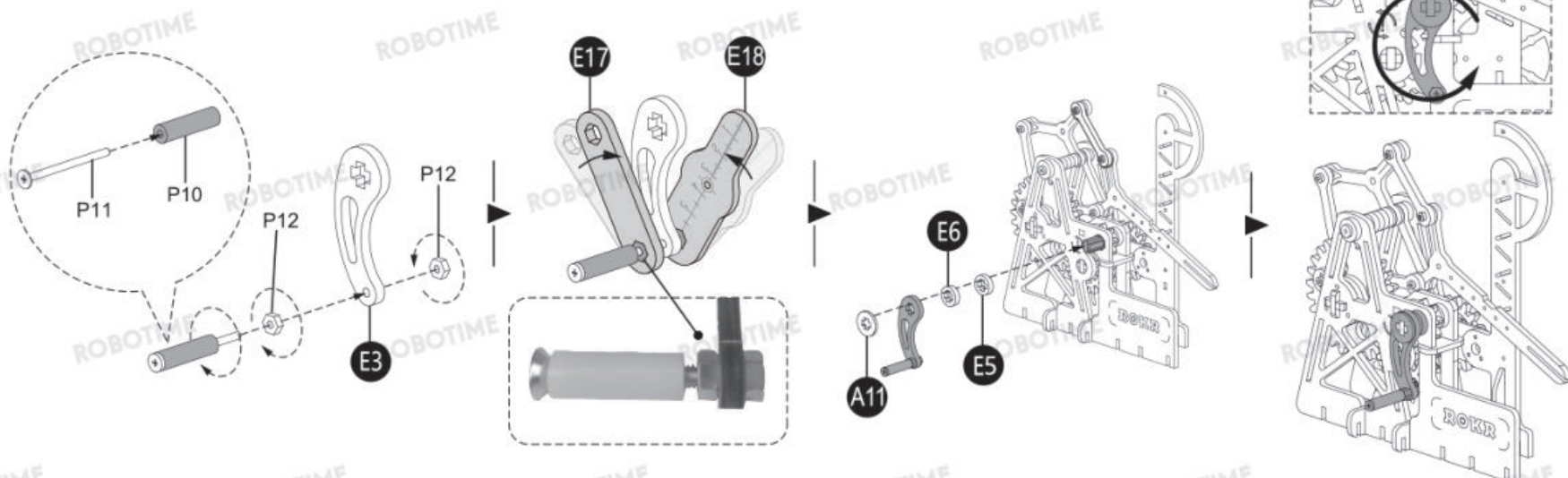
E17

E18

P10

P11

P12x2

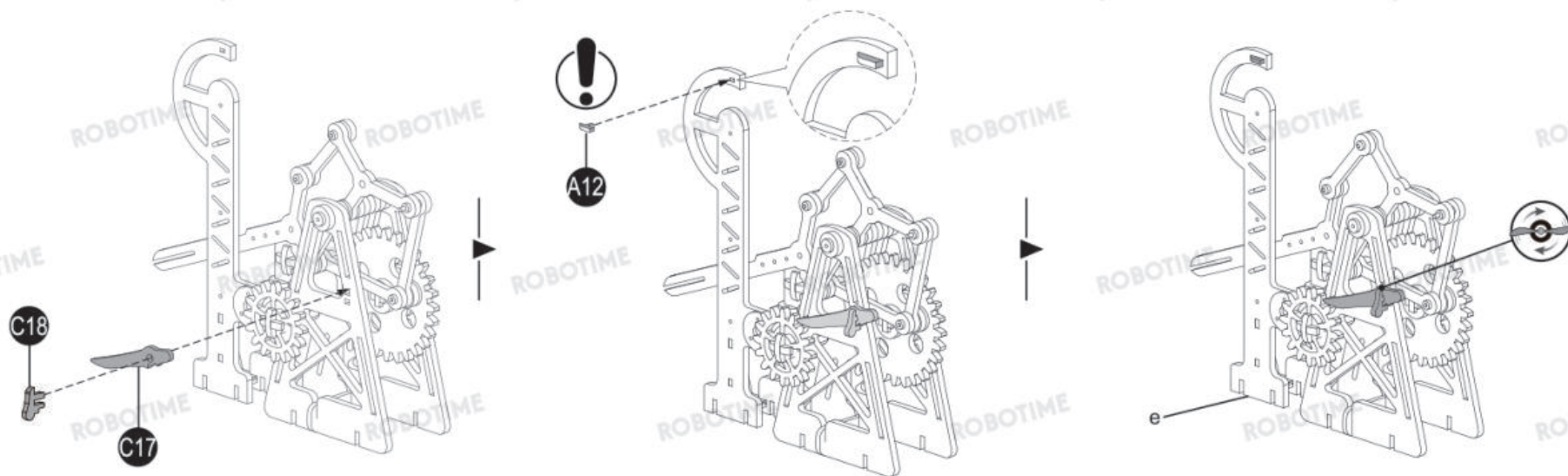


22

A12

C17

C18



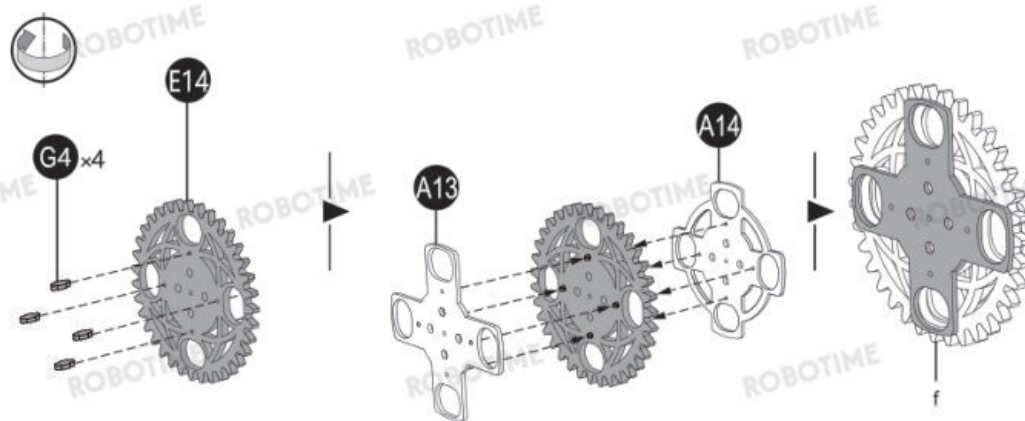
23

A13

A14

E14

G4 x4



24

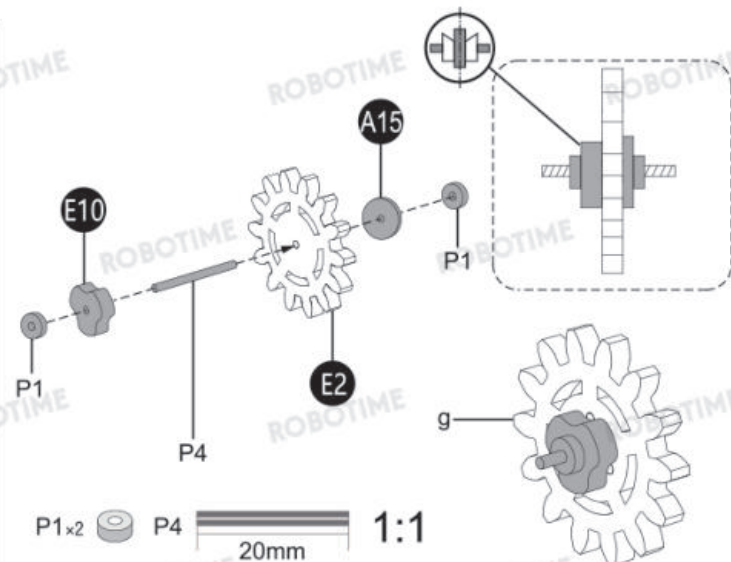
A15

E2

E10

P1 x2

P4



25

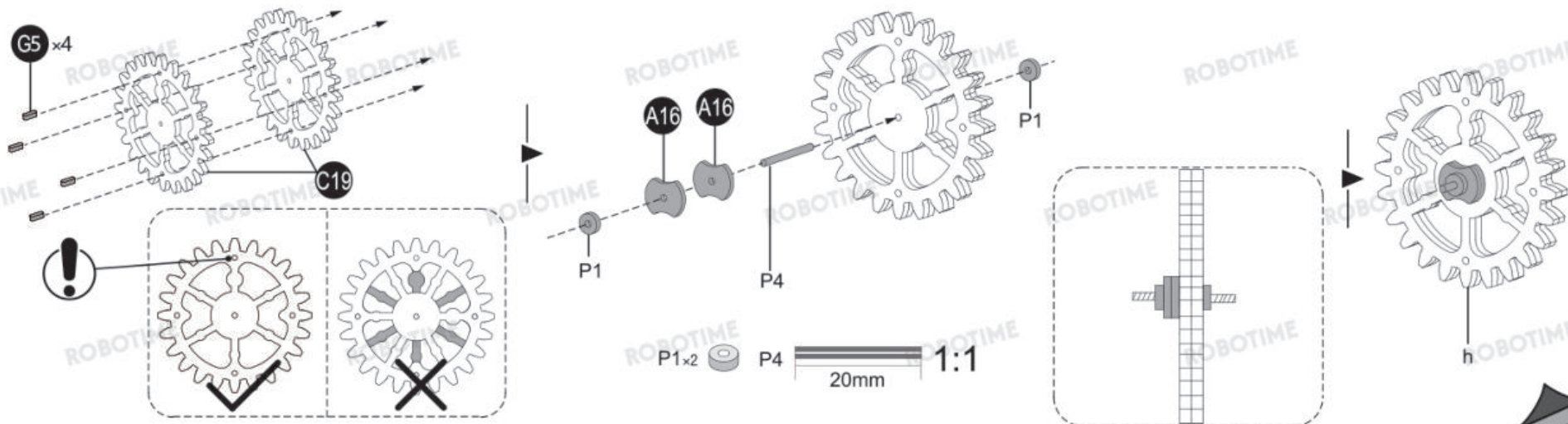
A16 x2

C19 x2

G5 x4

P1 x2

P4



P1×2

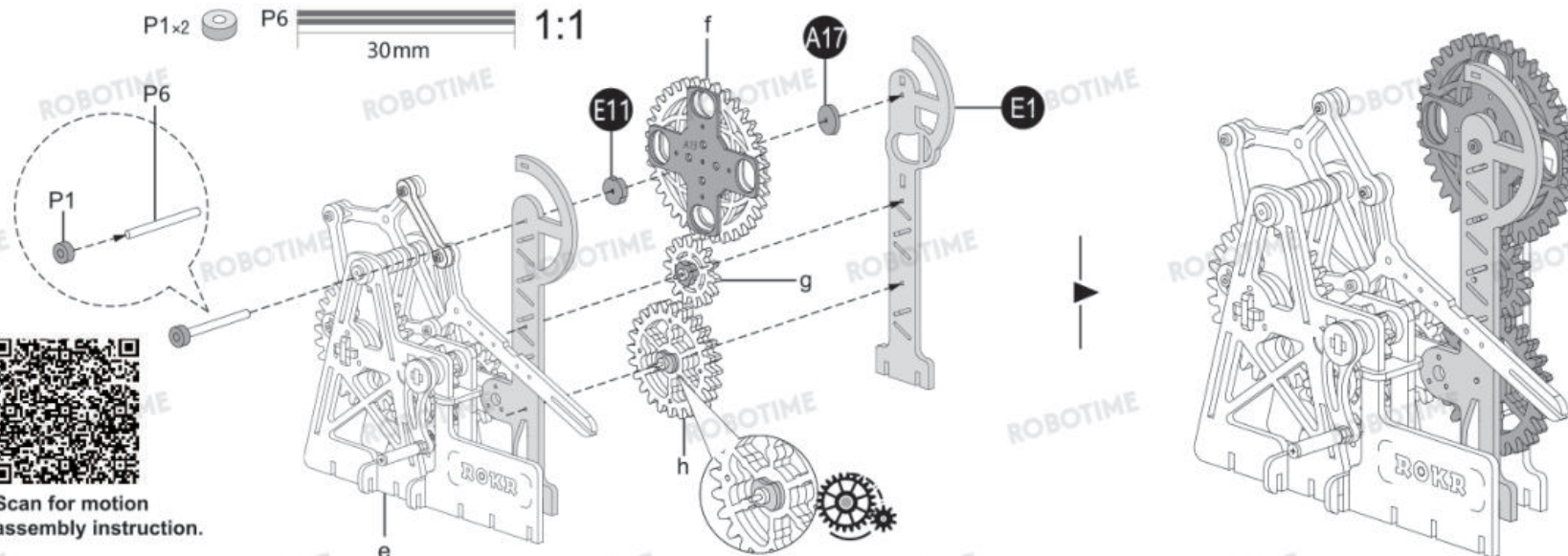
P6

30mm

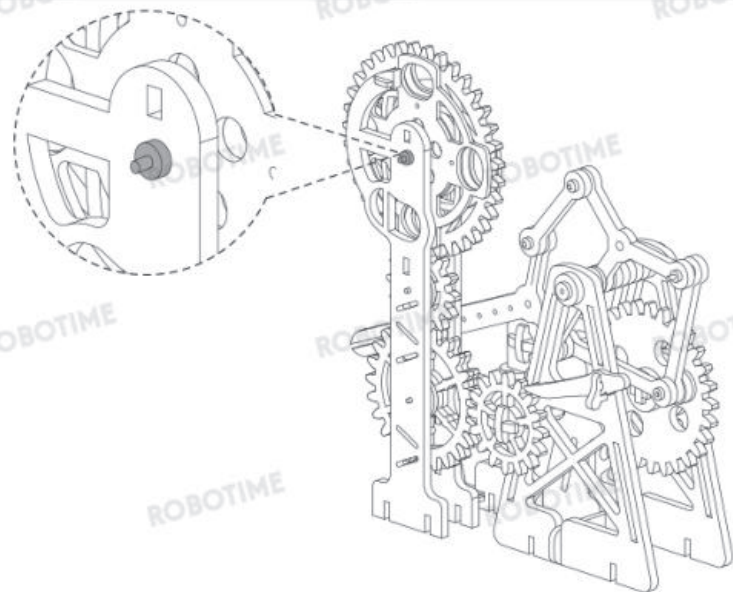
1:1



Scan for motion
assembly instruction.



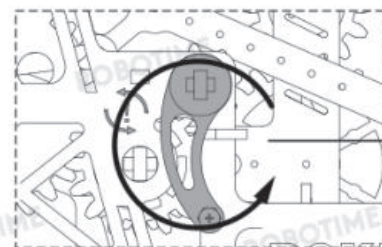
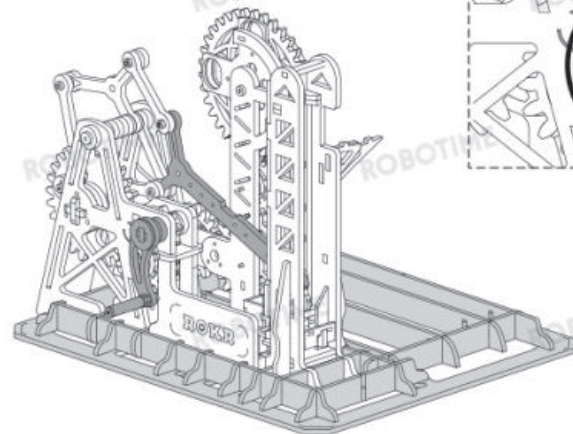
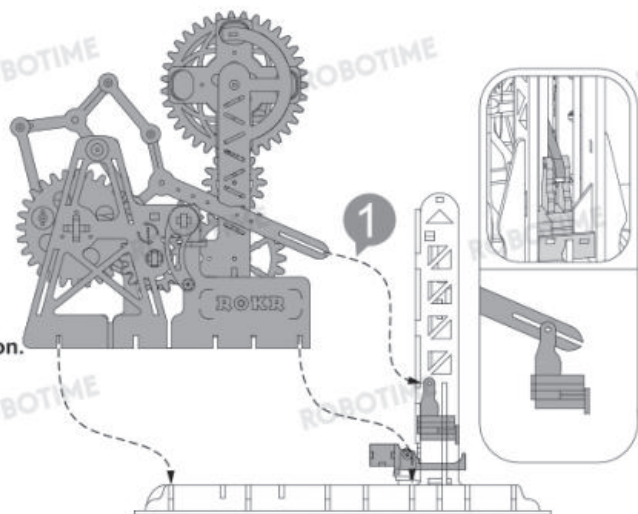
P1



27



Scan for motion
assembly instruction.



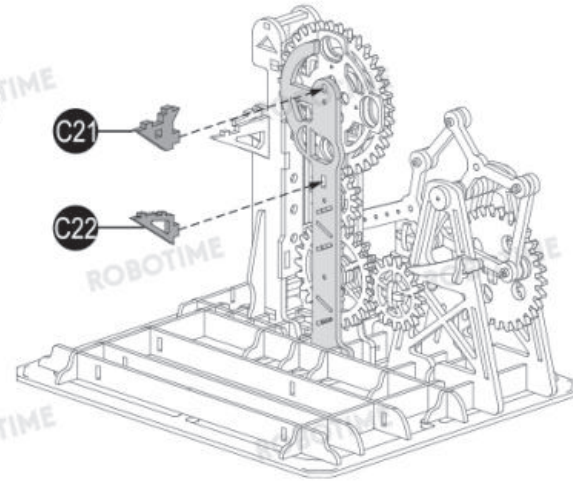
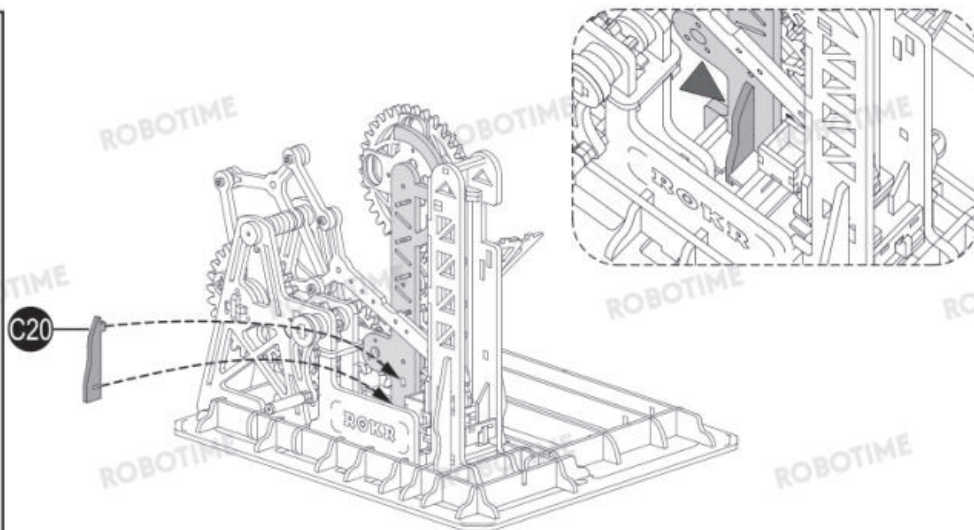
28

C20

C21

C22

C23



29

C24

C25

E8

E9

G6 x2

P1 x3

P3



Scan for motion assembly instruction.

P1 x3

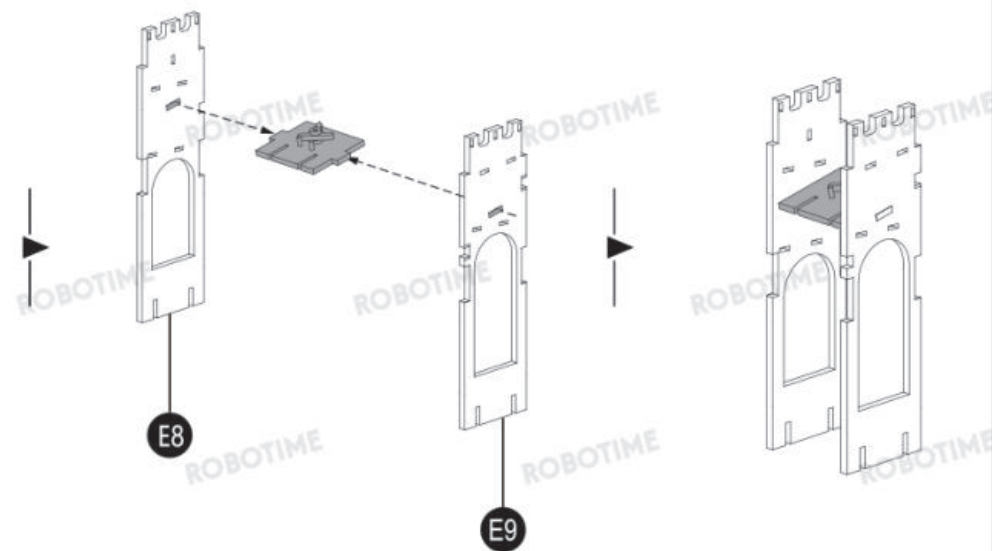
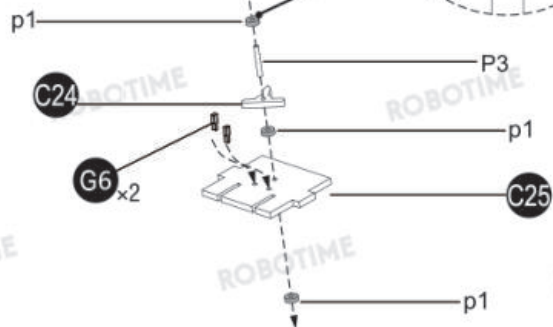


P3



1:1

15mm



30

A18

A19

A20

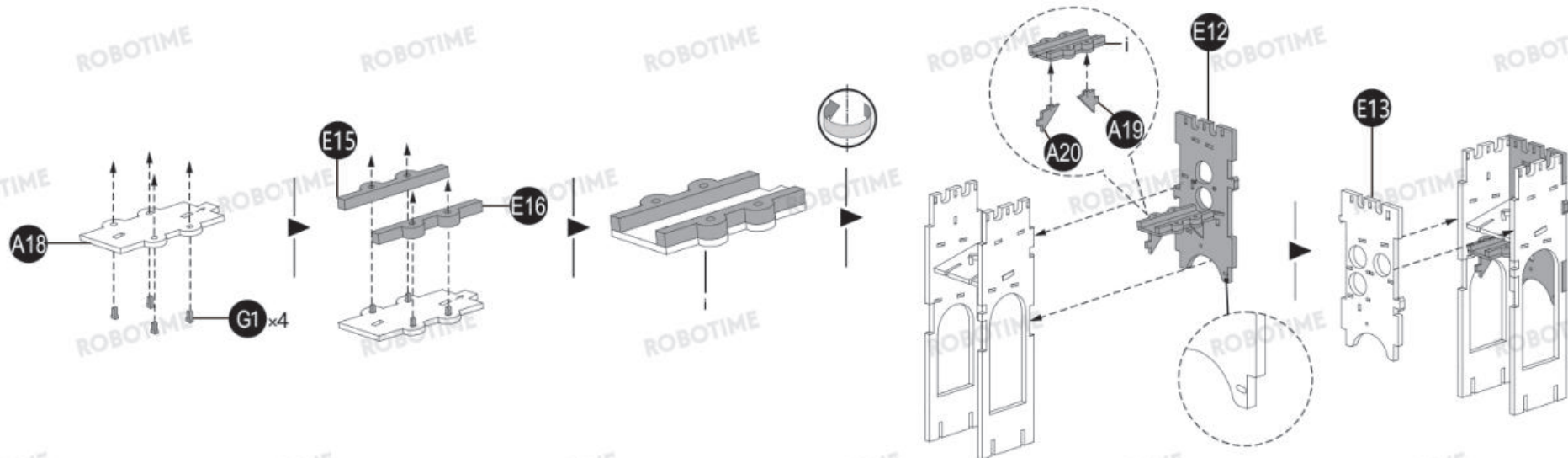
E12

E13

E15

E16

G1 x4

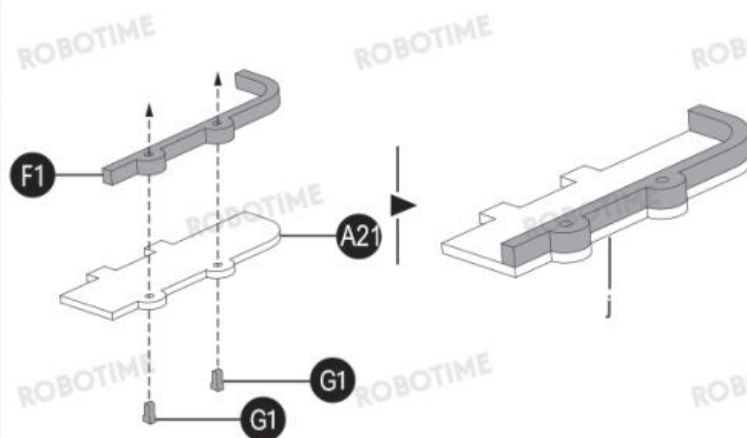


31

A21

F1

G1 x2



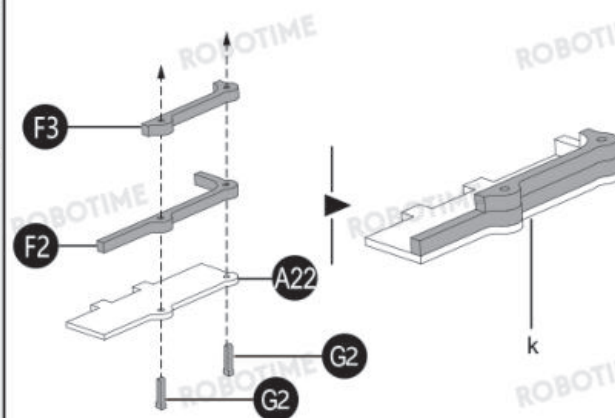
32

A22

F2

F3

G2 x2

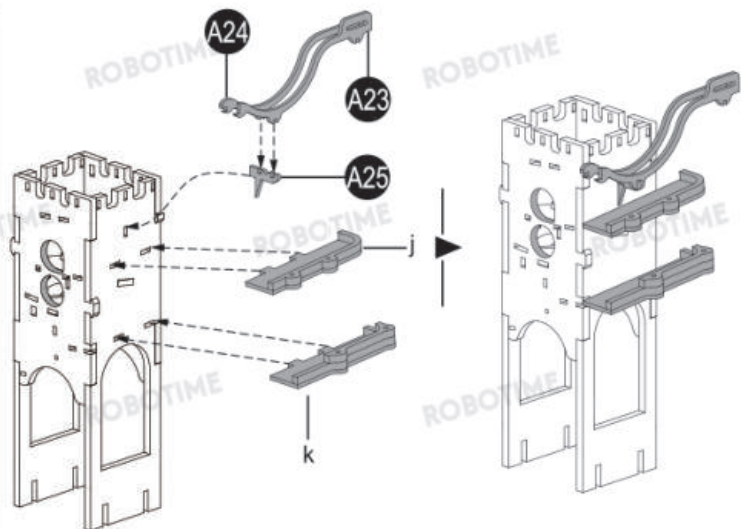


33

A23

A24

A25



34

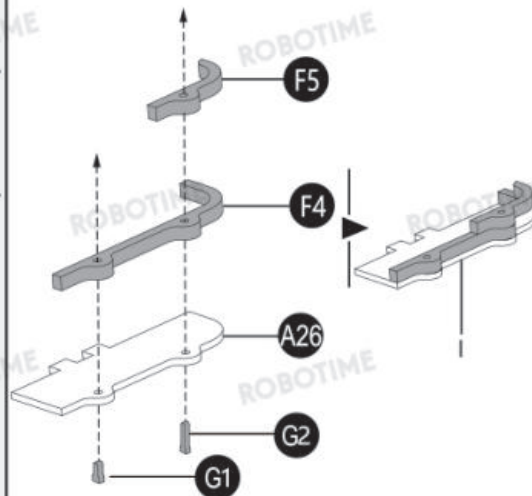
A26

F4

F5

G1

G2

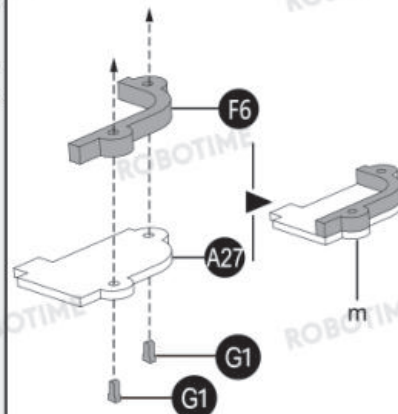


35

A27

F6

G1 x2



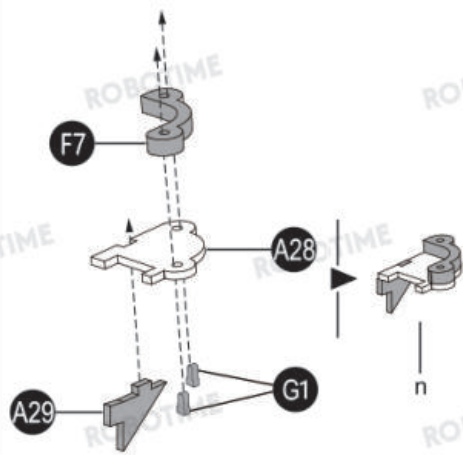
36

A28

A29

F7

G1 x2



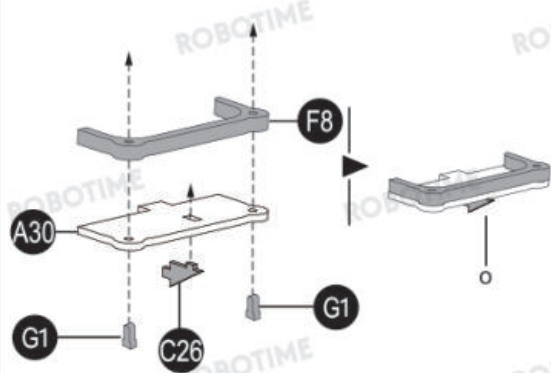
37

A30

C26

F8

G1 x2

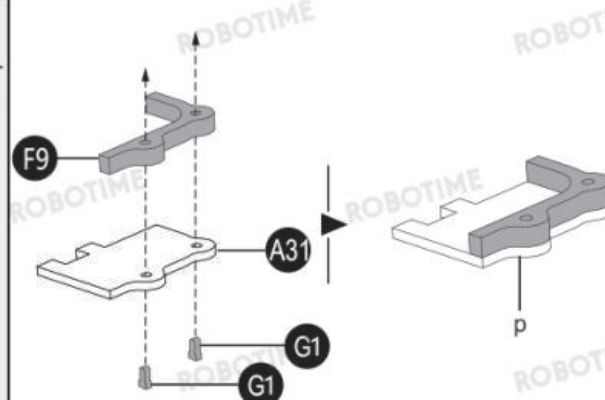


38

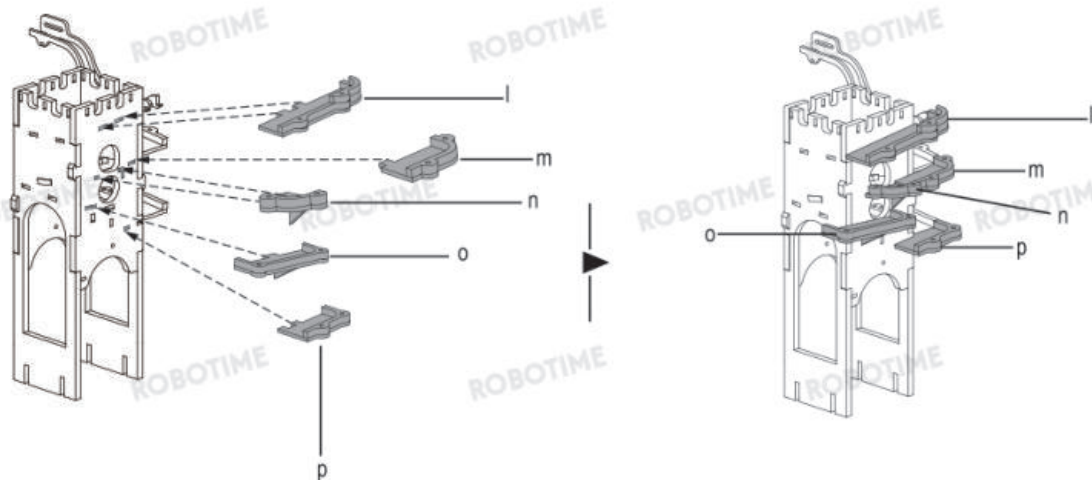
A31

F9

G1 x2



39

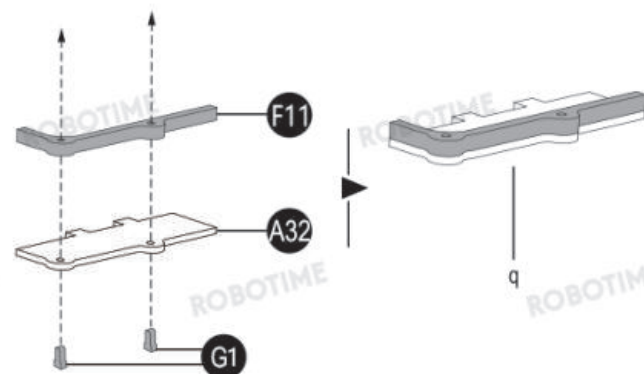


40

A32

F11

G1 x2

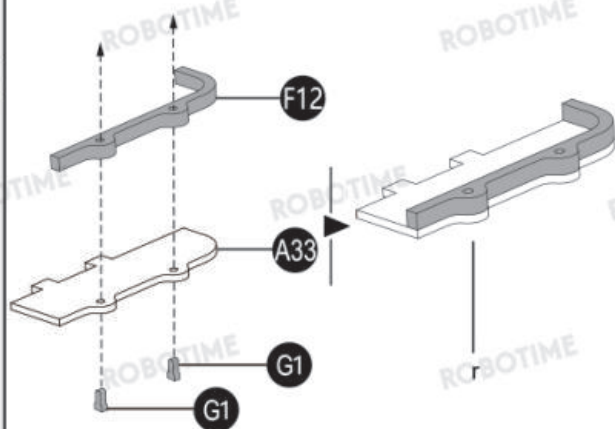


41

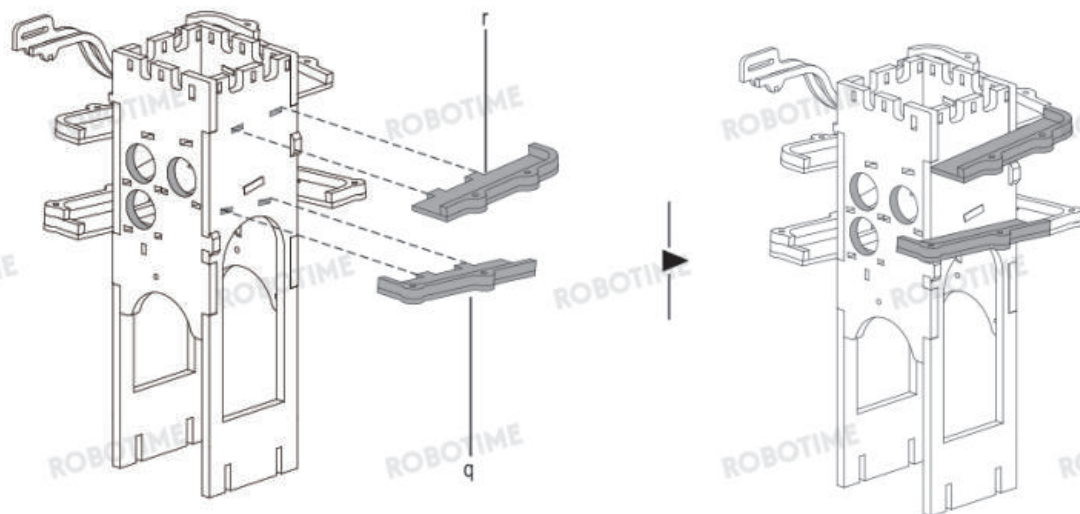
F12

A33

G1 x2



42

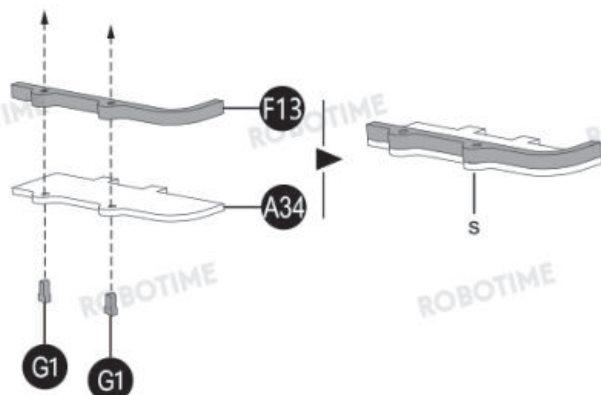


43

A34

F13

G1 x2

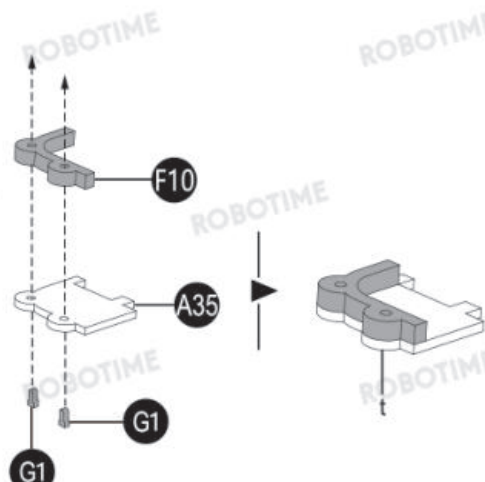


44

A35

F10

G1 x2

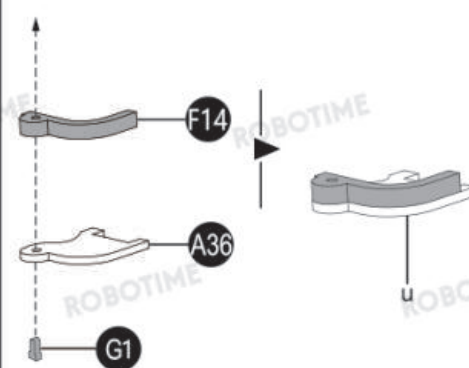


45

A36

F14

G1

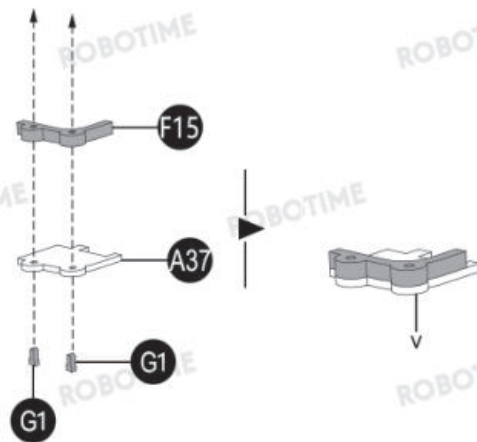


46

A37

F15

G1 x2



47

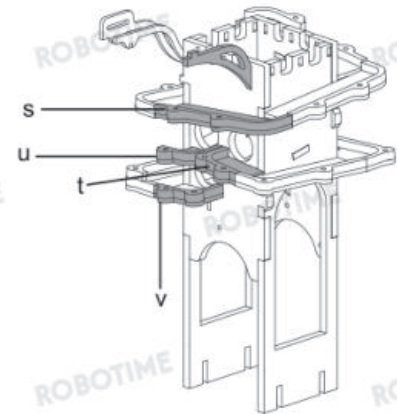
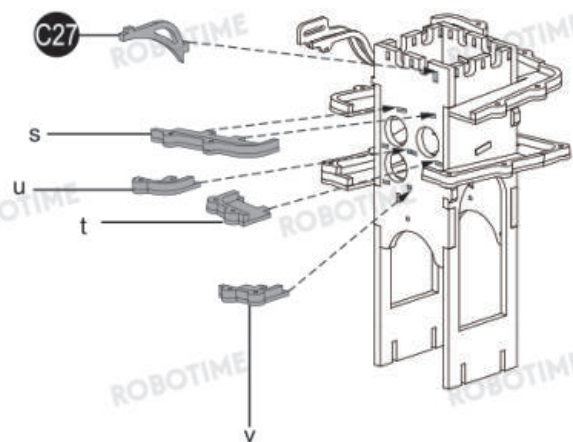
A38 x2

A39 x2

C27

P1 x2

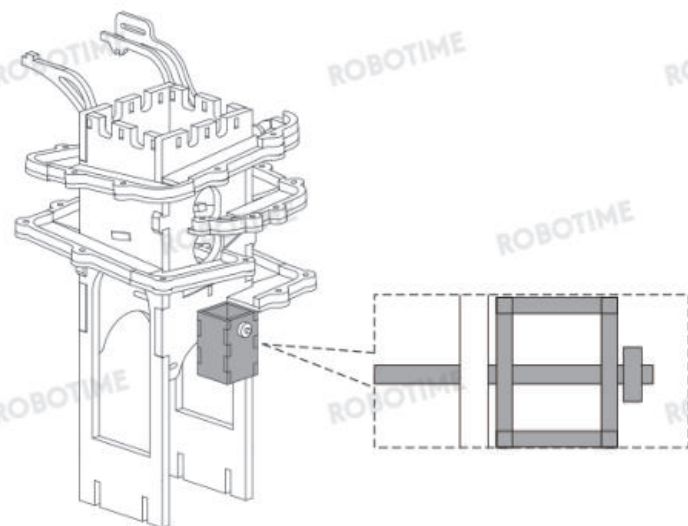
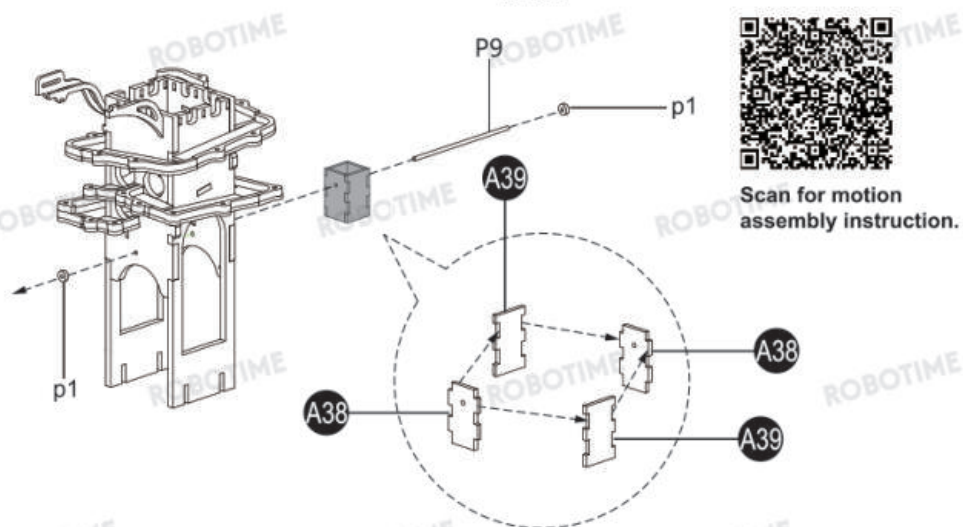
P9



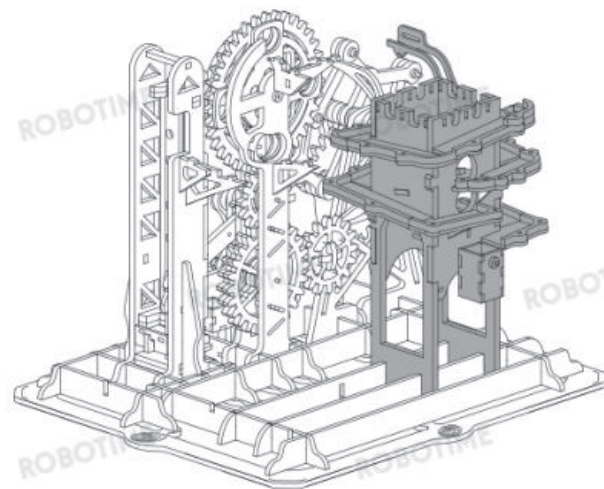
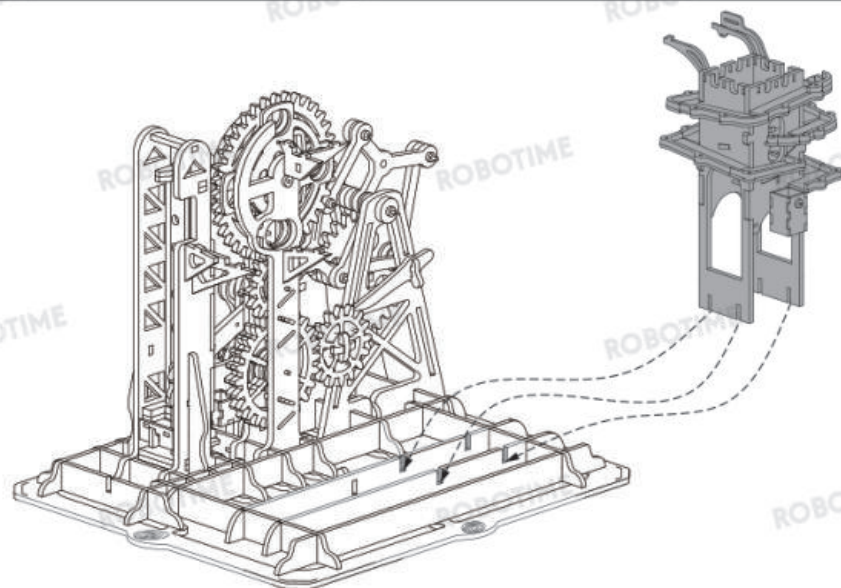
P1x2 P9

70mm

1:1



48



49

A40

C24 x3

C28 x2

C29 x3

C30 x2

C31 x2

C32

F17

G1 x2

P1 x9

P3 x3

P1 x3

C24 x3

P1 x3

A40

P1 x3

P1 x9

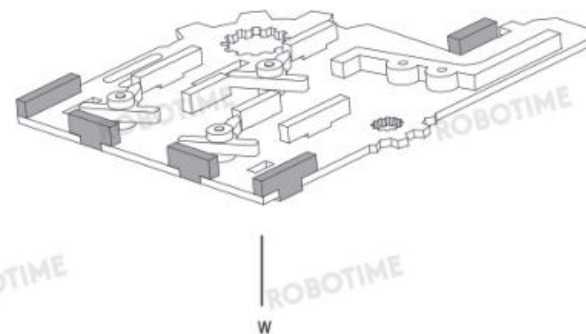
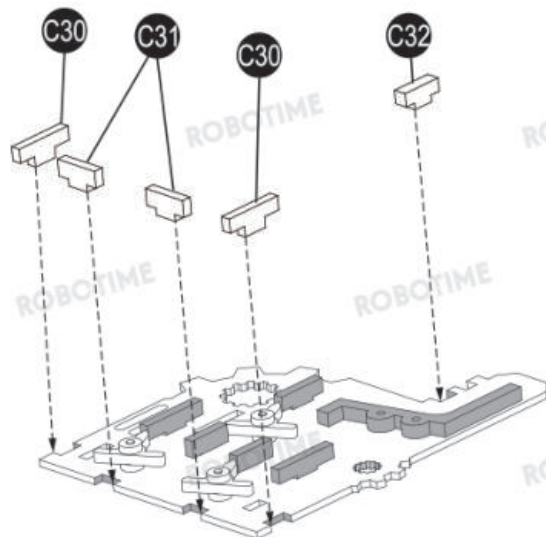
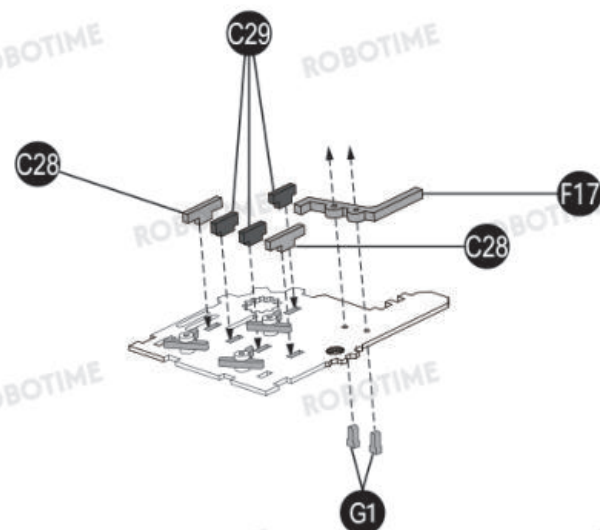
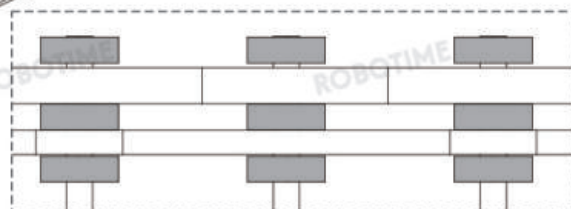
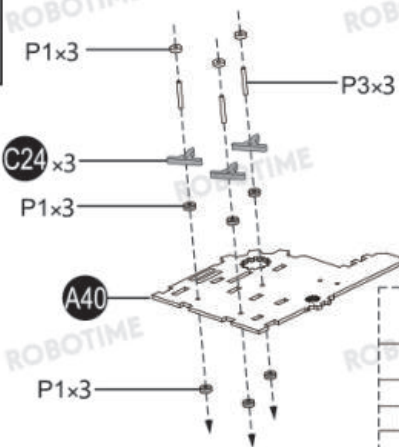
P3 x3

15mm

1:1



Scan for motion assembly instruction.



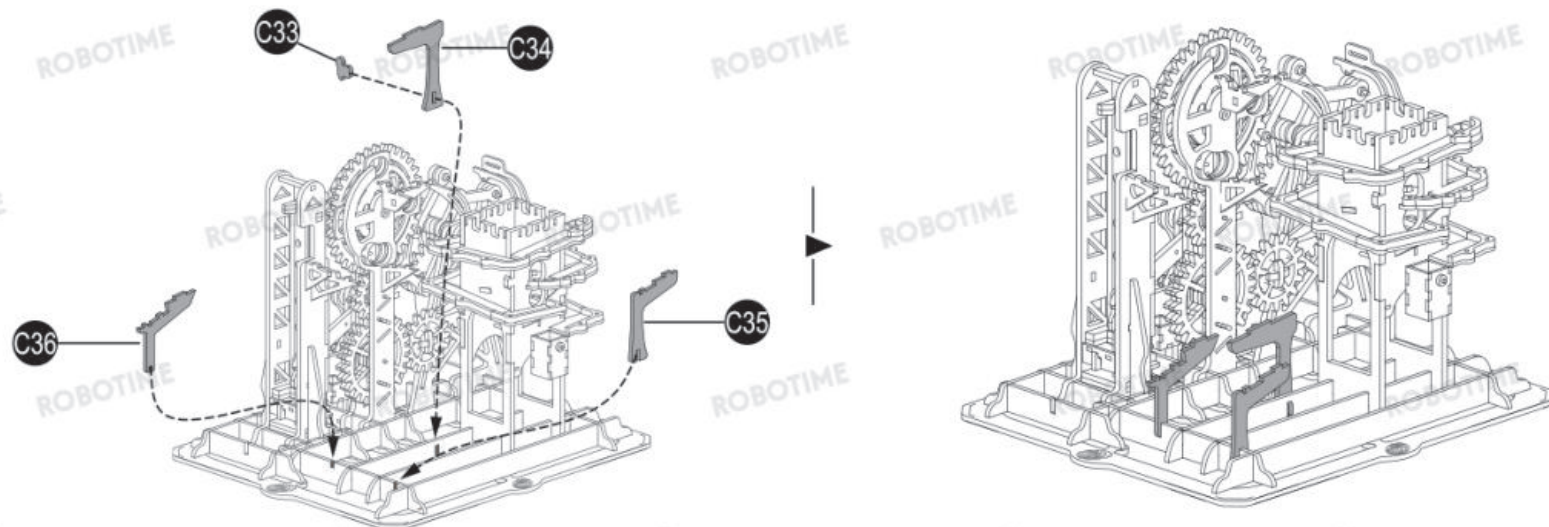
50

C33

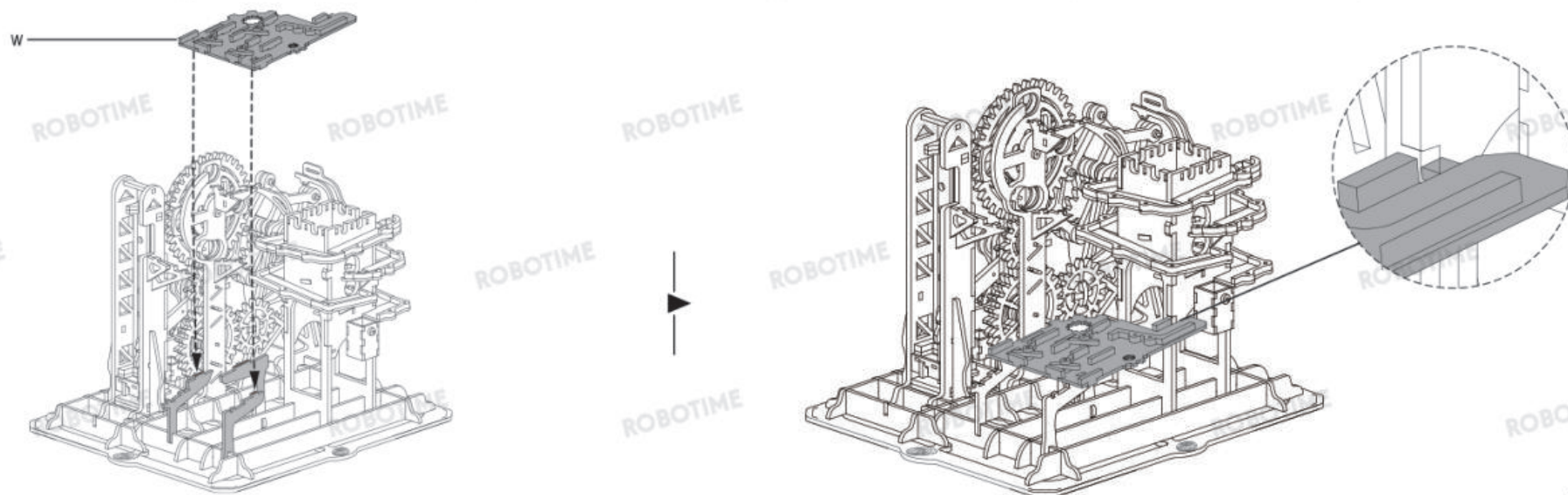
C34

C35

C36



51

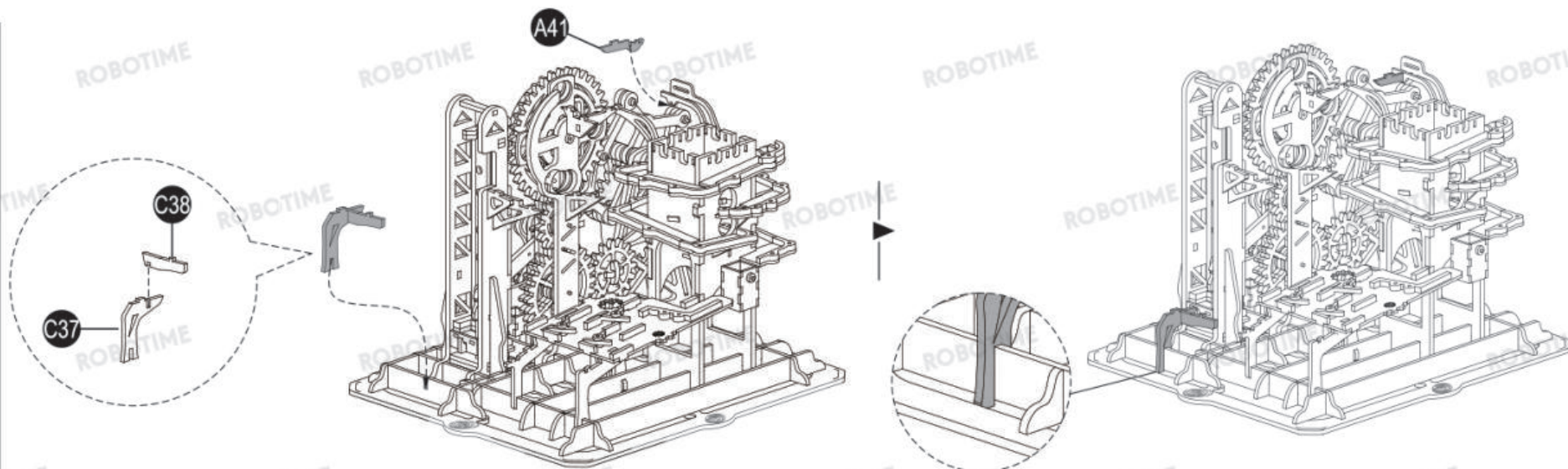


52

A41

C37

C38



53

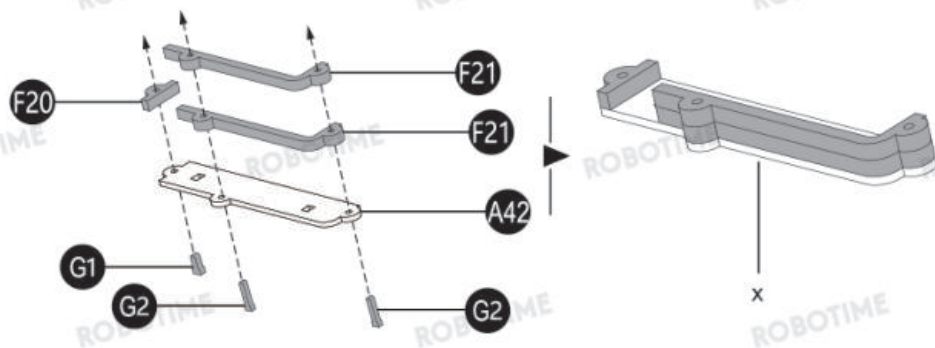
A42

F20

F21 x2

G1

G2 x2



54

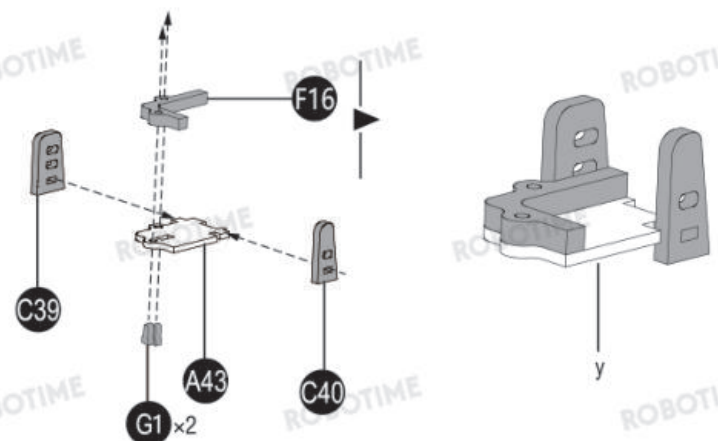
A43

C39

C40

F16

G1 x2



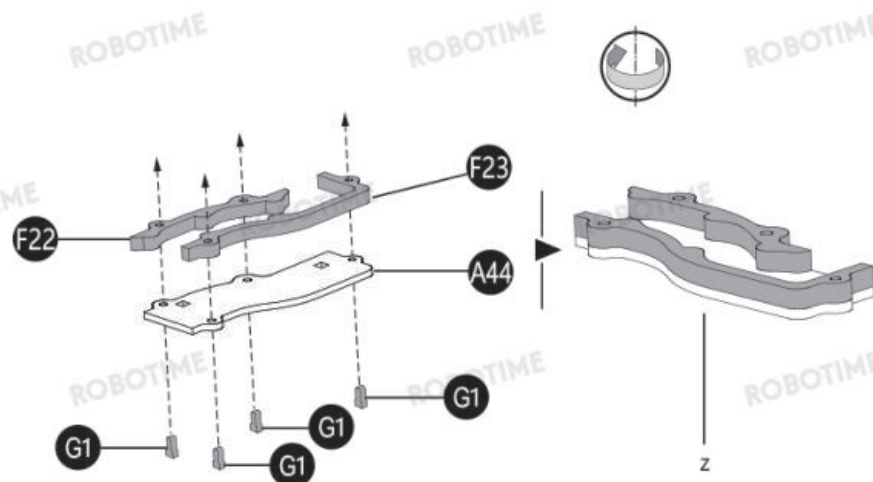
55

A44

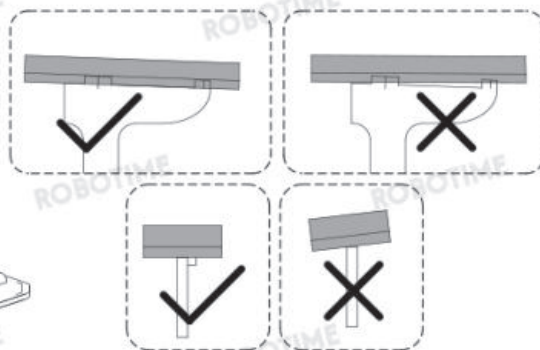
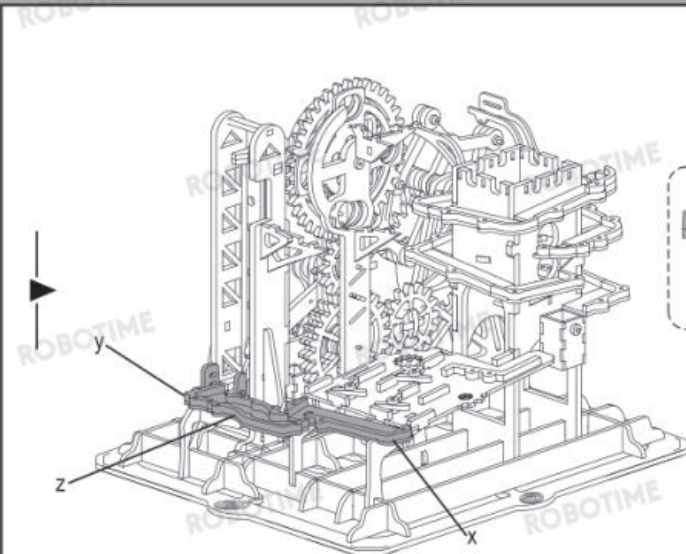
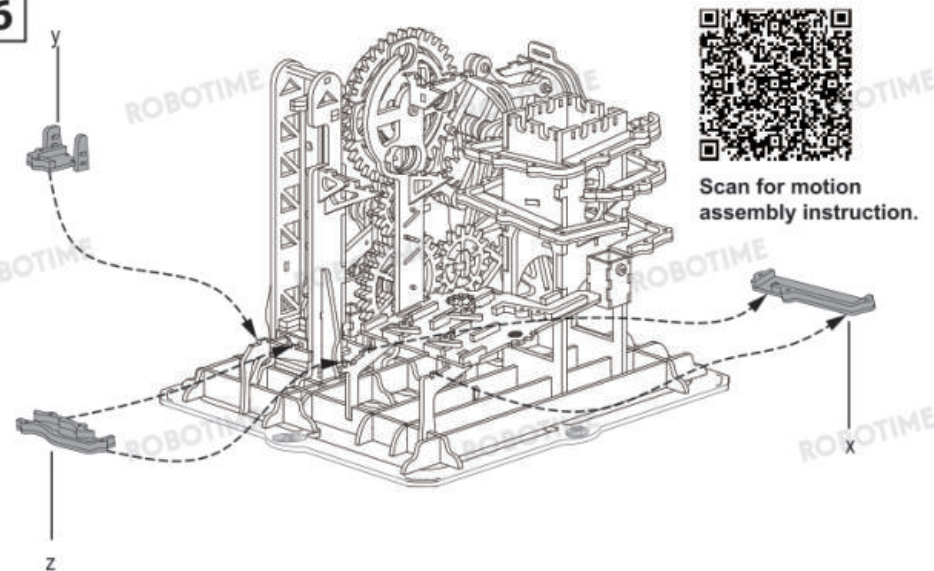
F22

F23

G1 x4



56



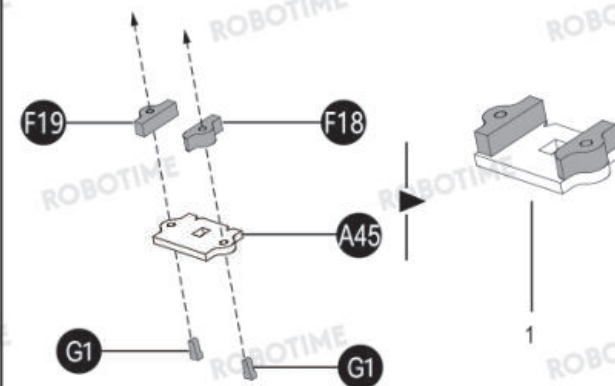
57

A45

F18

F19

G1 x2



58

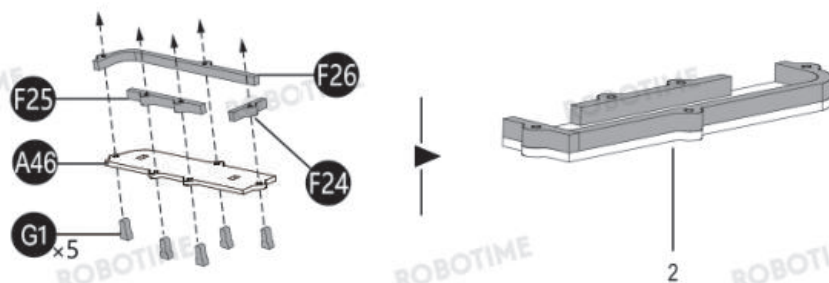
A46

F24

F25

F26

G1 x5



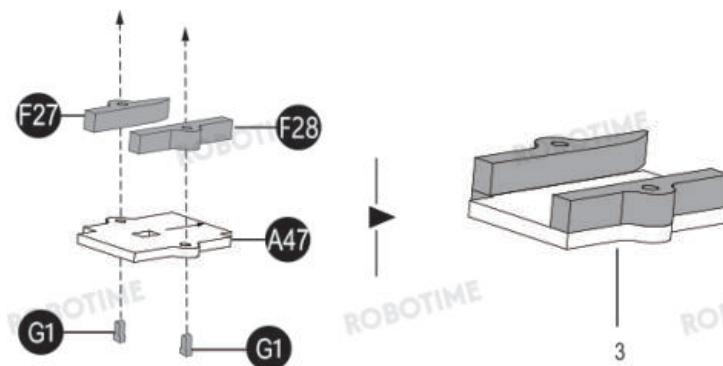
59

A47

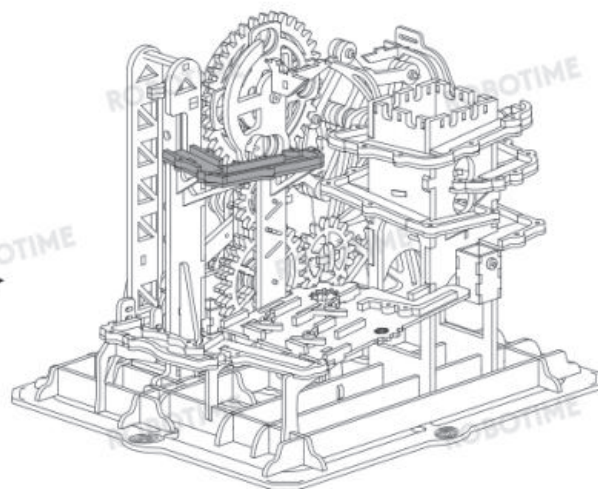
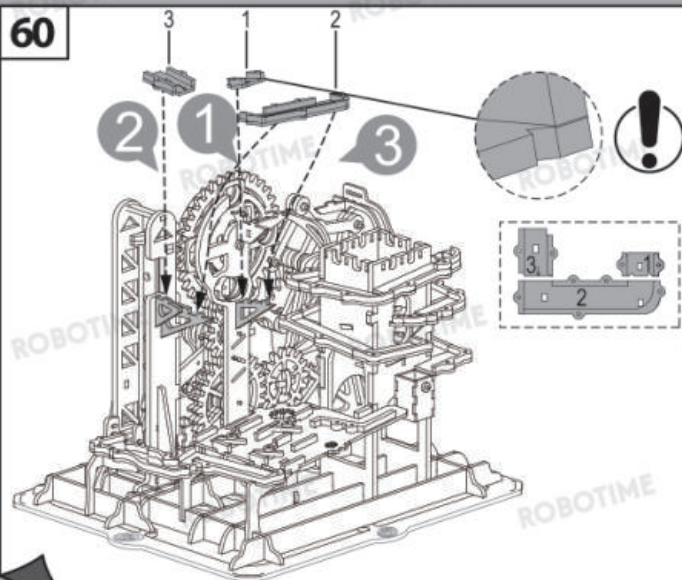
F27

F28

G1 x2



60



61

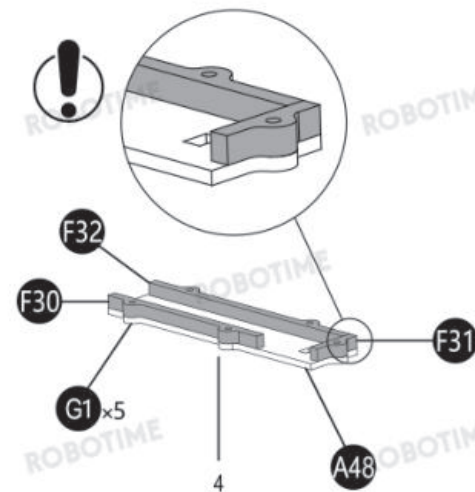
A48

F30

F31

F32

G1 x5

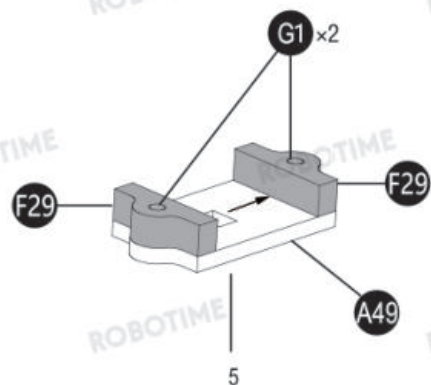


62

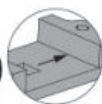
A49

F29x2

G1x2



63

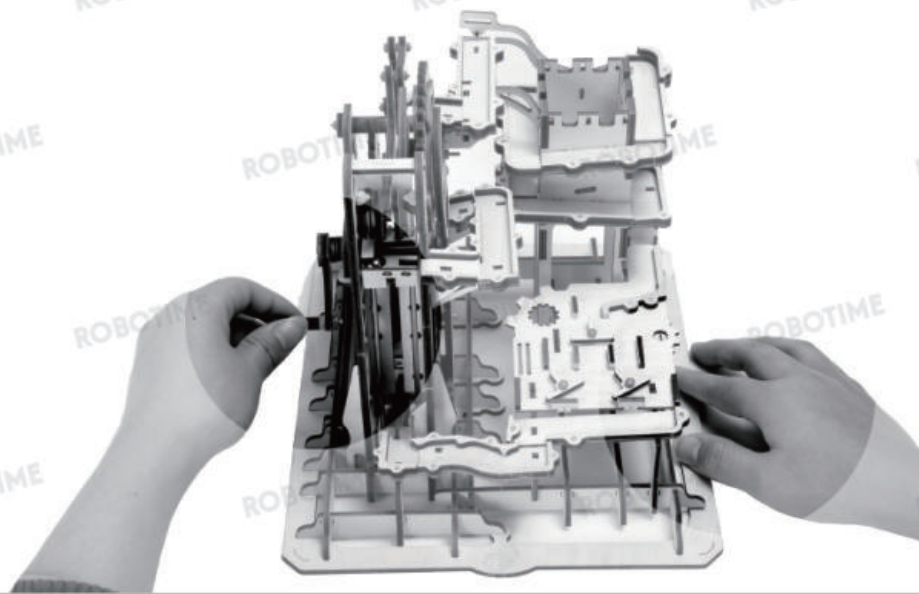
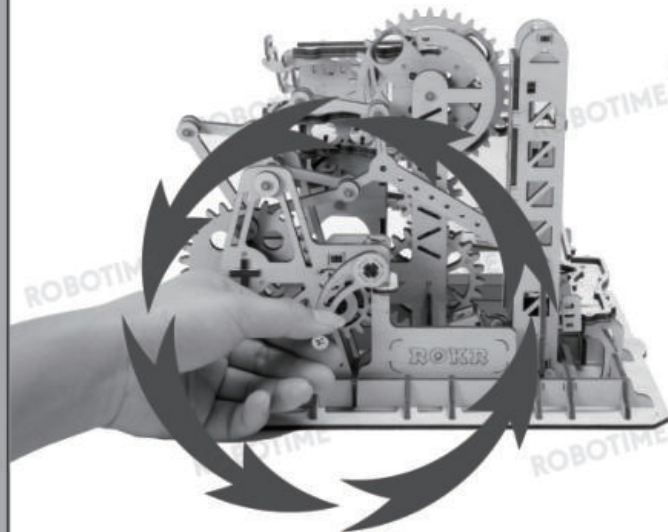
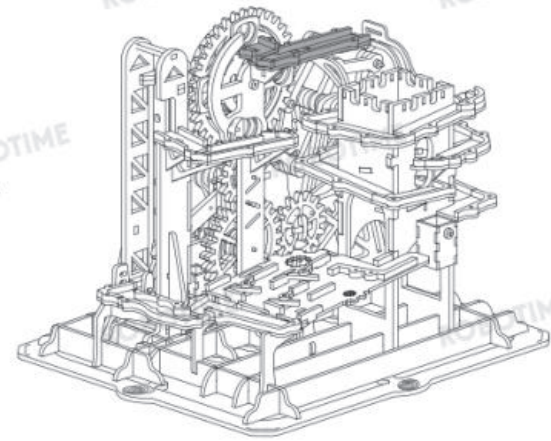
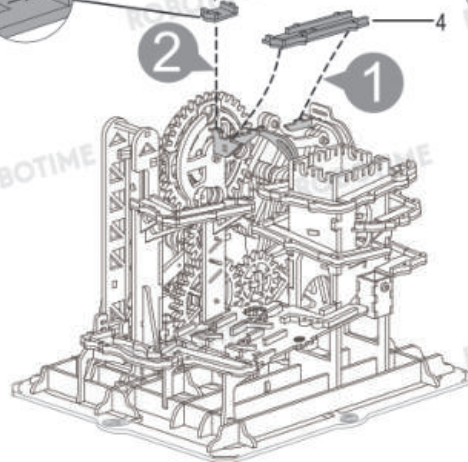
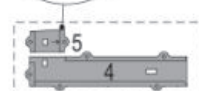


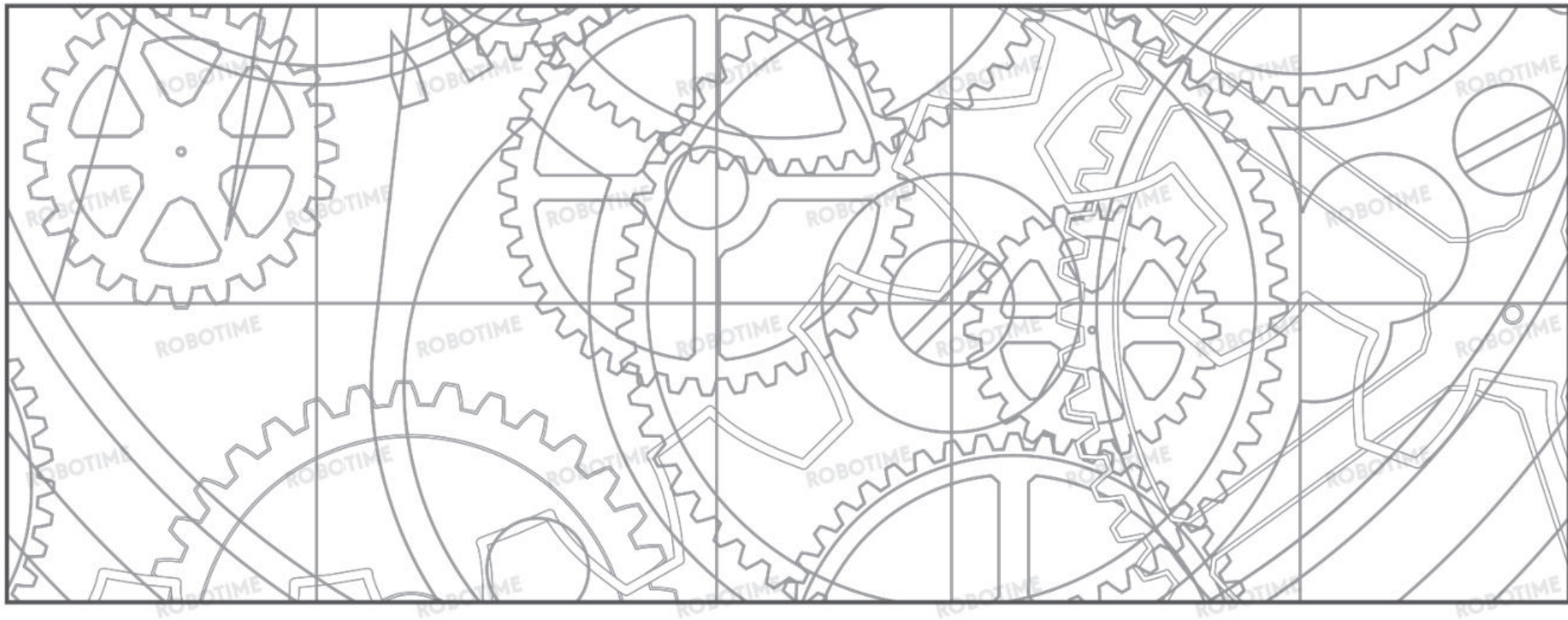
2

5



1





Find us on Facebook & Youtube.
Visit www.robotime.com for more new designs.