



LQ502 / 113 PCS

WARNING:

1. The product is for who are over 14 years old. Kids should assemble under the guidance of adults.
2. Do not aim at eyes or face.
3. Do not use the launcher to load objects with sharp edges or tips such as pencils, blades and nails.
4. The instruction must be retained since it contains important information.

MAINTENANCE:

1. Keep the product away from the source of ignition and water to prevent any damage.
2. Please don't clean this product with chemical cleaners: alcohol, ammonia water, glass cleaner, etc.
3. Please clean the product with clean soft cloth, and sand the board burr lightly with sandpaper.

Due to customs policy in international shipping, the wax may not be included. Please prepare them yourself.



ROKR Facebook



www.robotime.com

Email: service@robotime.com

Part List										
Bag No.1										
Item number	Steel shaft	Steel shaft	Screw	Rivet	Rivet	Spring	Spring	Silver Spring	Black Spring	Slotted screwdriver
	P1	P2	P3	P4	P5	P6	P7	P8	P9	P10
Illustration										
Quantity	1	1	9	9	7	1	1	2	2	1
Bag No.2										
Rubber band	Shaft sleeve	Wax	Bag No.3			Board No.F				
P11	P12	P13	Screw	Warning sign	Pendulum shaft	Percussion hammer	Trigger shaft	Tool ①	Pendulum Cover	Rubber band chuck
			P14	P15	F1	F2	F3	F4	F5	F6
100	6	1	1	1	1	1	1	1	1	1

Wax colored areas as shown

Printed side

Step 1

Special attention in assembly

Blank side

Step 2

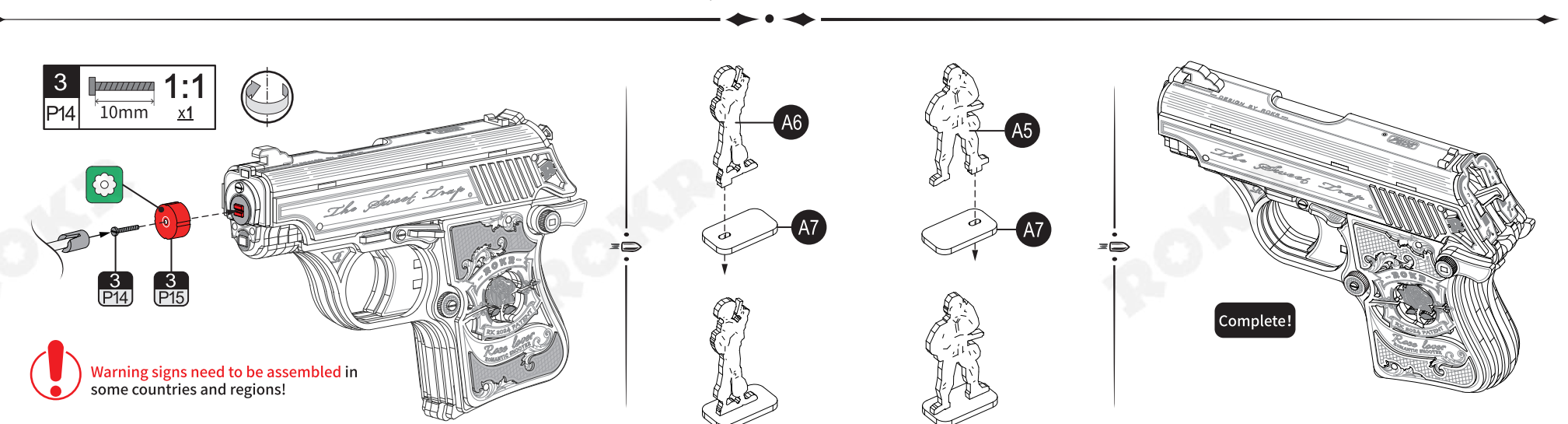
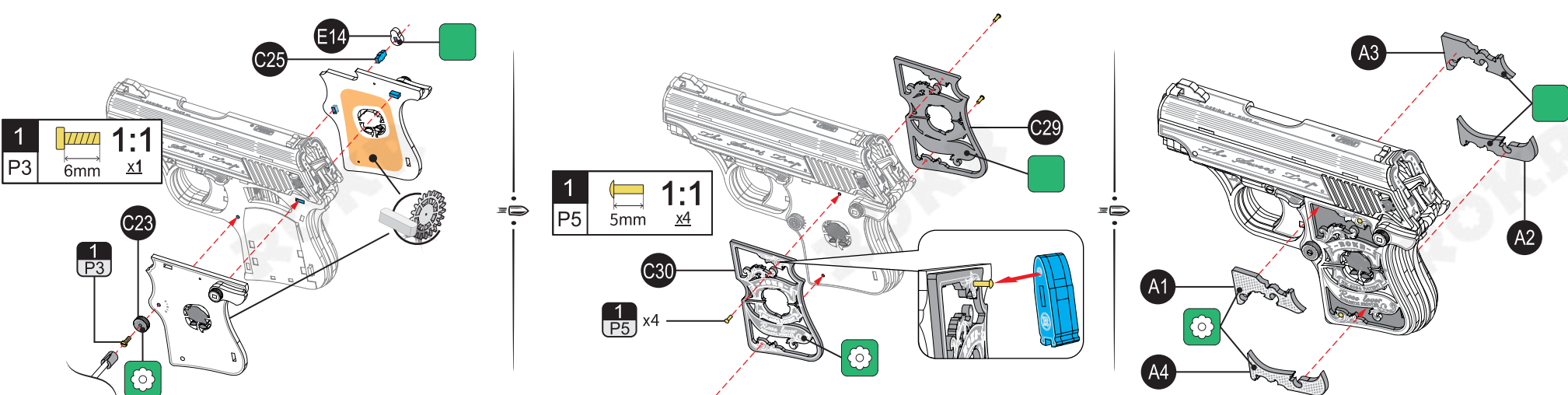
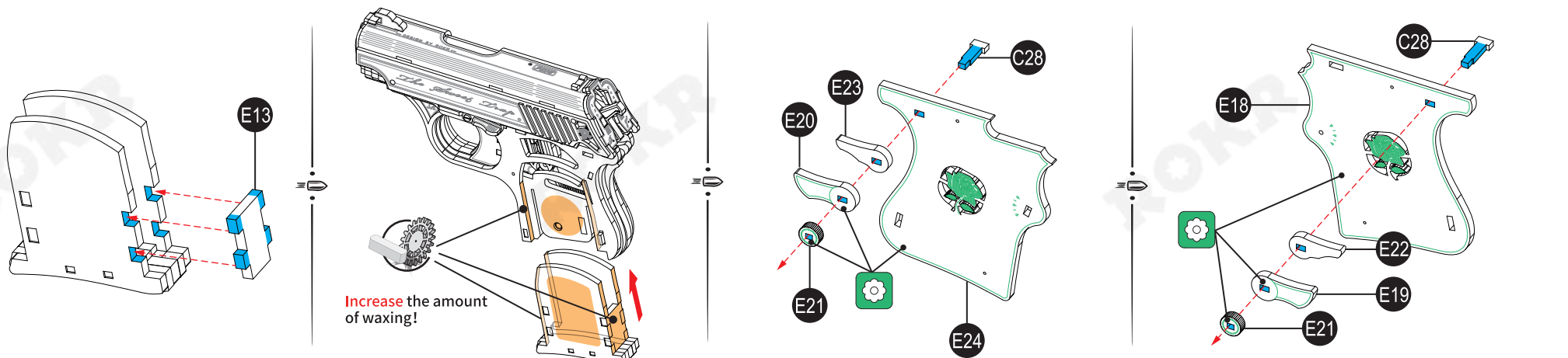
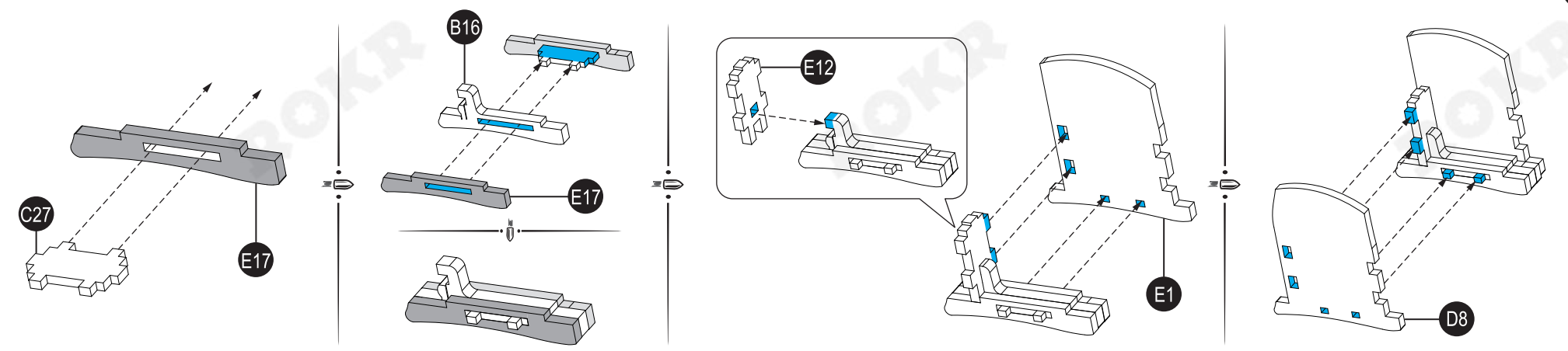
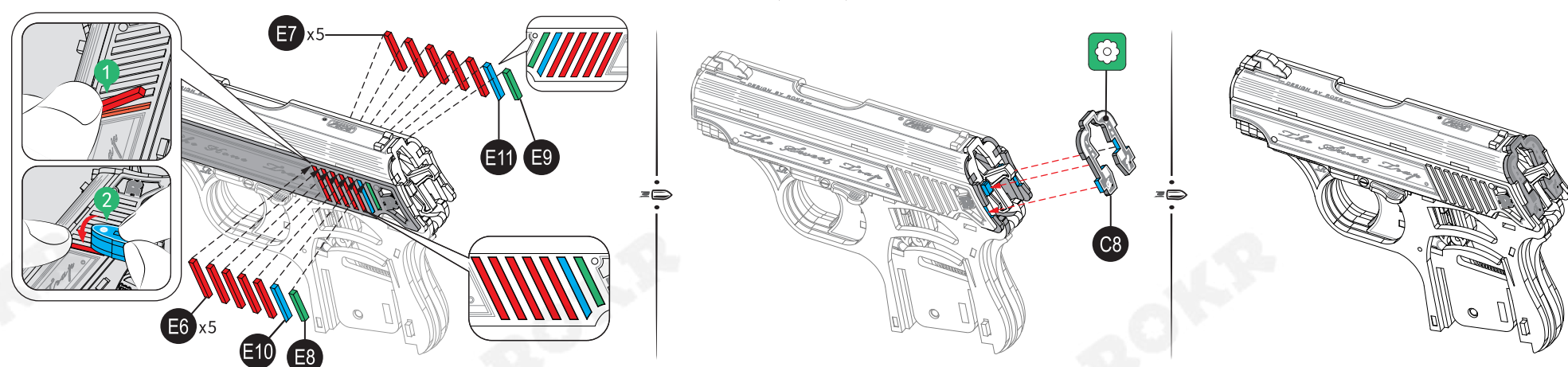
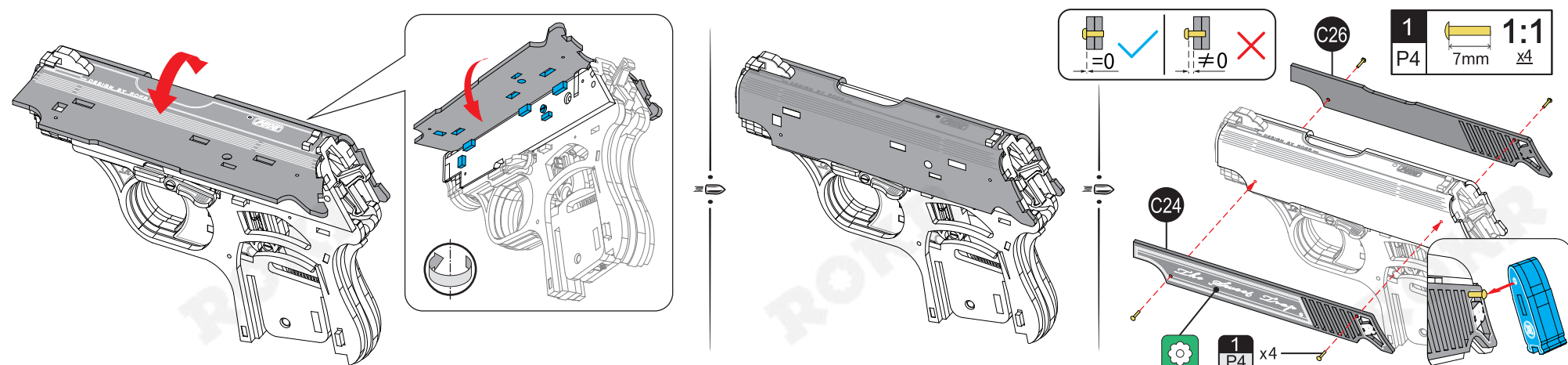
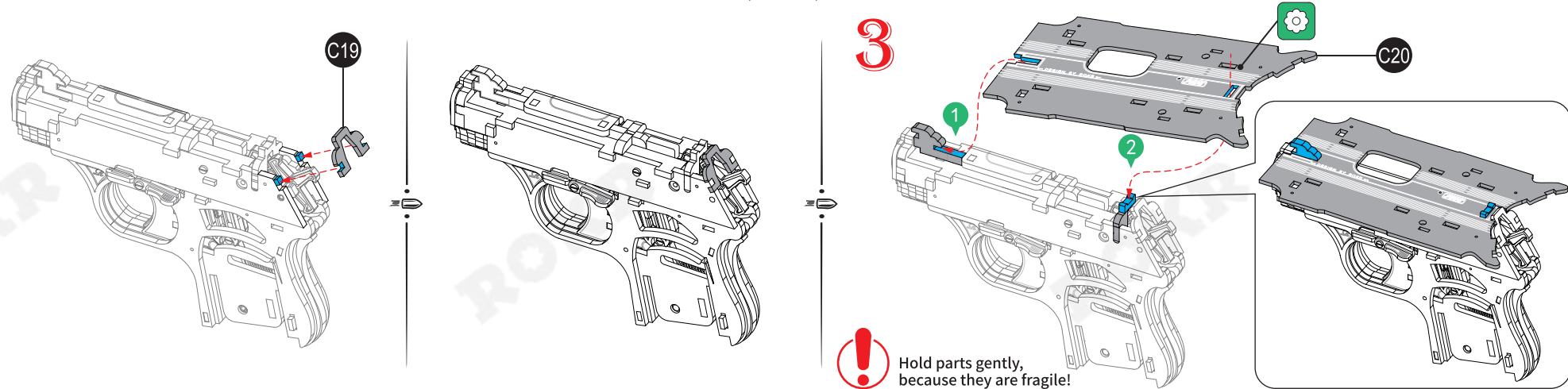
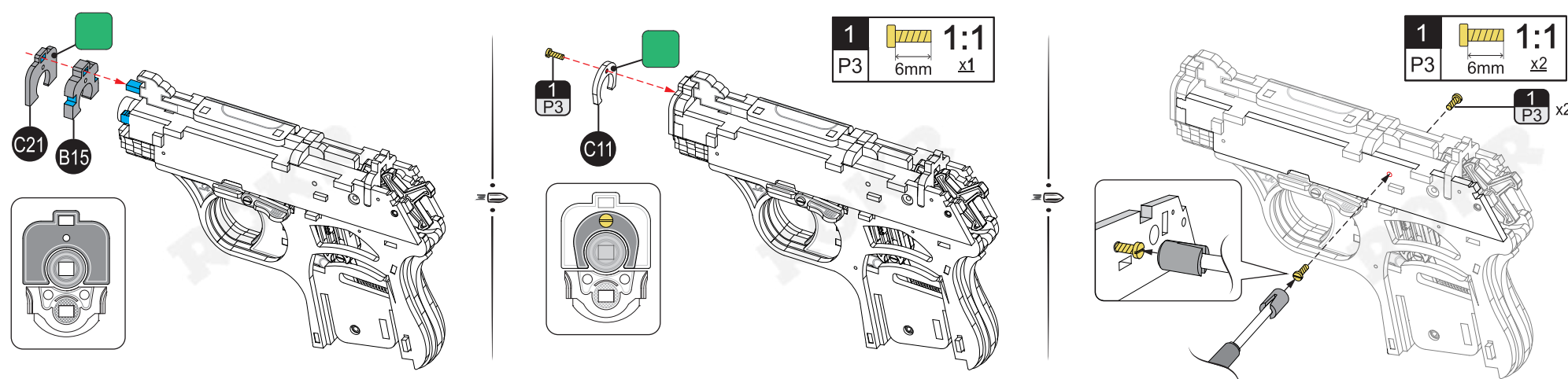
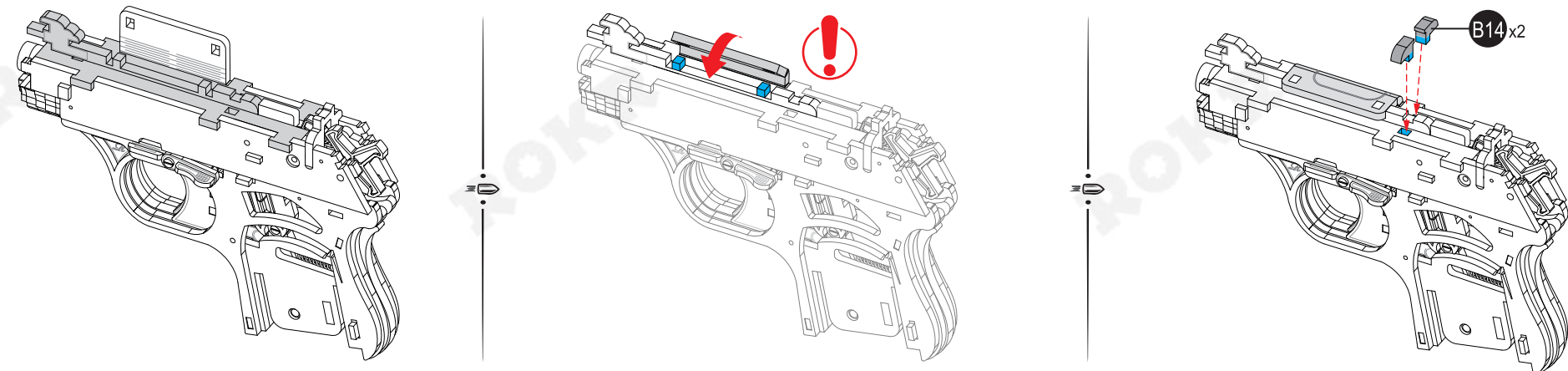
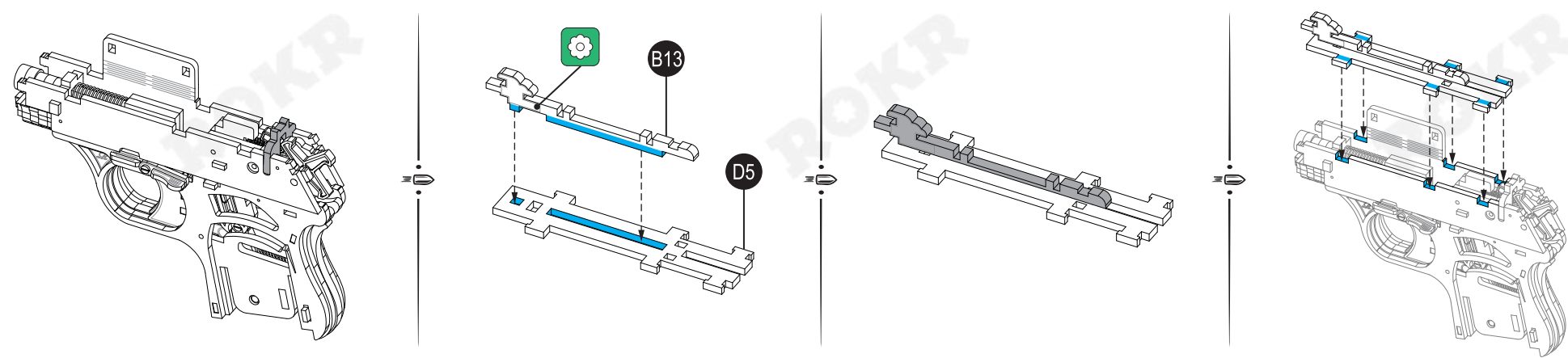
Flush end assembly

Complete 2 same parts

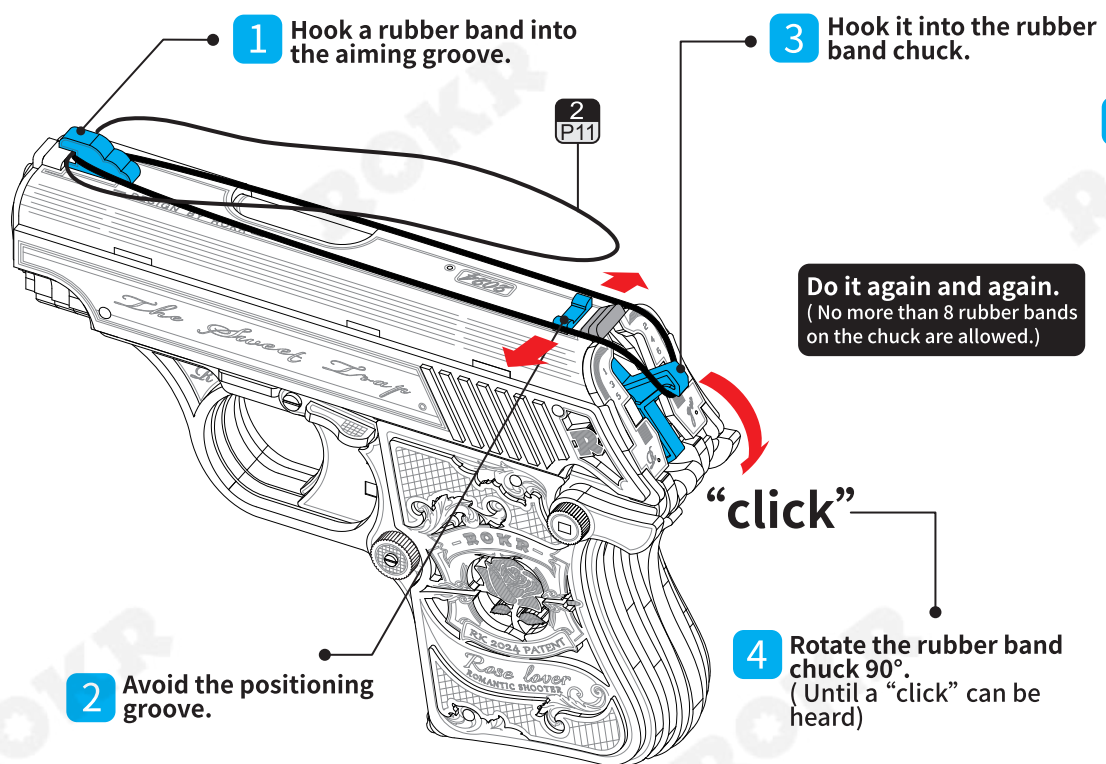
Perspective changed

Instructions of item number

U9+ U9 has spare parts
Part P20 in Bag No. 3



Instructions:



5 Pull the trigger and shoot!
Notice: Pull the trigger to the end and shoot!

Do it again and again.
(No more than 8 rubber bands on the chuck are allowed.)

FAQs:

Q1: Stuck rubber bands/ failure in shooting:
A: Probably the rubber band chuck gets stuck and does not reset in time.
Solution: Pull the upper receiver backwards manually.
Q2: Occasionally two rubber bands at once:
A: 1. The rubber band chuck has no 90° rotation when loaded with rubber bands.
2. Two rubber bands at once or more than 8 rubber bands are loaded.

