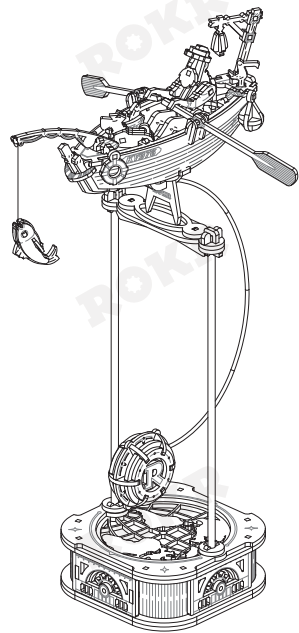


# GRAVITY SWING

OCEAN FISHER



MCD02 / 161PCS

### WARNING:

- Children should be guided by adults.
- This product contains small parts. Please use it carefully to avoid accidental ingestion and choking.
- The instruction must be retained since it contains important information.

### ATTENTION:

- Please read the instructions carefully before assembly to confirm that the parts are not damaged or missing.
- Remove the parts required by the corresponding step carefully before assembly and place them properly.
- Please don't clean this product with chemical cleaners: alcohol, ammonia water, glass cleaner, etc.
- Please clean the product with clean soft cloth, and sand the board burr lightly with sandpaper.
- Please keep the product away from substances flammable and humid environments to prevent damage.

Tel: 400-960-0062

ROKR



ROKR Facebook



www.robotime.com



Special attention in assembly



Complete 2 same parts



Printed side



Blank side



Step 1



Step 2

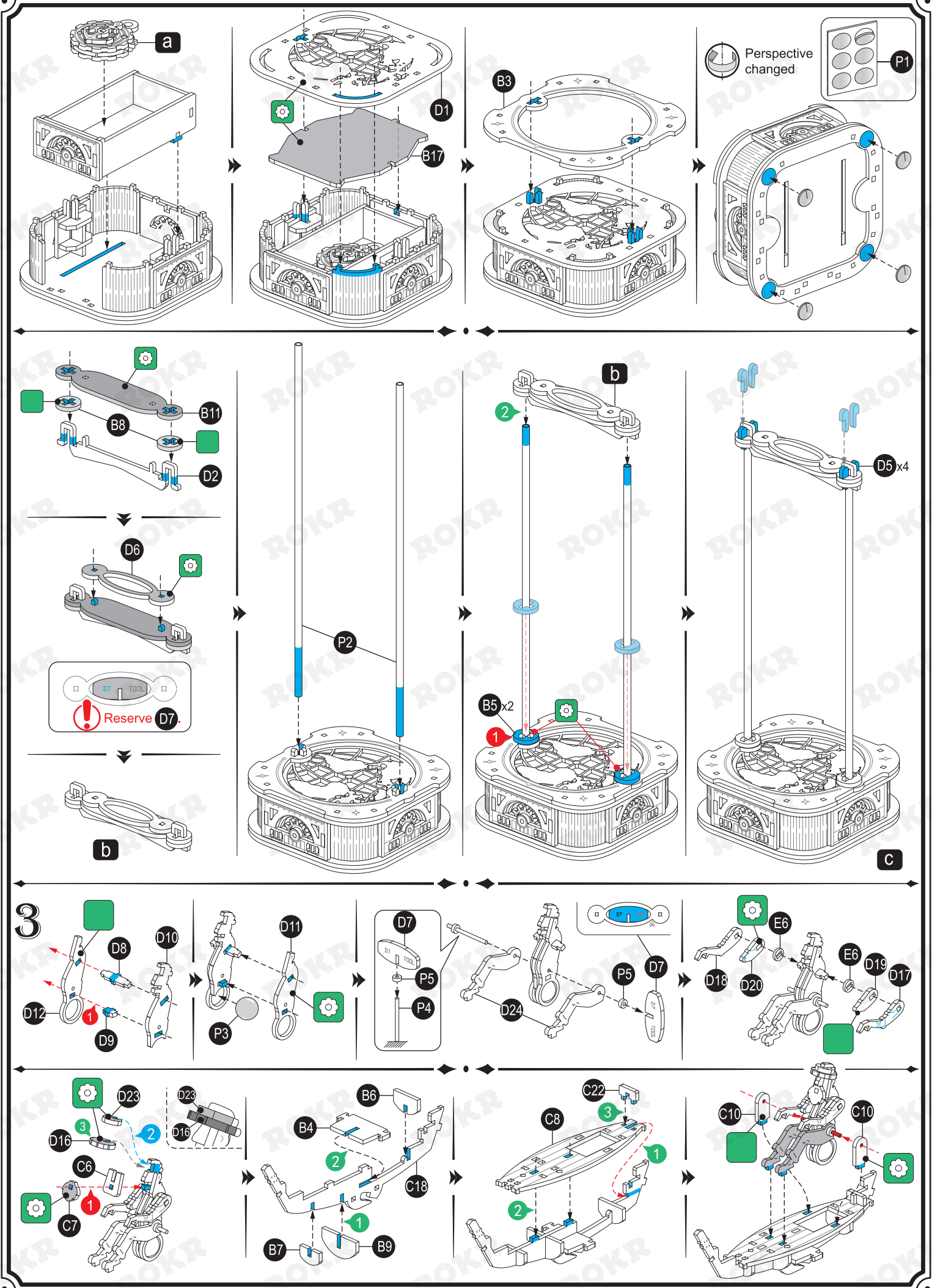
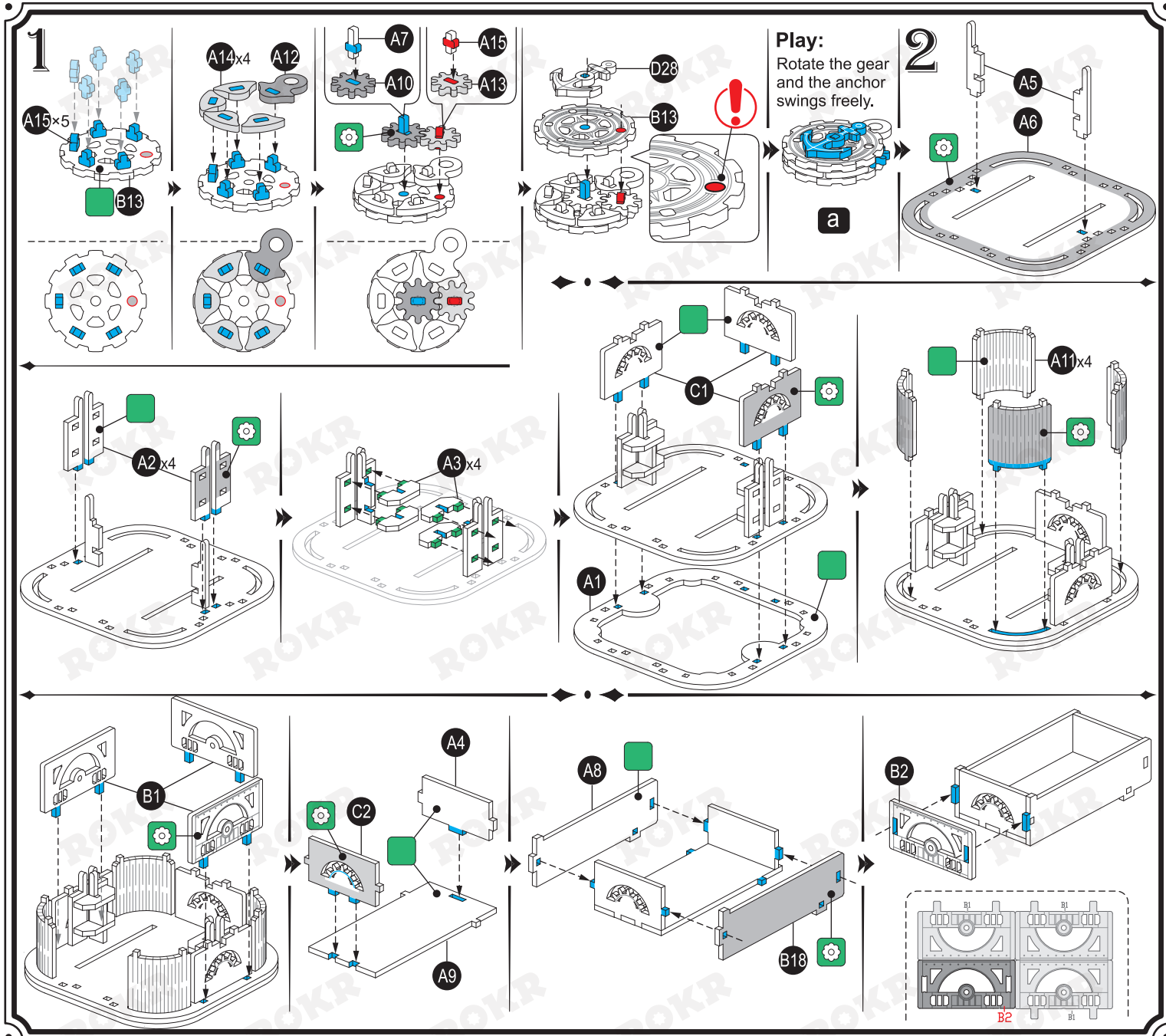


Perspective changed



A7+ "+" means the part has spare ones

Number	P1	P2	P3	P4	P5	P6	P7	P8
Item	Silicone sticker	Support rod	Steel ball	Steel shaft	Shaft sleeve	Counter-weight	Hook	Steel wire
Illustration								
Quantity	1	2	1	1	2	2	1	1





**Adjust slightly to make sure that the fisher can swing smoothly.**  
(Adjust the distance between the legs and the shaft sleeve. The shaft sleeve may shift during assembly.)

Note the direction of the arrow.

Complete 2 same parts

4

Pay attention to the direction.

Sway slightly for easier insertion.

**Swinging Difficulty Solution:**

1. Check whether the shaft sleeve of the leg is too tight.
2. Check whether the fish basket interferes with the hand movement.
3. Check the gravity hammer. If it is not hanging straight down, the fishing boat may become unstable.

**Swaying boat:**  
Lift the pendulum to any position, then release it. The boat will swing back and forth.

Gear compass

Storage box

Complete