



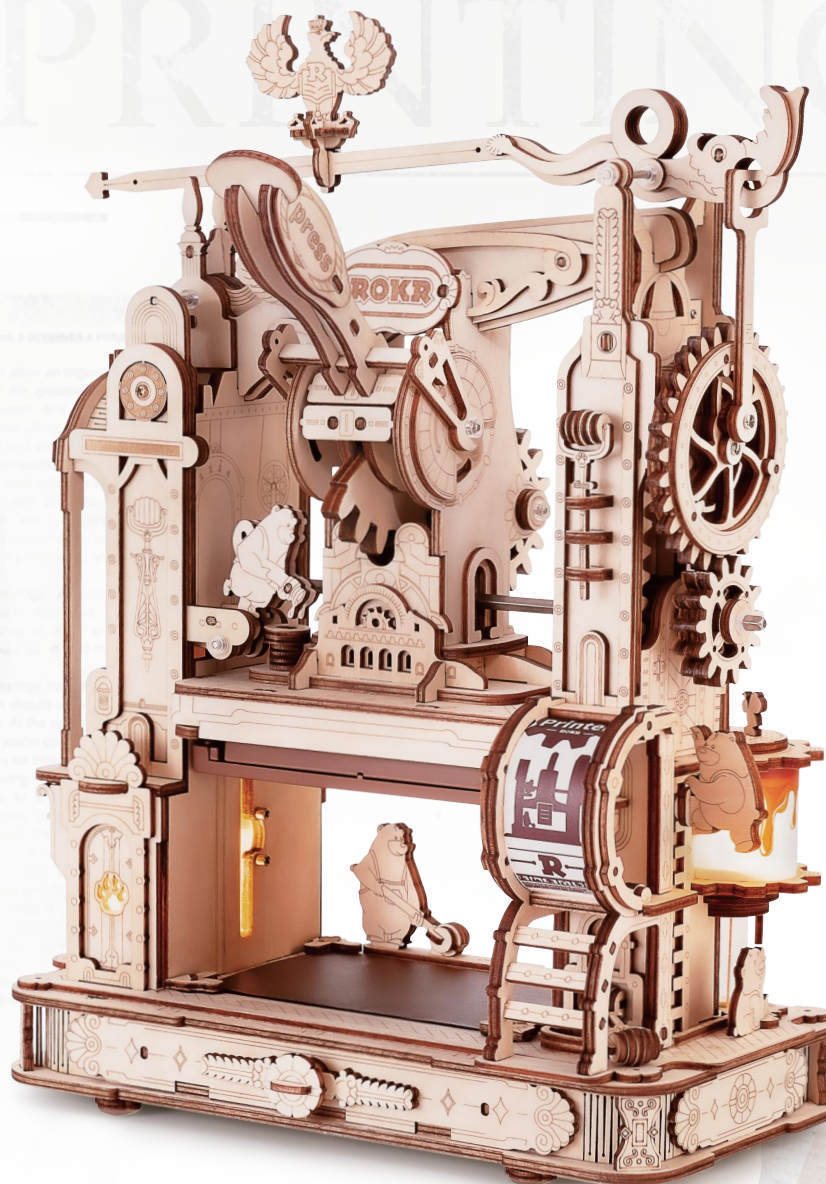
# Classic Printing Press

Flowing Through The Woodgrain

LK602

ASSEMBLY INSTRUCTION

ROKR



### WARNING:

1. The product is for people who are over 14 years old. Kids should assemble under the guidance of adults.
2. The product requires 2 "AAA/LR03/AM4 1.5V" batteries. (Batteries for self-preparation).
3. Before loading or removing batteries, please loosen screws on the cover of the battery box with the screwdriver first.
4. Non-rechargeable batteries are not to be recharged.
5. Rechargeable batteries are only to be charged under adult supervision.
6. Rechargeable batteries are to be removed from the toy before being charged.
7. Different types of batteries or new and used batteries are not to be mixed.
8. Batteries are to be inserted with the correct polarity(+ and -).

9. Remove the exhausted battery in time.
10. The power supply terminal cannot be short circuited.
11. Do not connect the wire to a mains outlet.
12. The product is not to be connected to more than the recommended number of power supplies.
13. The product contains strong light source and do not look at it directly.
14. The instruction must be retained since it contains important information.

### MAINTENANCE:

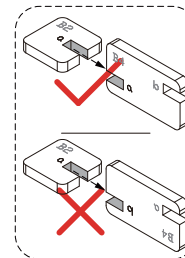
1. Keep the product away from the source of ignition and water to prevent any damage.
2. Don't use chemical reagents like alcohol and ammonia water to clean the product.
3. Use clean and soft fabric to clean the product if necessary.



Product Display

### ATTENTION

1. Take off the pieces from the board according to each step before assembling and place them properly in case of missing.
2. Please carefully read the instruction book when assembling and keep it properly for later verification.
3. Polish the parts with sandpaper to enhance aesthetic feeling and gear lubrication.
4. Repair with glue prepared by yourself if the wooden pieces would be broken.
5. There are letters on some parts as shown and assemble them together with the same letters.
6. For some complicated steps, please scan the QR code with remind for assembling videos.
7. There is a little difference between several parts and the pictures on instruction, subject to parts number.
8. There are spare parts on wooden boards.



### \*CUSTOMER SERVICE

**ROKR Facebook: @rokrofficial Email: service@robotime.com** Please contact us on Facebook or email if you have any questions.

## FAQs:

Problem	Cause	Solution
1. The printing is not clear. What should I do?	1. The rubber letters are not inserted into the right position. 2. The rubber letters are too close that their edges are irregular. 3. The ink is dried or not enough.	1. Insert the rubber letters again and leave a gap in each line and each column. 2. Add a small amount of ink multiple times. (the ink needs to be self-prepared).
2. It's hard to assemble parts. What should I do?	1. Some transmission parts may fit tightly, and tools can be used to assist in pressing.	1. Check for assembling errors. 2. Press with the assembled tool.



Polish the parts with sandpaper



Complete 2 same parts



Wax the yellow parts



Complete 4 same parts



Special attention in assembly



Flip to assemble



Ensure the parts running smoothly



Perspective changed



Ensure the connection of gears smoothly



Step 1



Remove protective film



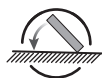
Step 2



Printed side



Blank side



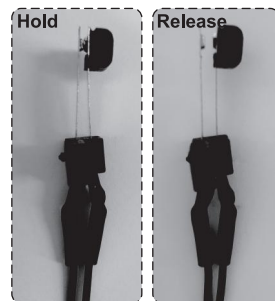
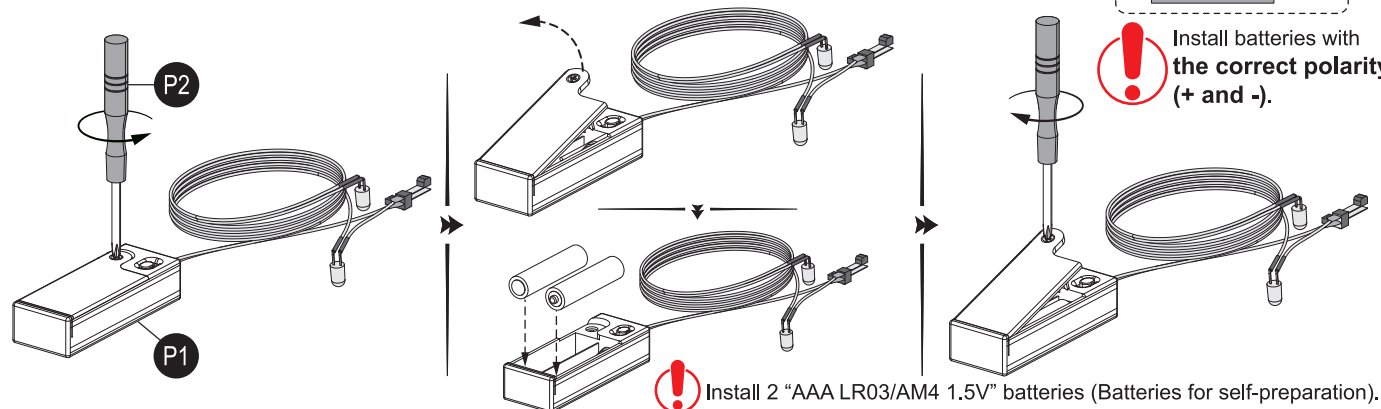
Put flat on the table to assemble



Assembly tips

## Test the electronic part before assembling

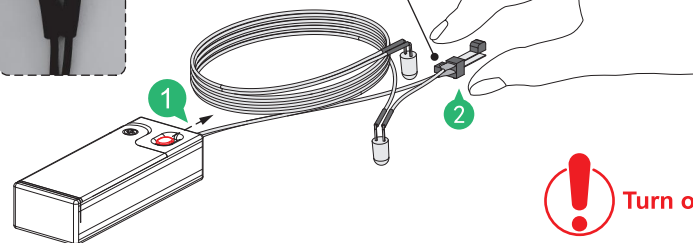
(Turn off the battery box **switch** after testing. Then start your assembly.)



Do not look at the light source directly.



**Hold the blade switch and the light is on.**  
**Release the blade switch and the light is off.**



**Turn off** the battery box **switch** after testing.

**Hold but the light is not on.**

Please check if:

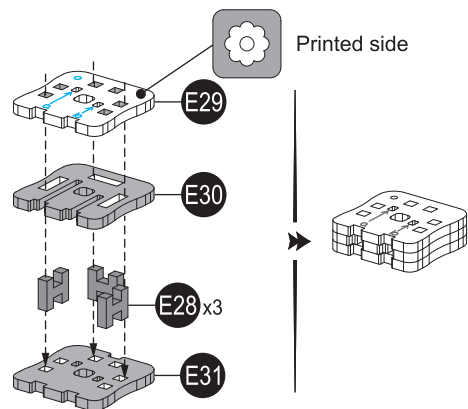
- the battery box switch is in the 'on' position.
- the batteries are inserted with the correct polarity.

**Release but the light is still on.**

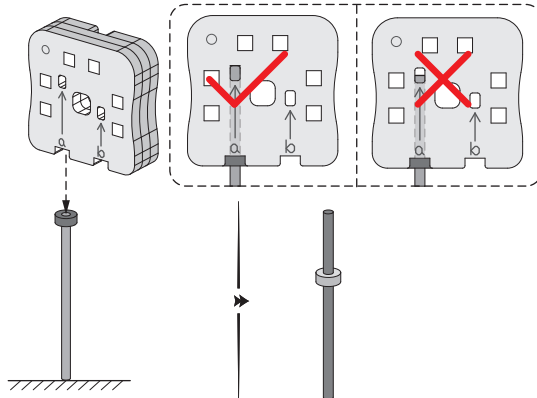
It may be out of shape due to transportation. Please adjust it as the picture. (Metal sheets may deform during transportation.)



# Tool Assembly



**How to use this tool?**  
(This step is for demonstration purposes only and does not involve the actual assembly of the steel shaft with the shaft sleeve.)



1

A1

A2

A3

A4

A5 x2

A6

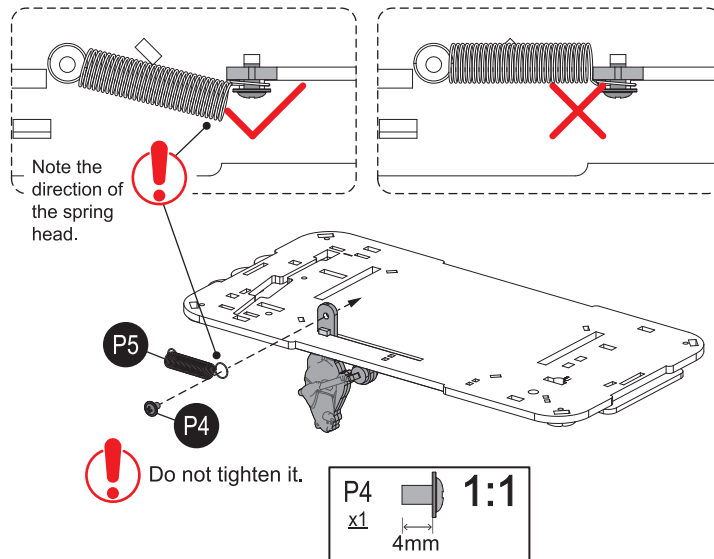
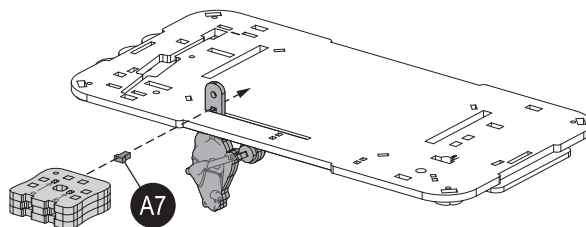
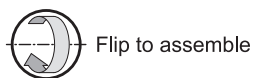
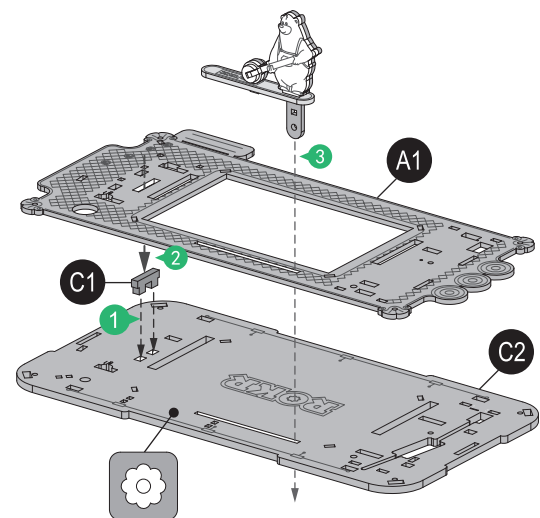
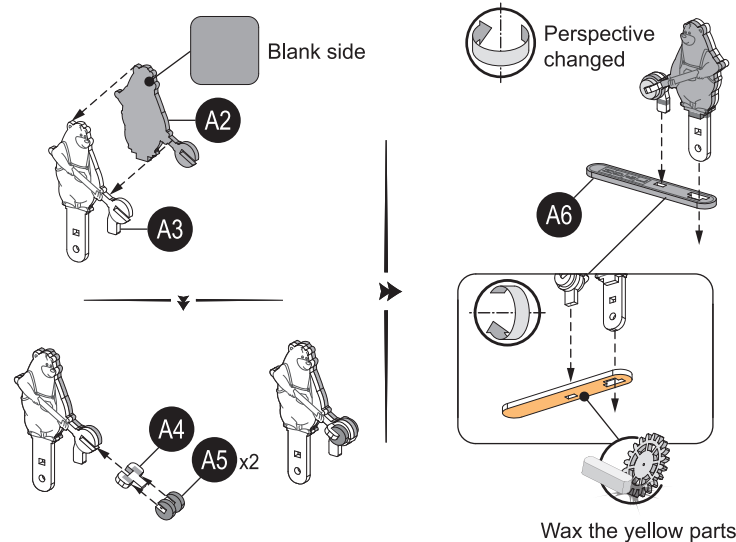
A7

C1

C2

P4

P5





A8 x3

A11

A12

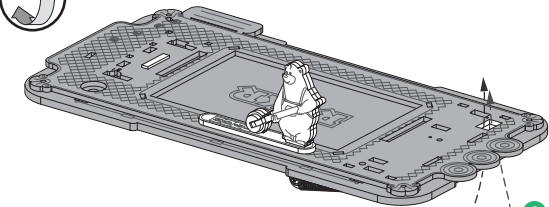
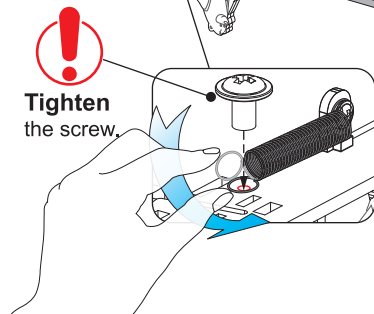
C10 x2

P1

P4

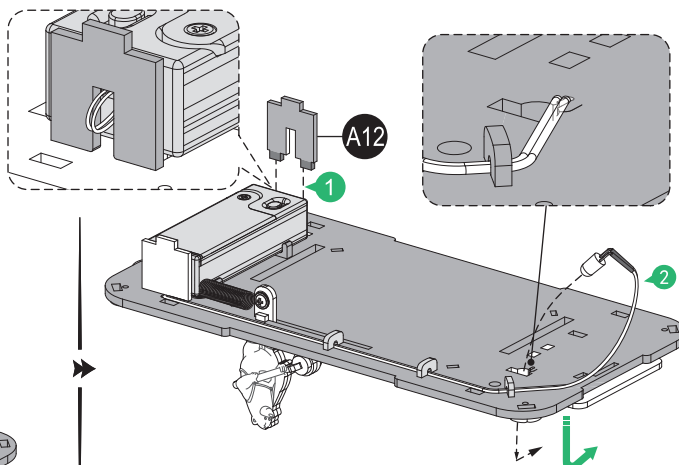
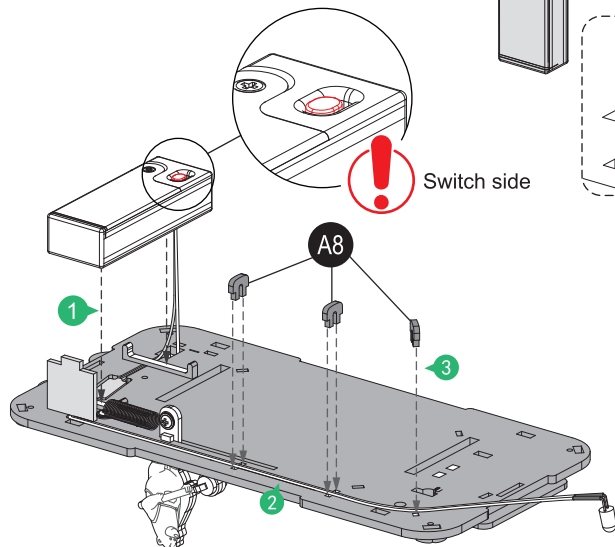
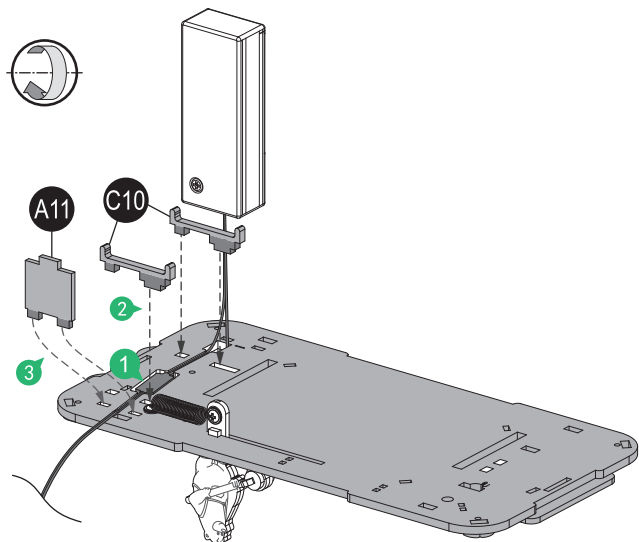
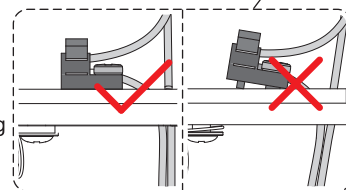
P6

P4  
x1  
4mm  
1:1



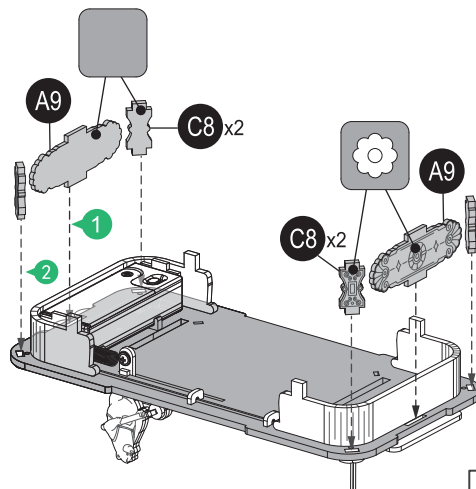
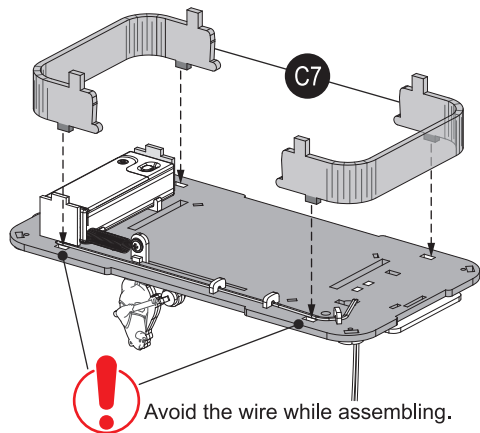
P6  
x1  
7mm  
1:1







**Align with corresponding holes before tightening the screw.**

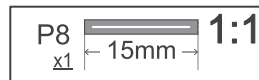
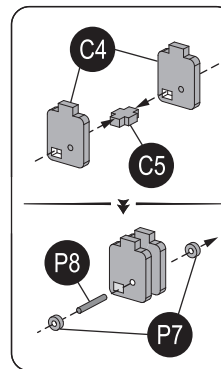


**Arrange the wire as shown.**  
Pass the wire through the hole and insert it into the groove with the **tweezers**.

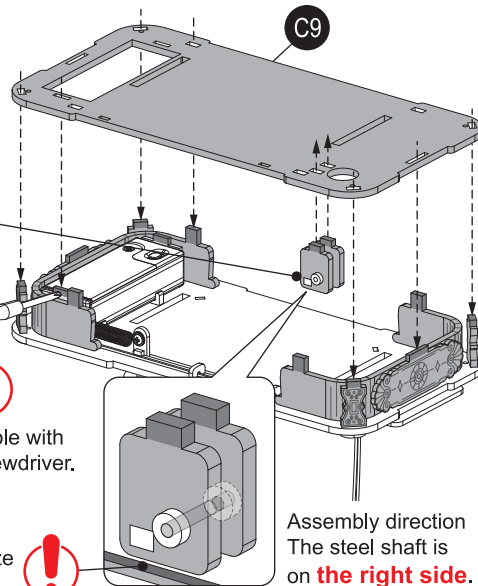
- A9 x2
- C4 x2
- C5
- C7 x2
- C8 x4
- C9
- F1 x4
- P7 x2
- P8
- P12 x4
- P13 x4



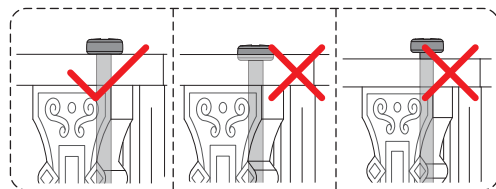
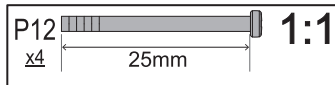
P16	P7	P23
		
		



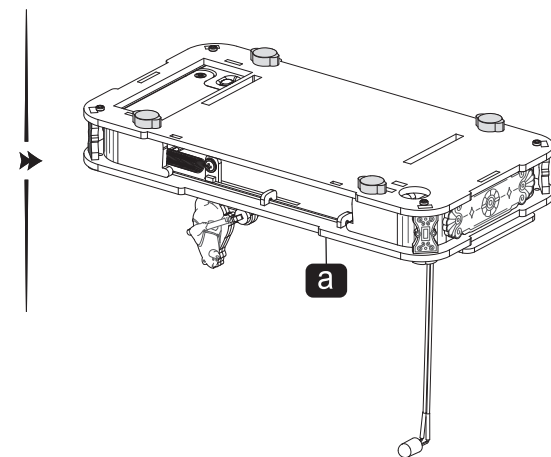
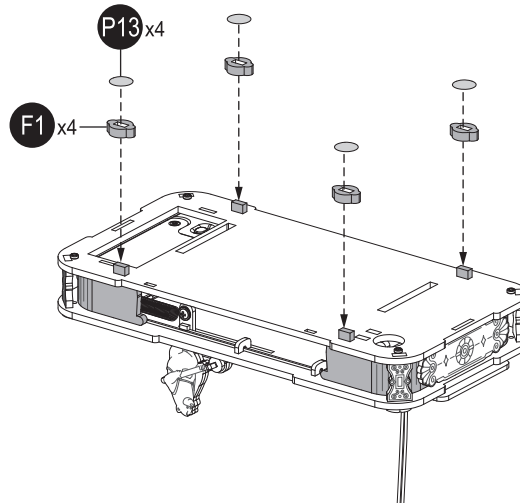
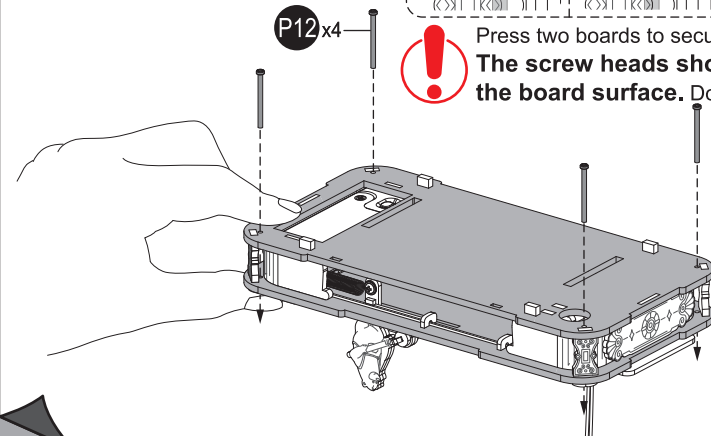
Do not squeeze the wire.



Assembly direction  
The steel shaft is on **the right side**.

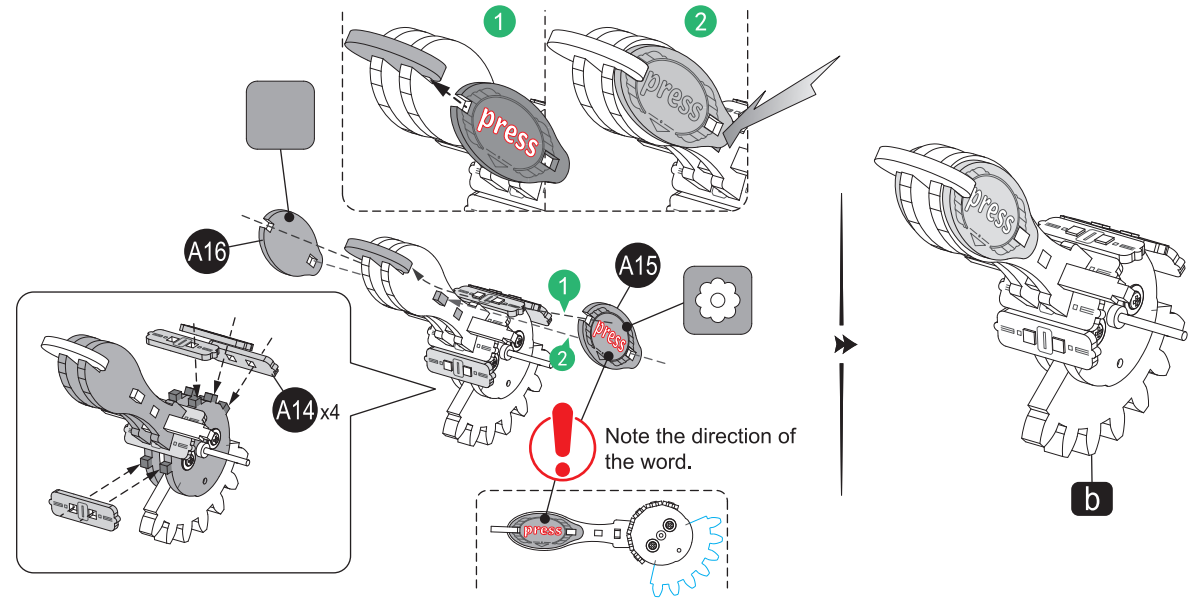
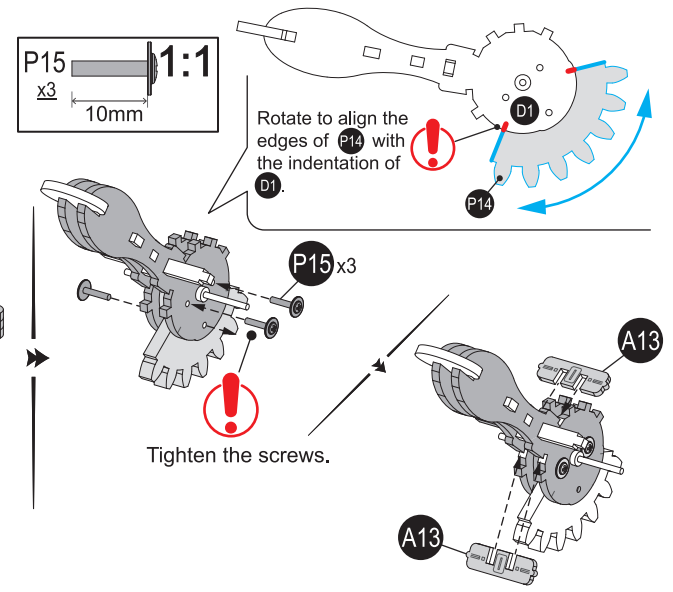
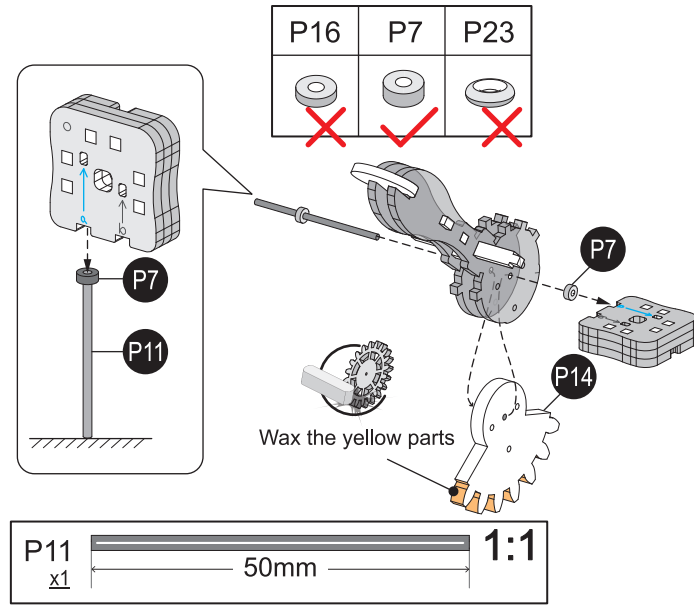
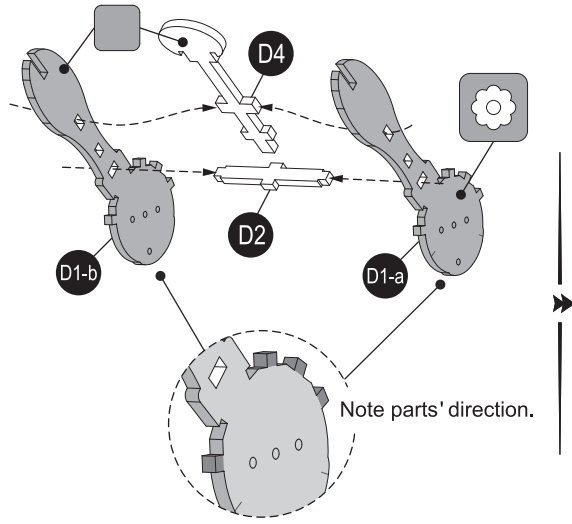


Press two boards to secure them with screws.  
**The screw heads should be level with the board surface.** Do not overtighten.



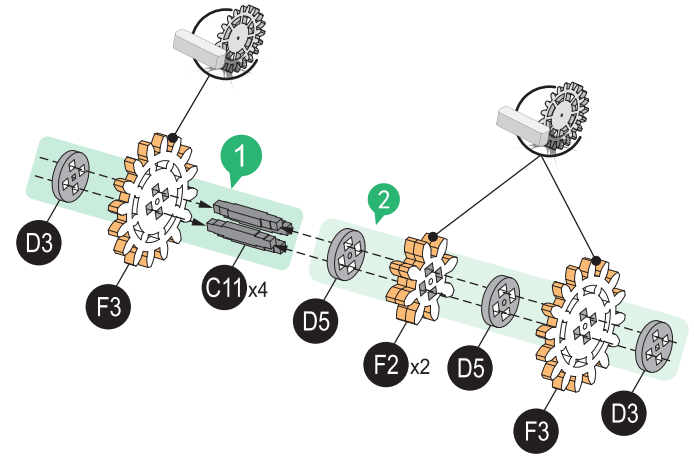
# 2

A13 x2  
A14 x4  
A15  
A16  
D1-a  
D1-b  
D2  
D4  
P7 x2  
P11  
P14  
P15 x3







# 3

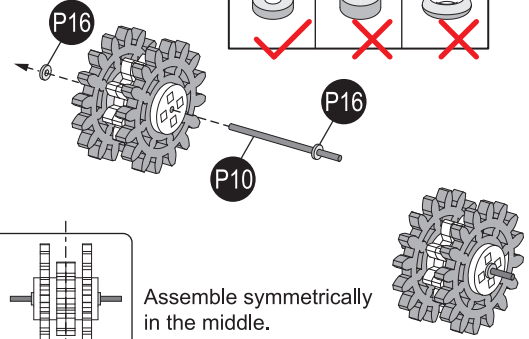
C11 x4  
D3 x2  
D5 x2  
F2 x2  
F3 x2  
P10  
P16 x2



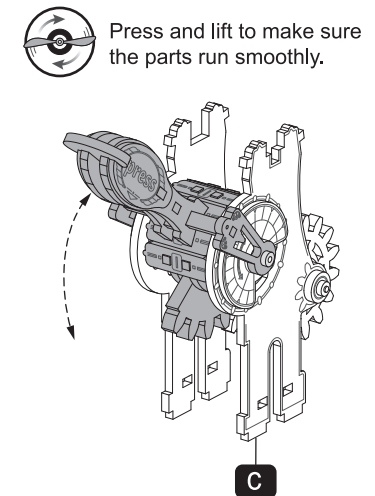
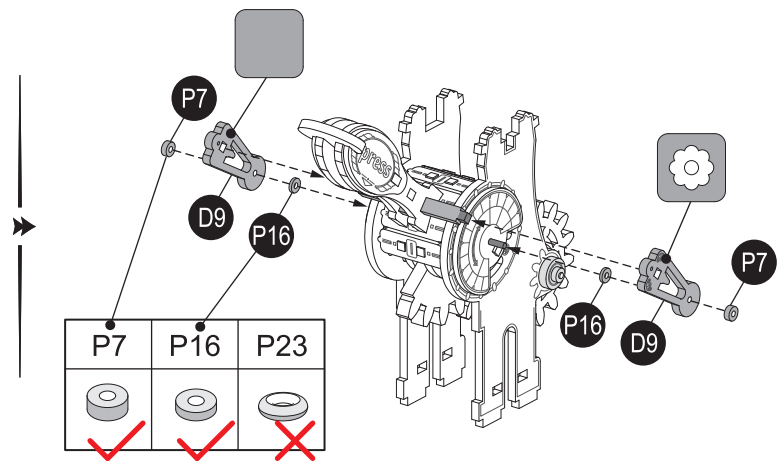
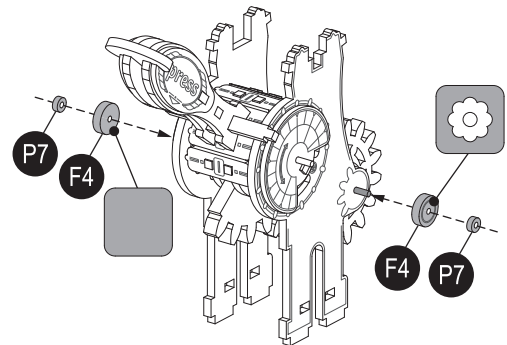
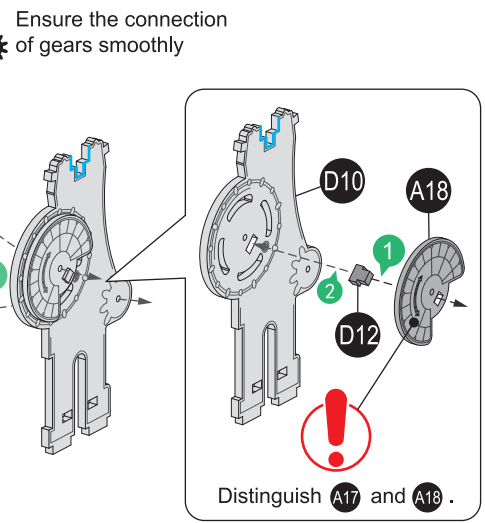
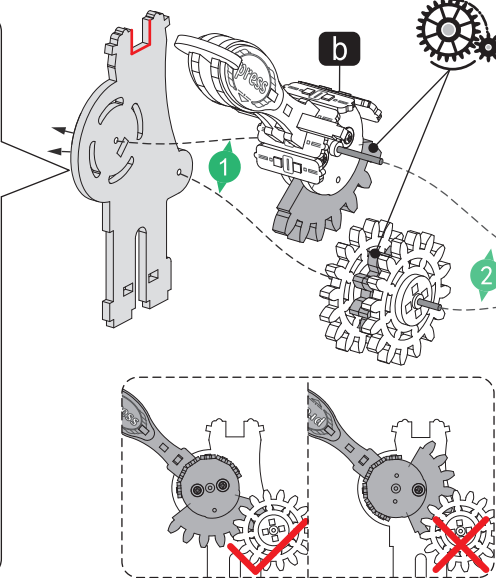
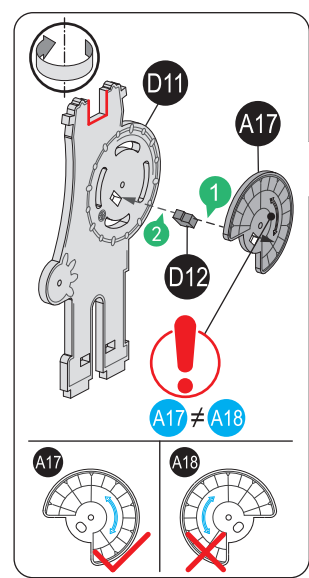


P10  45mm 1:1

P16	P7	P23
		
✓	✗	✗

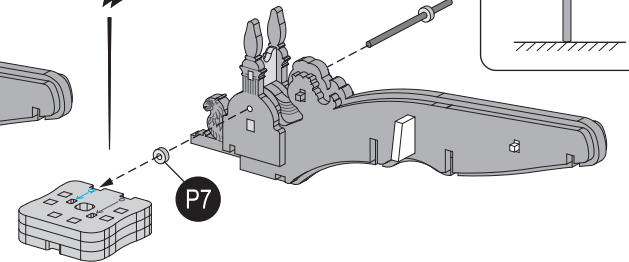
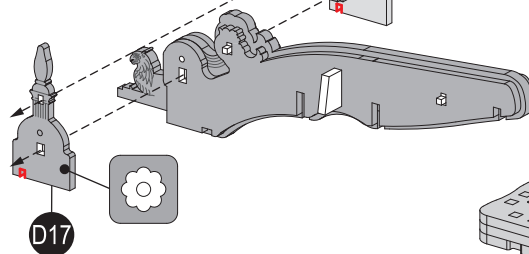
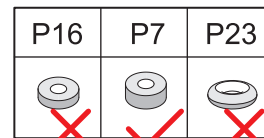
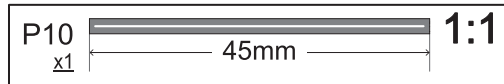
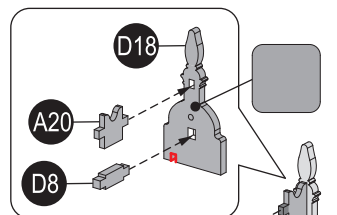
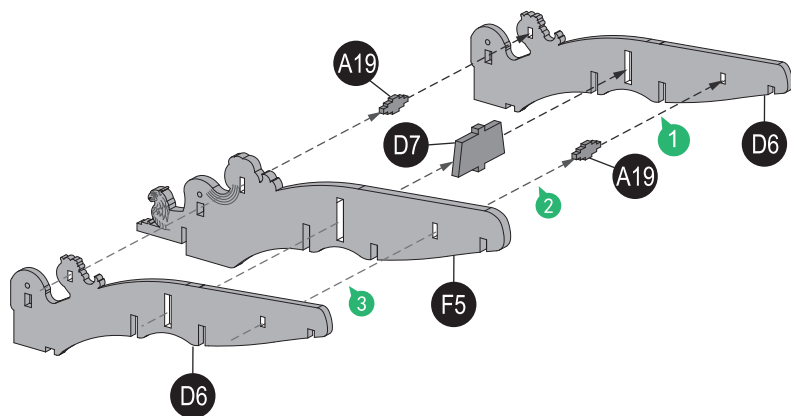


- A17
- A18
- D9 x2
- D10
- D11
- D12 x2
- F4 x2
- P7 x4
- P16 x2



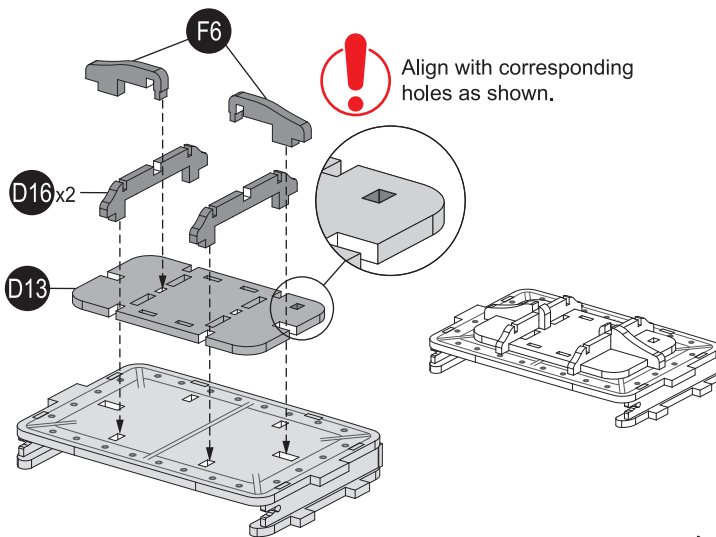
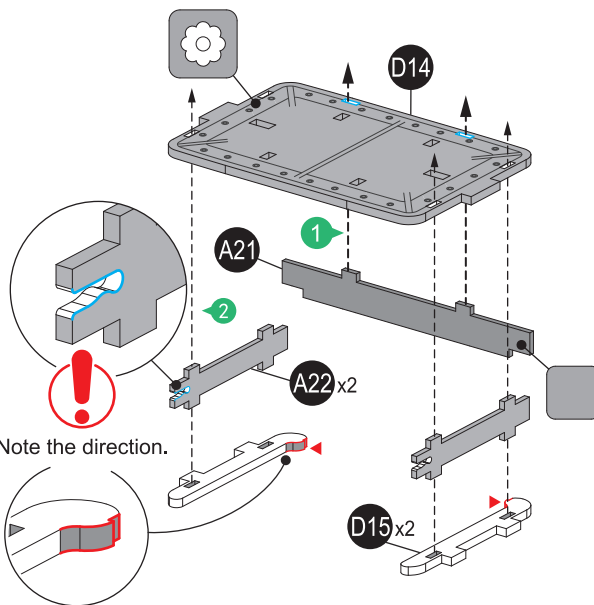
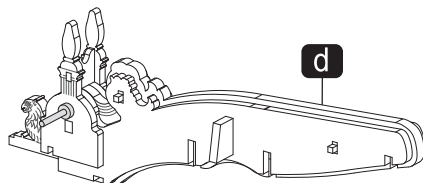
4

A19 x2  
A20  
D6 x2  
D7  
D8  
D17  
D18  
F5  
P7 x2  
P10

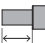


5

A21  
A22 x2  
D13  
D14  
D15 x2  
D16 x2  
F6 x2



A23 x2  
A26  
F7  
F8  
F9 x2  
P18 x4  
P19

P18  1:1  
x4 4mm

