

Luminous Globe

CURIOUS DISCOVERY ST003

ROKR

49.1ST003.100

WARNING:

- The product is for people who include and over 14 years old.
- Kids should assemble under the guidance of adults.
- The power supply used with the electric toy shall be regularly examined for damage to the supply cord, plug, enclosure or other parts, and in the event of damage, it shall not be used until the damage has been repaired.
- The toy shall only be used with a power supply for toys.
- Micro USB power supply for use with the toy, if not supplied with the toy.
- The packaging or instruction must be retained since it contains important information.

MAINTENANCE:

- Keep the product away from the source of ignition and don't soak it into water.
- Don't use chemical solvent like alcohol, ammonium hydroxide or cleaning agent to clean the product.
- Use clean and soft fabric to clean the product. Polish the part edge with sandpaper.

Email: service@robotime.com



ROKR Facebook



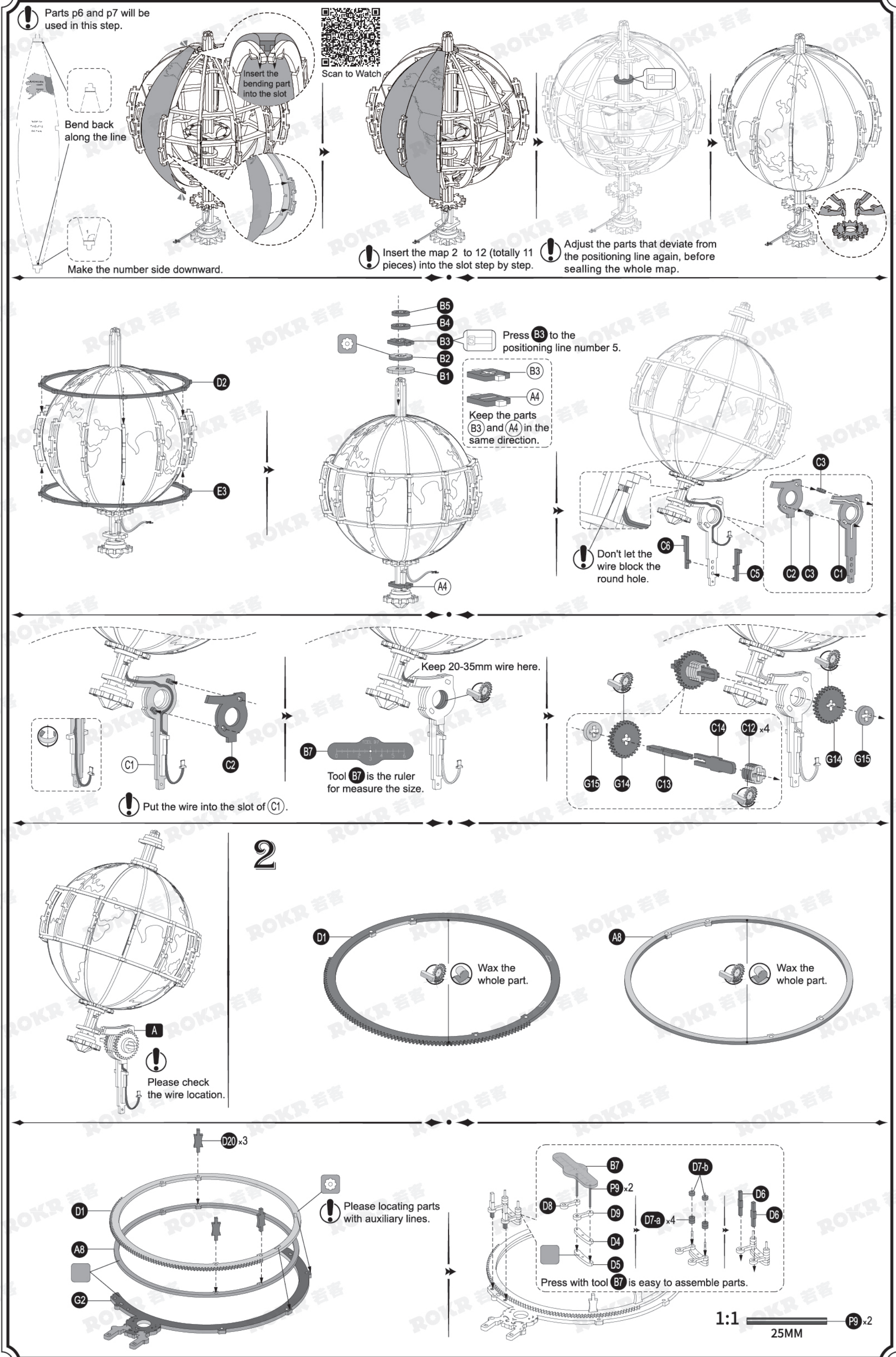
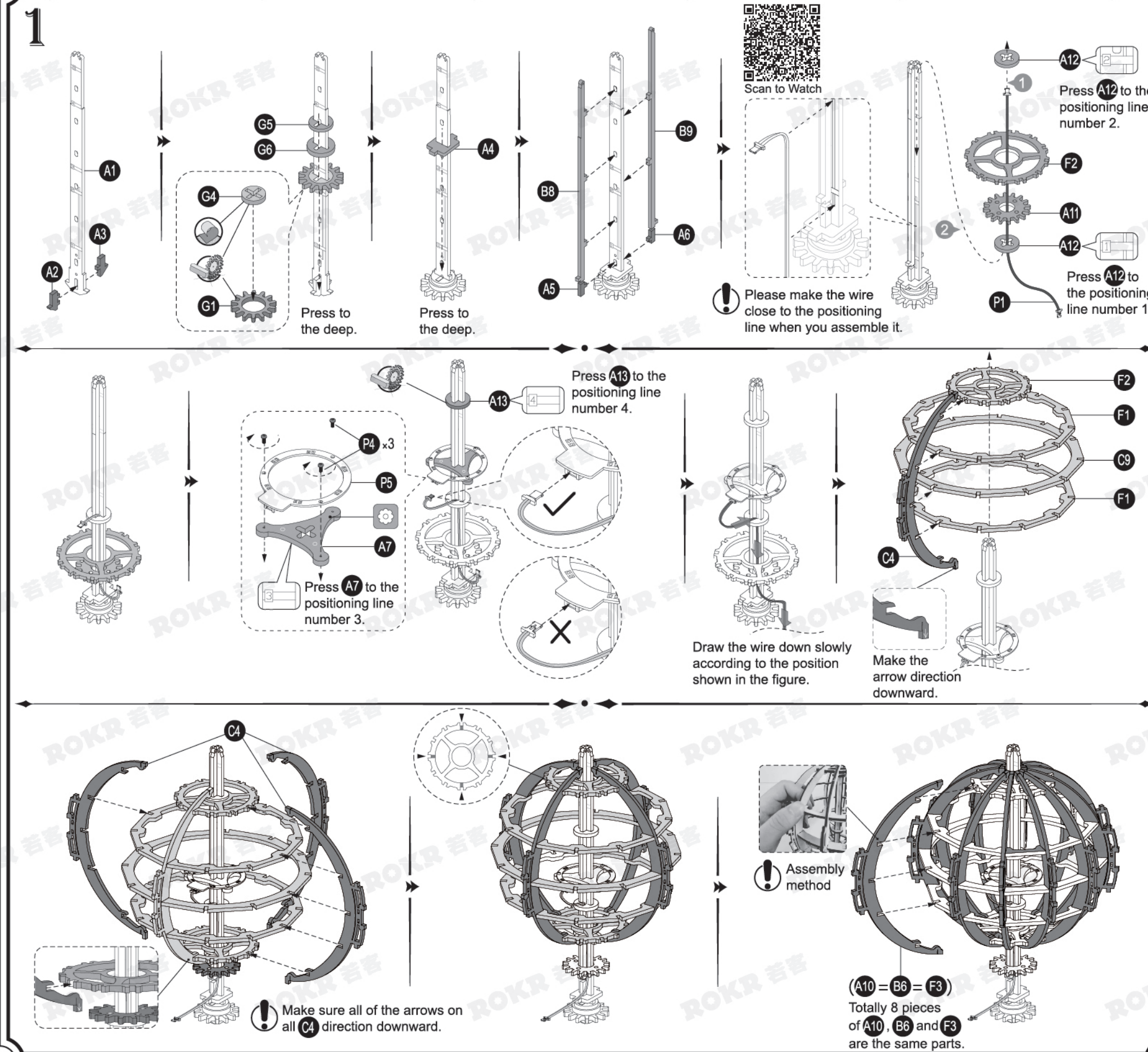
store.robotime.com

Parts List *Due to customs policy in international shipping, the glue may not be included. Please prepare them yourself.

Item	Wire	Sand Paper	Screwdriver	Screw	LED Light	Map 1	Map 2	Steel Shaft	Steel Shaft
Number	P1	P2	P3	P4	P5	P6	P7	P8	P9
Illustration									
Quantity	1	1	1	5	1	1	1	2	2

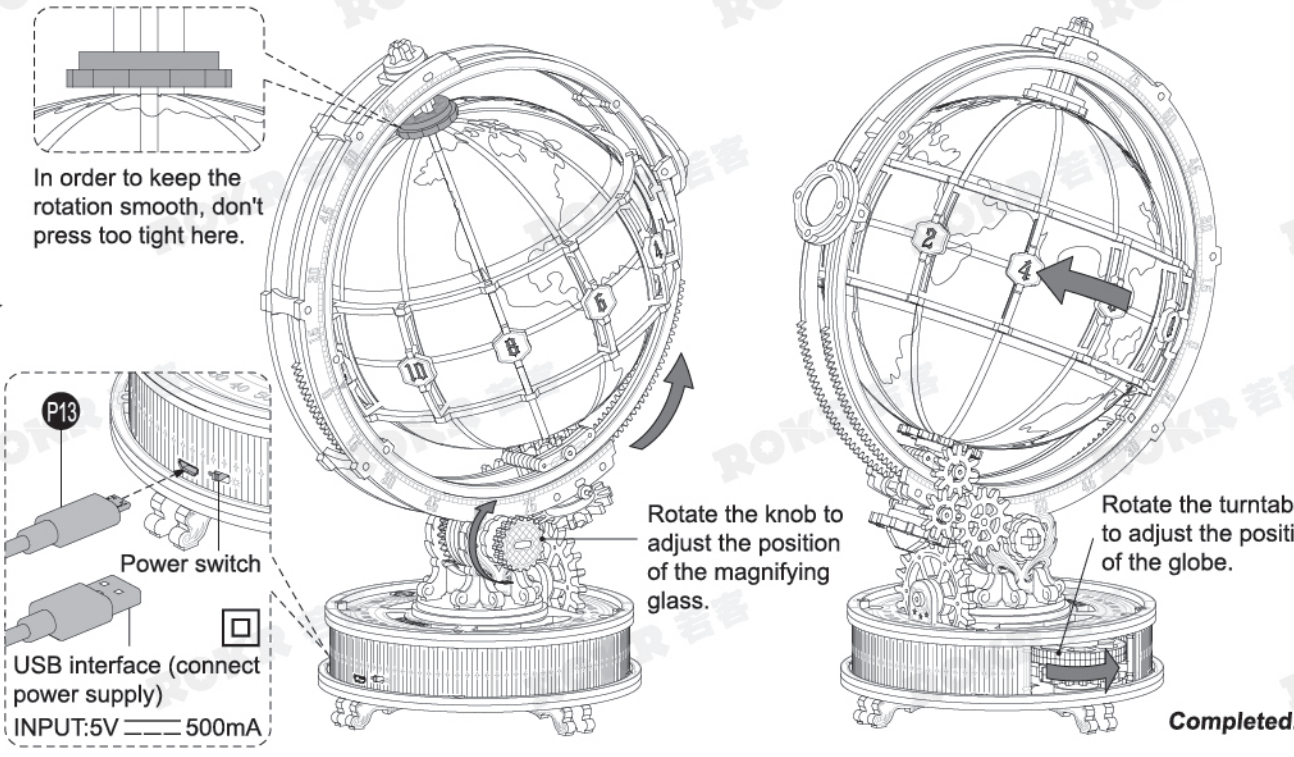
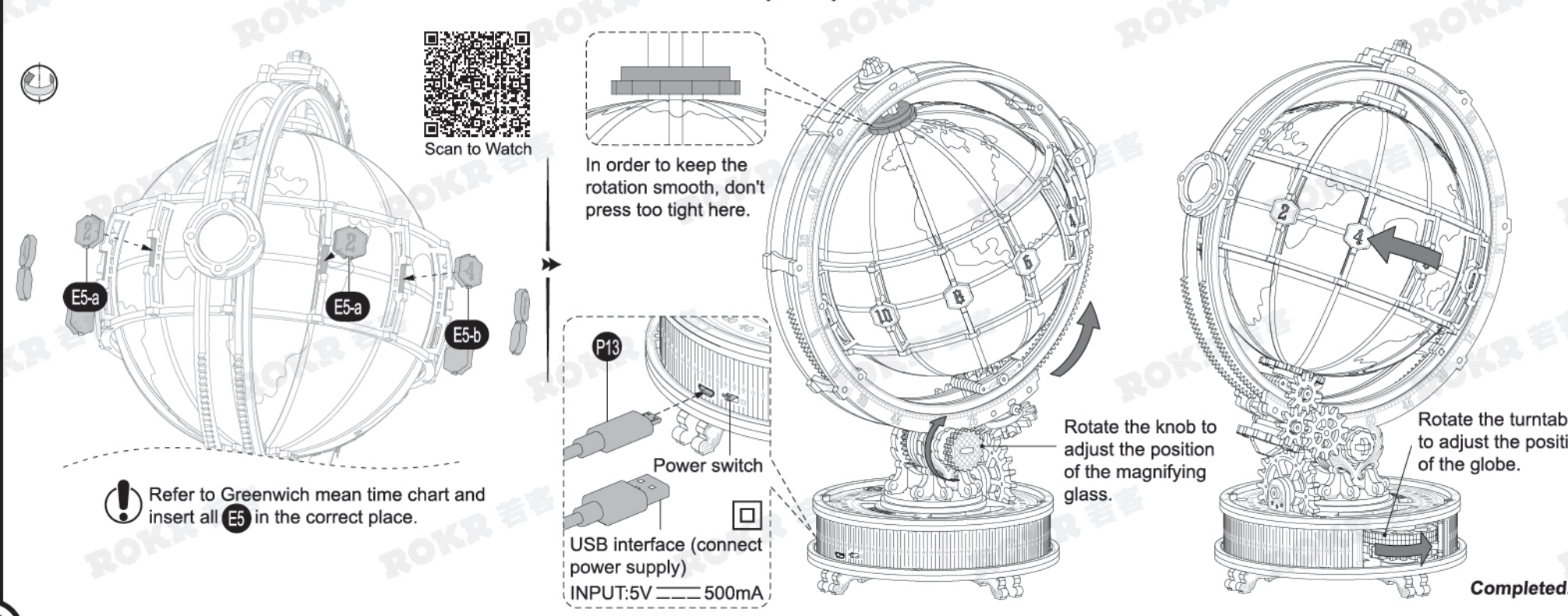
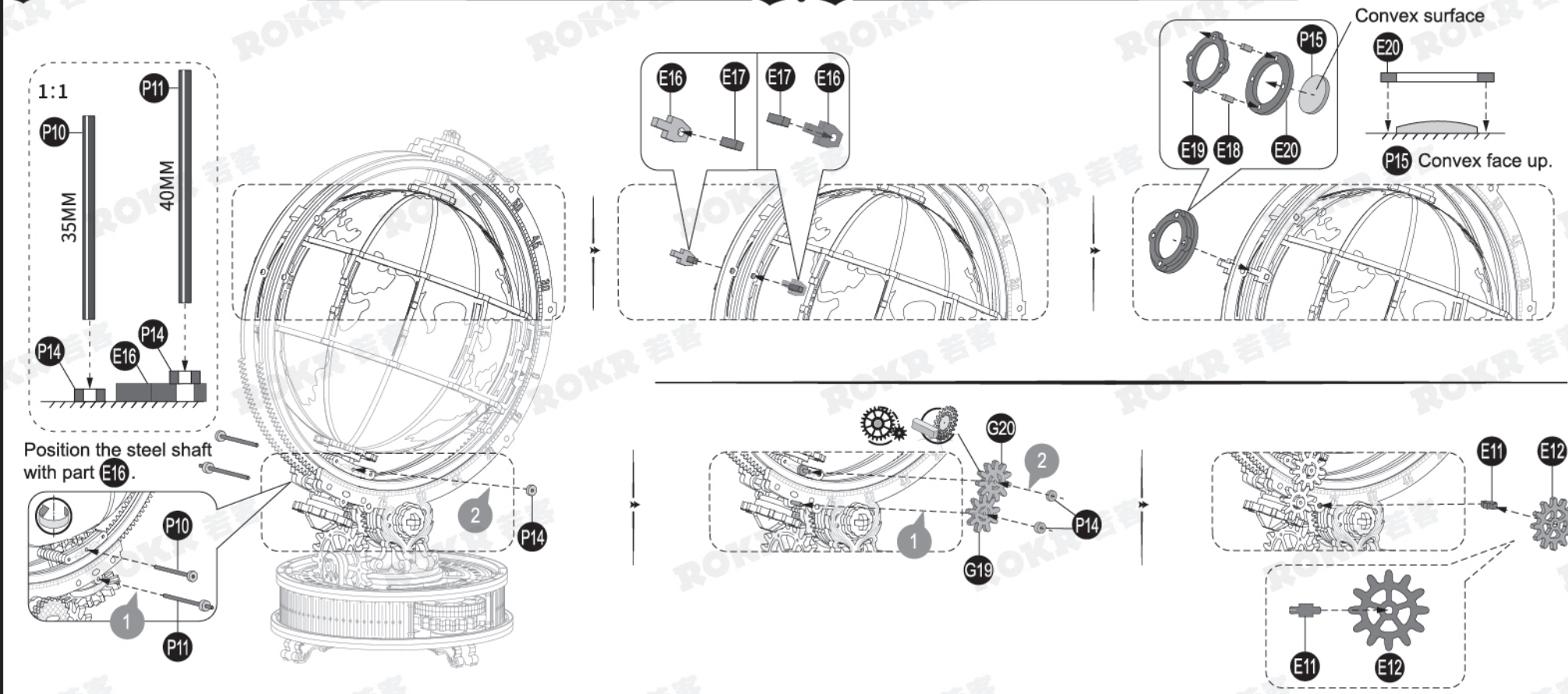
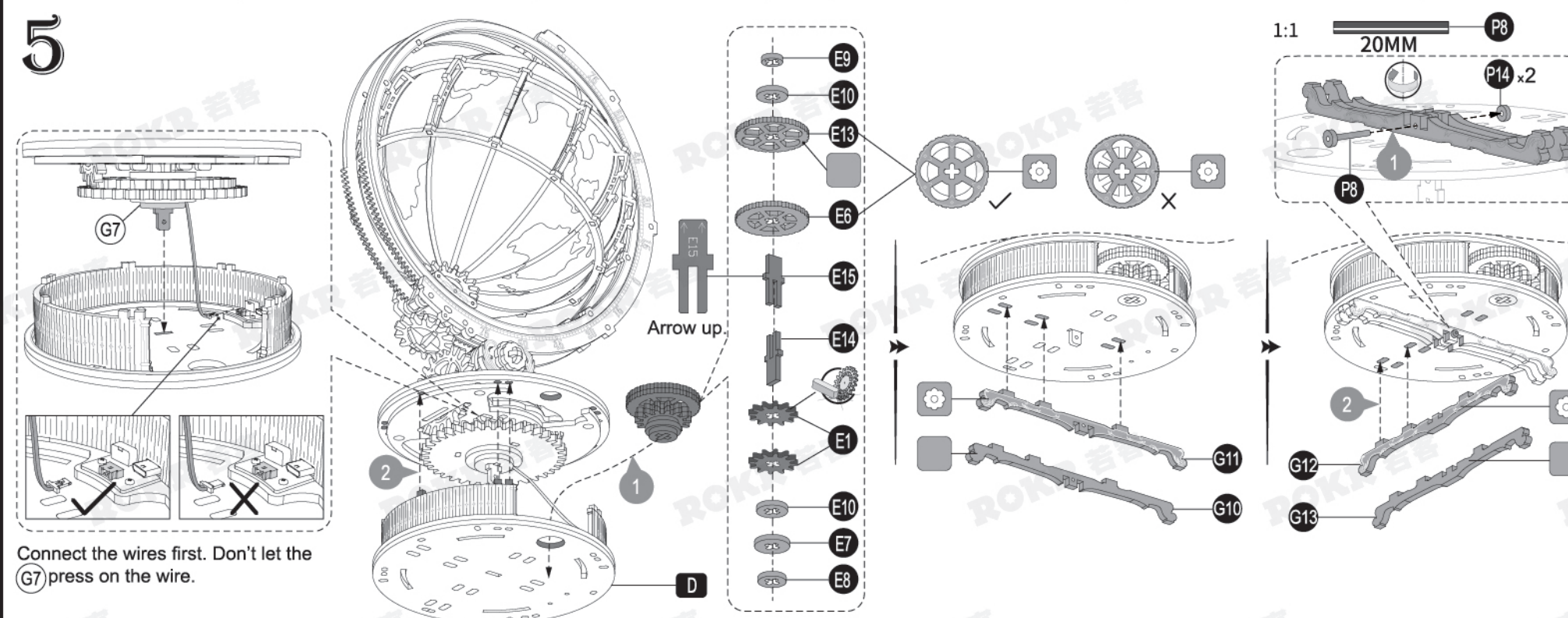
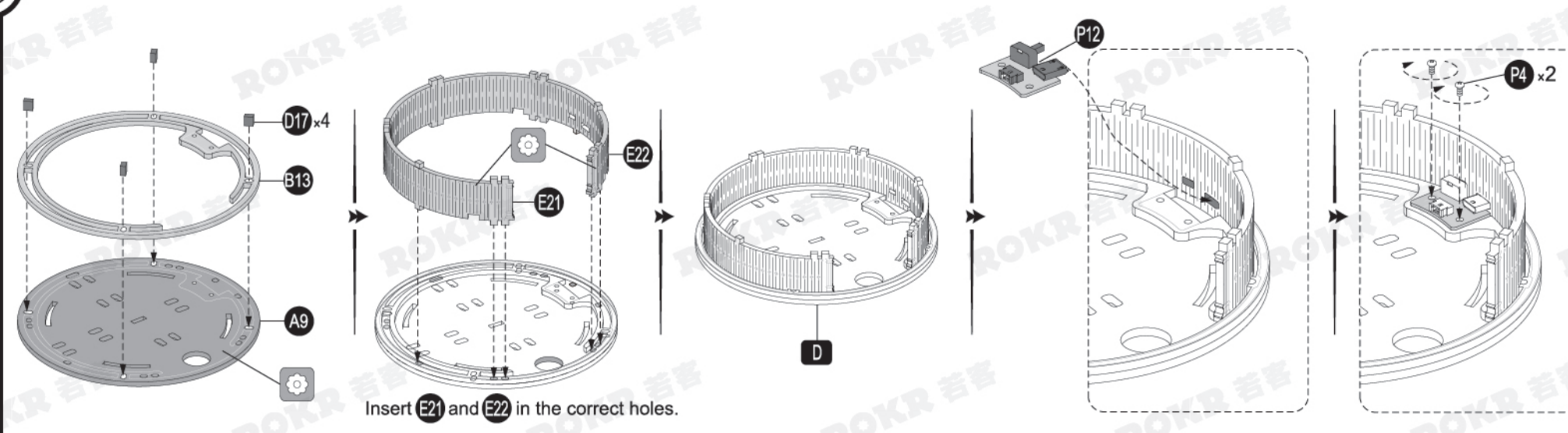
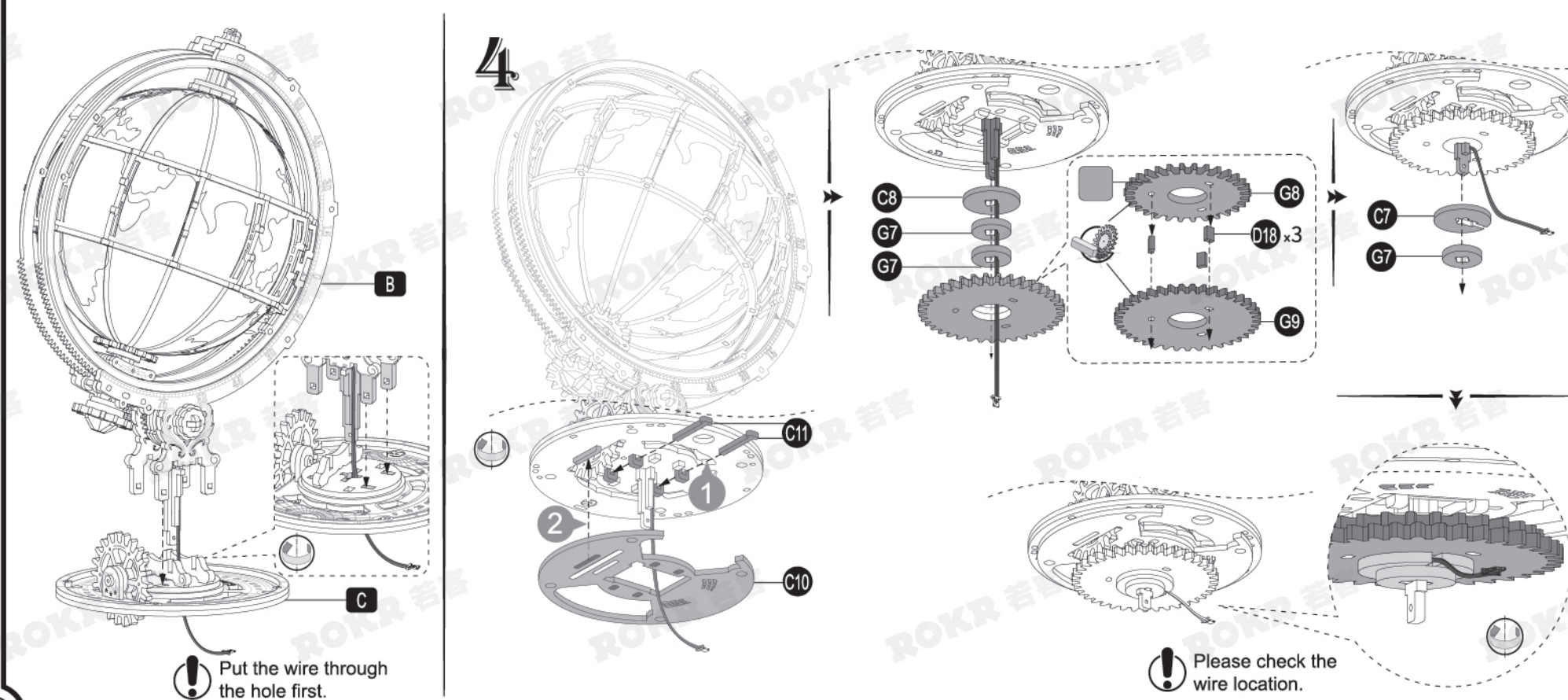
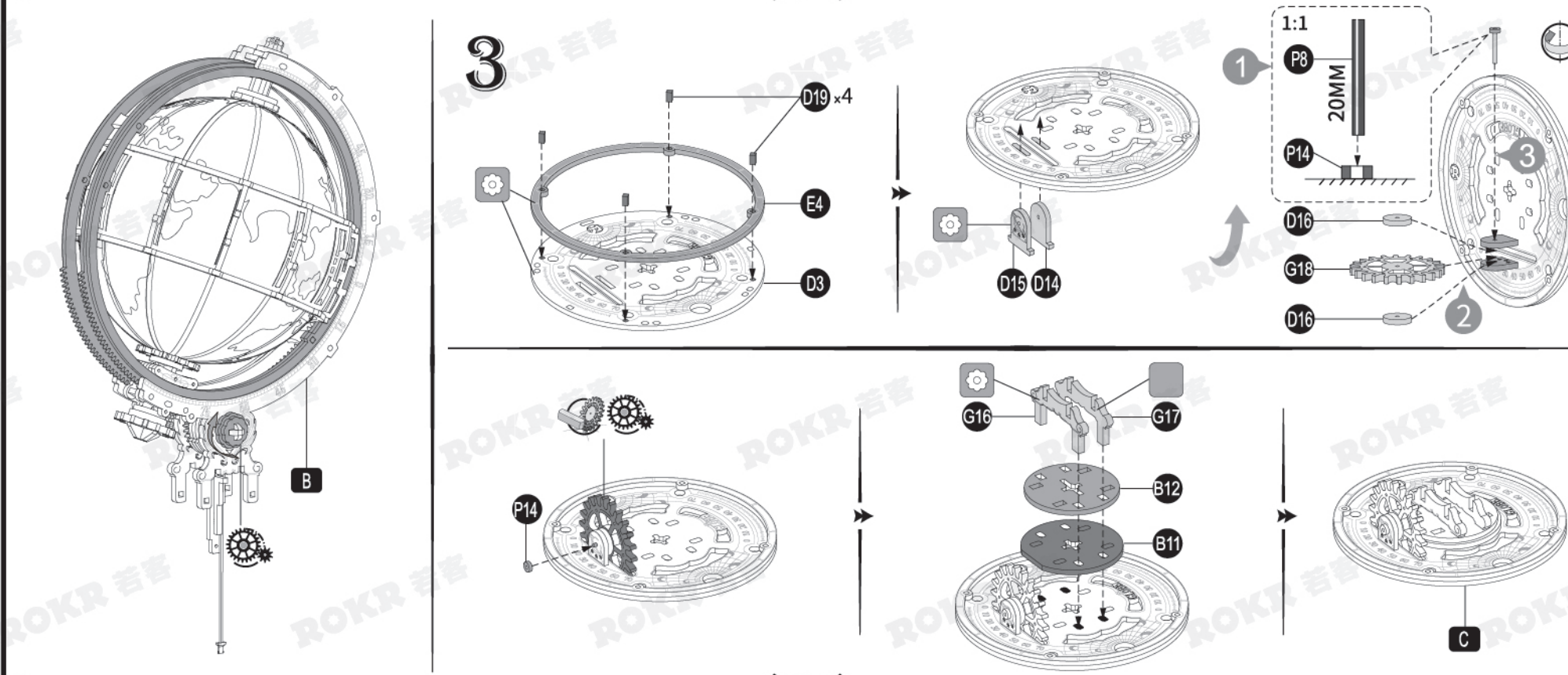
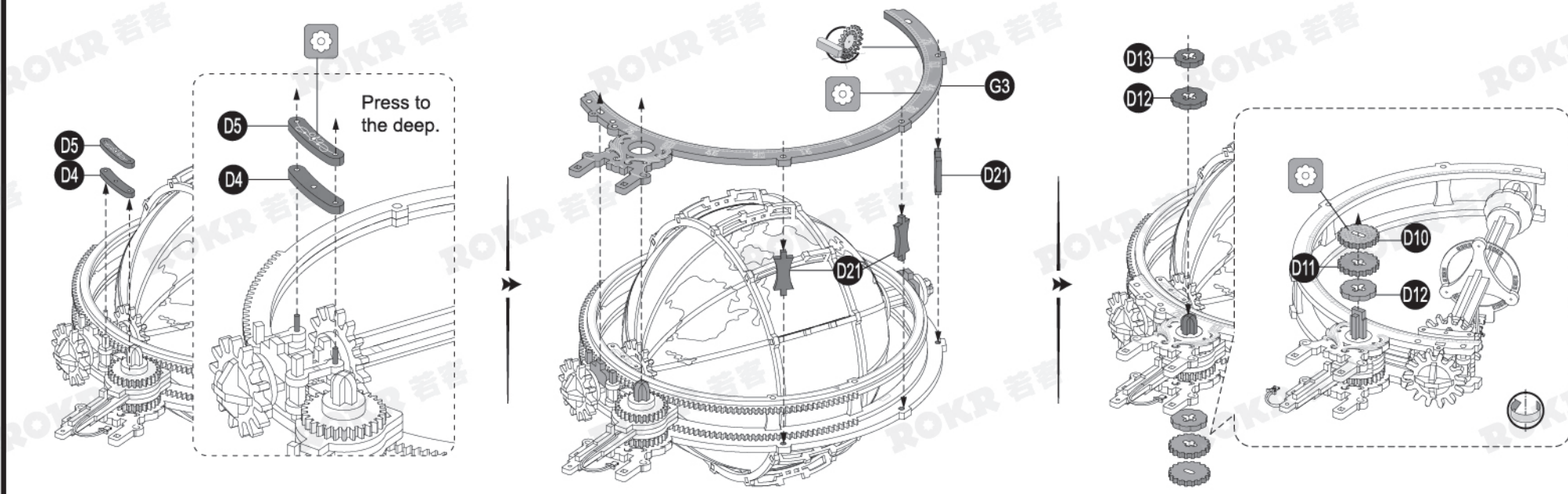
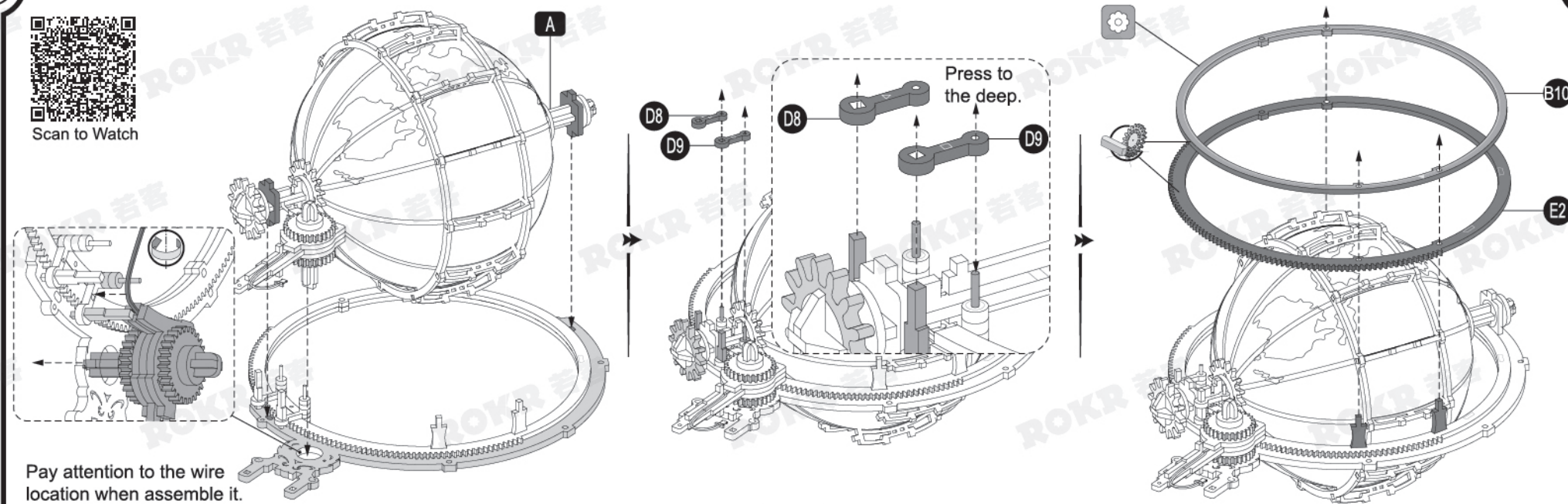
Item	Steel Shaft	Steel Shaft	Circuit Board	Power Cord	Transparent Sleeve	Magnifier	Wax
Number	P10	P11	P12	P13	P14	P15	P16
Illustration							
Quantity	1	1	1	1	9	1	1

- Printed side 1 Step 1
- Perspective conversion.
- Special attention in assembly.
- Wax the gray part with remind.
- Blank side 2 Step 2
- Complete 2 same parts.
- Ensure the connection of gears running smoothly.
- Polish the parts with sandpaper.





Scan to Watch



Completed.