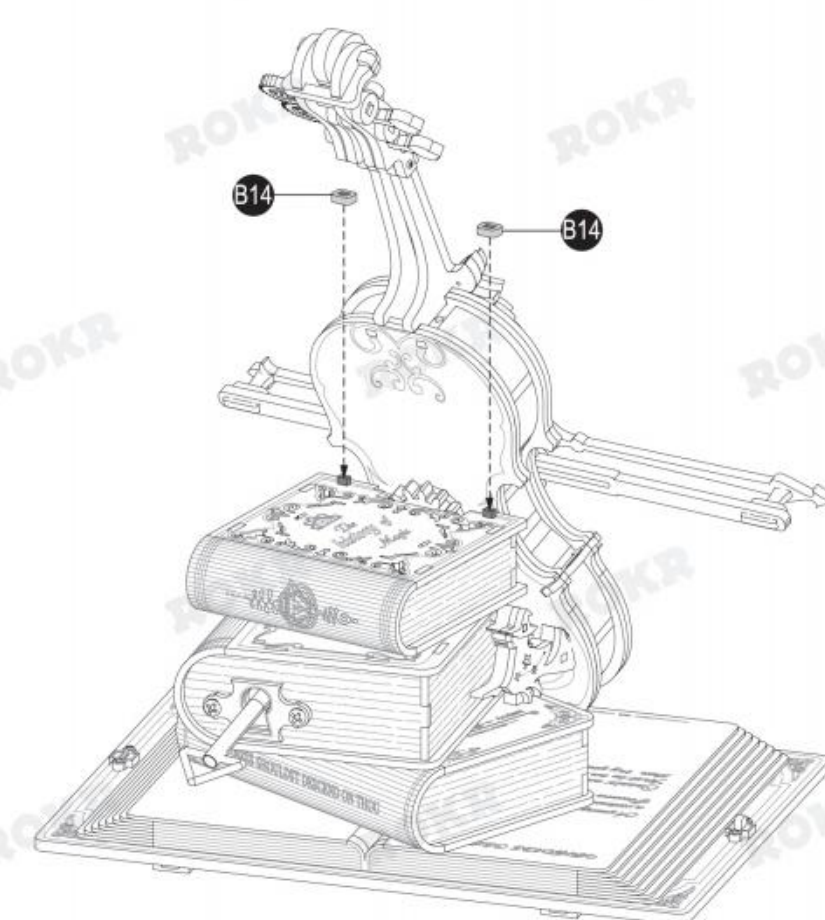
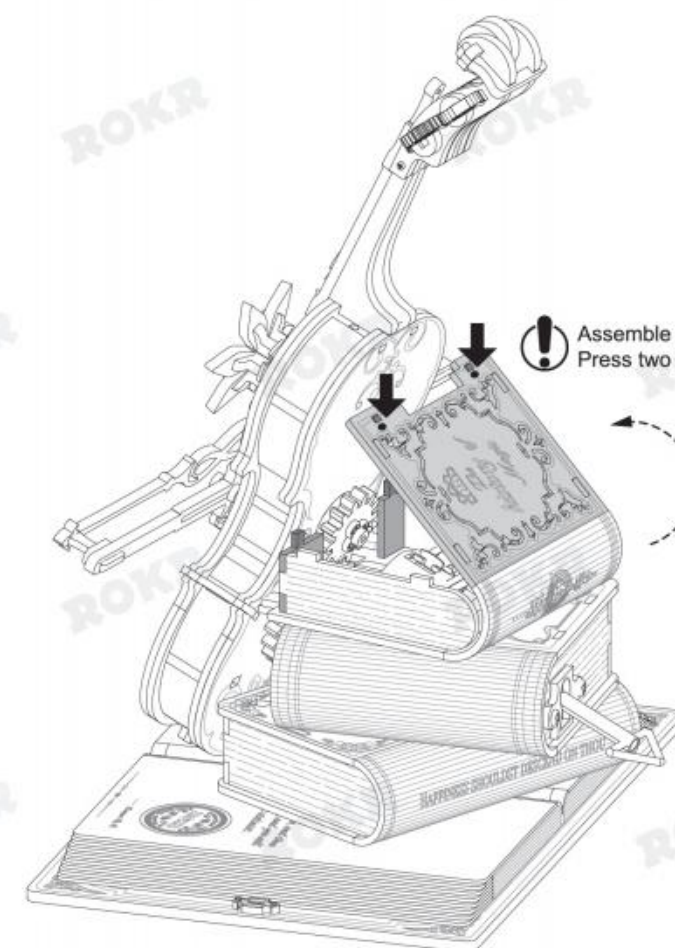
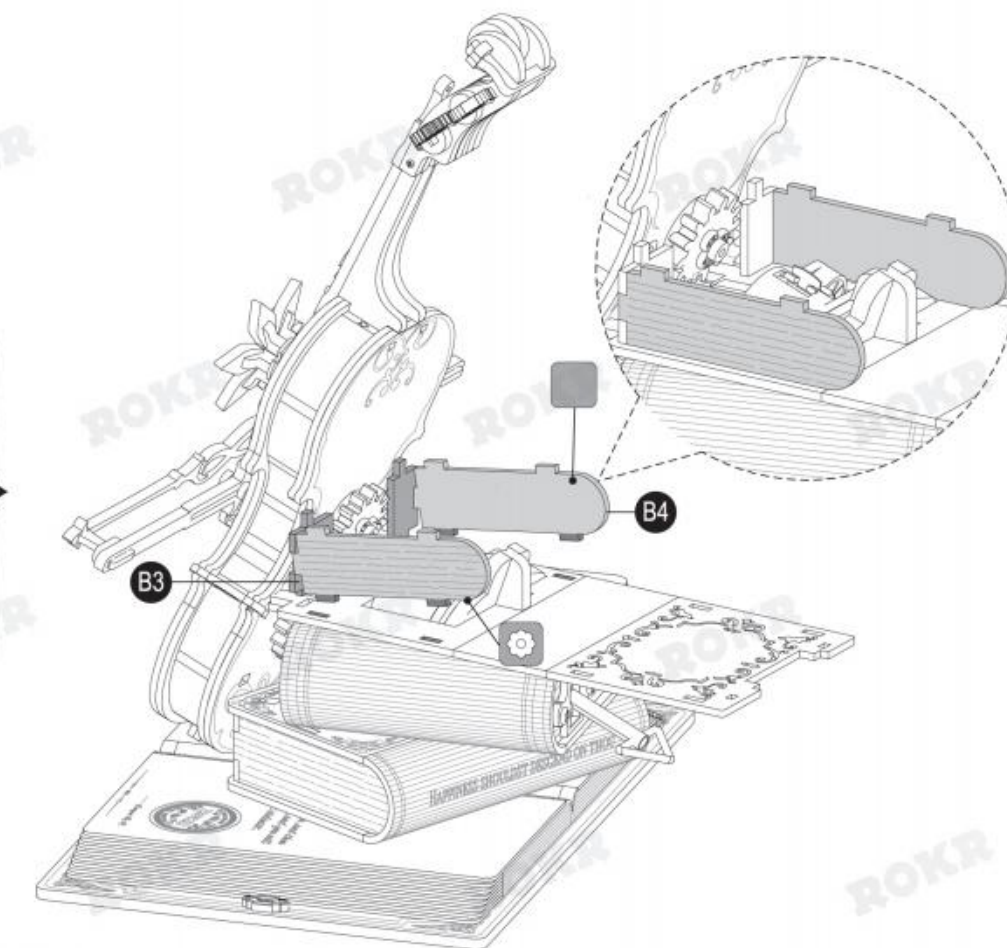
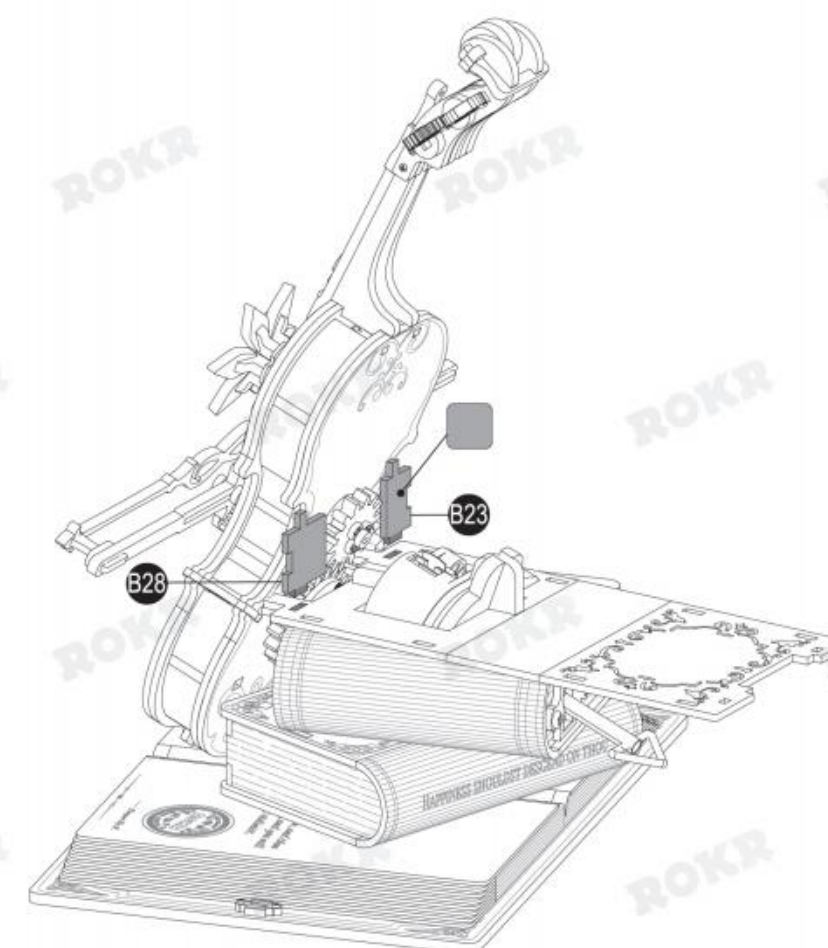
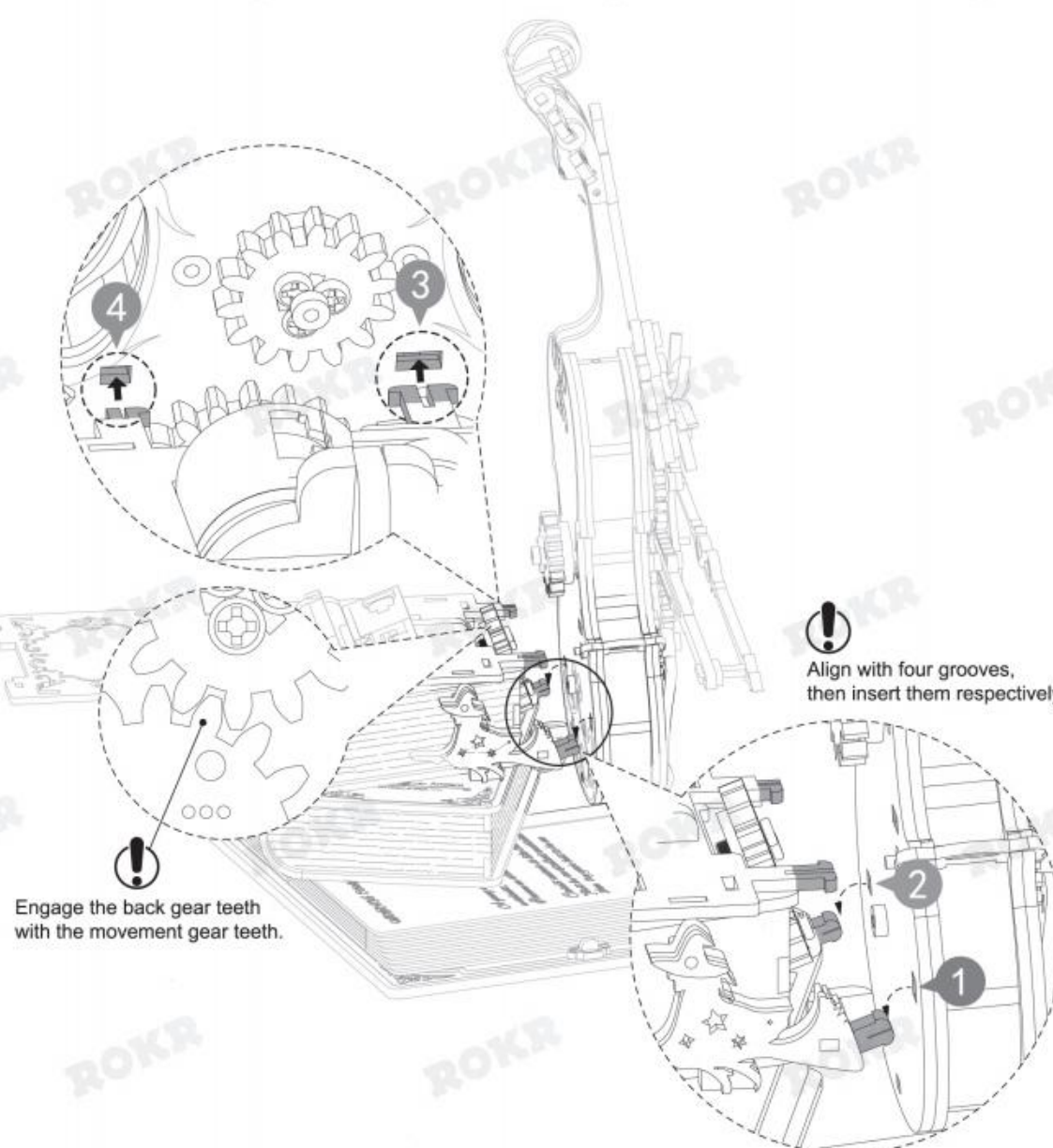
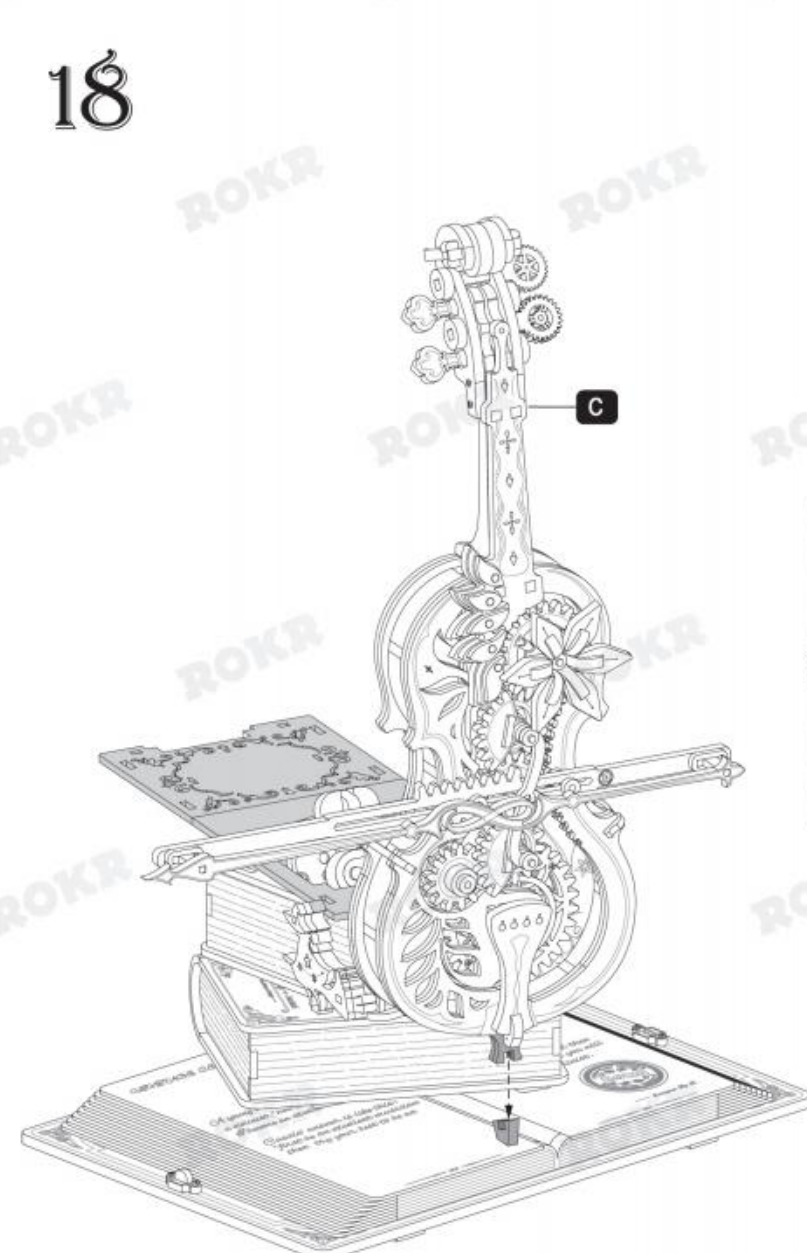
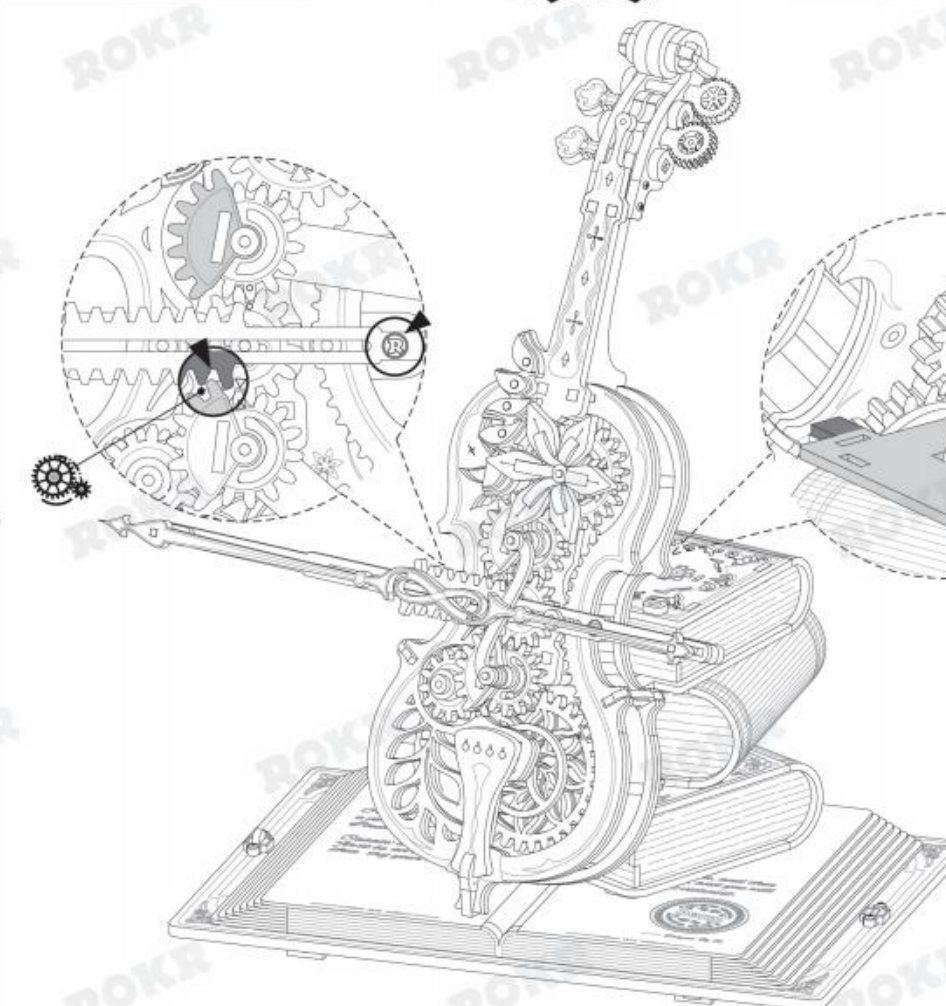


18



### Solutions for the failure:

1. If the cello cannot rotate, please check if the gear is engaged with the rack as Step 12-2. The mark "R" should face upwards.
2. If the rack separates with the gear, return them to the engagement position shown in the figure and retest.  
(If the rack is dislocated, refer to the solution on the back of the parts list.)



3. If it is still failed, refer to 18-2 to open the first book behind the cello and check if the gears are engaged with those of the movement.
4. If gears get stuck with each other, rotate them with fingers to normal.

Complete.