

# *Dream Gift Factory*

MAGIC AMUSEMENT PARK

**EAB01**

**Assembly Instruction**

**ROKR**



### WARNING:

- The product contains small parts and electronic components. Adults should guide and supervise children in the correct use of the product to prevent ingestion or choking.
- Not suitable for children under 3 years old.
- The product shall only be used with a transformer for product or a power supply for it.
- The product shall be used with the power supply supplied, if the transformer is supplied with the product.
- The transformer or power supply is not a model.
- Misuse of transformer can cause electrical shock.
- The power supply used with the electric toy shall be regularly examined for damage to the supply cord, plug, enclosure or other parts, and in the event of damage, it shall not be used until the damage has been repaired.
- Do not connect the wire to output socket.
- The product is not to be connected to more than the recommended number of power supplies.
- The motor may be a hot component. Do not touch it to avoid burns while operating.
- This product is only to be connected to equipment of Class II.
- This product does not need liquid cleaning, and please clean the product with clean soft cloth.
- This product has hazardous sharp functional edges or hazardous sharp functional points, has the danger of being gored, please play it under the wardship of adult.
- The instruction must be retained since it contains important information.

### NOTICE:

- Children should be accompanied by adults while assembling.
- Please read the instructions carefully before assembly to confirm that the parts are not damaged or missing.
- This product needs to be made with some auxiliary tools. Please select it reasonably to avoid injury.
- Please carefully cut the parts and make sure they are firmly pasted when using glue or tape.
- Please install the electronic components correctly and test whether the circuit is normal after completion.
- Check each part before assembly. If the part is damaged, fix it well before assembly.

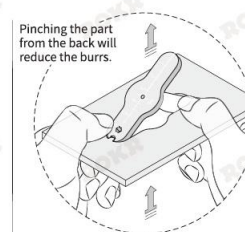
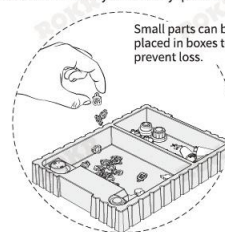
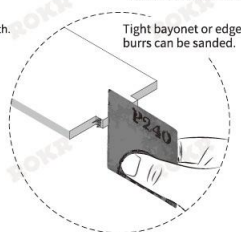
- Please don't clean this product with chemical cleaners: alcohol, ammonia water, glass cleaner, etc.
- Please clean the product with clean soft cloth, and sand the board burr lightly with sandpaper.
- Please keep the product away from substances flammable and humid environments to prevent damage.

### \*CUSTOMER SERVICE

ROKR Facebook: @rokrofficial Email: service@robotime.com  
Please contact us on Facebook or email if you have any questions.




Product Display




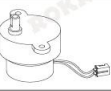

### FAQs:

Problem	Reason	Solution
1. How to solve the fracture of parts?	1. Parts are fragile and applied with too much force. 2. Some parts are marked with pressure application point. Do not press non-pressure application point or at the end of the long pieces.	1. Take off the pieces carefully. 2. Some fragile pieces have spare ones to replace. 3. Contact our customer service for free replacement parts. 4. Adhesive can be used if the decorative part (non-drive function part) breaks.
2. It's hard to assemble parts. What should I do?	1. Some parts related to transmission will be slightly tight, and tools can be used to assist pressing.	1. Check for assembling errors. 2. Press with the tool.

**Part list** (Tips: suggest to put the parts in a box to prevent loss.) \*Due to customs policy in international shipping, the wax or glue or batteries may not be included. Please prepare them yourself.

Bag No.1										Bag No.2
Item	Red sheet	Synchronous belt	Insulating glue	Steel shaft	Steel shaft	Steel shaft	M1.4 screw	M2 screw	M3 screw	Power port
Item number	P1	P2	P3	P4	P5	P6	P7	P8	P9	P10
Illustration										
Quantity	1	1	1	1	1	1	4	2	3	1

Bag No.2											
Item	Long light string	Short light string	Shaft sleeve	Insert screw	M2 screw	Screwdriver	Pliers	Conveyor belt	Lamp panel	Circuit board	Loudspeaker
Item number	P11	P12	P13	P14	P15	P16	P17	P18	P19	P20	P21
Illustration											
Quantity	1	1	10	12	6	1	1	1	1	1	1

Item	Motor	Wax
Item number	P22	P23
Illustration		
Quantity	1	1

#### Icon illustration

U9+ Part U9 has spare parts.

3 P20 Part P20 in Bag No. 3

Special attention in assembly

Wax the yellow parts

Printed side

Blank side

Complete 2 same parts

Remove protective film

1 Step 1

2 Step 2

Ensure the parts running smoothly

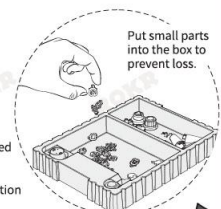
Flush with the end

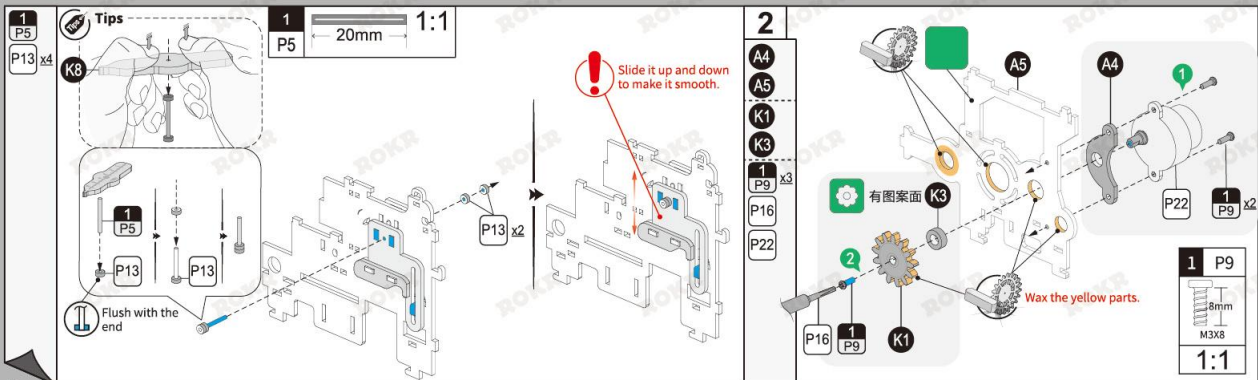
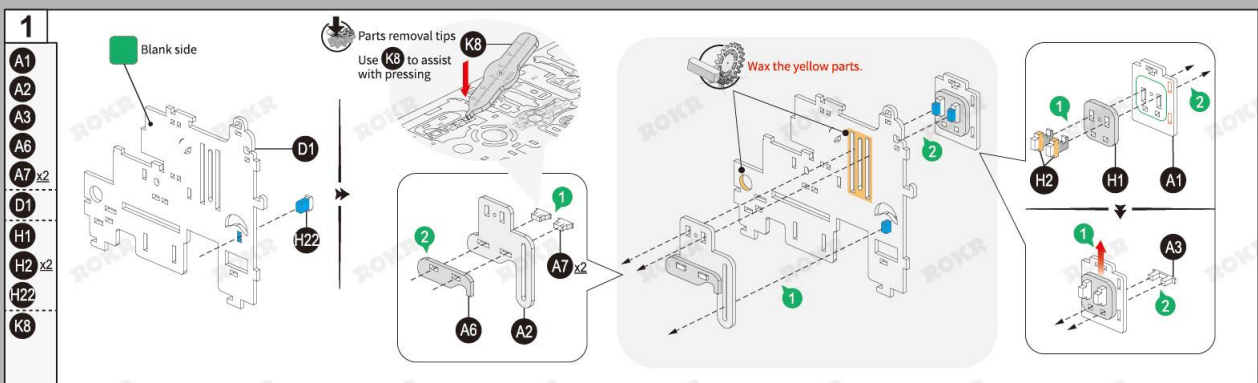
Parts removal tips

Assembly tips

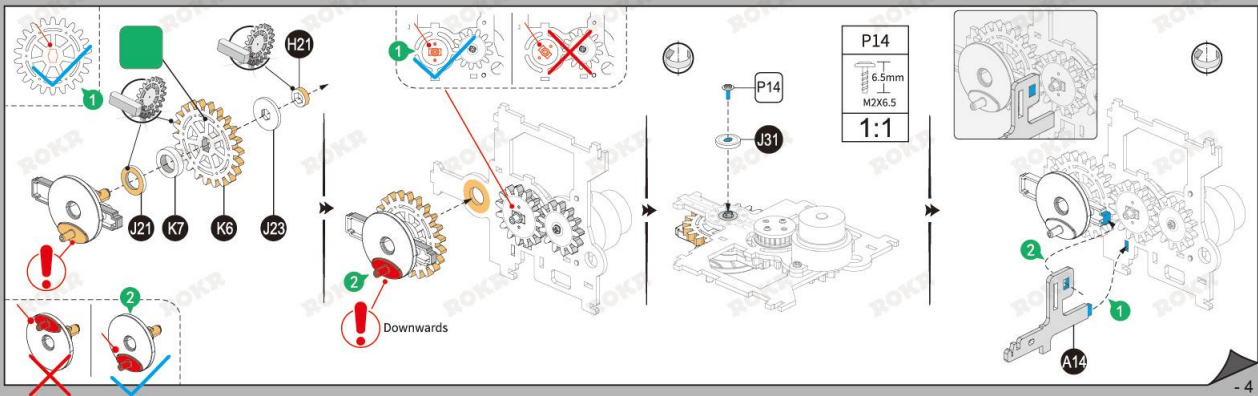
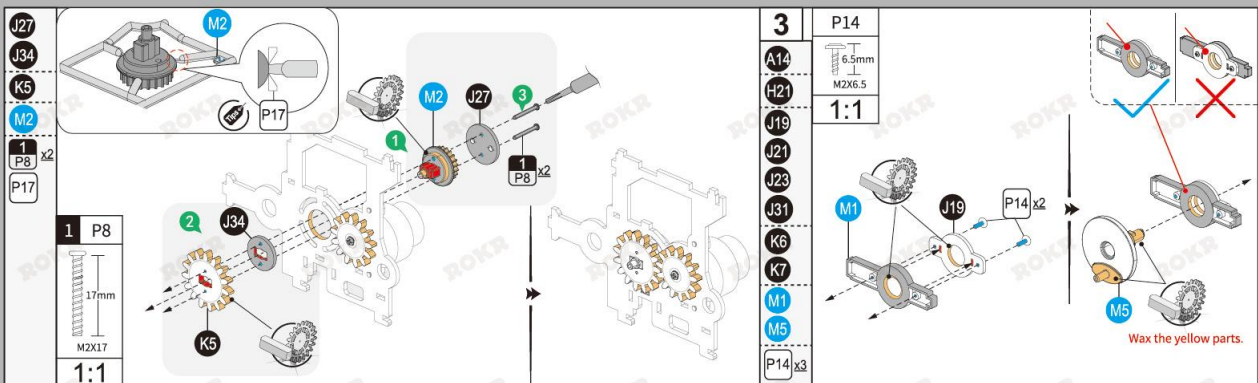
Perspective changed

Ensure the connection of gears smoothly

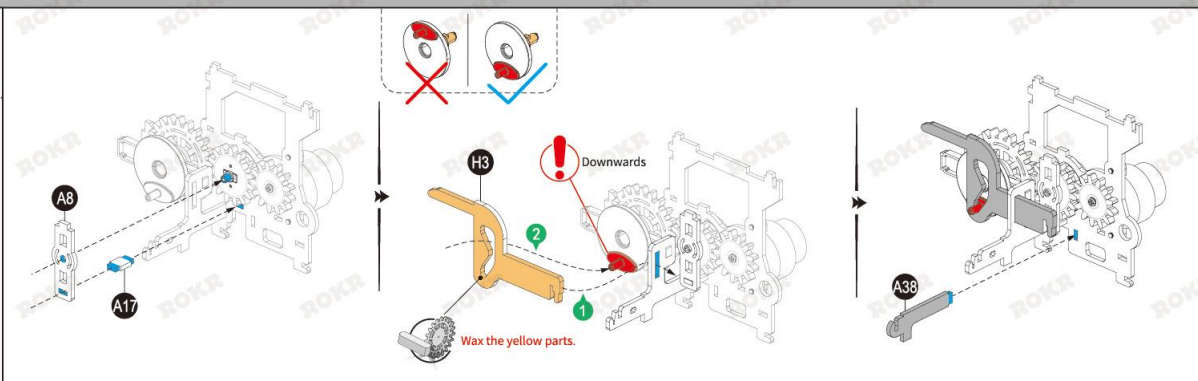








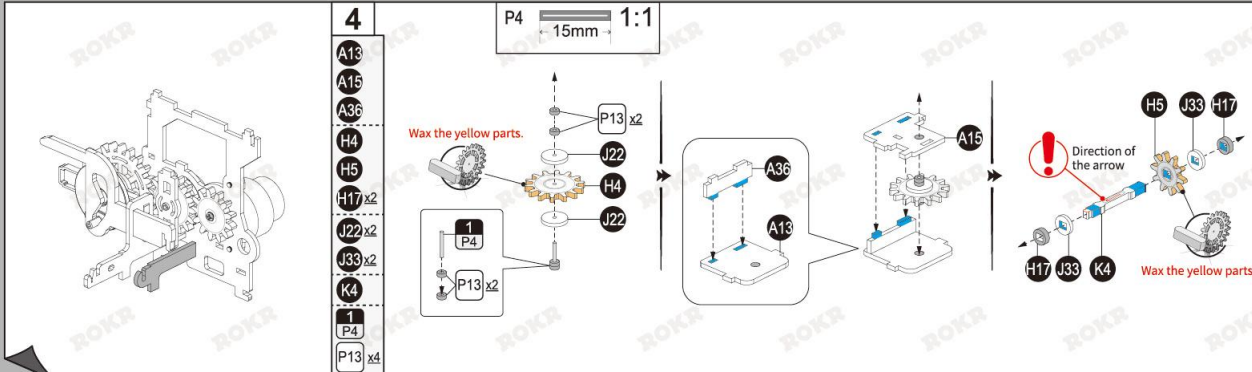
A8  
A17  
A38  
H3

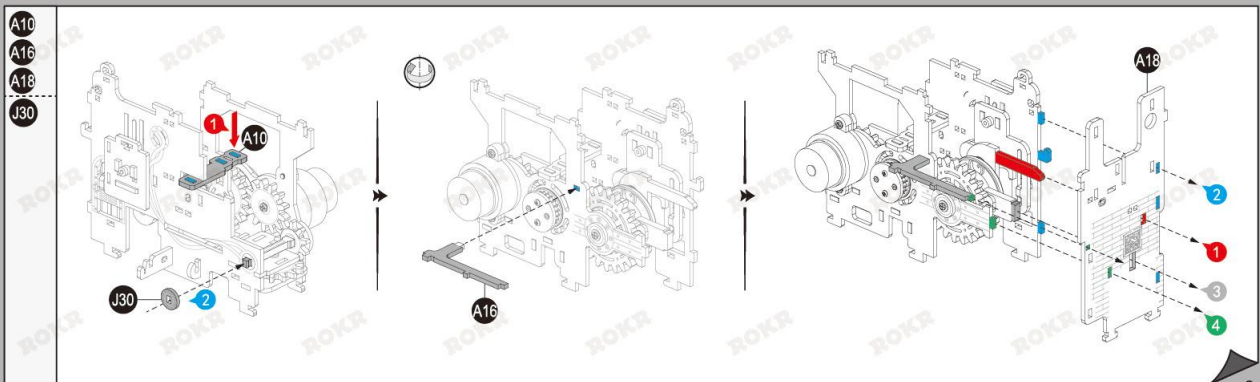
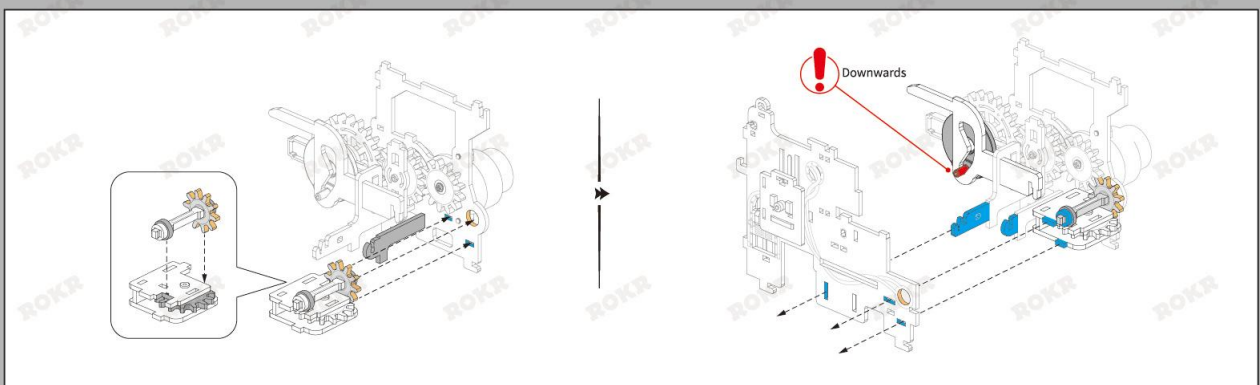


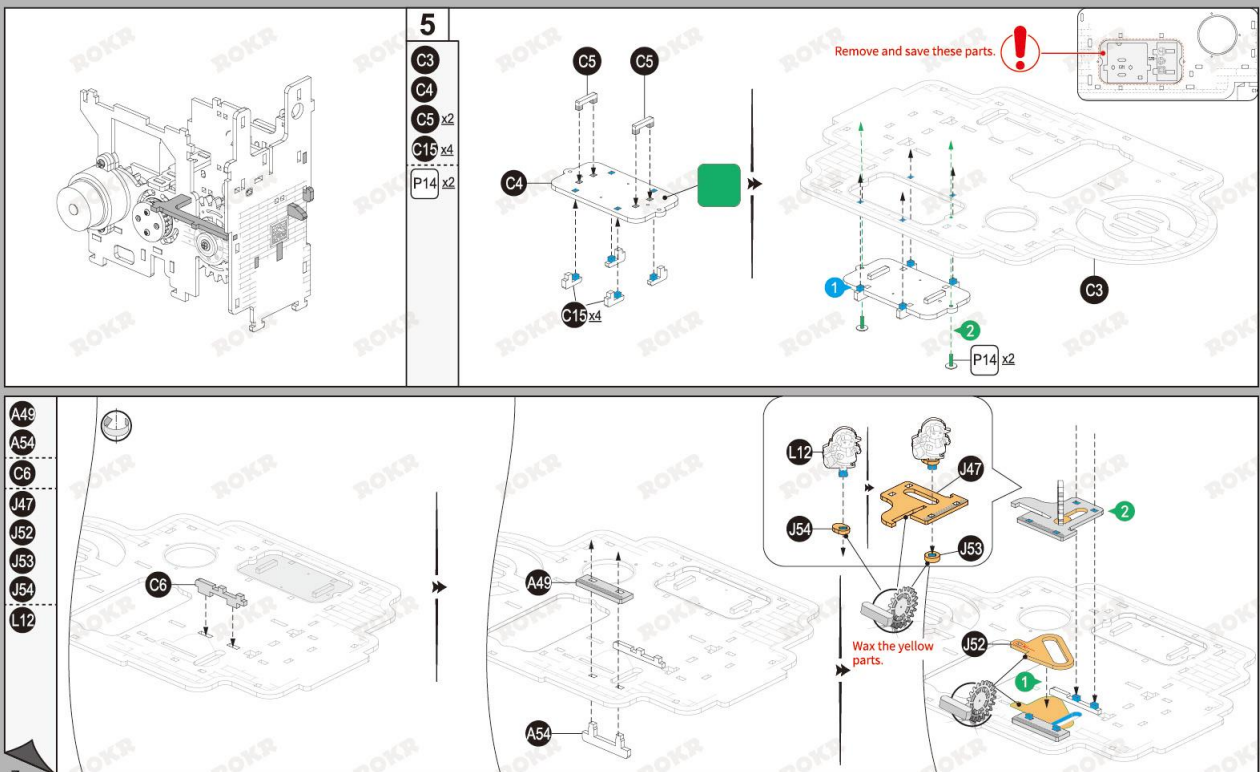
4

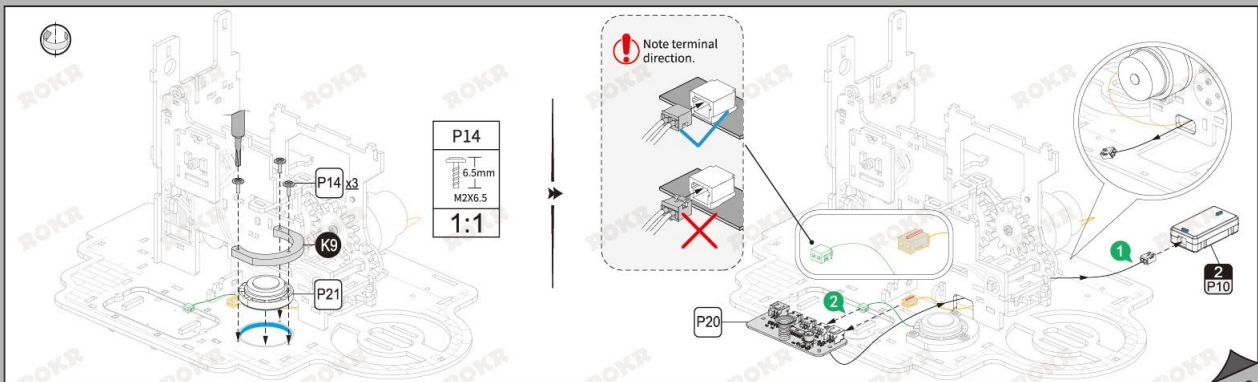
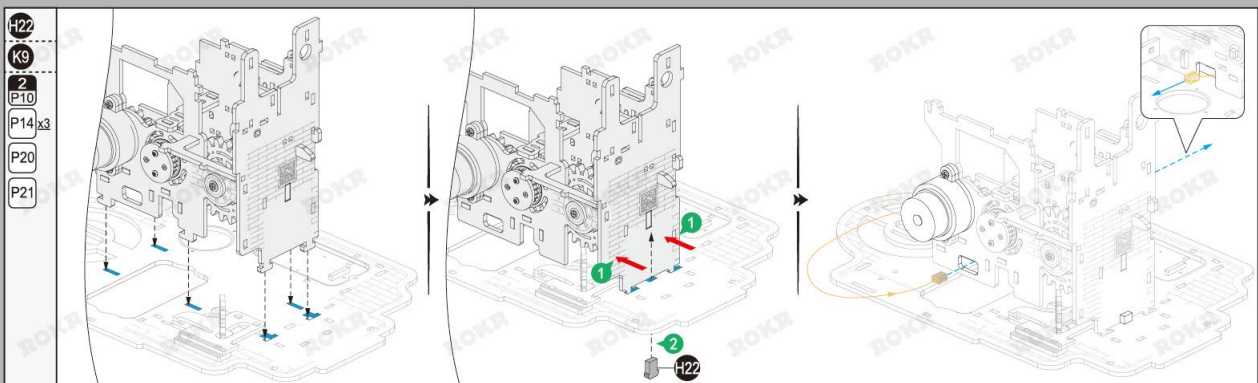
A13  
A15  
A36  
H4  
H5  
H17 x2  
J22 x2  
J33 x2  
K4  
1 P4  
P13 x4

P4 15mm 1:1

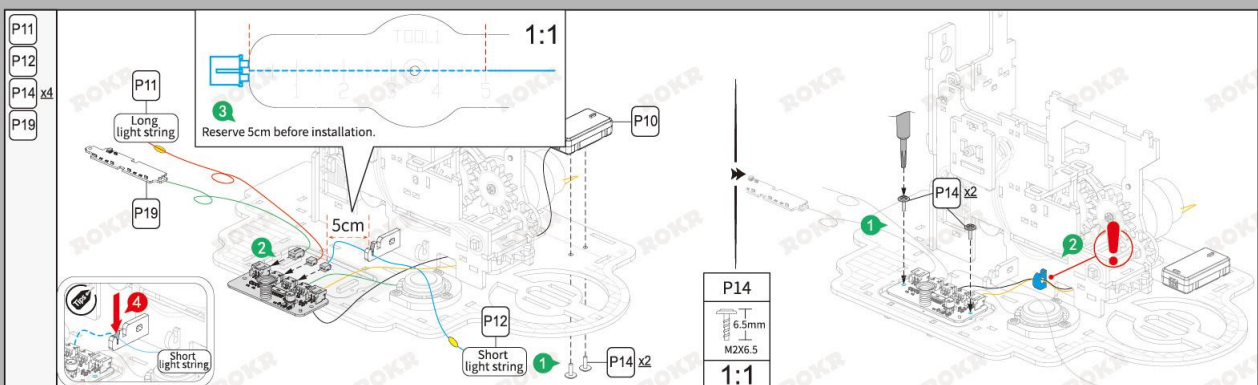












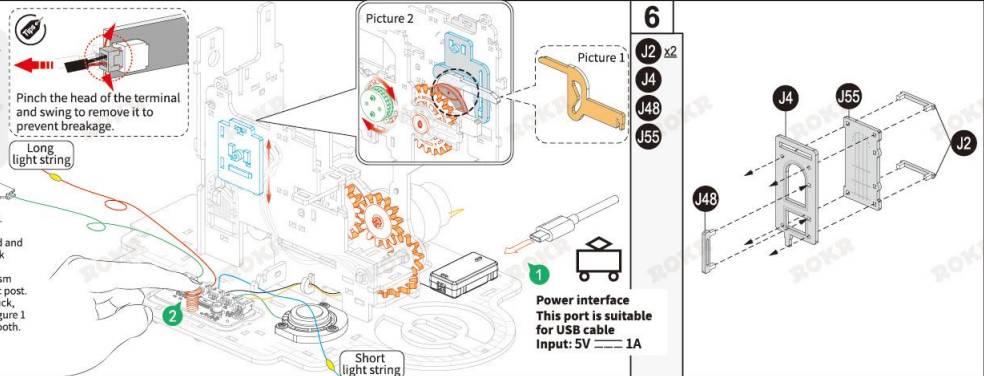
#### Power-on test 1:

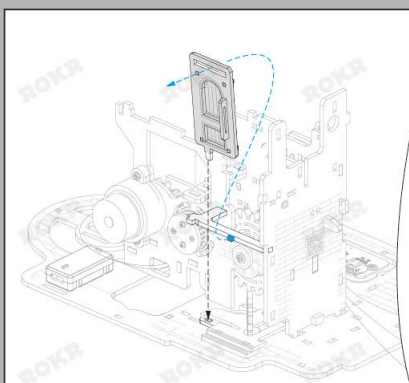
Operate to test:

1. Click to start. The light is on or blinking, the motor operates, and the music plays.
2. Click again. The music stops playing.
3. Press and hold to power off.
4. Automatic stop: the motor music will stop automatically after 10 minutes, and the light will be automatically extinguished after 1 hour.
5. Protect the circuit from damage. The program will be triggered when the gear set is harsh for the first time, click to restart.

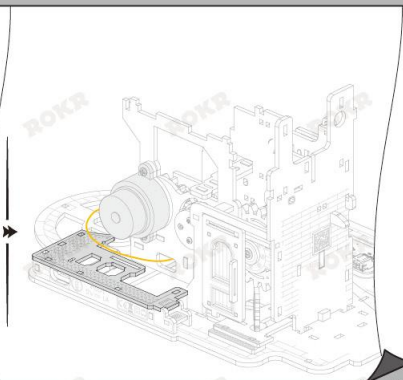
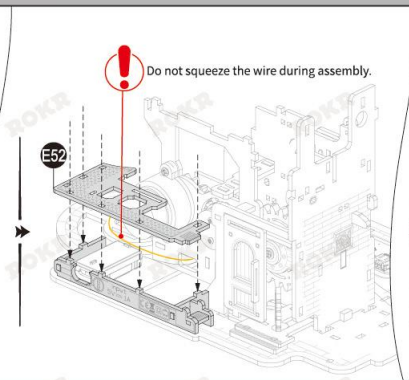
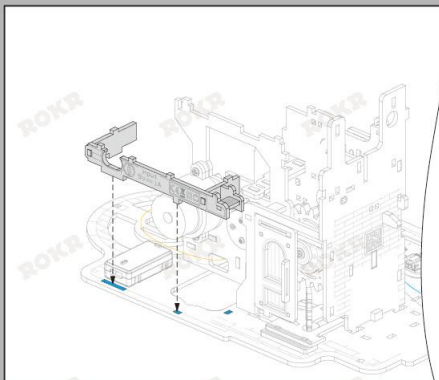
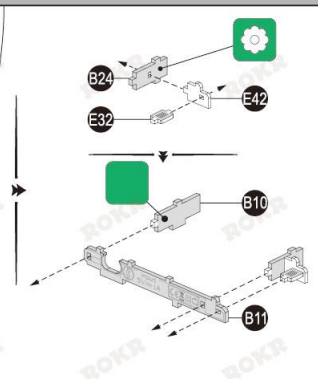
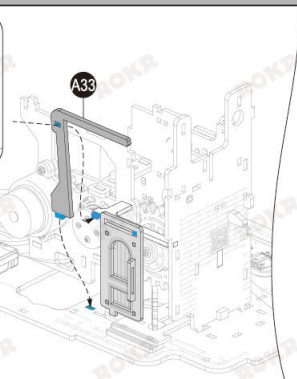
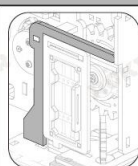
#### Troubleshooting:

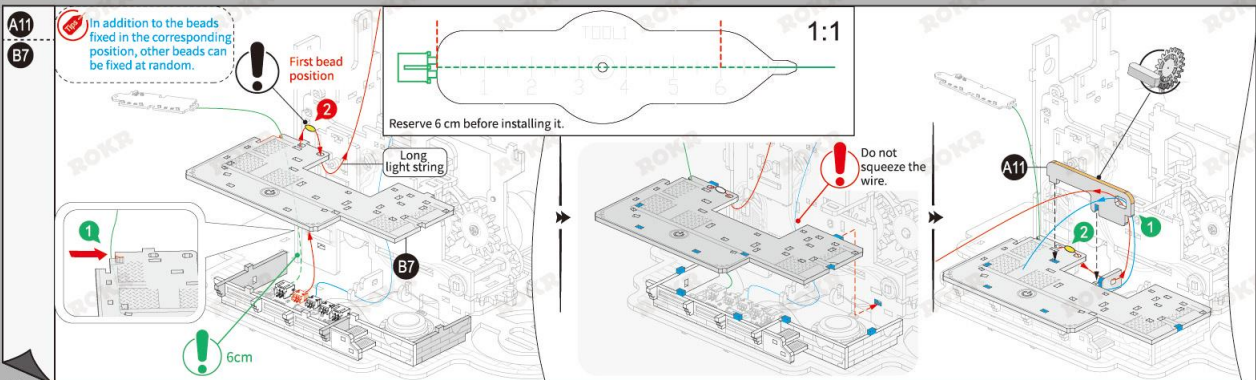
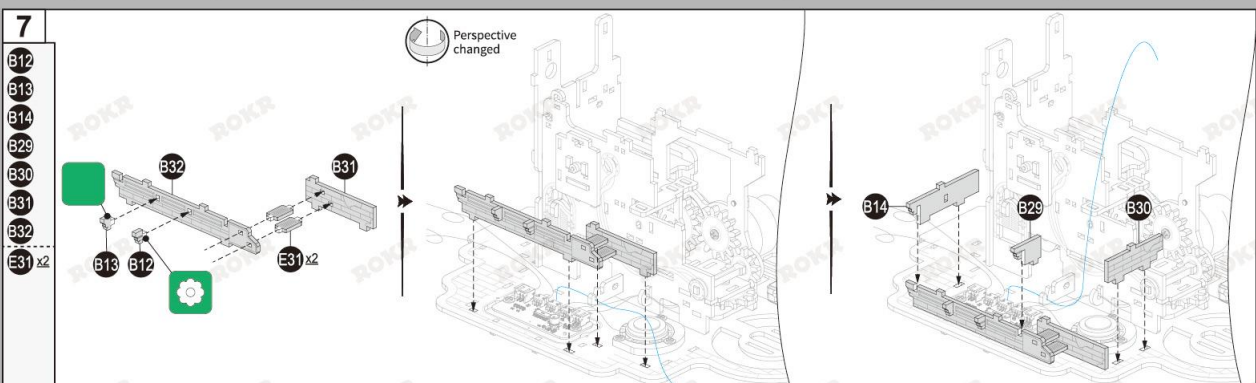
1. Check whether the terminal is inserted incorrectly.
2. Check whether the gear is sufficiently waxed.
3. Check if the parts in Figure 1 are sufficiently waxed and use a screwdriver to pick them up and down to check whether they are stuck.
4. Check whether the position of the lifting mechanism marked in blue in Figure 2 is above the brown plastic post.
5. Check if the transmission gear marked in red is stuck, click to start and turn the gear marked in green in Figure 1 clockwise to make the transmission mechanism smooth.

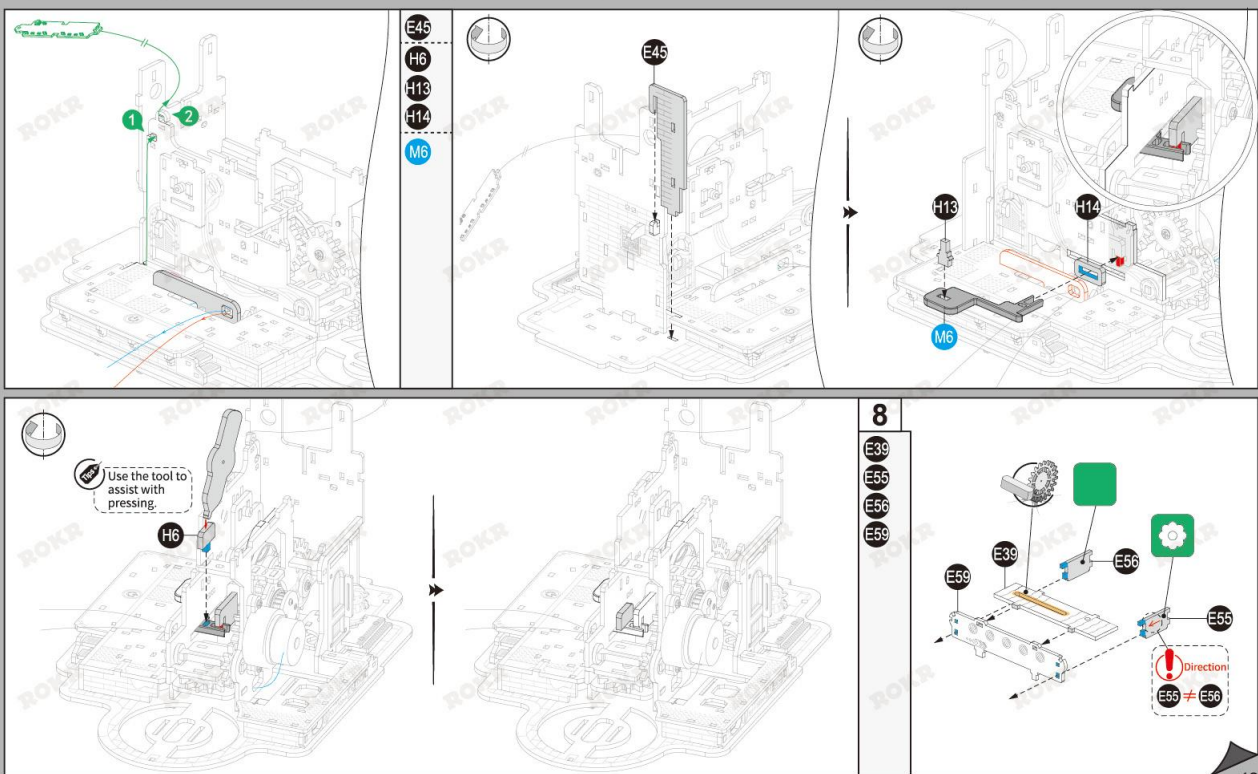


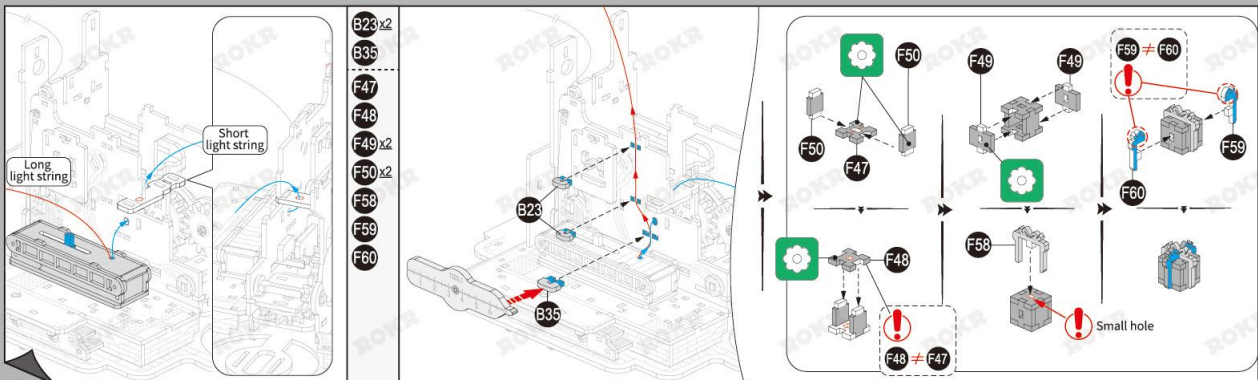
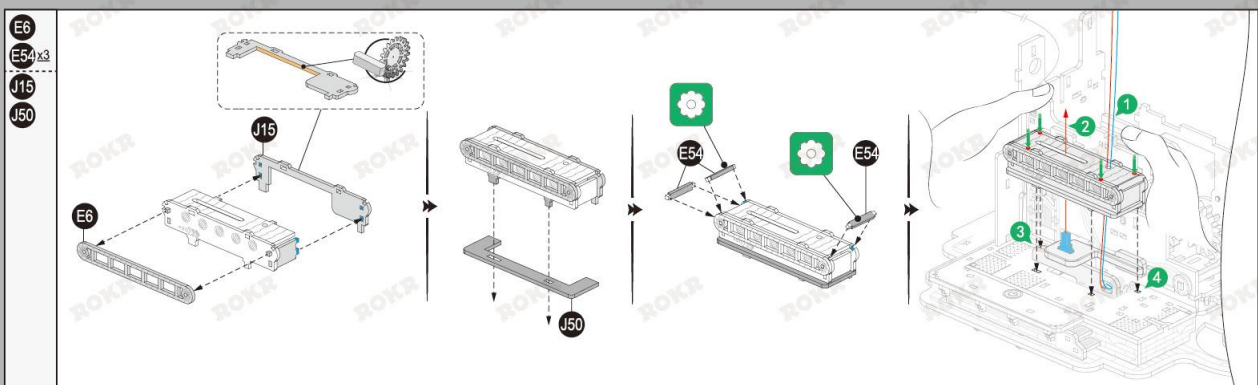


A33  
B10  
B11  
B24  
E32  
E42  
E52

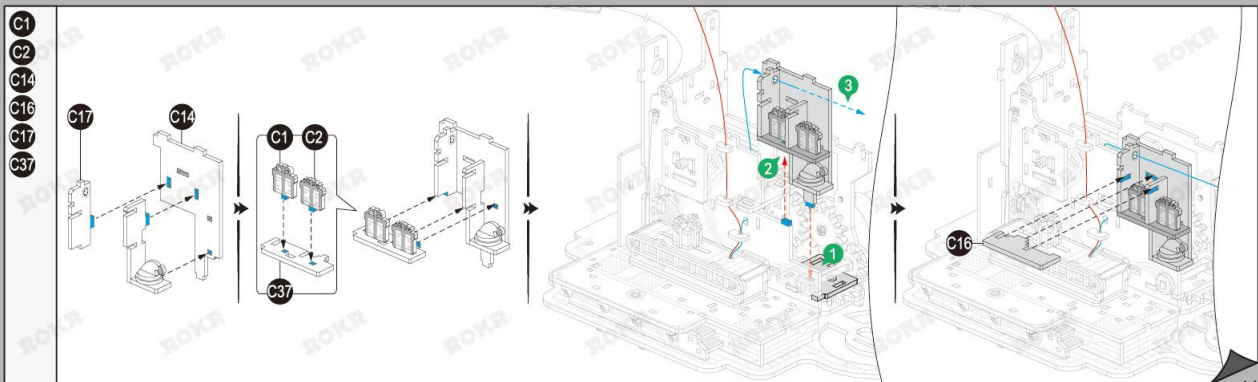
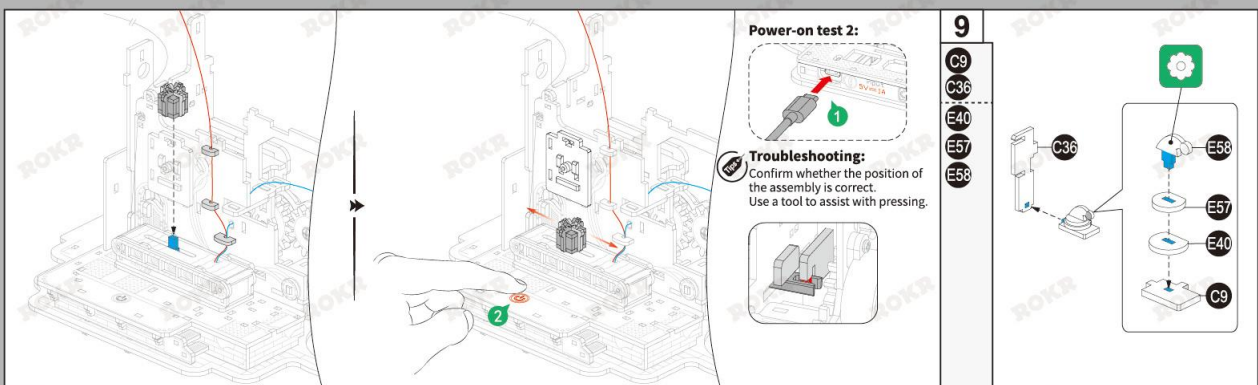


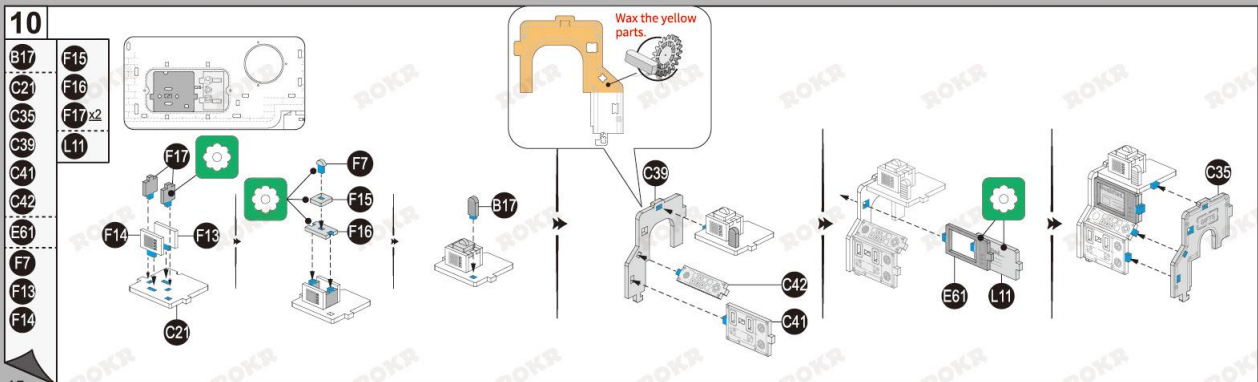
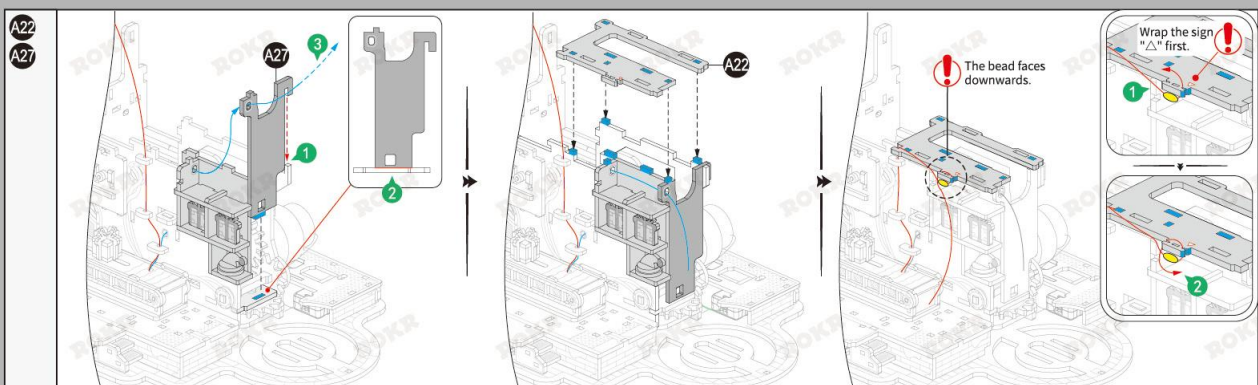


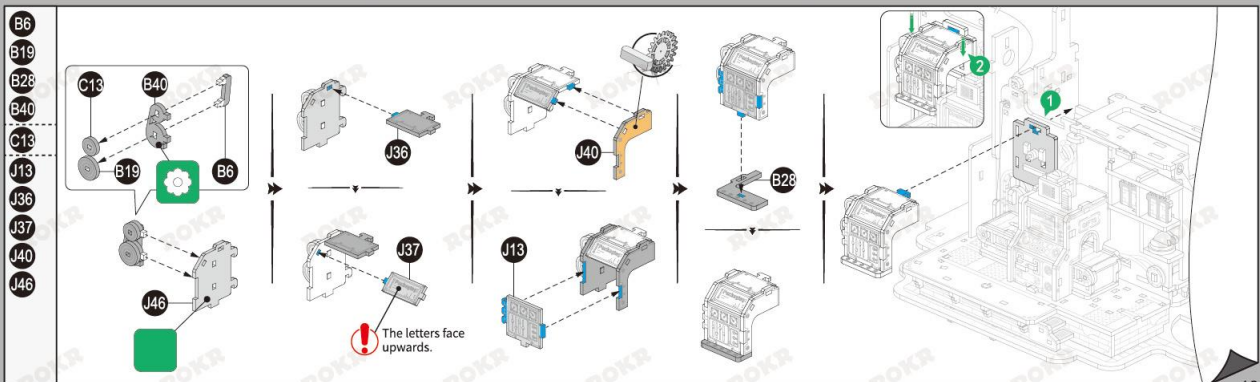
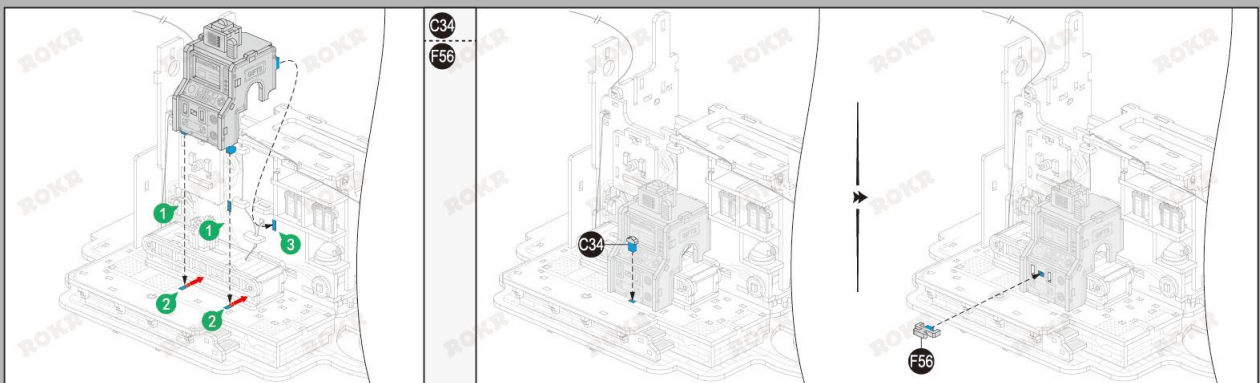


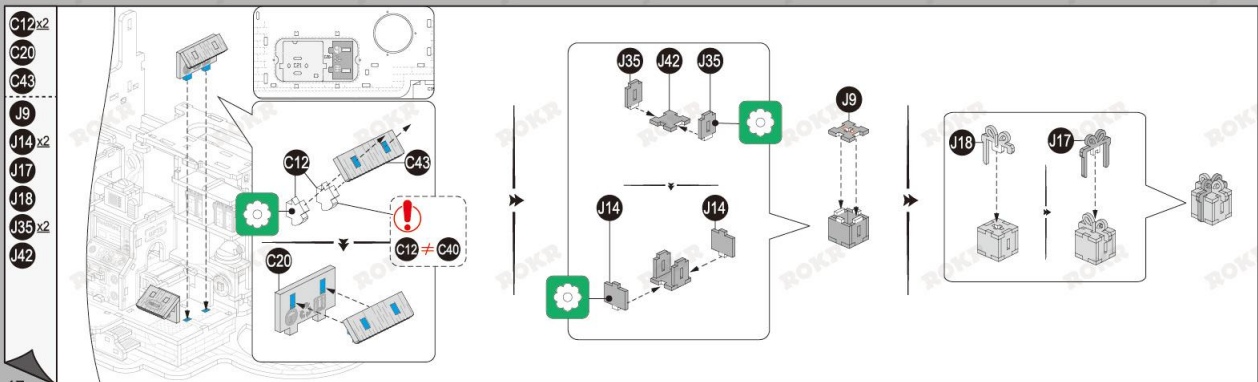
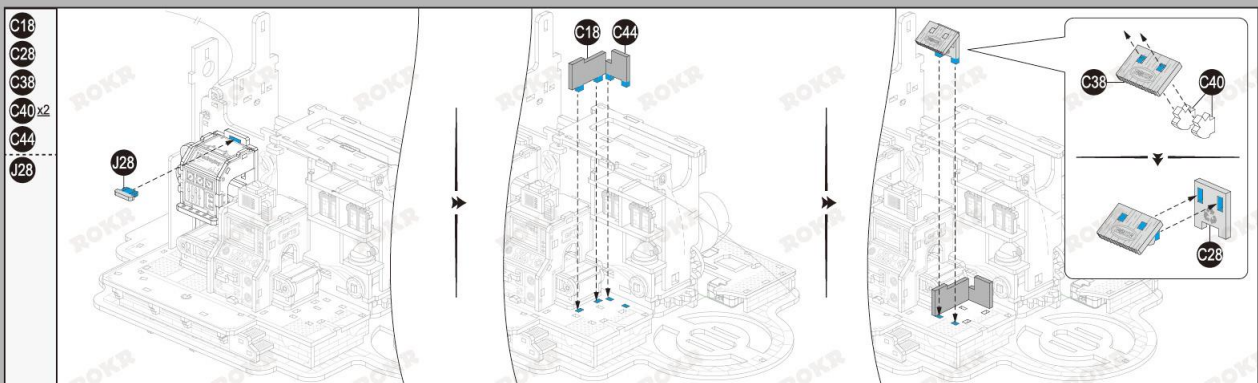




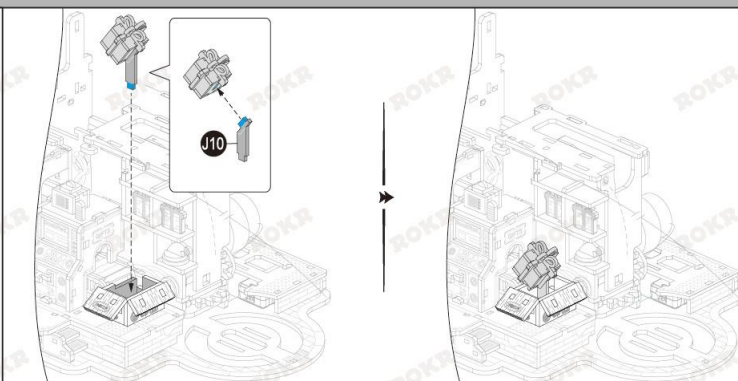






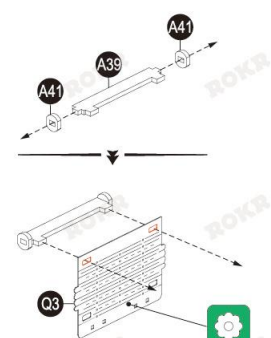


J10

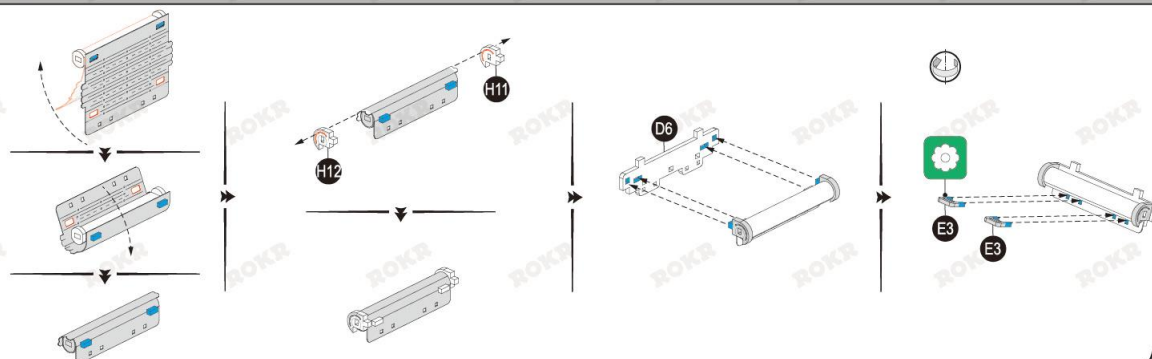


11

A39  
A41 x2  
Q3

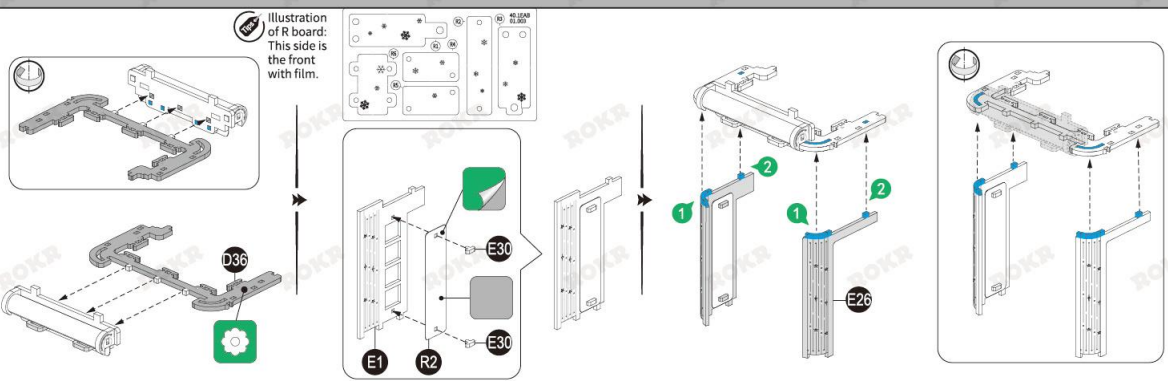


D6  
E3 x2  
H11  
H12

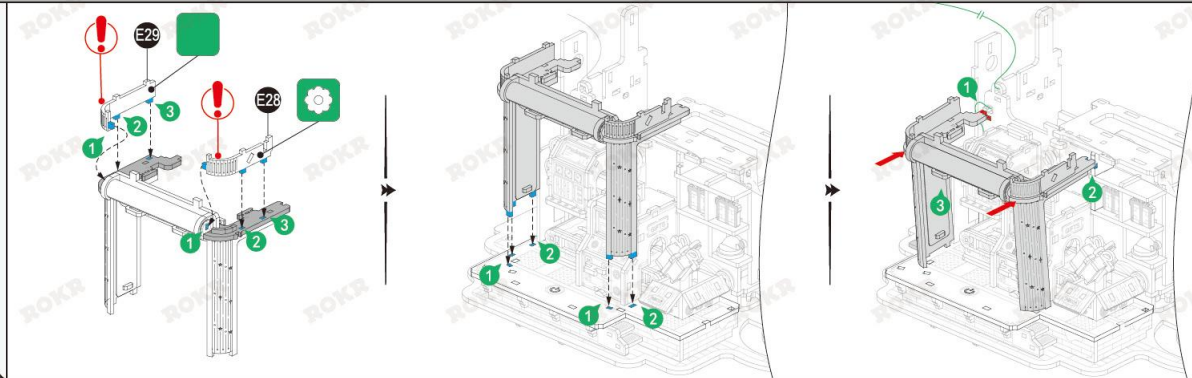


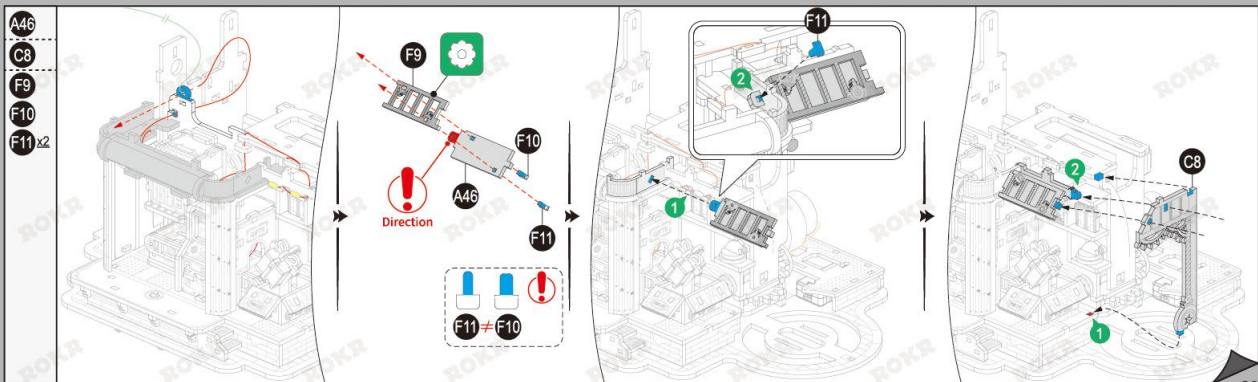
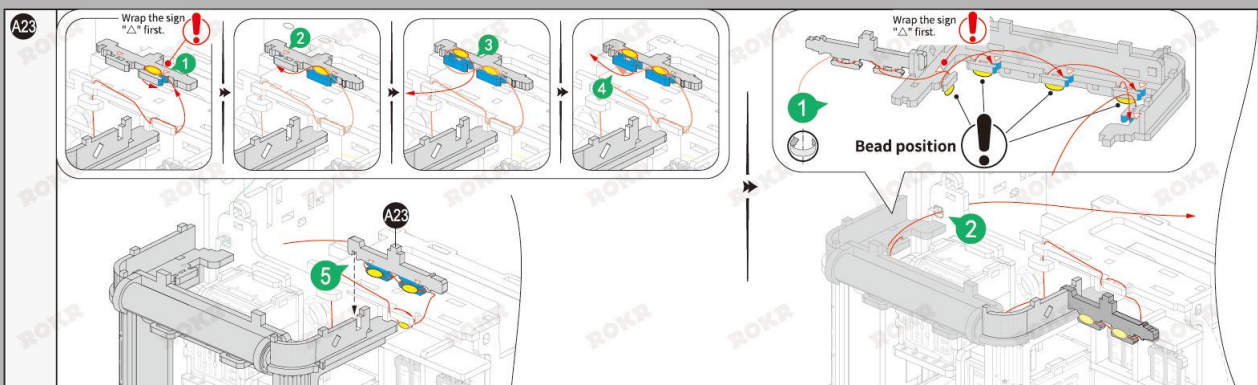


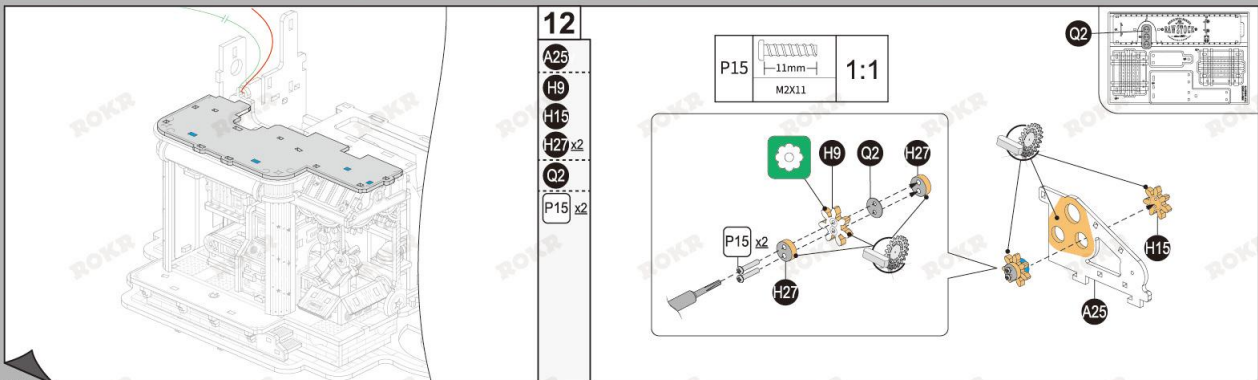
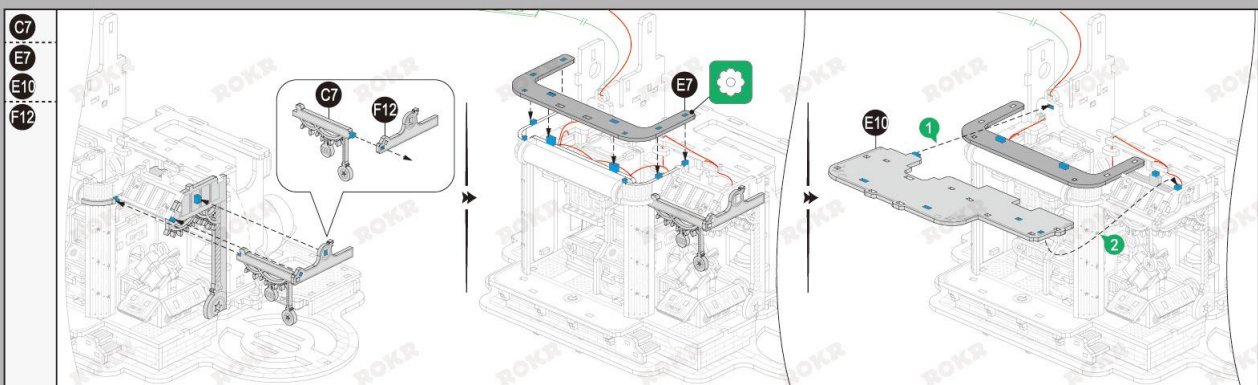
D36  
E1  
E26  
E30 x2  
R2

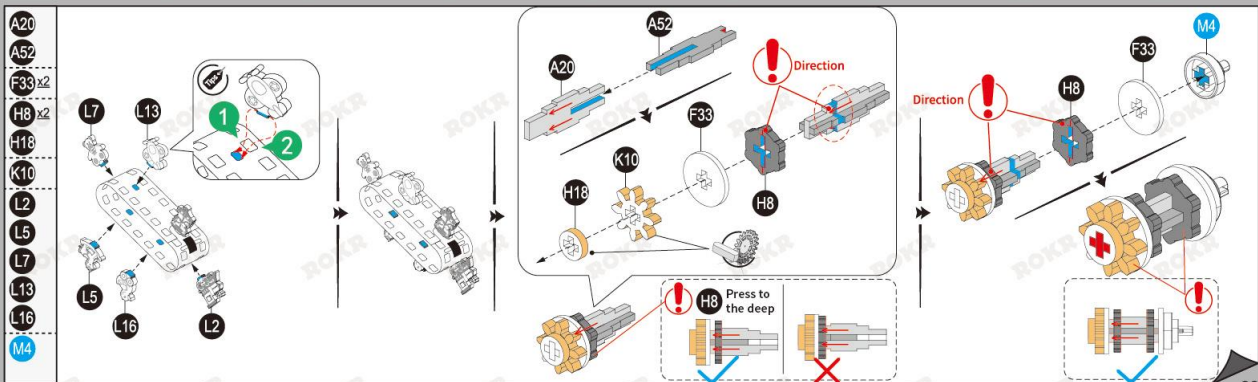
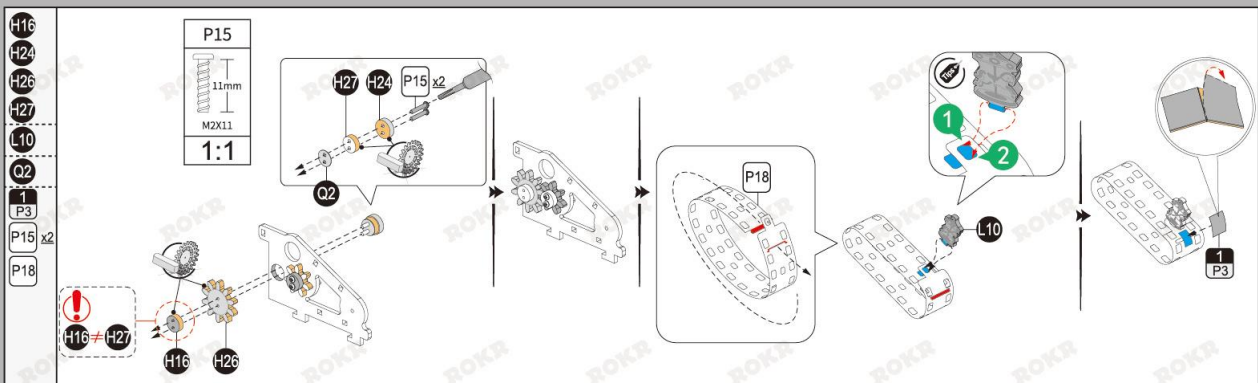


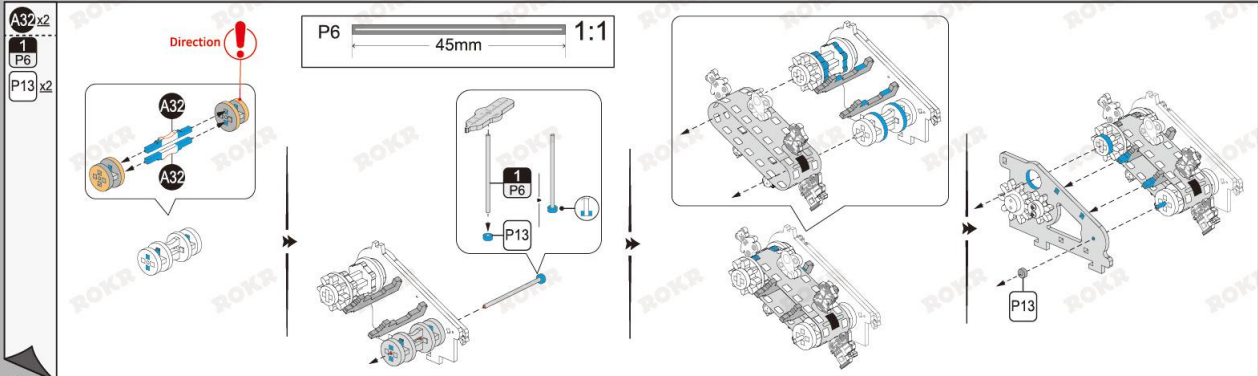
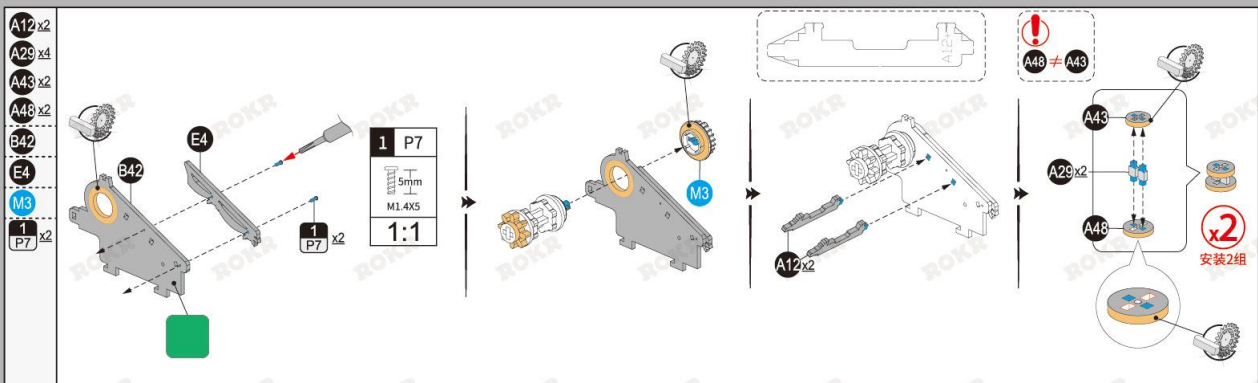
E28  
E29



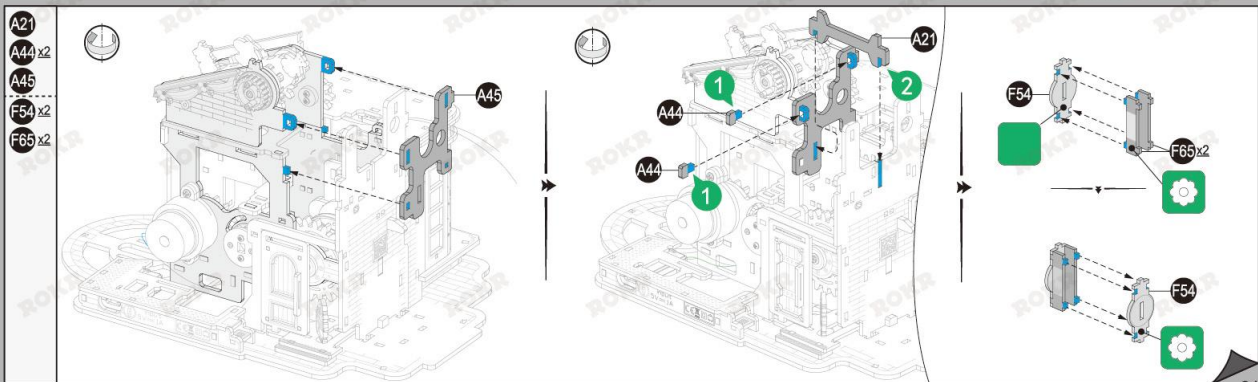
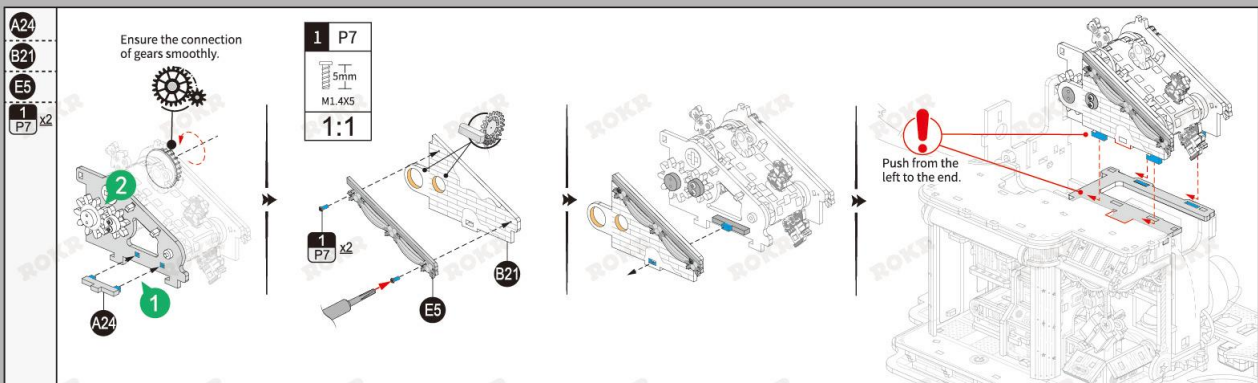


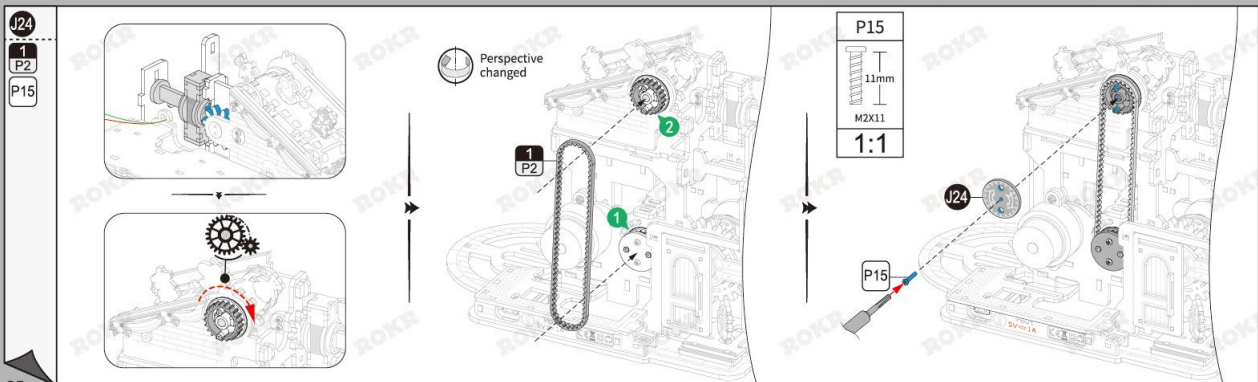
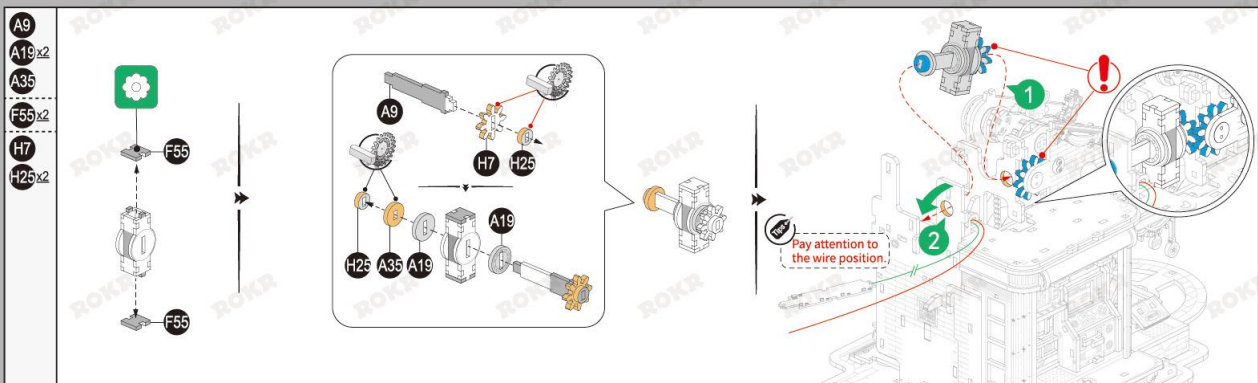




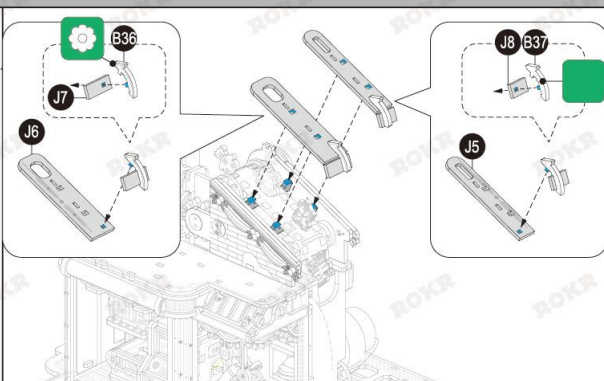




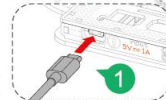




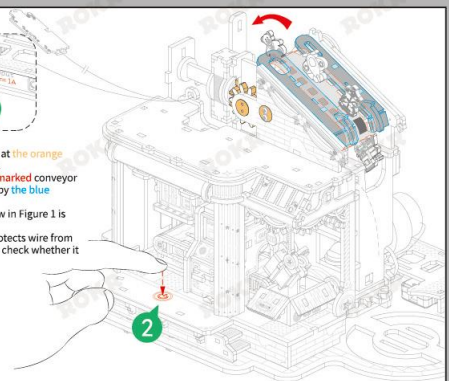
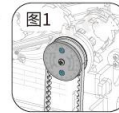
B36  
B37  
J6  
J7  
J8



#### Power-on test 3:

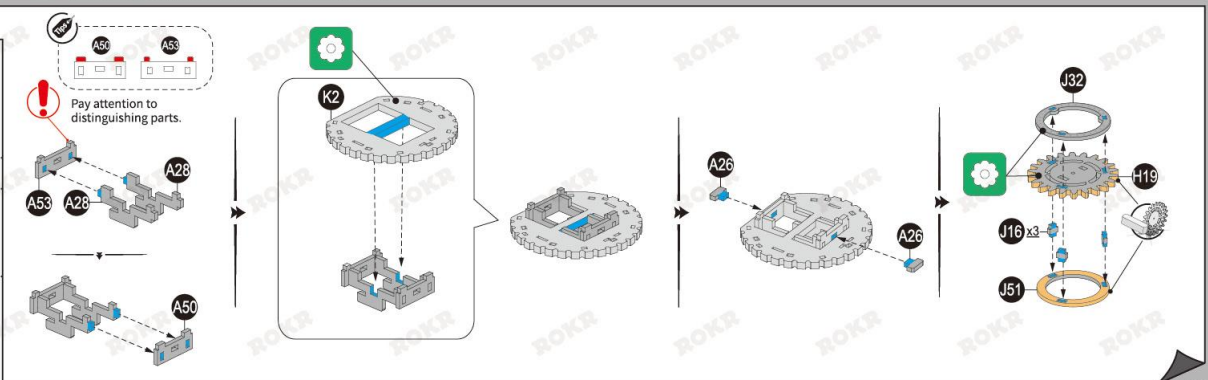


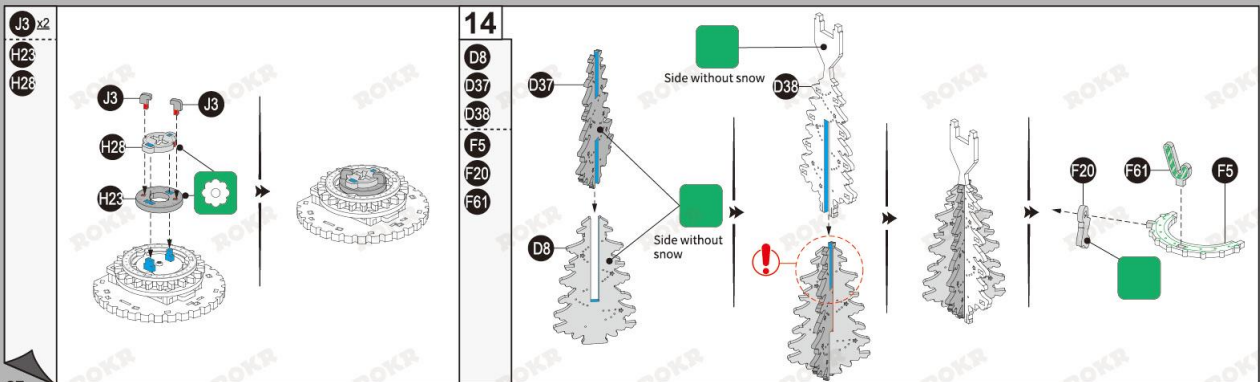
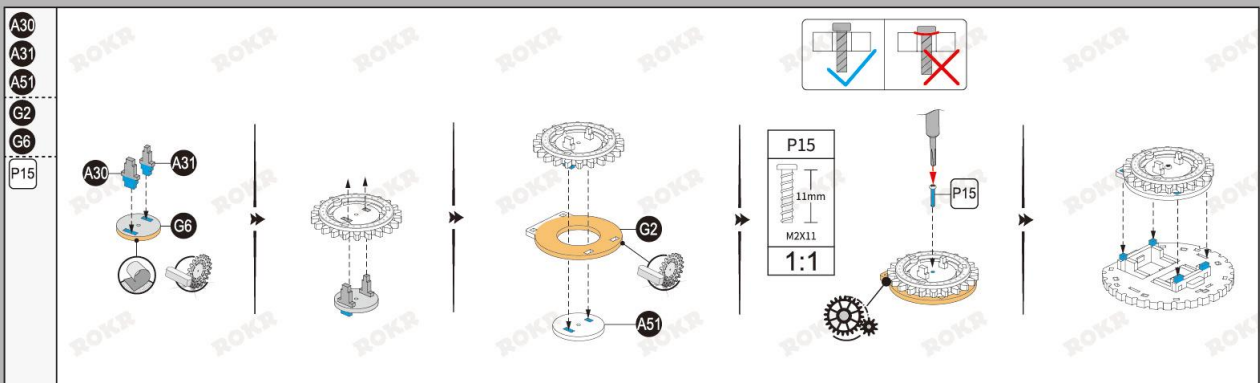
- Troubleshooting:**
1. Check whether the gear at the orange main is sufficiently waxed.
  2. Check whether the red marked conveyor belt is pressed too tightly by the blue marked parts.
  3. Check whether the screw in Figure 1 is tilted or loose.
  4. Start the system that protects wire from damage and click again to check whether it can start.

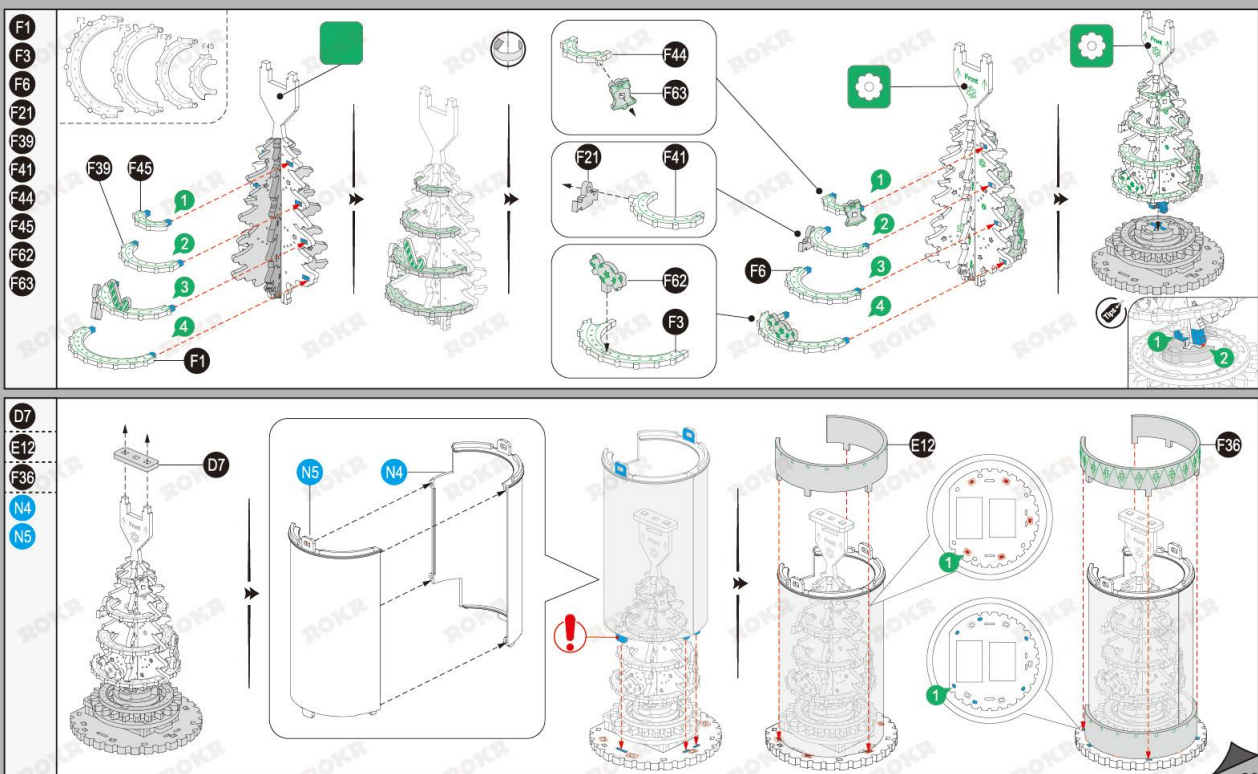


### 13

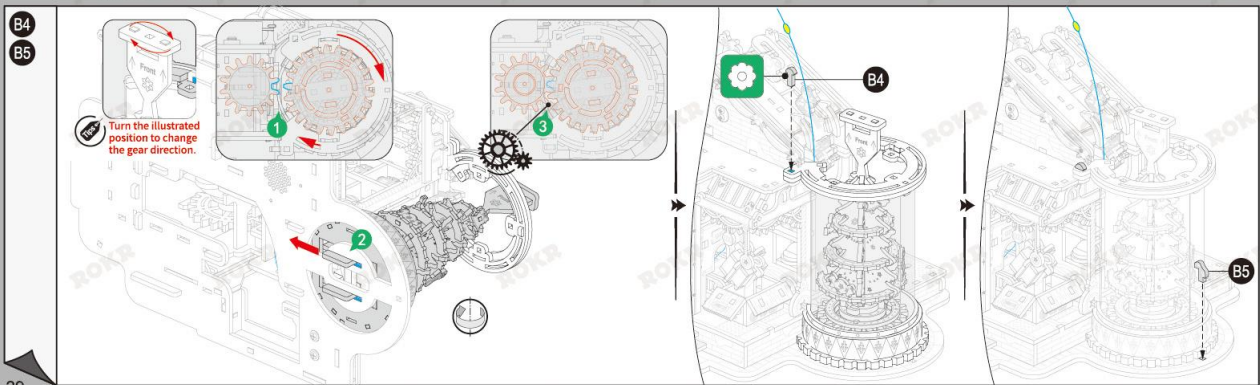
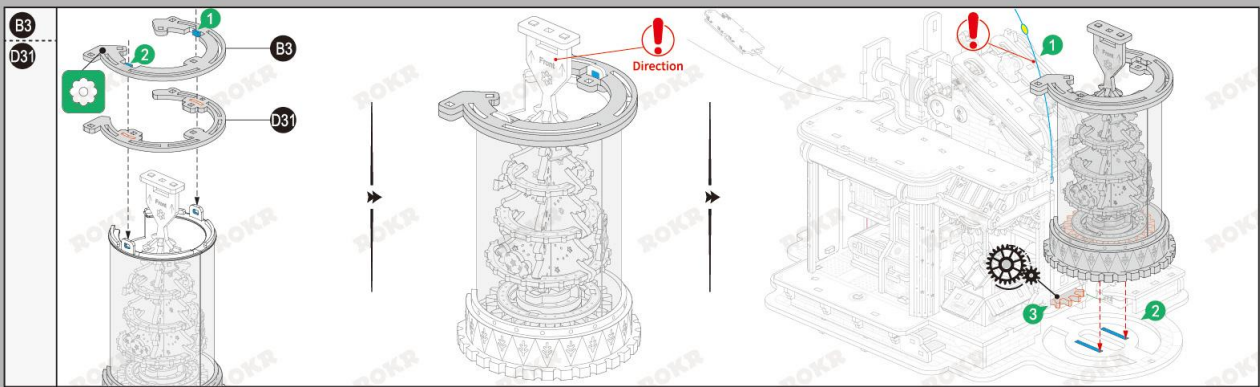
A26 x2  
A28 x2  
A50  
A53  
H19  
J16 x3  
J32  
J51  
K2





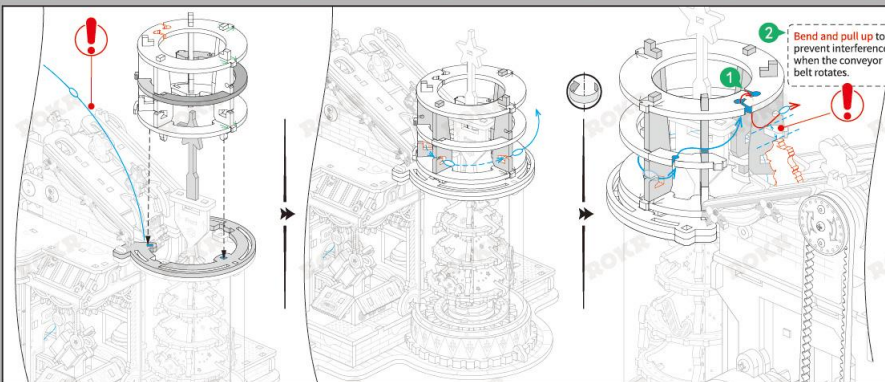
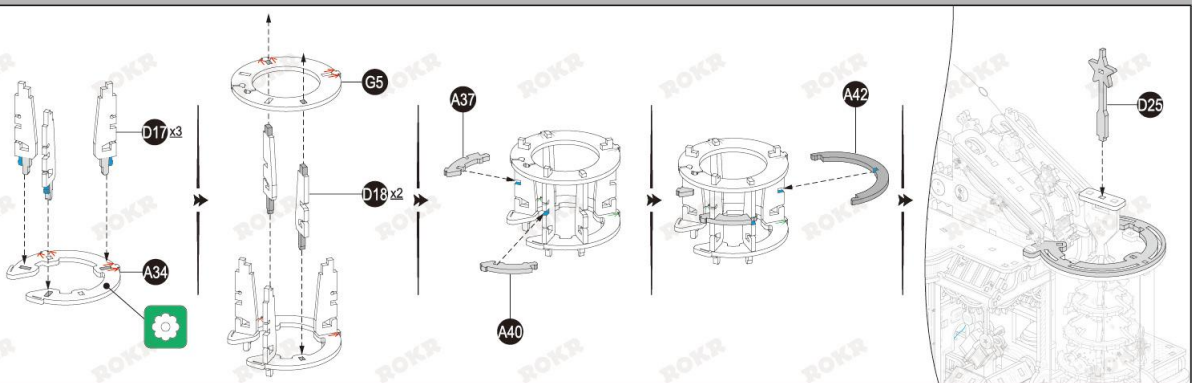






15

A34  
A37  
A40  
A42  
D17 x3  
D18 x2  
D25  
G5



**Tips**

Shape the rest of the wire into a hook shape.

**Special circumstances:** When the wire lamp as shown in Figure 1 is too long, it can be circled several times at the blue limit buckle. Finally, the 2cm should be reserved by using the tool K8.

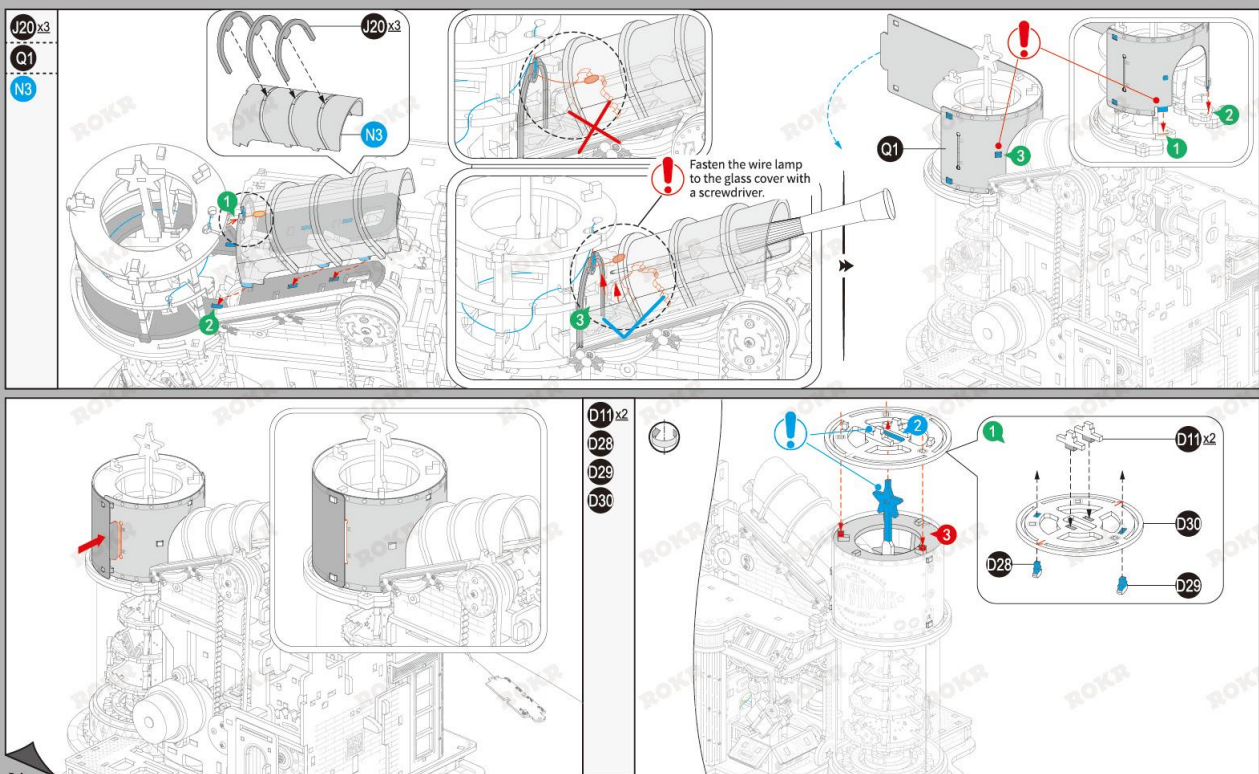
**Picture 1**

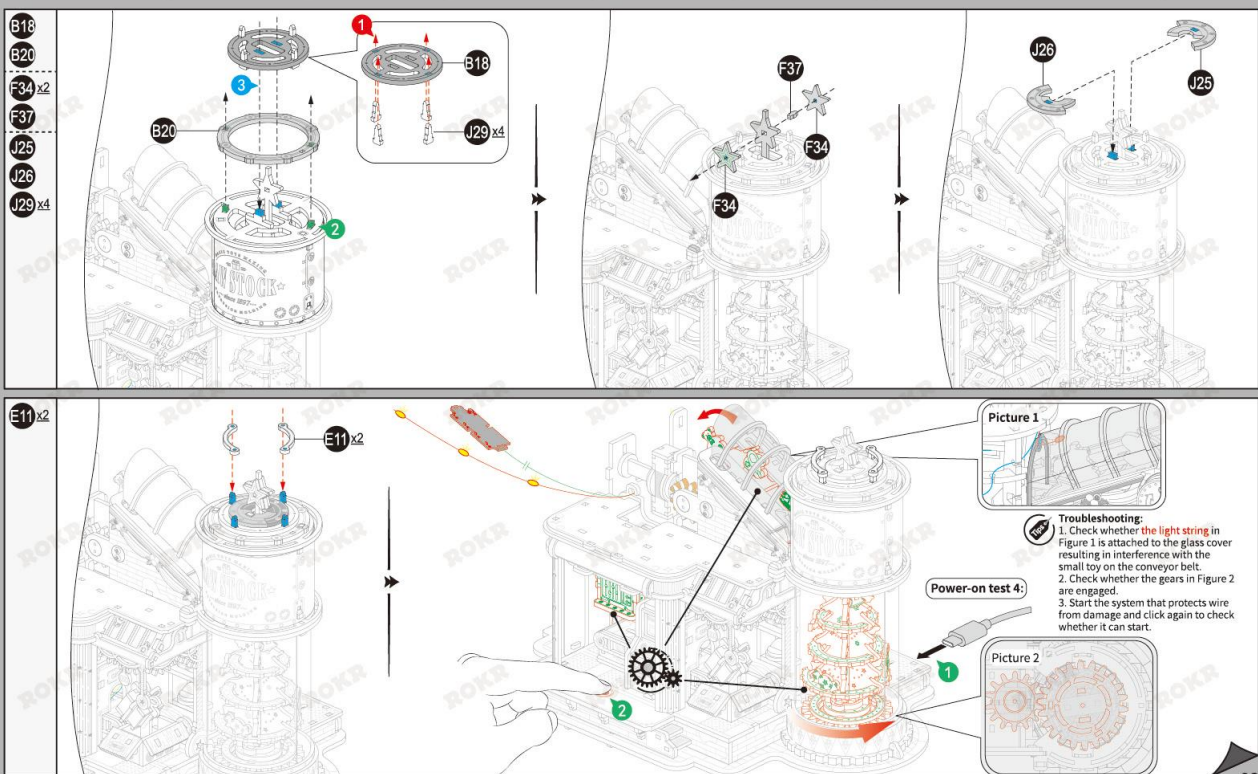
Too long

**Picture 2**

2cm

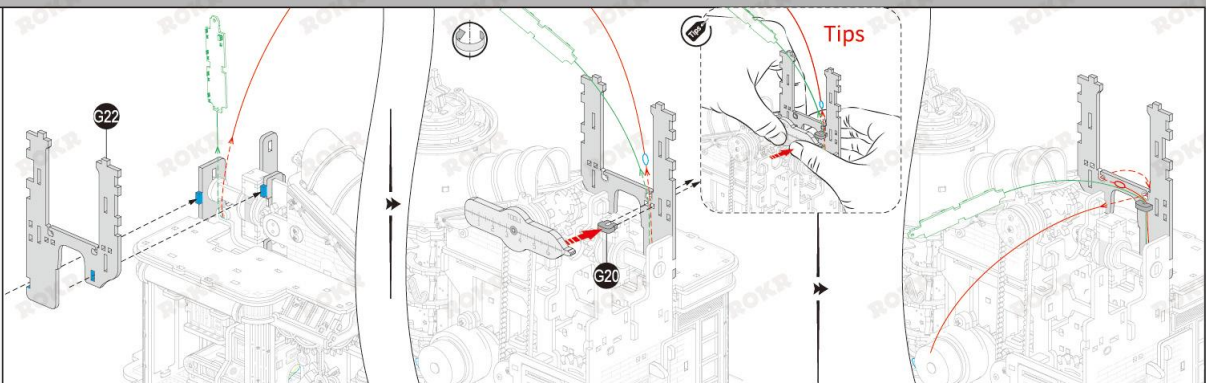
**Solution:** Wrap it for several rounds.



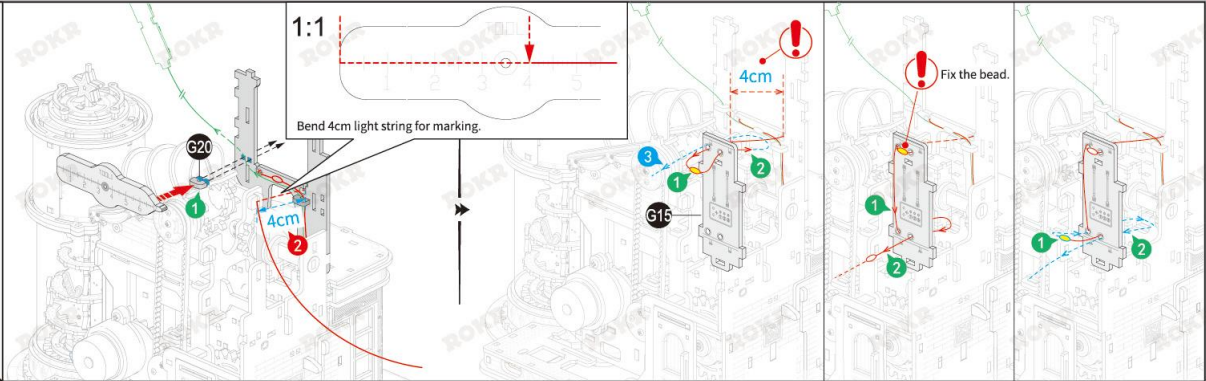




G20  
G22



G15  
G20

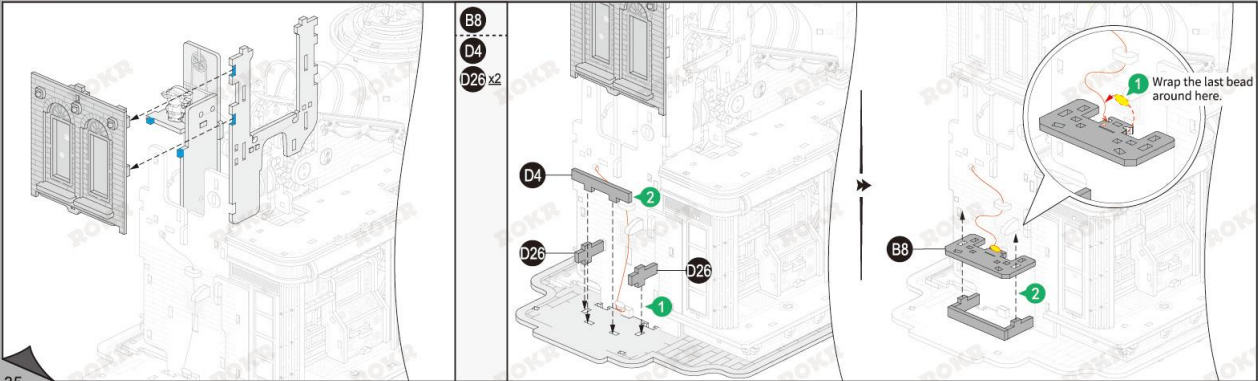
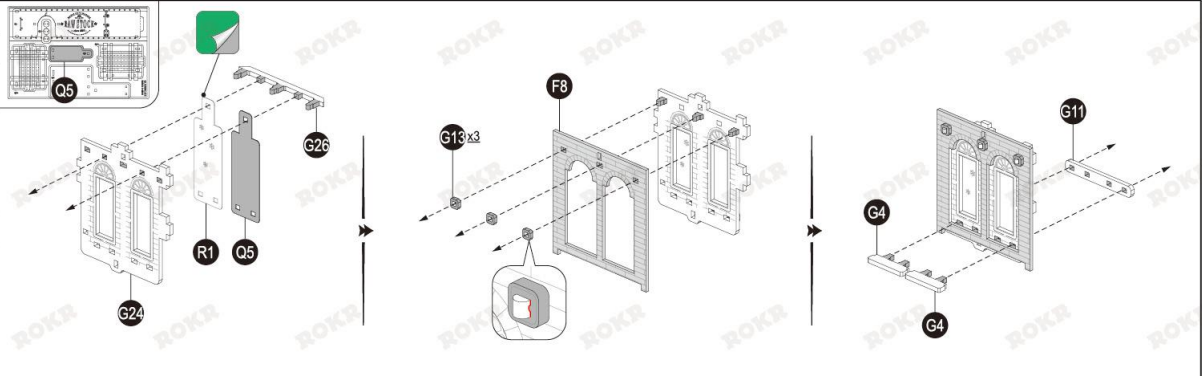




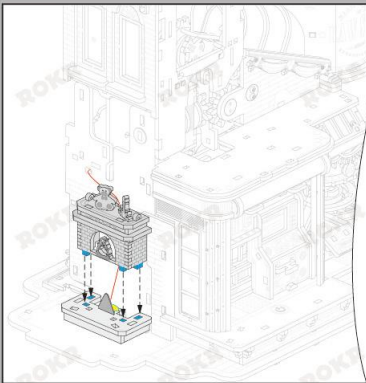
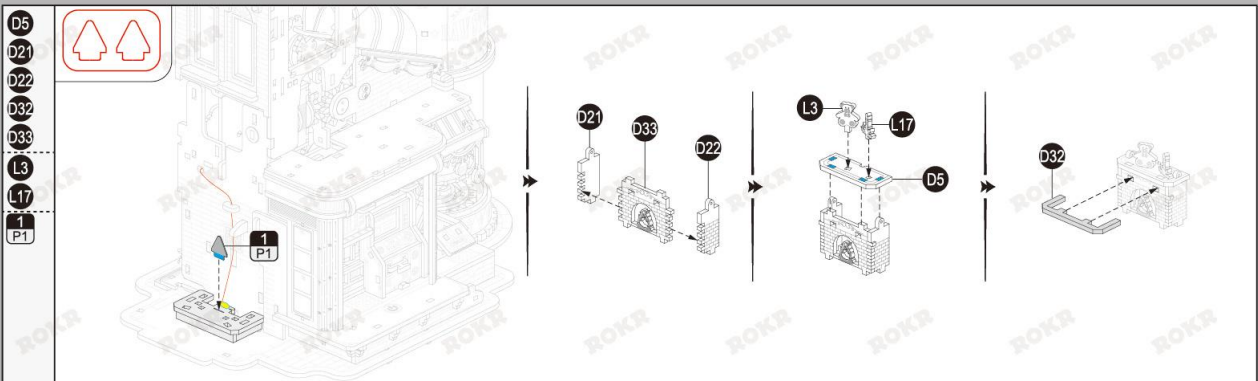


16

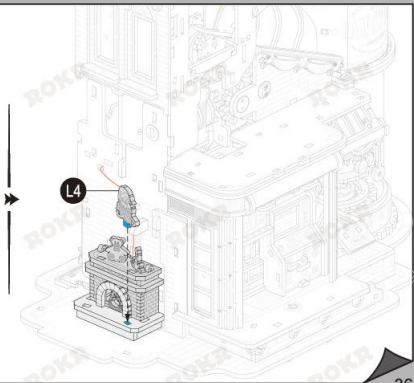
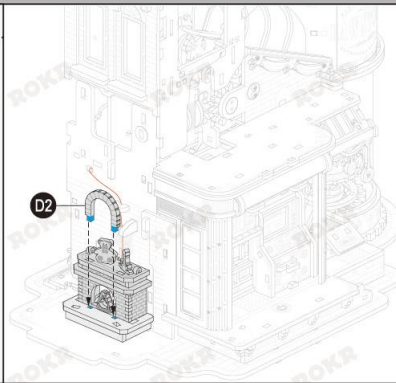
F8  
G4 x2  
G11  
G13 x3  
G24  
G26  
Q5  
R1

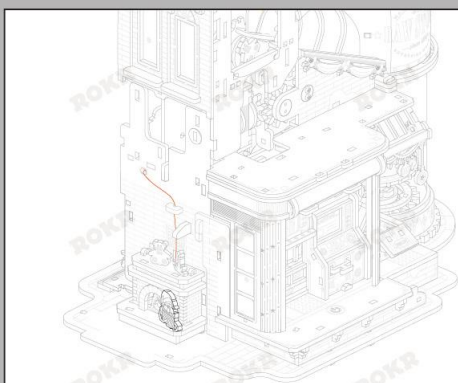


D5  
D21  
D22  
D32  
D33  
L3  
L17  
1  
P1



D2  
L4

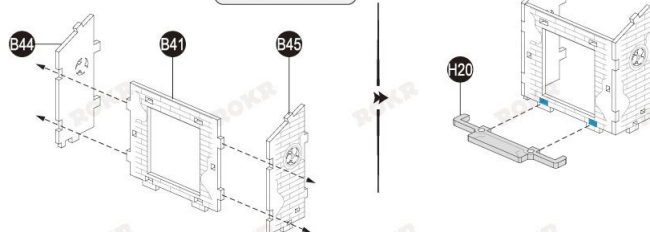
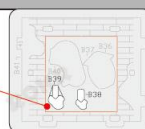




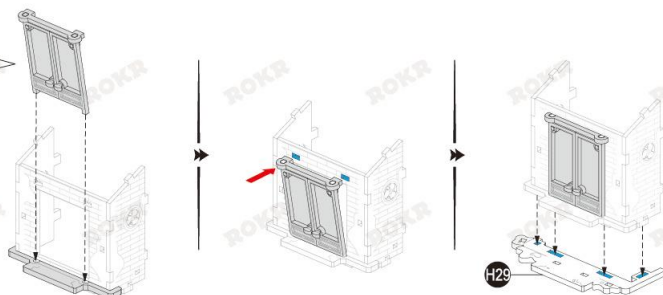
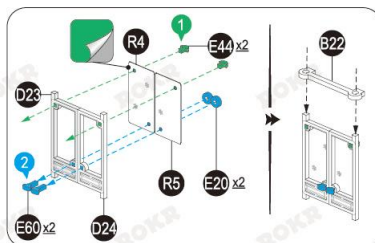
17

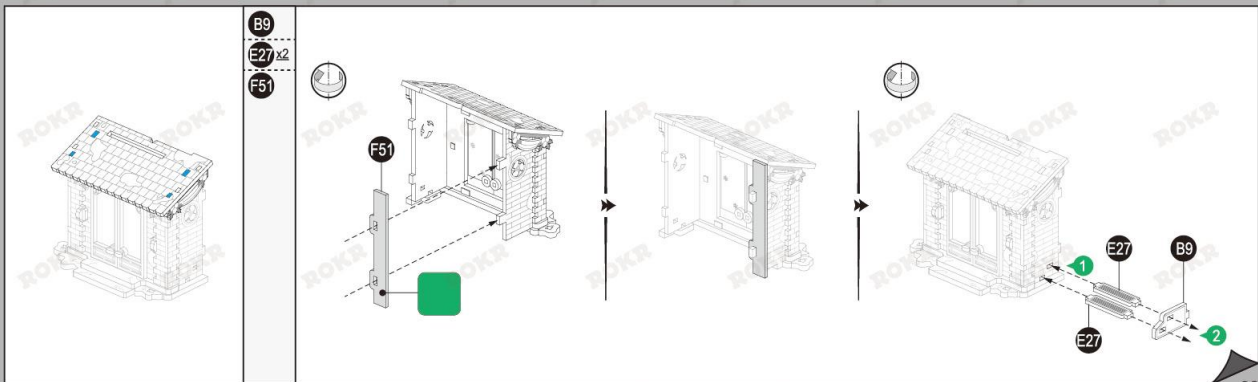
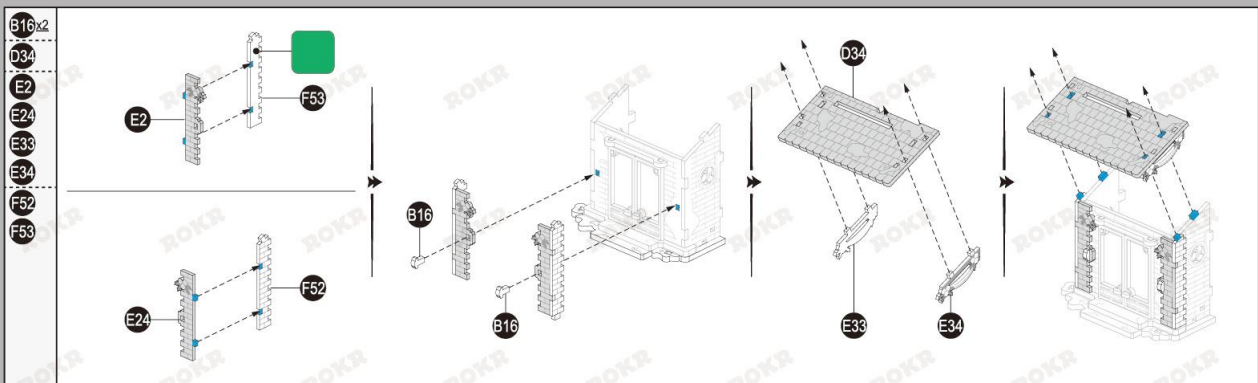
B41  
B44  
B45  
H20

Remove and  
save these parts.

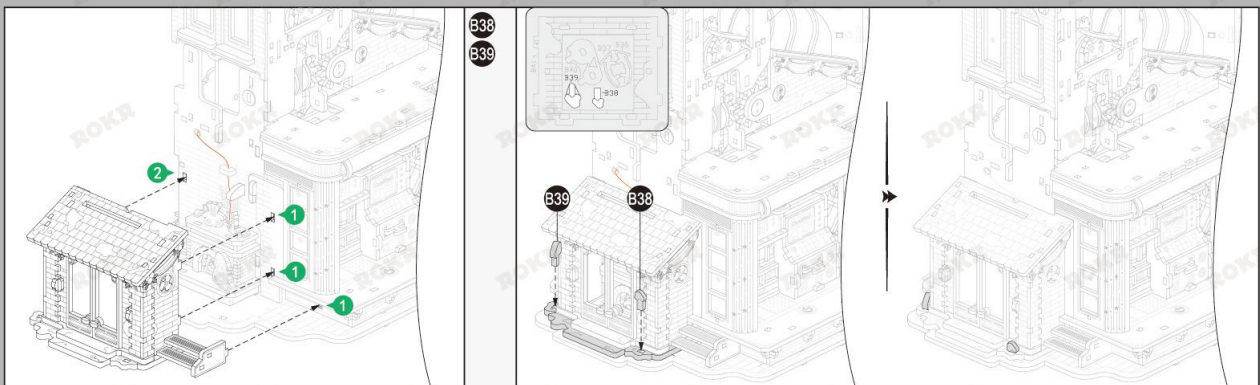


B22  
D23  
D24  
E20 x2  
E44 x2  
E60 x2  
H29  
R4  
R5



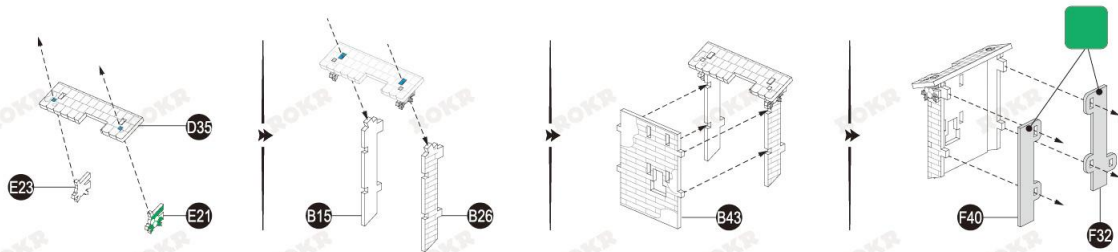


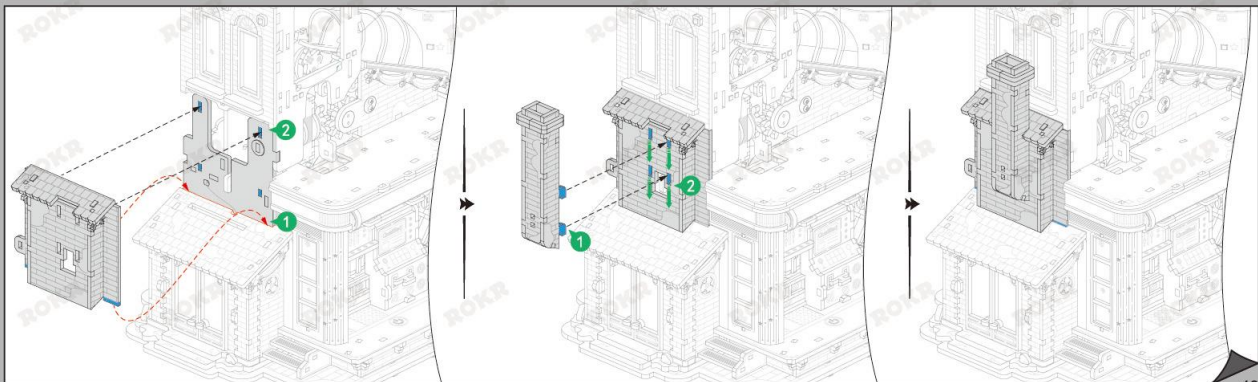
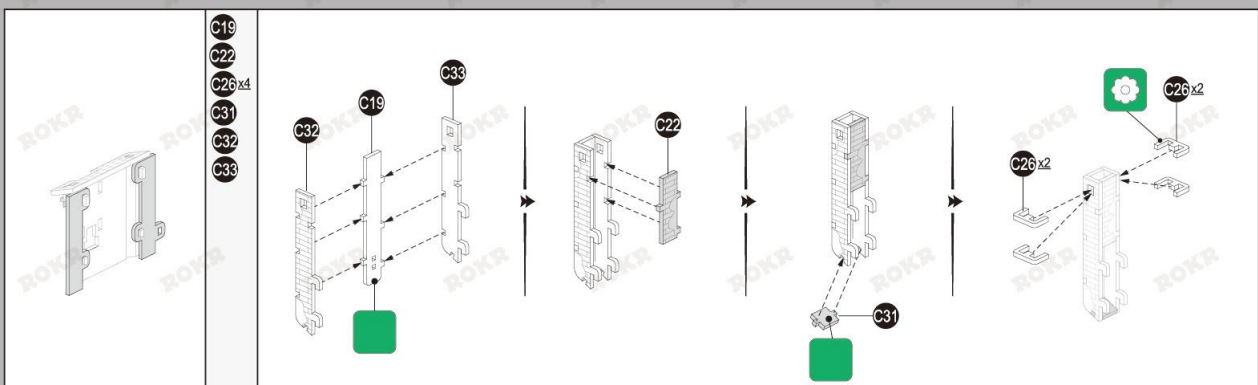




18

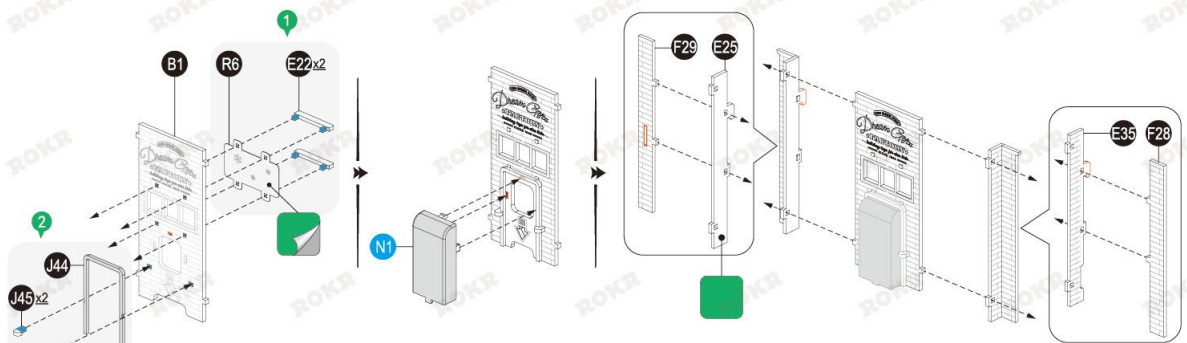
- B15
- B26
- B43
- D35
- E21
- E23
- F32
- F40



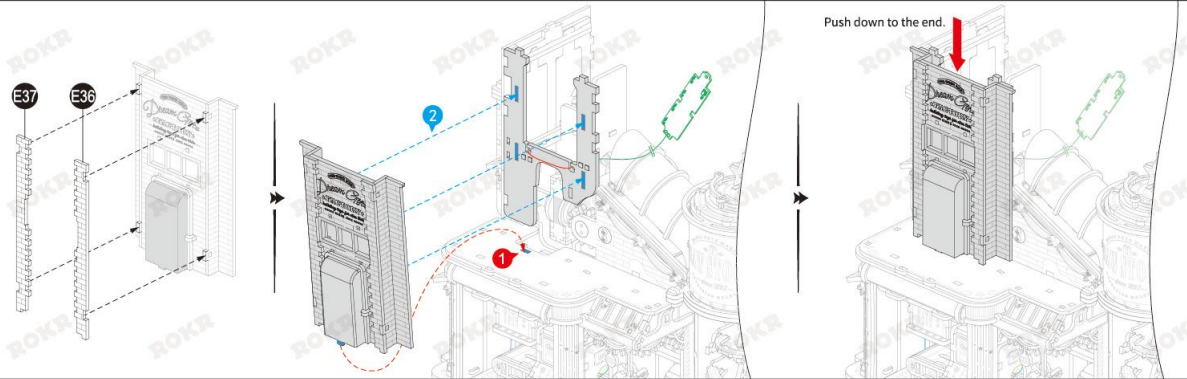


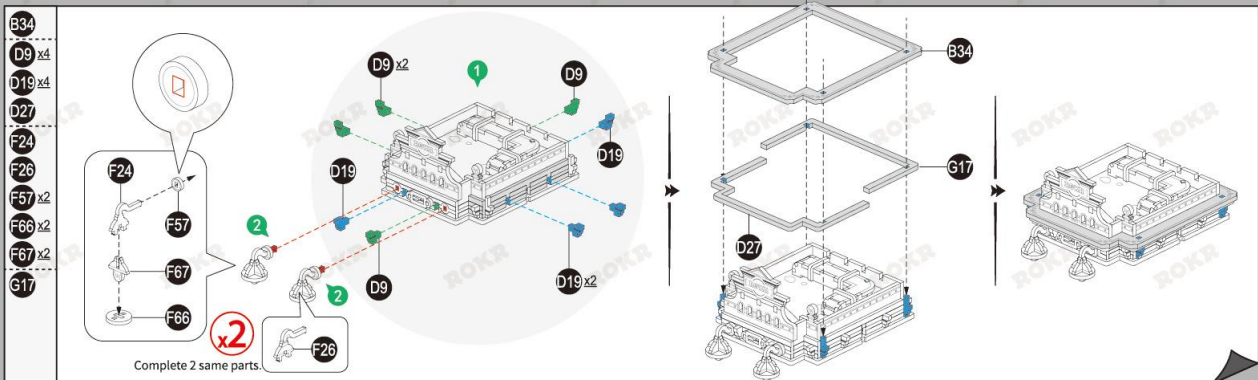
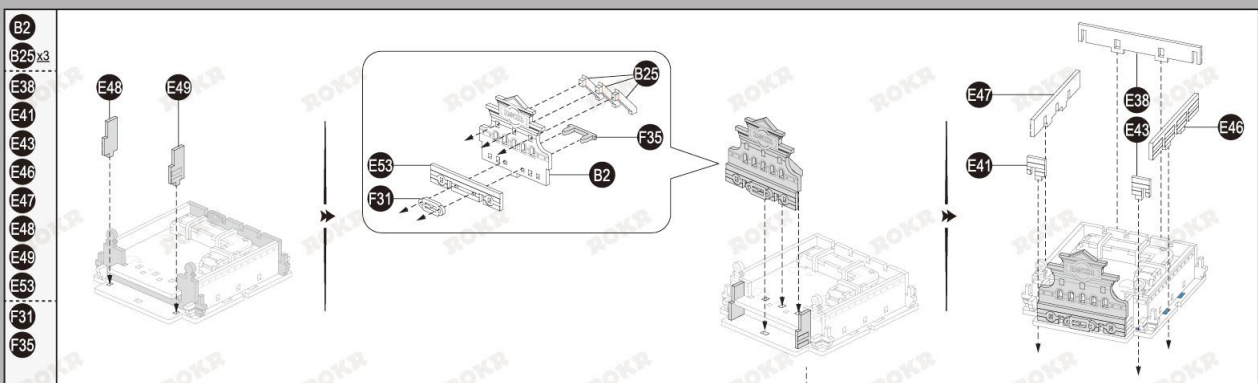
19

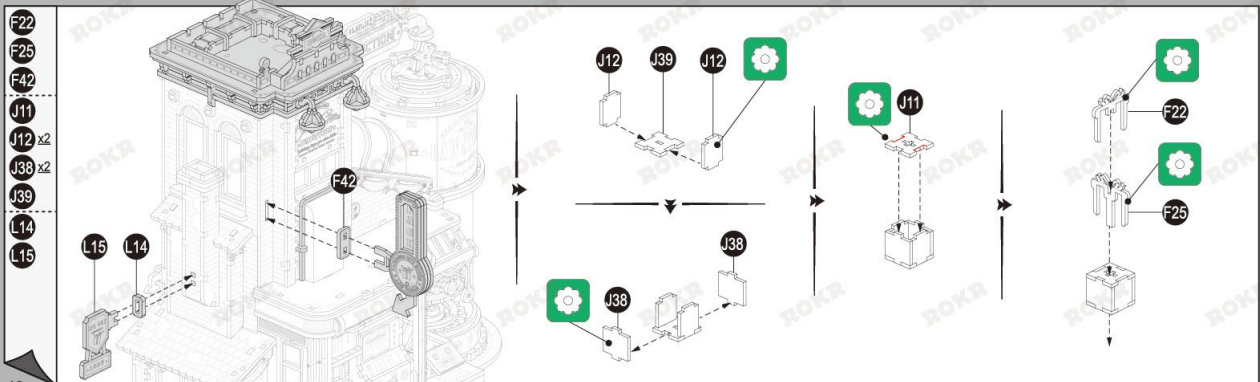
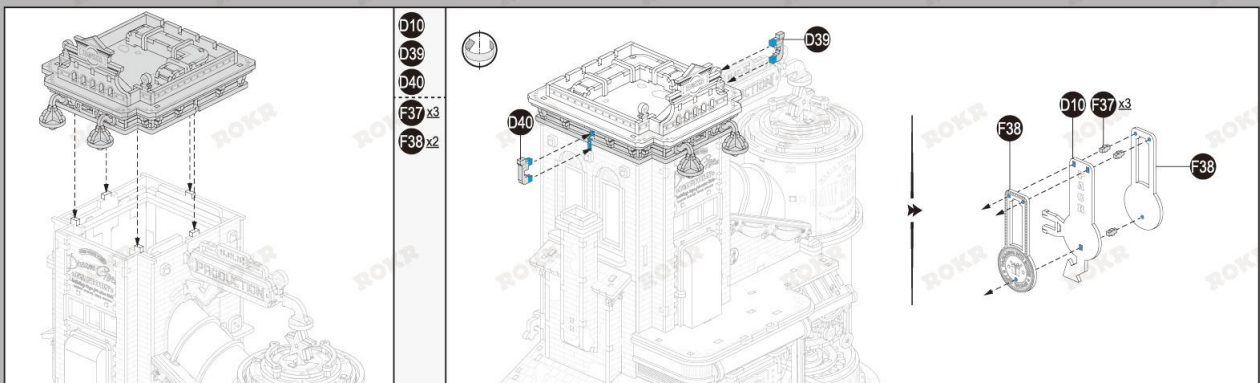
B1  
E22x2  
E25  
E35  
F28  
F29  
J44  
J45x2  
N1  
R6



E36  
E37

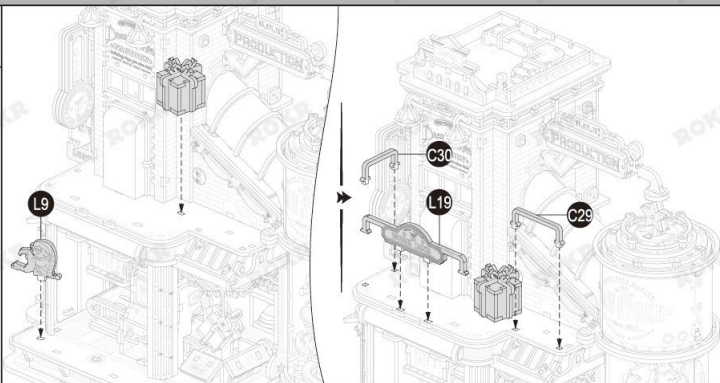




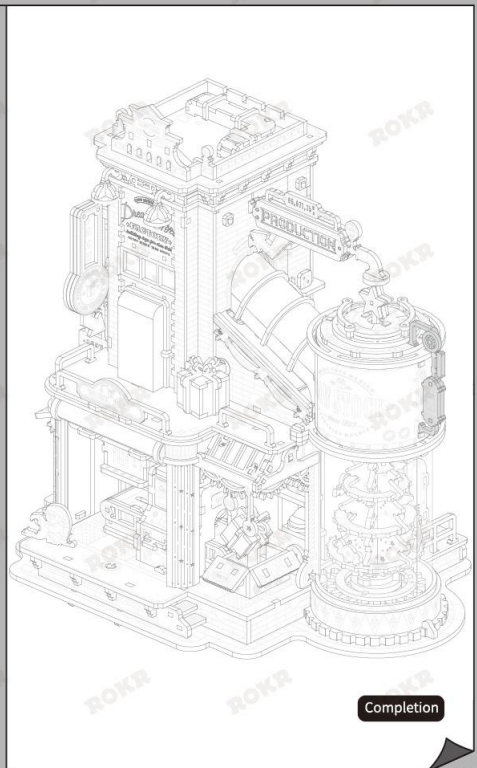
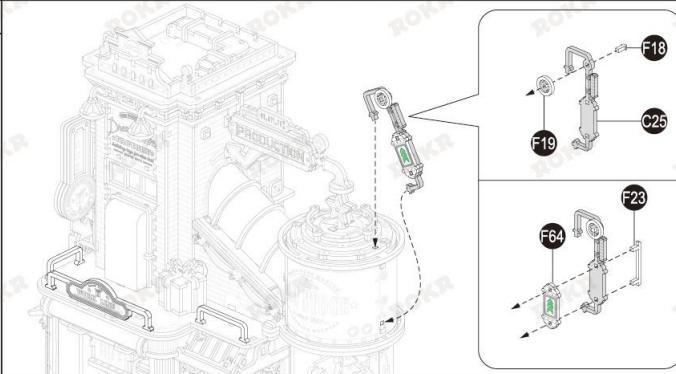




C29  
C30  
L9  
L19



C25  
F18  
F19  
F23  
F64



**ROKR**

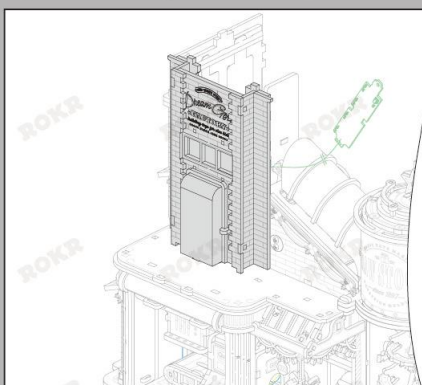


ROKR Facebook



[www.robotime.com](http://www.robotime.com)

49.1EAB01.100



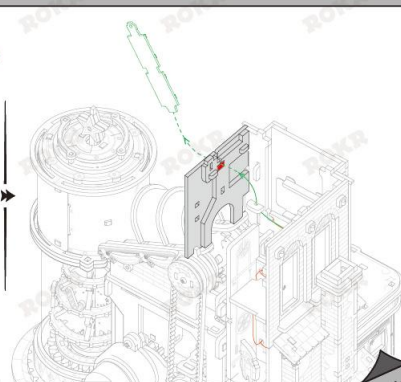
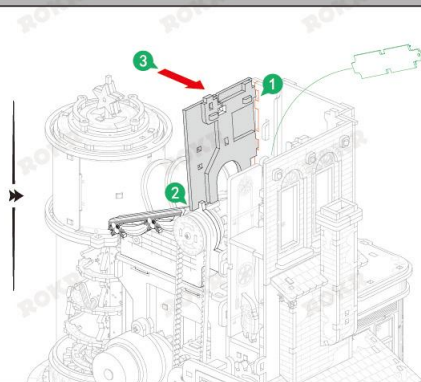
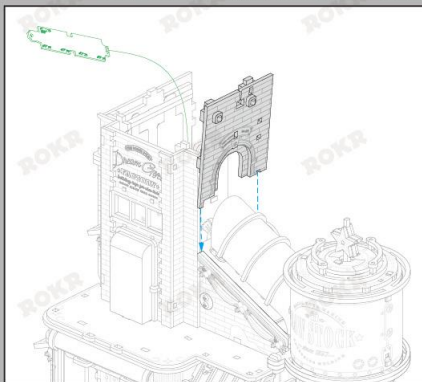
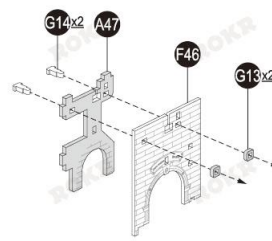
20

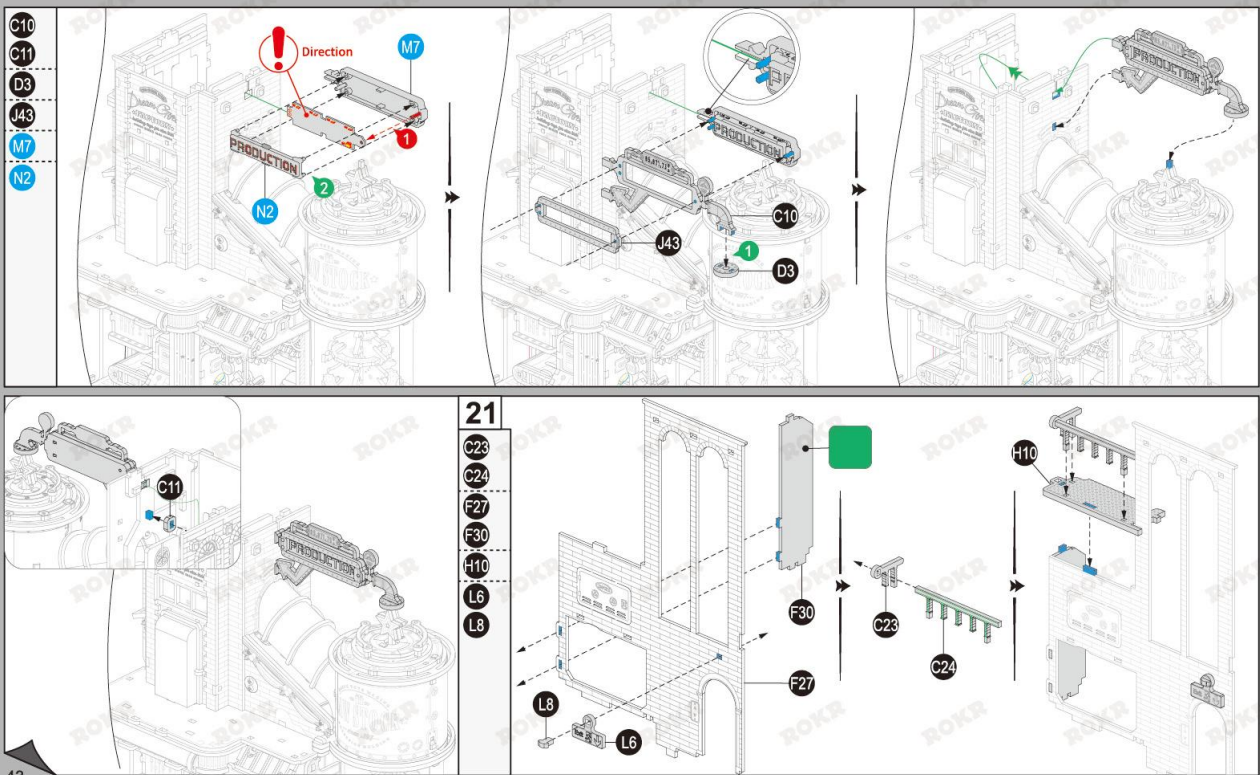
A47

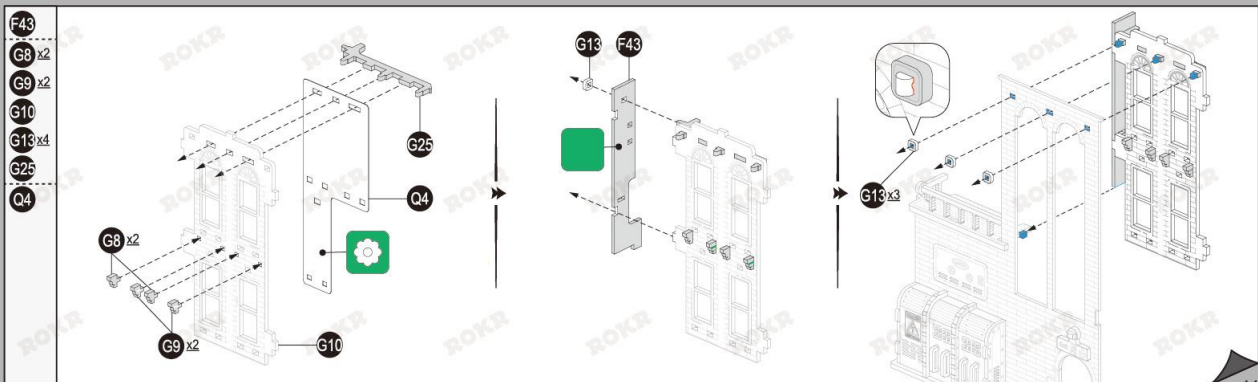
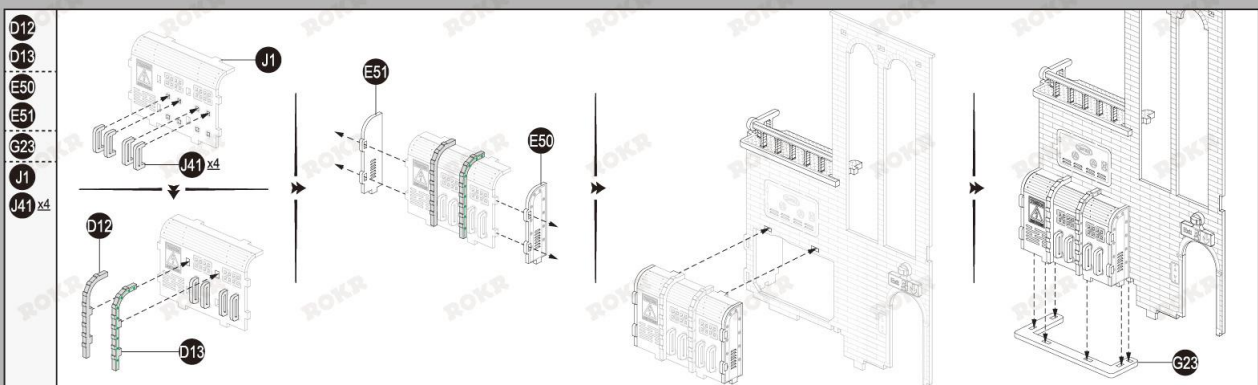
F46

G13x2

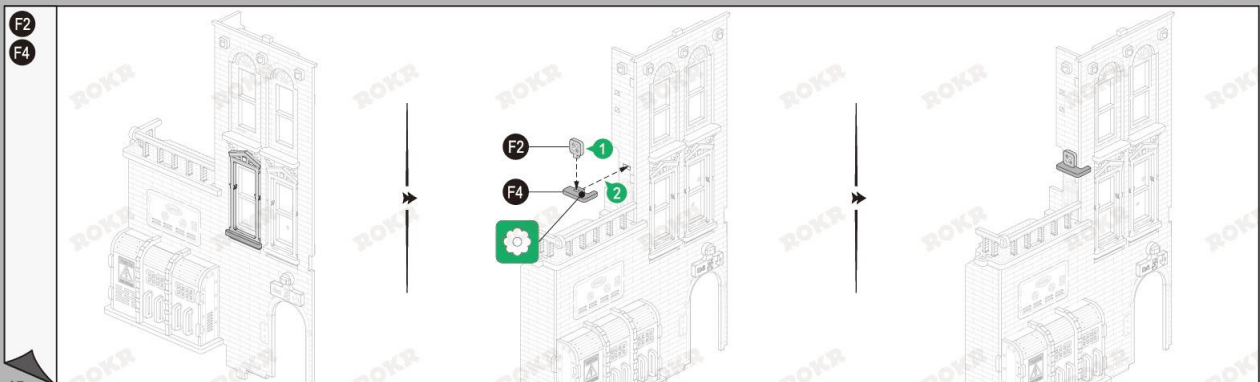
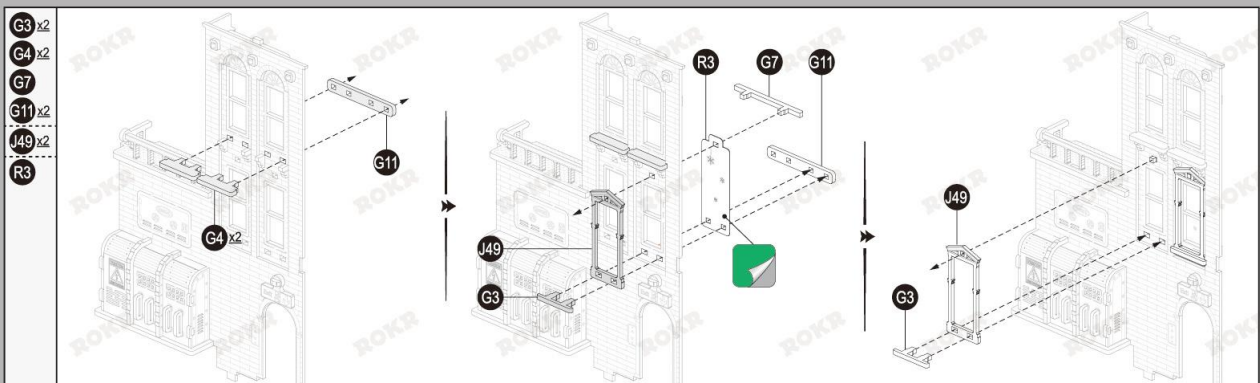
G14x2

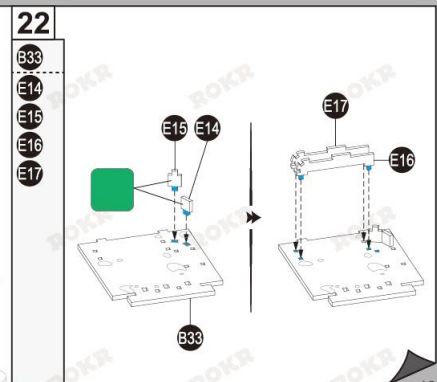
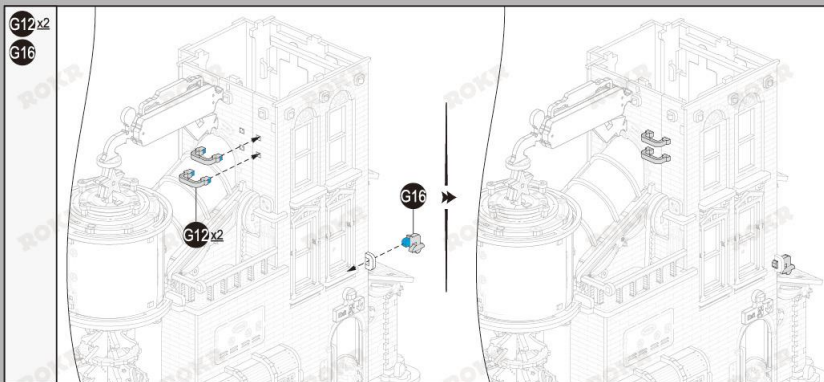
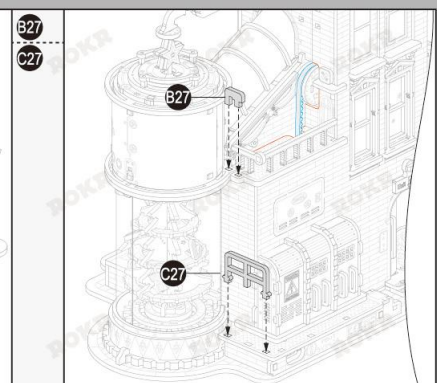
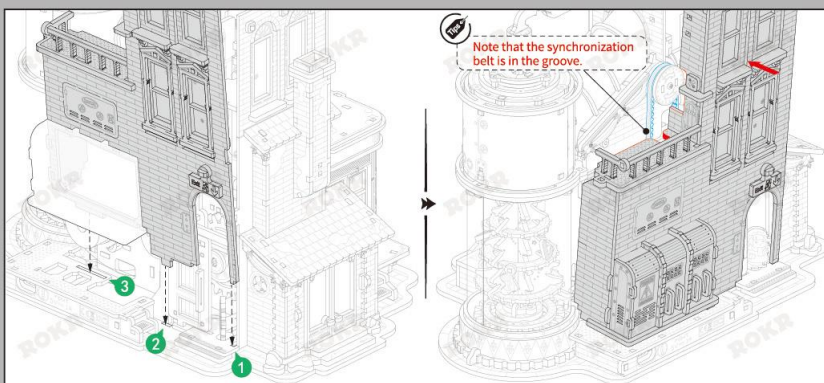




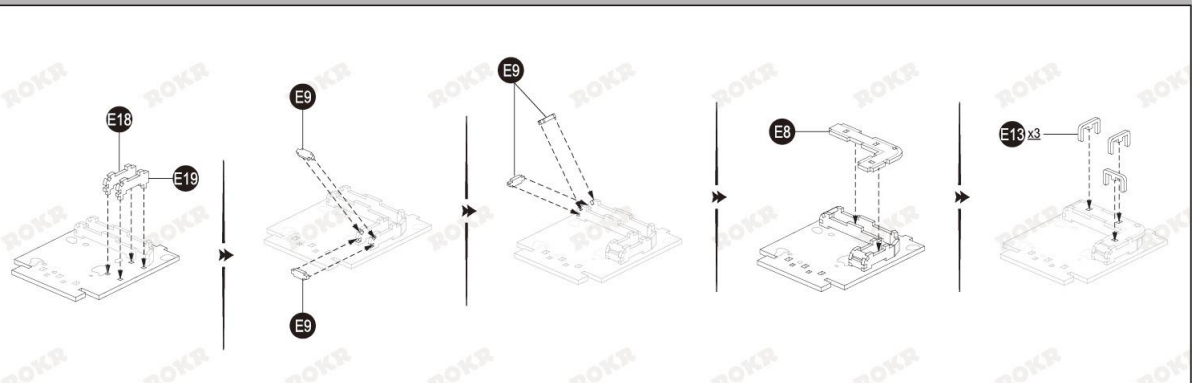








E8  
 E9 x4  
 E13 x3  
 E18  
 E19



D14  
 D15  
 D16  
 D20  
 G1

