

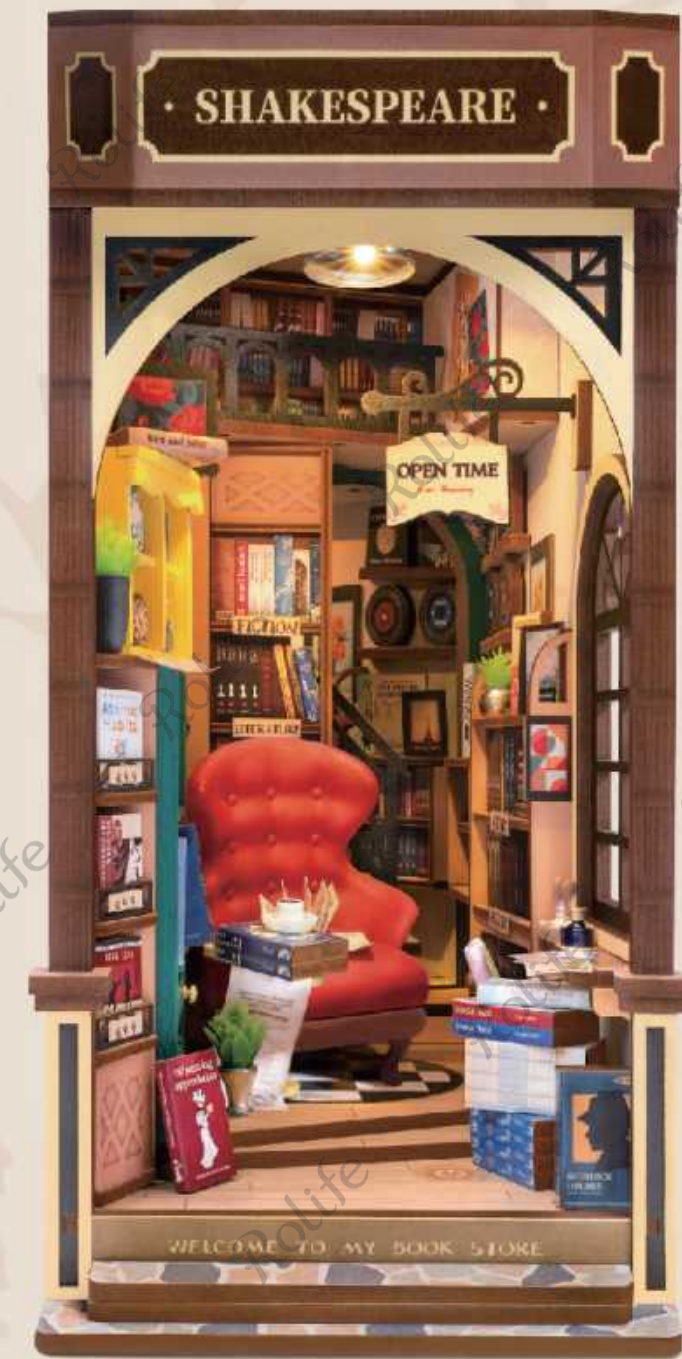
Designed by **ROBOTIME**
www.robotime.com
MADE IN CHINA
49.2TGB07.100.B

Rolife

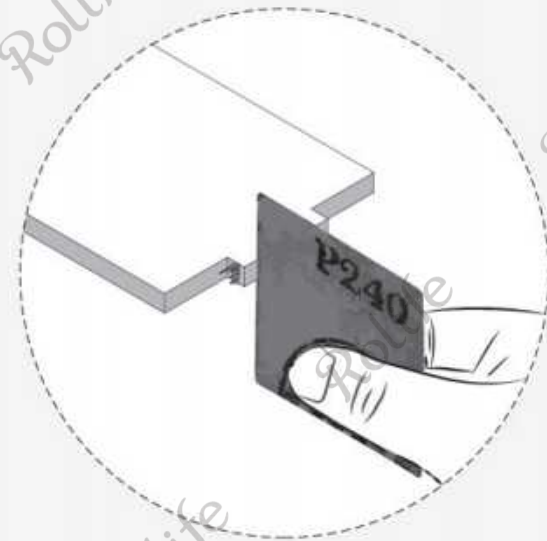
BOOK NOOK & WONDERLAND

• TGB07 BOOKSTORE

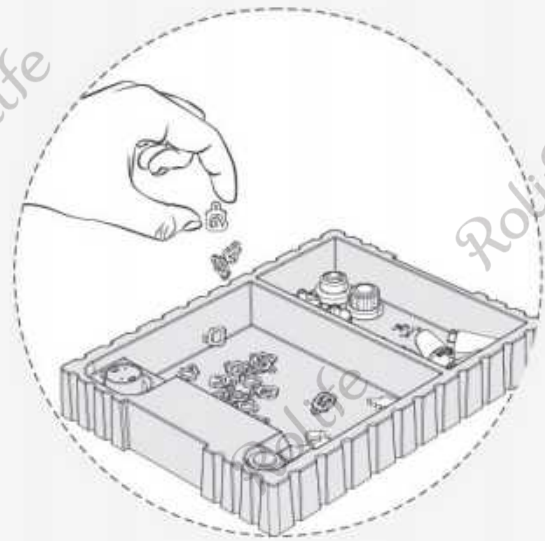
The picture is for reference only.



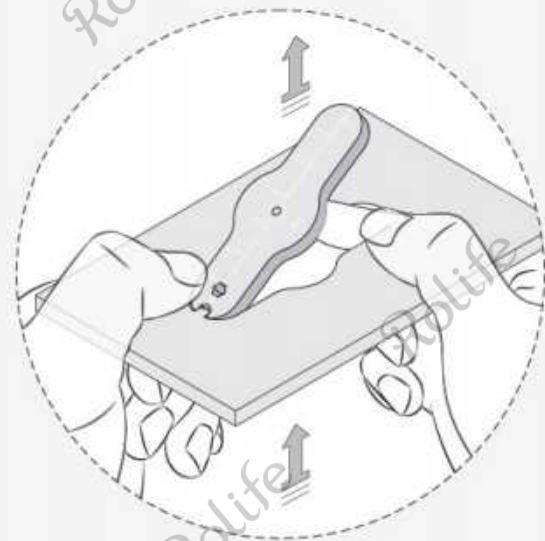
Assembly Tips



Polish the edges with sandpaper if there are burrs on pieces or it's hard to insert.



Put small parts into the box to prevent loss.



Remove the part by pressing its back to reduce burrs.

⚠ WARNING

- The product requires 2 "AAA/LR03/AM4 1.5V" batteries (batteries for self-preparation).
- Screw the fastener on the rear cover of the battery box using a screwdriver to remove or insert the batteries.
- Non-rechargeable batteries are not to be recharged.
- Rechargeable batteries are only to be charged under adult supervision.
- Rechargeable batteries are to be removed from the toy before being charged.
- Different types of batteries, new and old batteries cannot be mixed in use.
- Batteries are to be inserted with the correct polarity (+ and -).
- Remove the exhausted battery in time.
- The power supply terminal cannot be short circuited.
- The wire in the package cannot be connected with the plug.
- Connect the toy to the battery that we recommend rather than the device with more than 2 batteries.
- Check each part before assembly. If the part is damaged, fix it well before assembly.
- Please keep the product away from fire or any place that may cause damage.
- The instruction includes important information and please keep it well for future reference.

⚠ ATTENTION

- The product is for people who are over 14 years old. Children should assemble under the guidance of adults.
- The product contains small parts and electronic components. Adults should guide and supervise children in the correct use of the product to prevent ingestion or choking.
- Some auxiliary tools are required to assemble our products. Please choose reasonably to avoid injury.
- Please read the instruction carefully to assure that all parts are intact before assembling.
- Please cut and assemble these delicate parts carefully. Some parts need to be assembled with adhesive tape to ensure all parts are sticky firmly.
- Please install the electronic components correctly and test whether the circuit is normal after completion.
- Please don't clean this product with chemical cleaners: alcohol, ammonia water, glass cleaner, etc.
- Please clean the product with a clean soft cloth, and sand the board burr lightly with sandpaper.










● Q&A

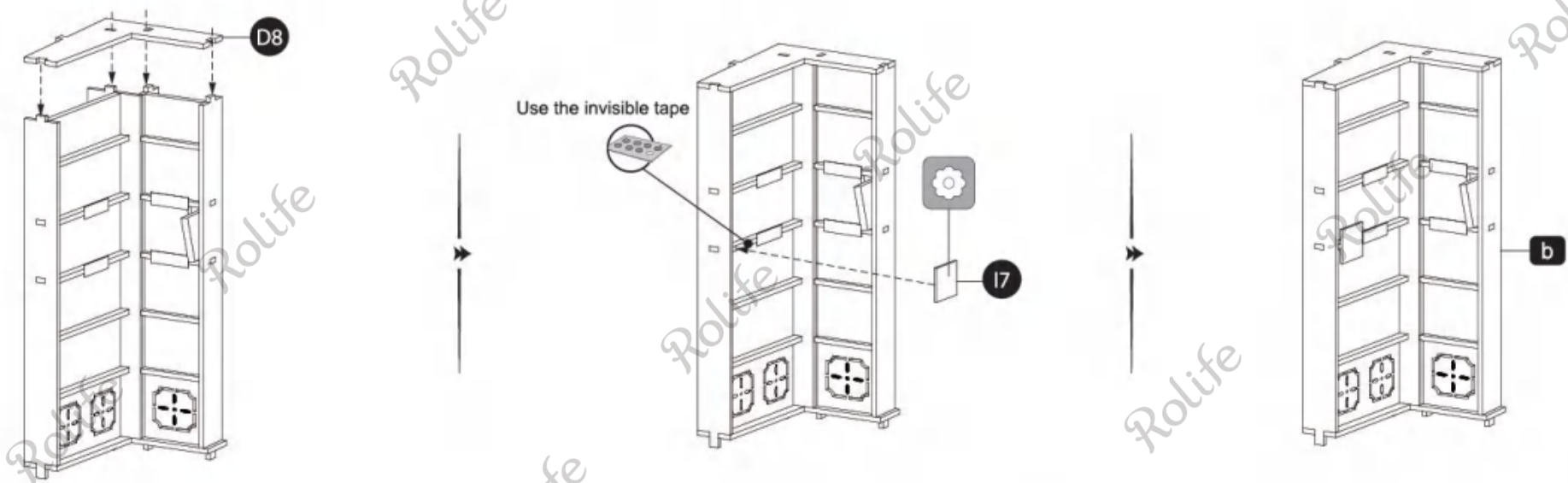
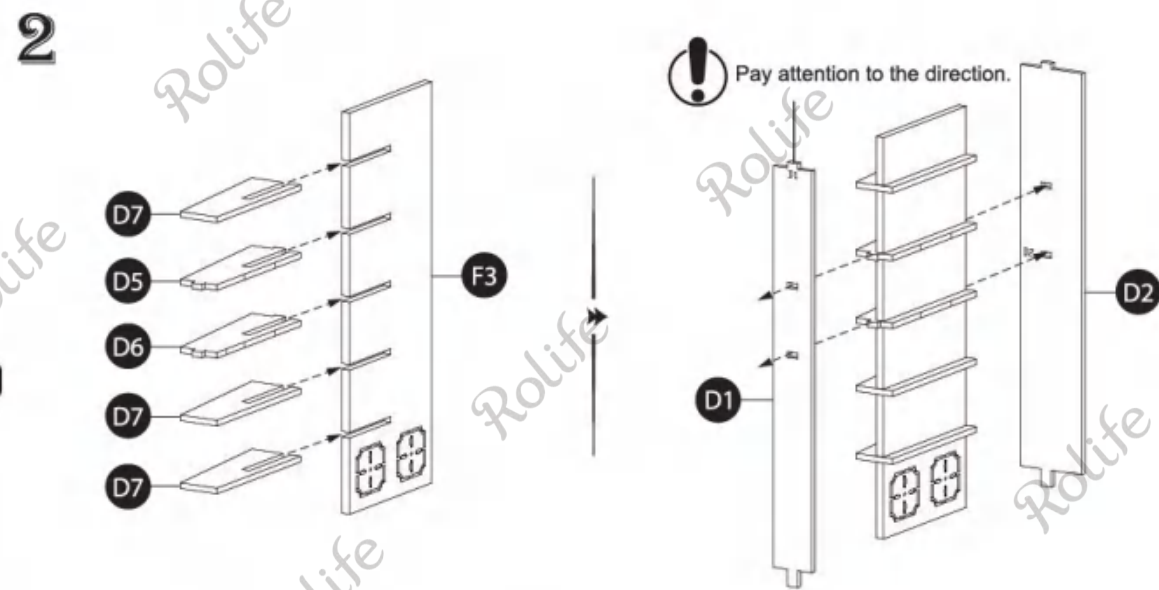
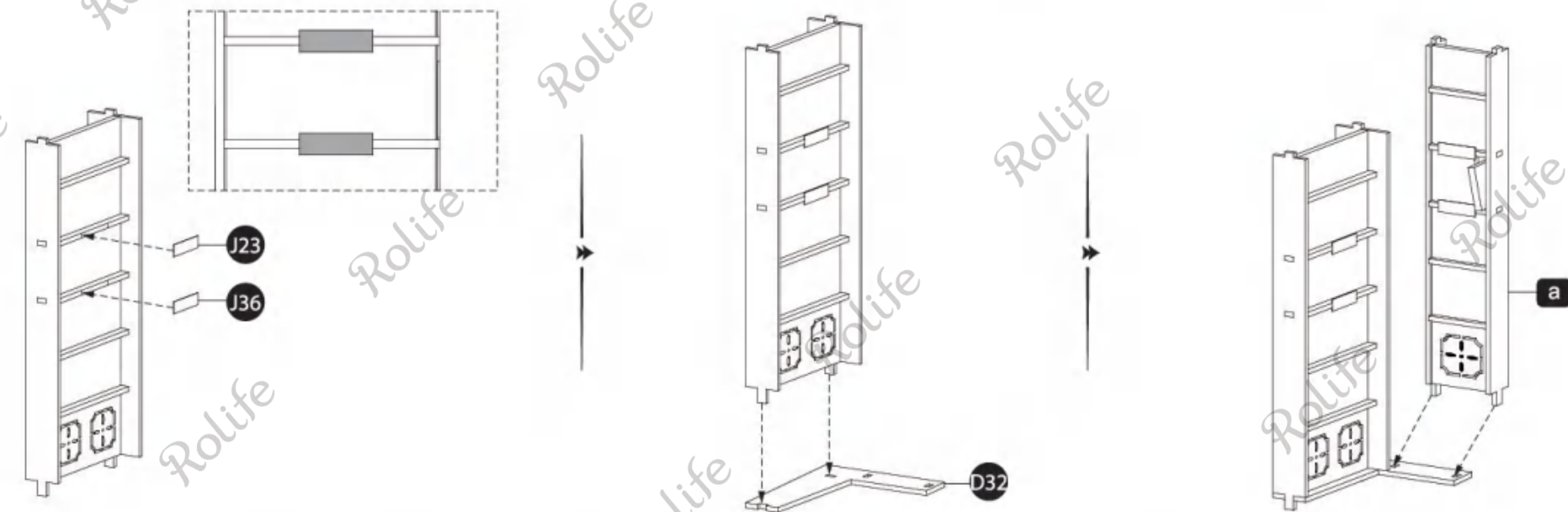
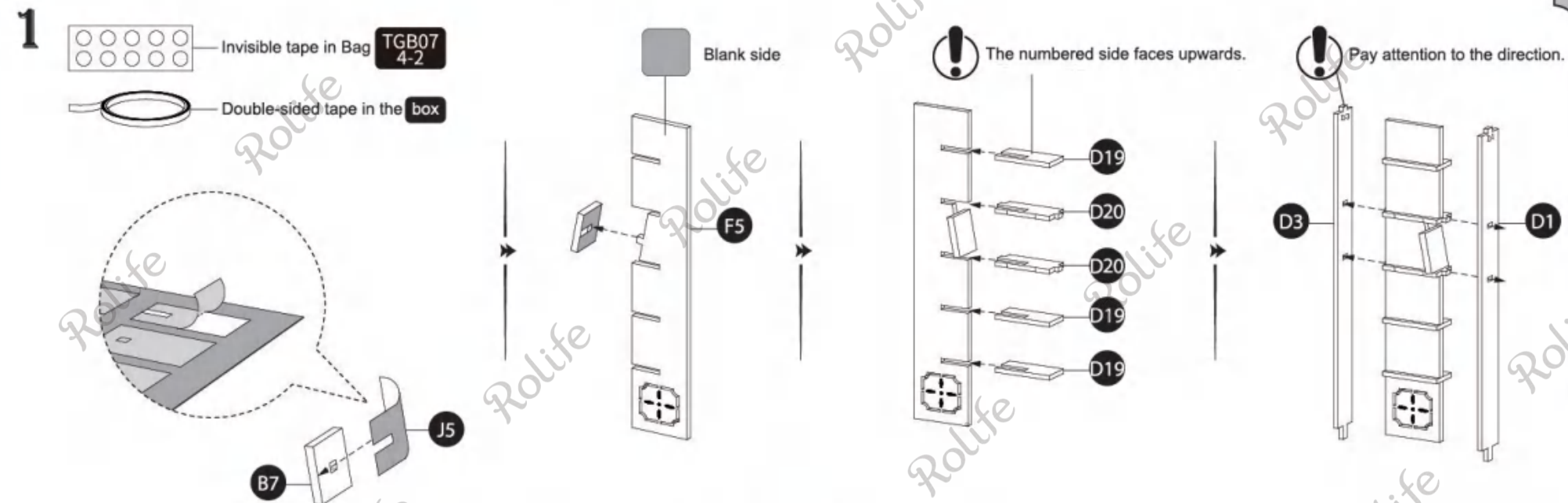
Q1: What if there are burrs on the edges of parts or it's hard to insert?
A1: Polish the joints with sandpaper to enhance assembling accuracy, and polish the burrs to ensure safety.

Q2: What if the parts are loose after disassembling and assembling?
A2: Apply a dab of glue to the joints.

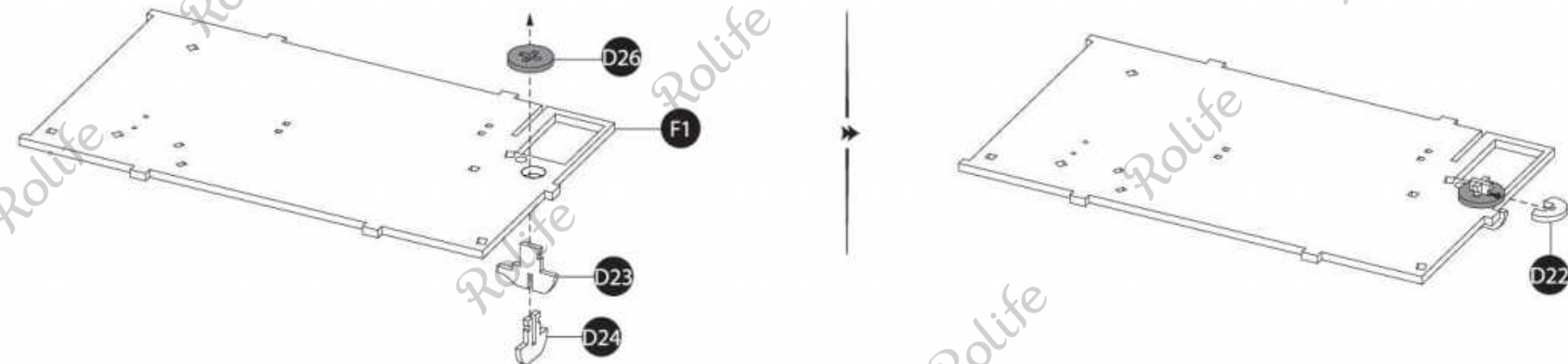
Q3: What if the light doesn't work after turning on the switch?
A3: 1. Check if the batteries are inserted and with the correct polarity.
2. Check if the switch of the battery box is on.
3. Check if the light parts and the touch board are completely welded and do not have breakage.
4. Check if the wires are connected to the same color ones.
5. Check if the touch board aligns with the wooden board and there is no gap between them.

● Icon Illustration

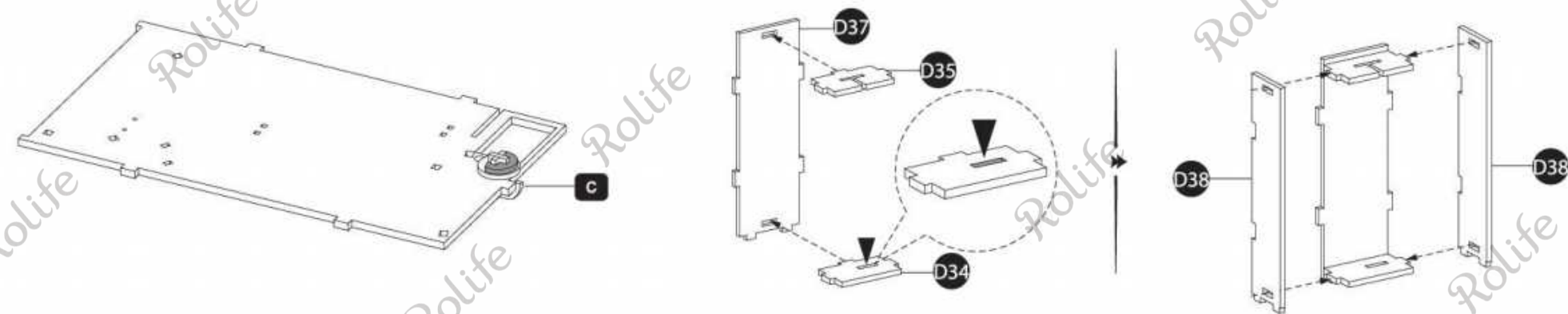
- | | | |
|---|--|---|
| 1 Step 1 |  Printed side |  Use the double-sided tape |
| 2 Step 2 |  Blank side |  Use the invisible tape |
|  | Perspective changed |  Flip to assemble |
|  | Remove protective film |  Complete 2 same parts |
|  | Special attention in assembly | |



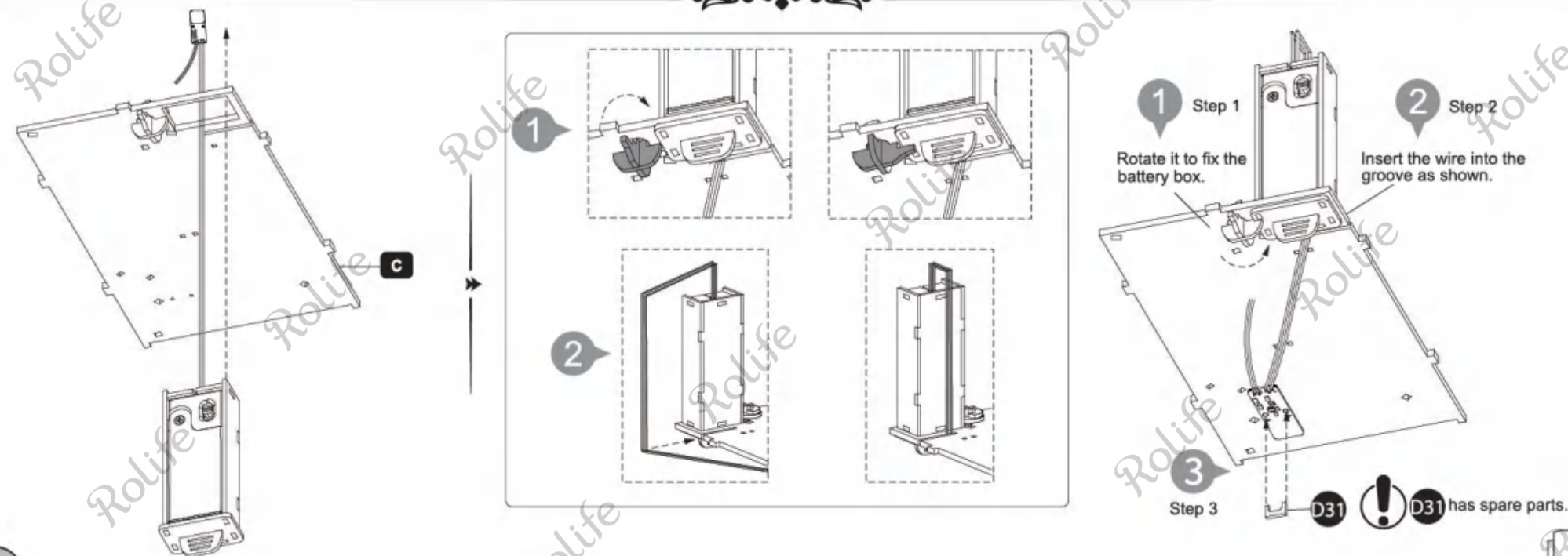
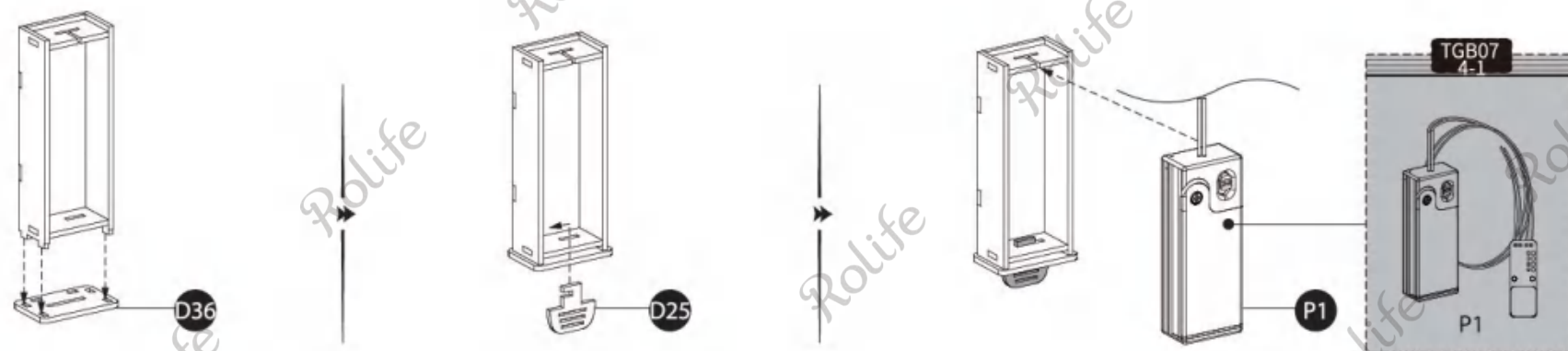
3



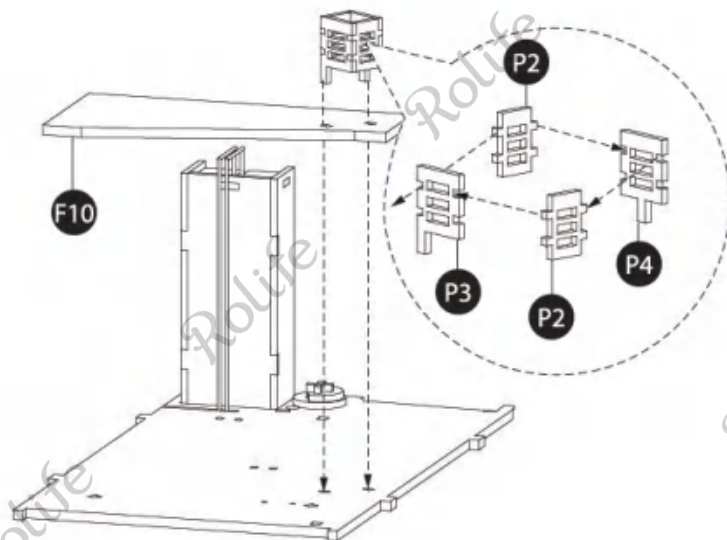
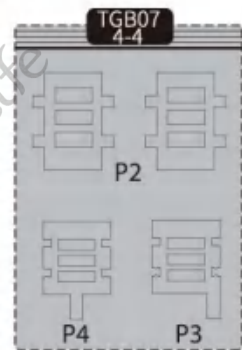
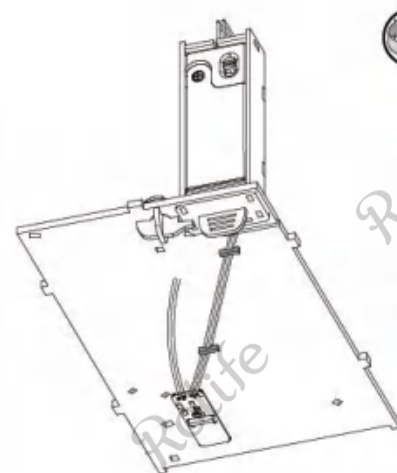
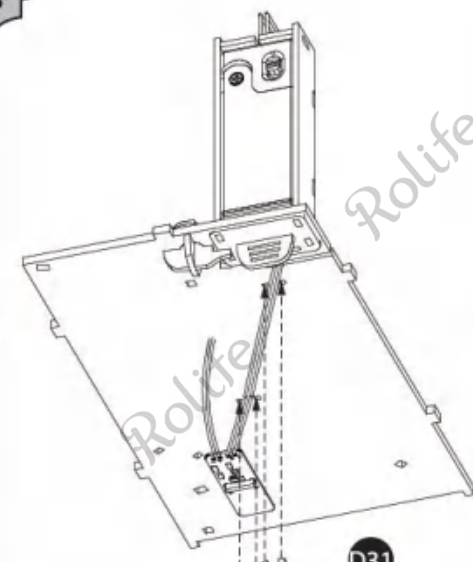
4



5

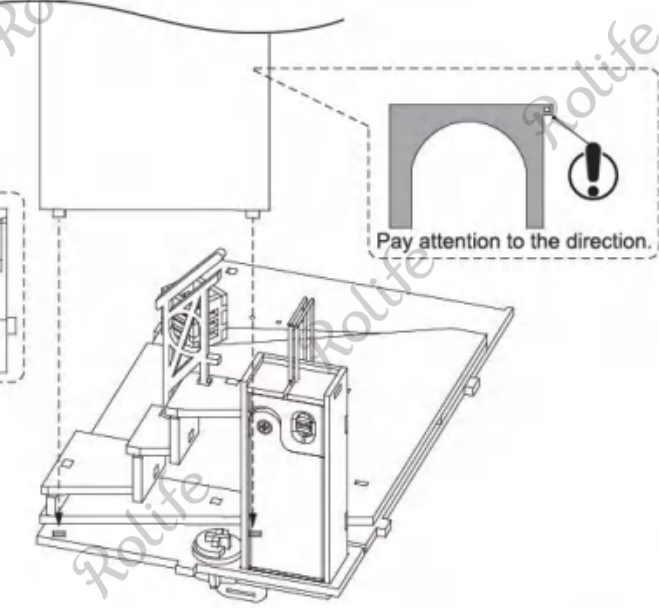
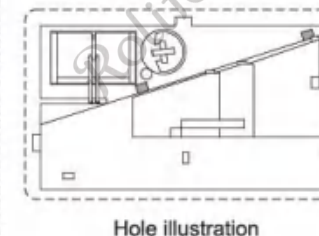
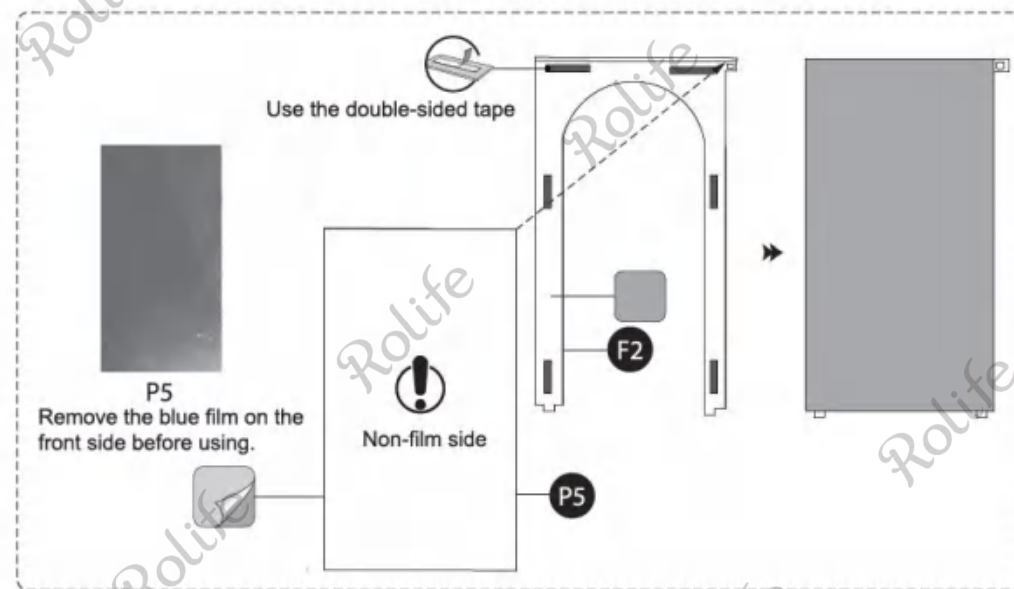
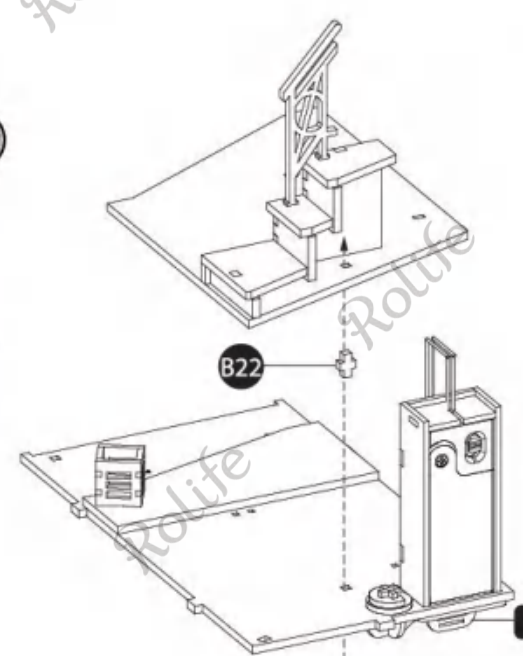
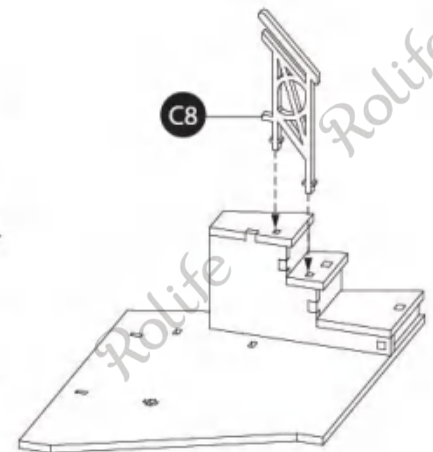
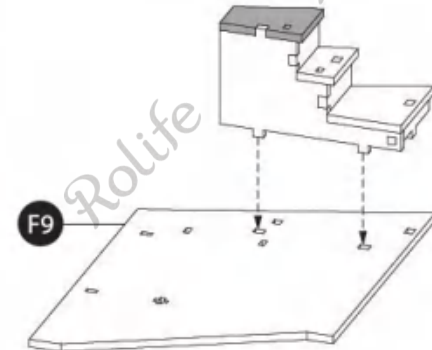
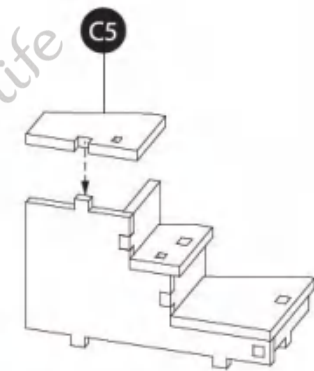
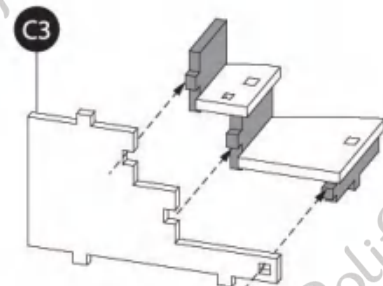
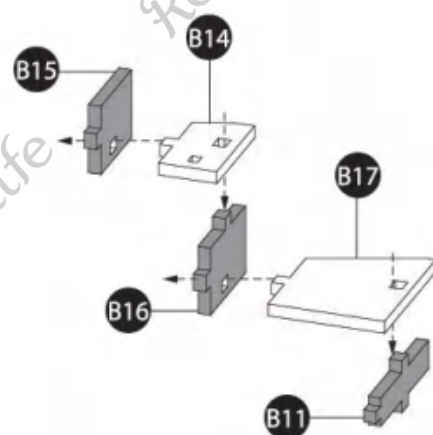
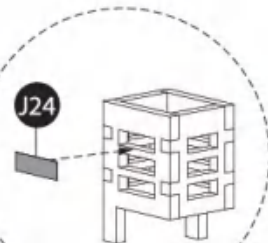
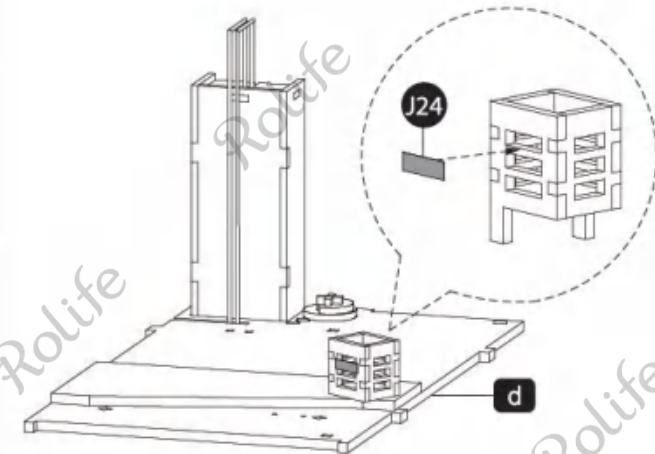


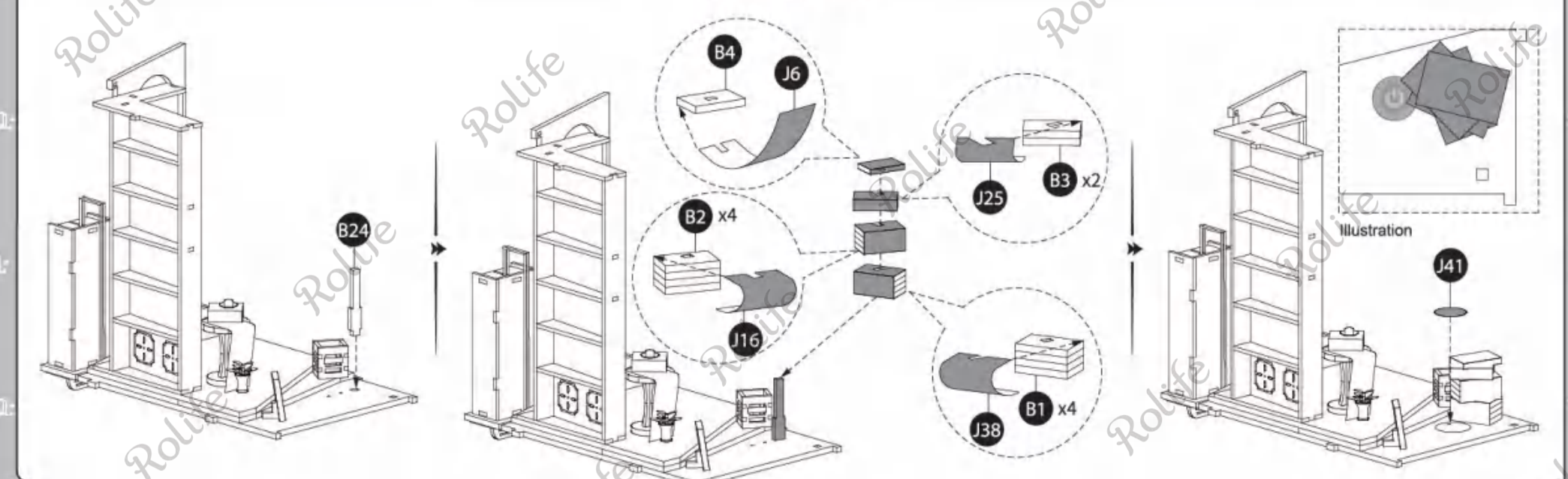
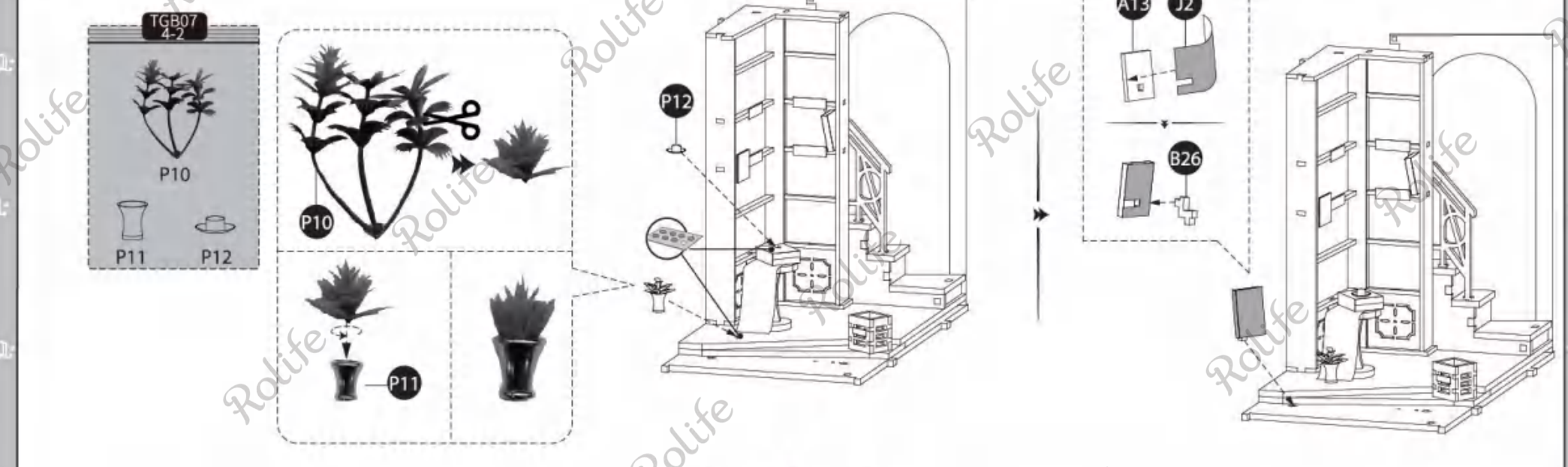
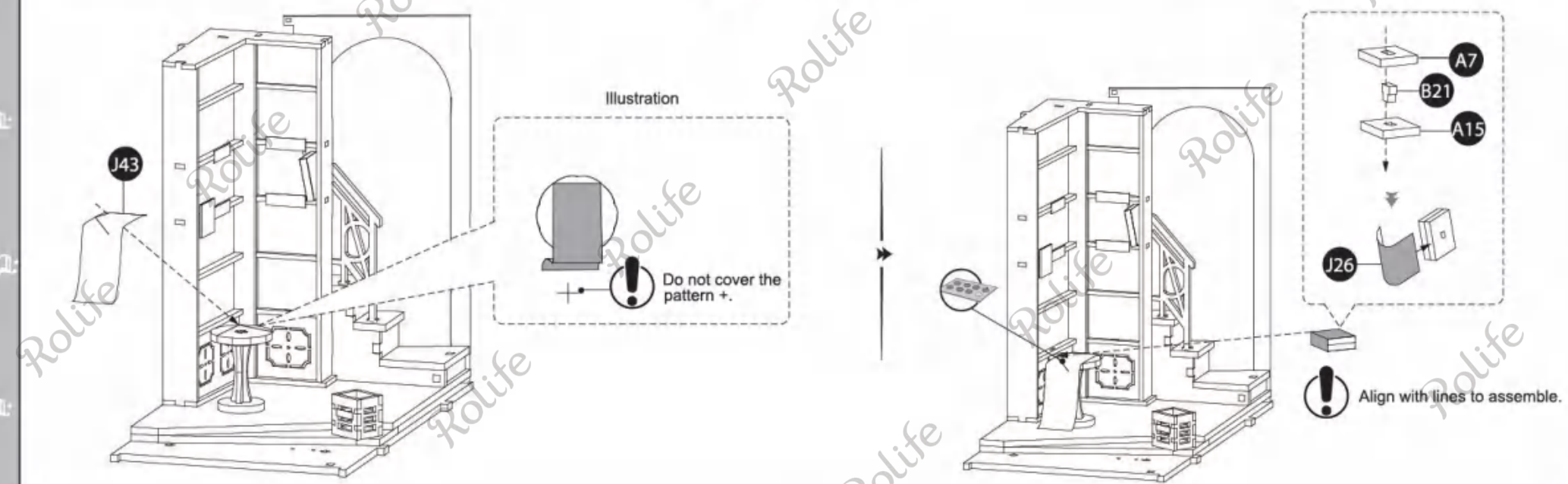
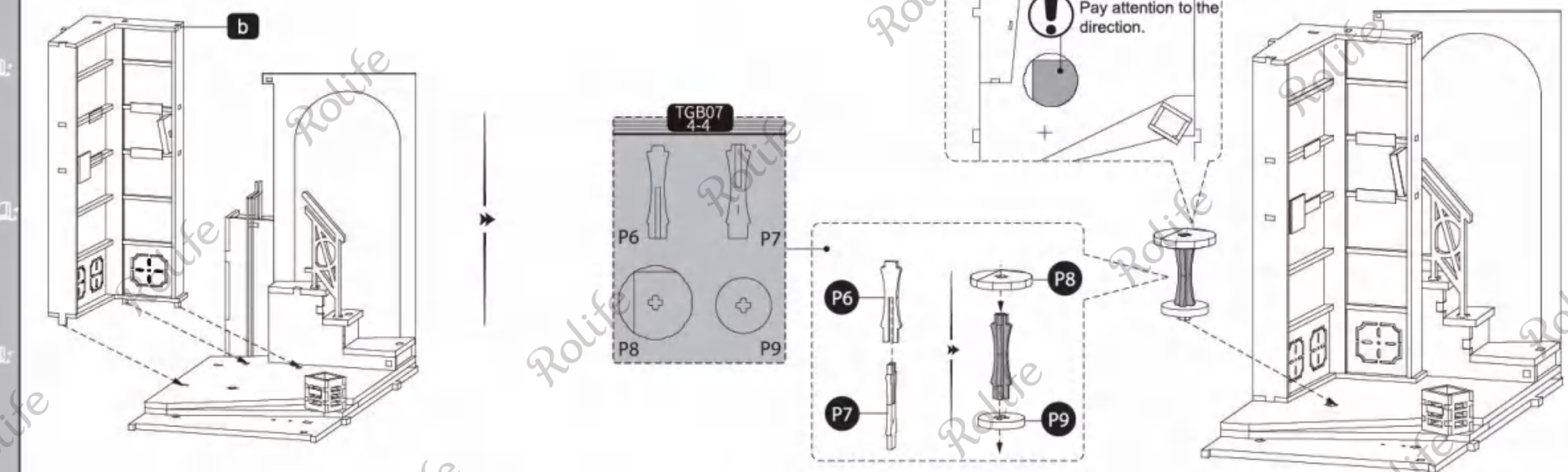
6

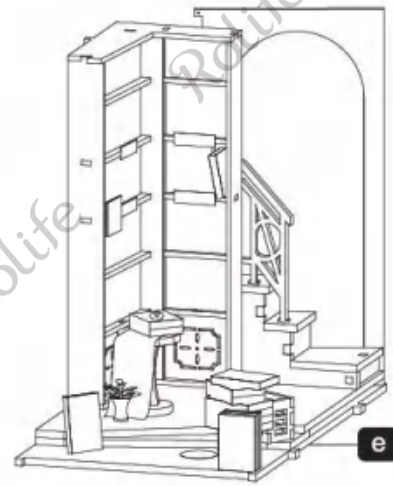
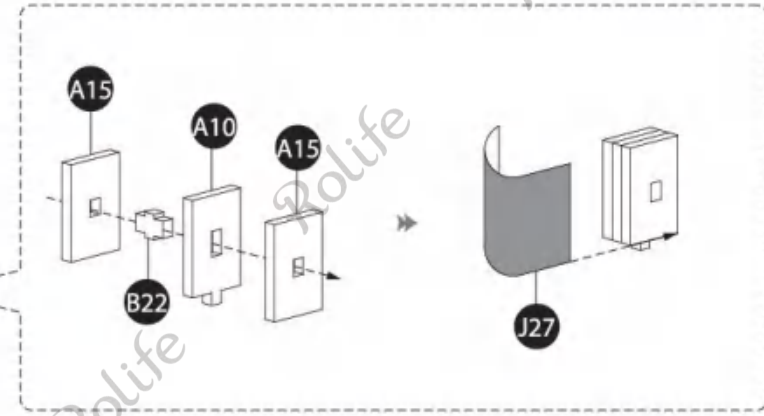
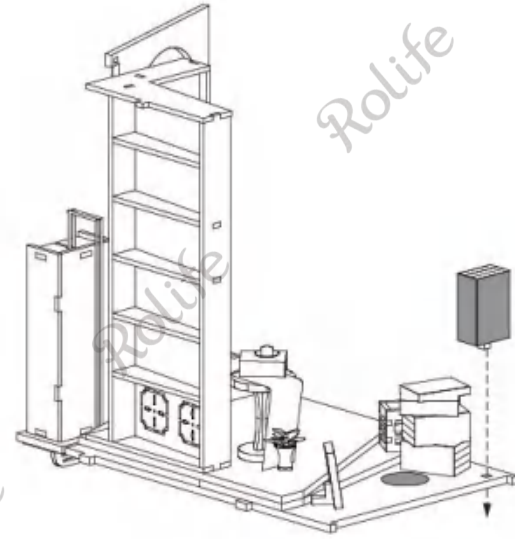


! D31 has spare parts.

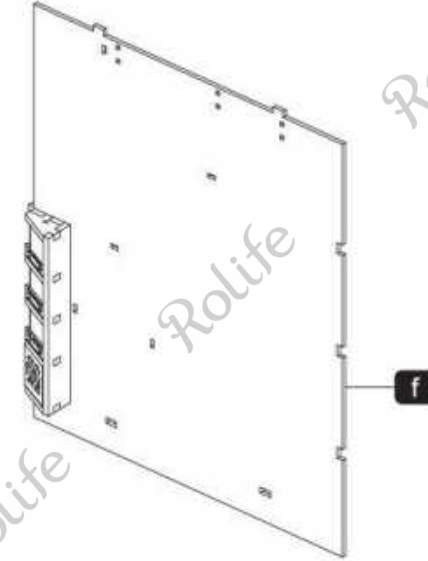
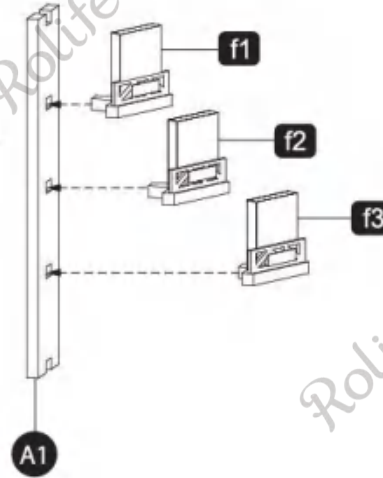
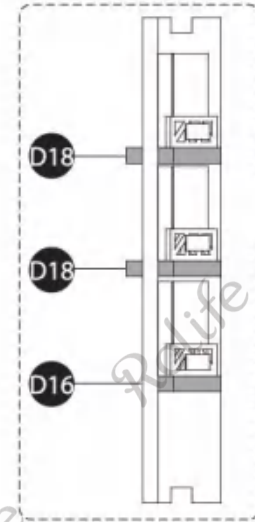
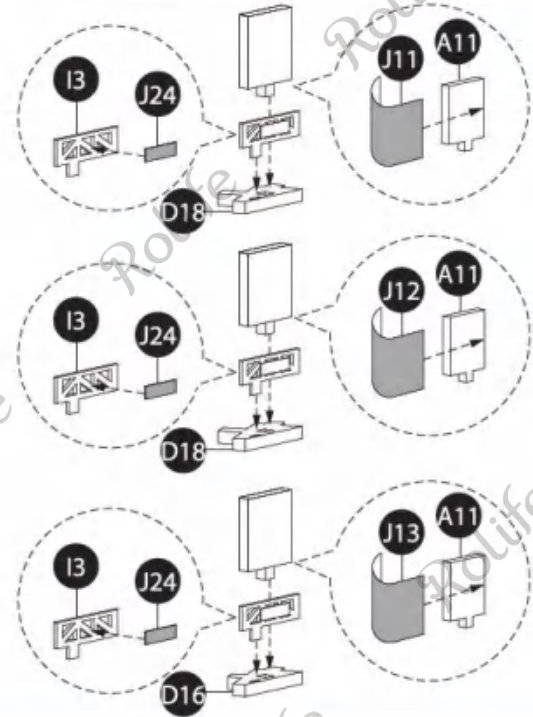
5



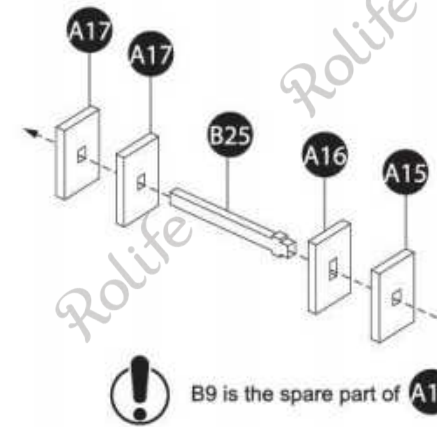




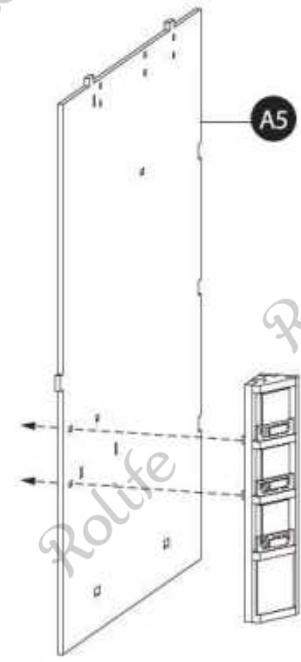
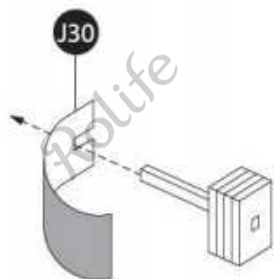
6

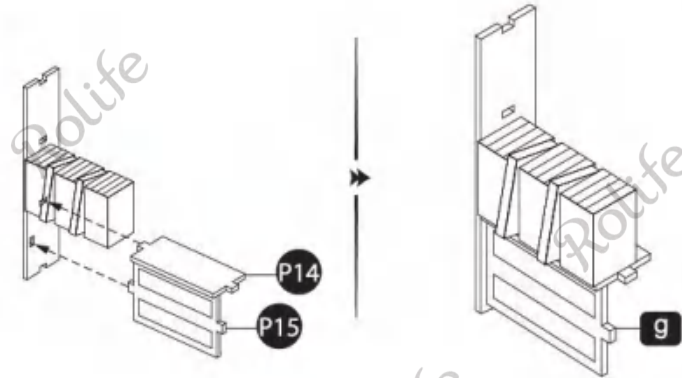
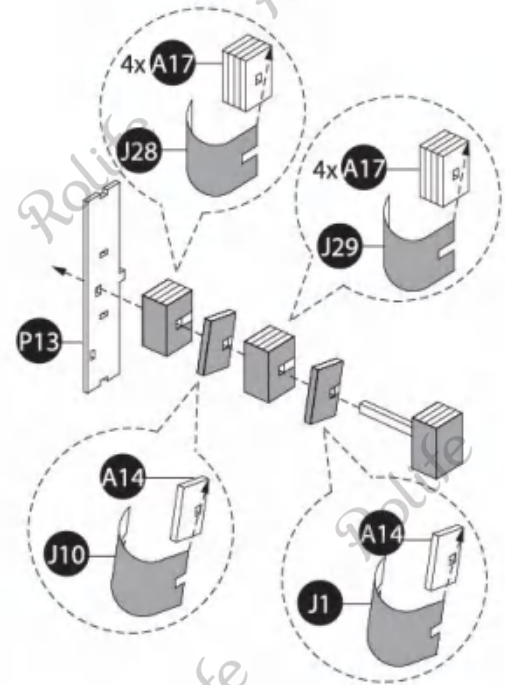
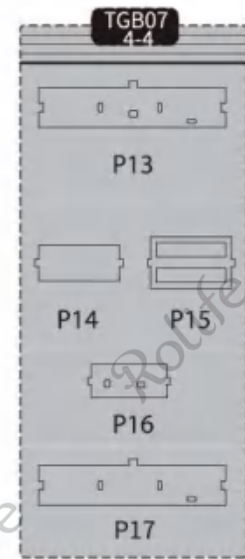


7

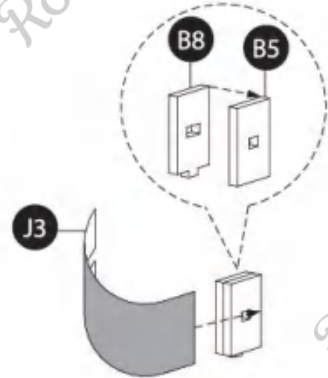


! B9 is the spare part of A17.

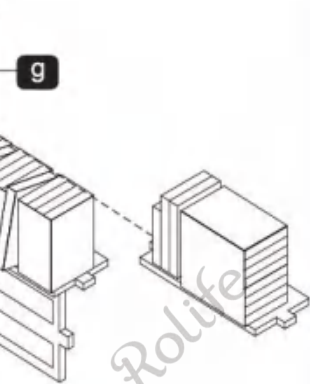
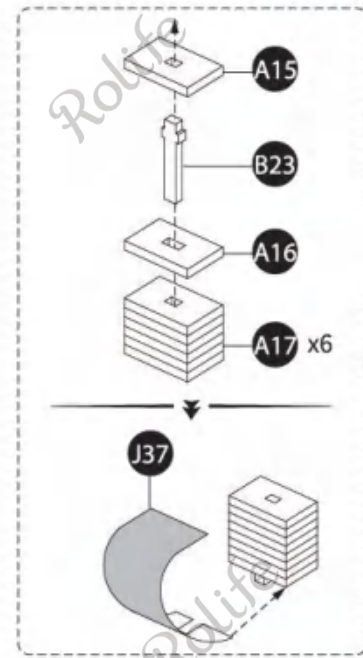
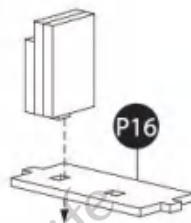
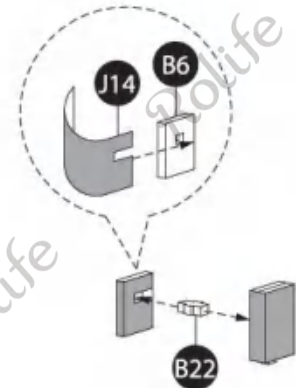




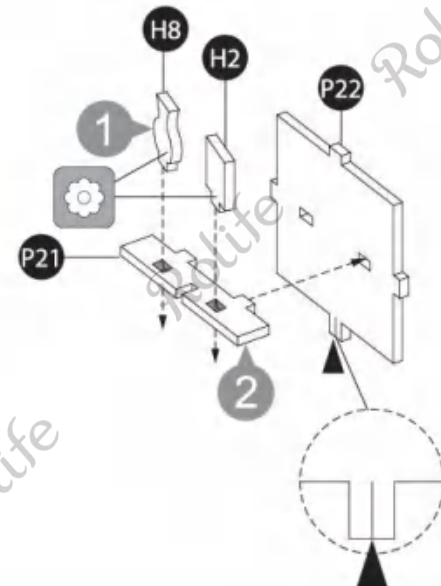
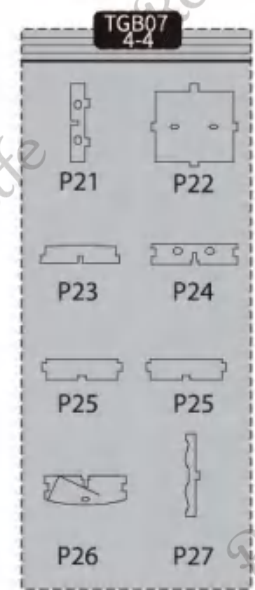
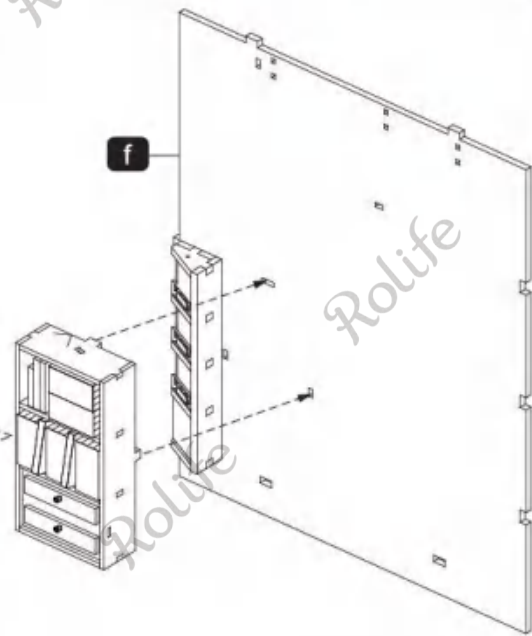
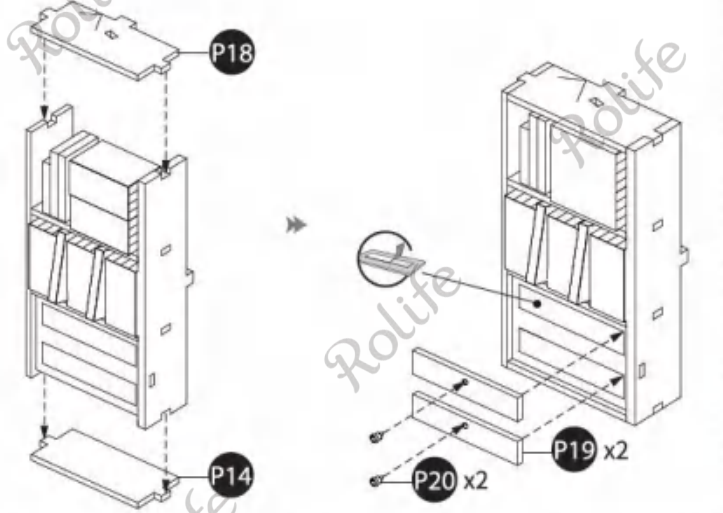
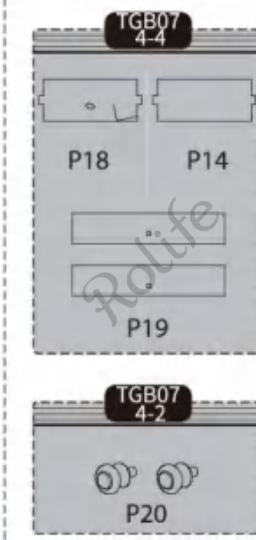
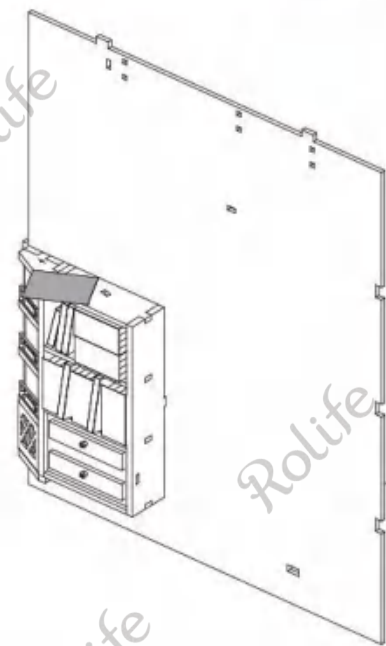
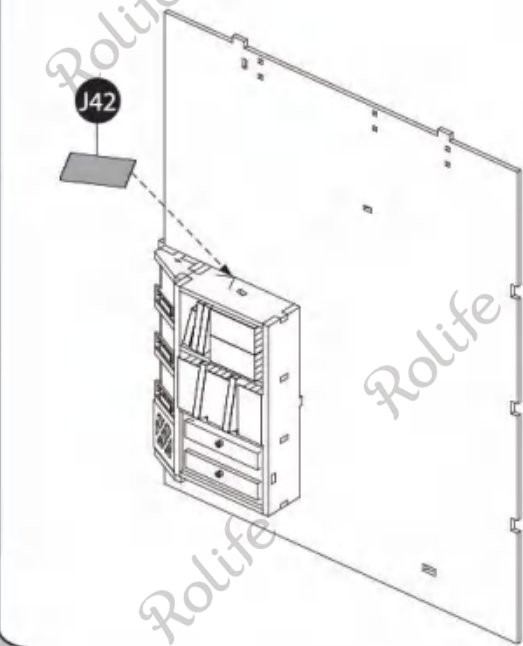
8

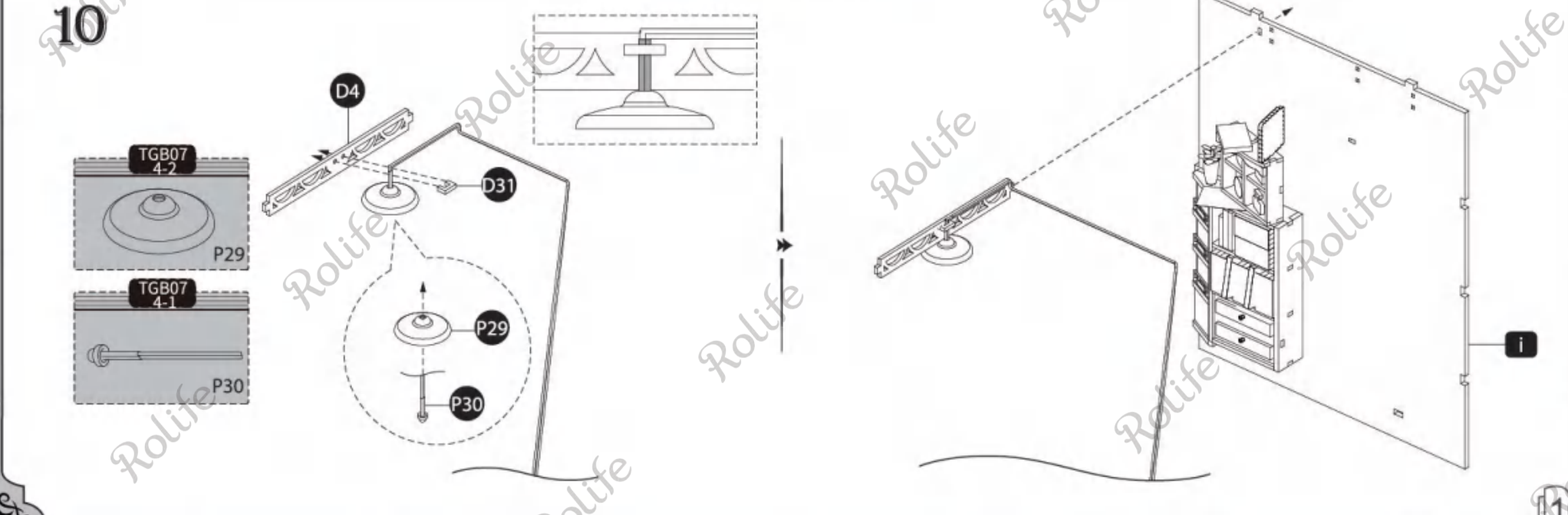
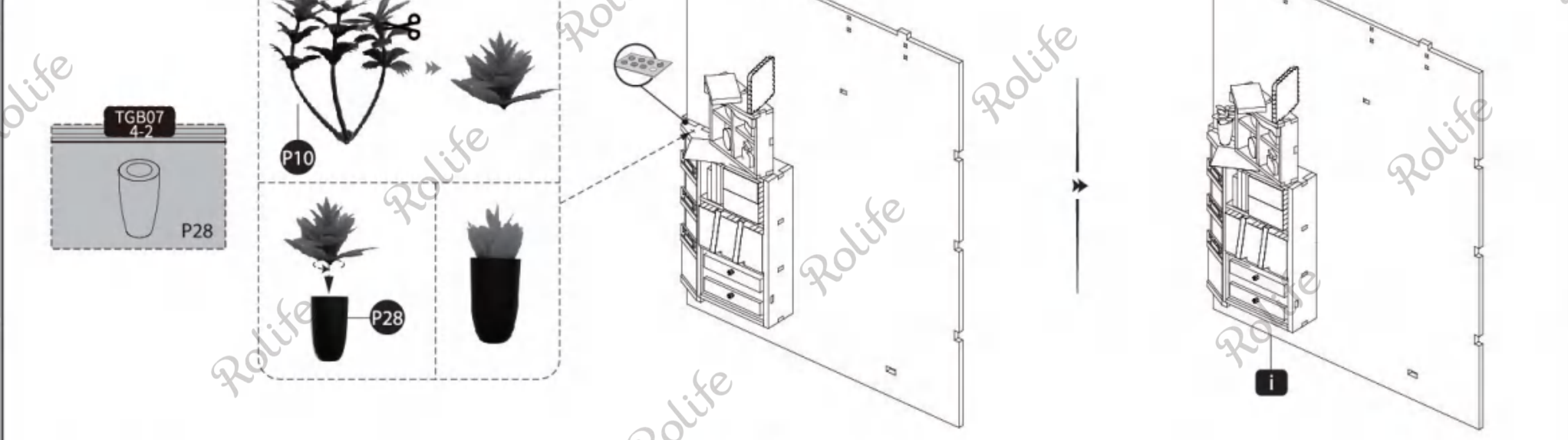
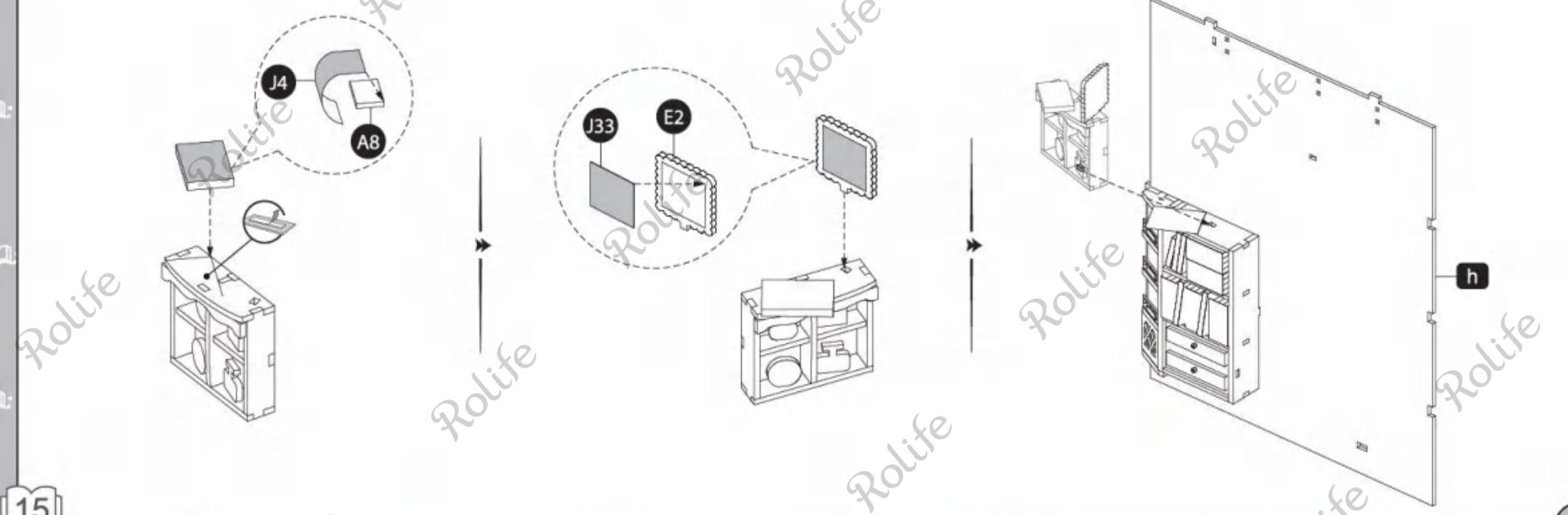
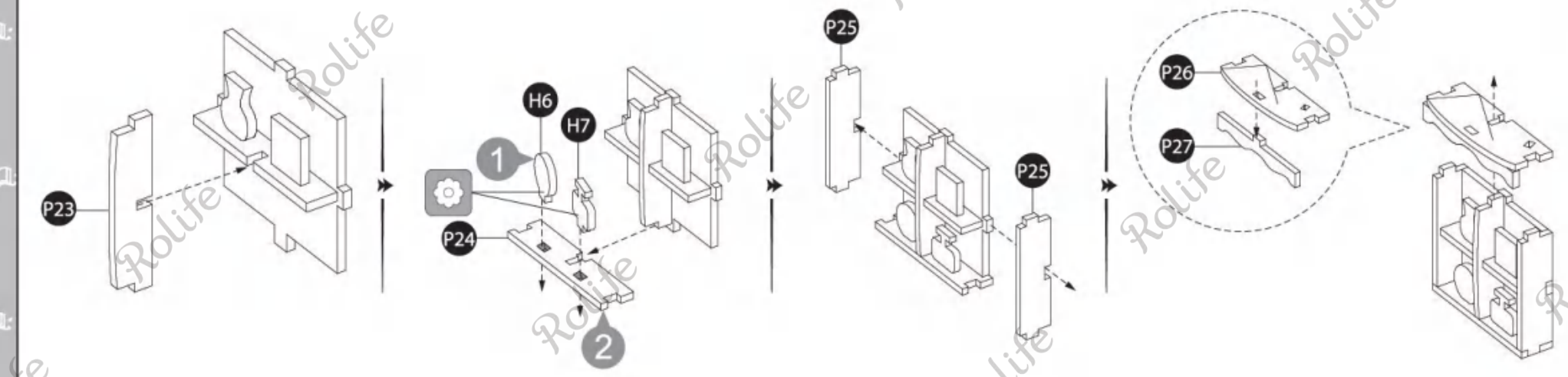


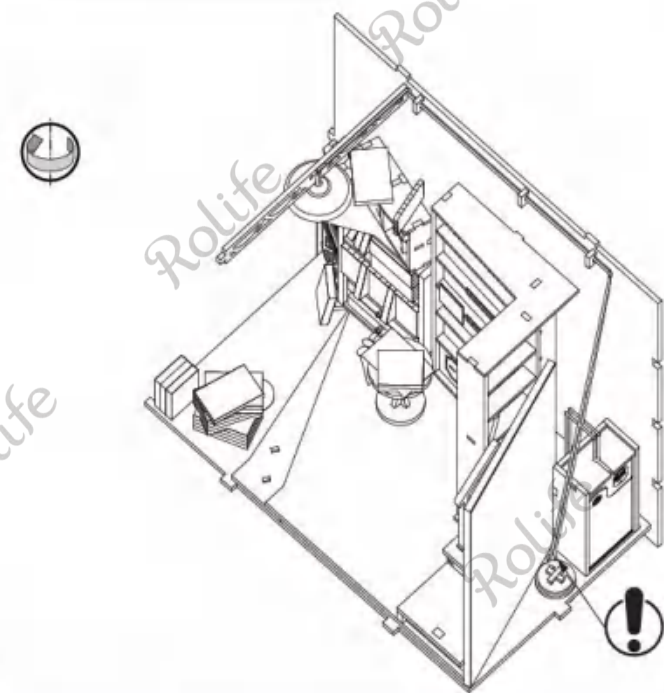
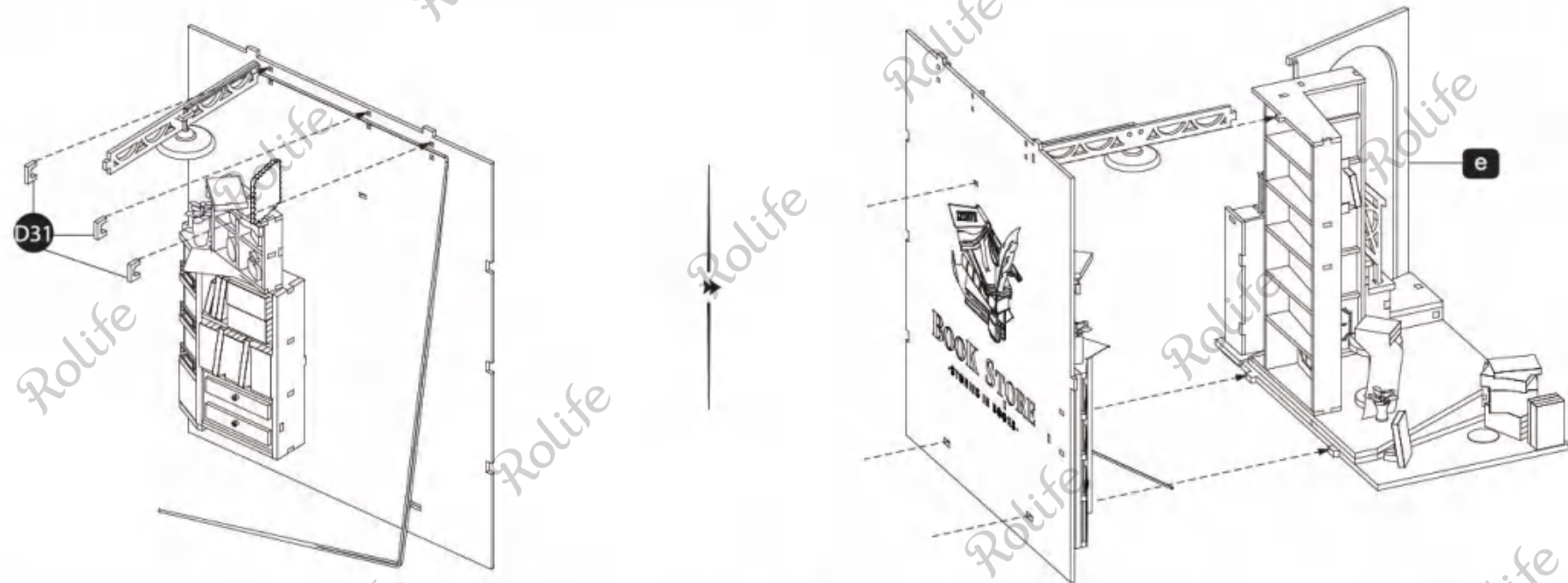
g



9







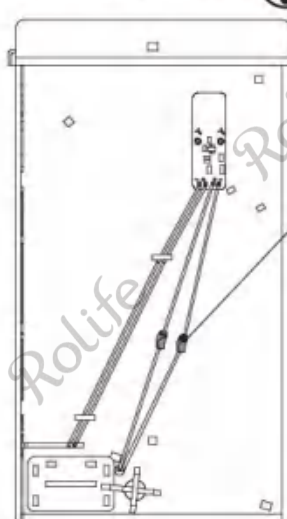
Pass the wire through this hole.



Scan for assembling videos



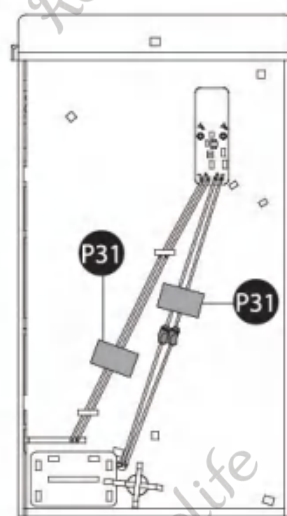
P31



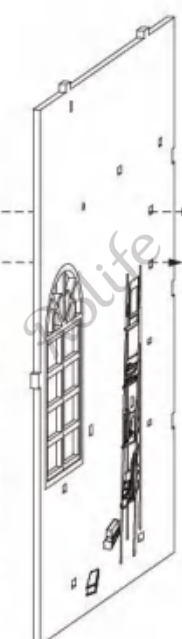
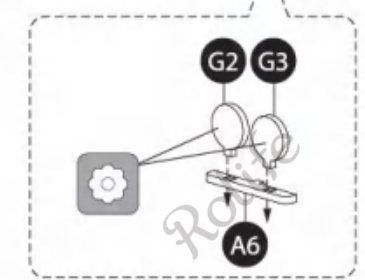
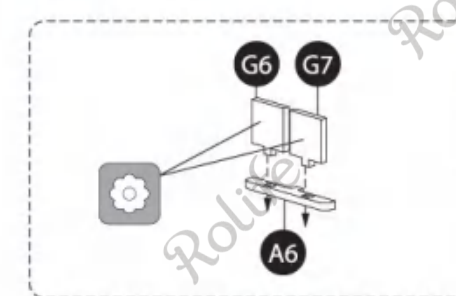
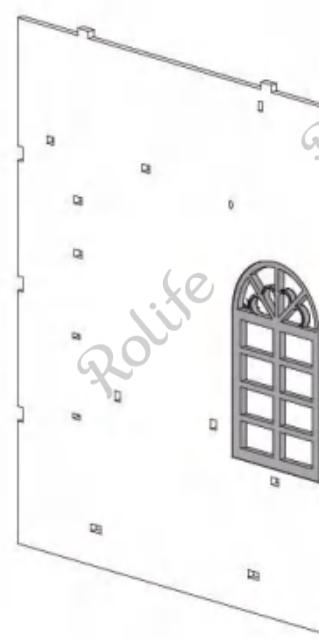
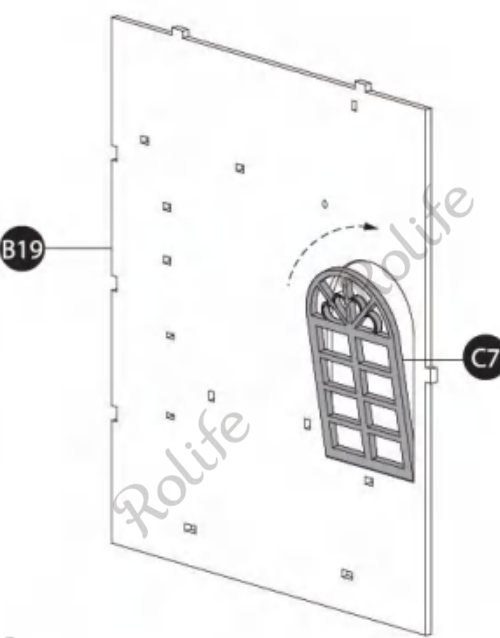
Connect wires with the same colors together. Do not connect them incorrectly.



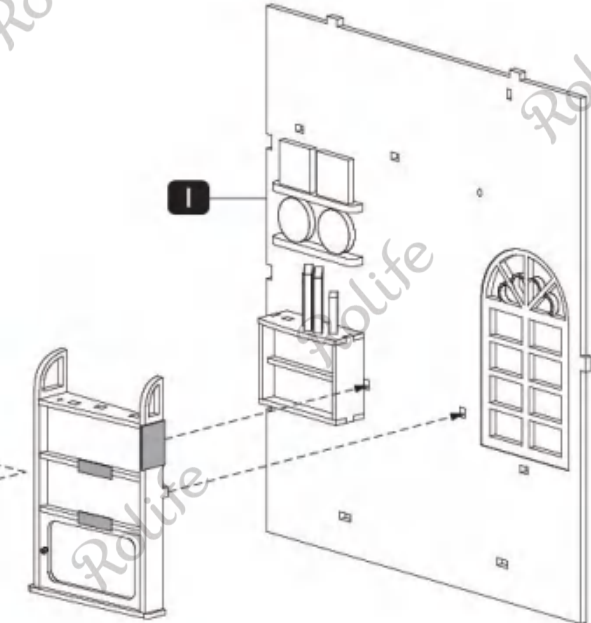
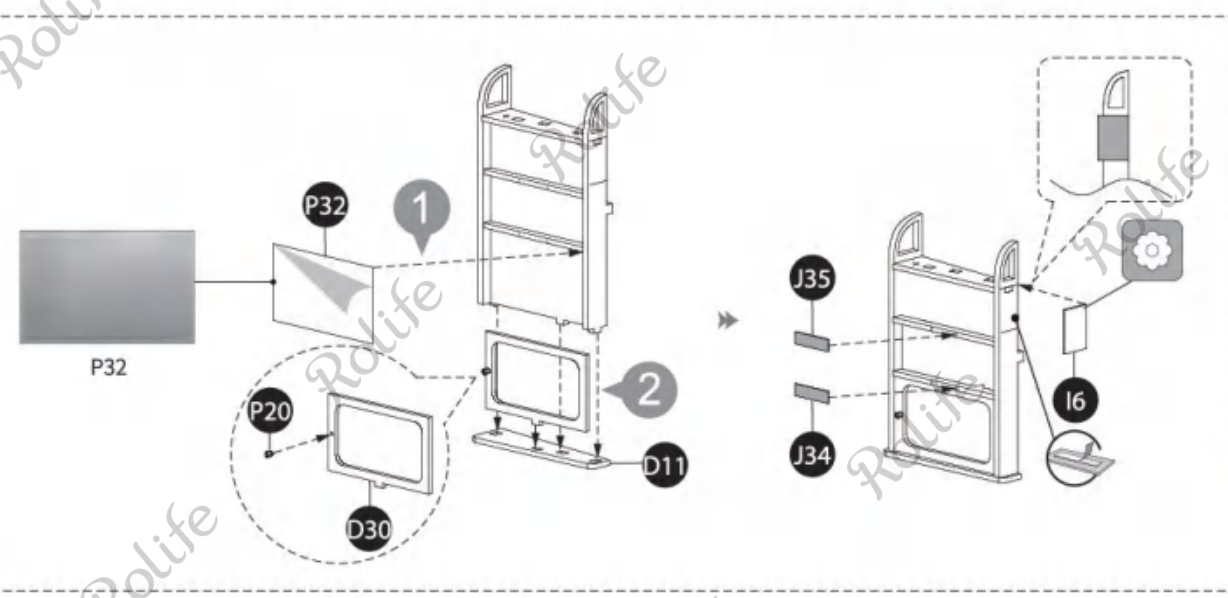
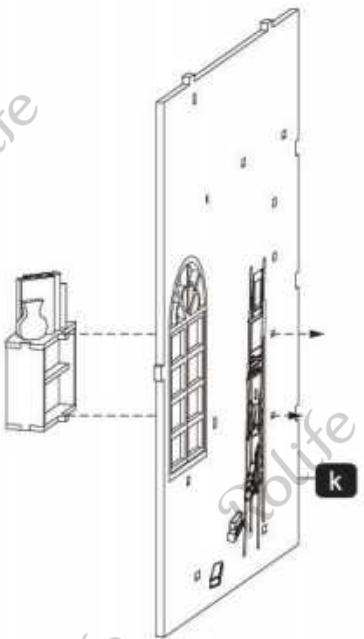
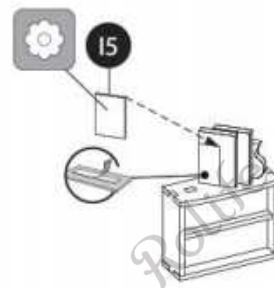
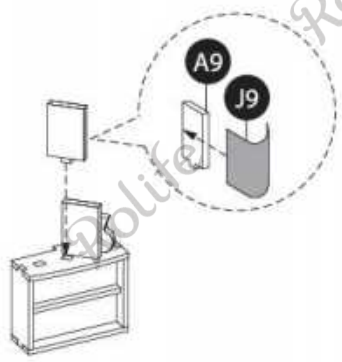
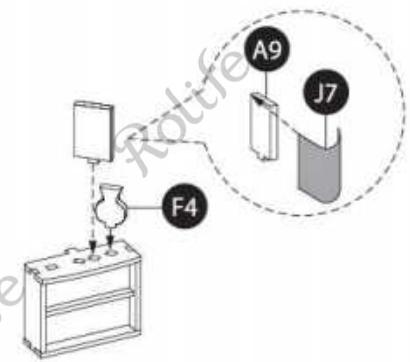
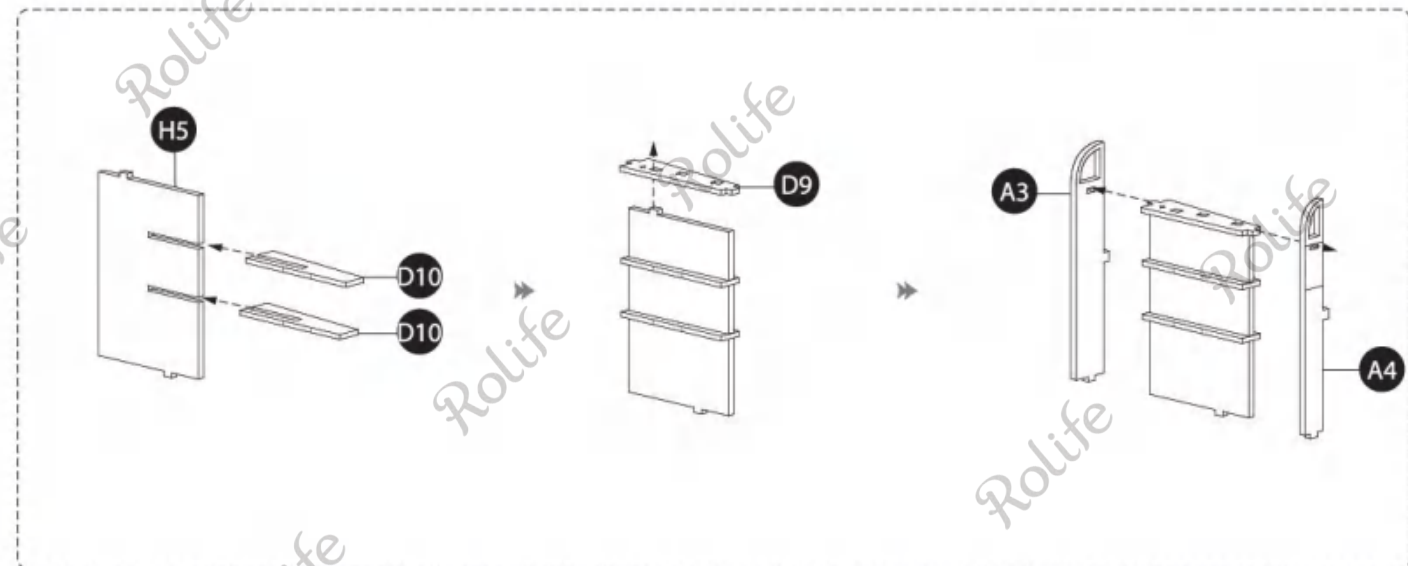
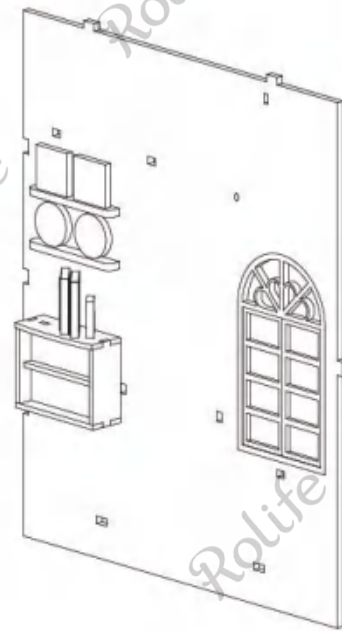
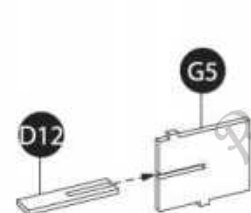
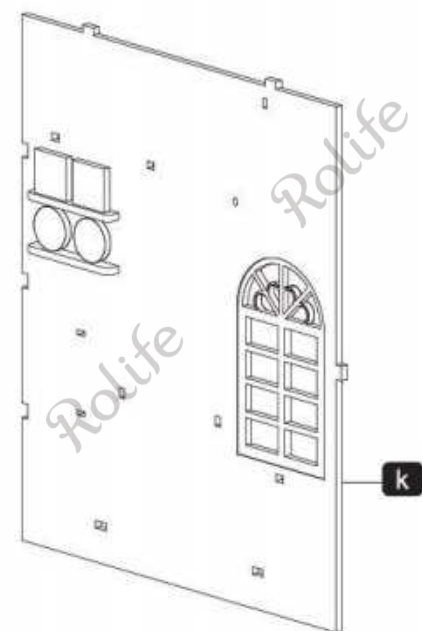
Remove the partial cover of red and black wires before connecting as shown.



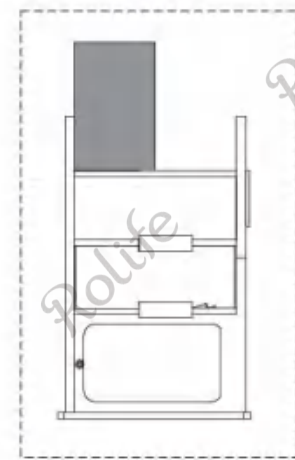
Stick the loose wires onto the bottom with the insulating tape after testing.



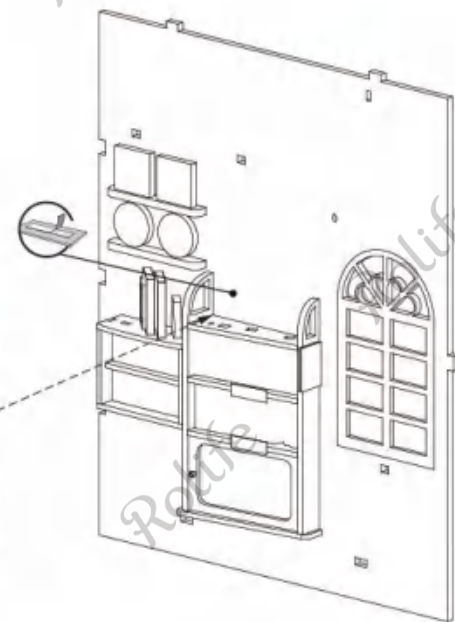
11



Illustration



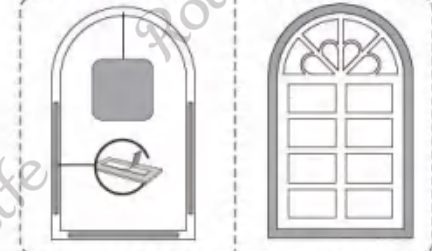
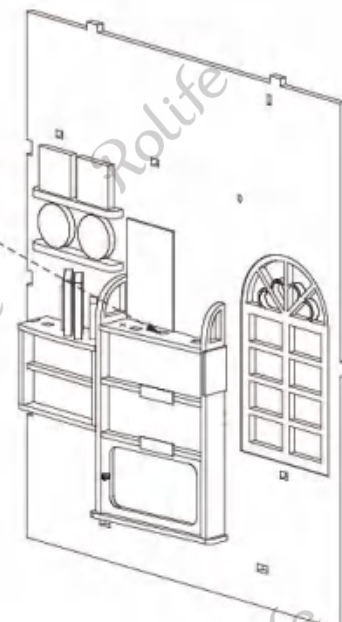
I1



J8



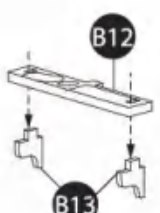
A9



C2

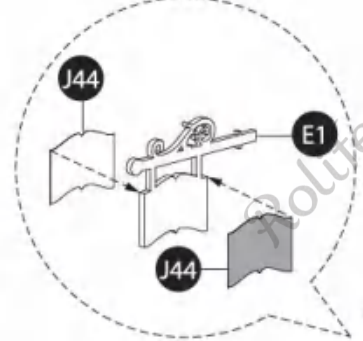


1



B12

B13

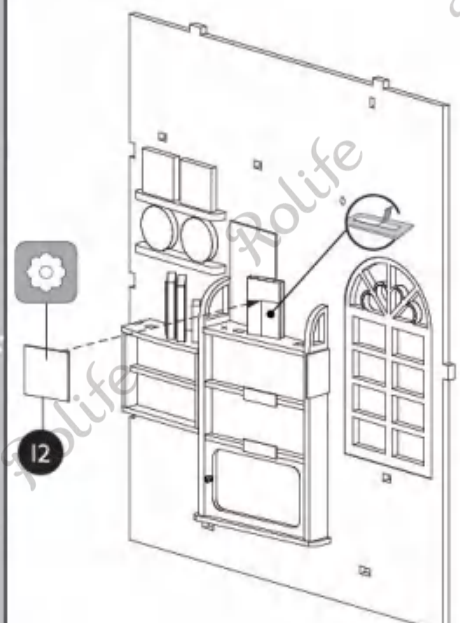
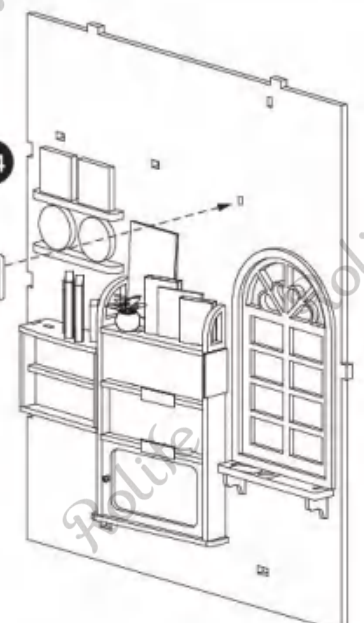


J44

E1

J44

C4



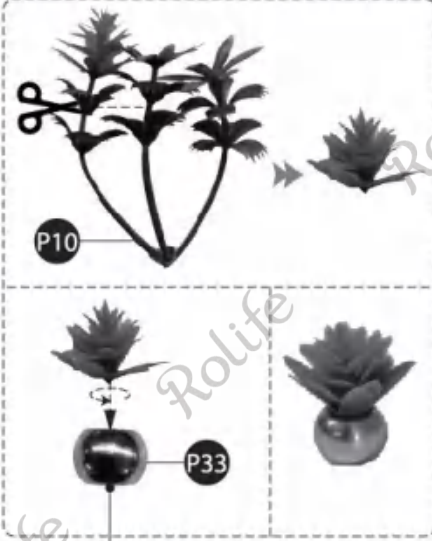
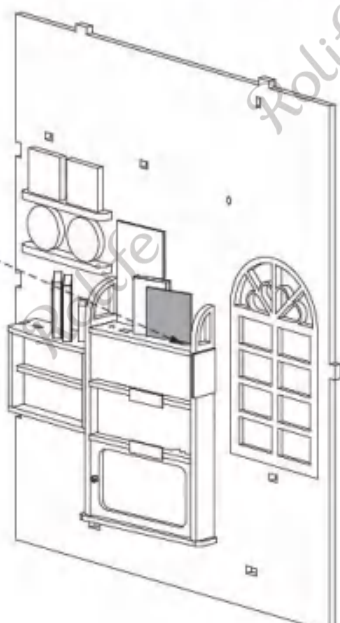
I2



J15



A12

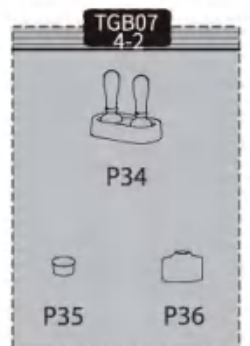
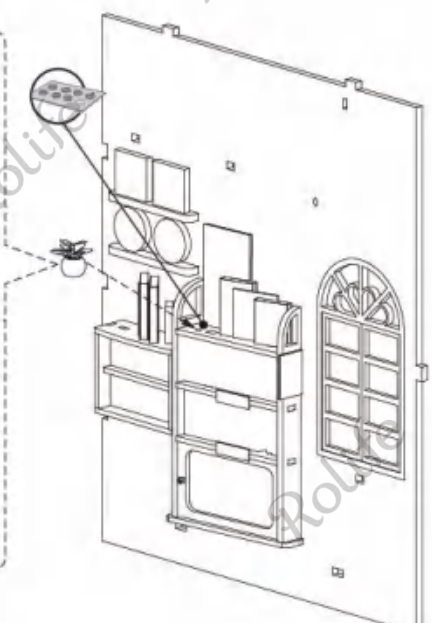


P10

P33



TGB07 4-2



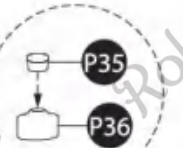
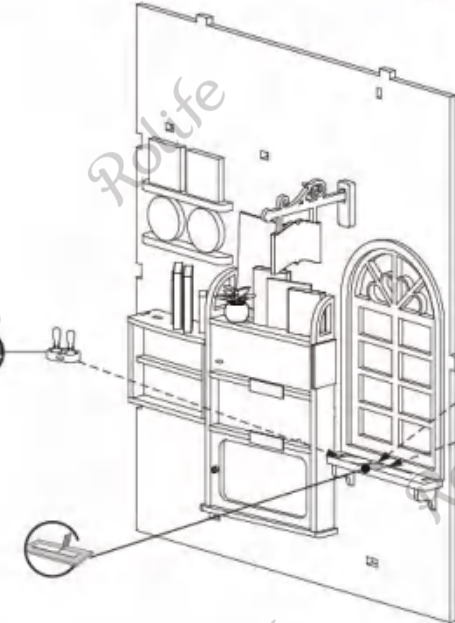
TGB07 4-2

P34

P35

P36

P34



P35

P36

J40

J39

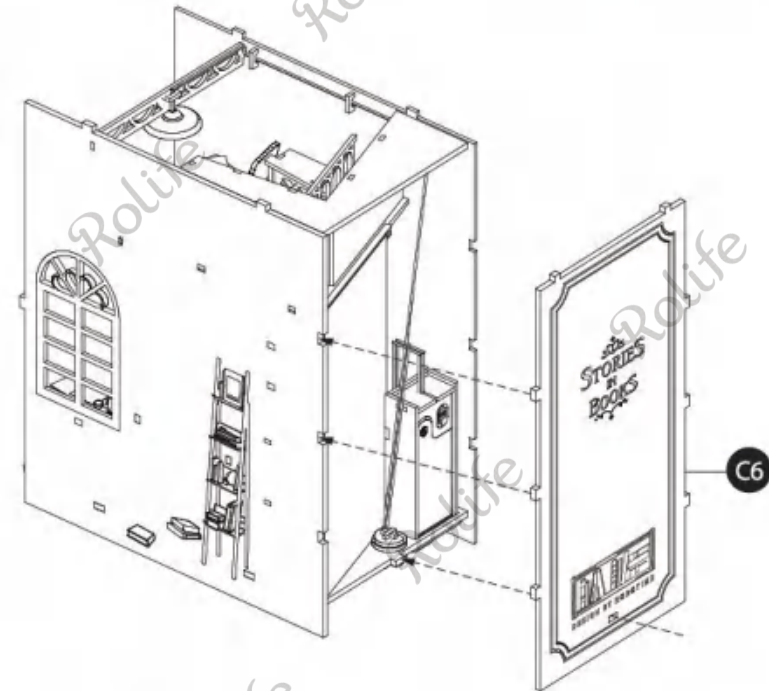
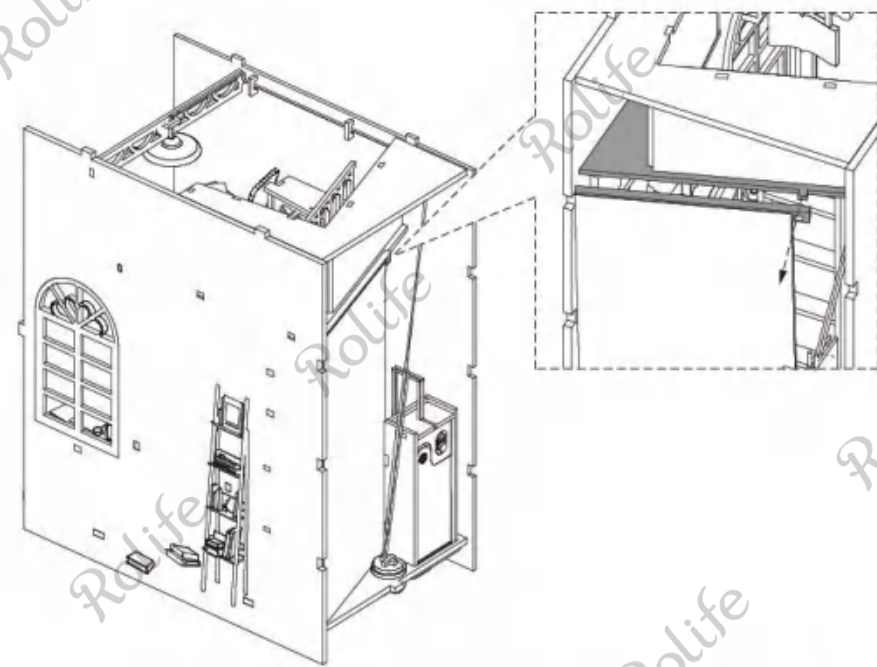
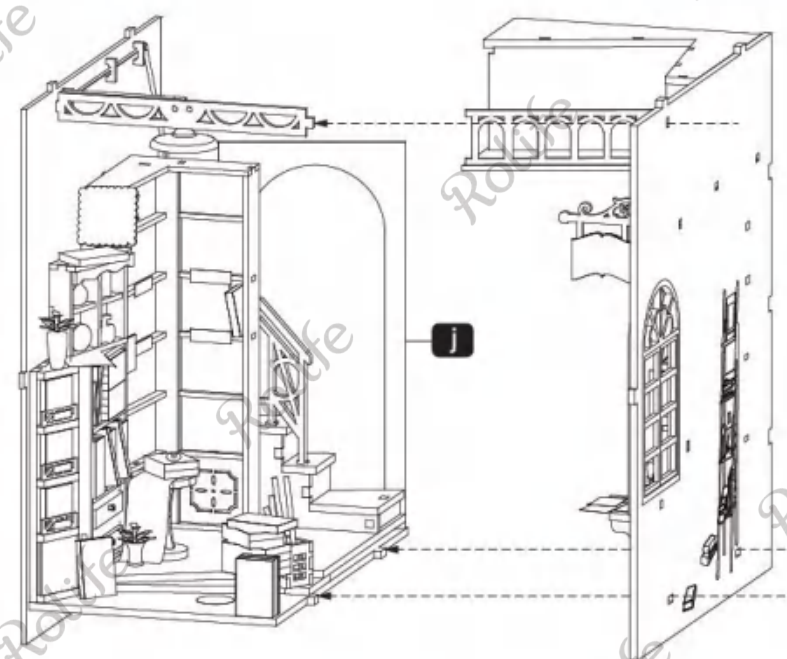
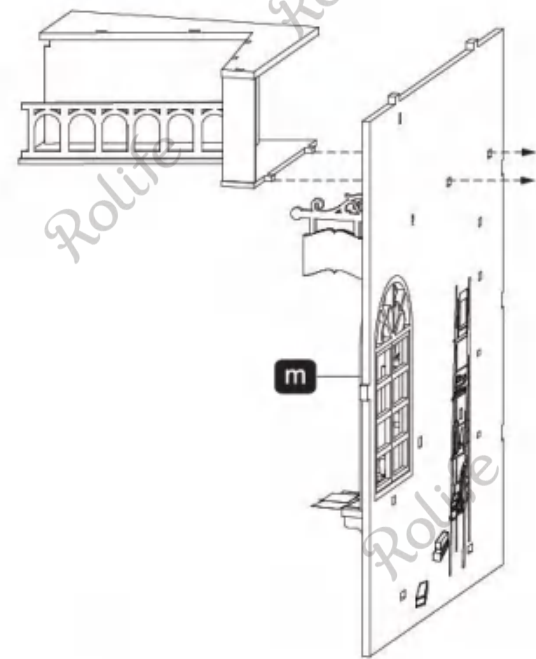
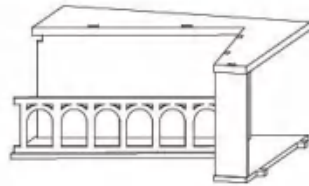
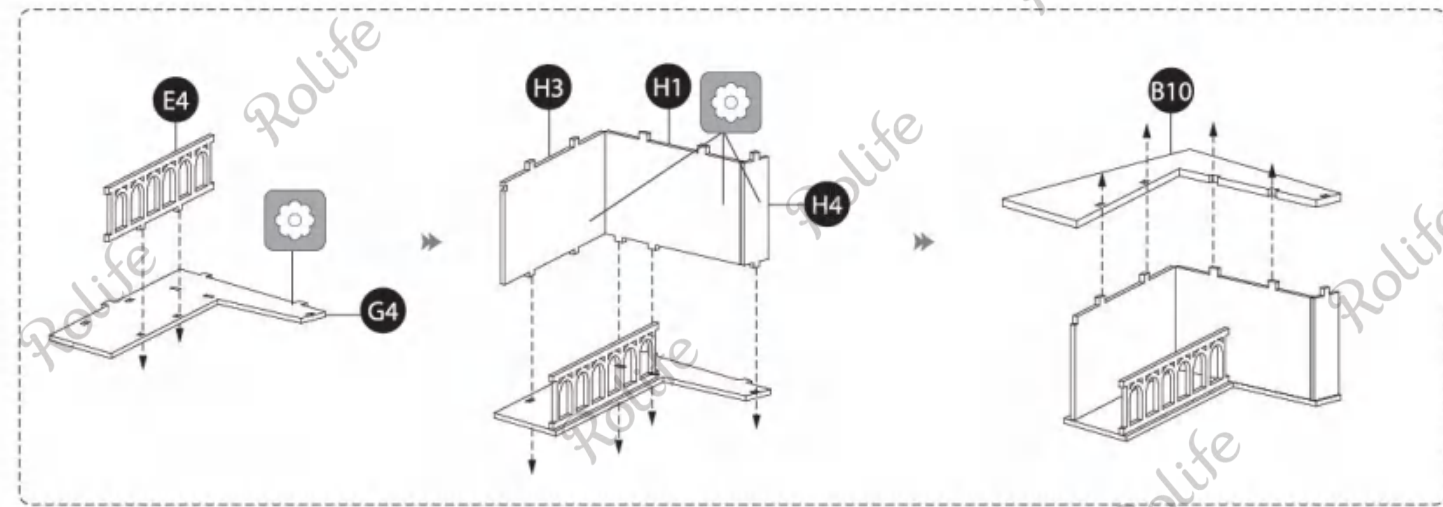
1

J31

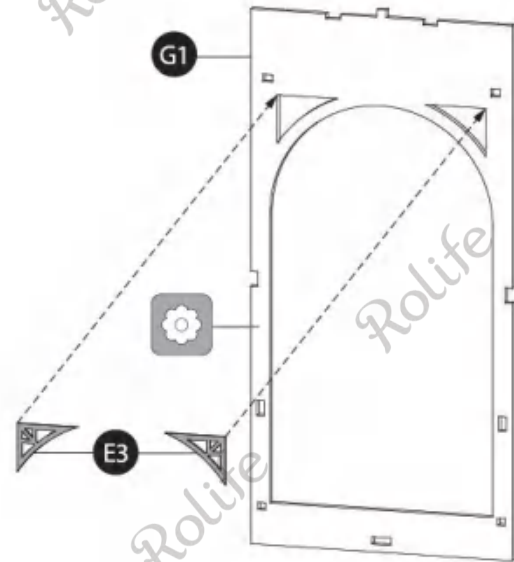
2

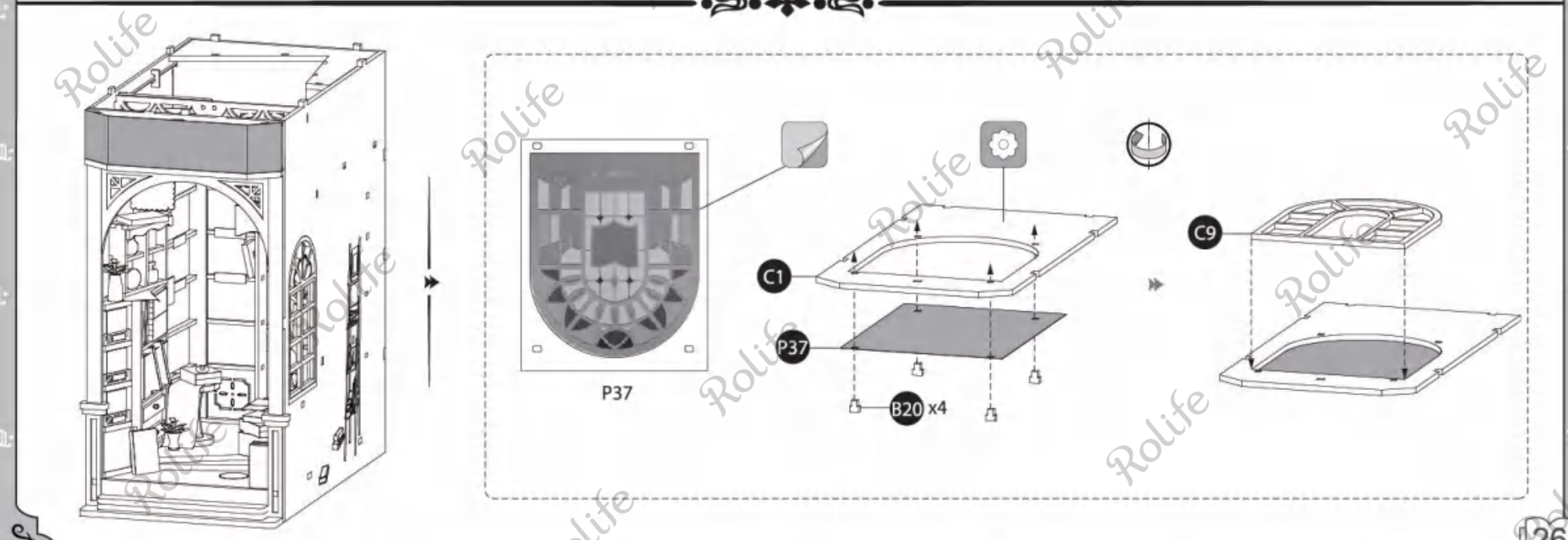
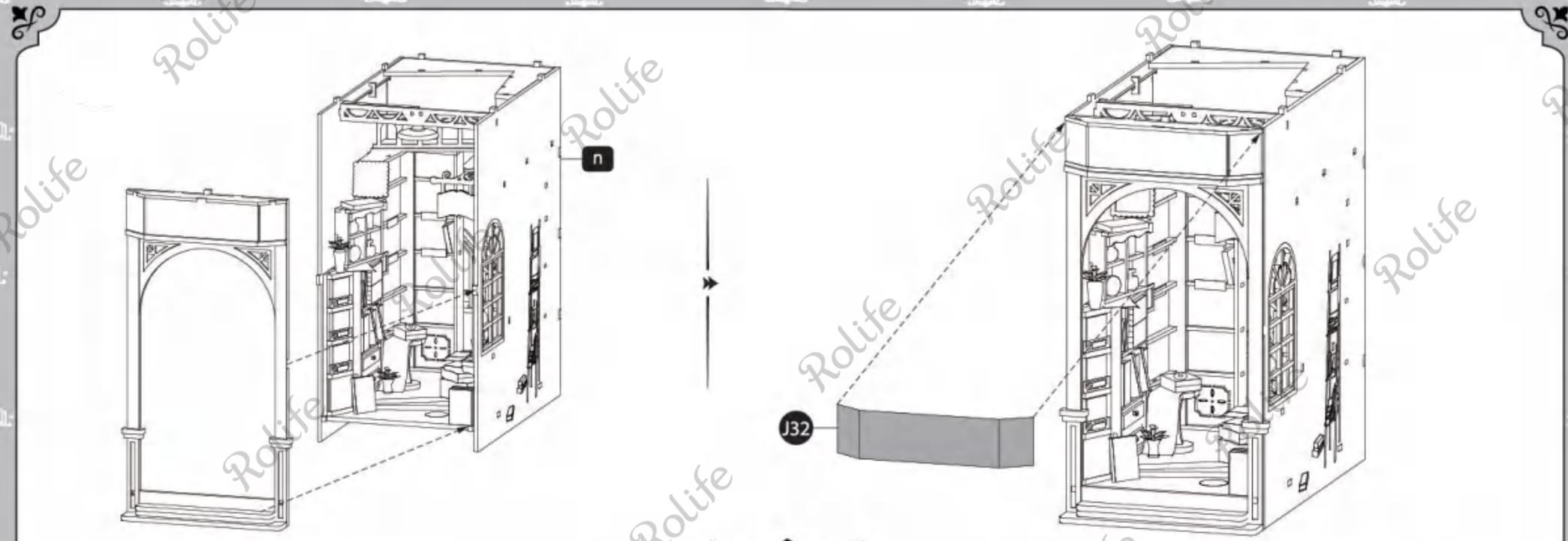
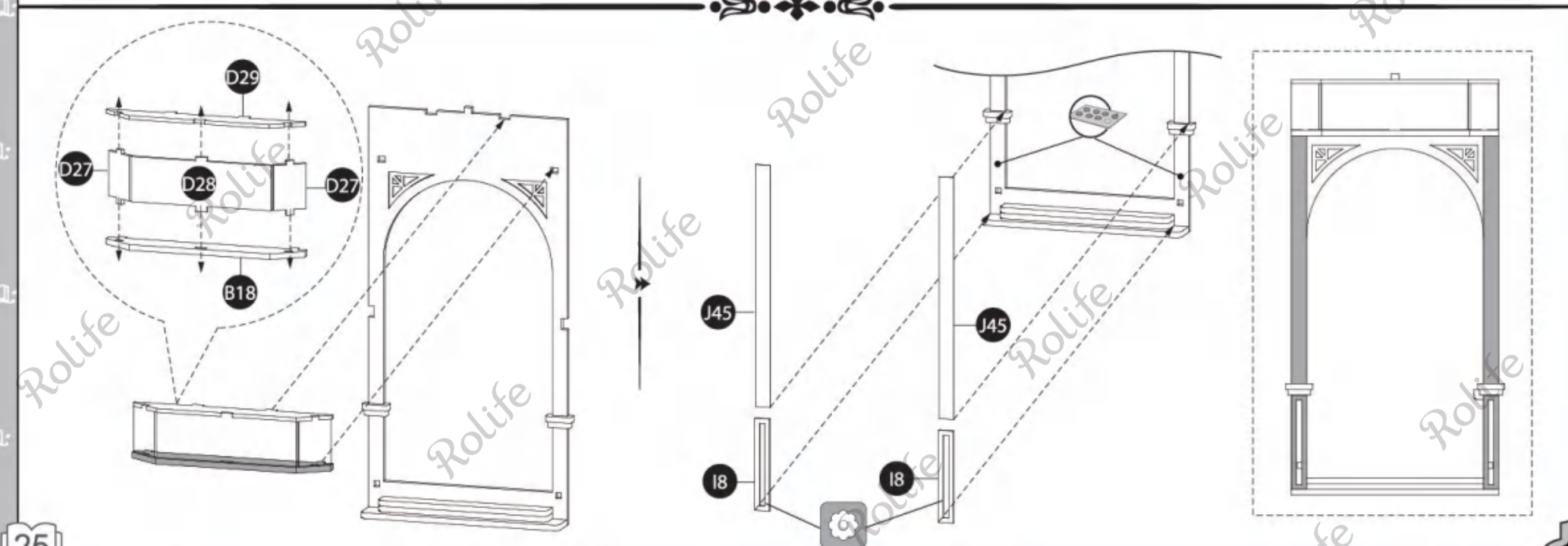
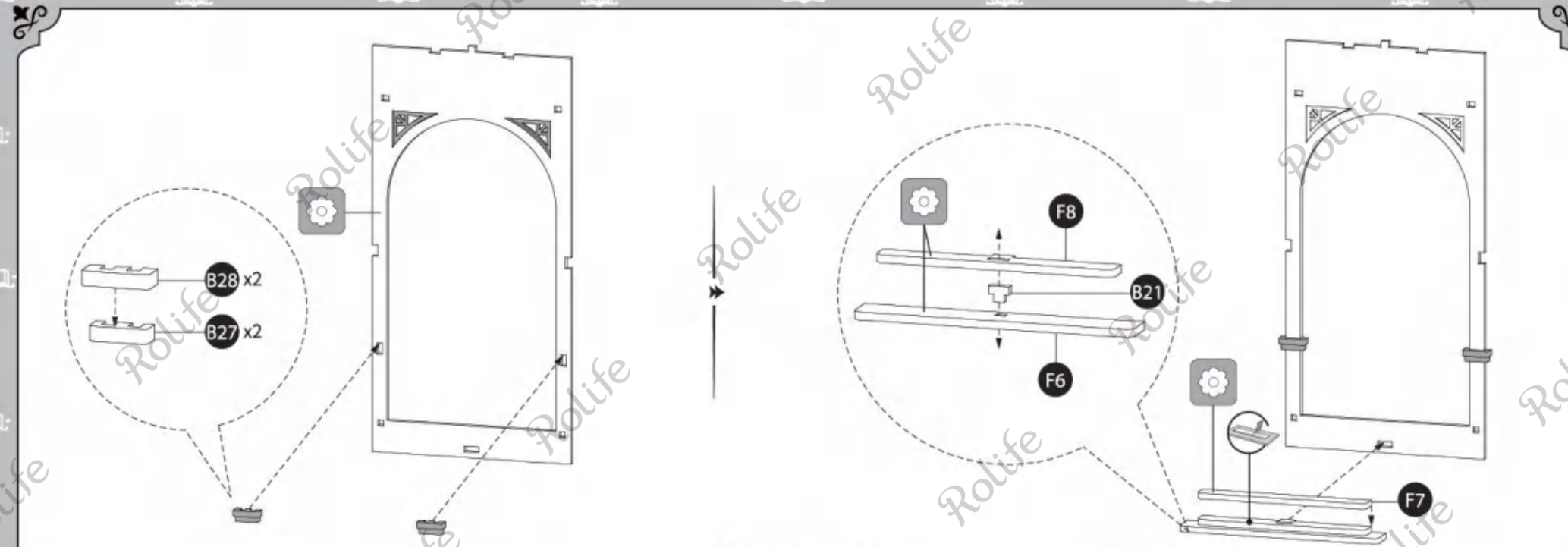


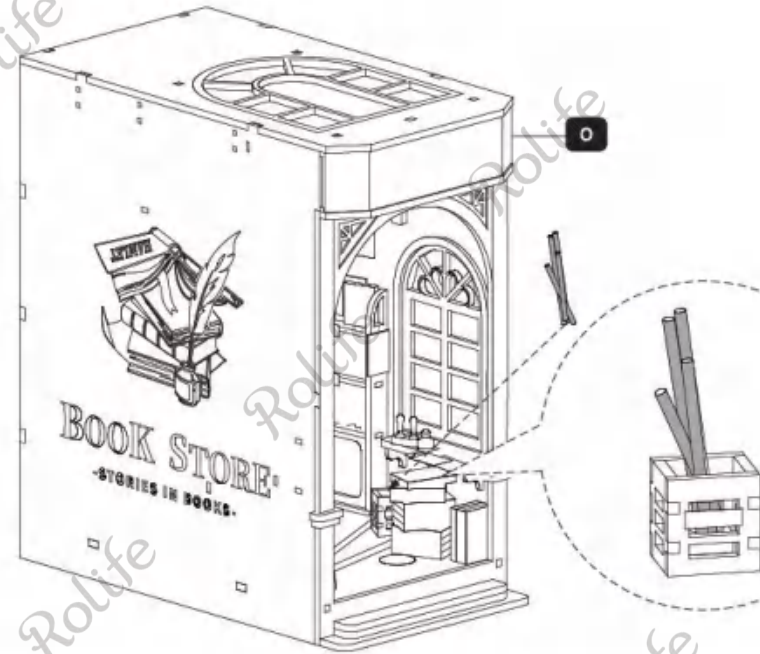
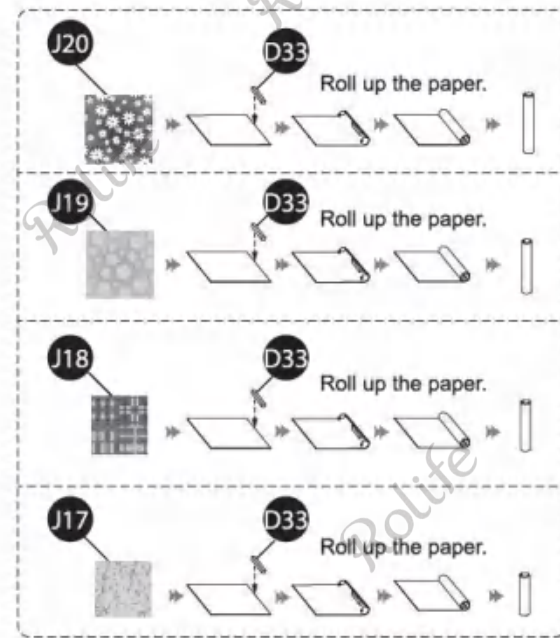
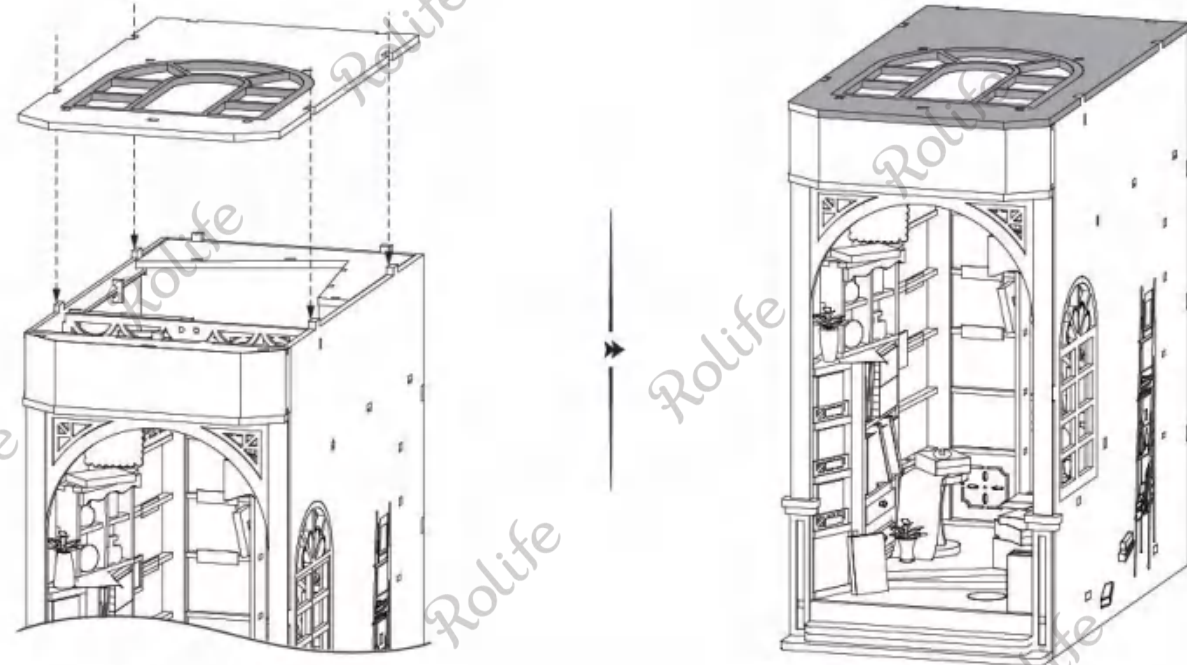
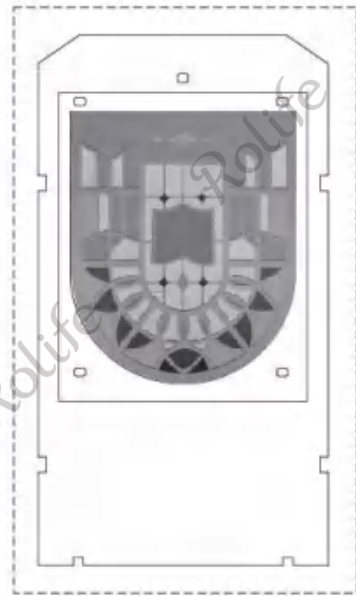
m



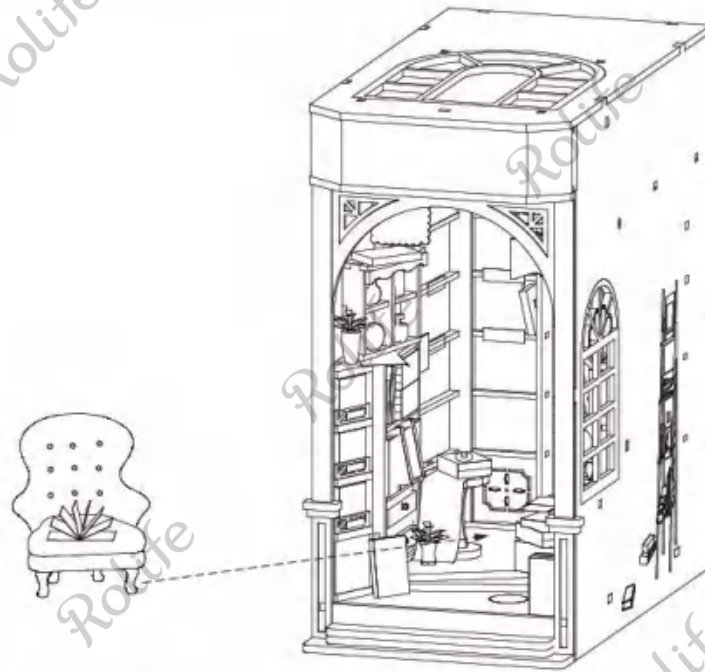
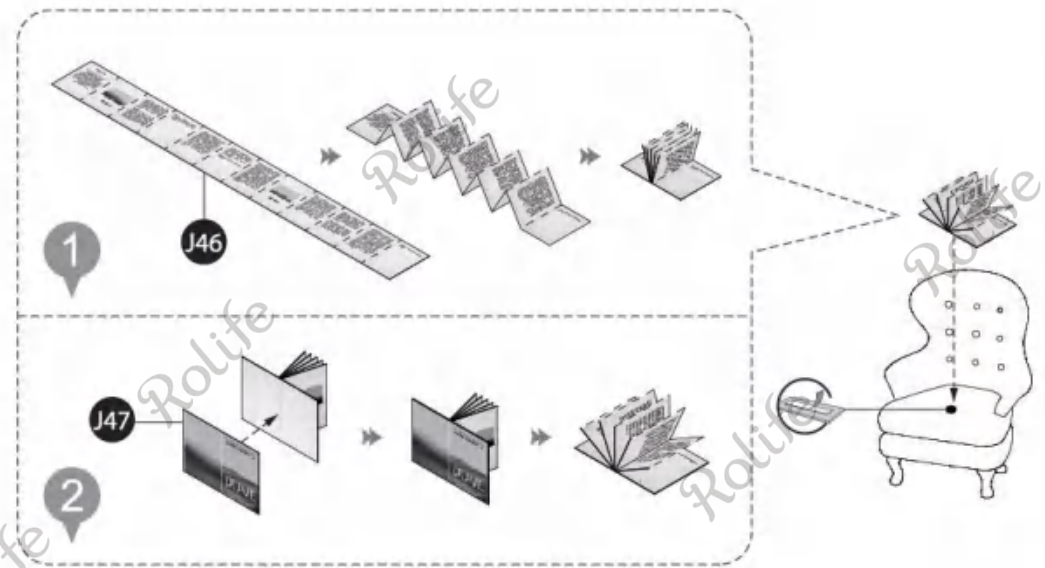
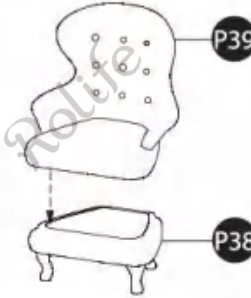
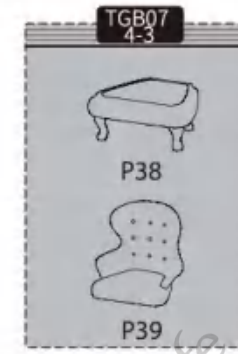
12





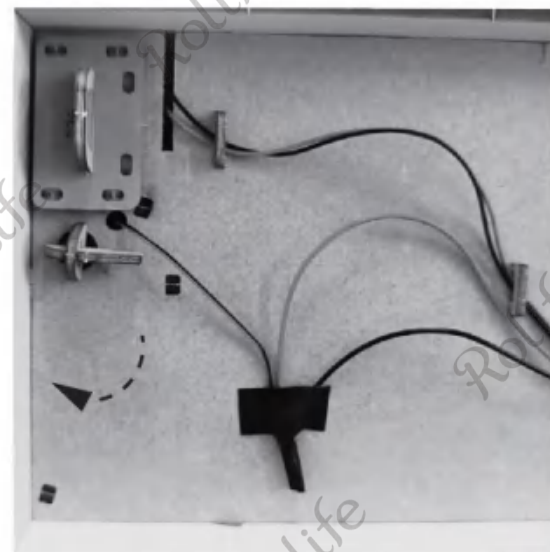


13



Complete.

★ Assembly Instruction



Loosen the screw to replace the battery.

Touch here to turn on the light.



**BOOK NOOK
& WONDERLAND**

BOOKSTORE
• TGB07



ROLIFE Facebook



rolife.robotime.com/



TGB01
Sakura Densya
SIZE:190x115x220mm



TGB02
Sunshine Town
SIZE:185x100x242mm



TGB03
Magic House
SIZE:180x110x240mm



TGB04
Time Travel
SIZE:184x98x250mm



TGB05
Falling Sakura
SIZE:187x101x242mm



TGB06
Garden House
SIZE:203x110x241mm