

Rolife

# Magic House

TGB03



Designed by **ROBOTIME**  
[www.robotime.com](http://www.robotime.com)  
MADE IN CHINA  
49.2TGB03.100.B



Pictures for reference only. Please subject to our existing products.



## ⚠ WARNING

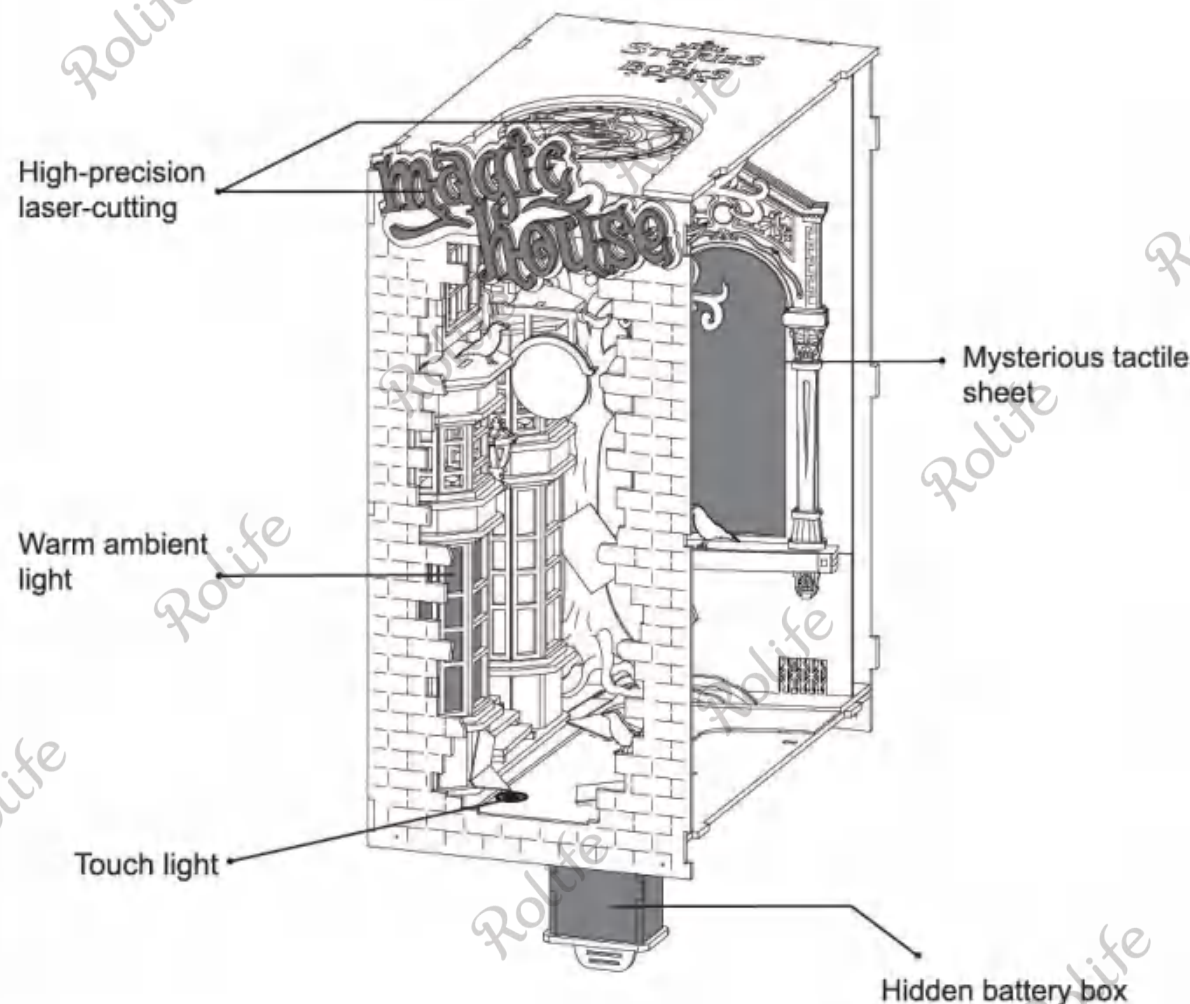
- The product requires 2 "AAA/LR03/AM4 1.5V" batteries (batteries for self-preparation).
- Before loading or removing batteries, please loosen screws on the cover of the battery box with the screwdriver first.
- Non-rechargeable batteries are not to be recharged.
- Rechargeable batteries are only to be charged under adult supervision.
- Rechargeable batteries are to be removed from the toy before being charged.
- Different types of batteries or new and used batteries are not to be mixed.
- Batteries are to be inserted with the correct polarity (+ and -).
- Remove the exhausted battery in time.
- The power supply terminal cannot be short circuited.
- Do not connect the wire to a mains outlet.
- The product is not to be connected to more than the recommended number of power supplies.
- Check each part before assembly. If the part is damaged, fix it well before assembly.
- Please keep the product away from substances flammable and humid environments to prevent damage.
- The instruction must be retained since it contains important information.

## ⚠ ATTENTION

- Some small parts and electronic components are included, and children must assemble under the guidance and supervision of adults in case of swallowing by mistake or choking.
- Some auxiliary tools are required to assemble. Please choose reasonably to avoid injury.
- Please read the instructions carefully before assembly to confirm that the parts are not damaged or missing.
- Please carefully cut the parts and make sure they are firmly pasted when using glue.
- Please install the electronic components correctly and test whether the circuit is normal after completion.
- Please don't clean this product with chemical cleaners: alcohol, ammonia water, glass cleaner, etc.
- Please clean the product with clean soft cloth, and sand the board bur lightly with sandpaper.
- Glue is a gift not for sale. If it becomes dry or excessive glue due to time or environmental problems, you can use your own glue to assemble.

★ Due to customs policy in international shipping, the batteries, glue or pigment may not be included. Please prepare them yourself.

Equipped with 4 controllable lights



## Parts list

Bag No.1

Name	Battery box
No.	P1
Picture	
Quantity	1

Bag No.2

Name	Battery box	Warm light lamp (150)	Warm light lamp (400)	Warm light lamp (600)	Blue light lamp (White heat-shrink tube)
No.	P1	P2	P3	P4	P5
Picture					
Quantity	1	1	1	1	1

Bag No.3

Name	Screwdriver	Lampshade	Tape	Angle iron	Screw
No.	P6	P7	P8	P9	P10
Picture					
Quantity	1	1	2	8	18

Bag No.4

Name	Acrylic board	PET1	PET2	Sticker	White latex
No.	P11	P12	P13	P14	P15
Picture					
Quantity	1	1	1	1	1

## Q&A

**Q1: IS THERE ANY DIFFERENCE OF THE HEAT-SHRINK TUBES?**

**A1:** The colors of the light strings are different. For clear distinctions, the white tube is for the blue light and the black tube is for the warm light. So we can tell the difference easily.

**Q2: HOW TO DISTINGUISH THE POSITIVE AND NEGATIVE ELECTRODES OF THE LIGHTS?**

**A2:** The red wire is positive and the black is negative.

**Q3: WHAT SHOULD I DO IF SOME PARTS GET LOOSE?**

**A3:** The notch may get loose if you remove the part from the boards. You can apply some glue to fix it.

**Q4: WHY IS THE PATTERN OF PET BLURRY?**

**A4:** Remove the film of PET on the surface.

**Q5: HOW TO DO WITH THE FALLING DOWN AND DISPLACEMENT OF THE PAPER?**

**A5:** If the glue hasn't dried, add a dab of glue and press over 5s. If applying too much glue, wipe off the excess glue with tissues before it gets dried.

**Q6: WHAT IF I CANNOT GLUE THE ACRYLIC BOARD TIGHTLY?**

**A6:** Apply a dab of glue on line areas. Put it horizontally for 5 mins. You can assemble other parts while waiting.

**Q7: WHAT IF THE LIGHT CANNOT WORK AFTER CONNECTING THE BATTERY BOX THE LIGHT?**

**A7:** 1. First, check if wires connections are wrong (connect the same color wires together). Second, check if you have loaded the batteries properly, and if the switch is turned on. 2. Turn off the battery box switch. Then tear off the insulating tape. Check if the copper wire is broken and reconnect the wires.

## Instructions

1. Differences among P2, P3, P4, P5

Color	P3	P5	
	Black	White	
Length	P2	P3	P4
	Short	Medium	Long

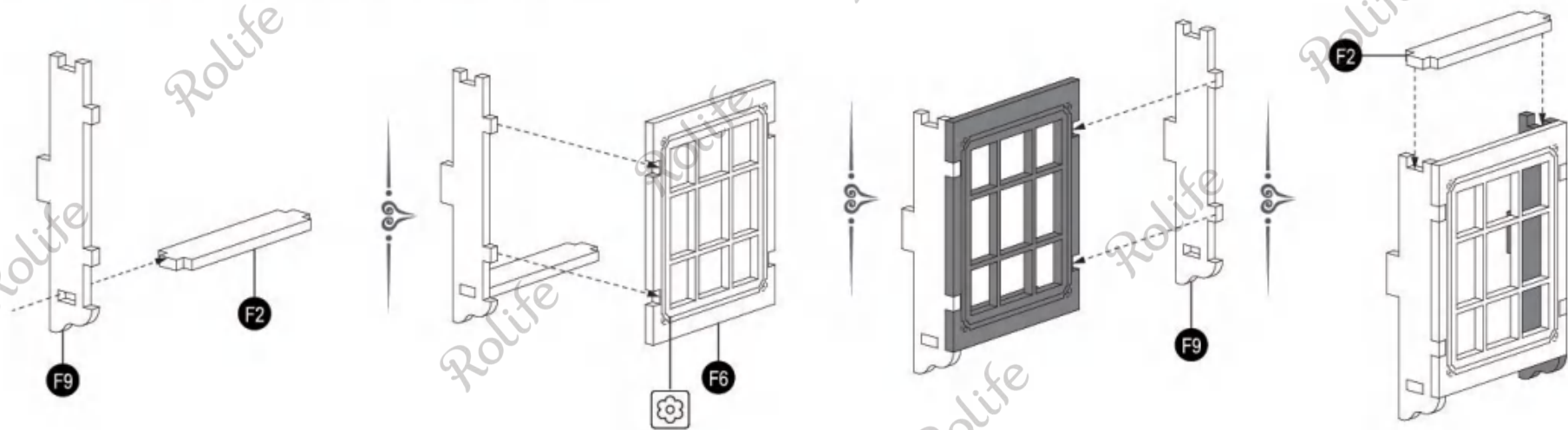
2. Signs illustration

- Step 1 The printed side
  - Step 2 The blank side
  - Step 3 Notice
- Apply a dab of glue here and press 5s

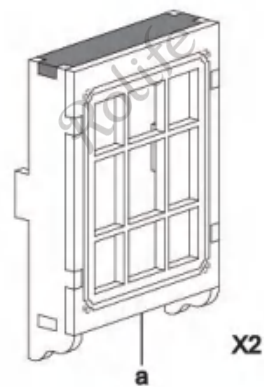


1

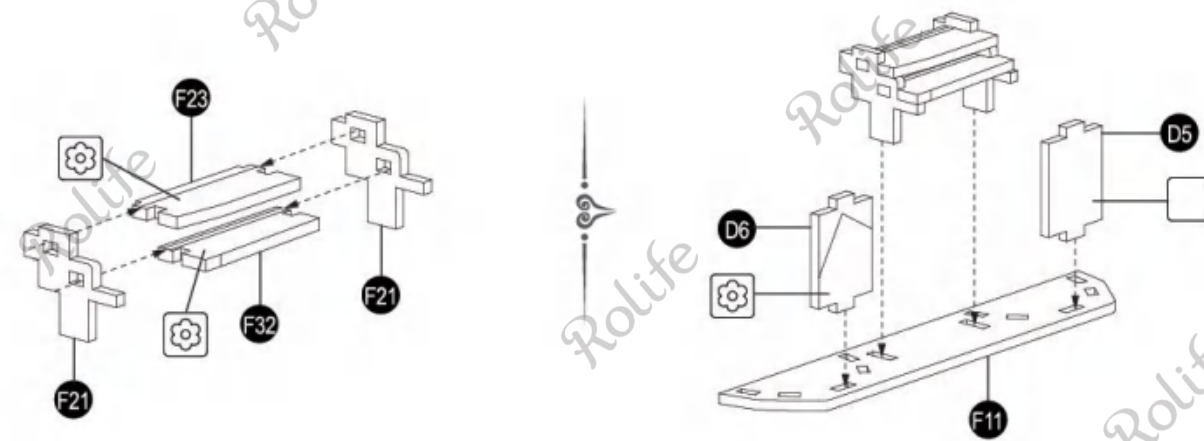
Please read Q&A in the previous page before assembling.



2



Assemble 2 parts a.



Bottom holes position.

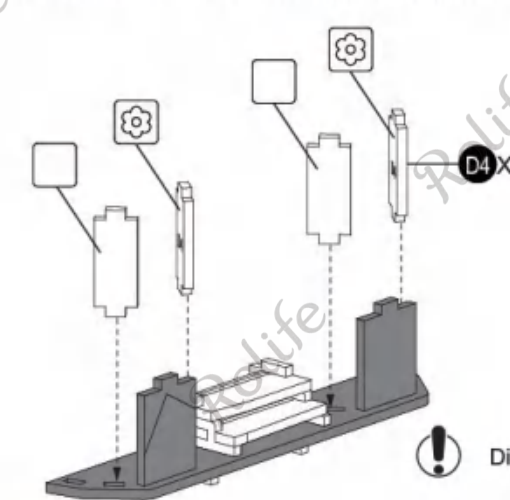
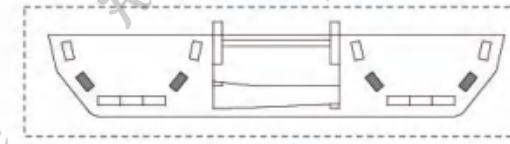
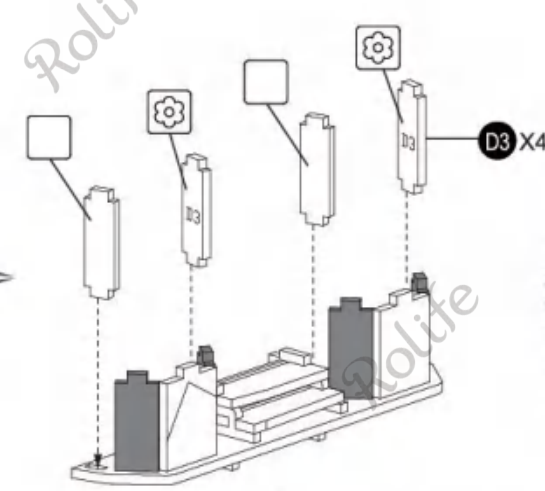
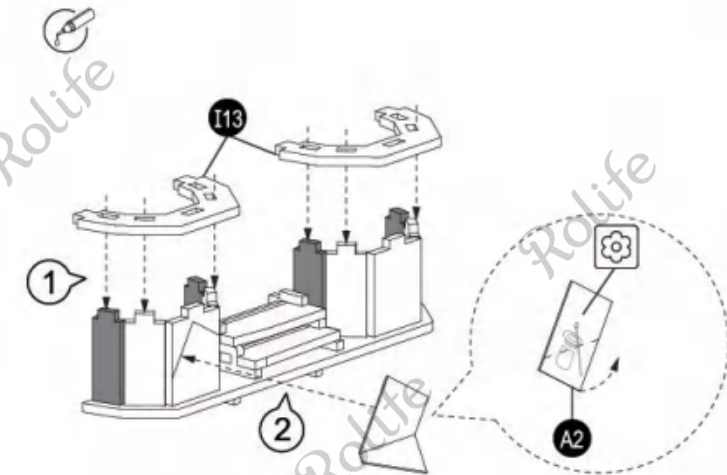


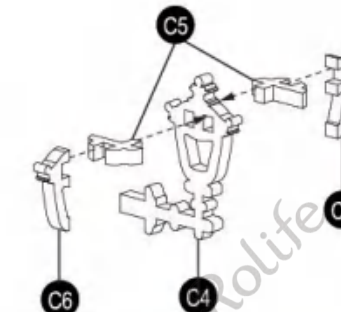
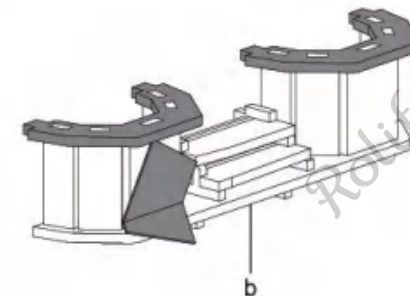
Diagram for holes.



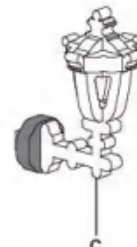
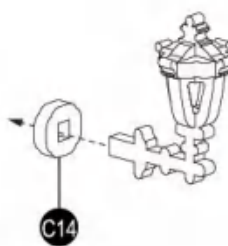
Fold A2 along dashed lines. Glue along reference lines.



3



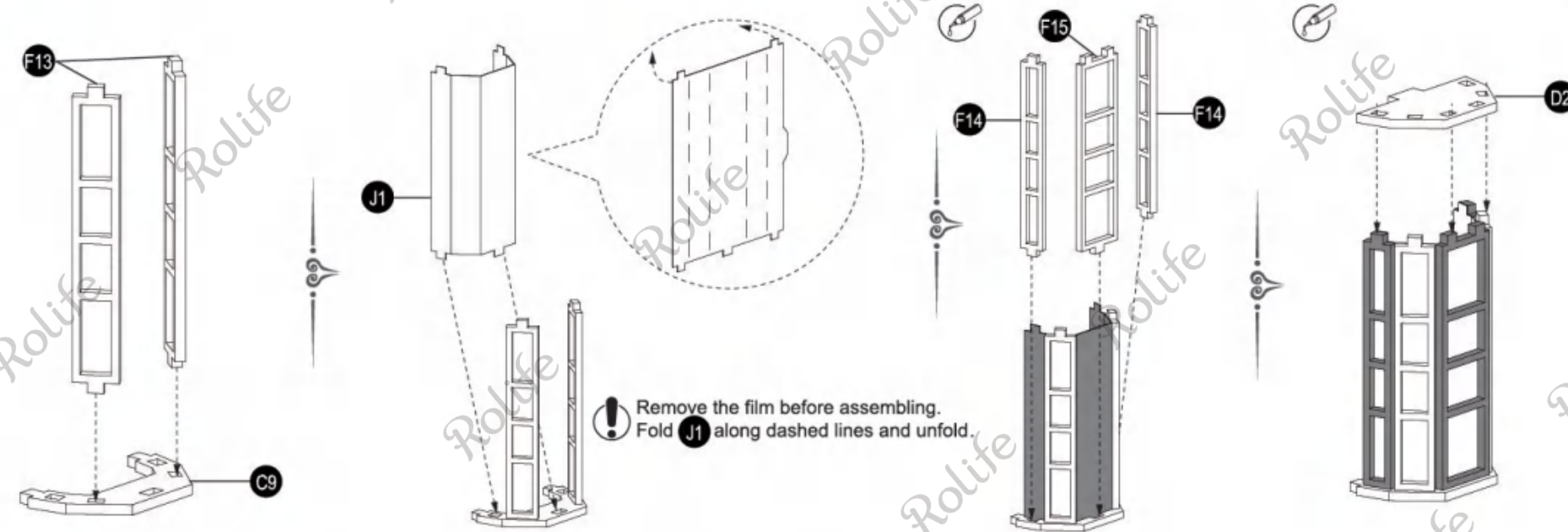
Spare parts for C5 & C6.



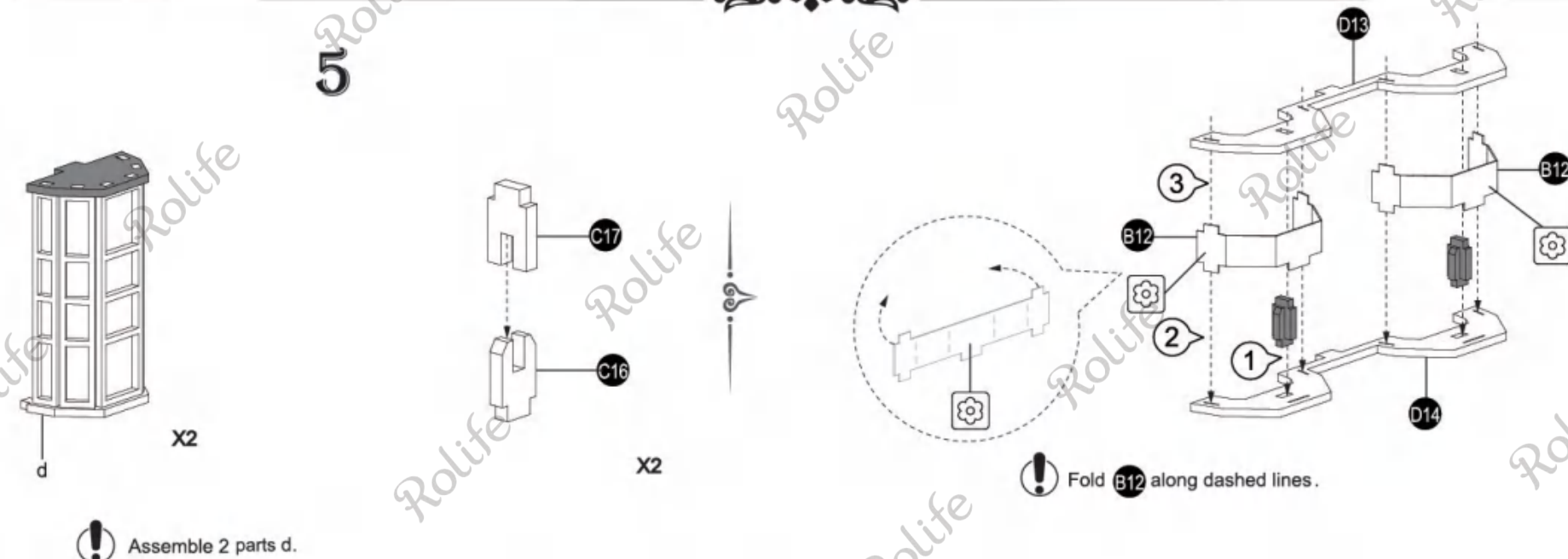
3

4

4

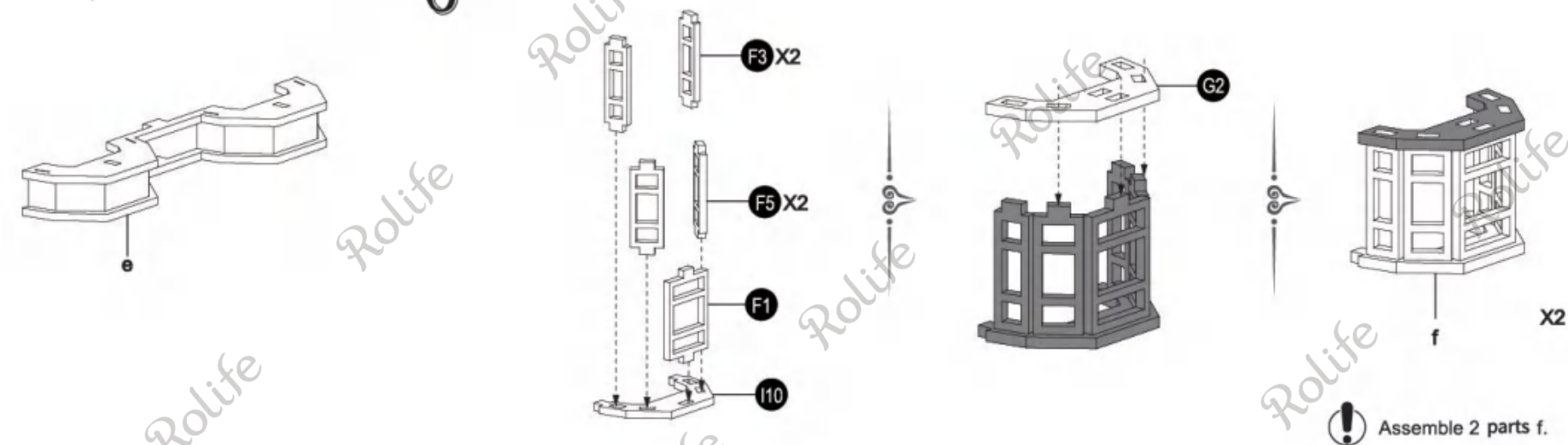


5

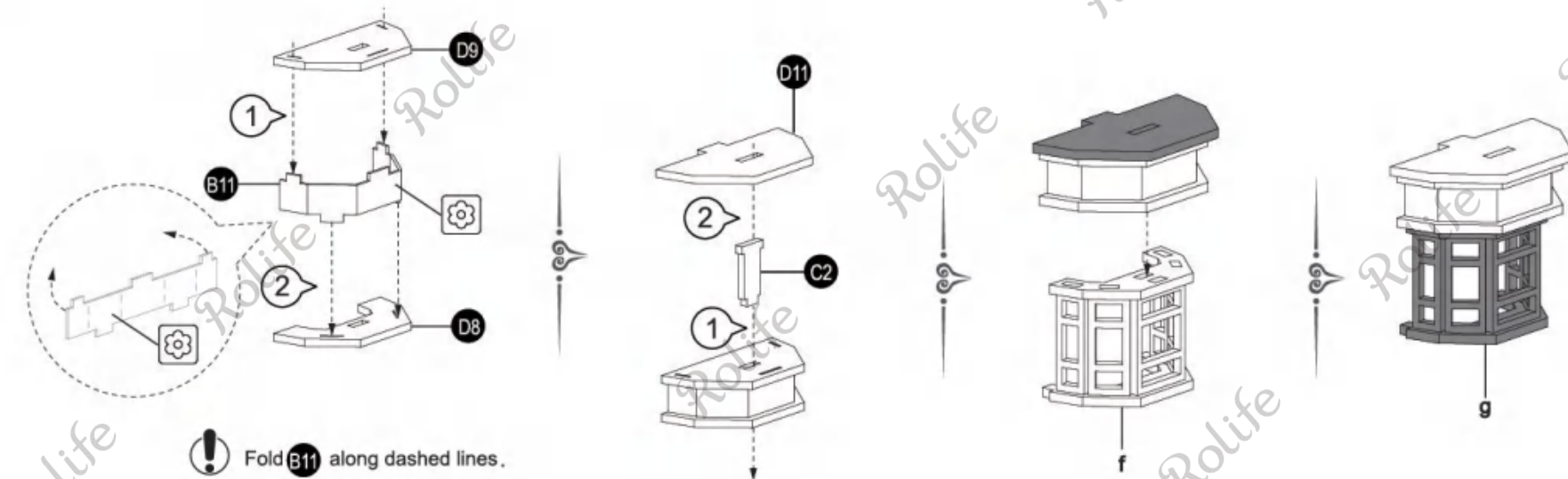


5

6



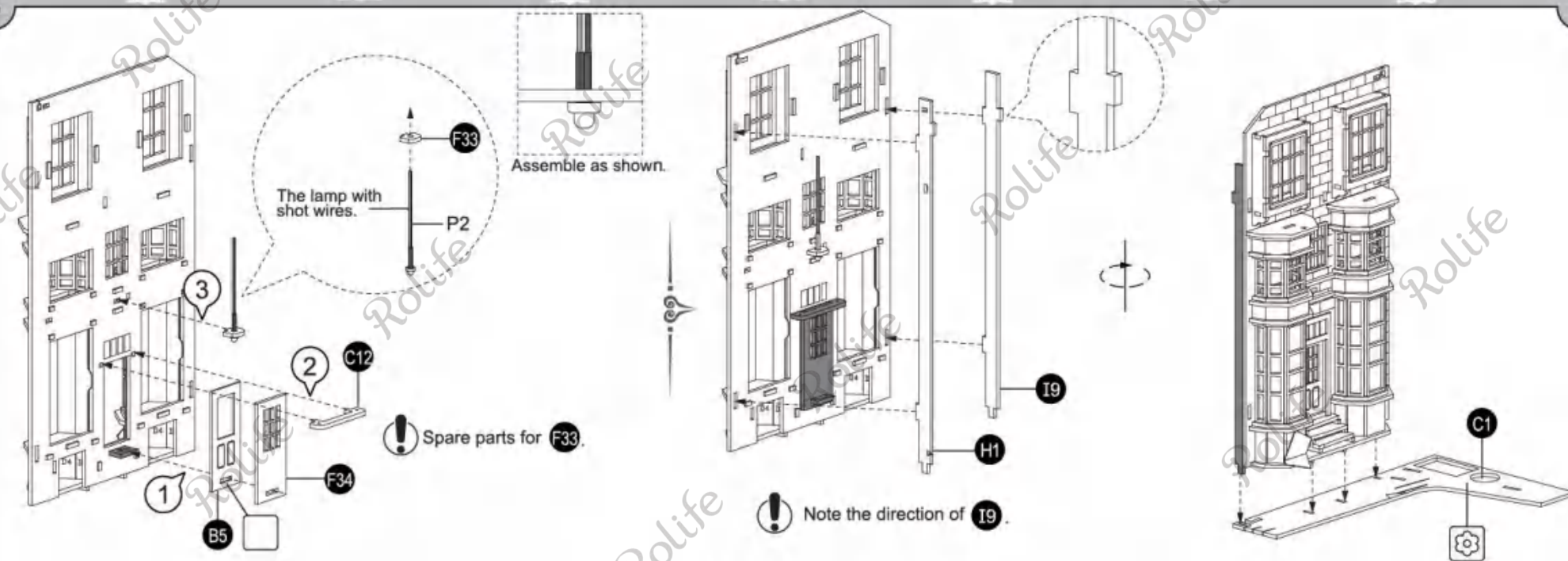
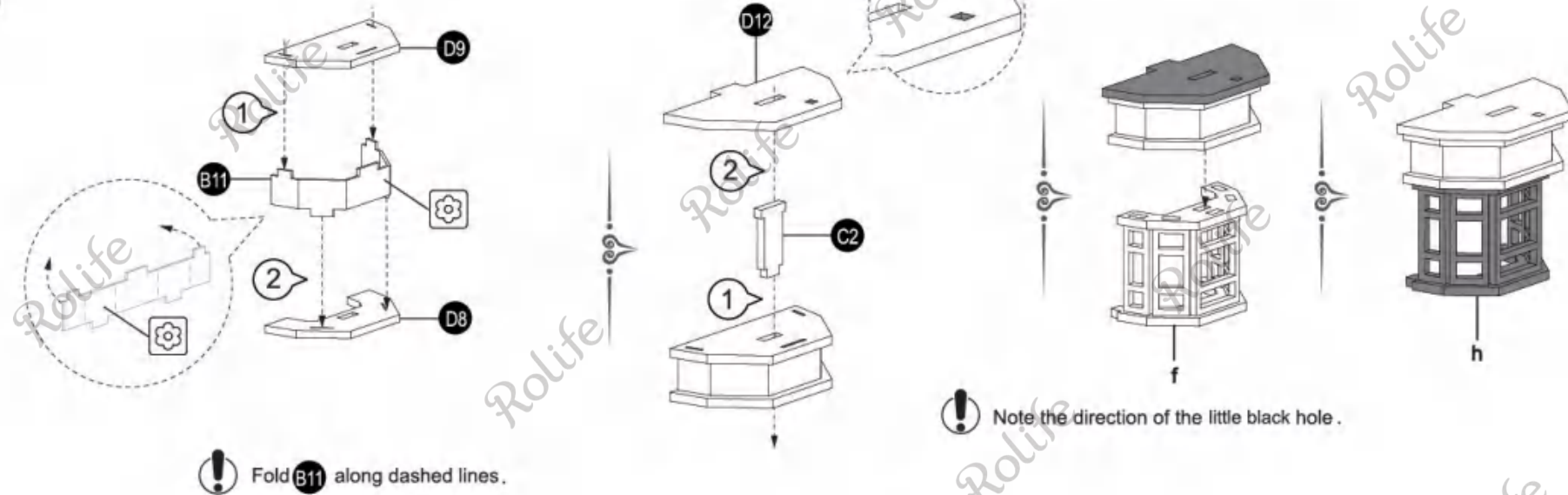
7



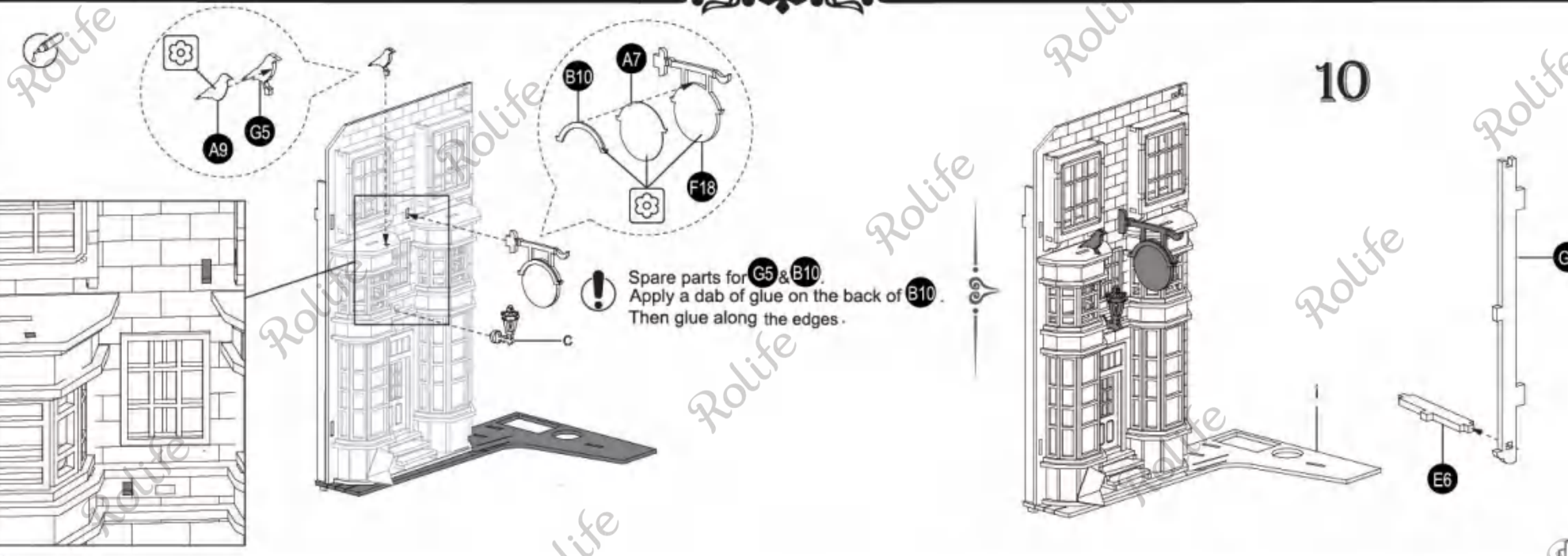
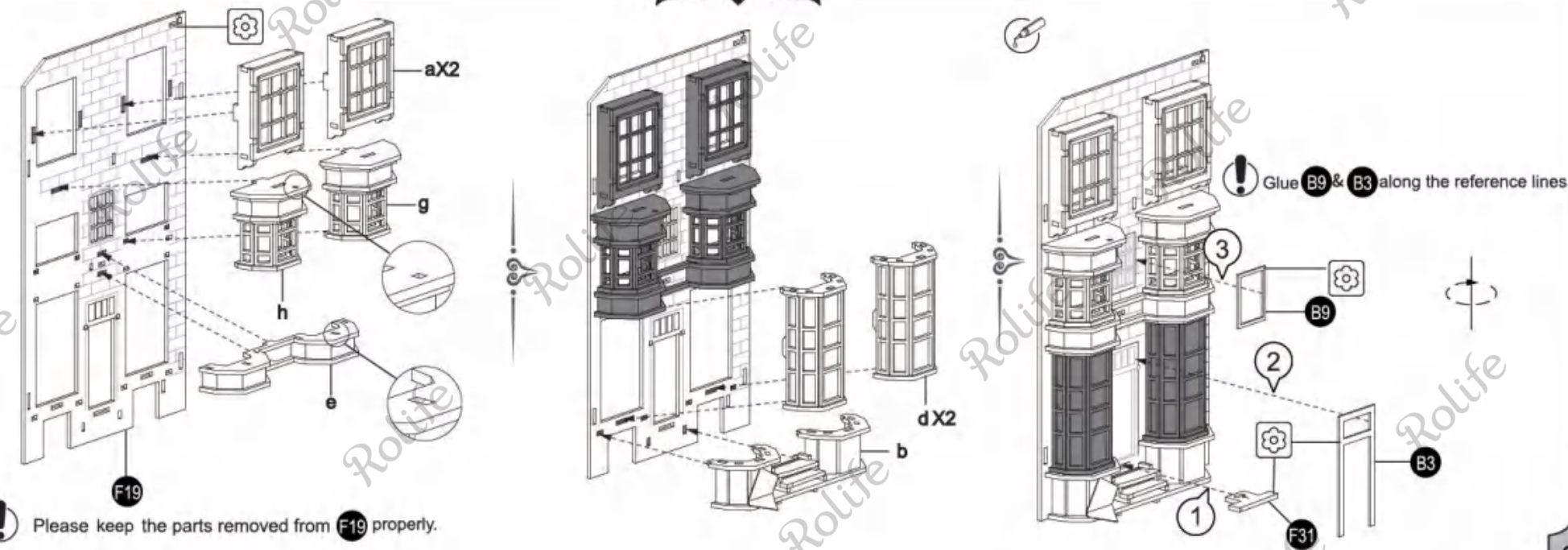
6



8



9

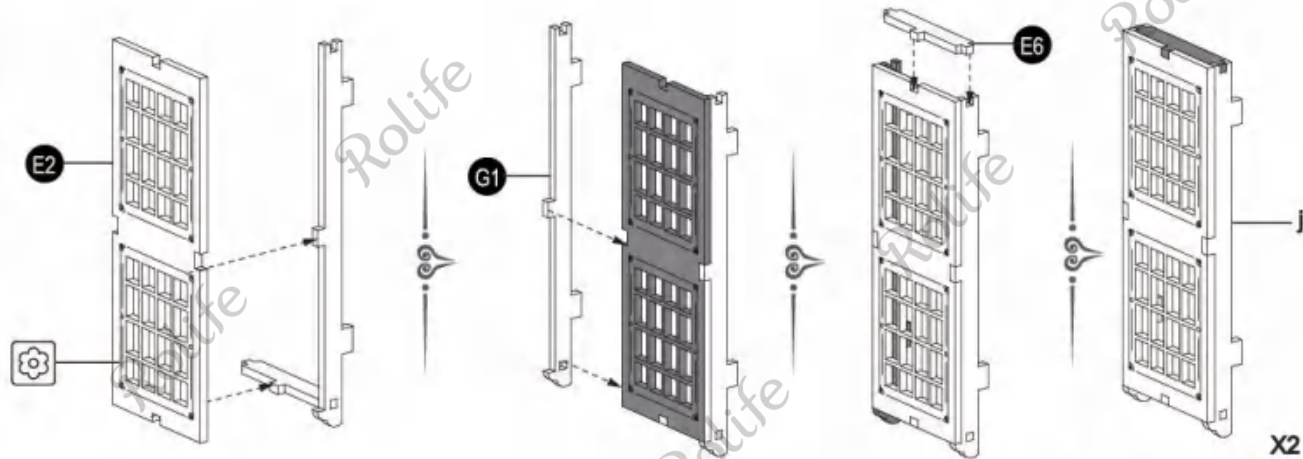


10

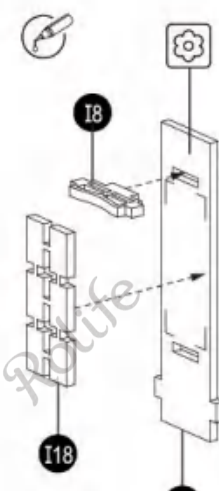
7

8





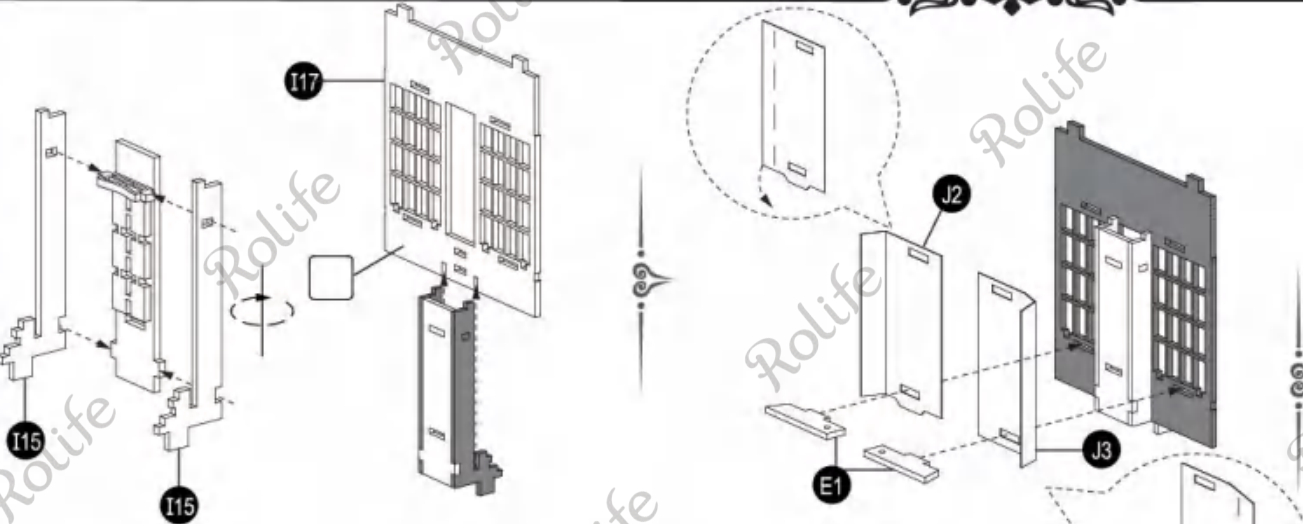
11



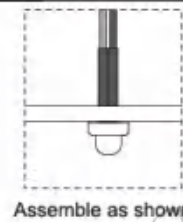
X2

Assemble 2 parts J.

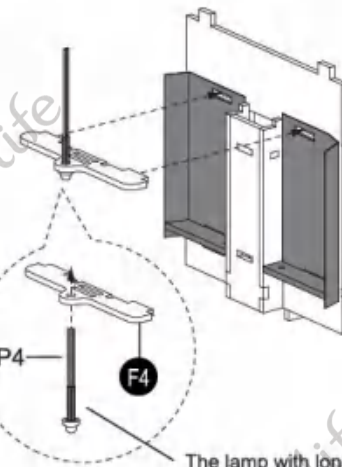
Apply a dab of glue on the back of I18. Glue along reference lines.



Remove the film before assembling J2 & J3. Clean the holes first. Then fold along dashed lines.

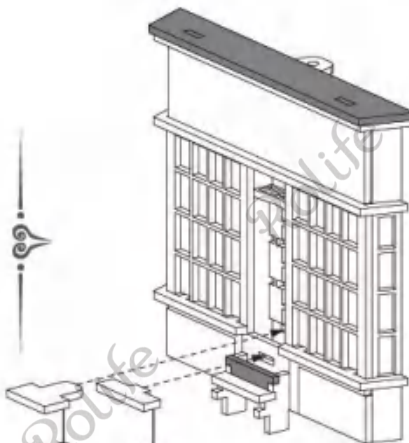
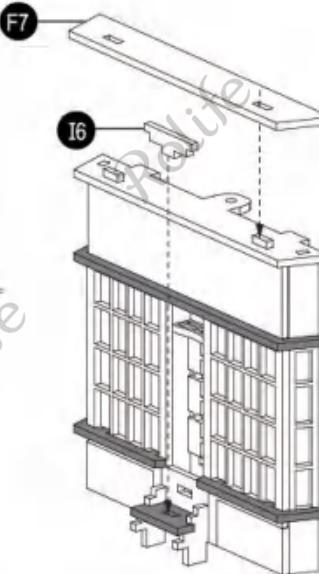
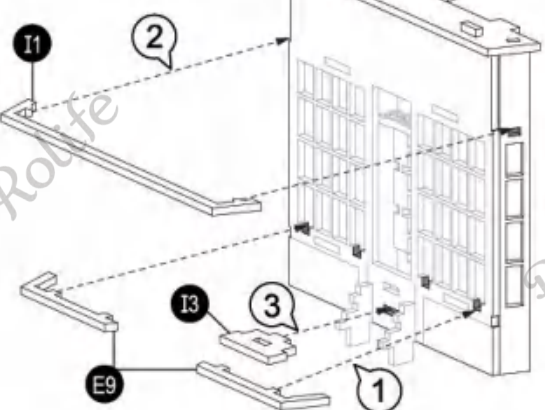
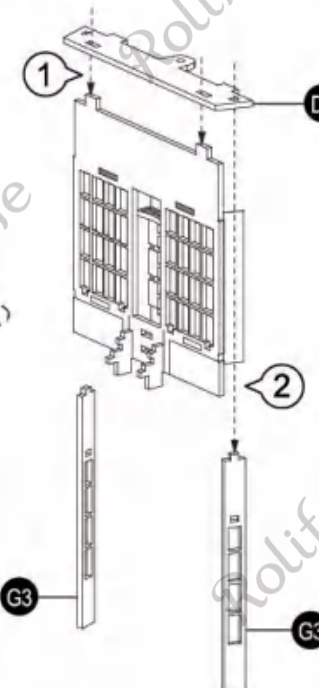


Assemble as shown.

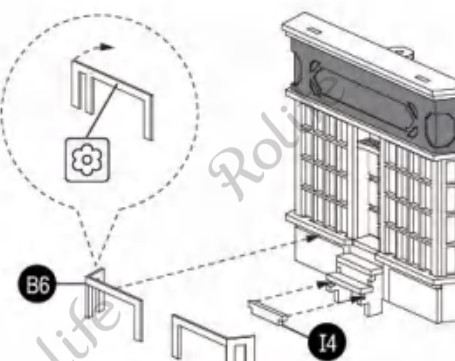
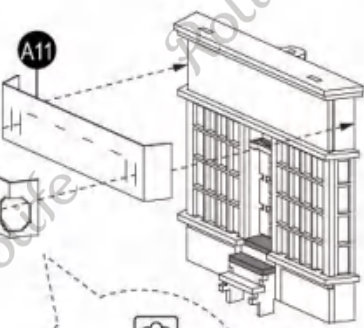


The lamp with long wire.

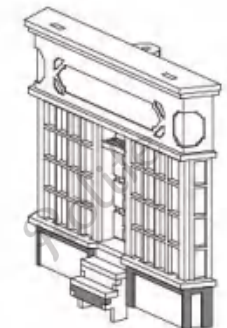
Assemble the light bead as shown.



Fold A11 & B4 along dashed lines. Apply some glue on the blank side of B4. Glue along reference lines.

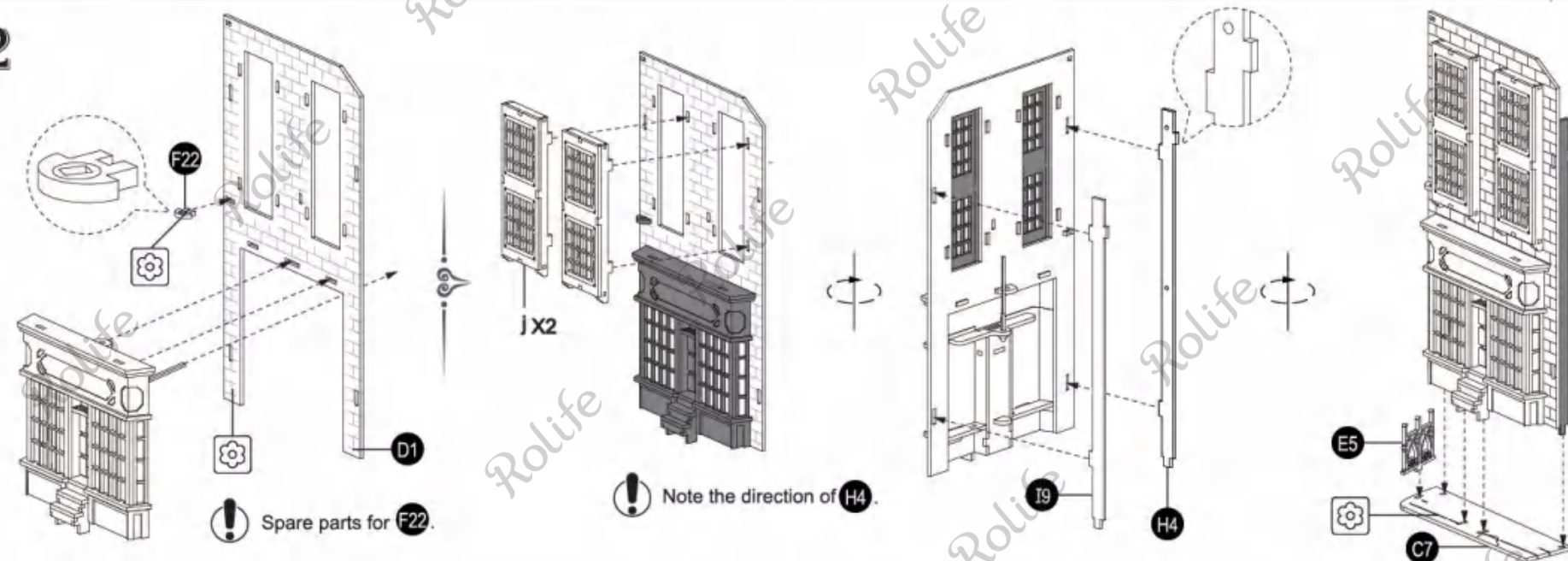


Fold B6 & B7 along dashed lines. Apply glue on the blank side of B6 & B7. Glue along reference lines.

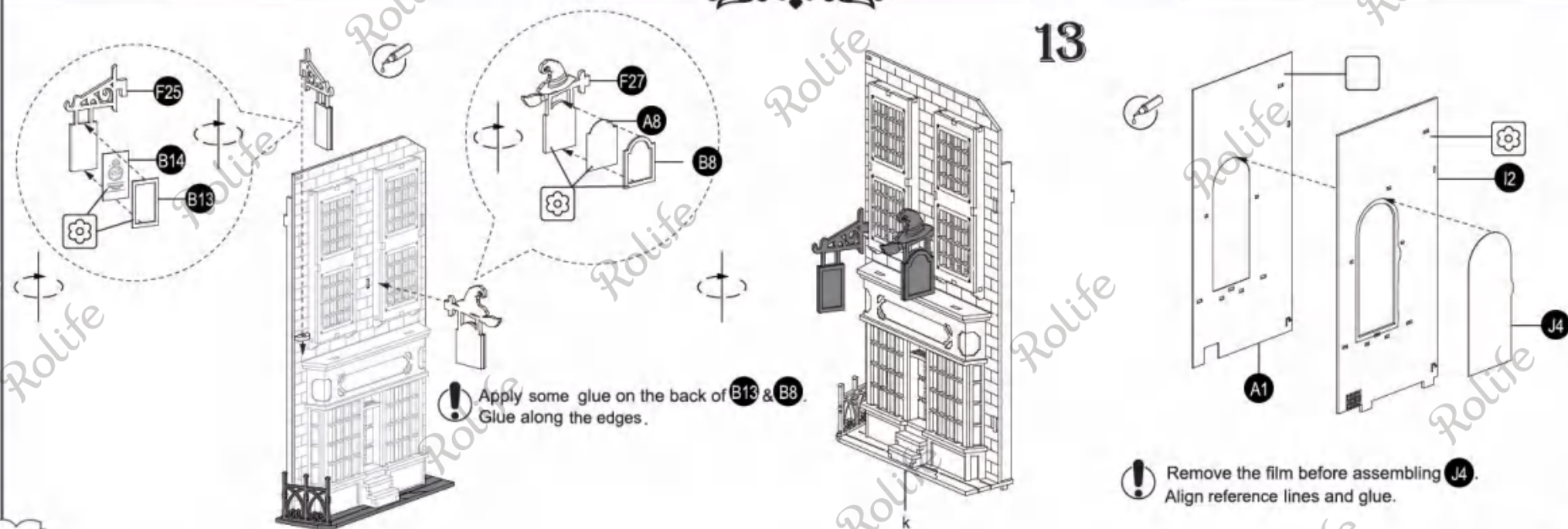




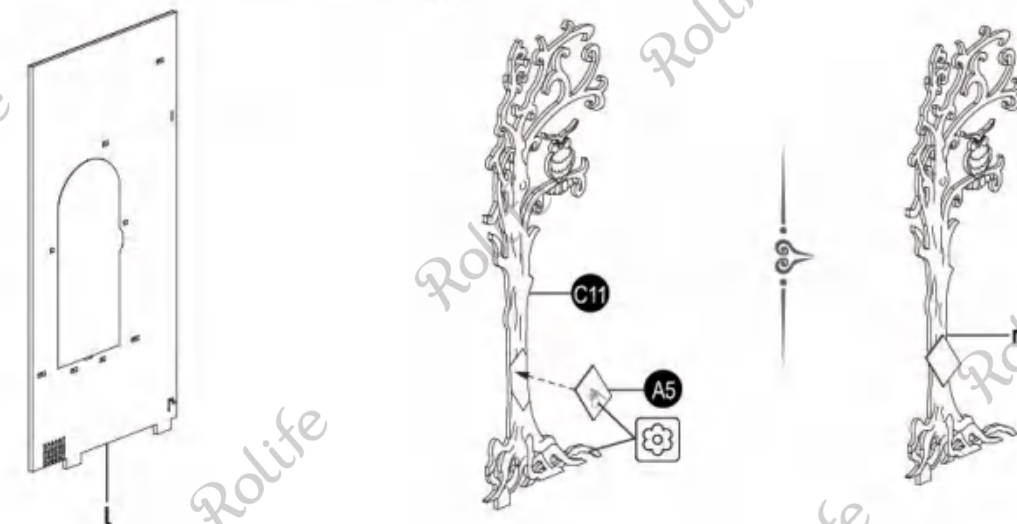
12



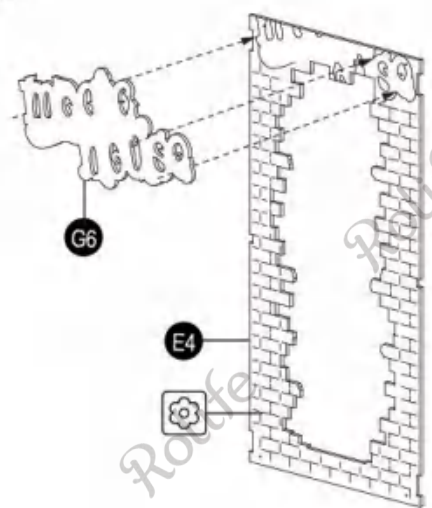
13



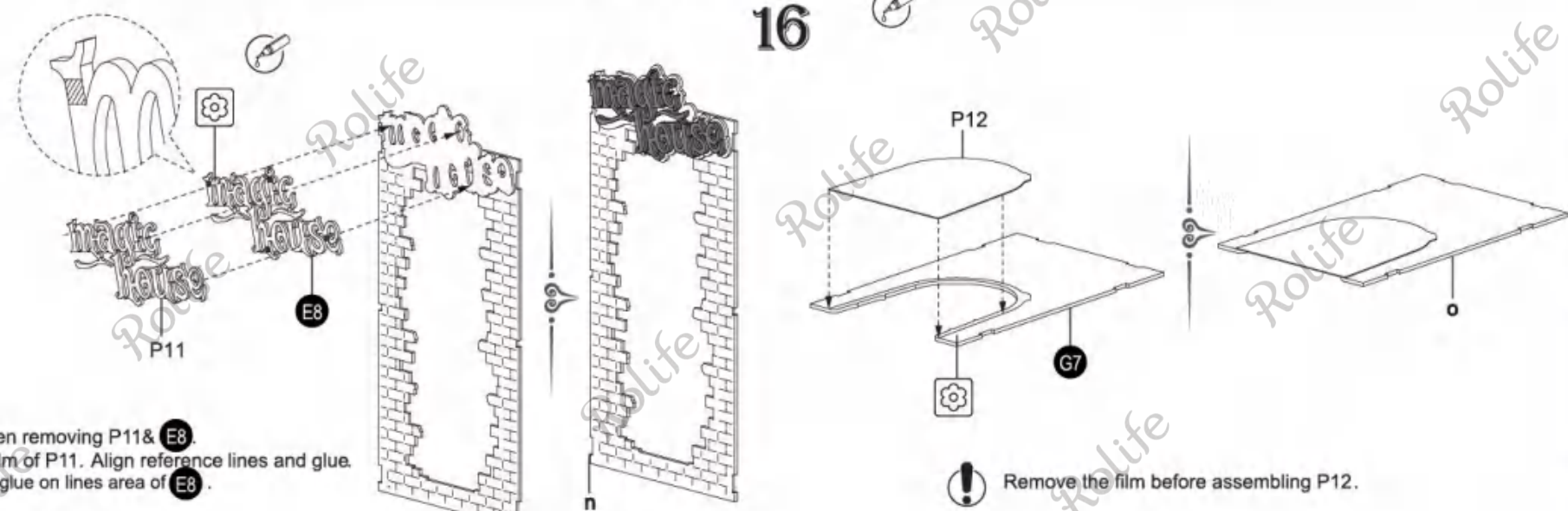
14



15

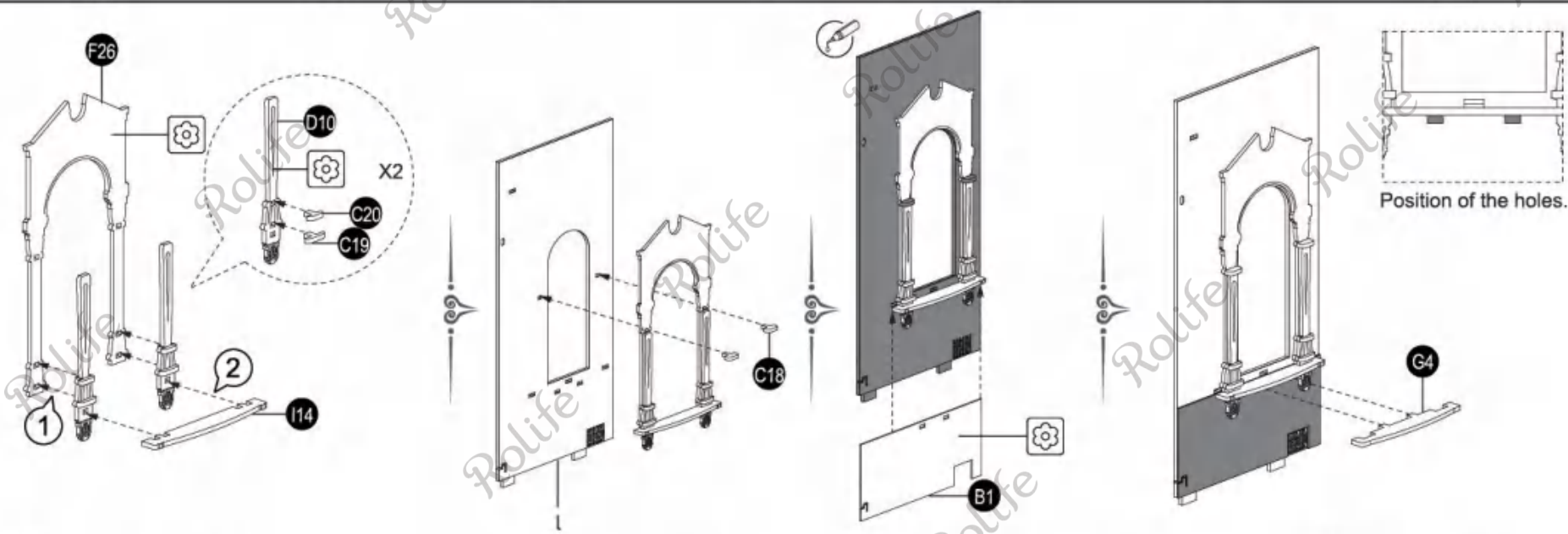


16





17



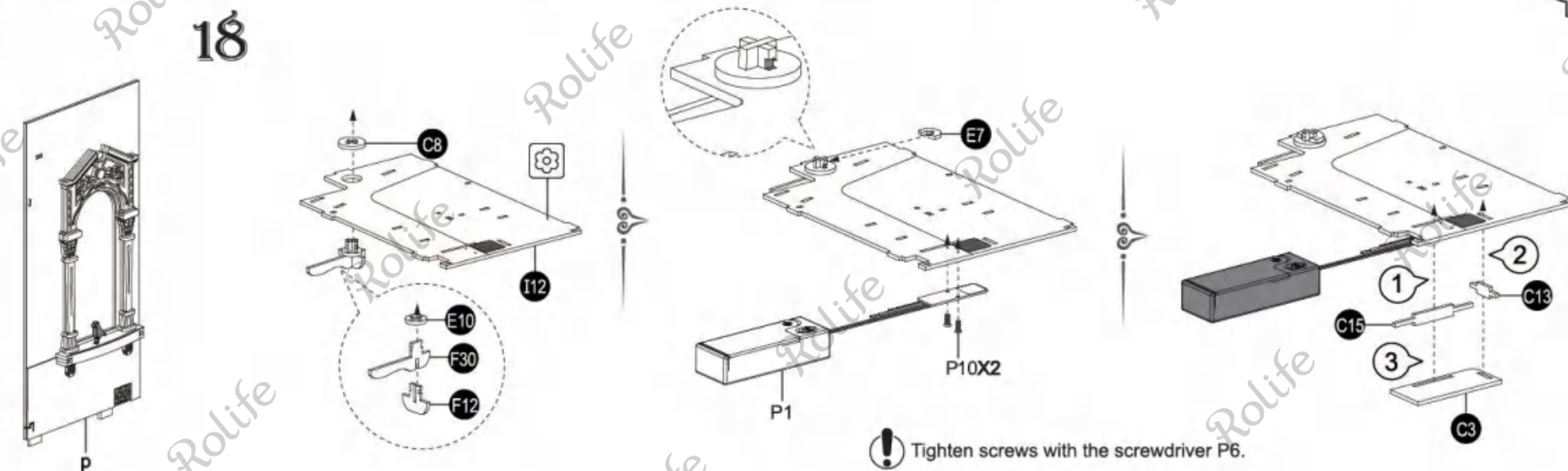
! Spare parts for C19 & C20.

! Spare parts for C18.

! Align the edges and glue.

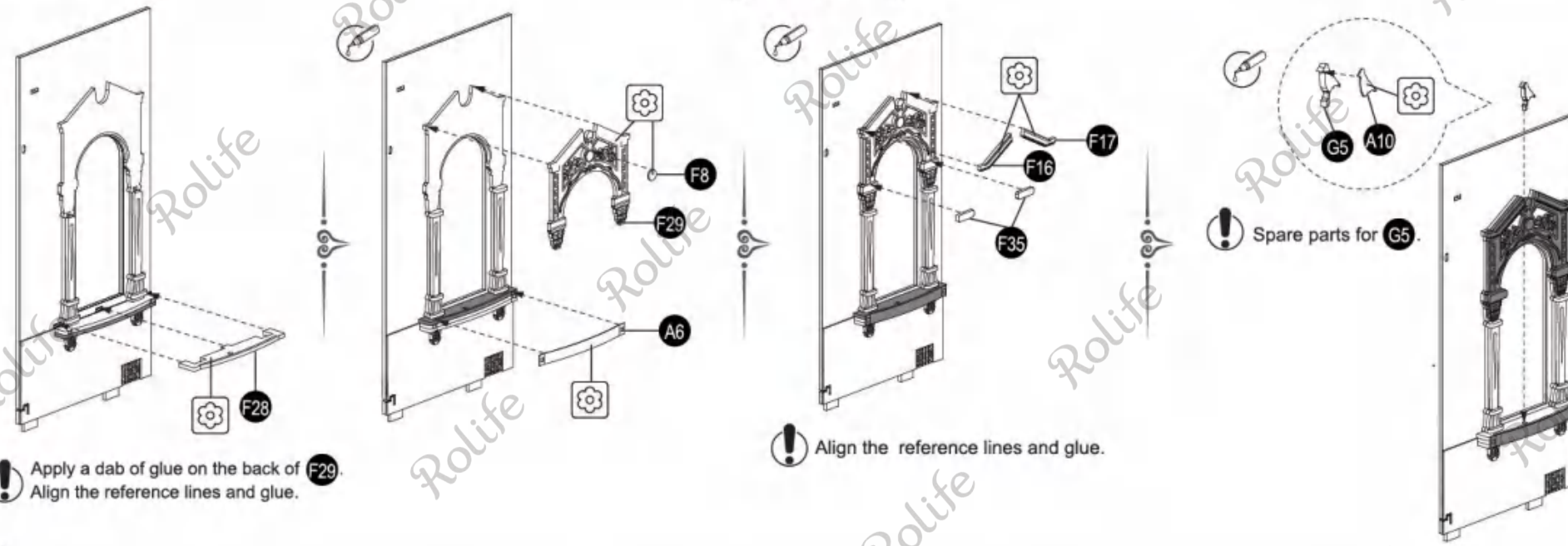
! Diagram for holes.

18



! Tighten screws with the screwdriver P6.

13

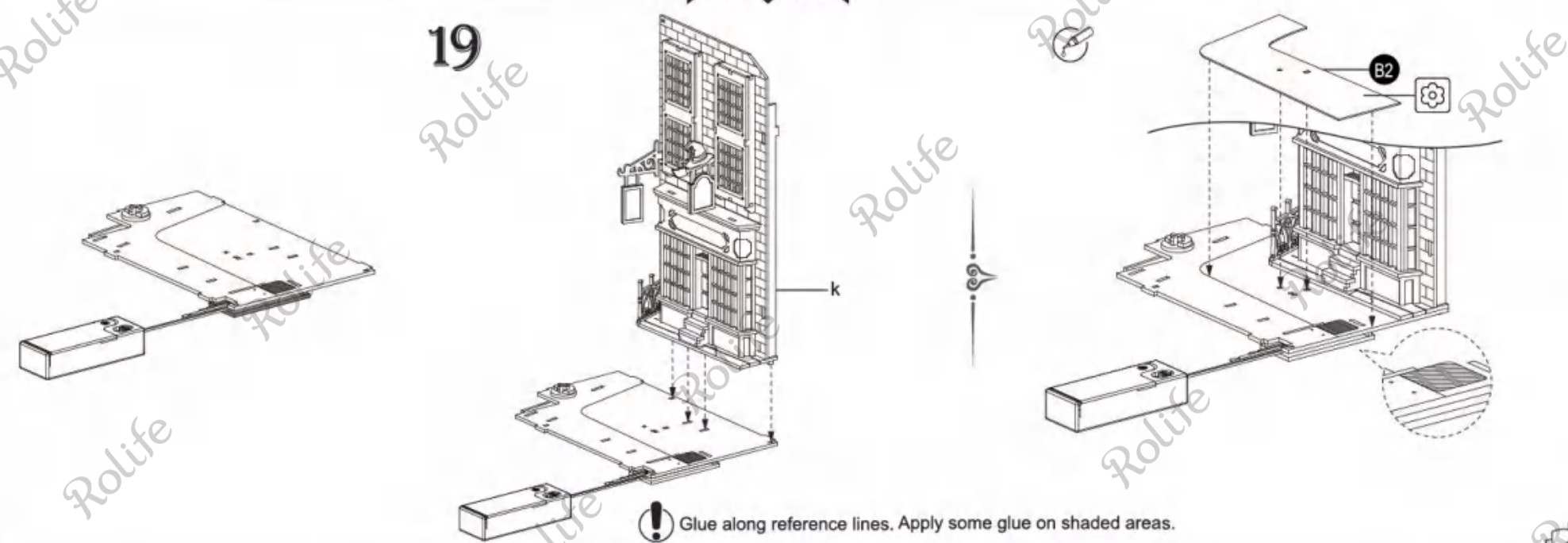


! Apply a dab of glue on the back of F29. Align the reference lines and glue.

! Align the reference lines and glue.

! Spare parts for G5.

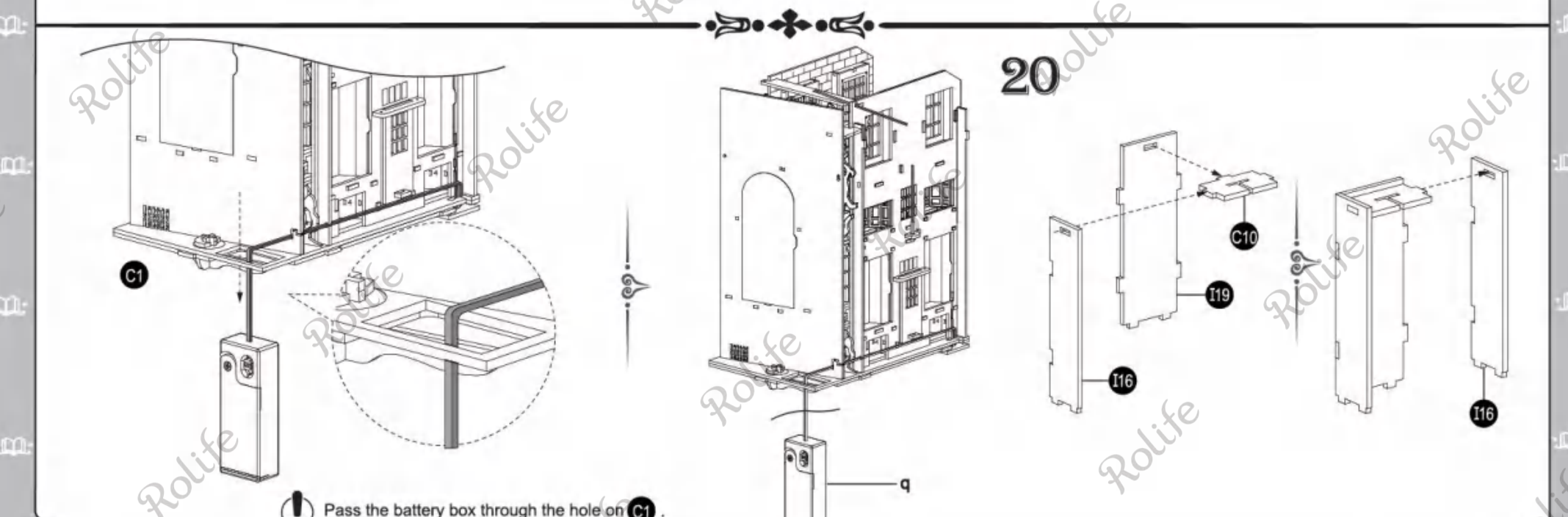
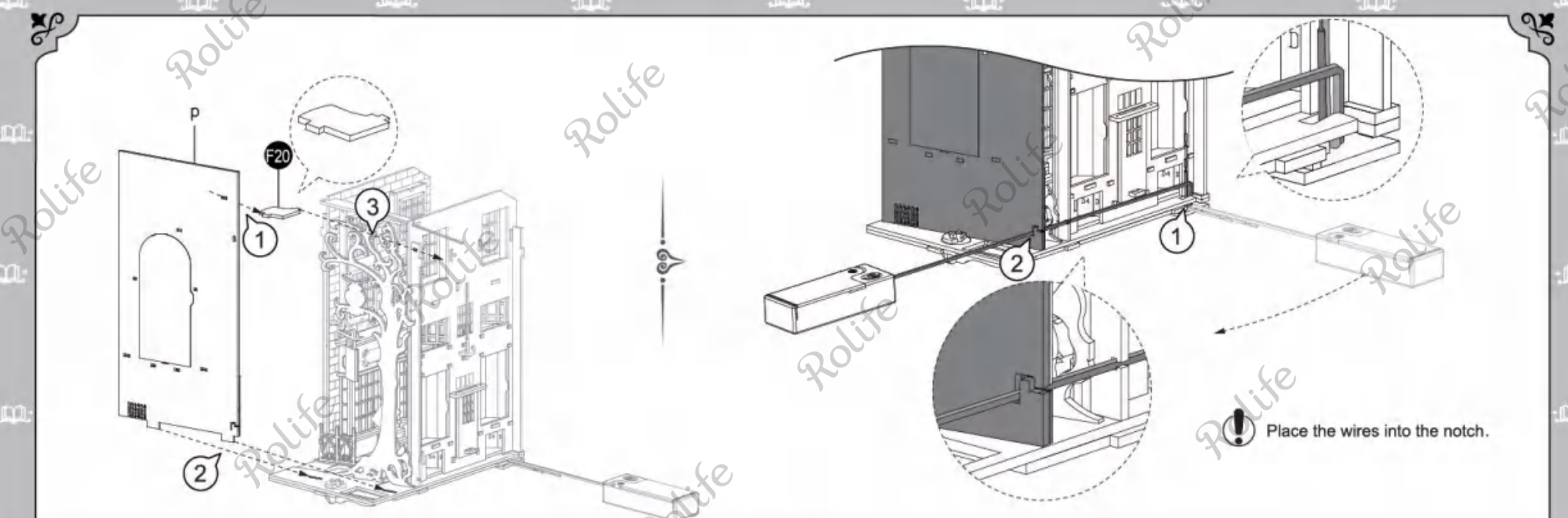
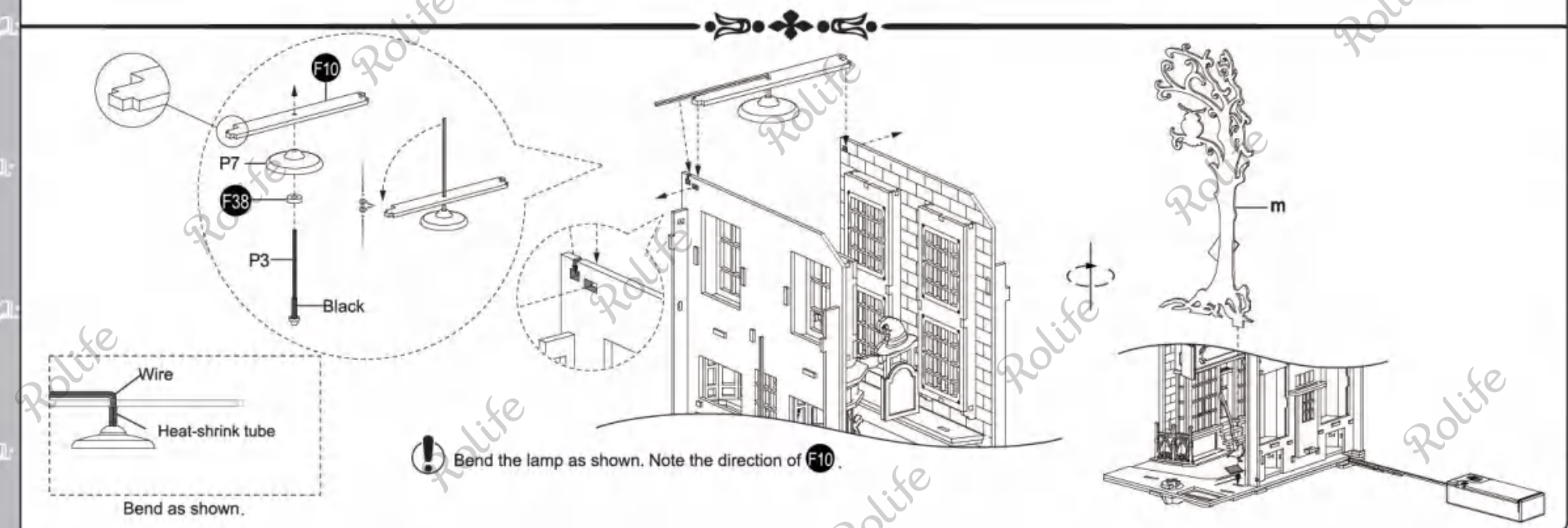
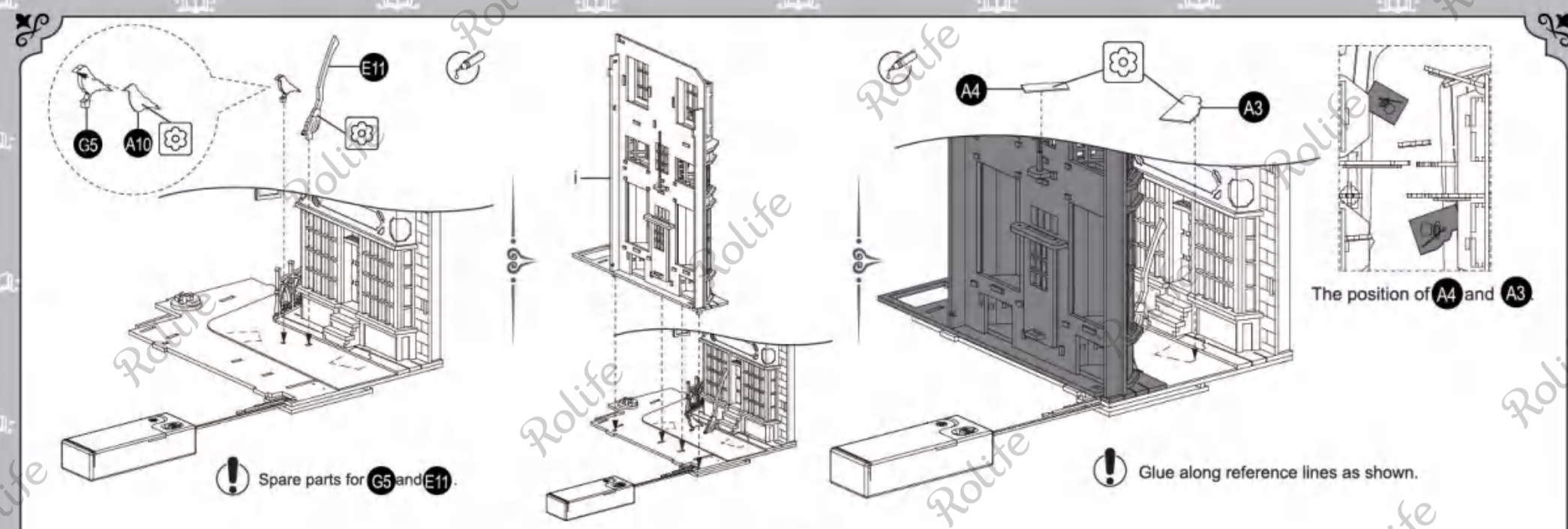
19



! Glue along reference lines. Apply some glue on shaded areas.

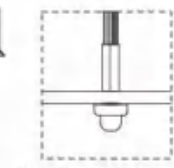
14



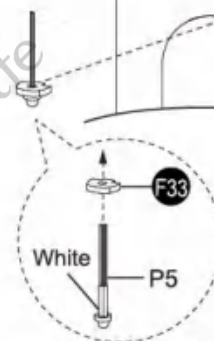




21



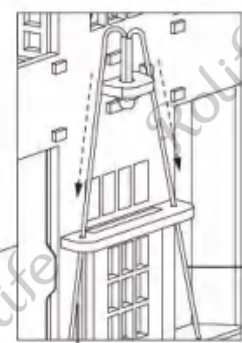
Assemble as shown.



! F33 has spare parts. Assemble the light as shown.

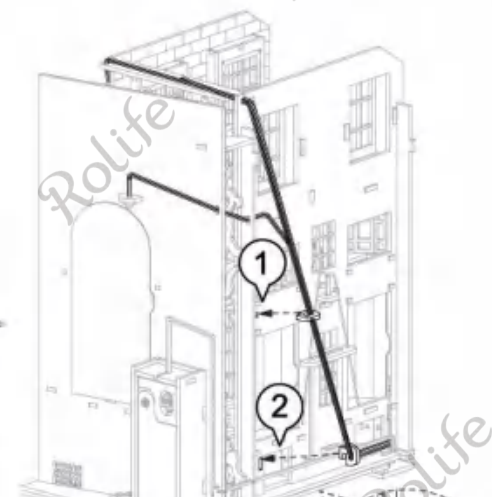
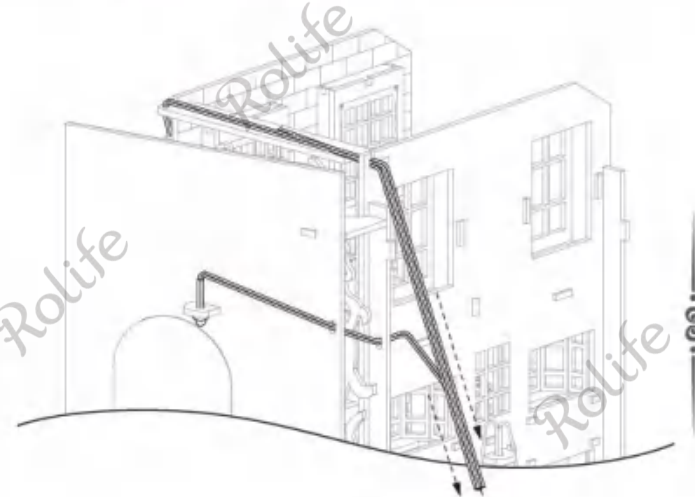


! Pass the wires through the holes by steps. Note the difference of their colors.



Red

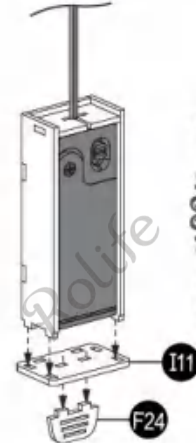
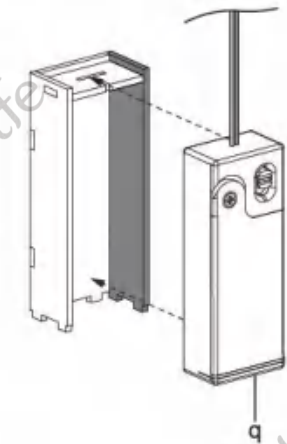
Black



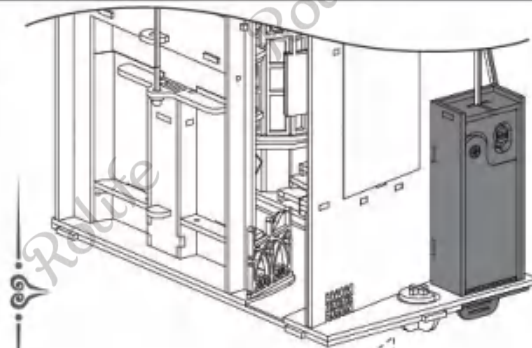
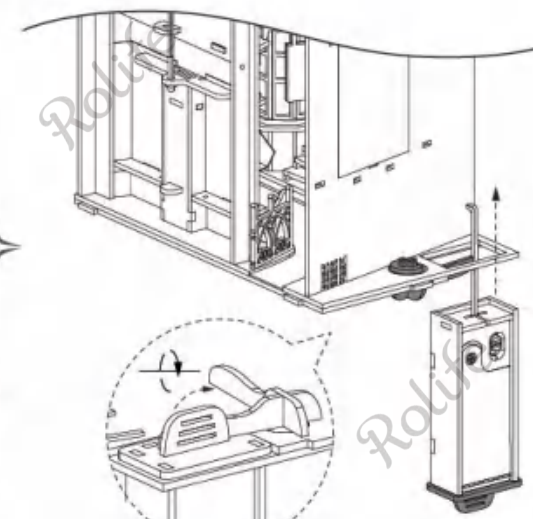
! Pass the three stranded wires through F37 & F36. F36 has spare parts.



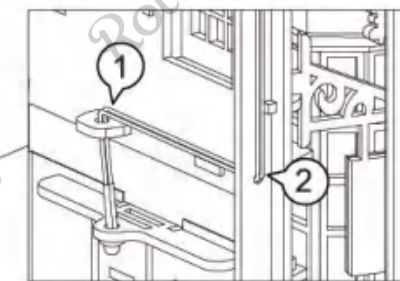
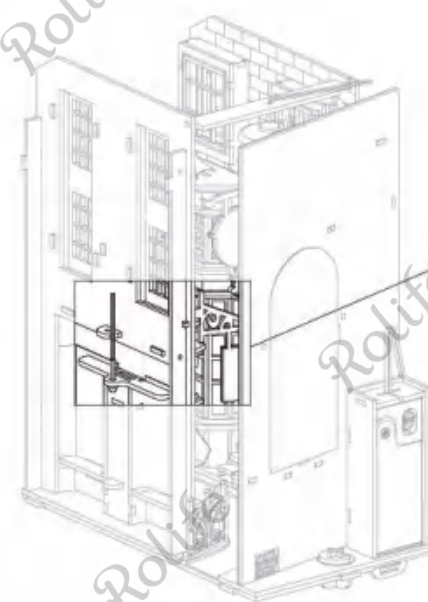
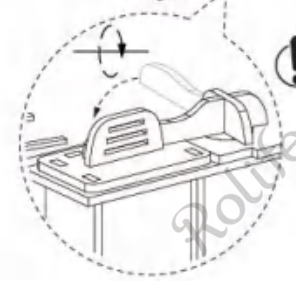
18



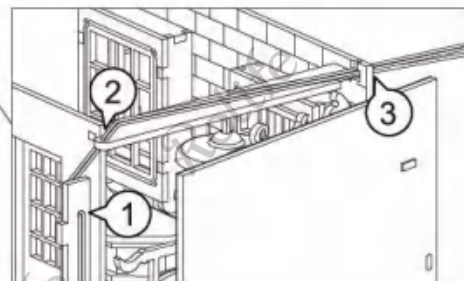
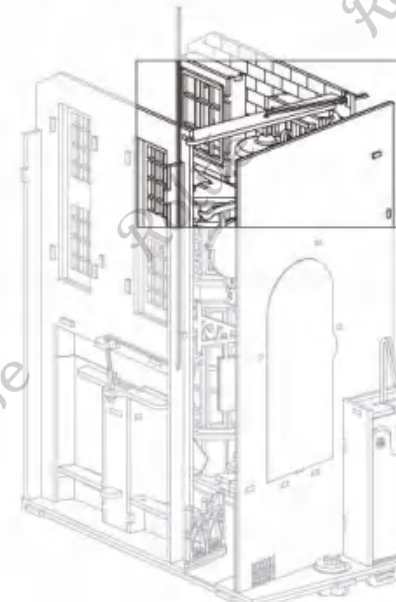
! Rotate the switch as shown. Push the battery box up.



! Rotate the switch as shown to fix the battery box.

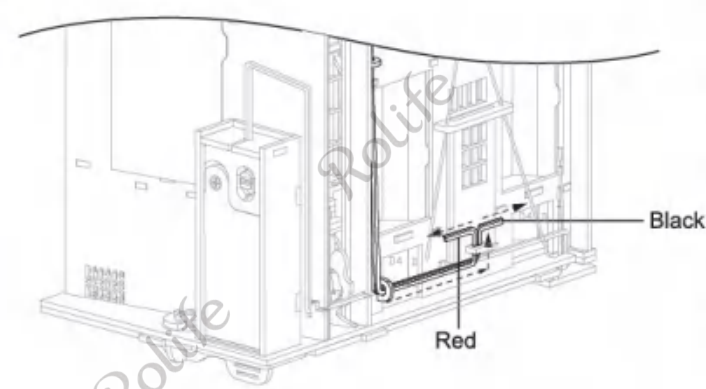


! Pass the wires through holes by steps.

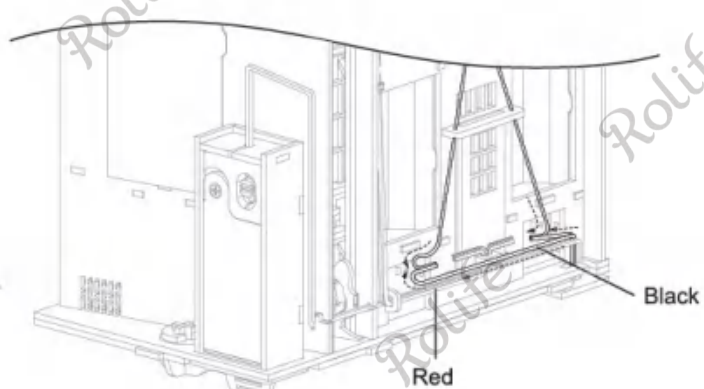
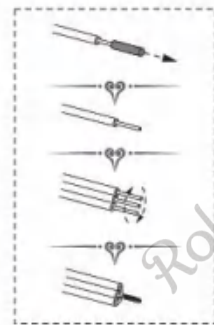


17

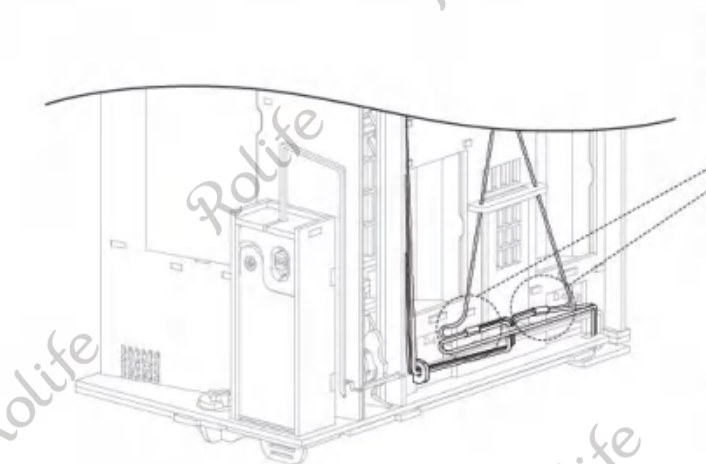
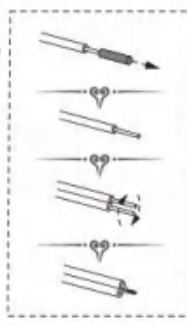




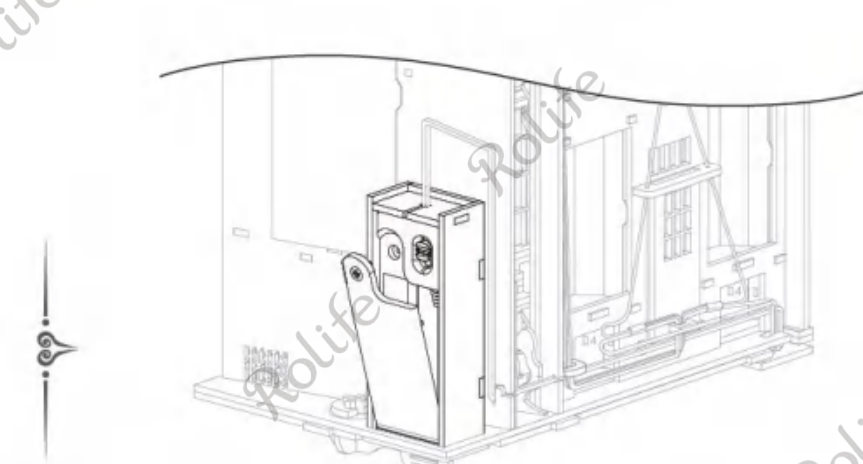
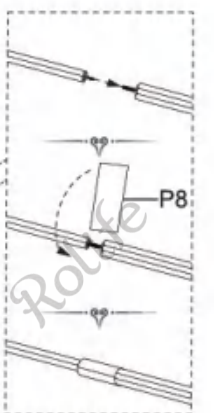
! Sort same color wires together after passing through the hole.  
Twist the copper wires of the same color.



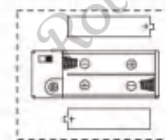
! Twist the copper wires of the same color.



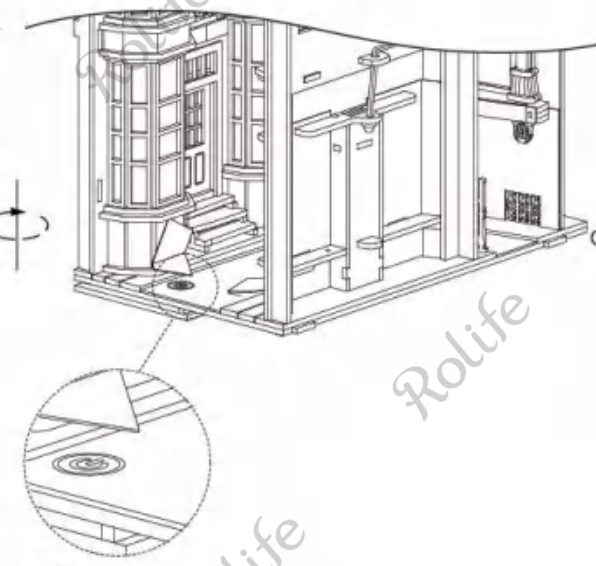
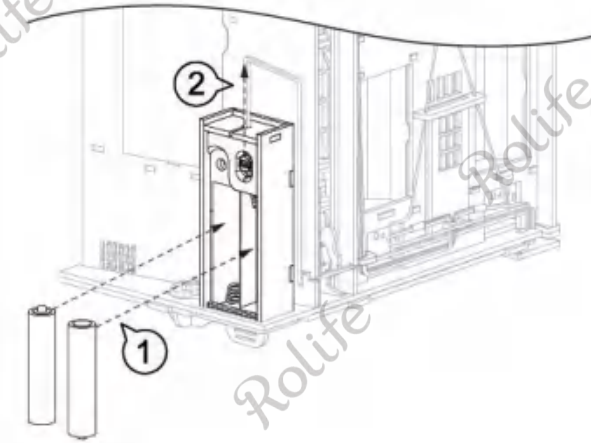
! Wrap all copper wires with the insulation tape P8.



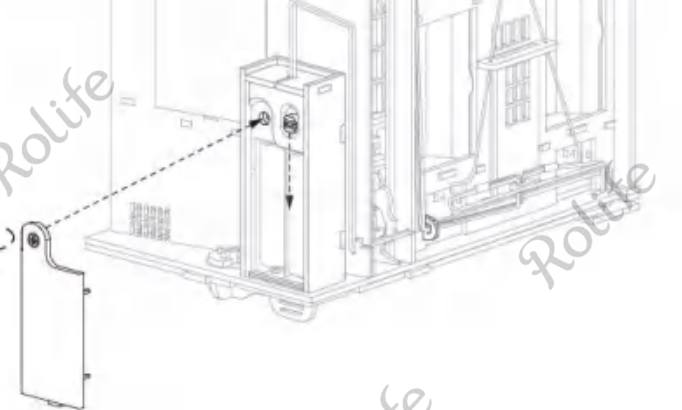
! Unscrew the battery box with the screwdriver P6.



Positive and negative electrodes.

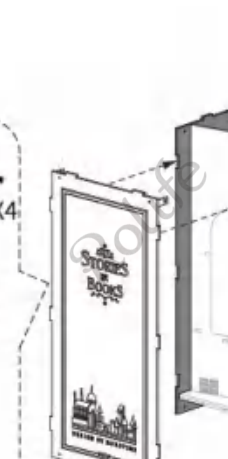
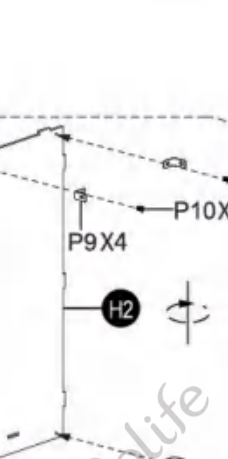
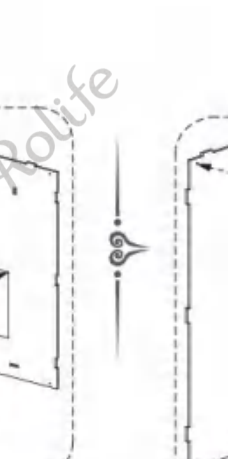
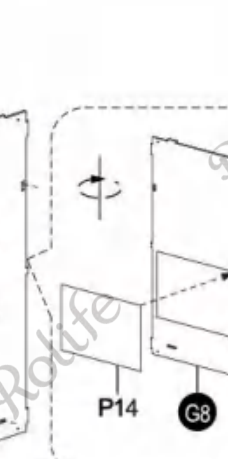
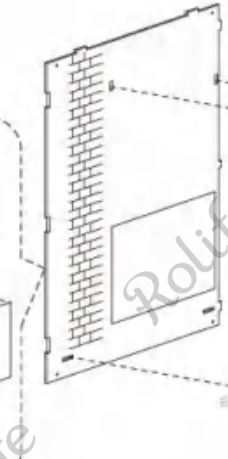
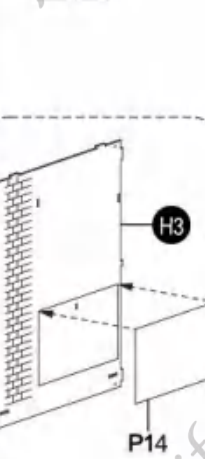


! Touch it to test if the light works properly.



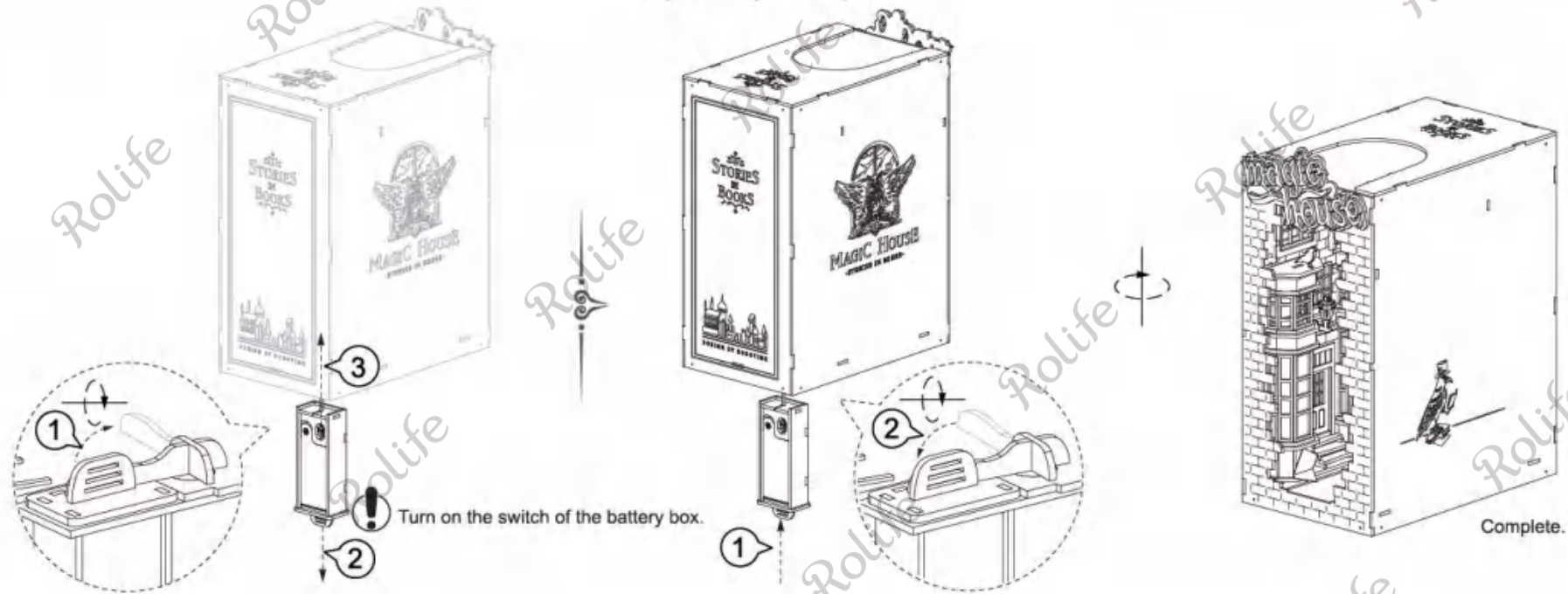
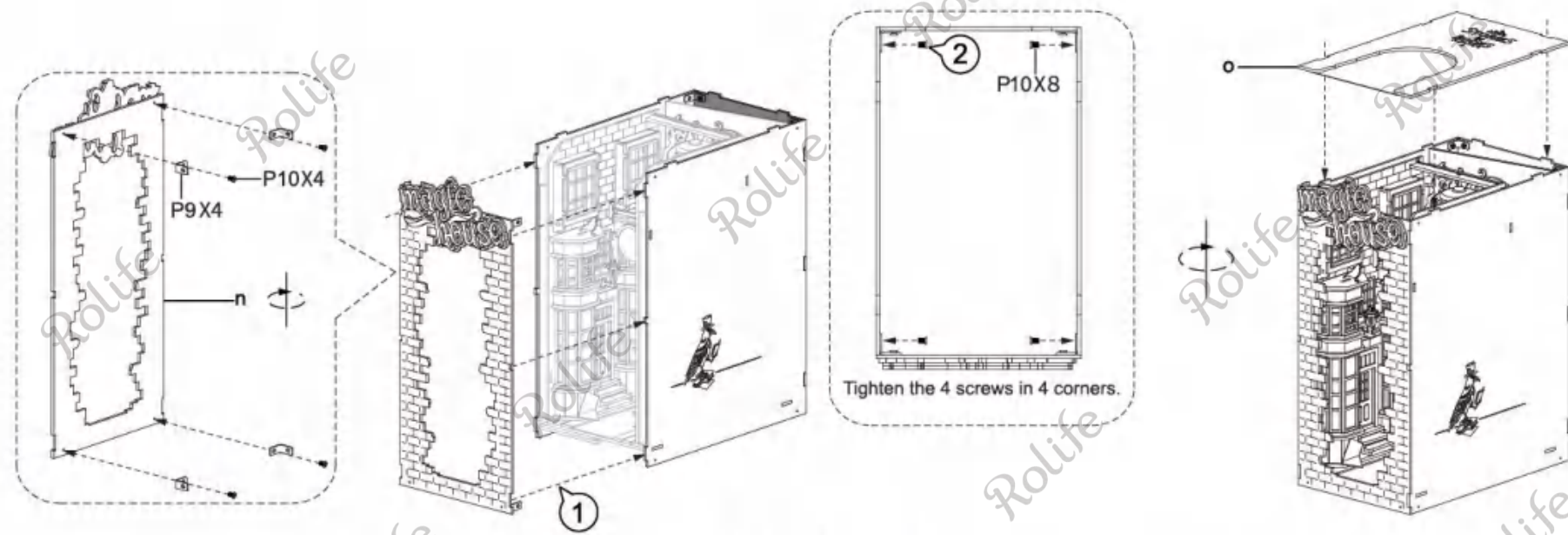
! Tighten back cover of the battery box if the light works properly.  
Then turn off the battery box switch and continue assembling.

22



! Spare parts for P14.





# **BOOK NOOK & WONDERLAND** | **MAGIC HOUSE** **TGB03**



**TGB01**  
Sakura Densya



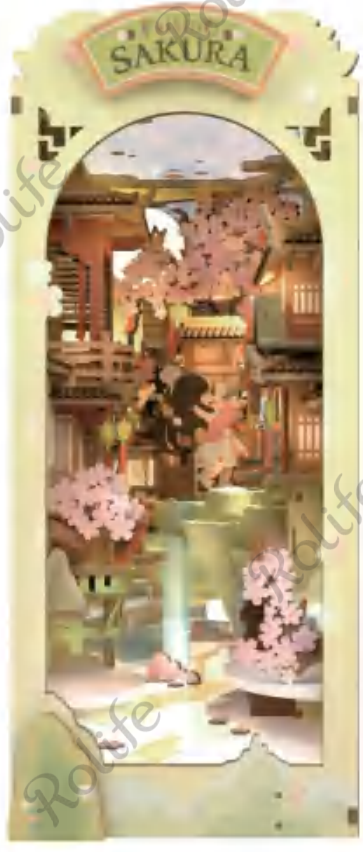
**TGB02**  
Sunshine Town



**TGB03**  
Magic House



**TGB04**  
Time Travel



**TGB05**  
Falling Sakura