

Rolife

BOOK NOOK & WONDERLAND

• TGB08 ROMANTIC VENICE

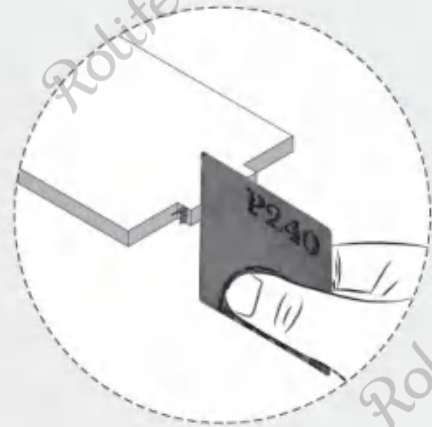
Designed by **ROBOTIME**
www.robotime.com
MADE IN CHINA

49.1TGB08.100

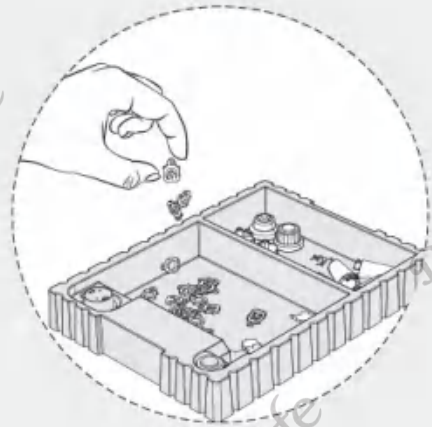
Pictures for reference only. Please subject to our existing products.



Assembly Tips



Polish the edges with sandpaper if there are burrs on pieces or it's hard to insert.



Put small parts into the box to prevent loss.



Remove the part by pressing its back to reduce burrs.



WARNING

- The product requires 2 "AAA/LR03/AM4 1.5V" batteries (batteries for self-preparation).
- Before loading or removing batteries, please loosen screws on the cover of the battery box with the screwdriver first.
- Non-rechargeable batteries are not to be recharged.
- Rechargeable batteries are only to be charged under adult supervision.
- Rechargeable batteries are to be removed from the toy before being charged.
- Different types of batteries or new and used batteries are not to be mixed.
- Batteries are to be inserted with the correct polarity (+ and -).
- Remove the exhausted battery in time.
- The power supply terminal cannot be short circuited.
- Do not connect the wire to a mains outlet.
- The product is not to be connected to more than the recommended number of power supplies.
- Check each part before assembly. If the part is damaged, fix it well before assembly.
- Please keep the product away from substances flammable and humid environments to prevent damage.
- The instruction must be retained since it contains important information.



ATTENTION

- This product is suitable for people over 14 years old. Children should be guided by adults.
- Some small parts and electronic components are included. Children must assemble under the guidance and supervision of adults in case of swallowing by mistake or choking.
- Some auxiliary tools are required to assemble our products. Please choose reasonably to avoid injury.
- Please read the instructions carefully before assembly to confirm that the parts are not damaged or missing.
- Please carefully cut the parts and make sure they are firmly pasted when using glue or tape.
- Please install the electronic components correctly and test whether the circuit is normal after completion.
- Please don't clean this product with chemical cleaners: alcohol, ammonia water, glass cleaner, etc.
- Please clean the product with clean soft cloth, and sand the board burr lightly with sandpaper.

Icon Illustration

1

Step 1



Printed side

2

Step 2



Blank side



Perspective changed



Flip to assemble



Use double-sided tape



Remove protective film



Assembly tips

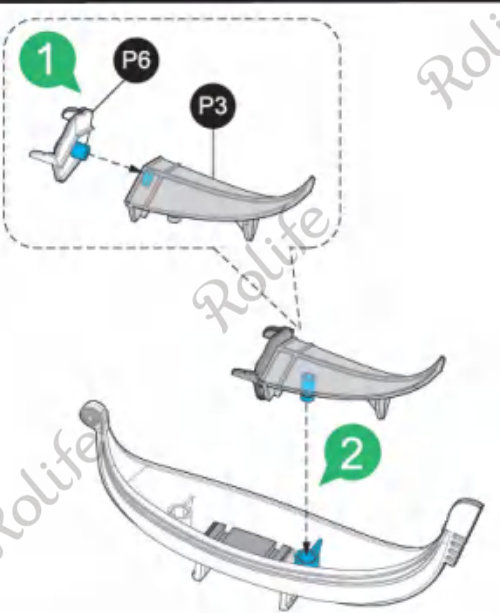
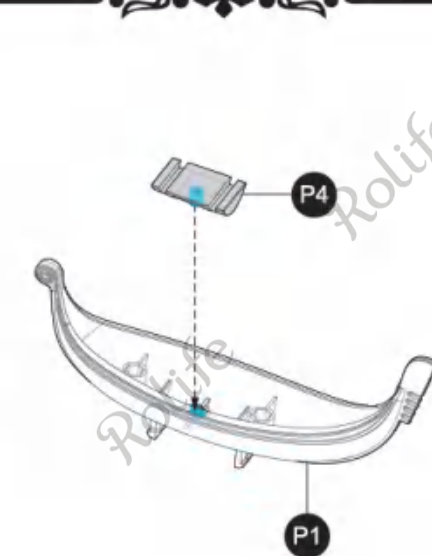
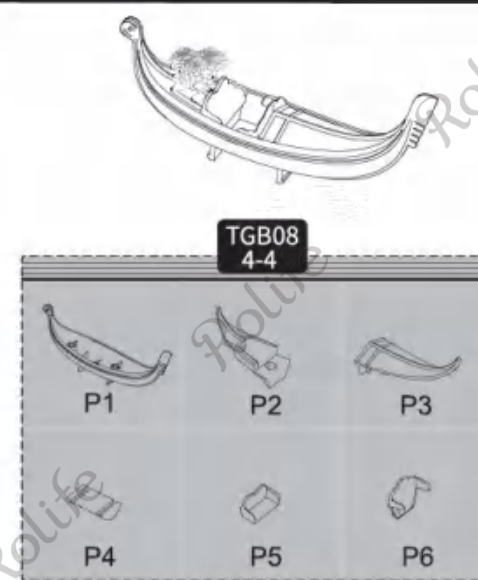


Complete 2 same parts

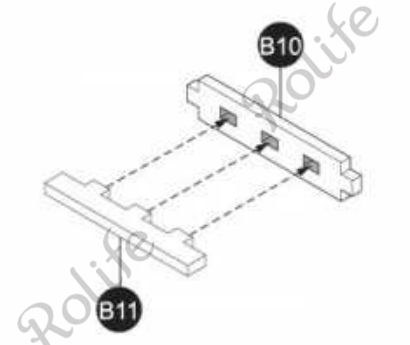
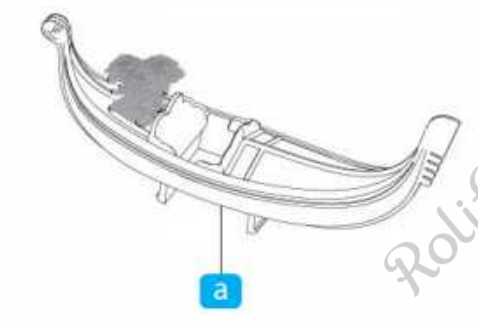
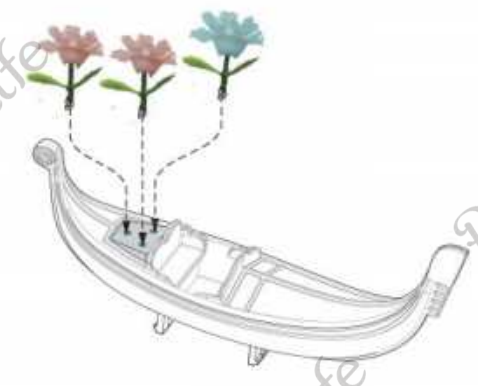
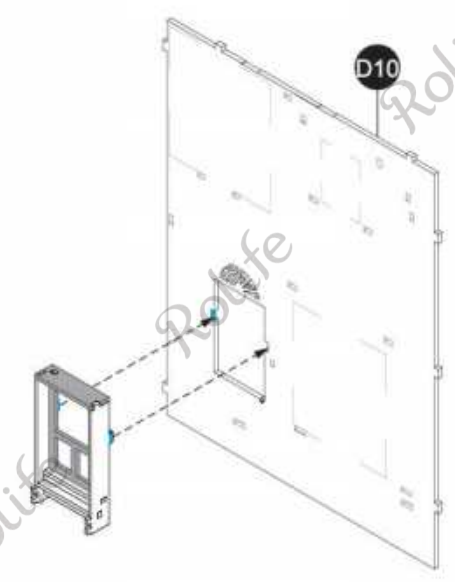
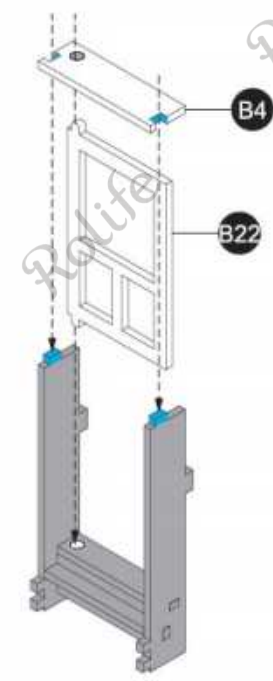
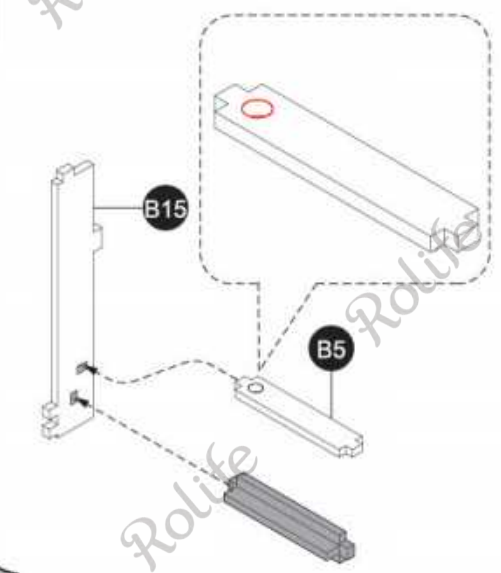
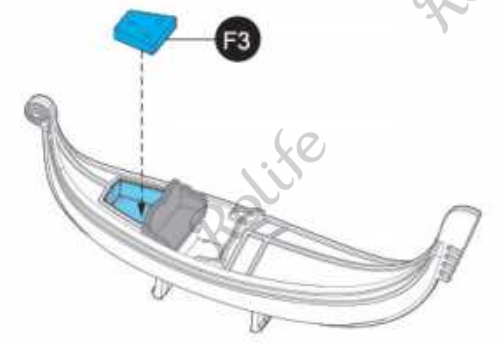
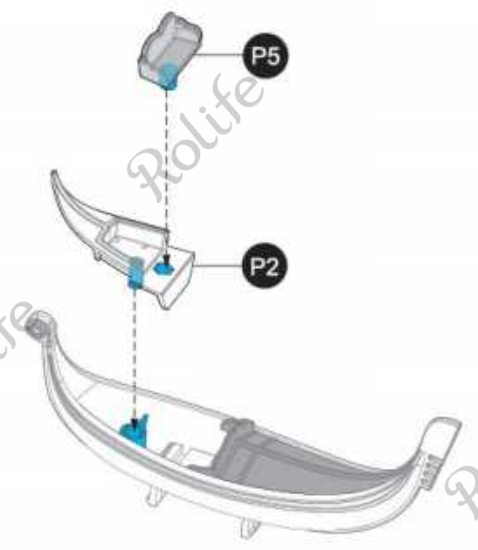
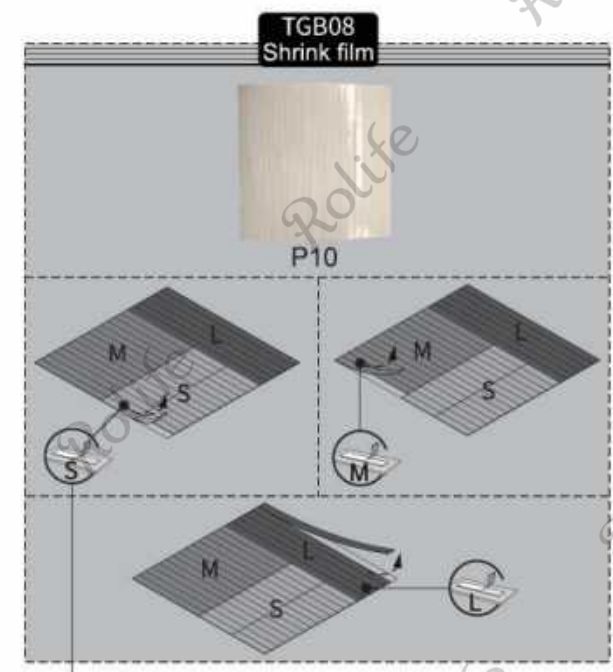
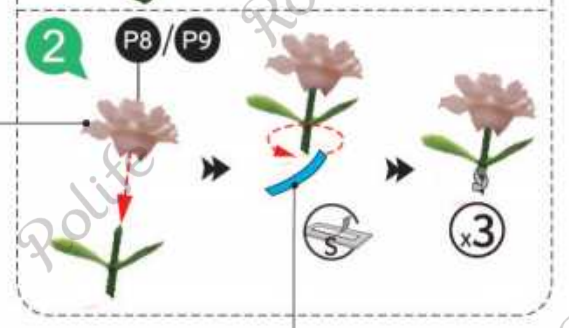
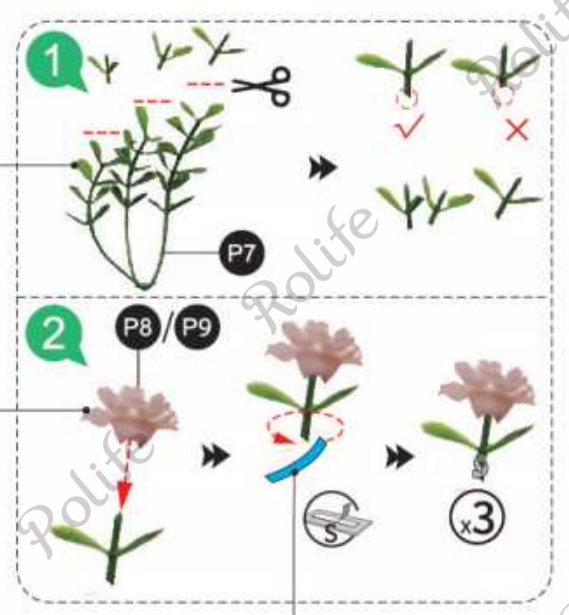
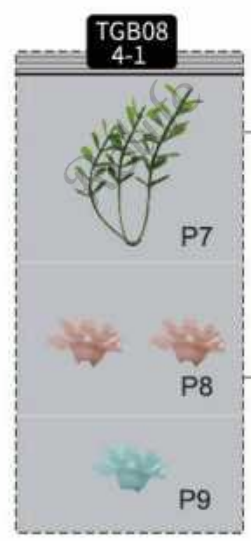


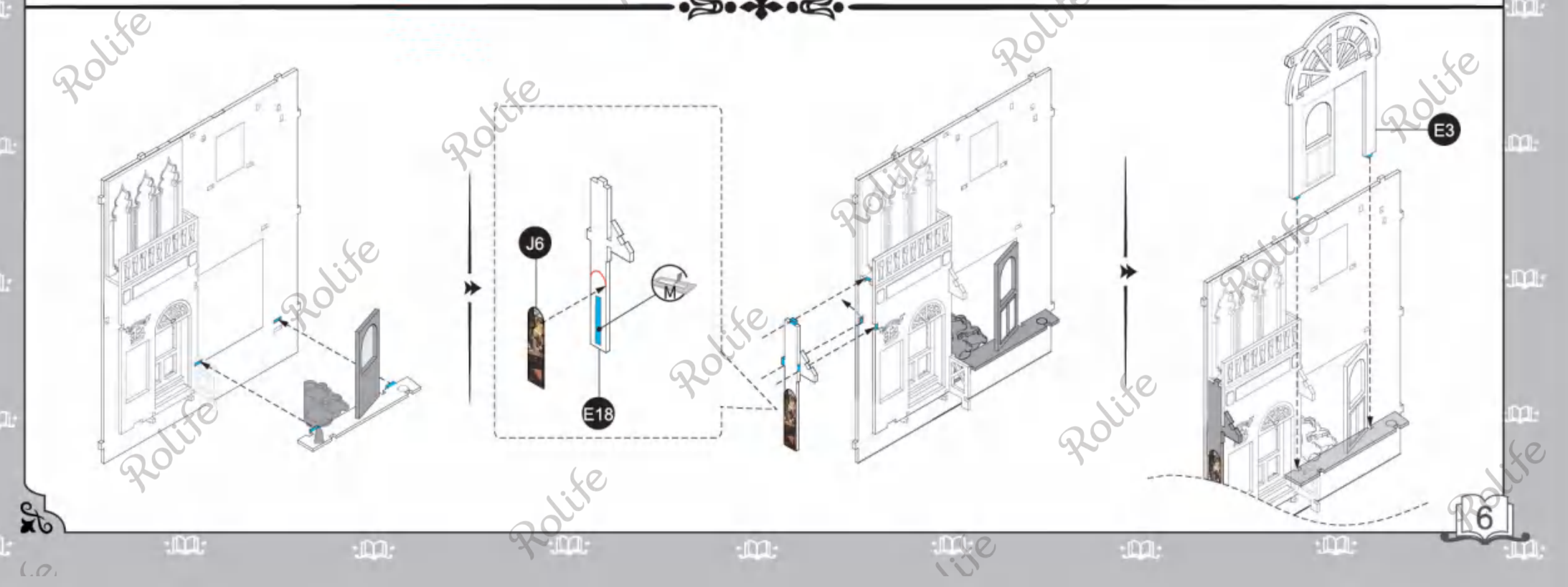
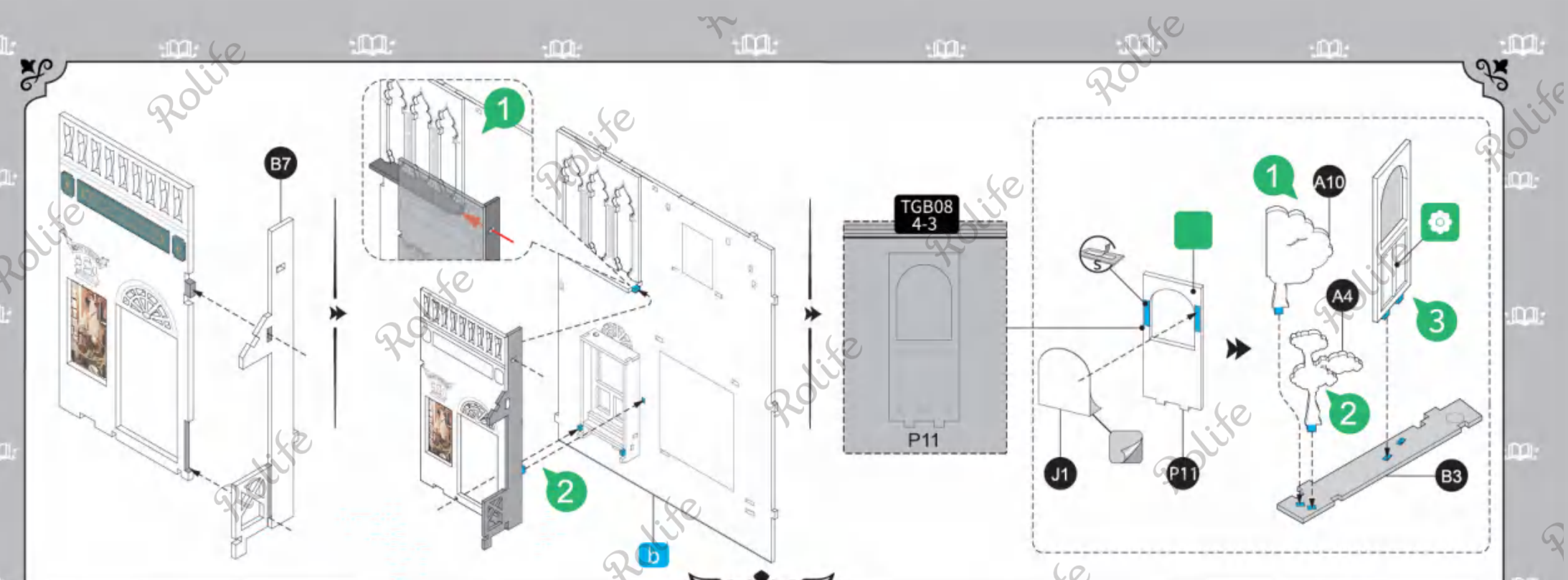
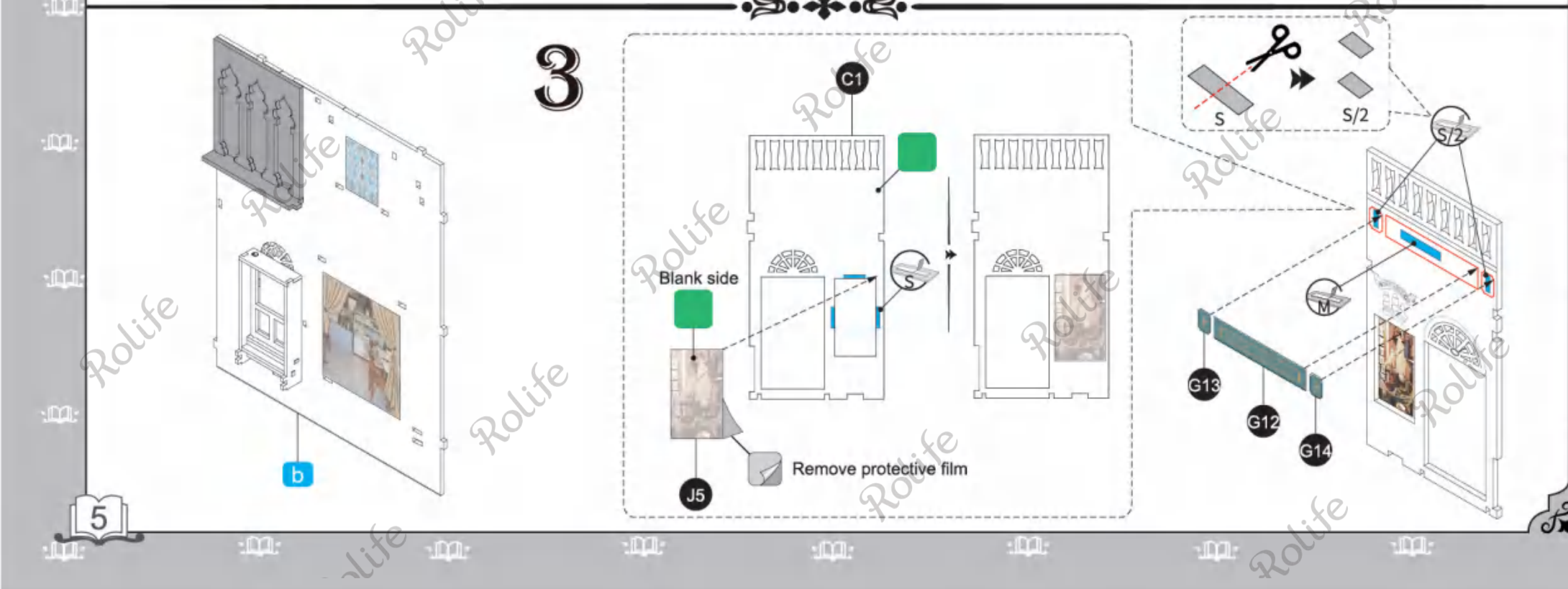
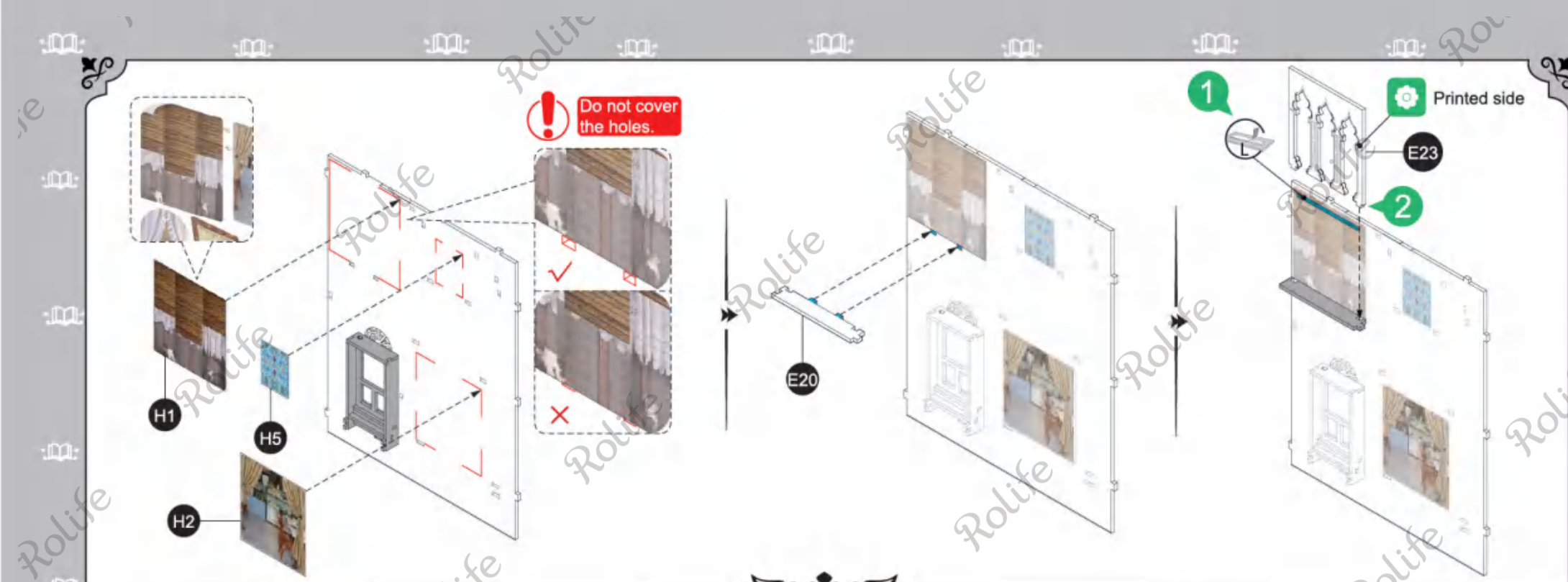
Special attention in assembly

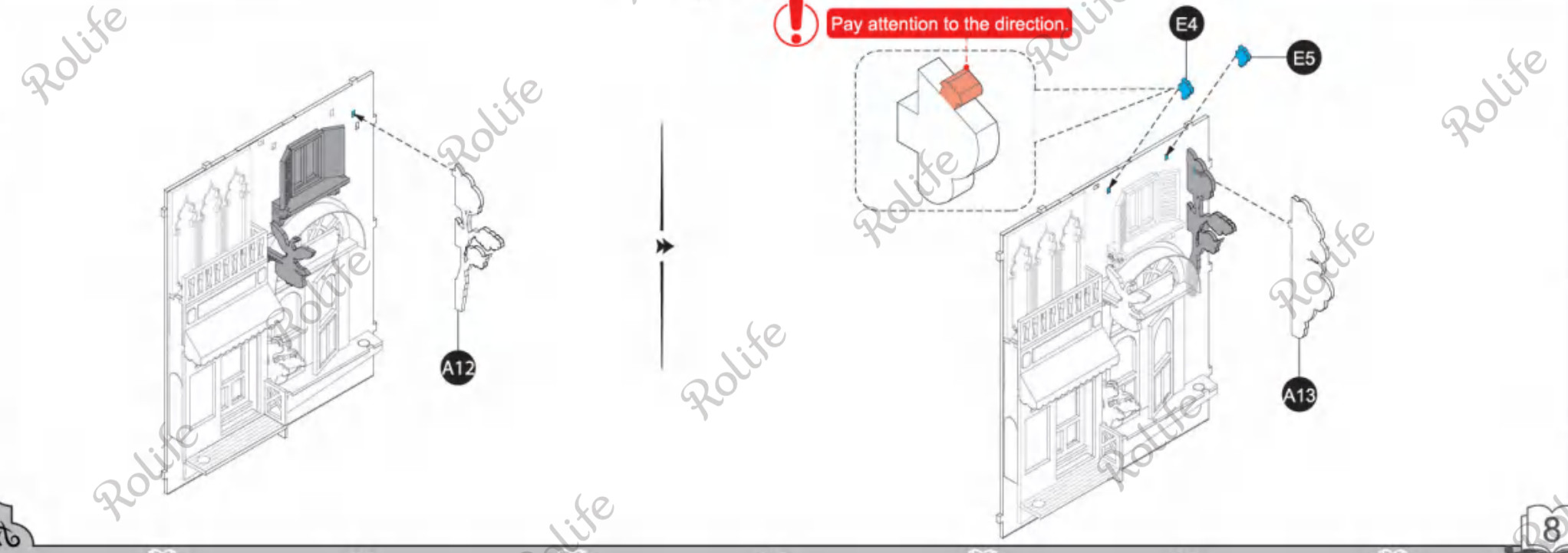
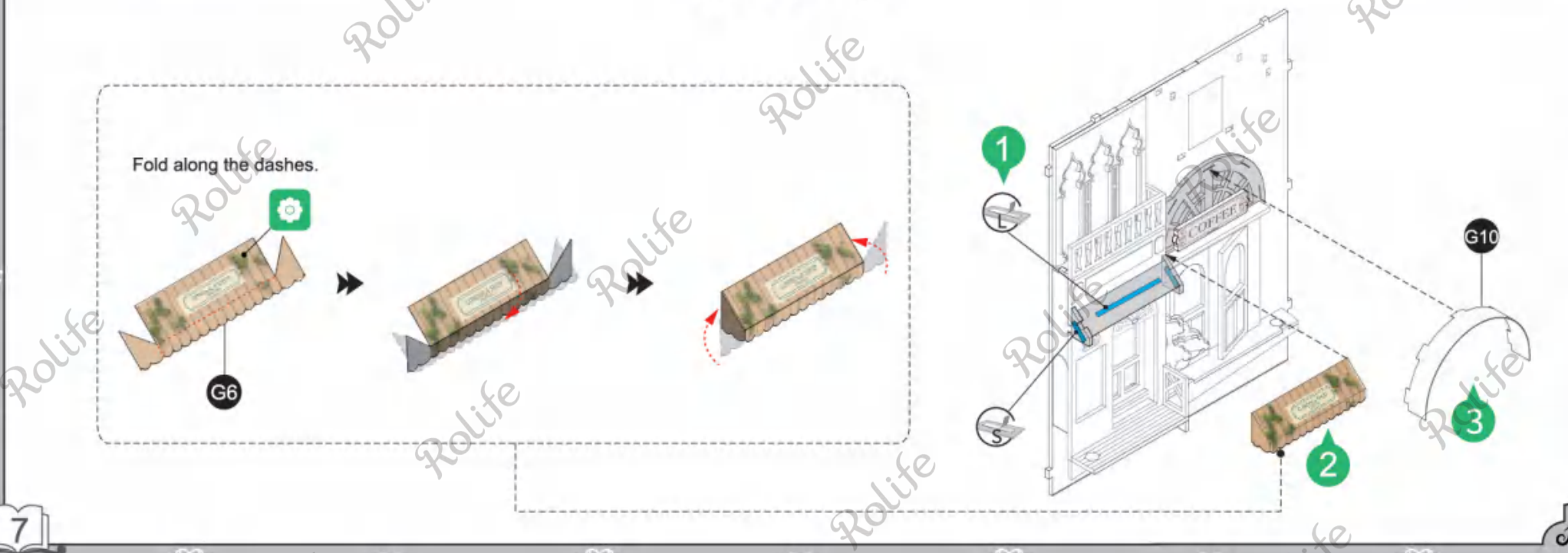
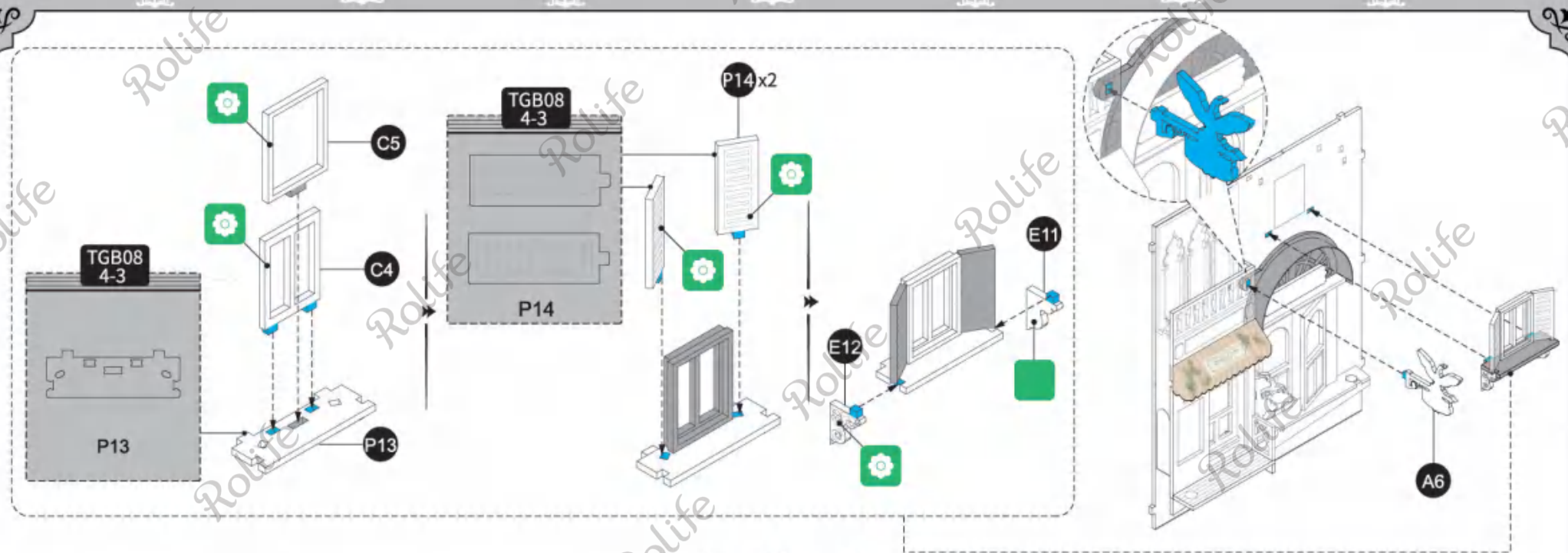
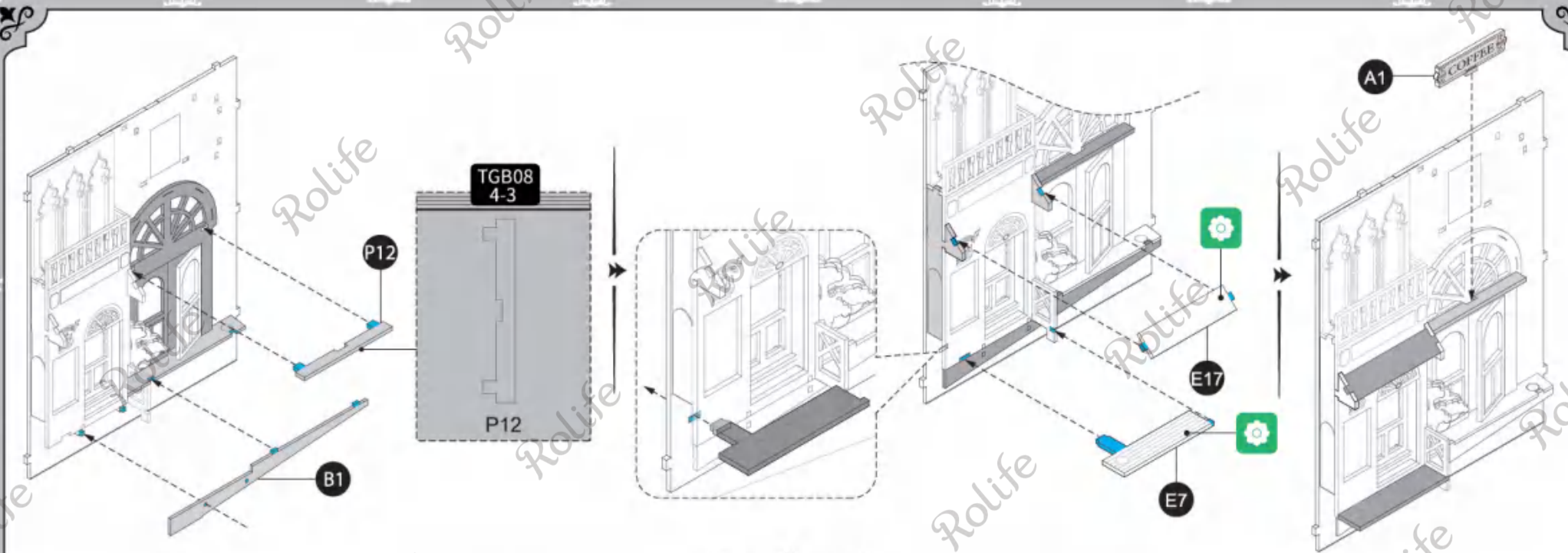
1

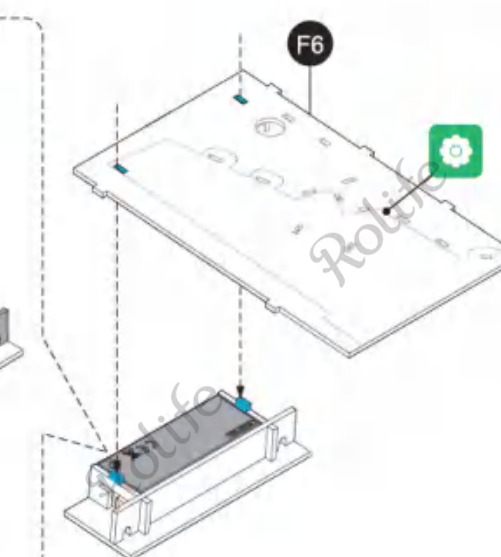
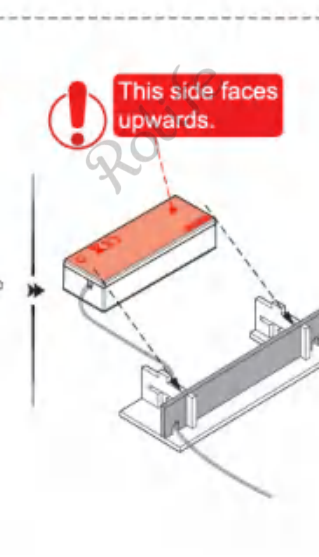
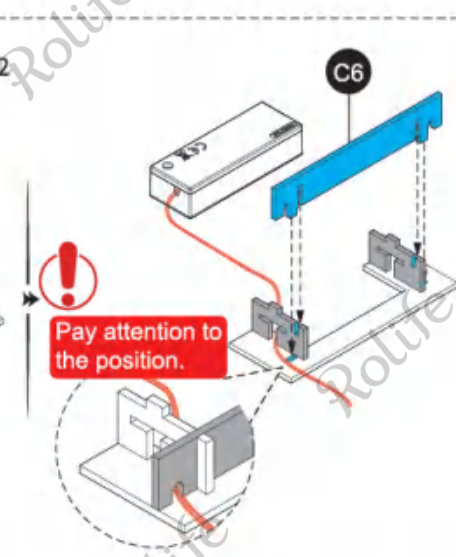
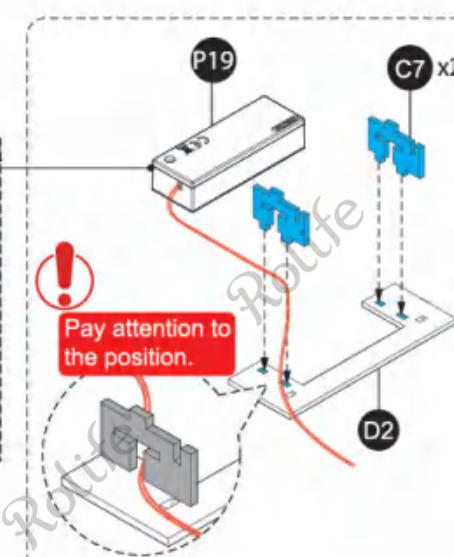
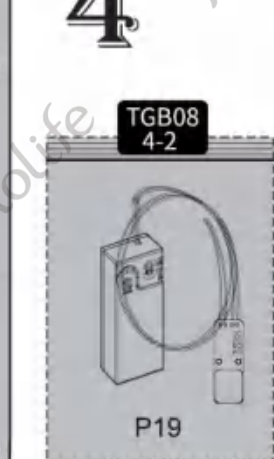
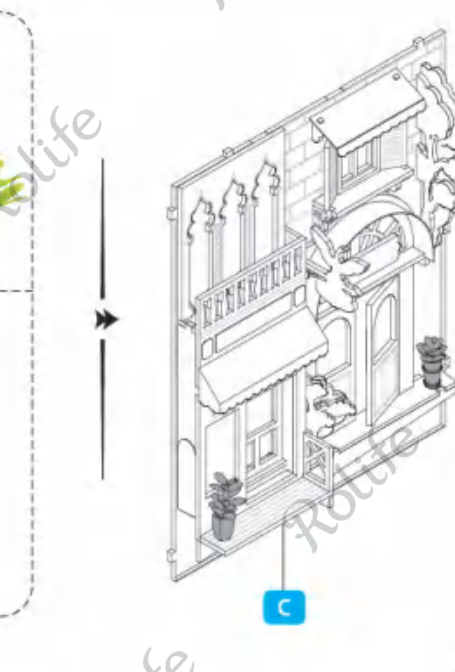
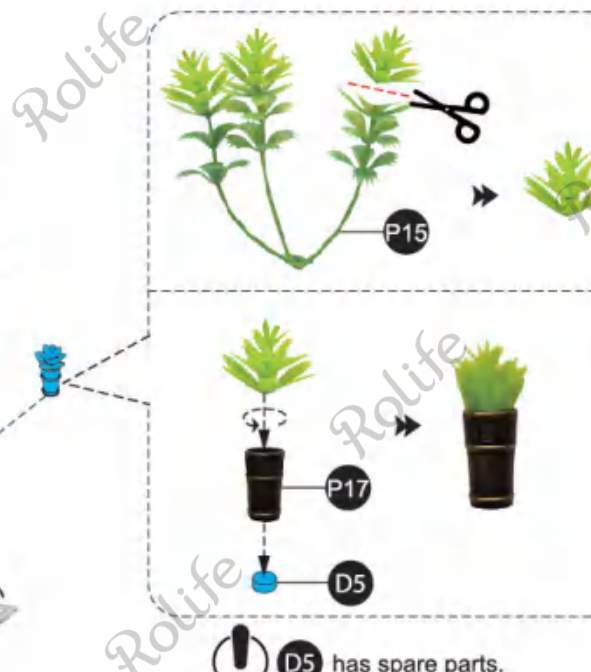
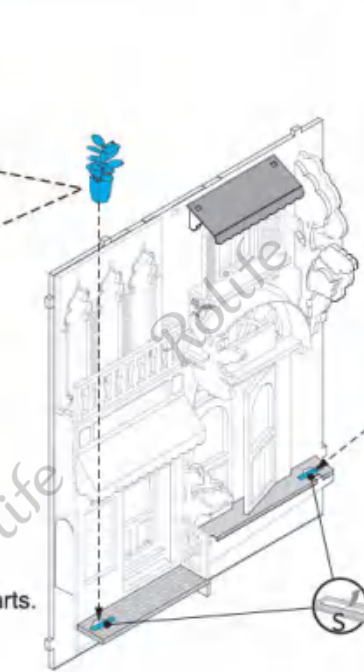
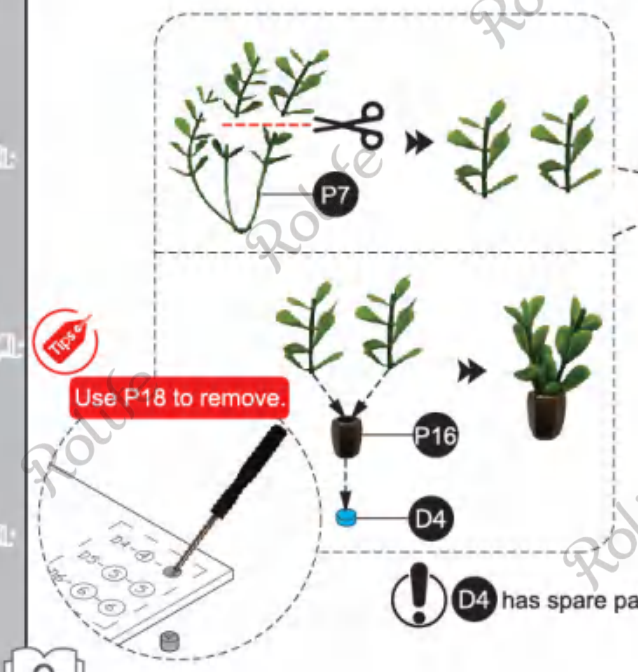
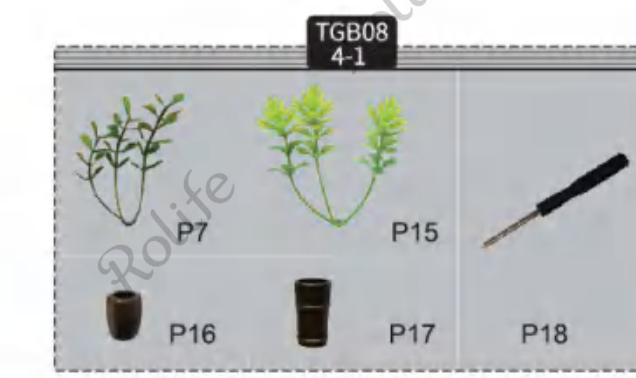
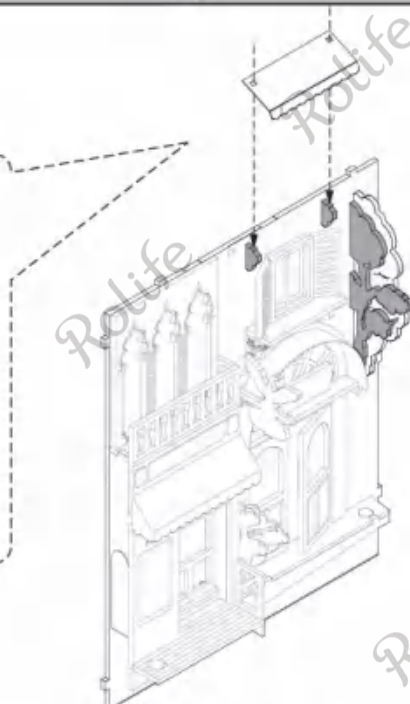
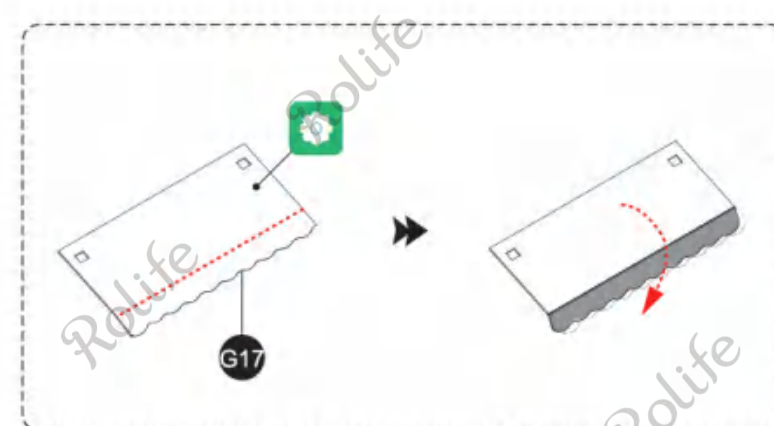


2





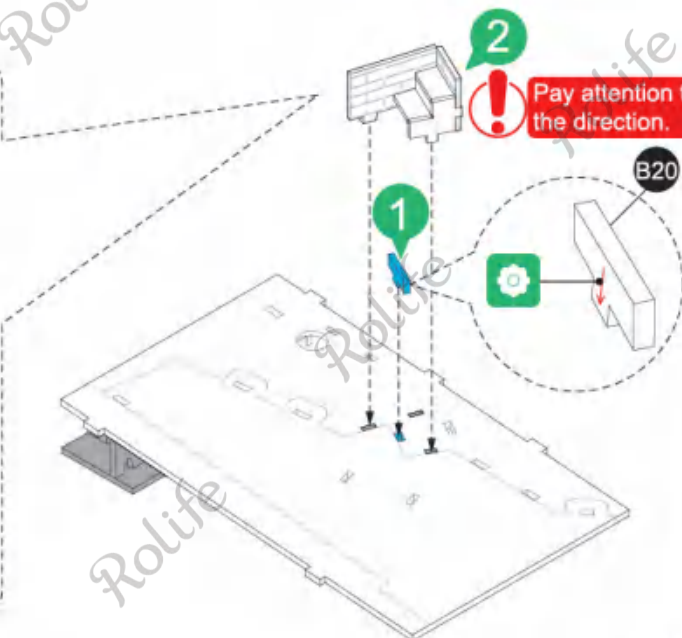
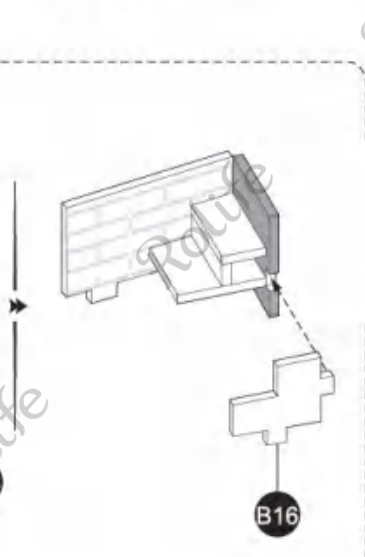
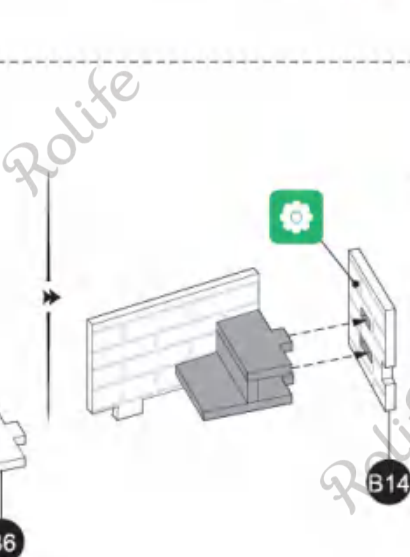
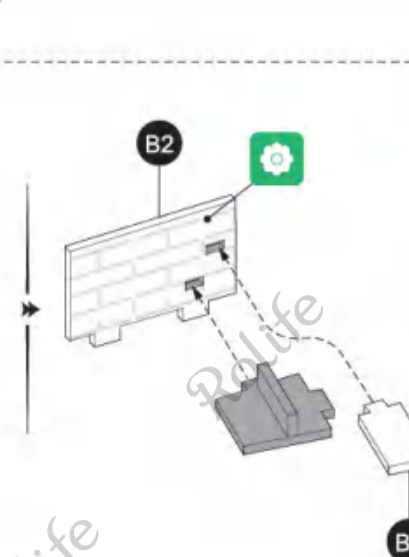
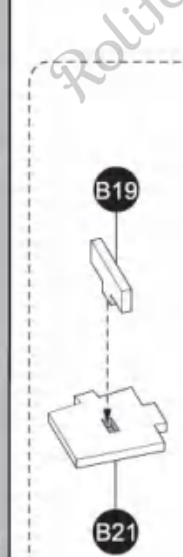




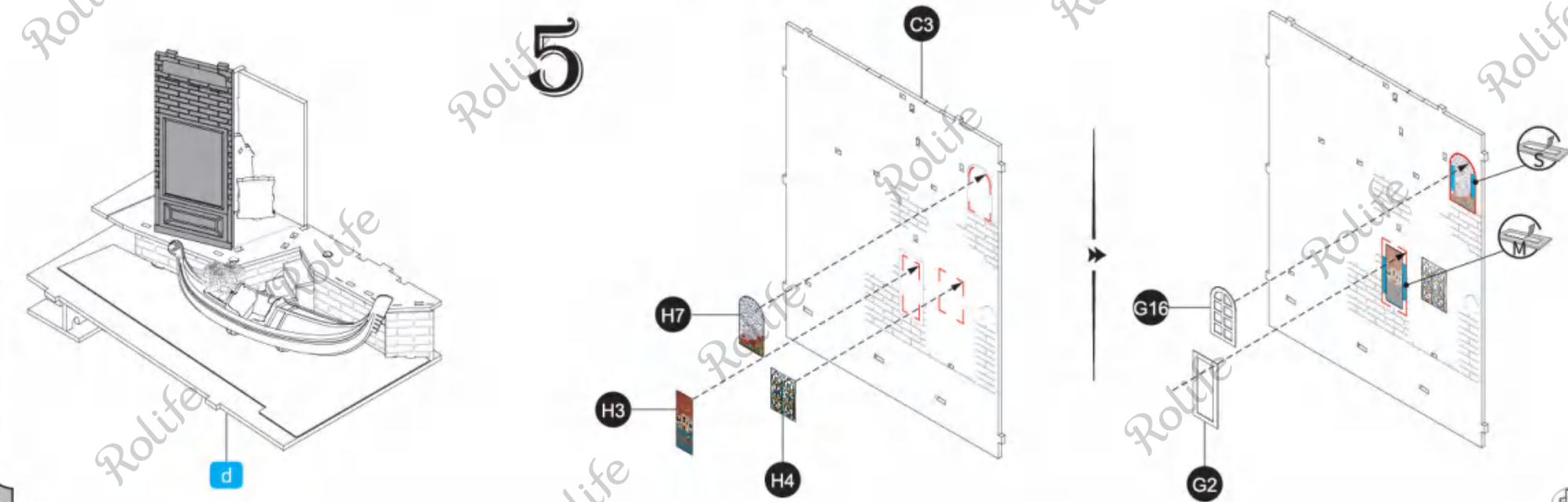
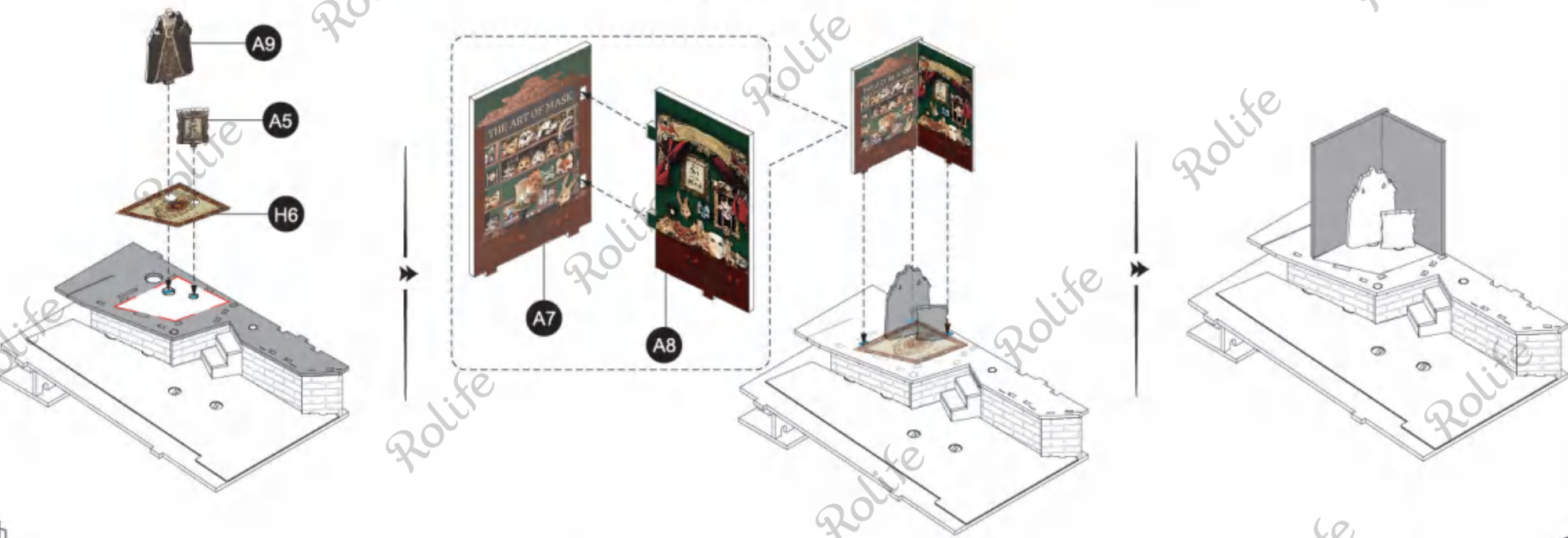
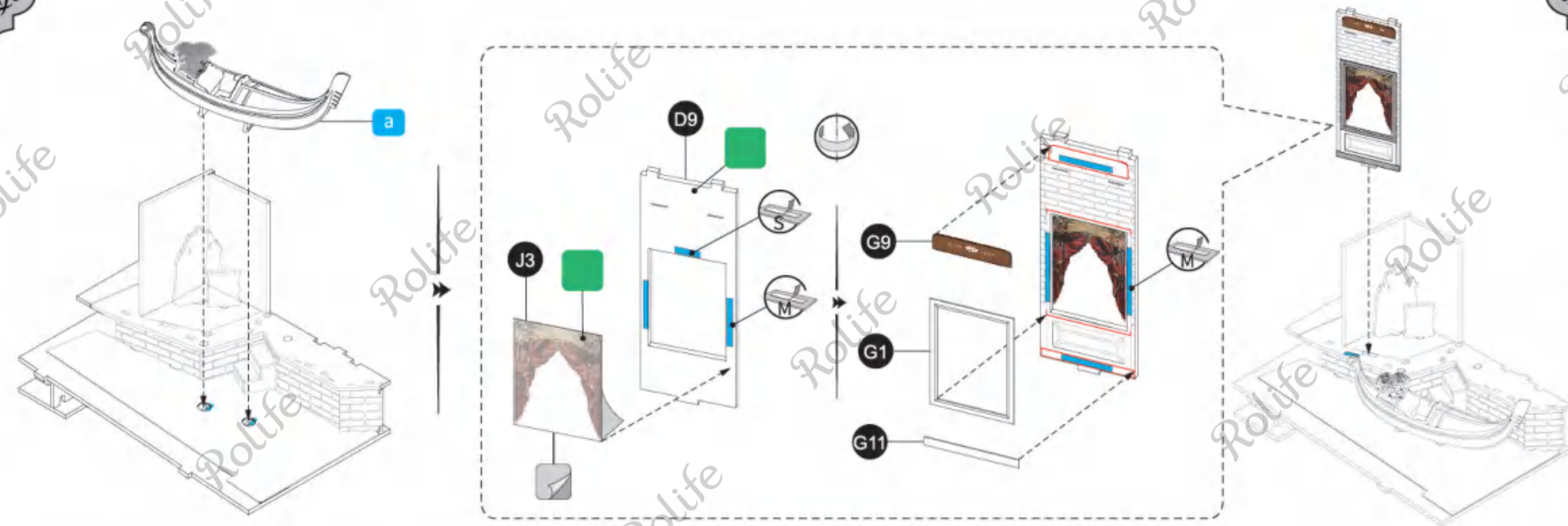
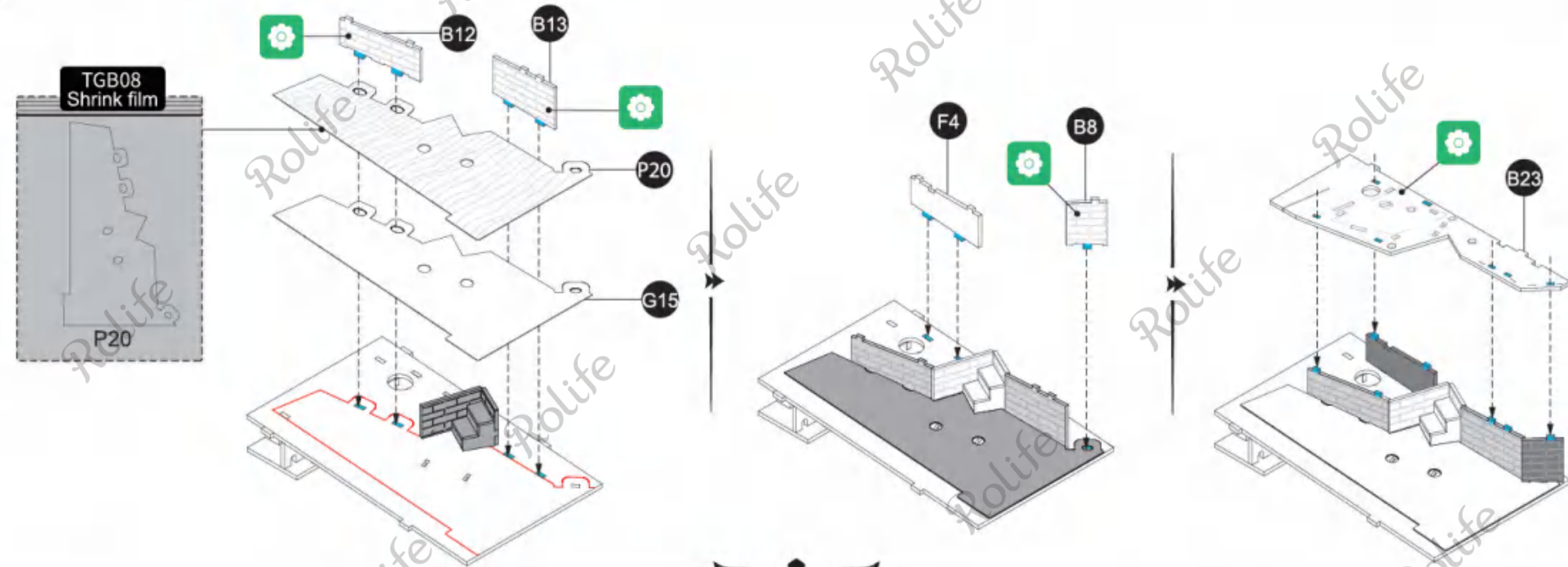
Pay attention to the position.

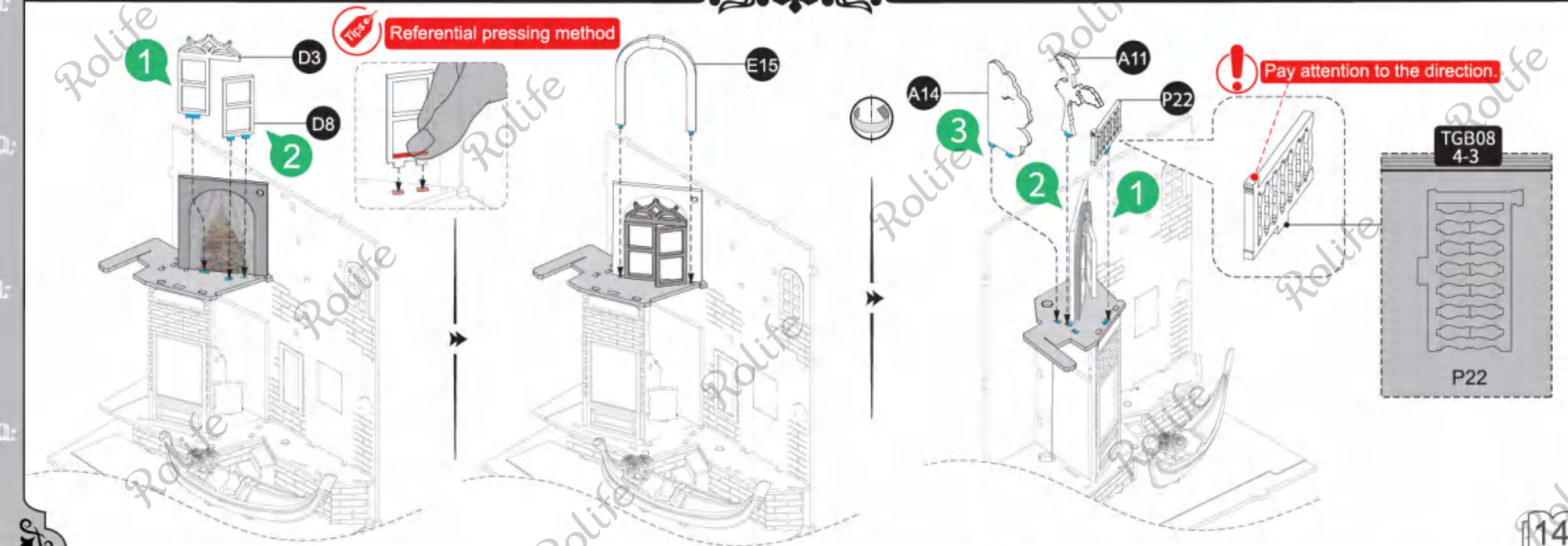
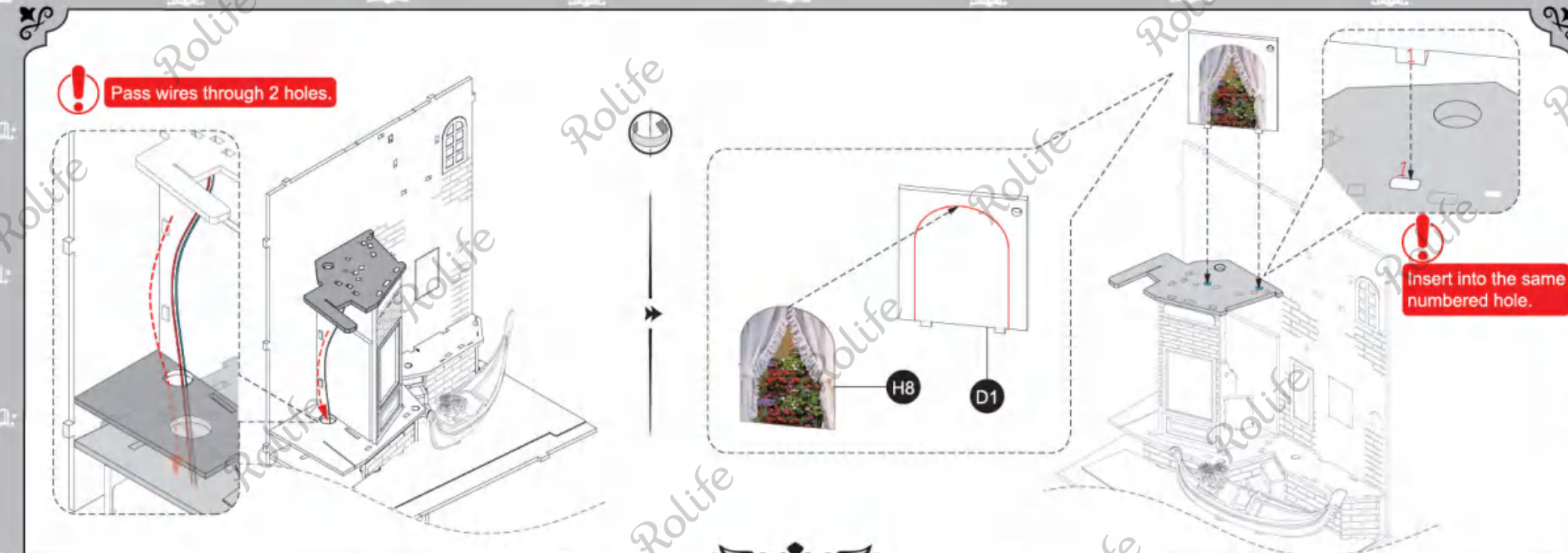
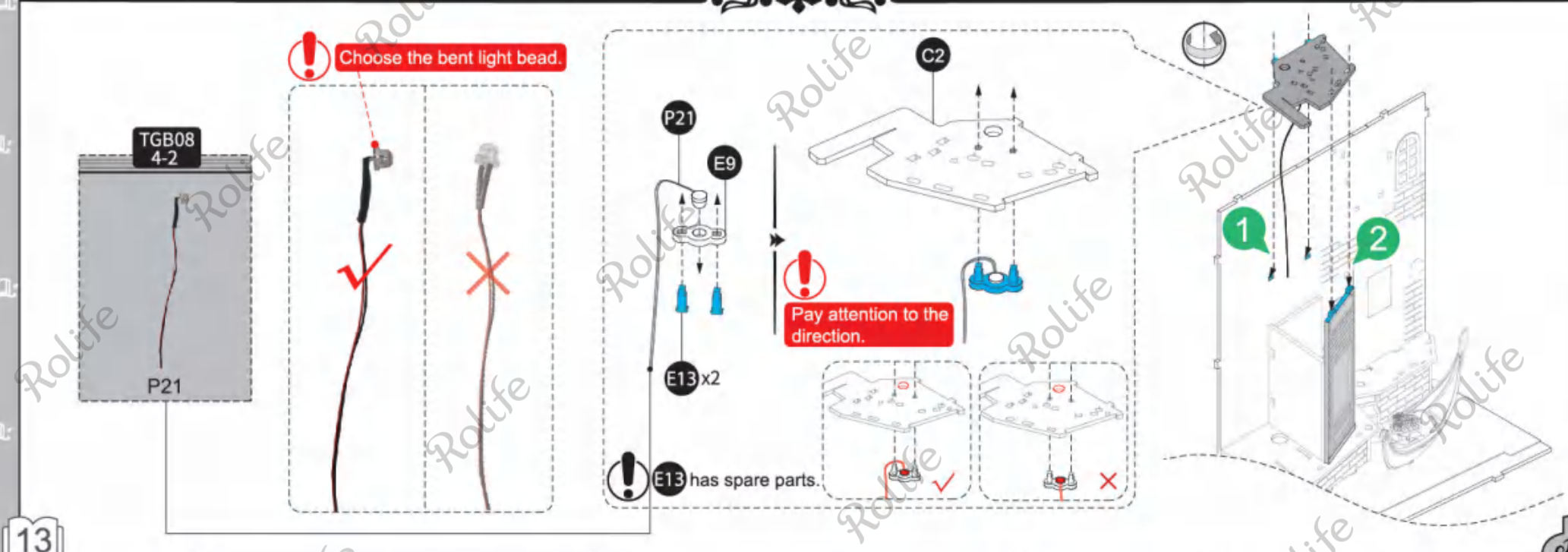
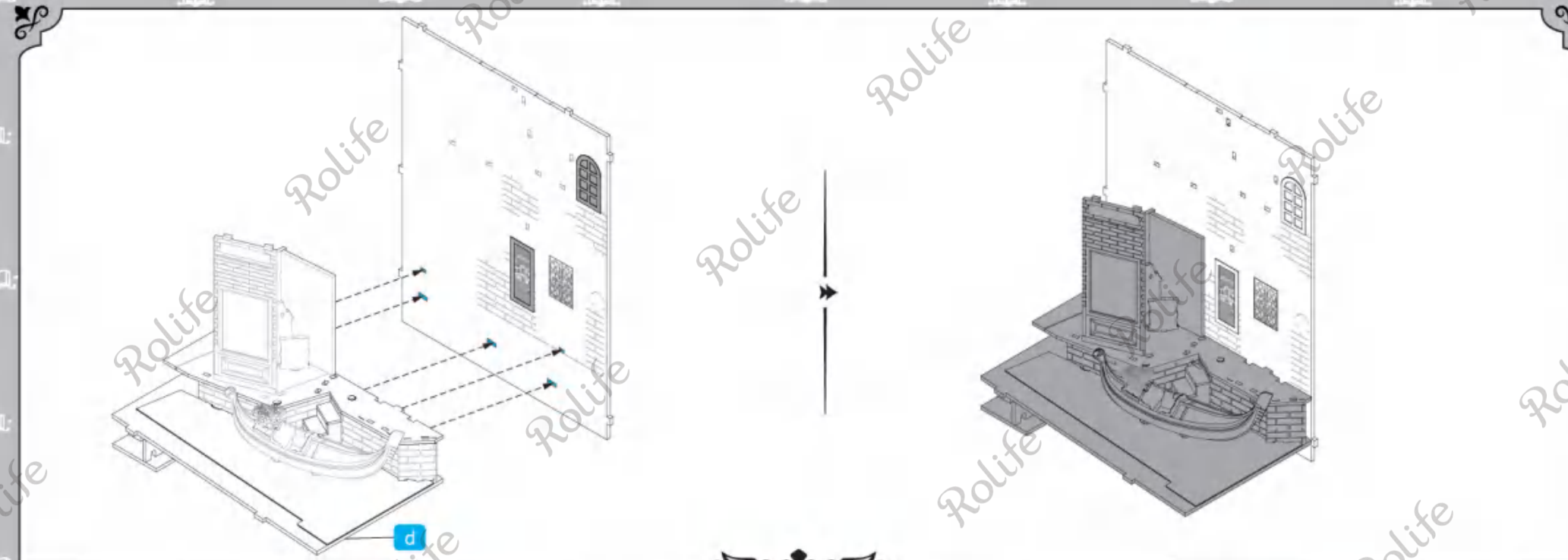
Pay attention to the position.

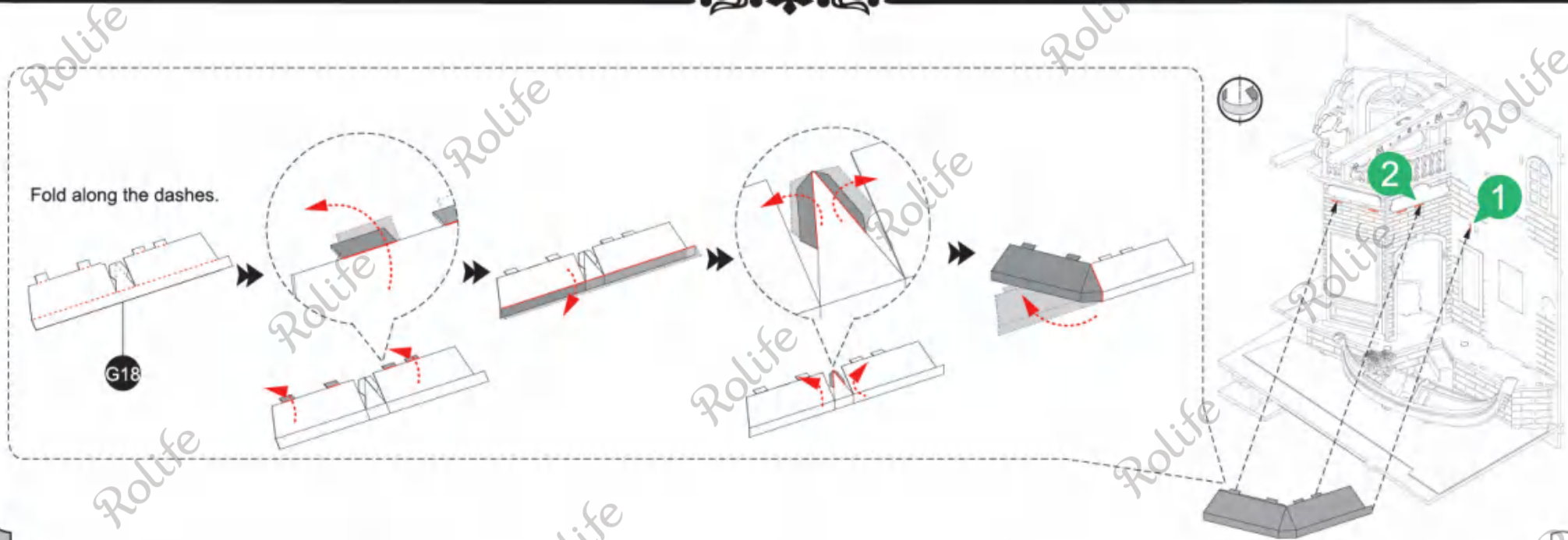
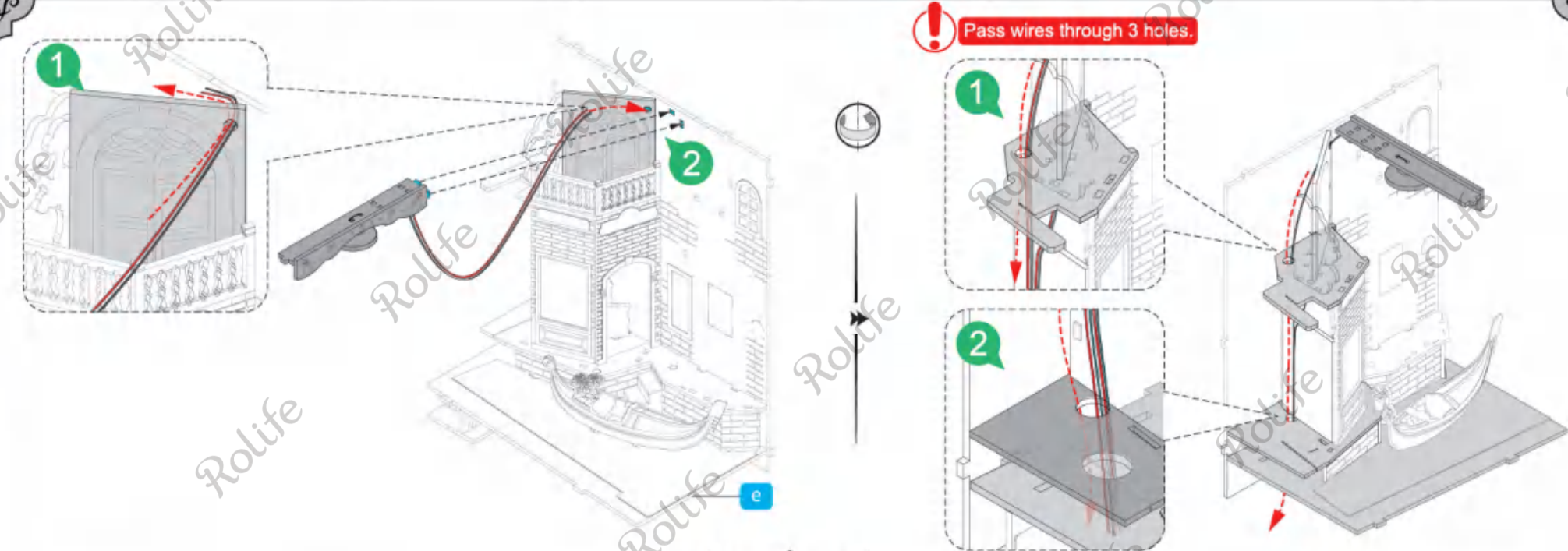
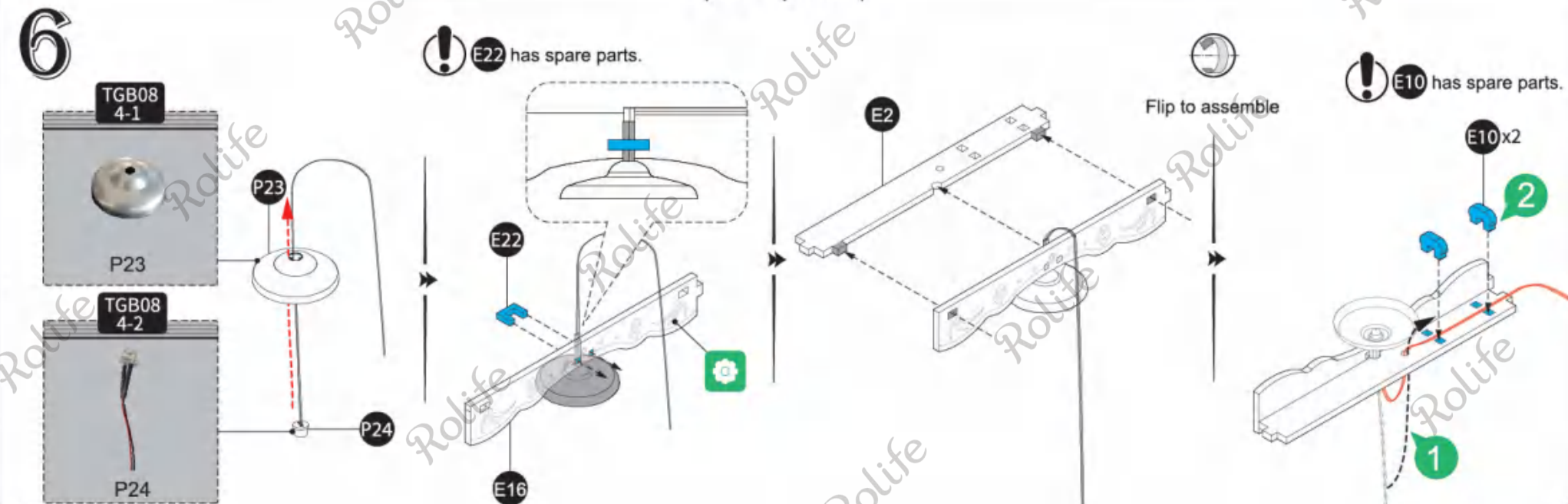
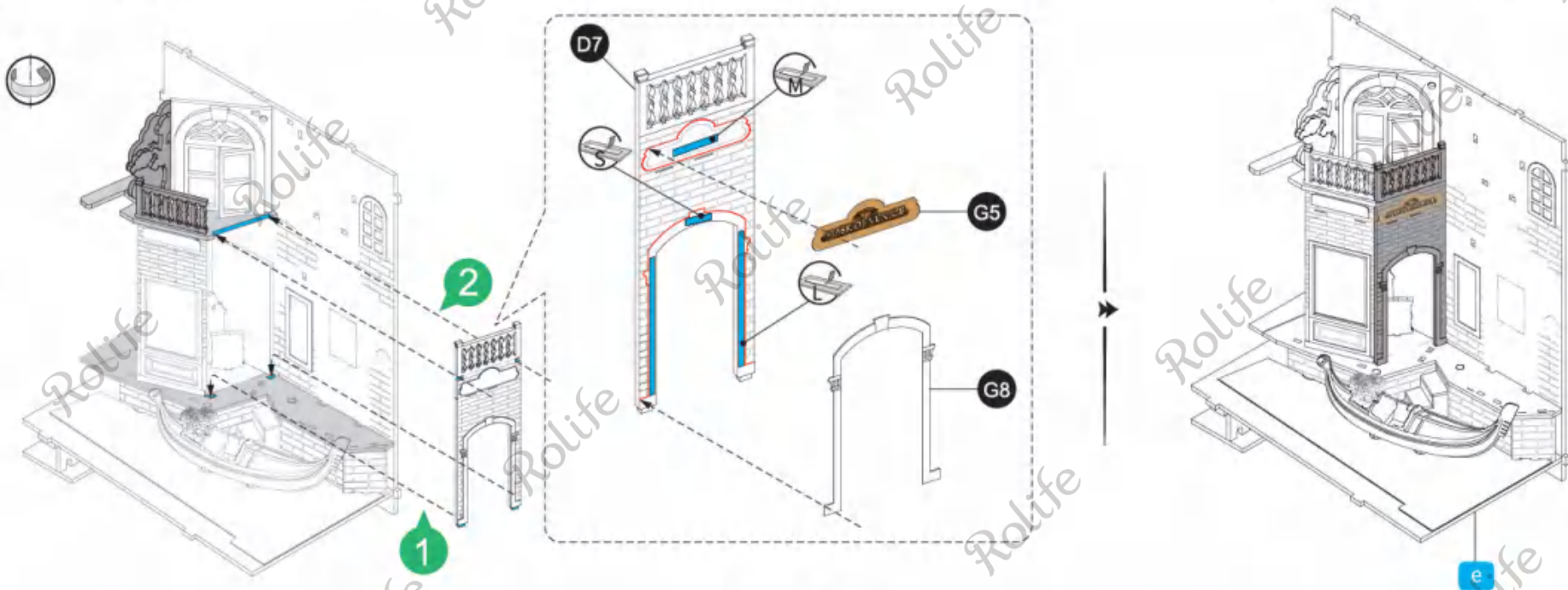
This side faces upwards.



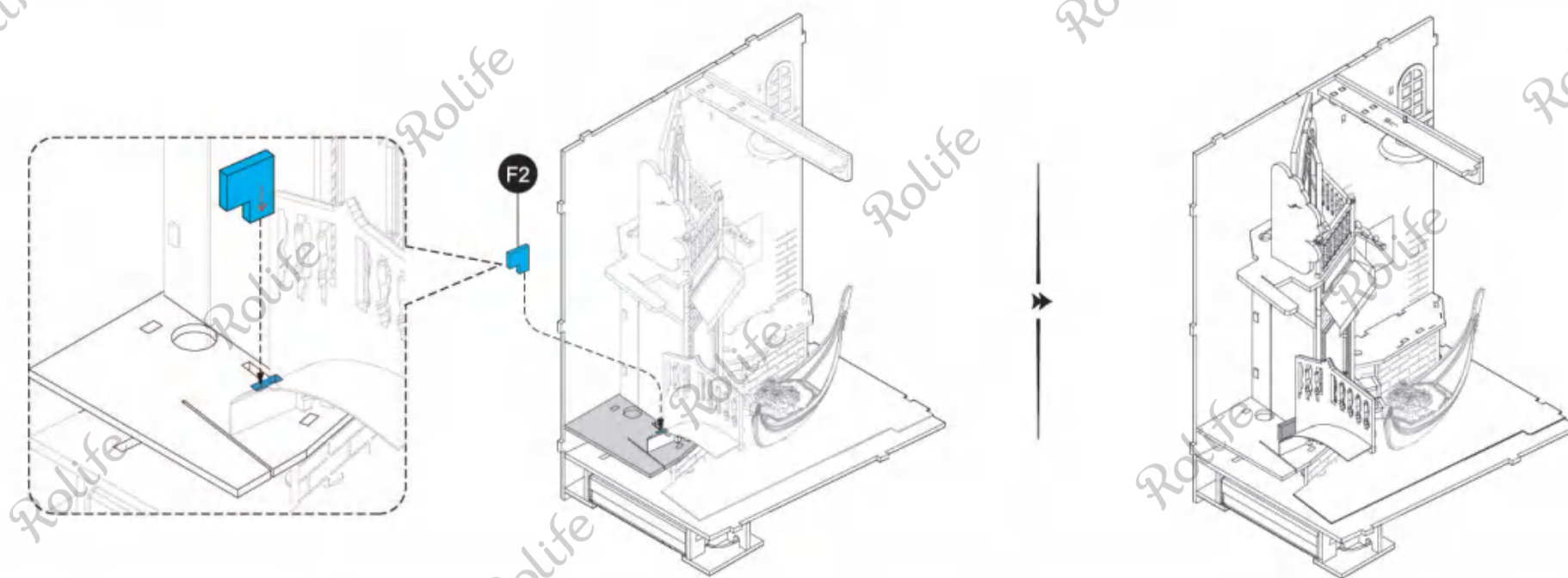
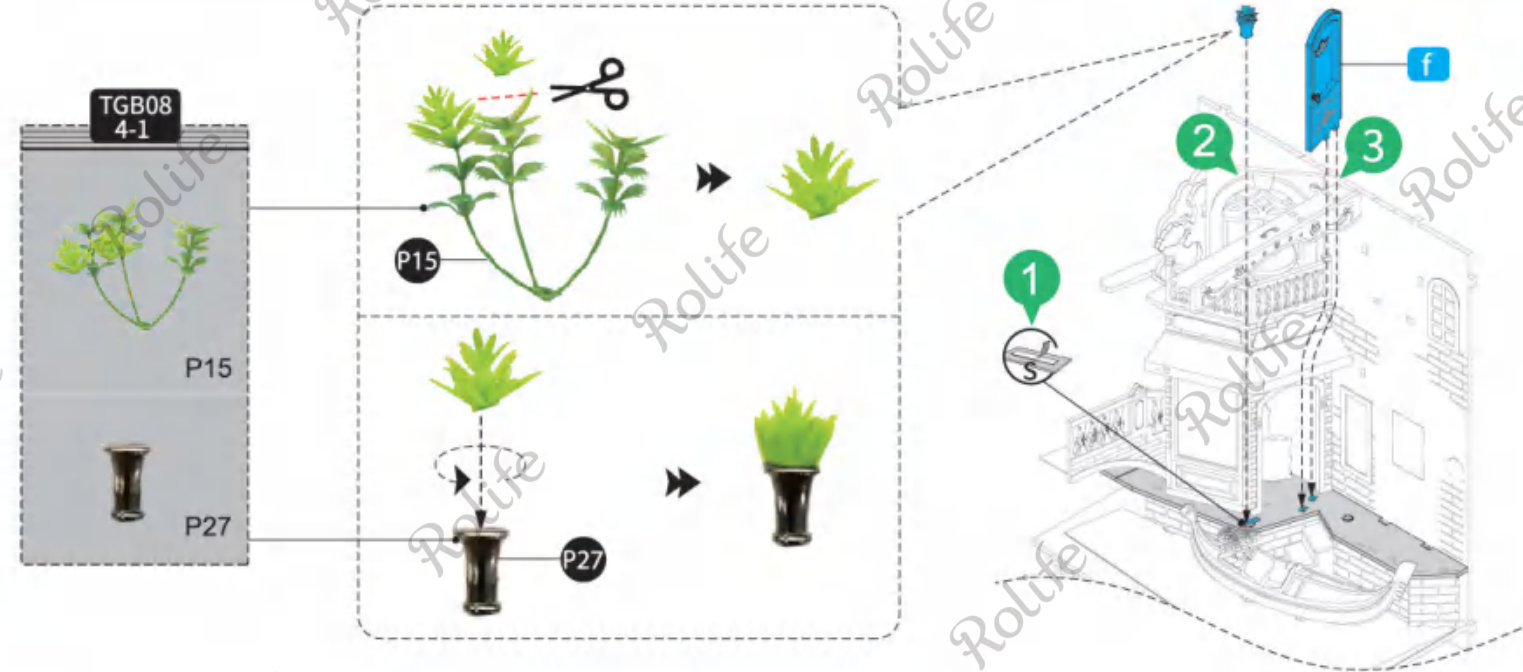
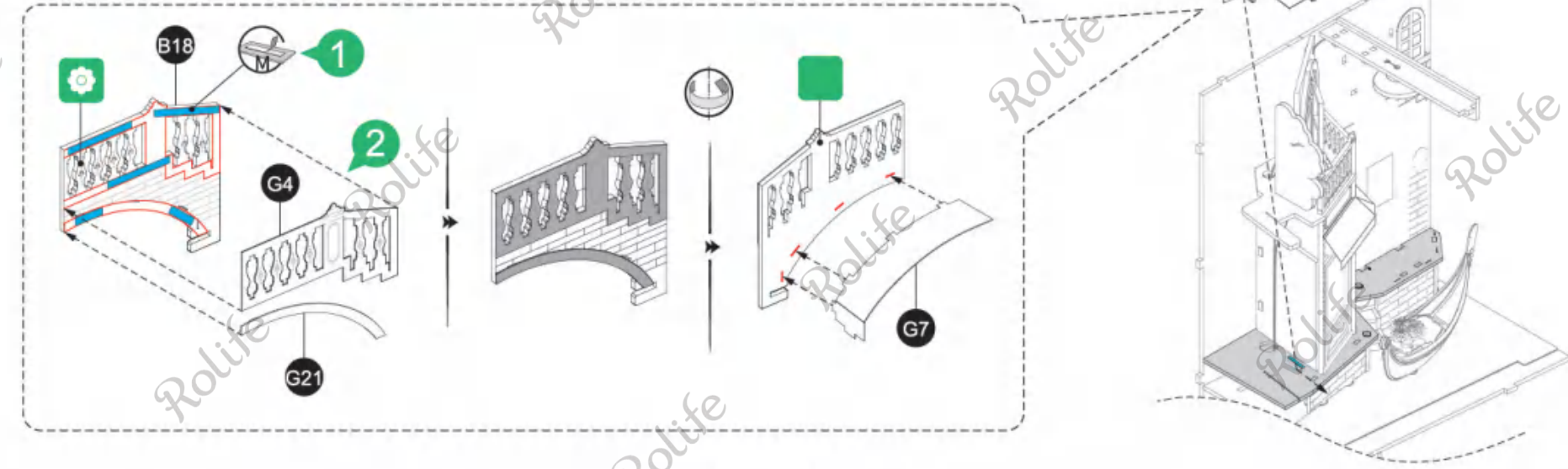
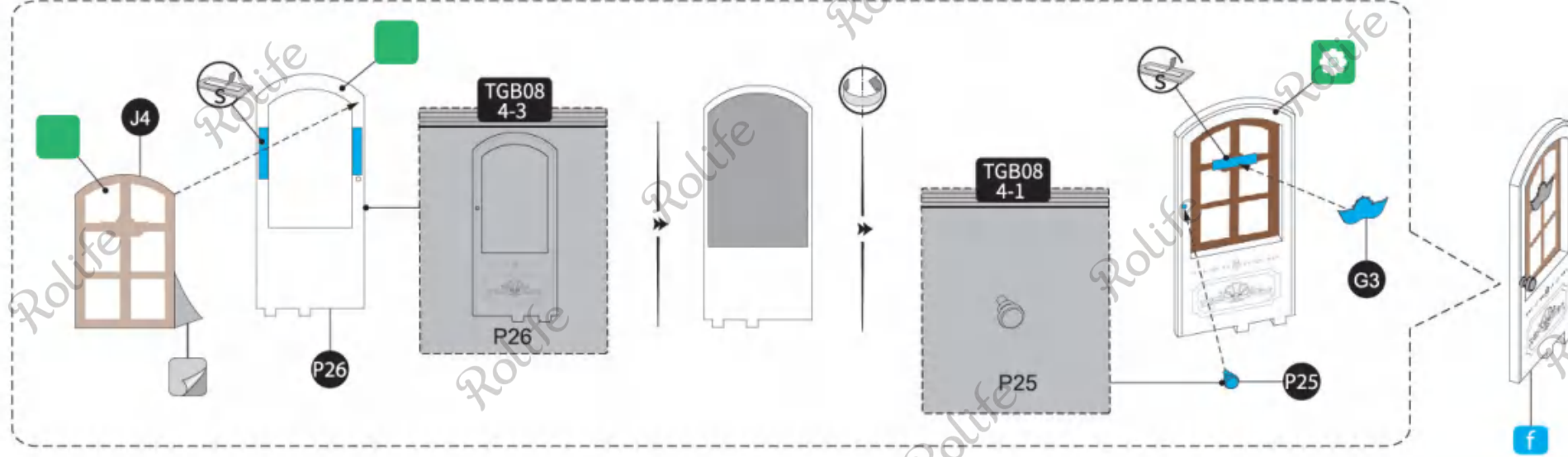
Pay attention to the direction.

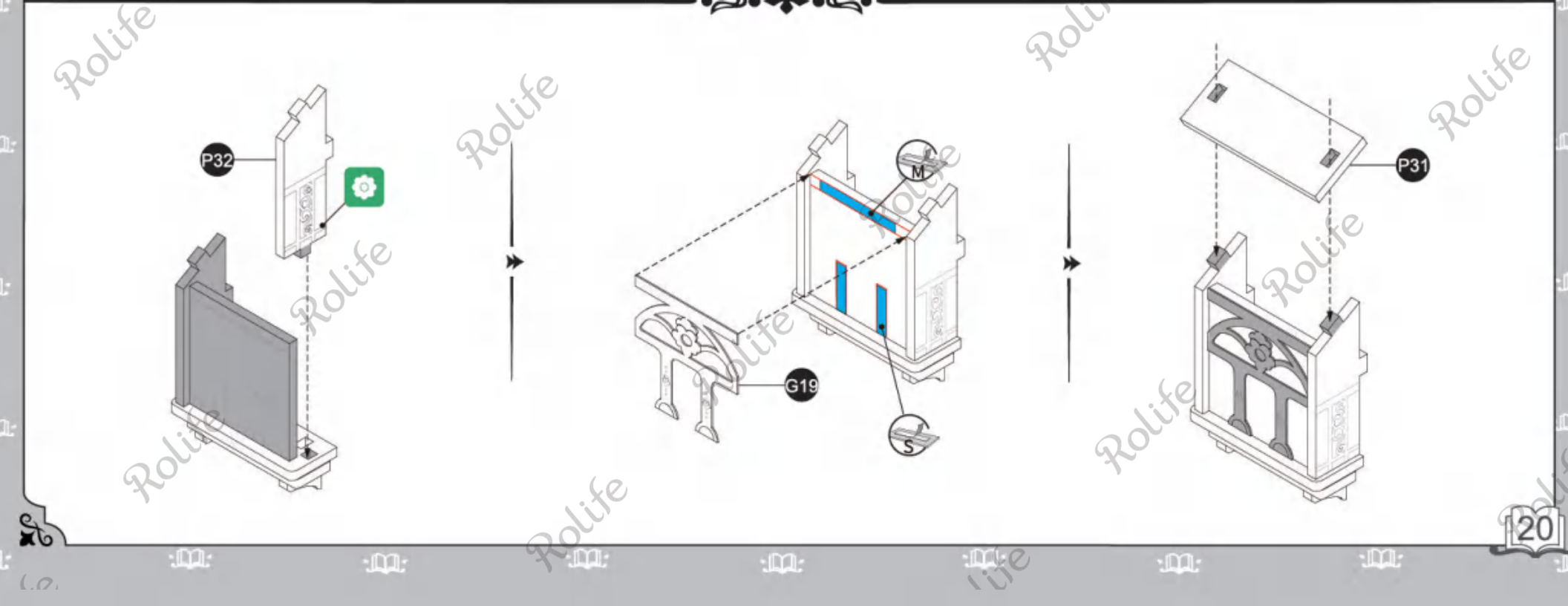
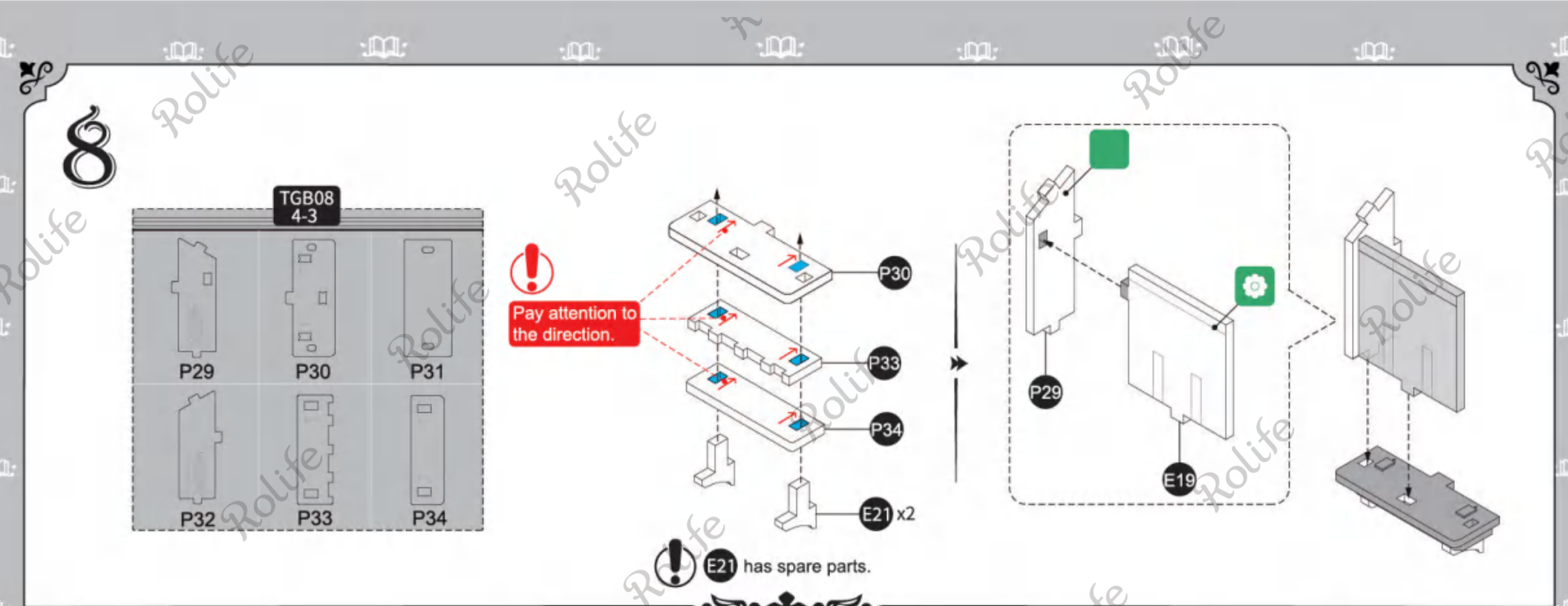
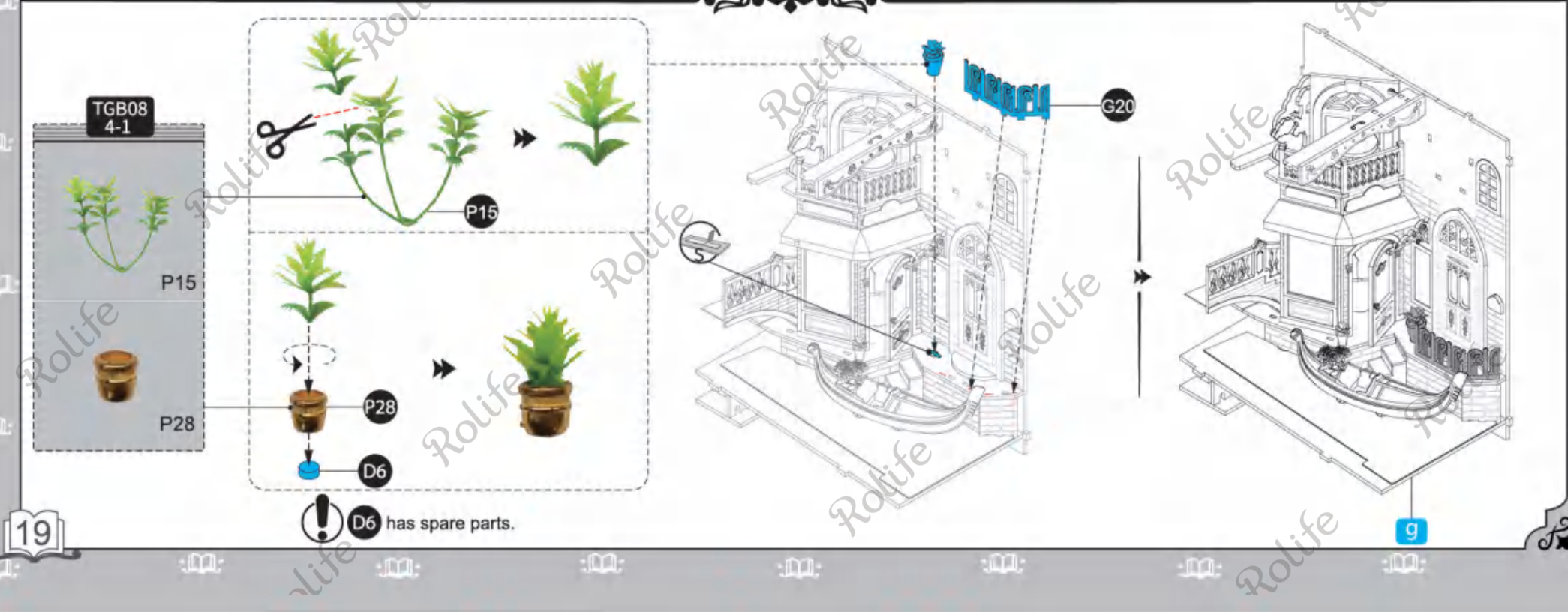
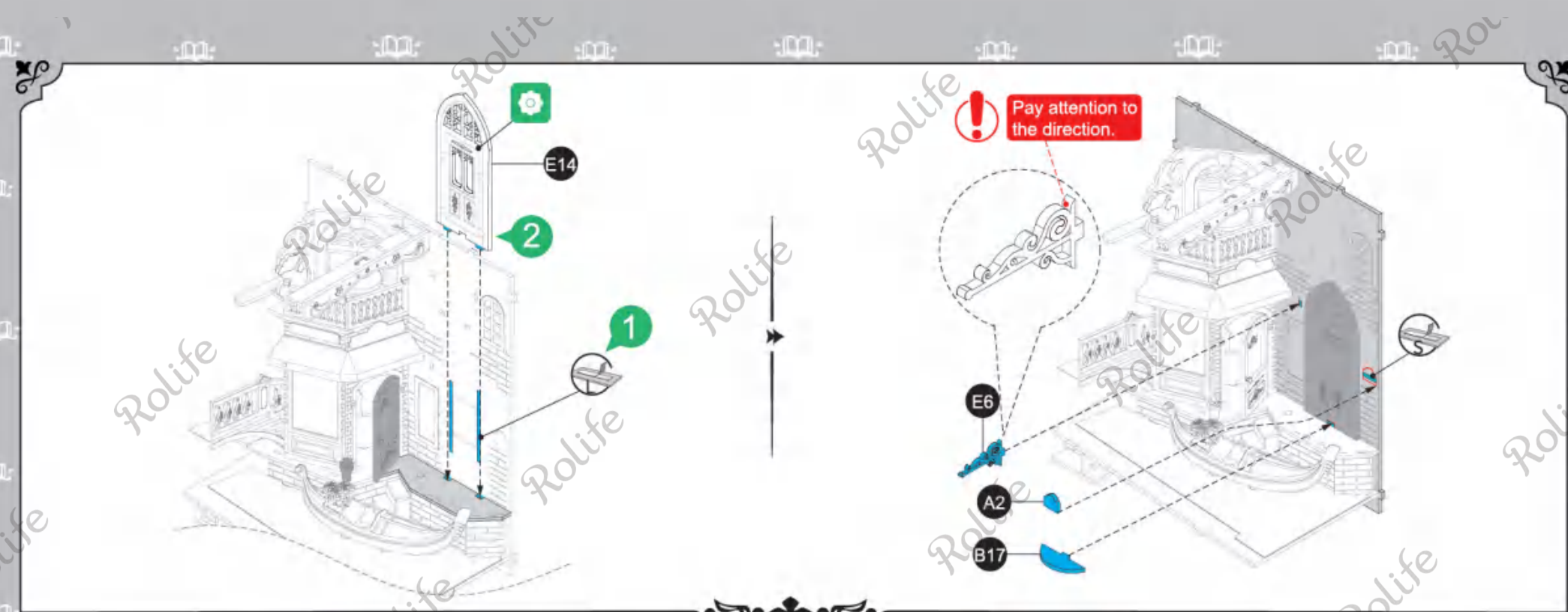


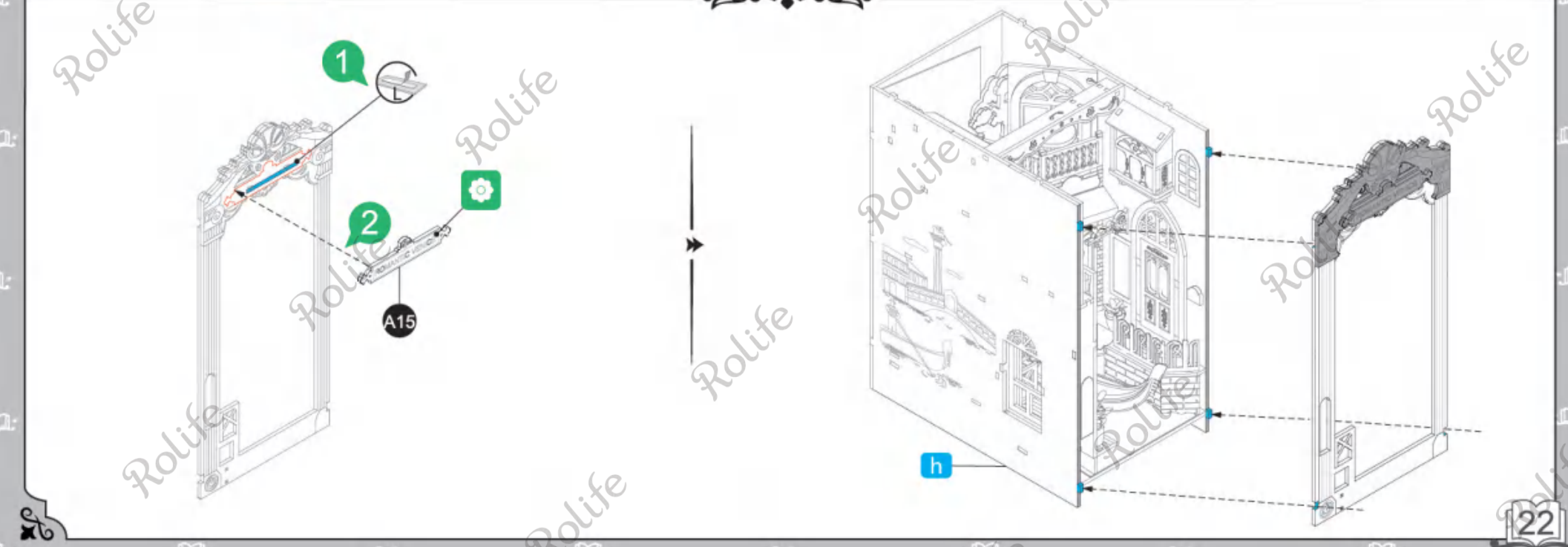
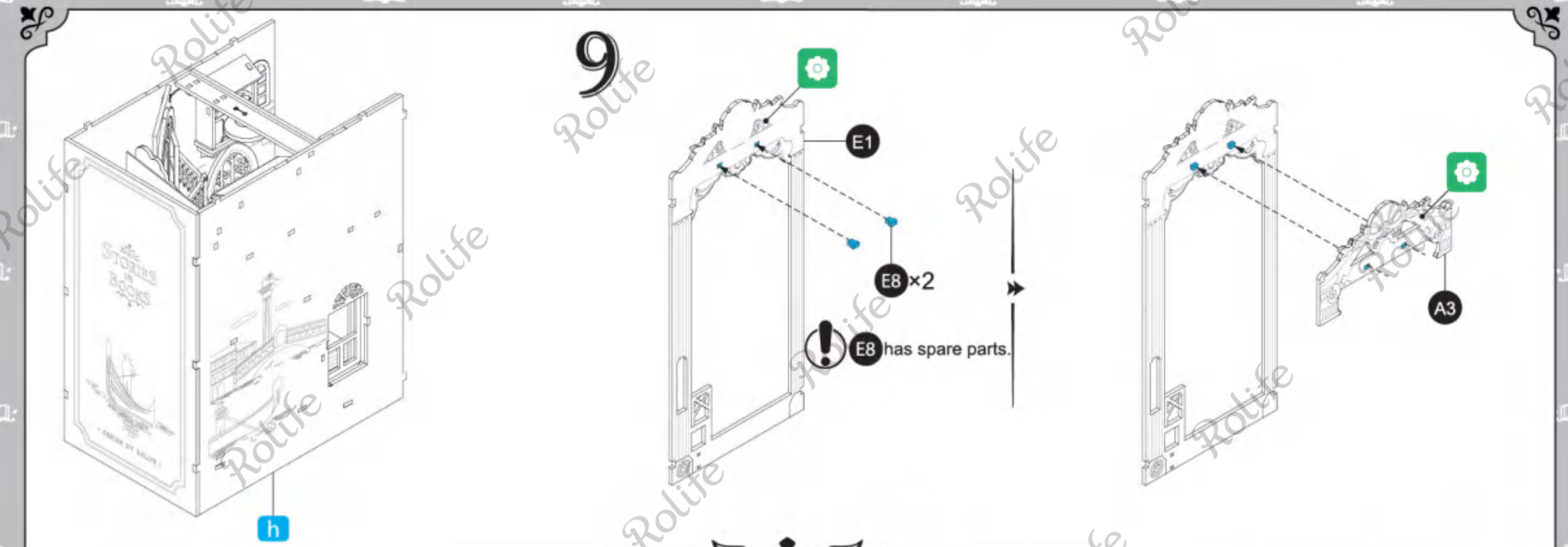
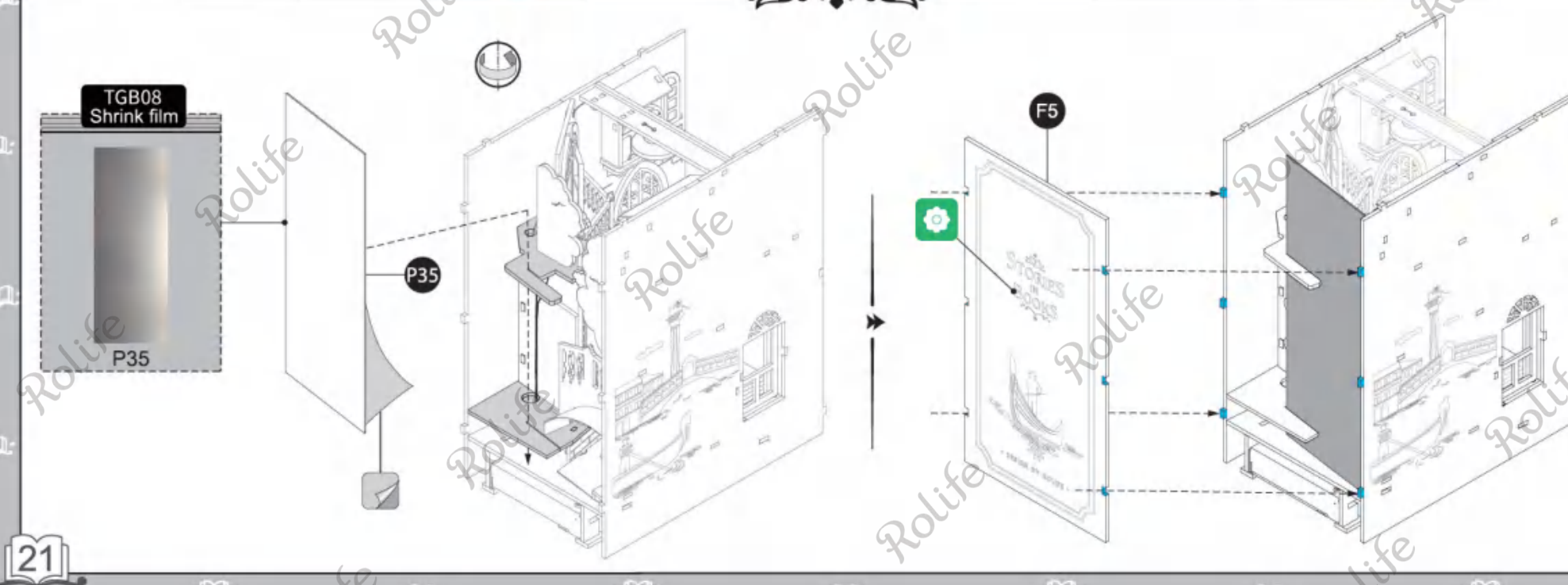
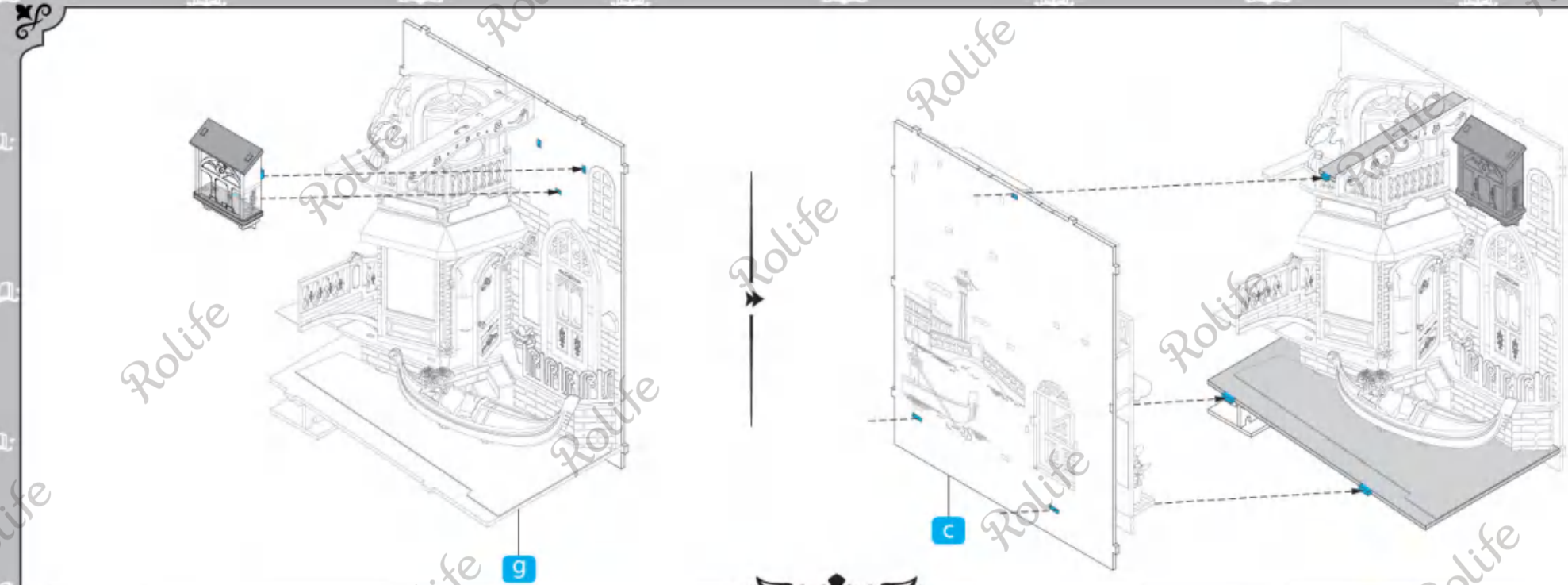


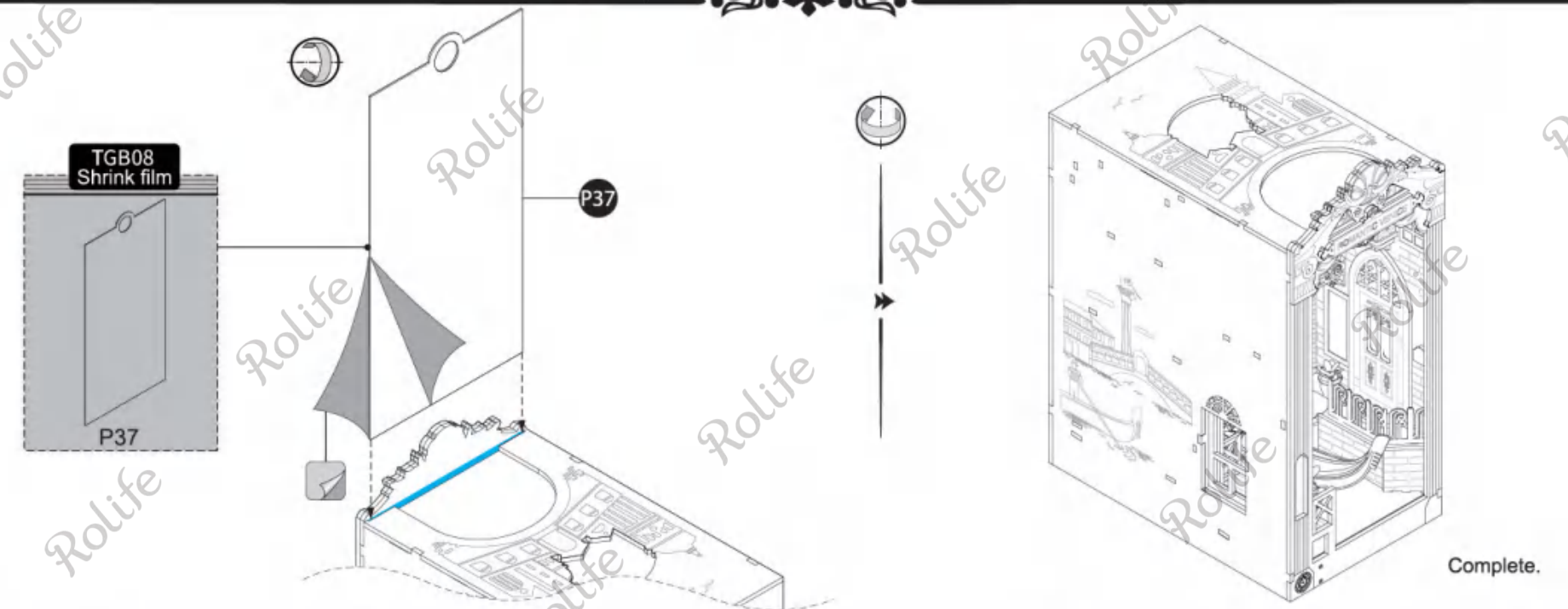
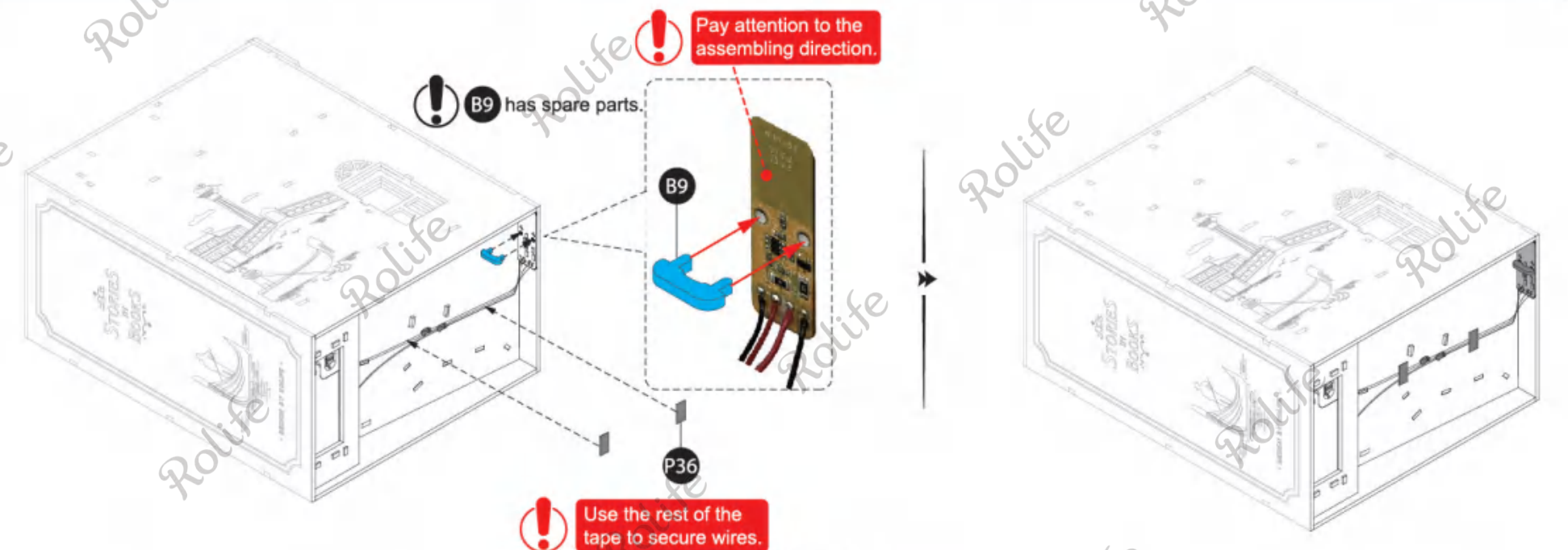
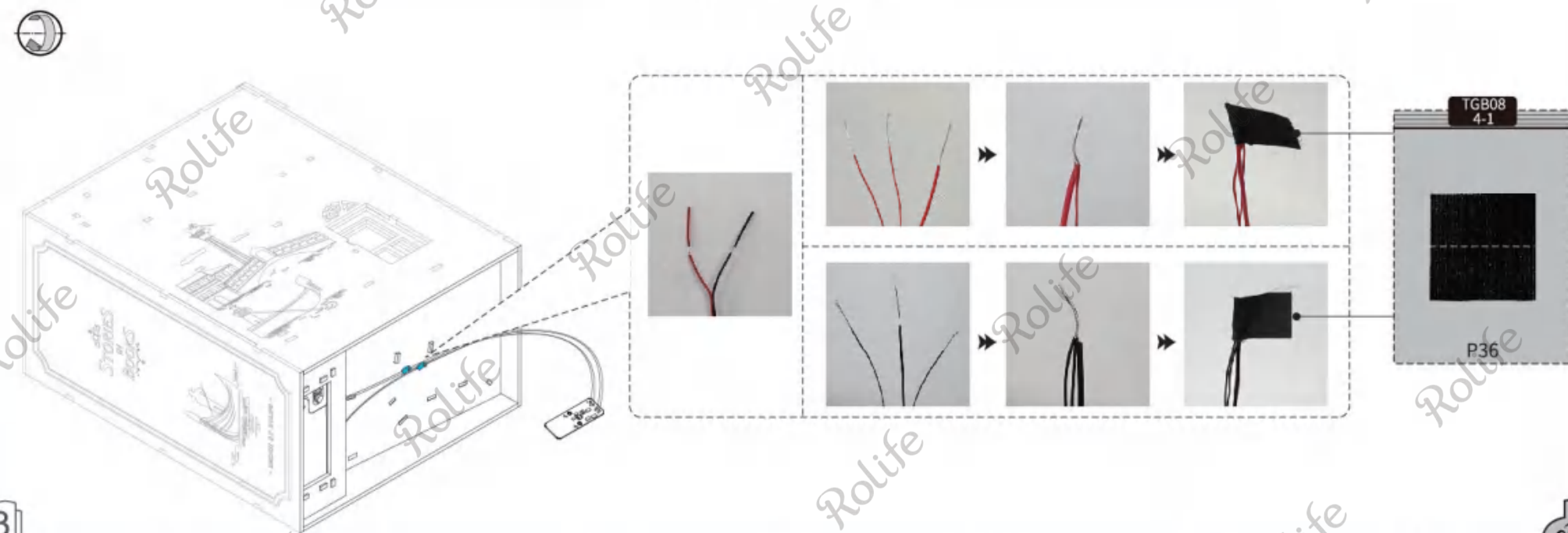
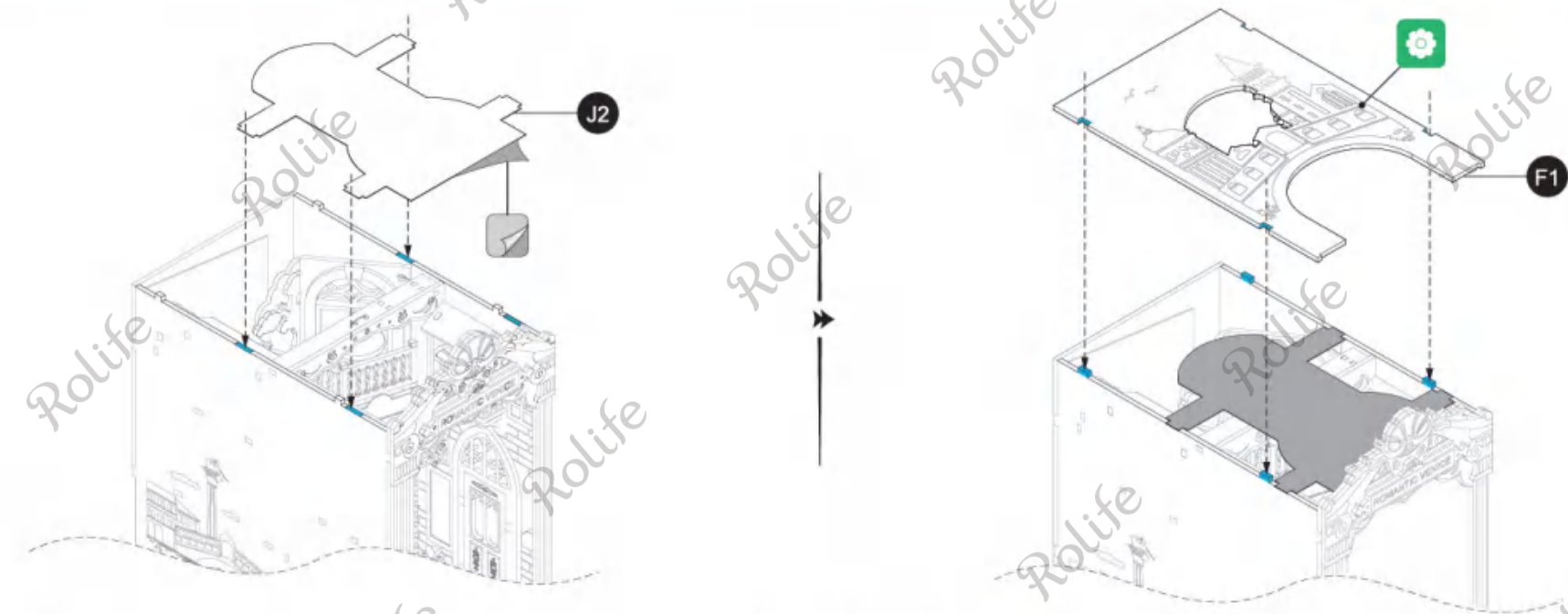


7







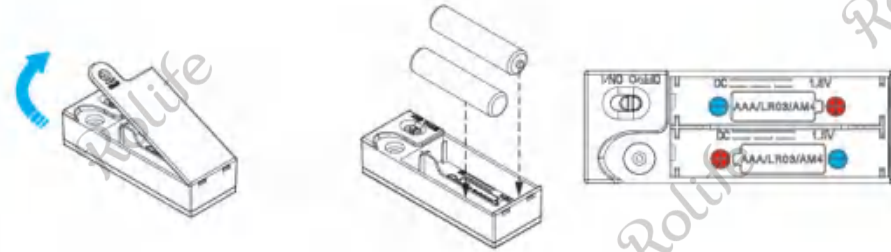


Light test

1. Self-prepare 2 "AAA/LR03/AM4 1.5V" batteries before testing.

2.

3.

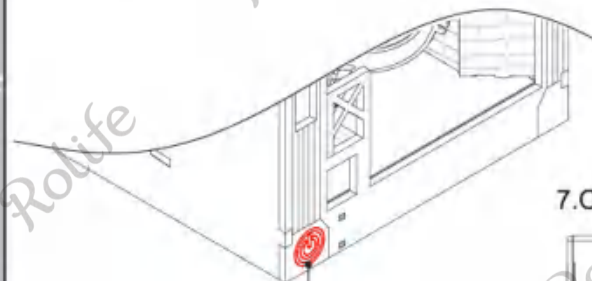


4.

5. OFF → ON



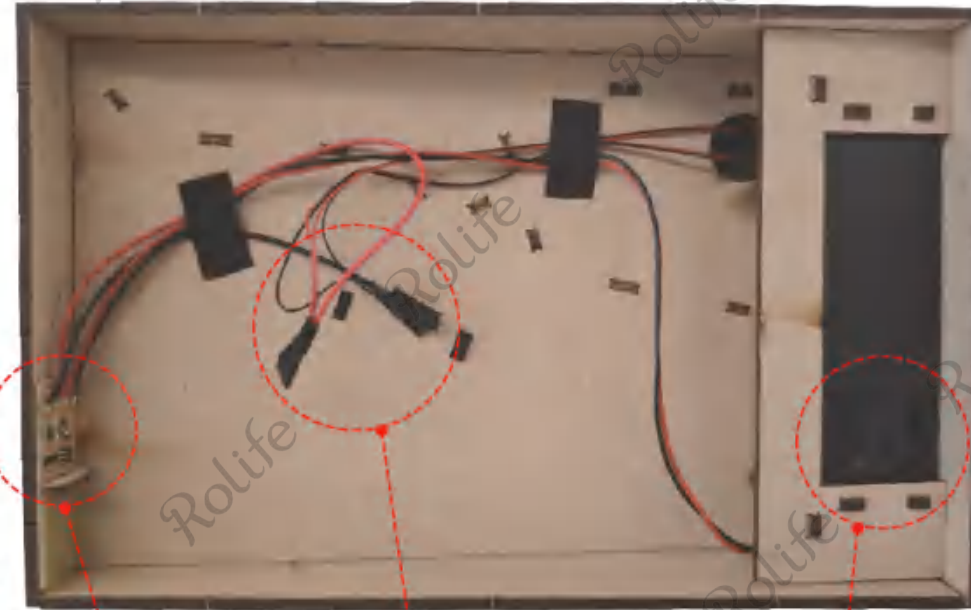
6. Touch the switch to check if the light bead works.



7. ON → OFF



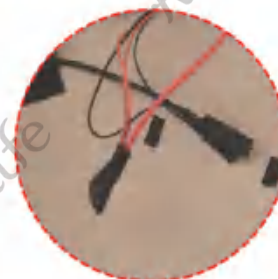
Problem shooting instructions



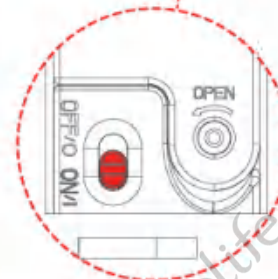
Check if the twined wires are the same color.
Check if the copper wire is exposed.
Check if the insulating tape wraps tightly.



Check if the touch switch is securely attached to the board.
Check if there is wire breakage.



Check if the switch is "ON".
Check if the batteries are correctly installed.
Check if the batteries have power.



**BOOK NOOK
& WONDERLAND**

**ROMANTIC
VENICE**
• TGB08



ROLIFE Facebook



rolife.robotime.com/



TGB01
Sakura Densya



TGB02
Sunshine Town



TGB03
Magic House



TGB06
Garden House



TGB07
Bookstore



TGB09
Floral Corner