

Designed by **ROBOTIME**  
**www.robotime.com**  
MADE IN CHINA

49.2TGB01.100.B

Rolife

# Sakura Tensya

TGB01

Pictures for reference only. Please subject to our existing products.



## ⚠ WARNING

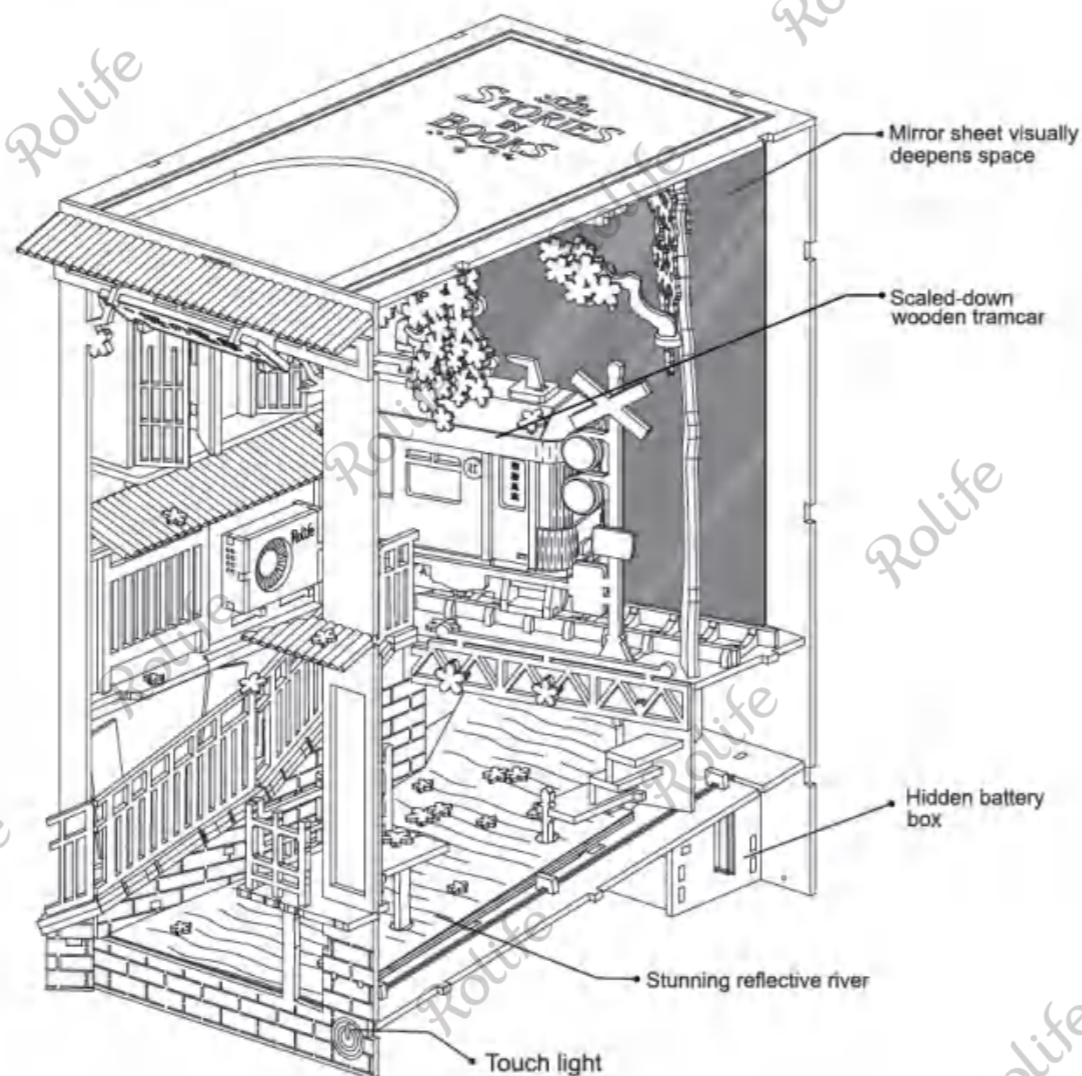
- The product requires 2 "AAA/LR03/AM4 1.5V" batteries (batteries for self-preparation).
- Before loading or removing batteries, please loosen screws on the cover of the battery box with the screwdriver first.
- Non-rechargeable batteries are not to be recharged.
- Rechargeable batteries are only to be charged under adult supervision.
- Rechargeable batteries are to be removed from the toy before being charged.
- Different types of batteries or new and used batteries are not to be mixed.
- Batteries are to be inserted with the correct polarity(+ and -).
- Remove the exhausted battery in time.
- The power supply terminal cannot be short circuited.
- Do not connect the wire to a mains outlet.
- The product is not to be connected to more than the recommended number of power supplies.
- Check each part before assembly. If the part is damaged, fix it well before assembly.
- Please keep the product away from substances flammable and humid environments to prevent damage.
- The instruction must be retained since it contains important information.

## ⚠ ATTENTION

- The product is suitable for children age 14+. Children should be accompanied by adults while assembling.
- Some small parts and electronic components are included, and children must assemble under the guidance and supervision of adults in case of swallowing by mistake or choking.
- Some auxiliary tools are required to assemble. Please choose reasonably to avoid injury.
- Please read the instructions carefully before assembly to confirm that the parts are not damaged or missing.
- Please carefully cut the parts and make sure they are firmly pasted when using glue.
- Please install the electronic components correctly and test whether the circuit is normal after completion.
- Please don't clean this product with chemical cleaners: alcohol, ammonia water, glass cleaner, etc.
- Please clean the product with clean soft cloth, and sand the board burr lightly with sandpaper.
- Glue is a gift not for sale. If it becomes dry or excessive glue due to time or environmental problems, you can use your own glue to assemble.

★ Due to customs policy in international shipping, the batteries, glue or pigment may not be included. Please prepare them yourself.

Equipped with 2 controllable lights



## Parts list

Bag No.1

Name	Lamp-shade	Lens	Screw-driver	Tape	Angle-iron
No.	P1	P2	P3	P4	P5
Picture					
Quantity	1	1	1	2	6

Bag No.2

Fence 1	Fence 2	Fence 3
P6	P7	P8
Picture		
Quantity	1	1

Bag No.3

Name	Battery box	Short warm light	Long warm light
No.	P9	P10	P11
Picture			
Quantity	1	1	1

Bag No.4

Screw
P12

14

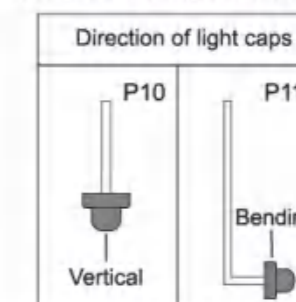
Name	Mirror sheet	Transparent water ripple sheet	White latex	PET	Corrugated paper
No.	P13	P14	P15	P16	P17
Picture					
Quantity	1	1	1	1	1

## Q&A

- Q1: What if there are burrs on the edges of parts?  
A1: In order to ensure your safety and its installation accuracy. Please remove the parts first. Then use the included sandpaper to polish the edge burrs of the parts.
- Q2: How to deal with loose parts after repeated disassembly?  
A2: Apply some glue on joints to fix the parts.
- Q3: What need to be considered when assembling the PET and mirror sheet?  
A3: Remove the films of PET and mirror sheet before assembling. Then apply some glue on them and press 5 to 10 seconds.
- Q4: What need to be considered when connecting the battery box with the light?  
A4: Twist the same color wires together. If you connect red with black, it will short out after powering on. The light cannot work properly.
- Q5: What if the light cannot work after connecting the battery box with the lights?  
A5: 1. Firstly, check if wires connection is wrong (connect the same color wires together). Secondly, check if you have loaded the batteries properly and if the switch is turned on.  
2. Turn off the battery box switch. Then tear off the insulation tape. Check if copper wires are broken and re-connect the wires.
- Q6: How to use the touch light?  
A6: After assembly, you can touch the switch of the front board lightly and all light beads will be on.

## Instructions

1. The light wires diagram of P10 and P11

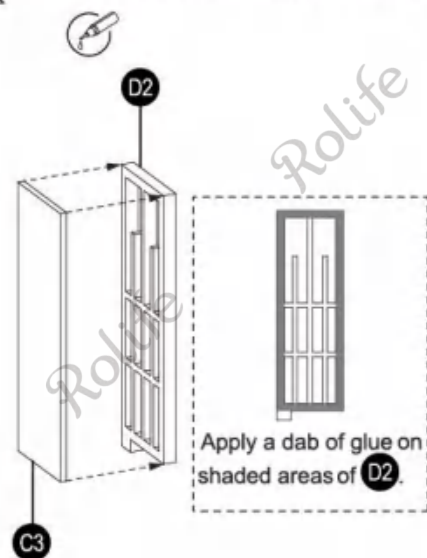


2. Signs illustration

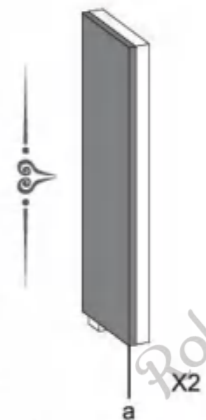
- Step 1 The printed side
  - Step 2 The blank side
  - Step 3 Notice
- Apply a dab of glue here and press 5s

1

Please read Q&amp;A in the previous page before assembling.

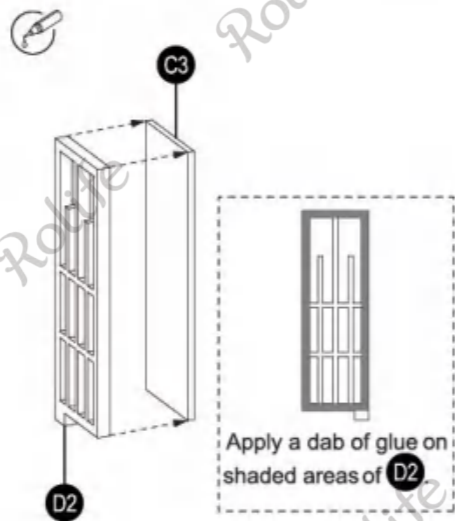


Apply a dab of glue on shaded areas of D2.



Assemble 2 sets of parts.

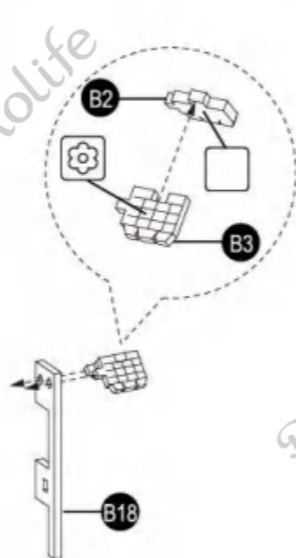
2



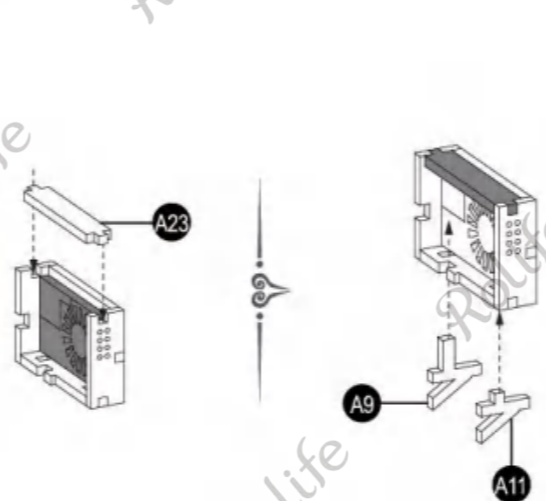
Apply a dab of glue on shaded areas of D2.

Assemble 2 sets of parts.

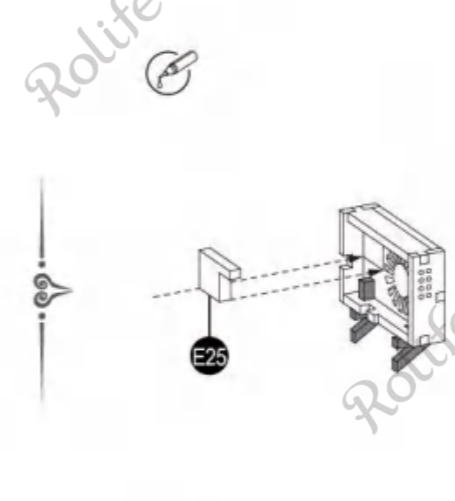
3



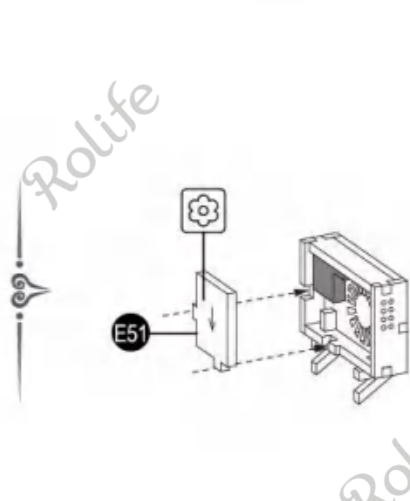
5



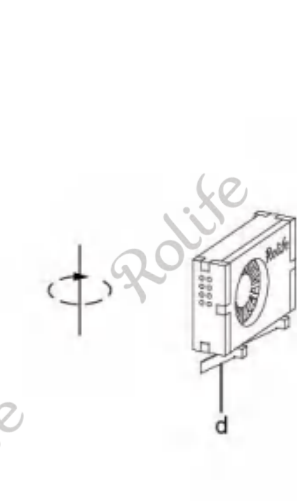
Spare parts for A11 &amp; A9.



Glue along reference lines.

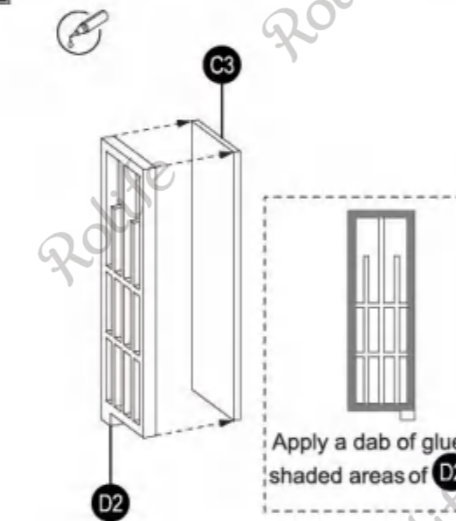


Glue along reference lines.

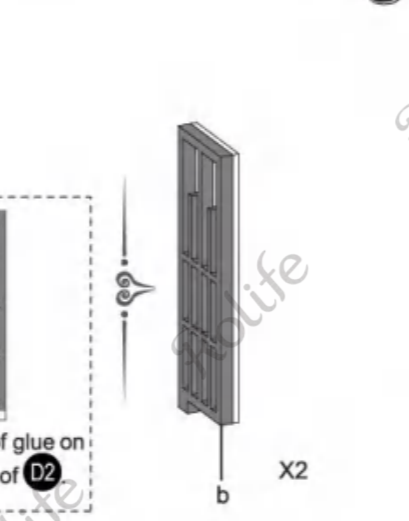


Glue along reference lines.

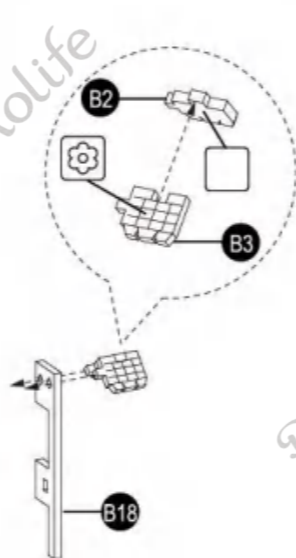
4



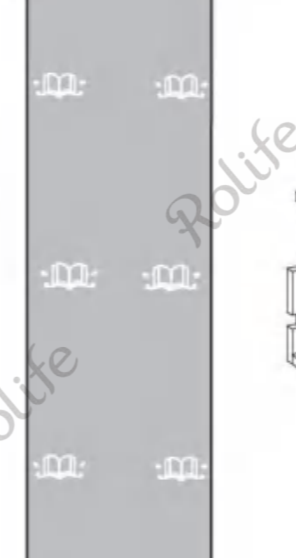
Glue as shown.



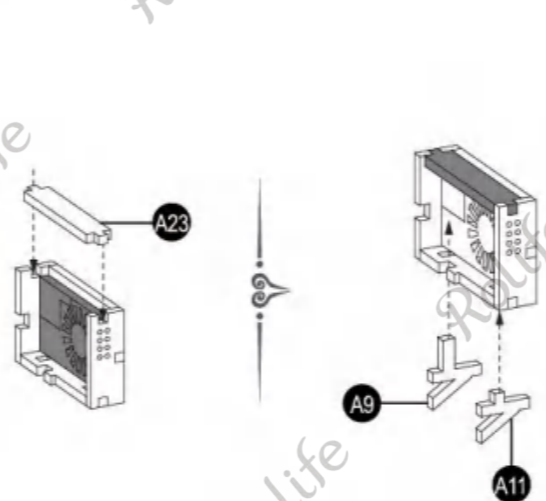
Glue as shown.



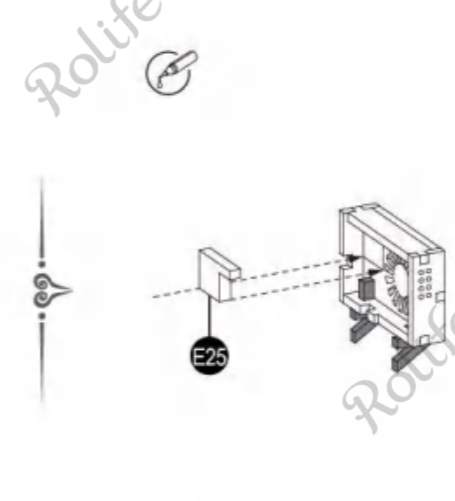
Glue as shown.



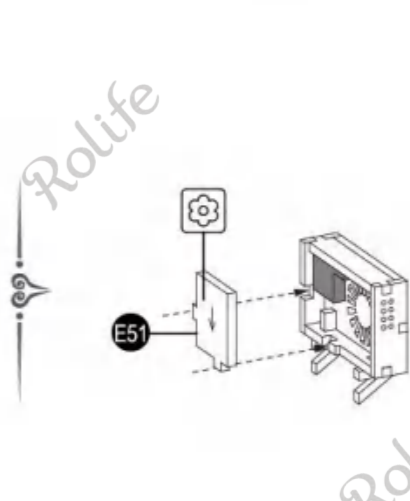
Glue as shown.



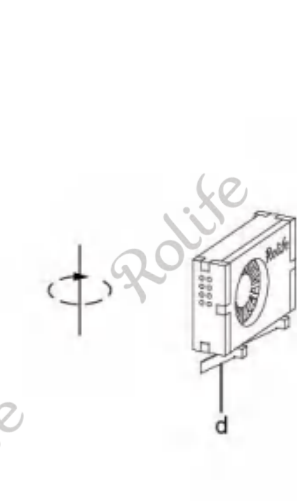
Glue as shown.



Glue as shown.



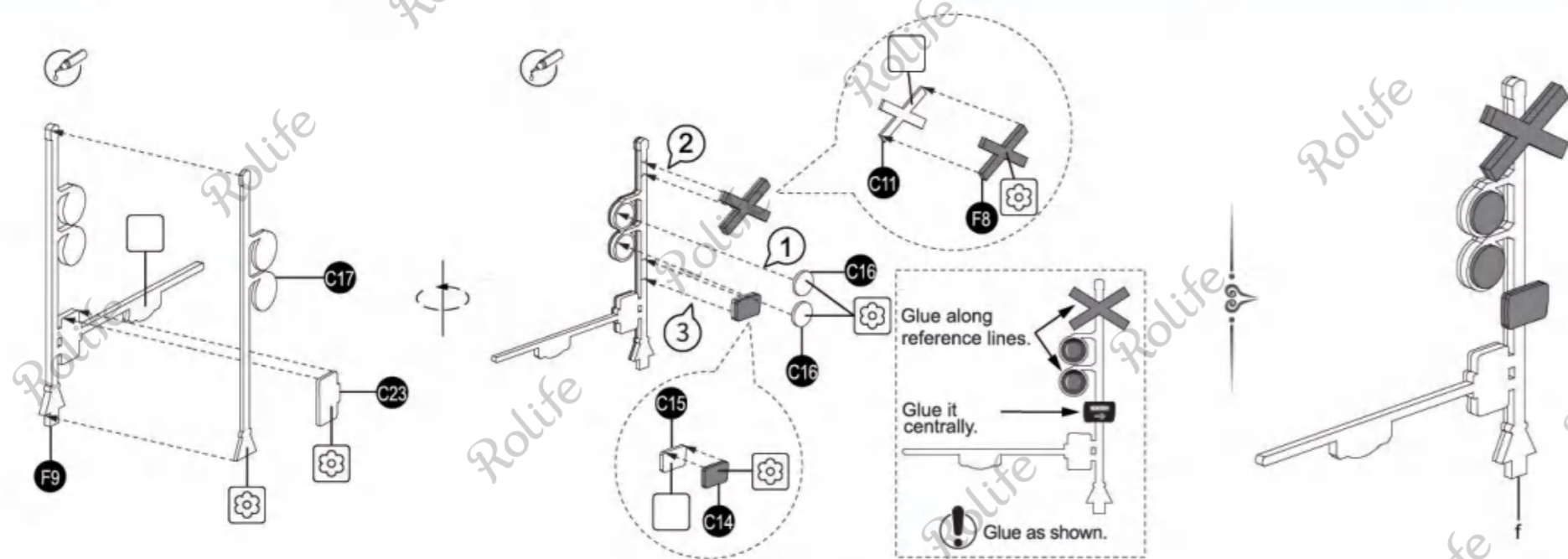
Glue as shown.



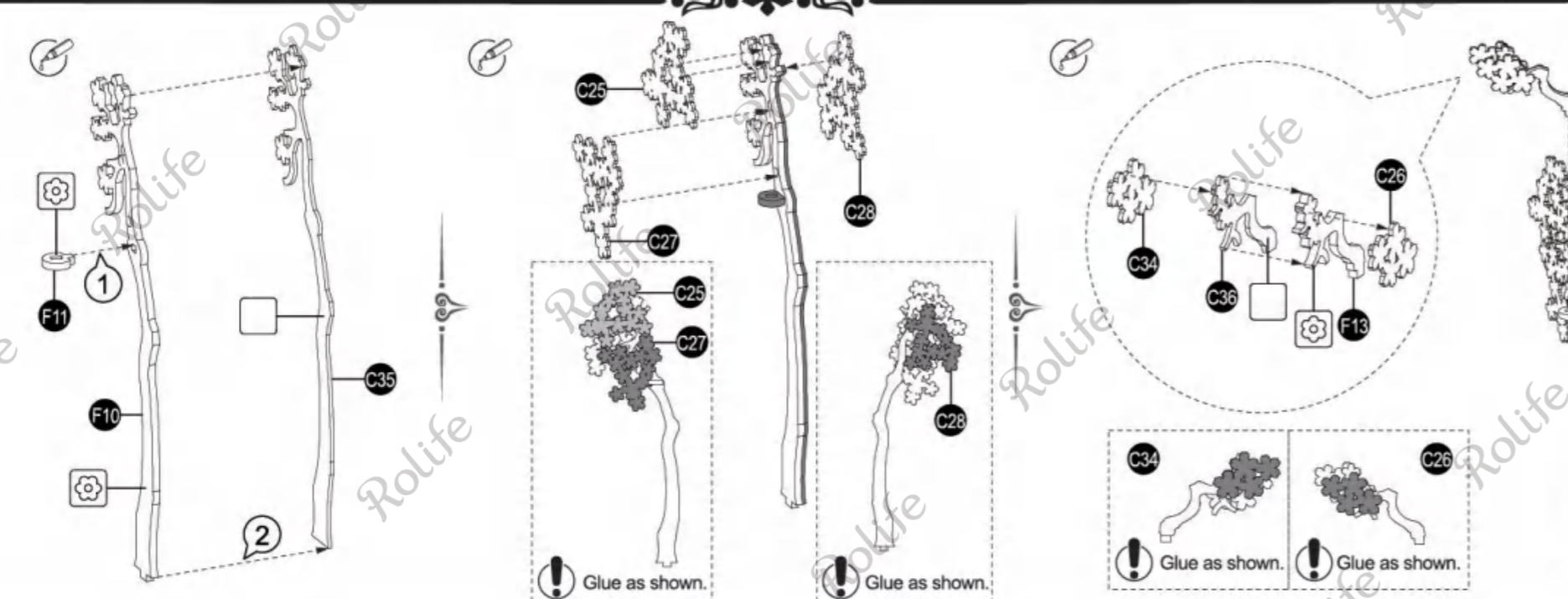
Glue as shown.

4

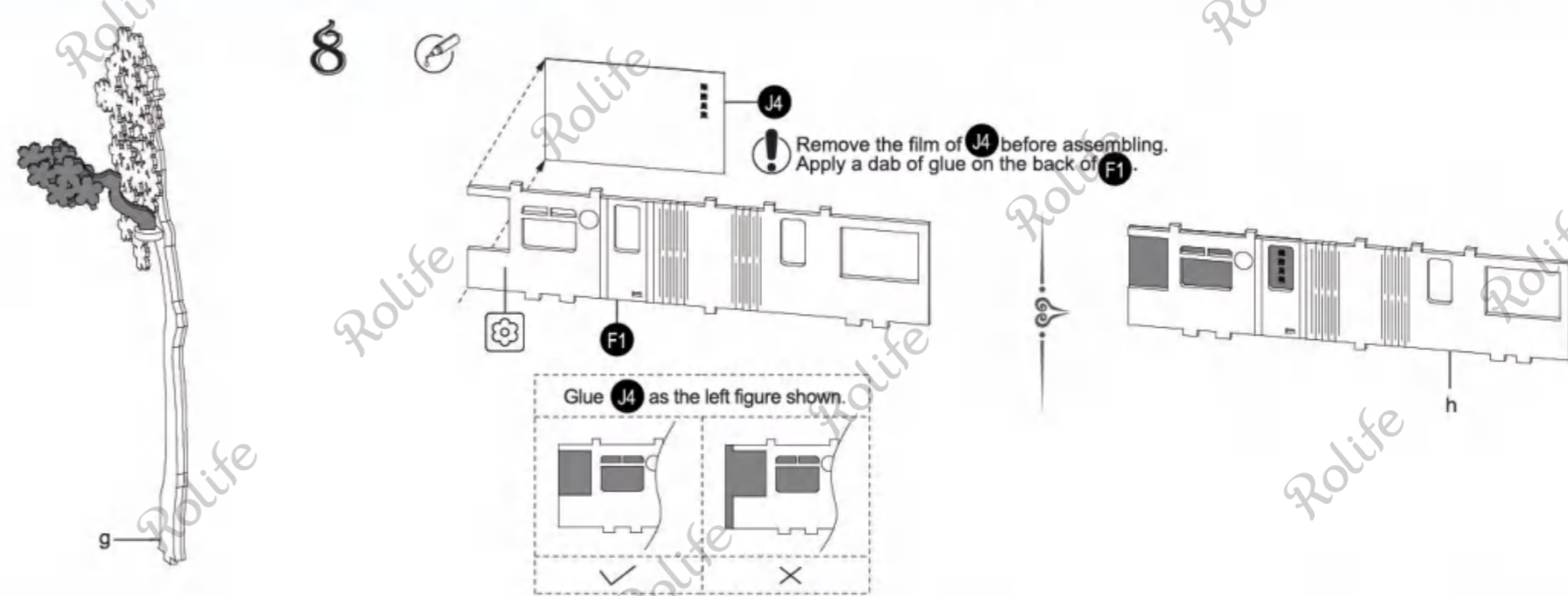
6



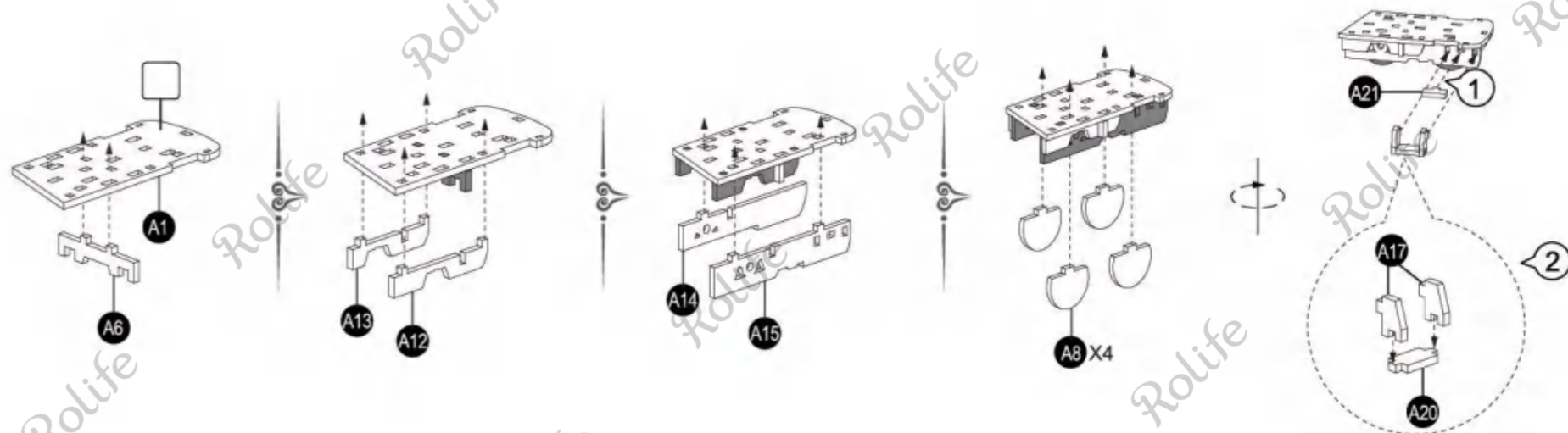
7



8

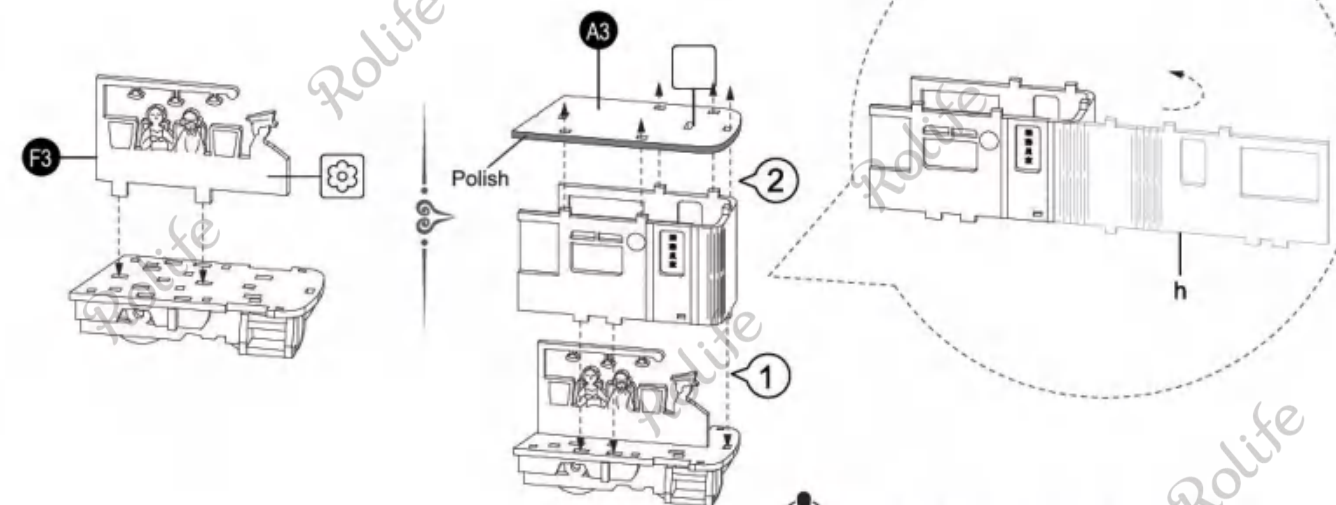


9

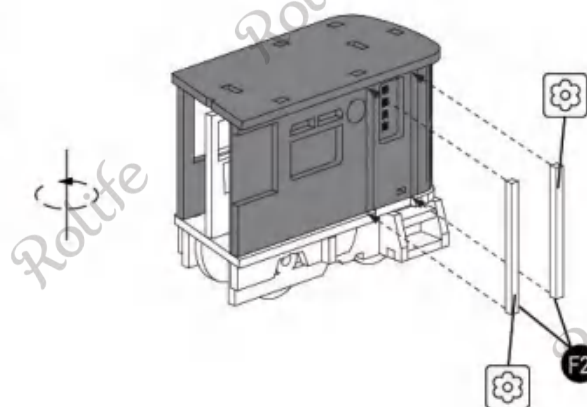


5

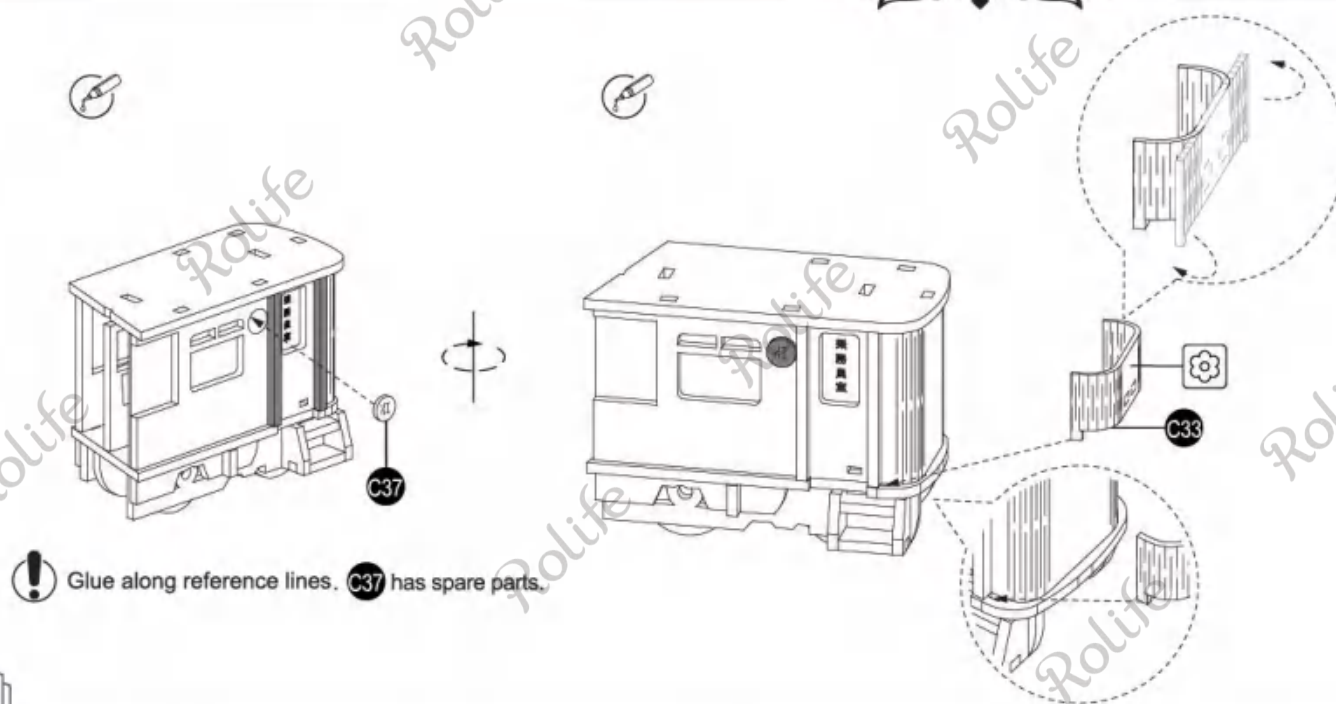
6



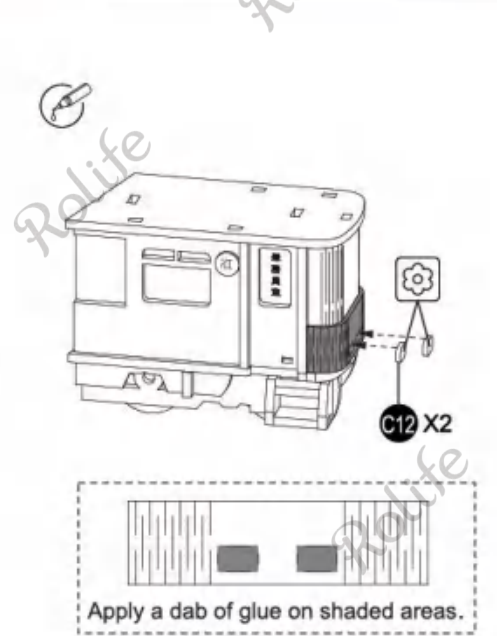
! Polish shaded areas with the sandpaper.



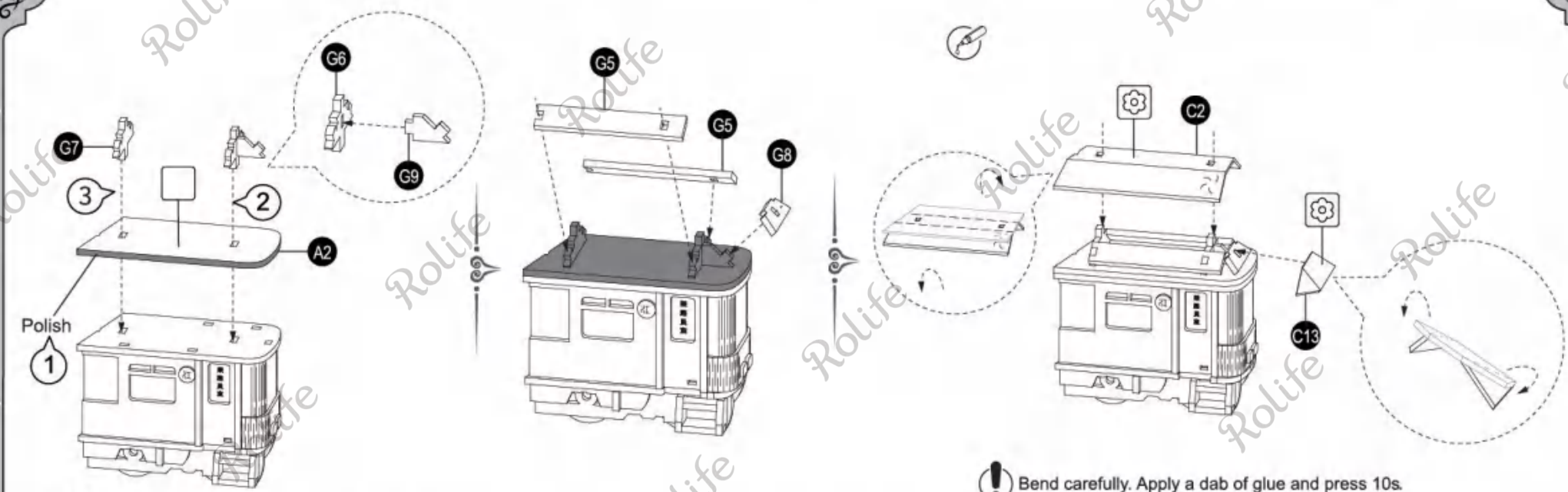
! Glue along reference lines. F2 has spare parts.



! Glue along reference lines. C37 has spare parts.

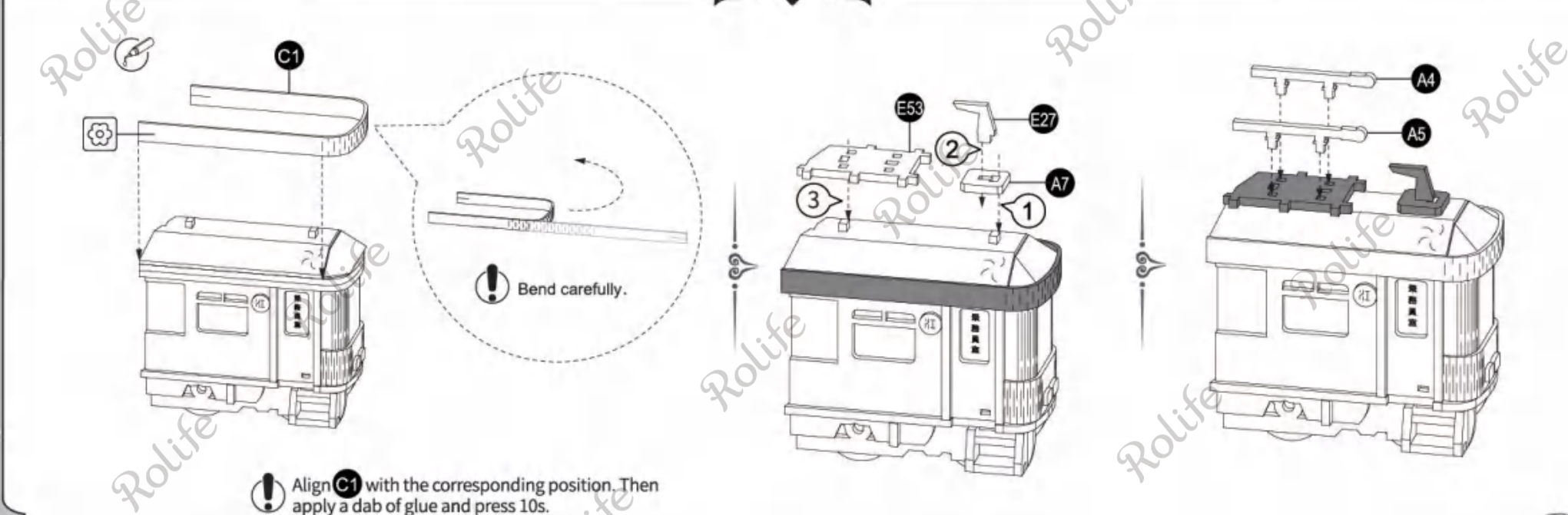


Apply a dab of glue on shaded areas.



! Sand shaded areas with the sandpaper.

! Bend carefully. Apply a dab of glue and press 10s.



! Align C1 with the corresponding position. Then apply a dab of glue and press 10s.

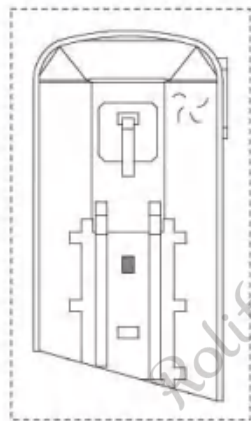
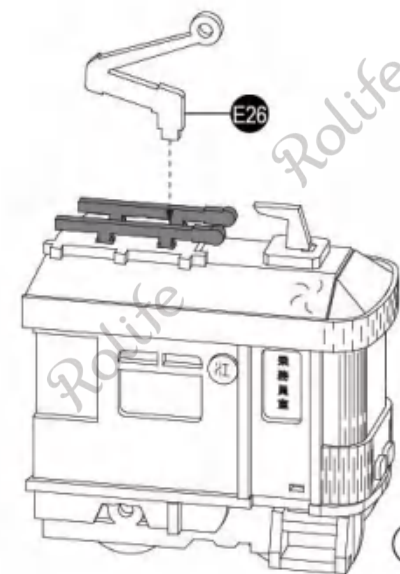
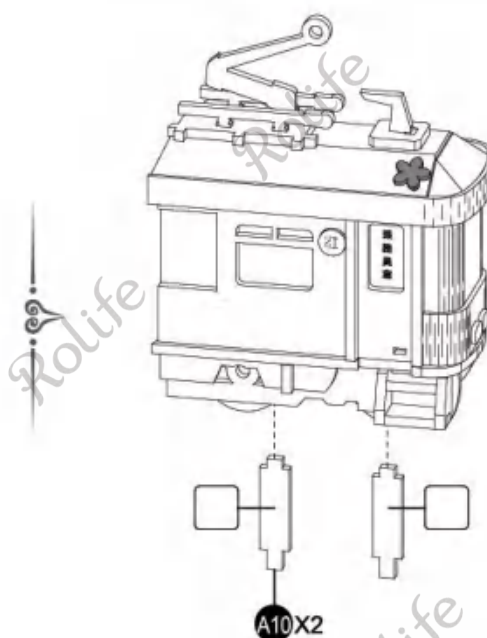
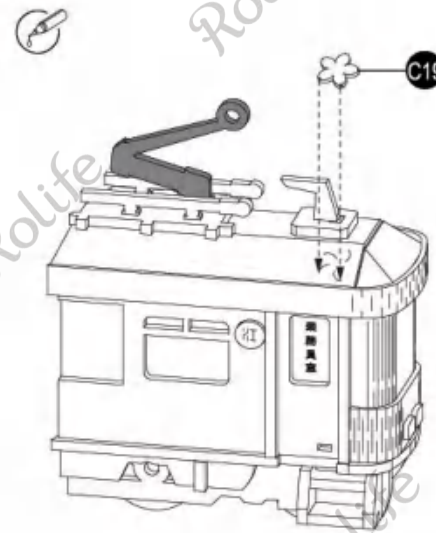
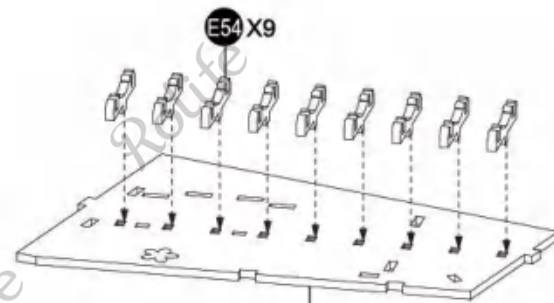
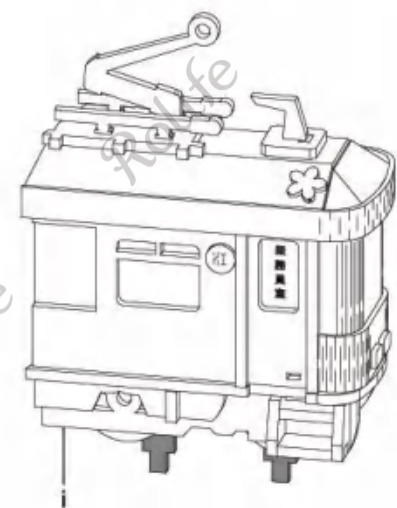


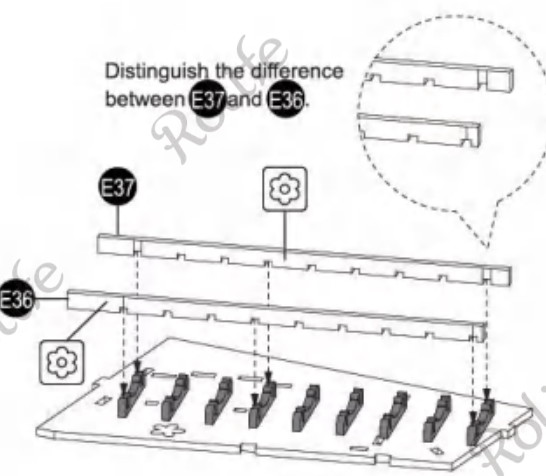
Diagram for hole positions



10



Spare parts for E54.



Distinguish the difference between E37 and E36.

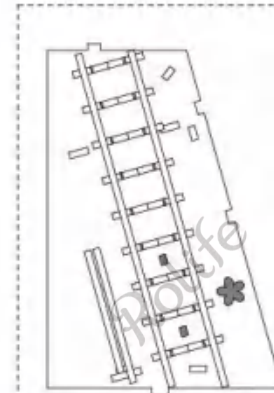
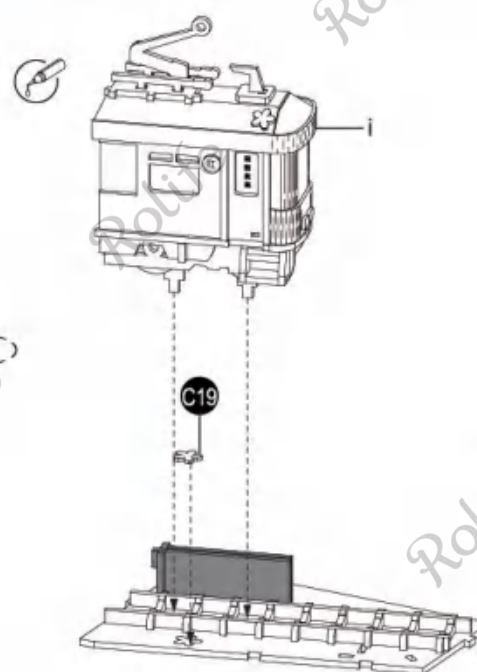
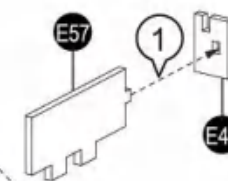
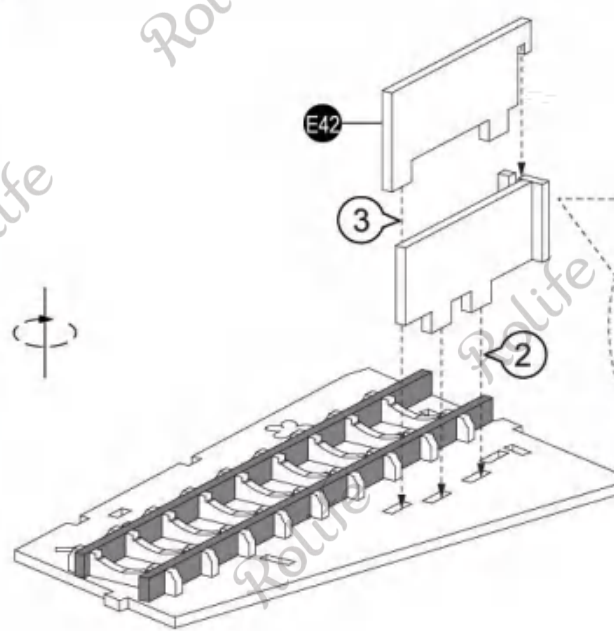
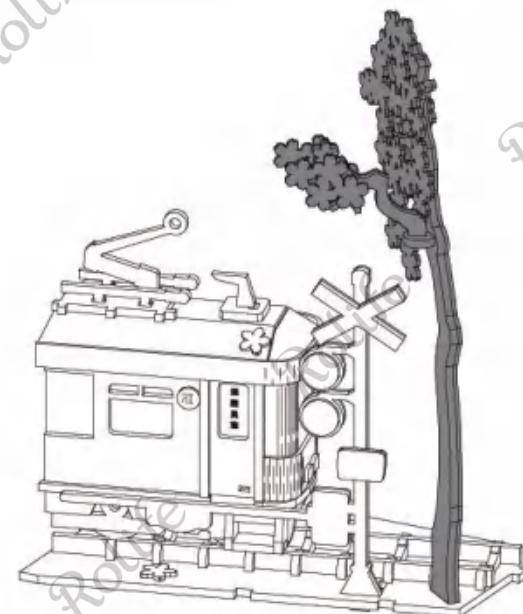
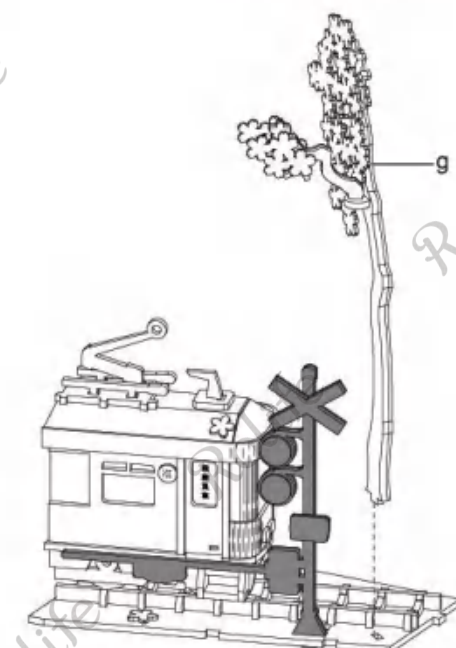
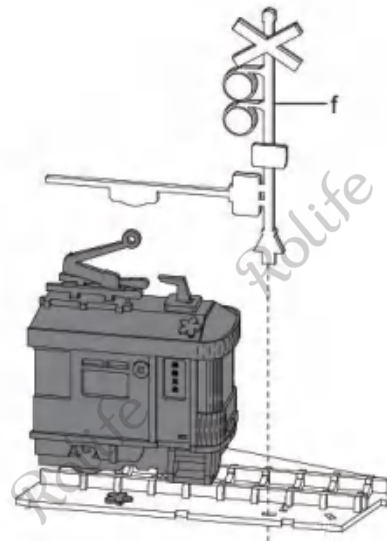
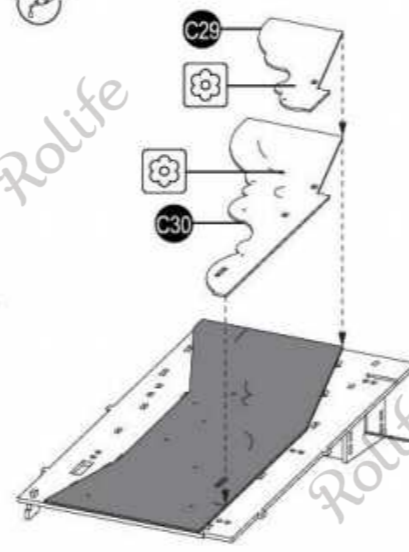
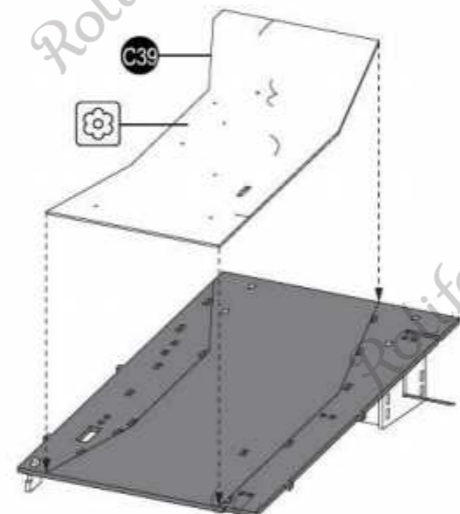
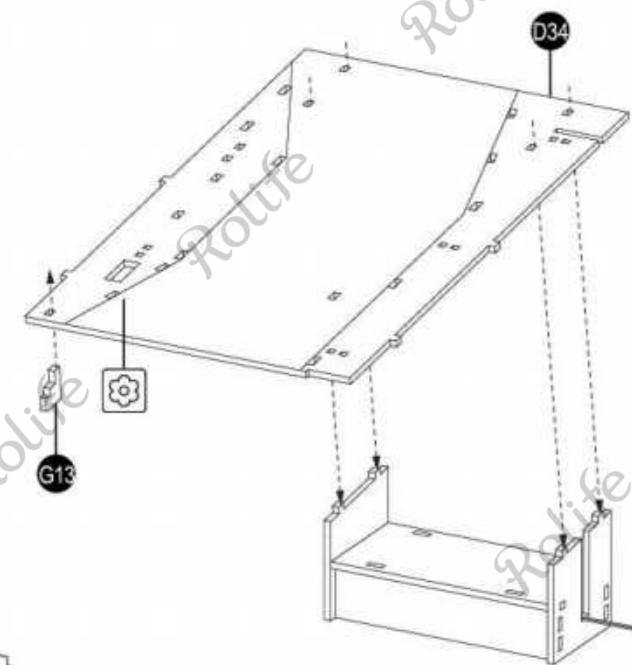
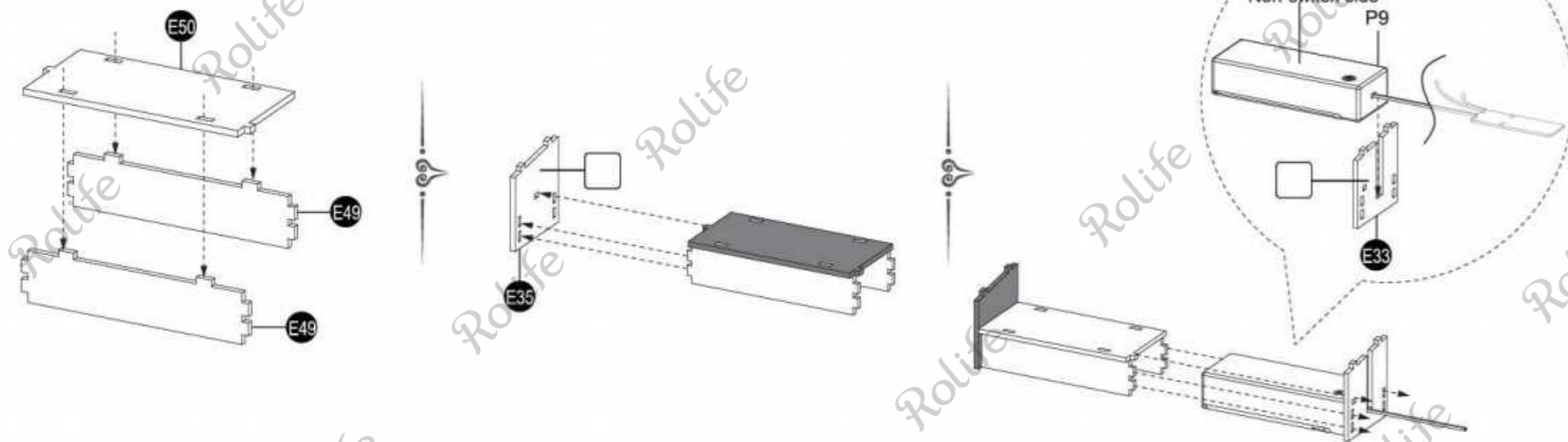


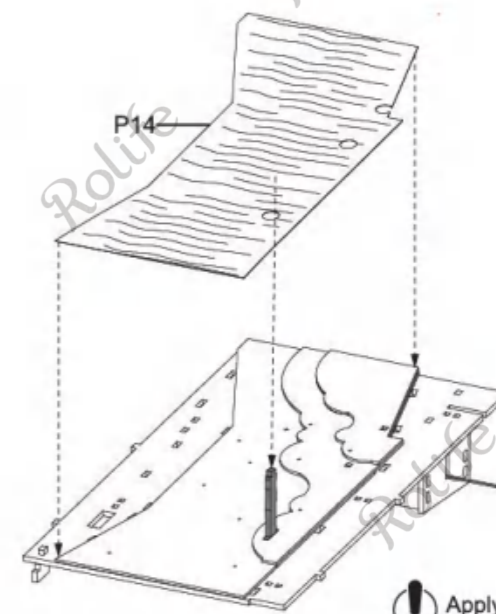
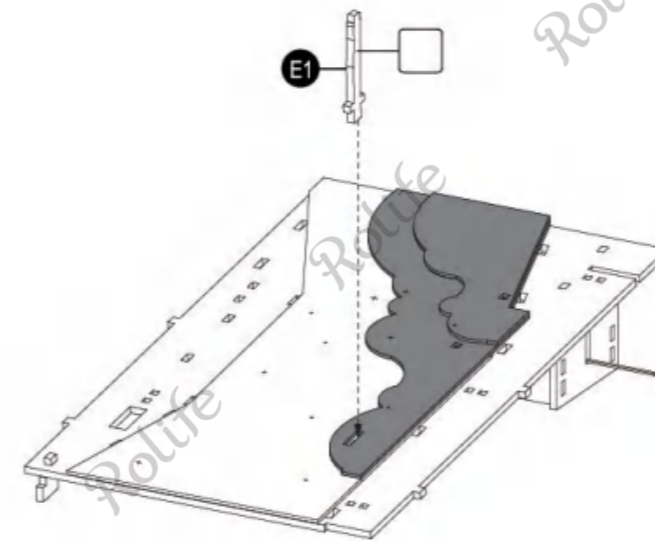
Diagram for hole positions



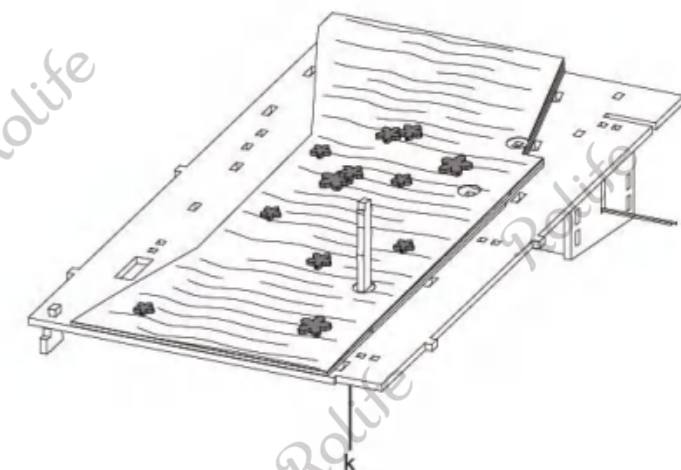
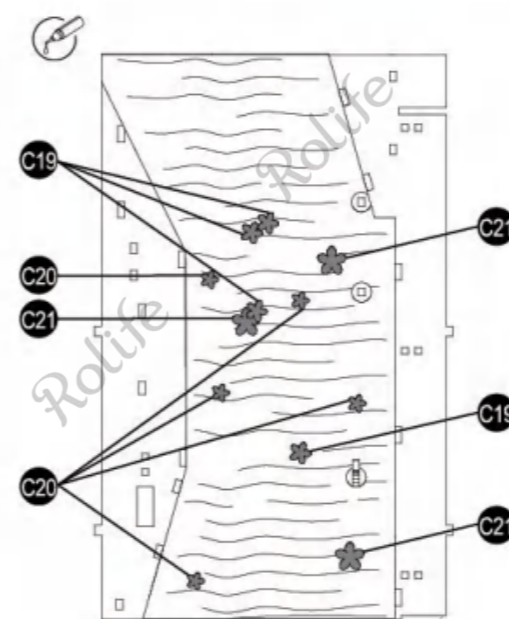
11



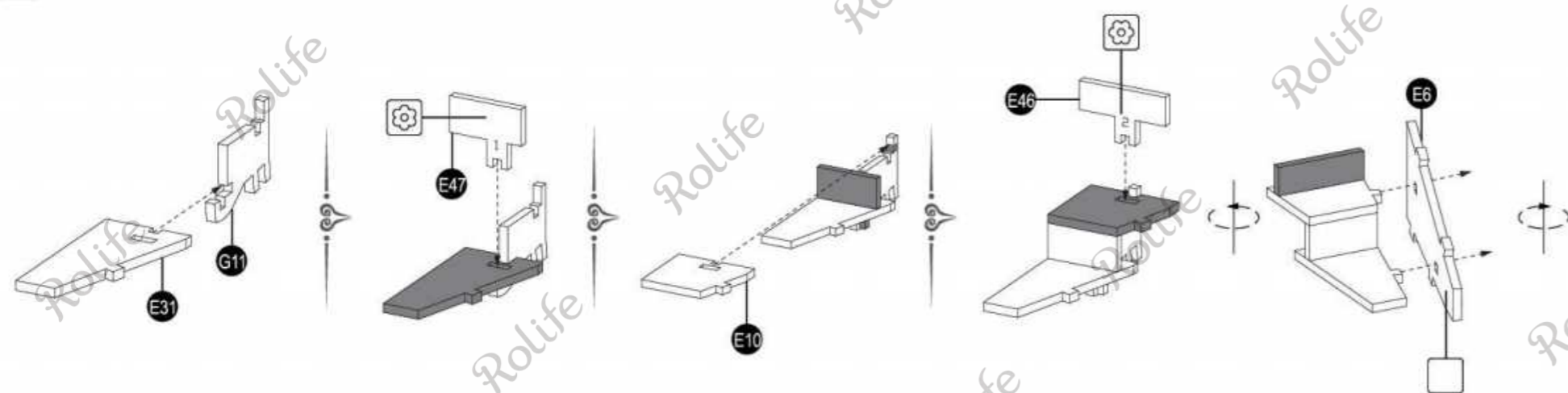
! Glue along reference lines.



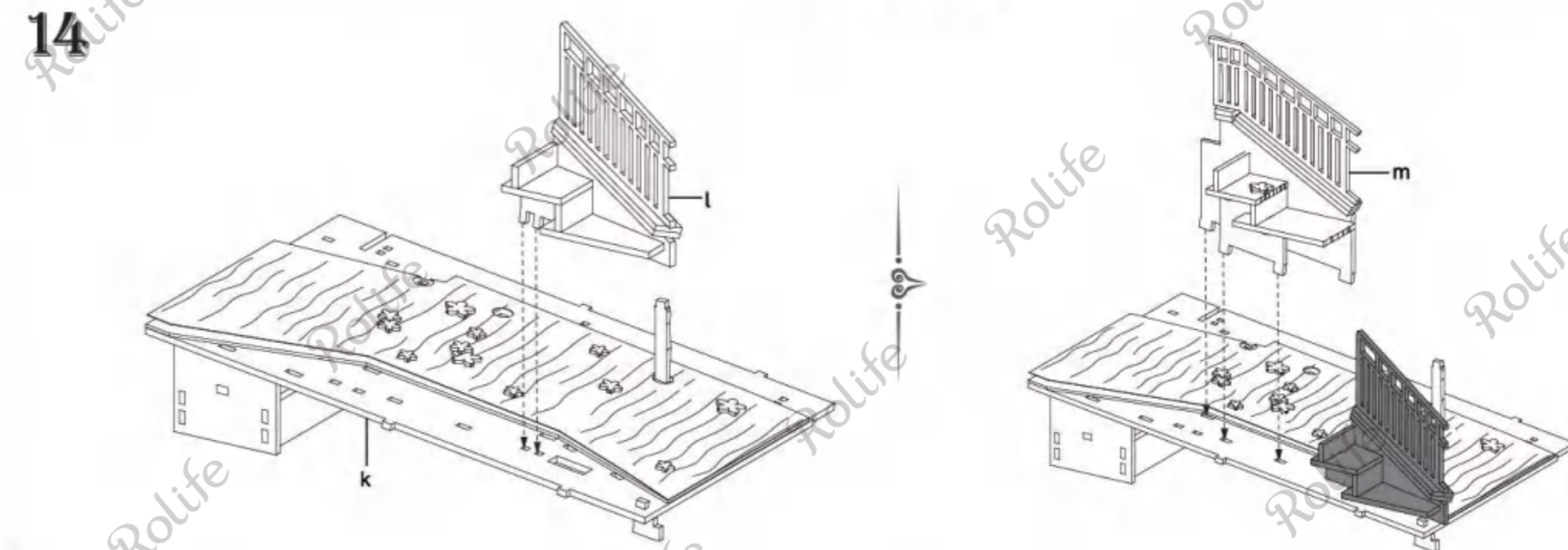
! Apply some glue on the edge.



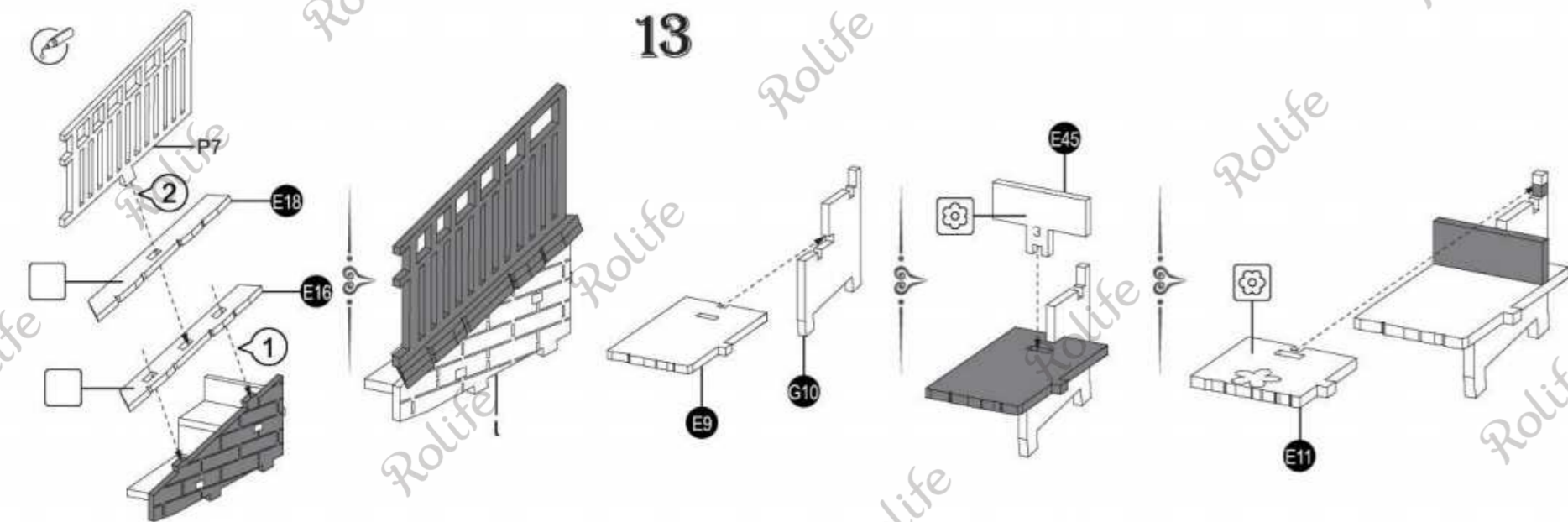
12



14



13

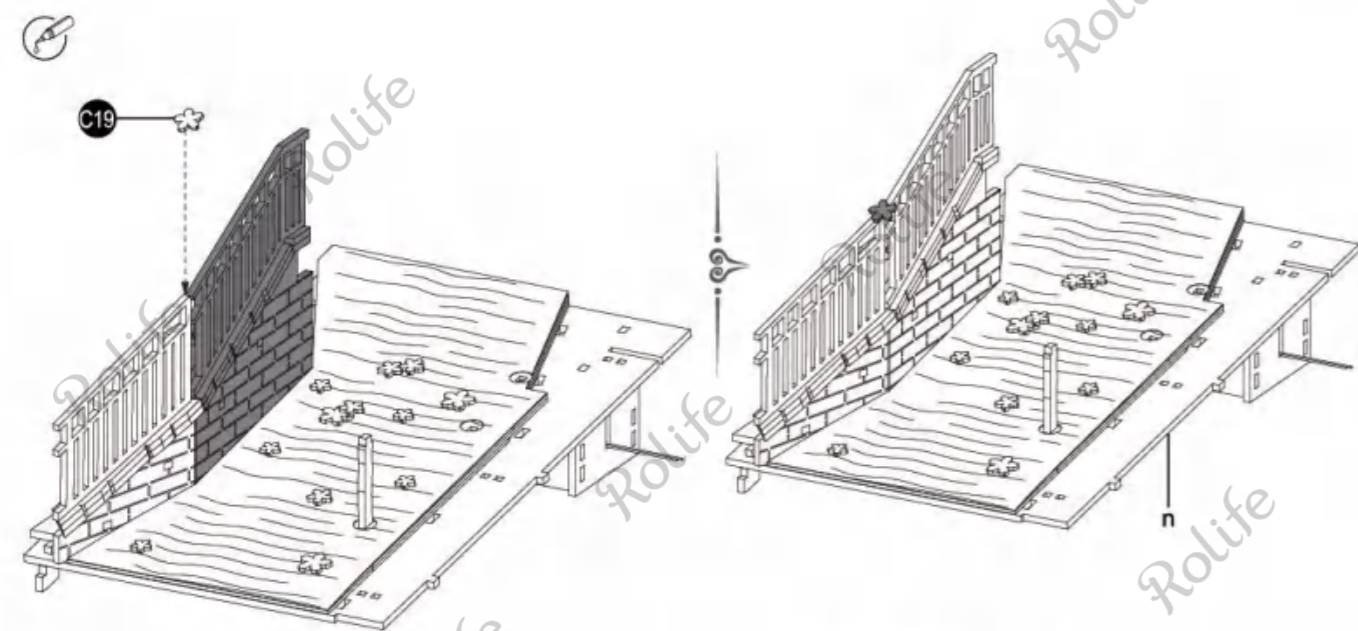


! Take out P8 in Bag No.2.

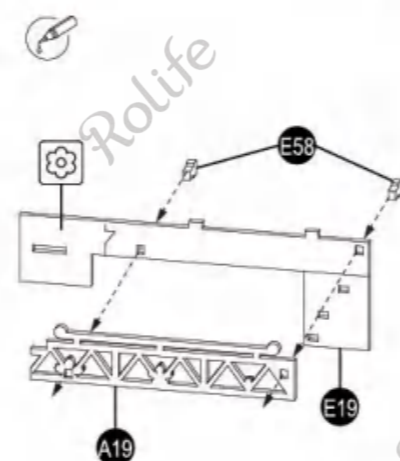
! Take out P7 in Bag No.2.

13

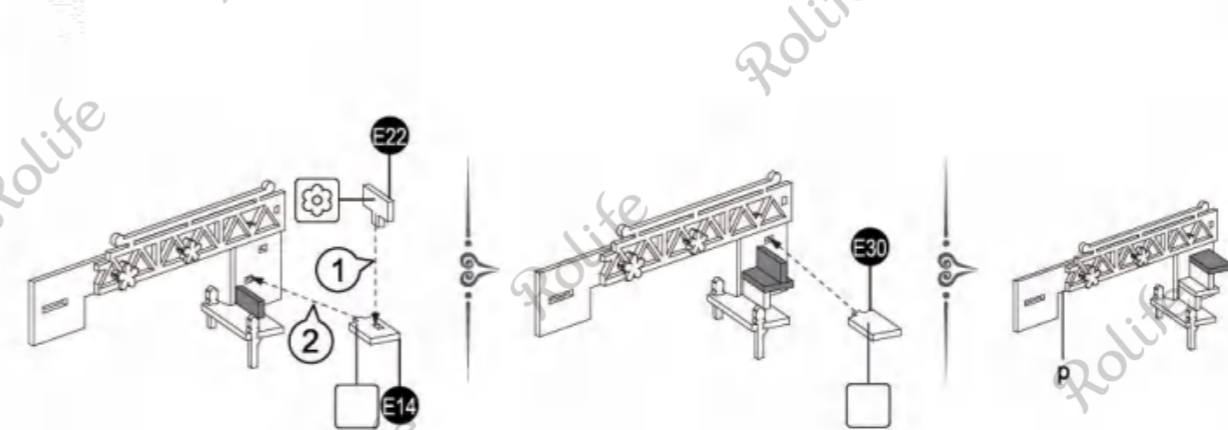
14



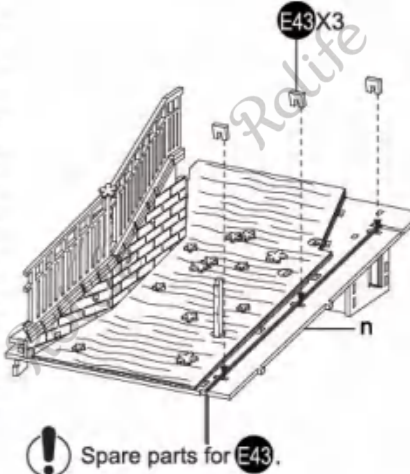
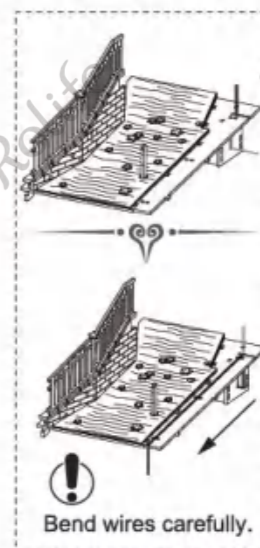
15



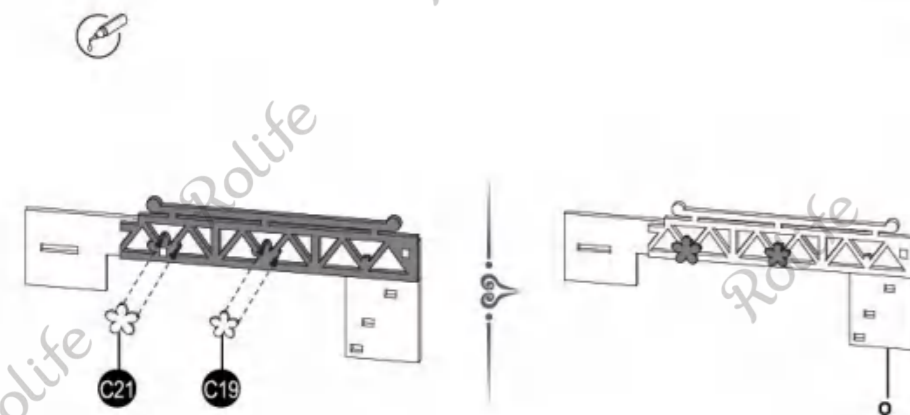
! Spare parts for E58.



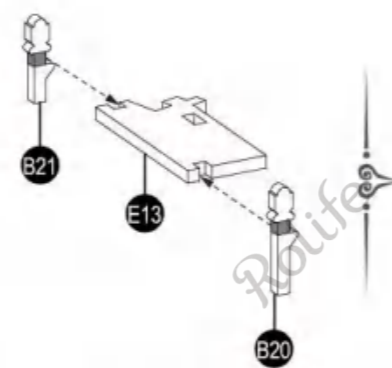
17



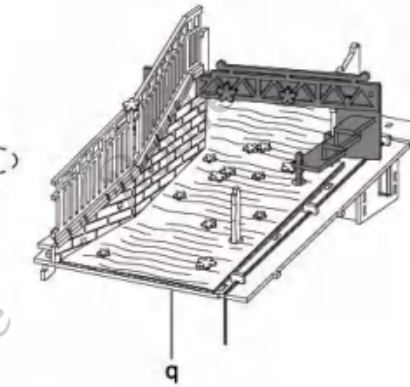
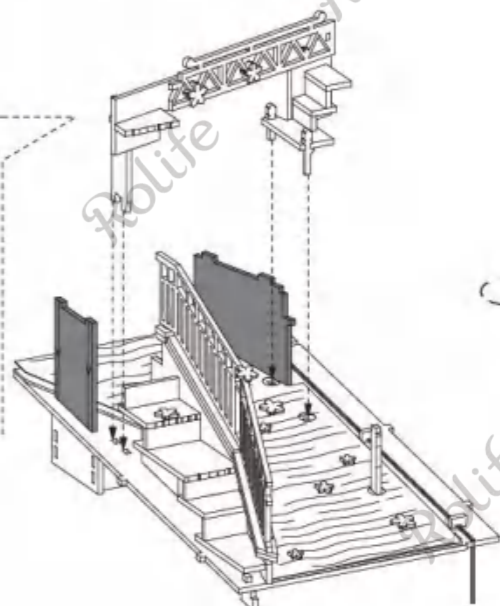
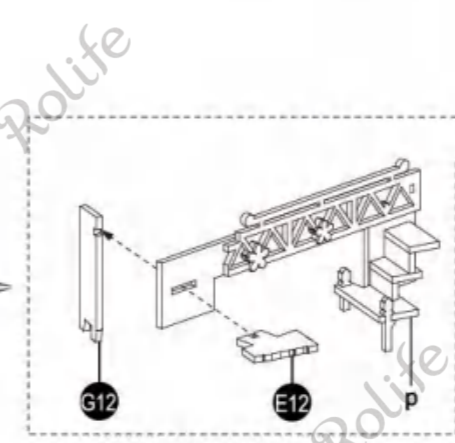
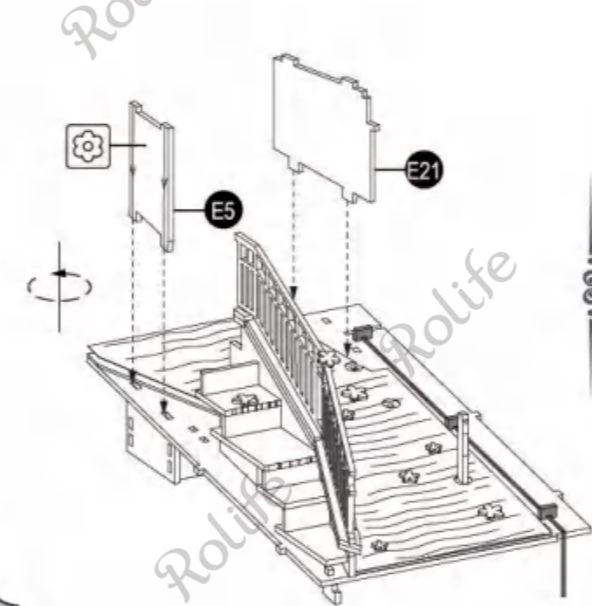
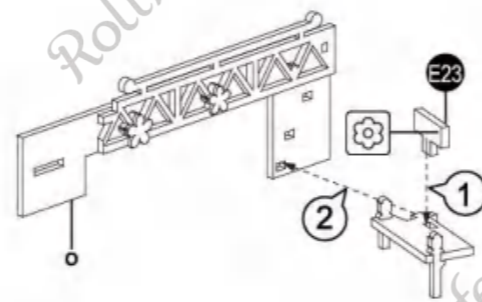
! Spare parts for E43.



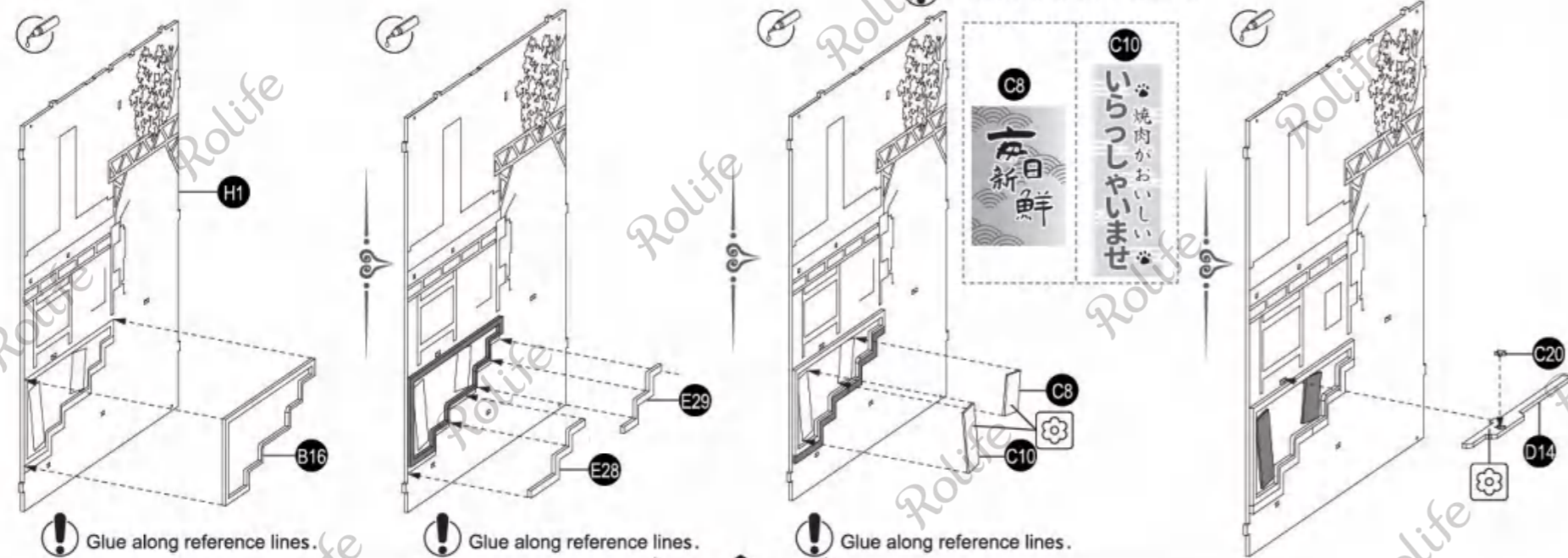
16



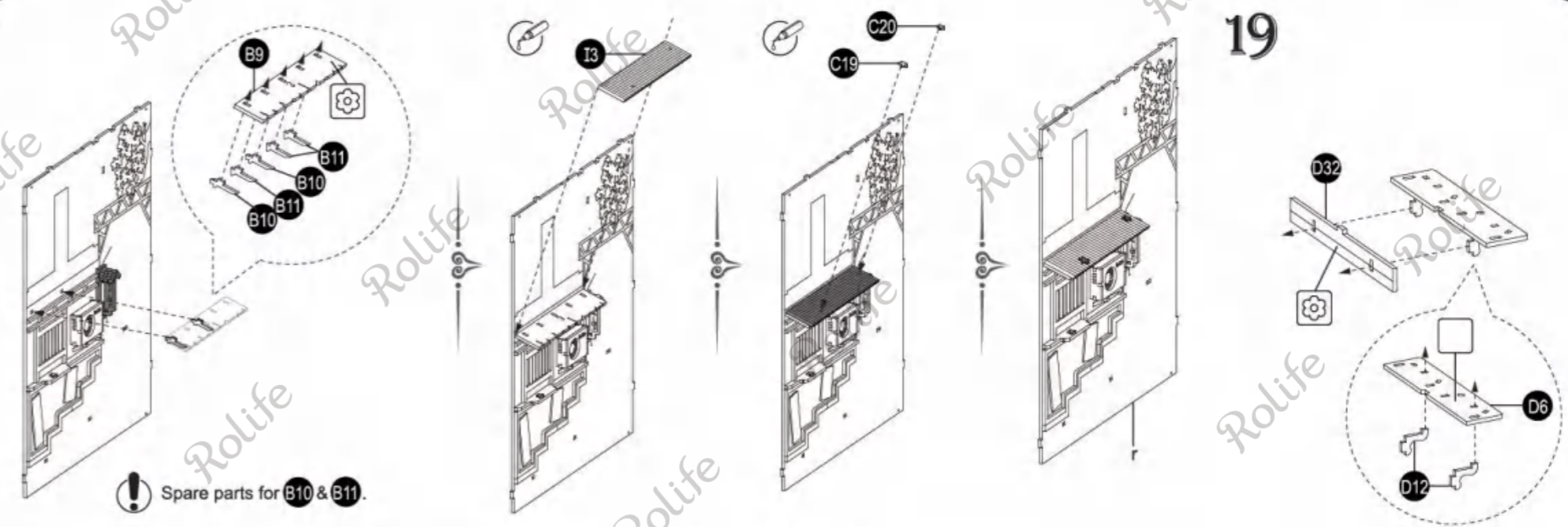
! Spare parts for B20 & B21.



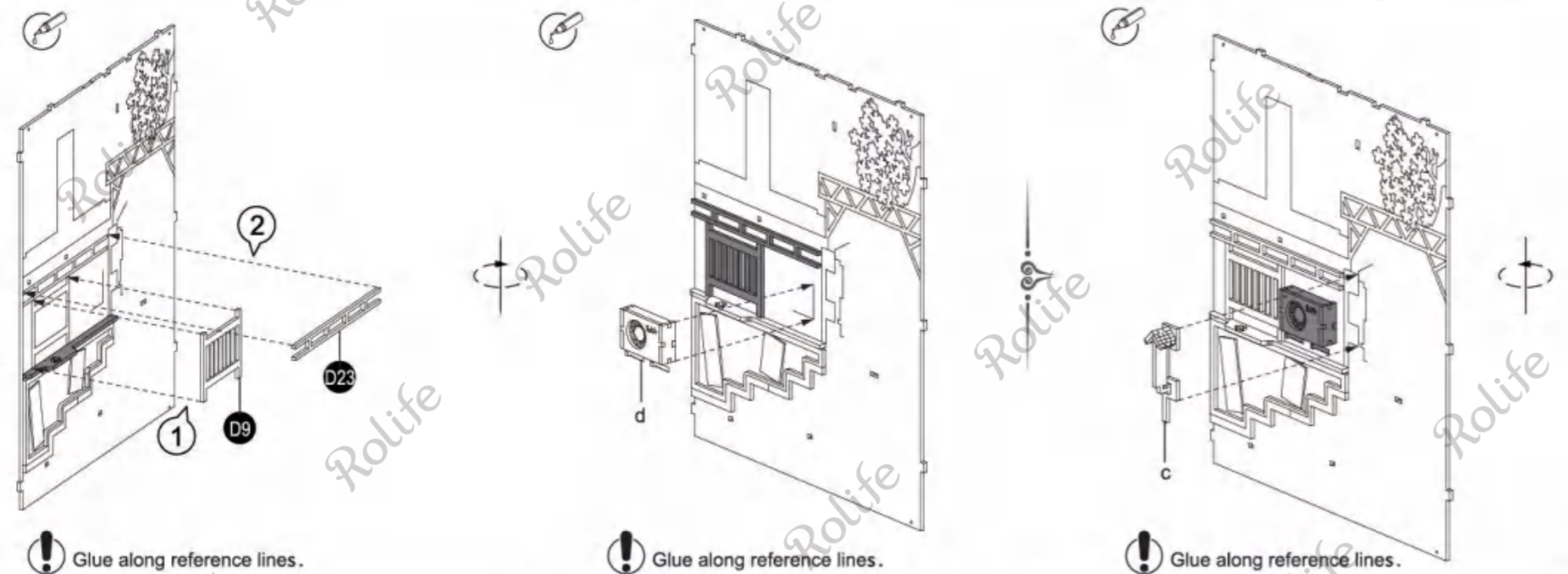
18



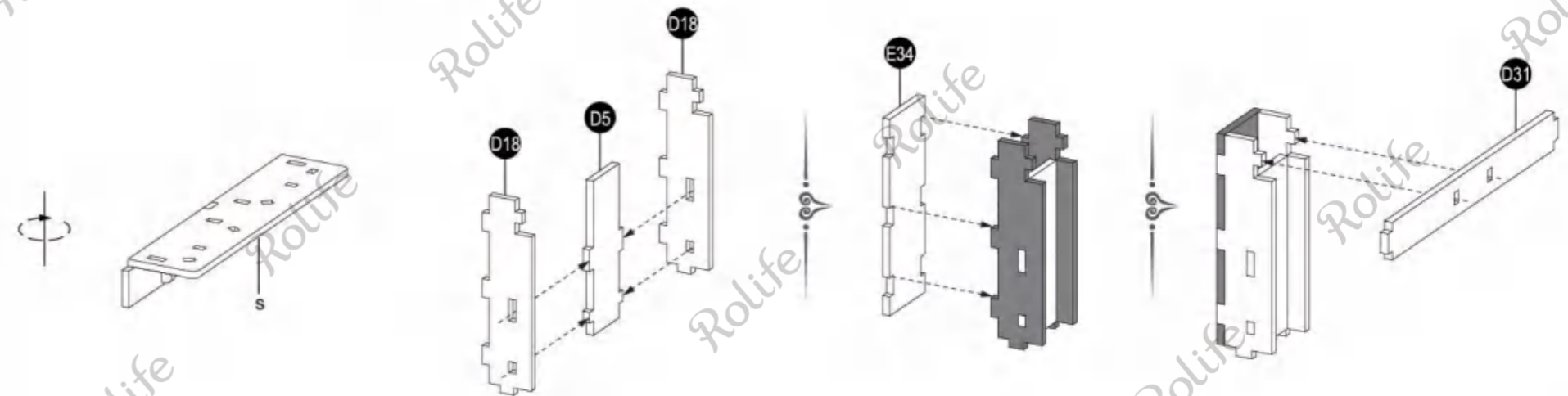
19



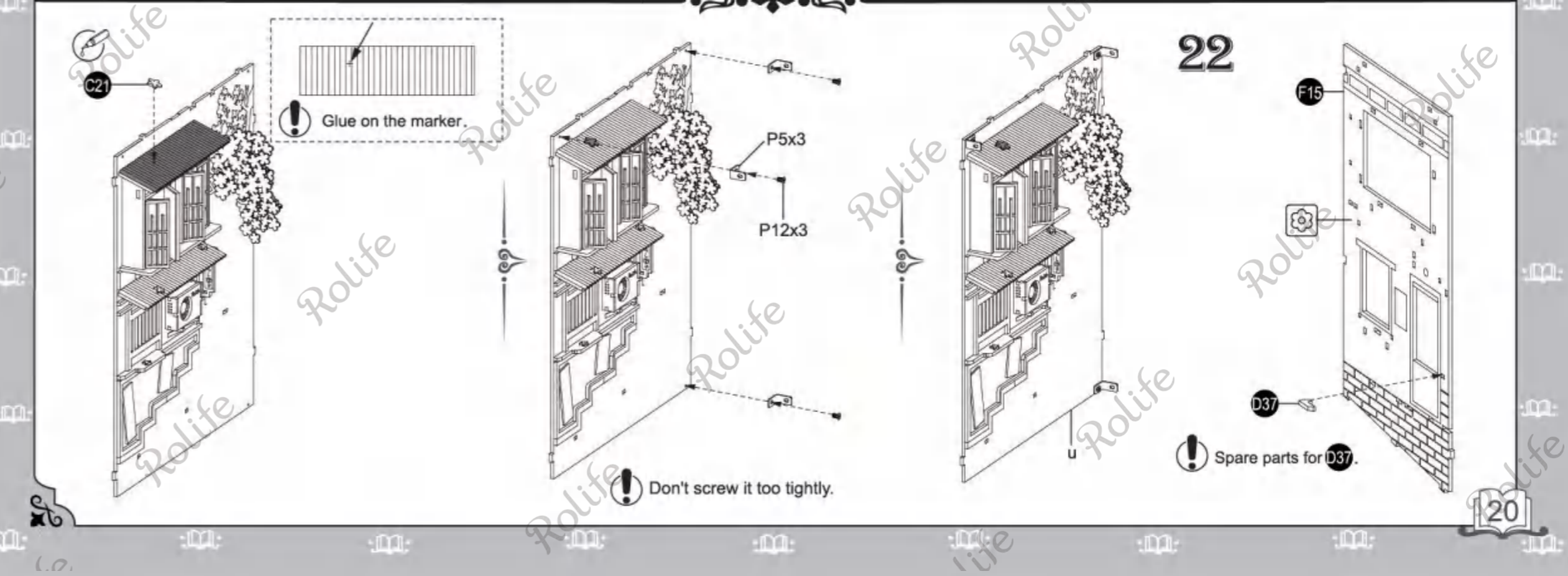
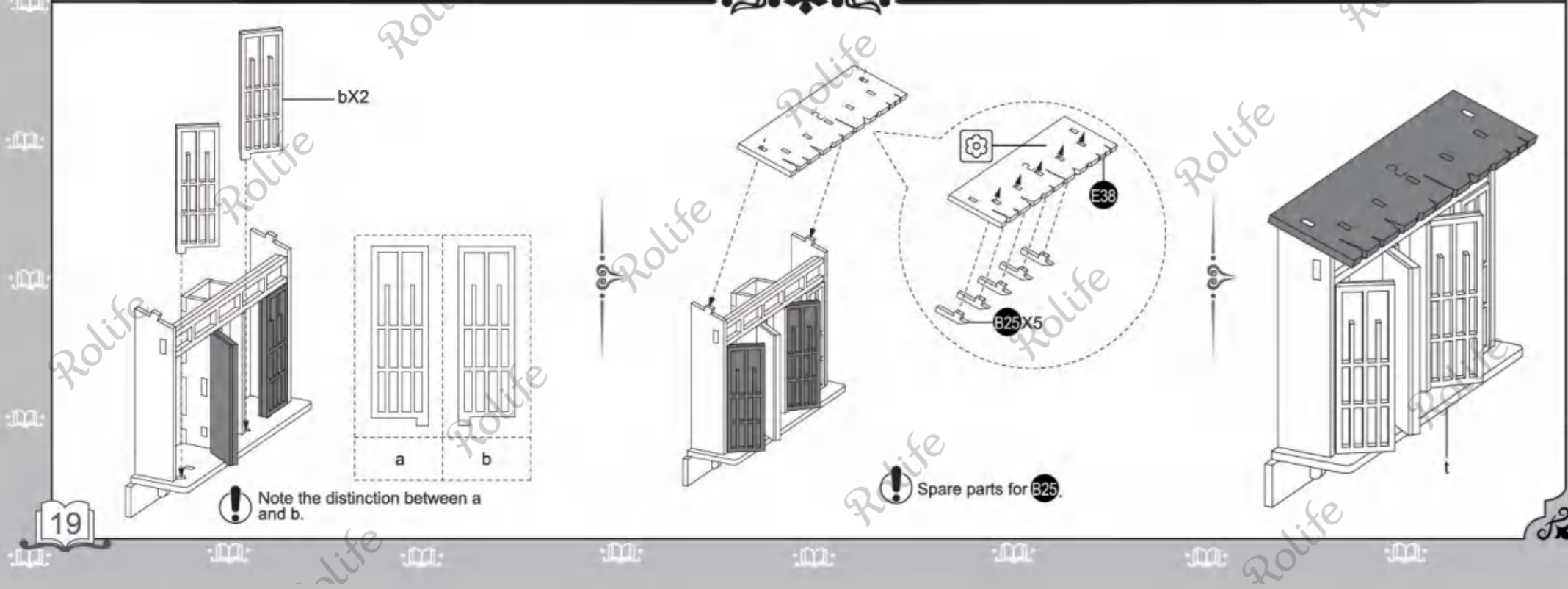
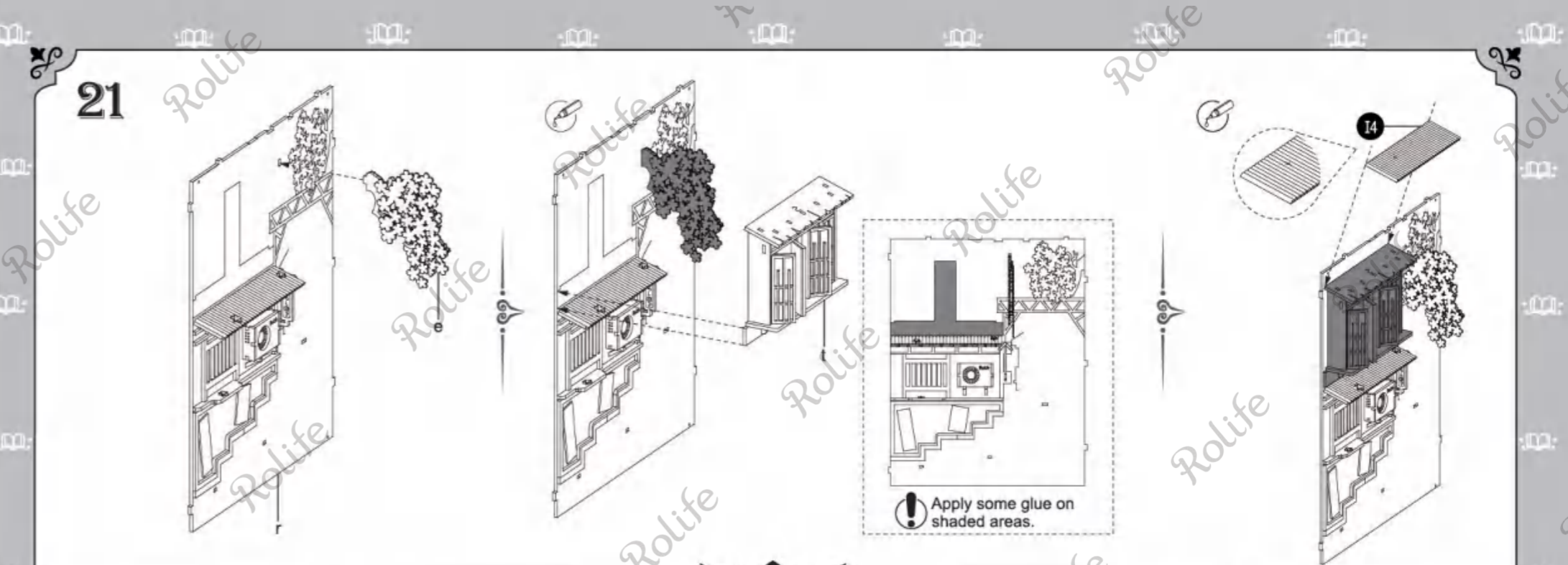
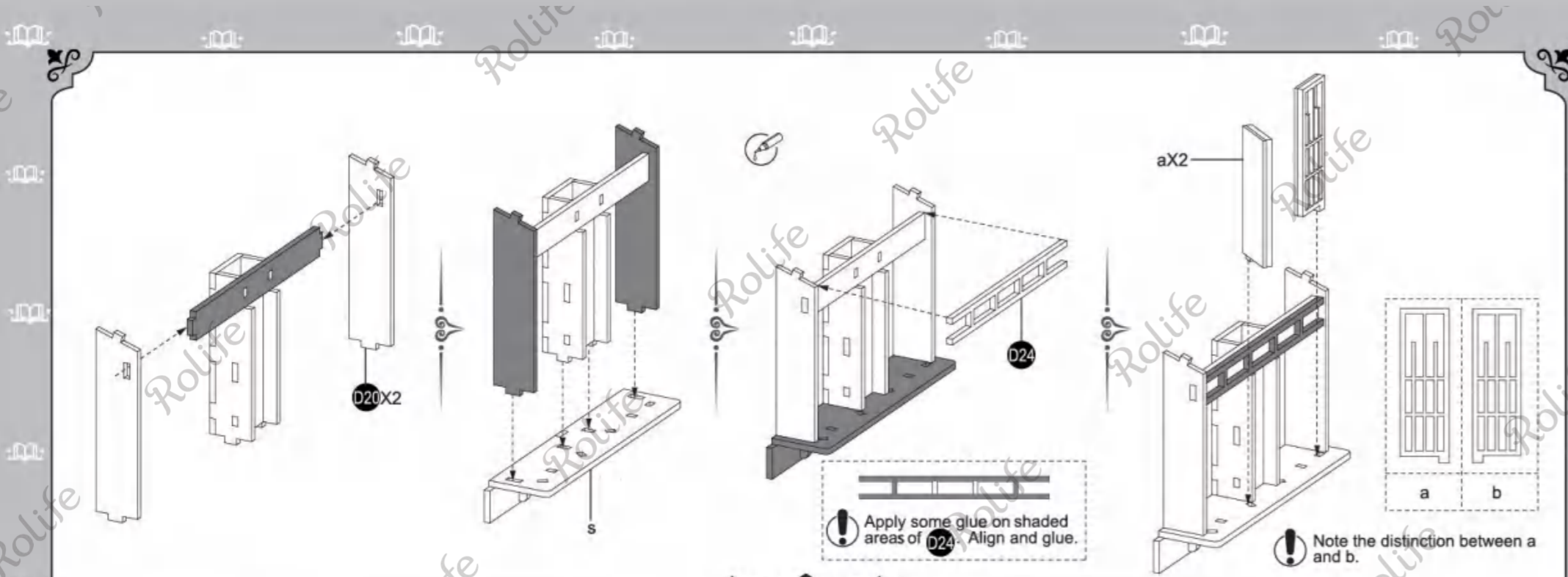
17

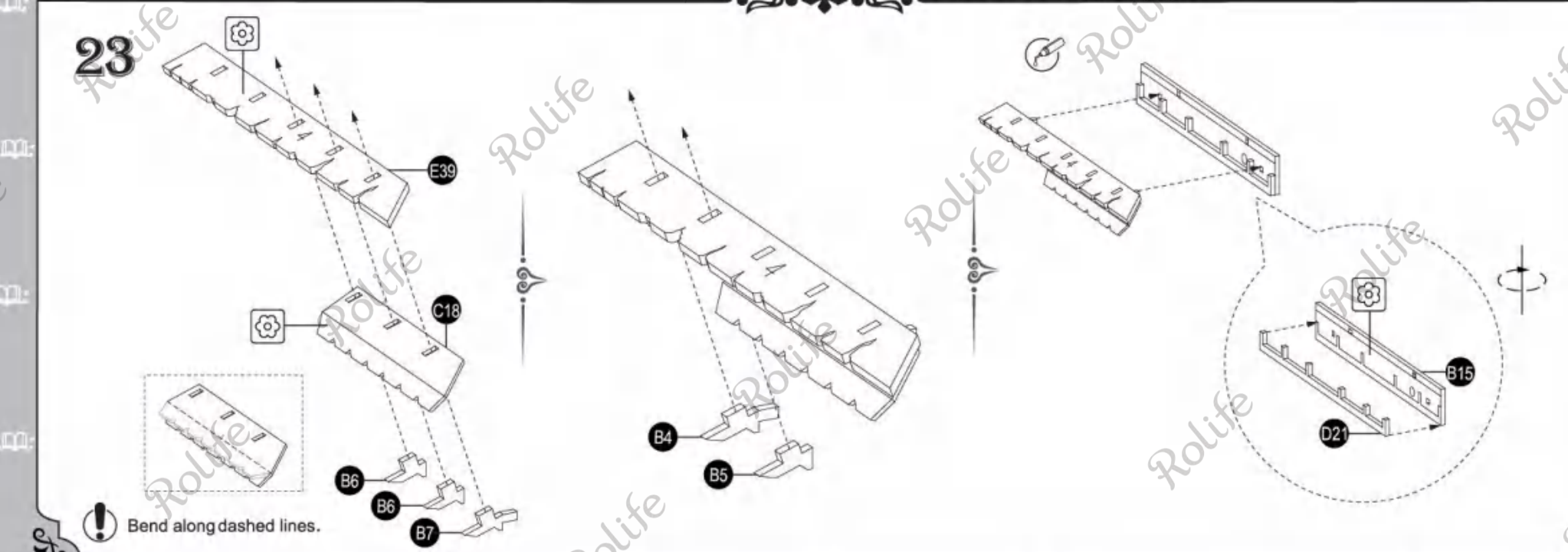
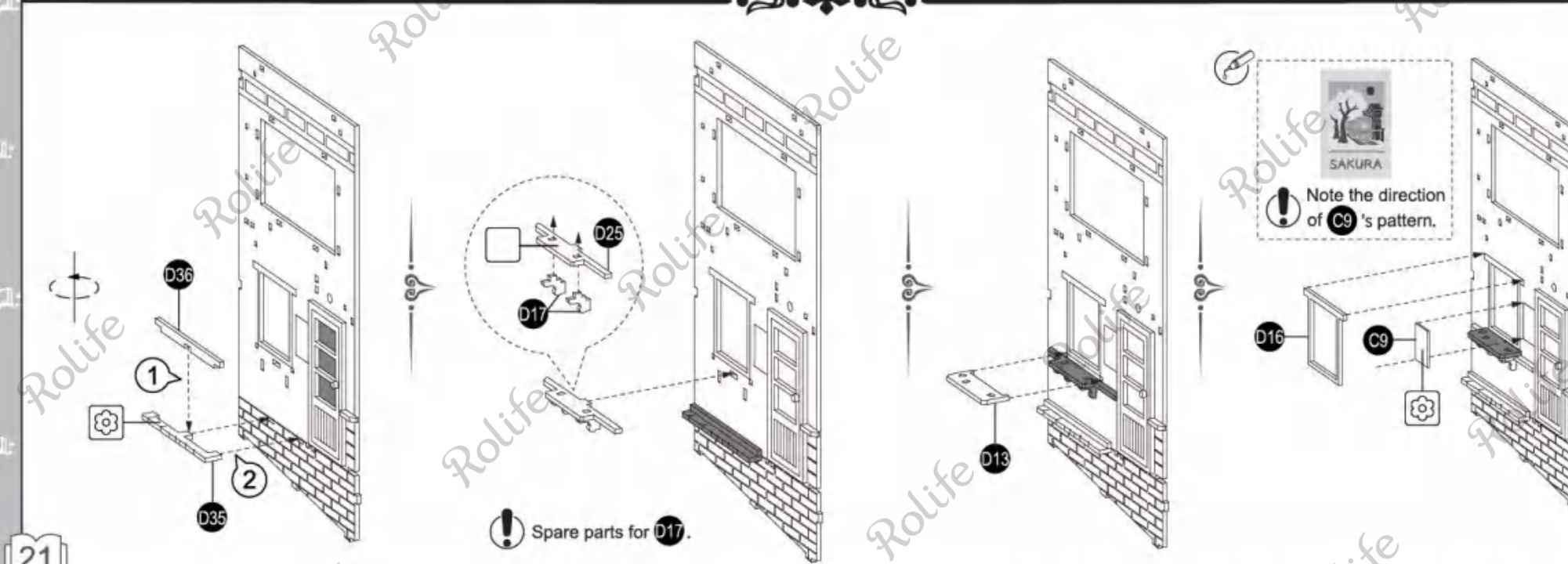
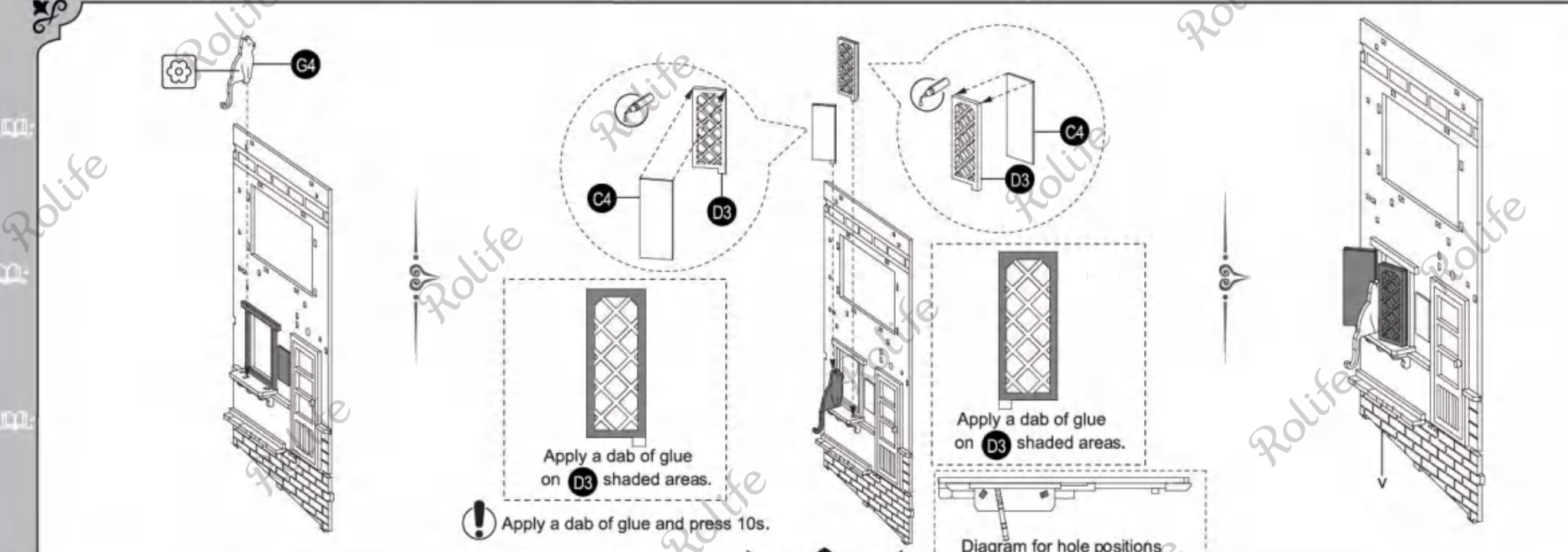
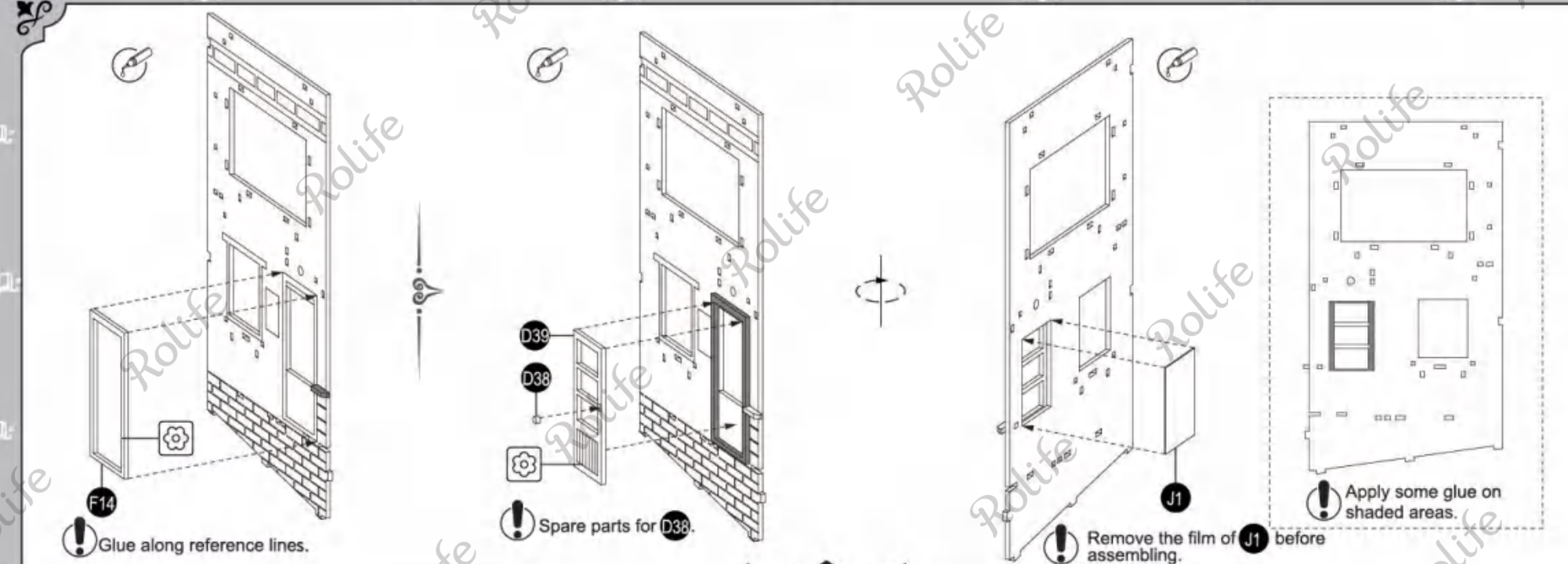


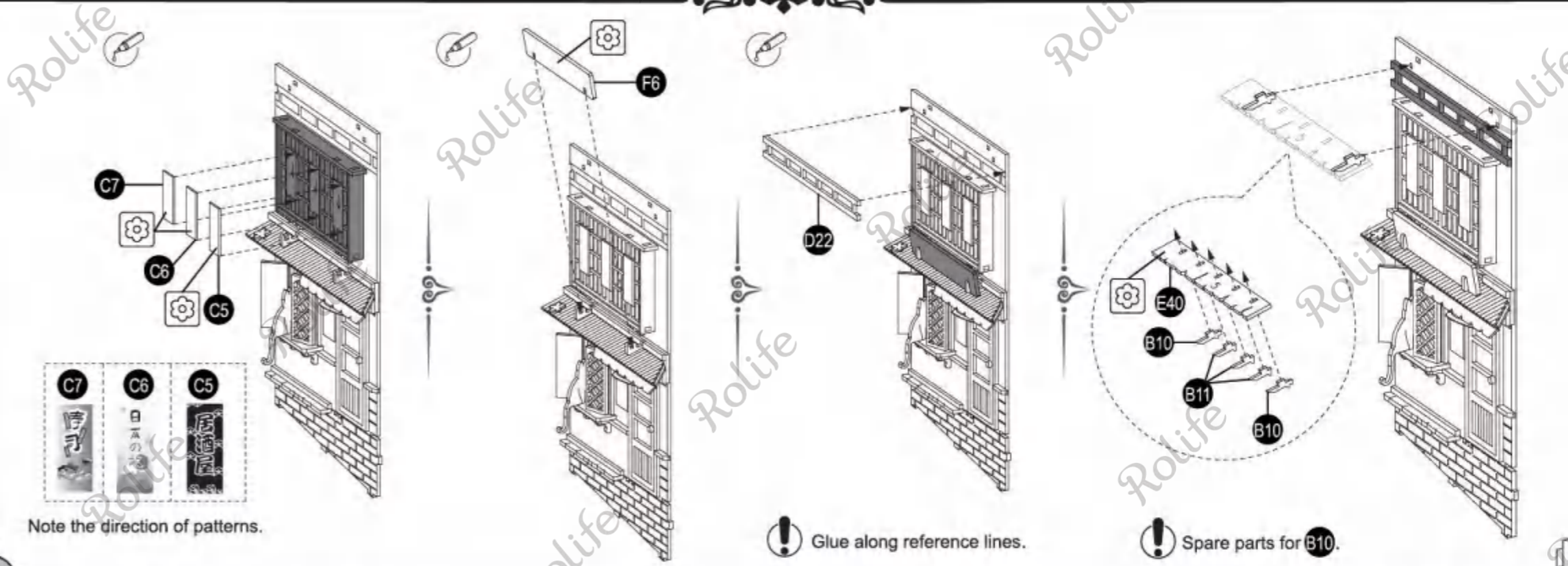
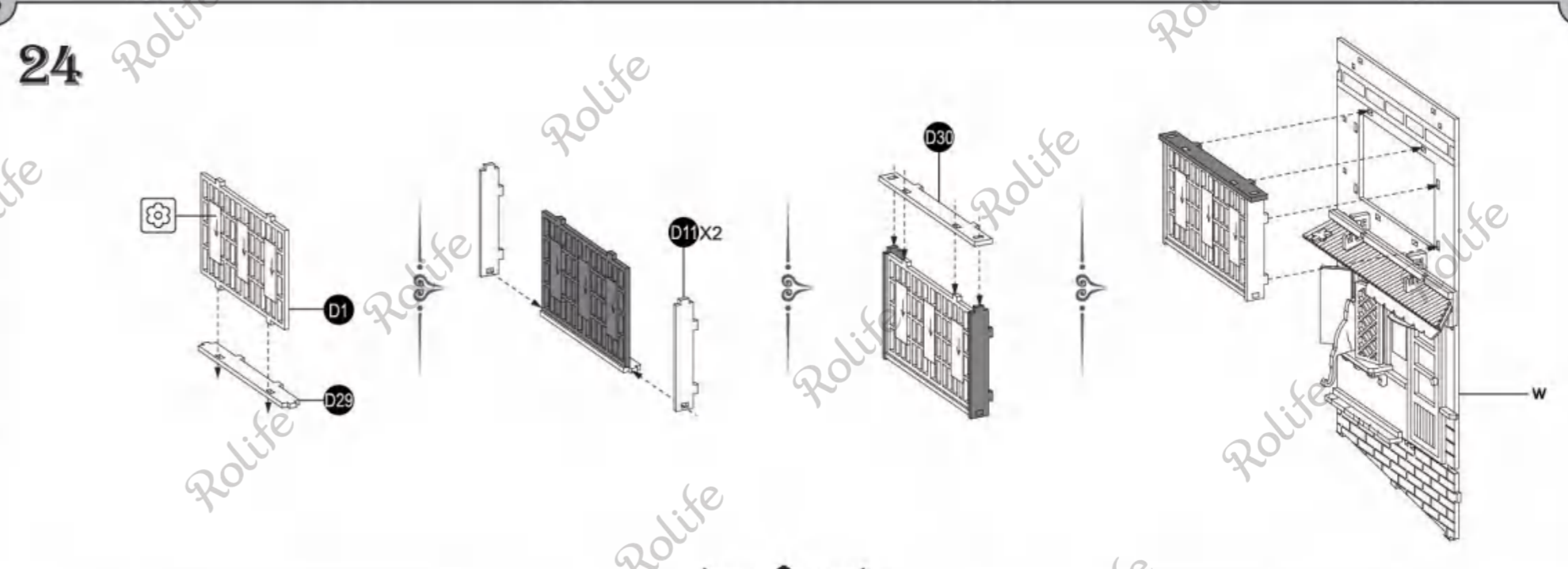
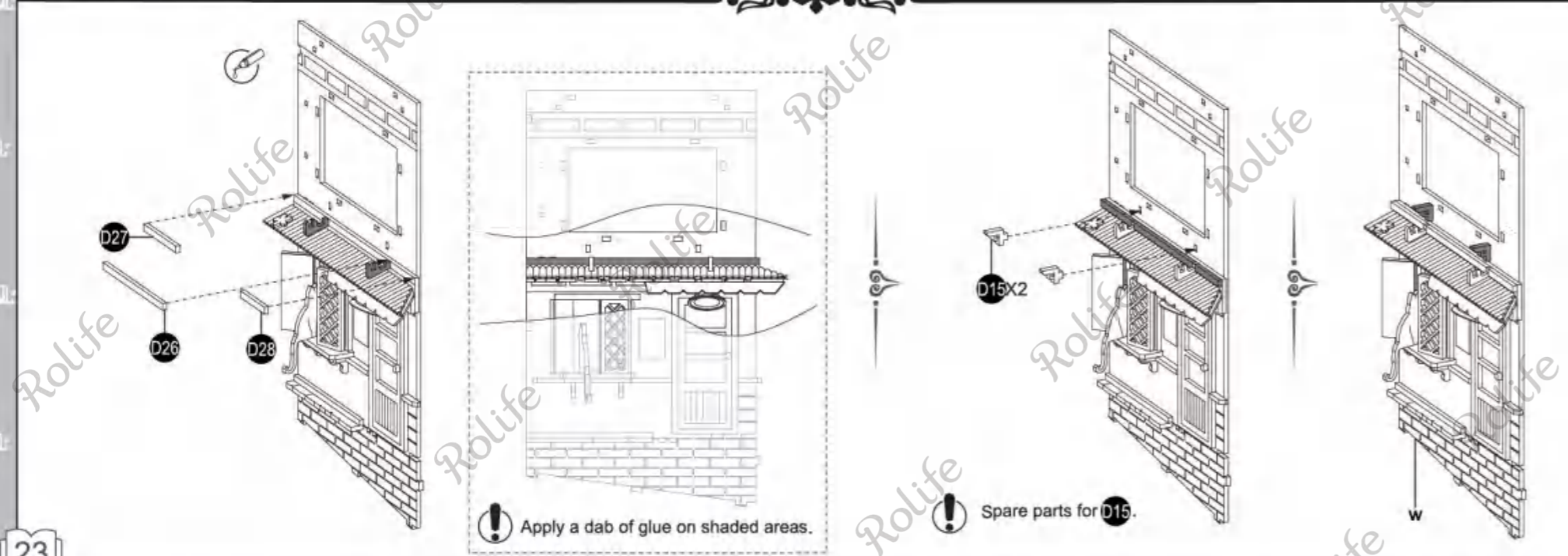
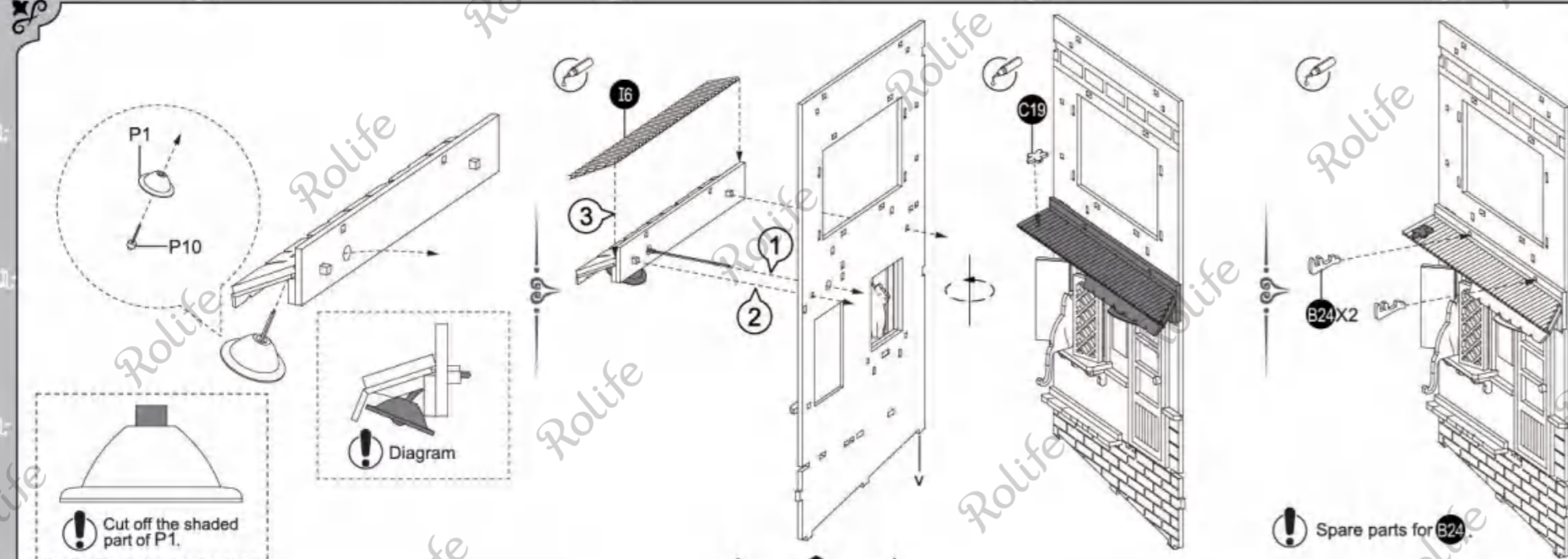
20

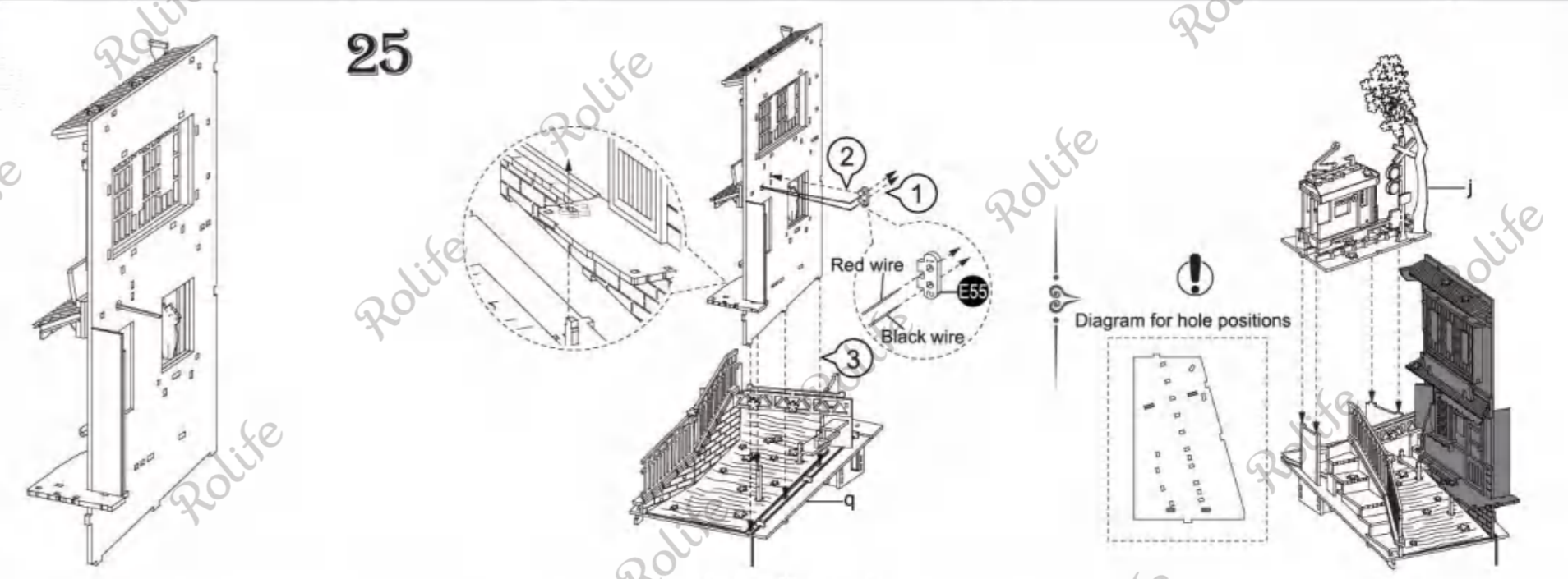
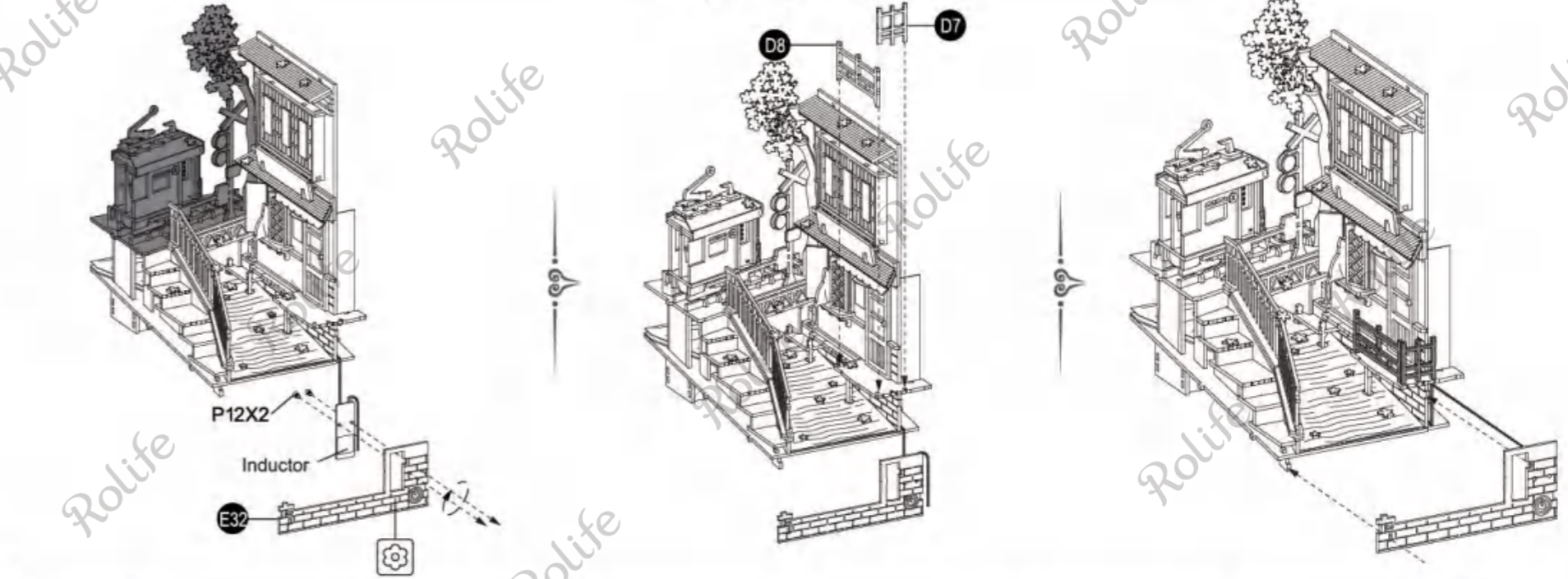
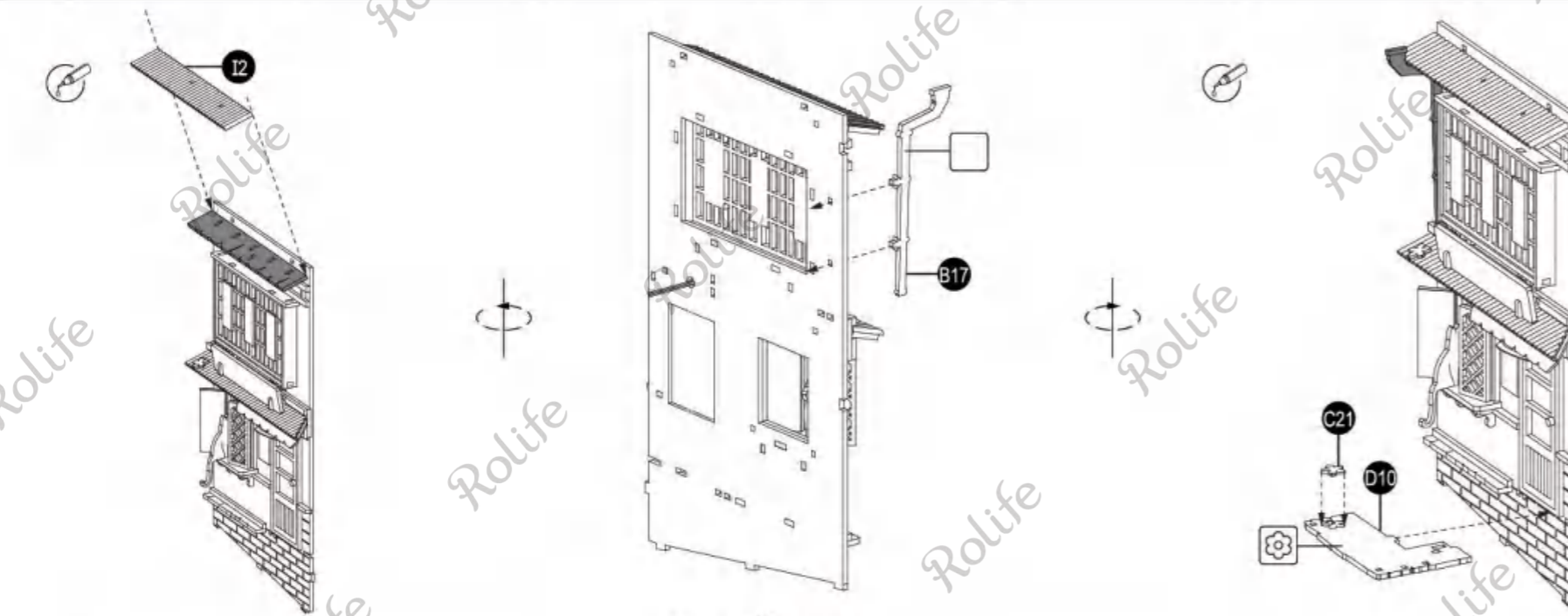
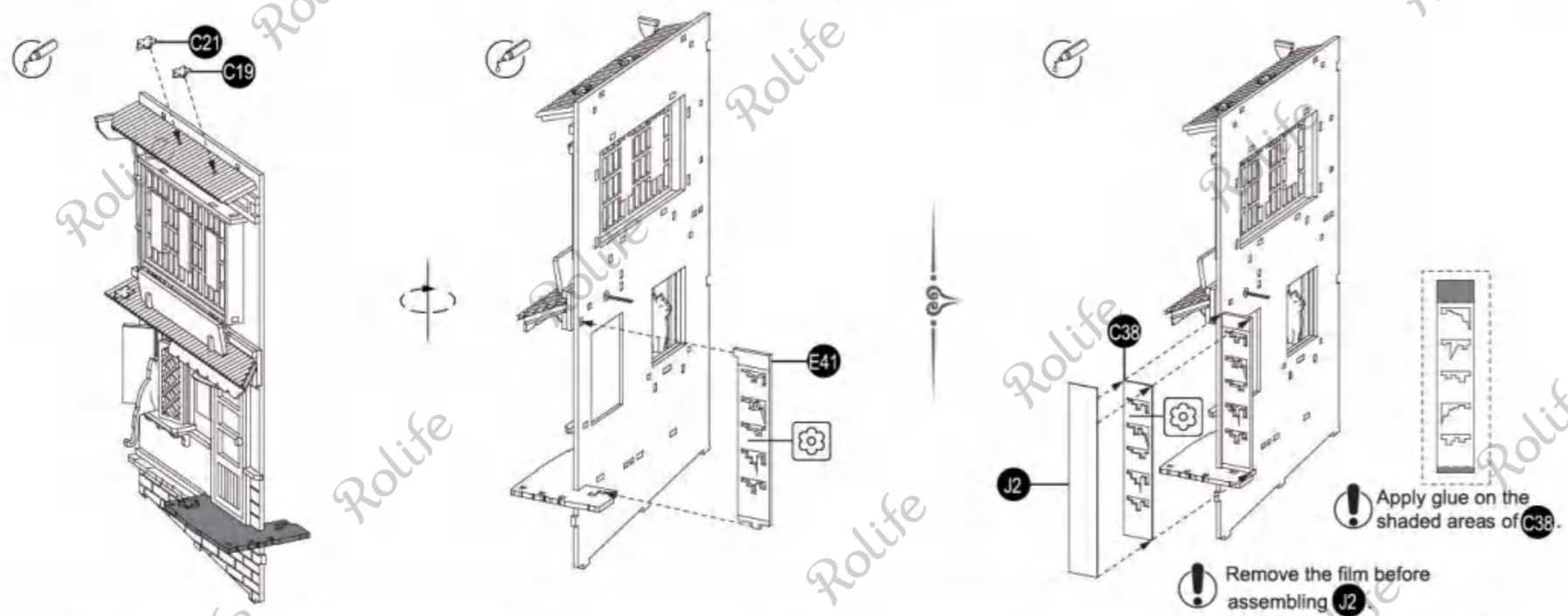


18

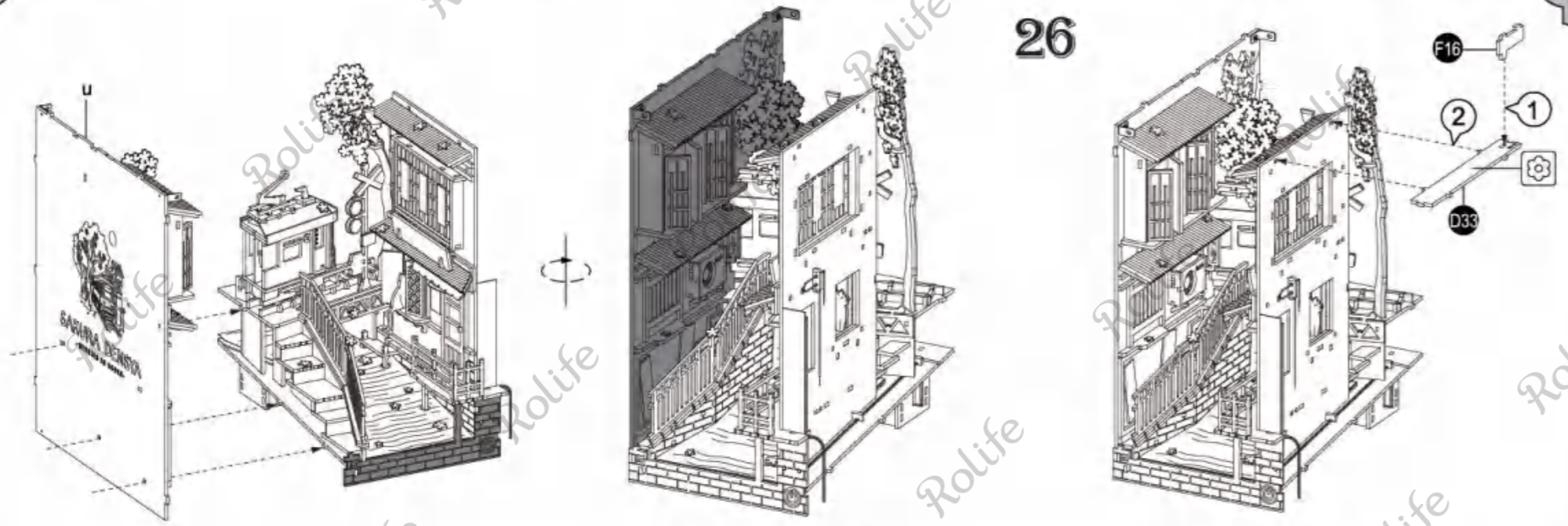








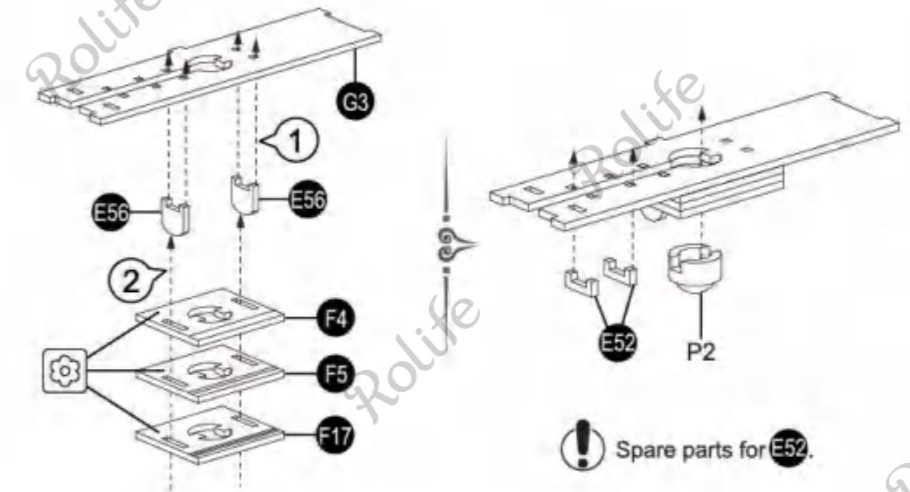
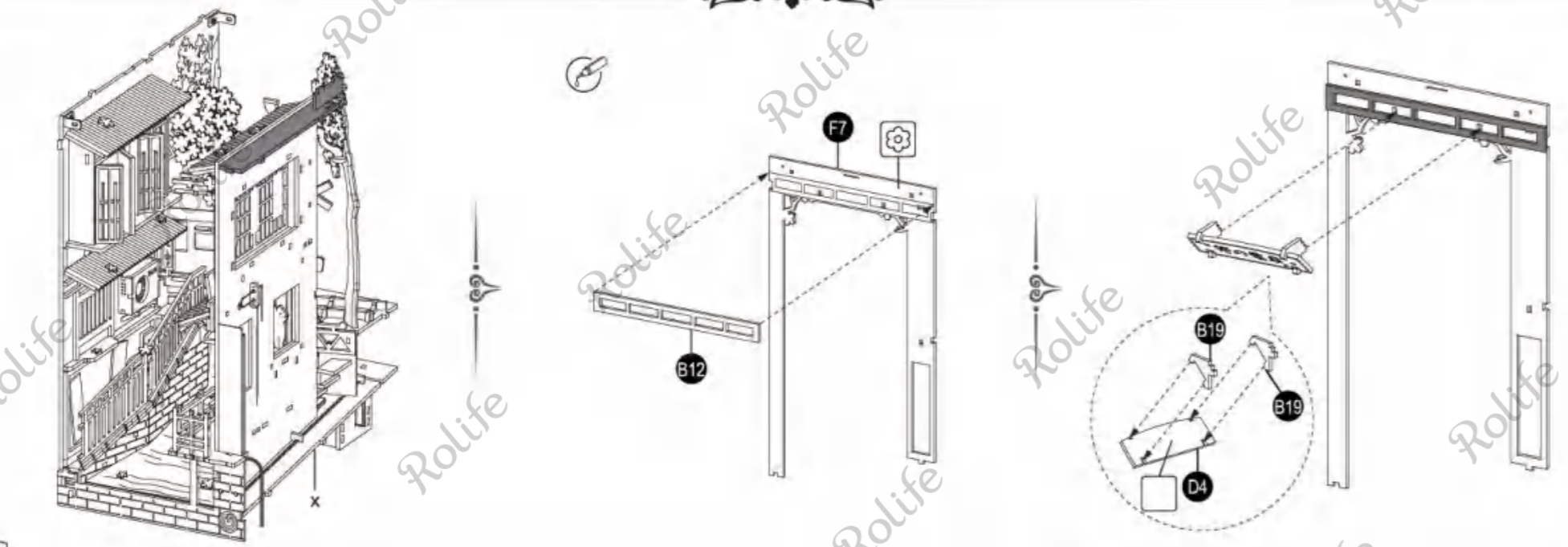
26



! Spare parts for B13 & B26.

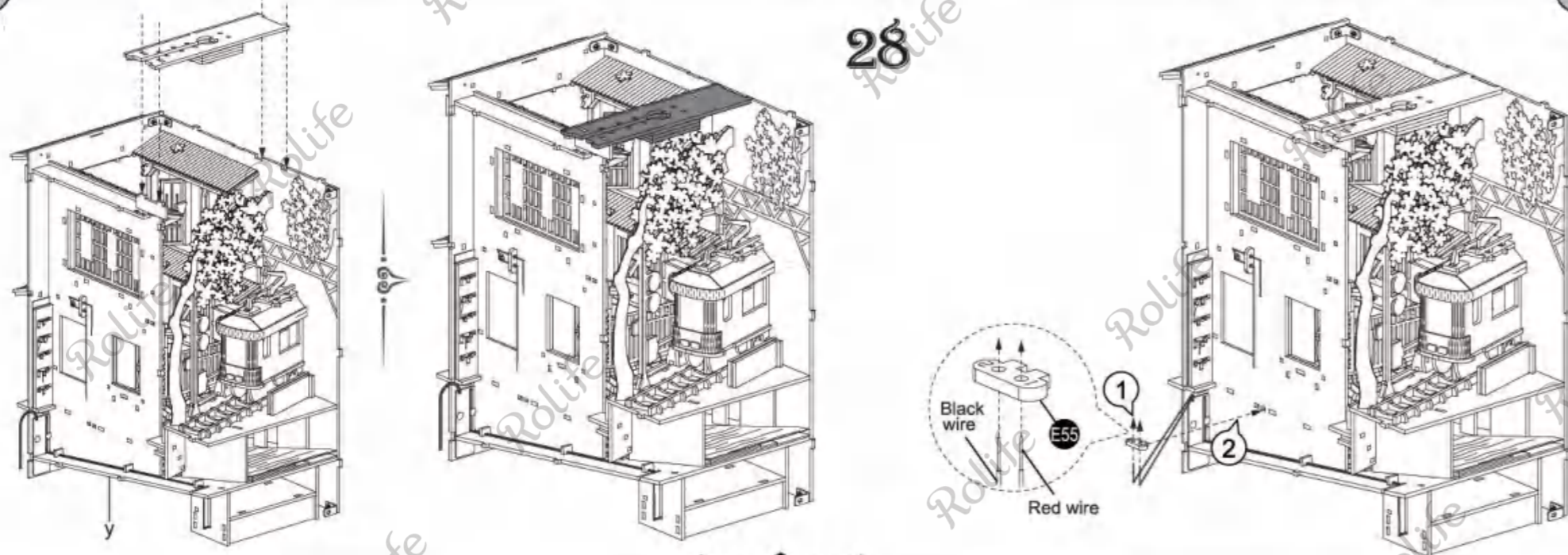
! Adjust the angle iron's position and tighten screws on both sides.

27

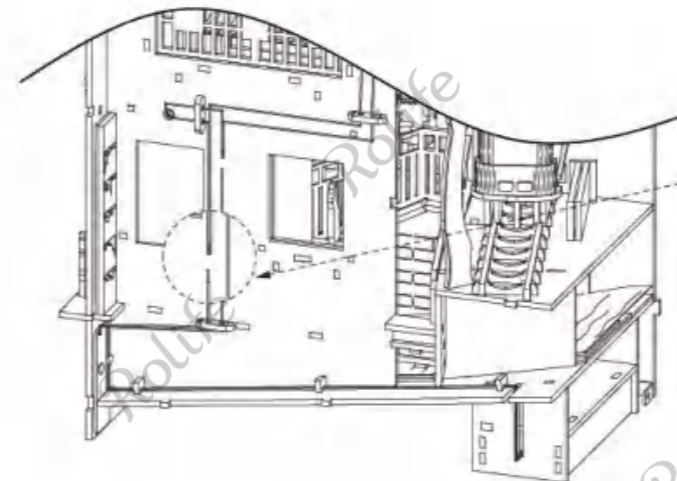


! Spare parts for E52.

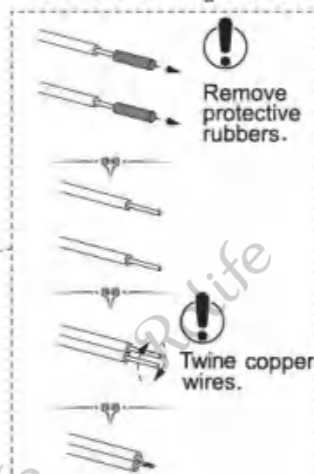
28



29



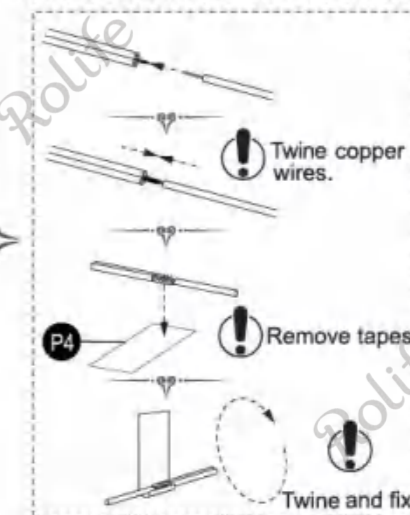
The black wire of light beads.



Remove protective rubbers.

Twine copper wires.

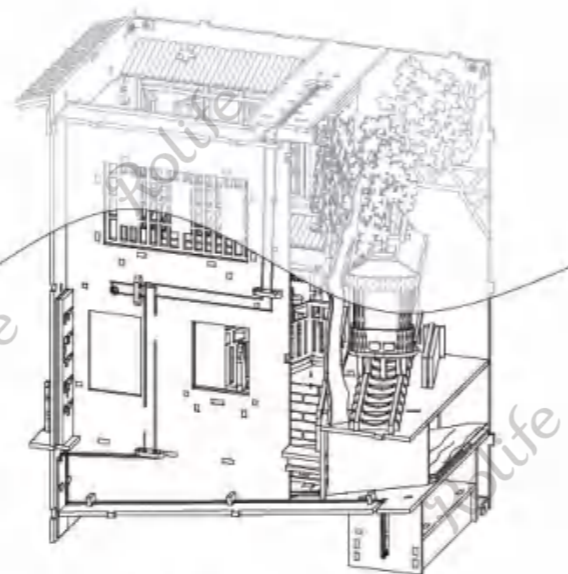
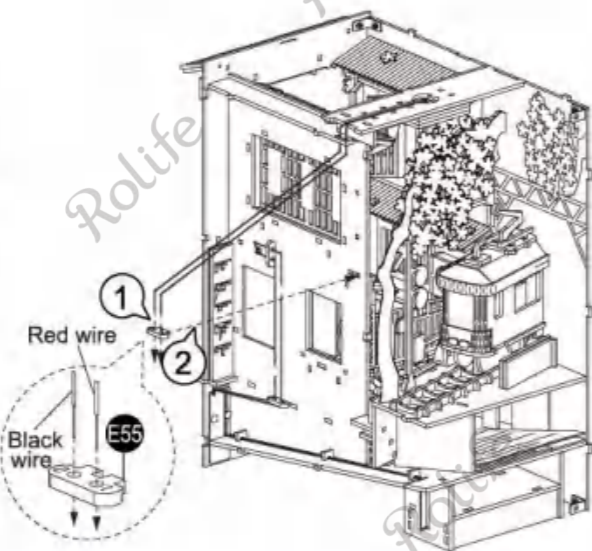
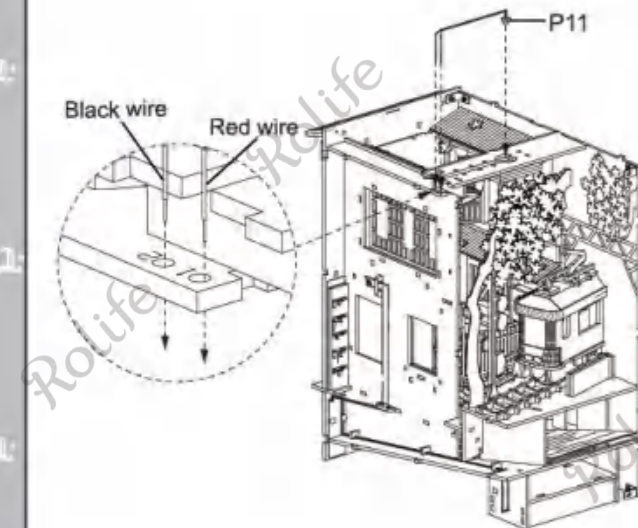
Connect with the black wires of the battery box. Complete.



Twine copper wires.

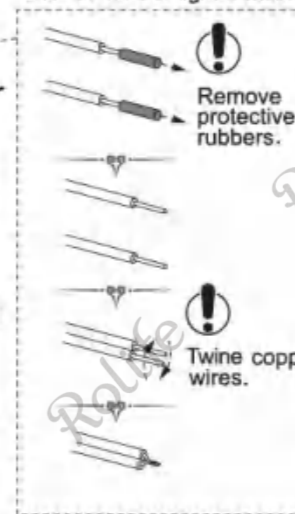
Remove tapes.

Twine and fix.



! Perspective conversion.

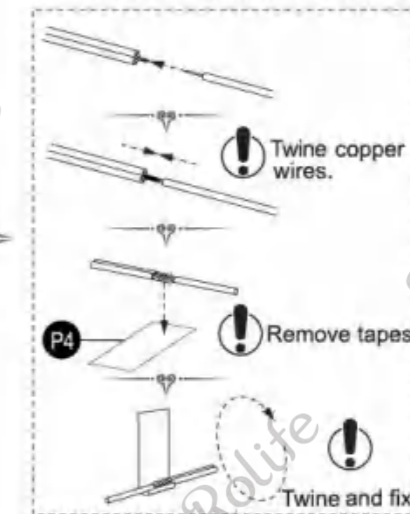
The red wire of light beads.



Remove protective rubbers.

Twine copper wires.

Connect with the red wires of the battery box. Complete.



Twine copper wires.

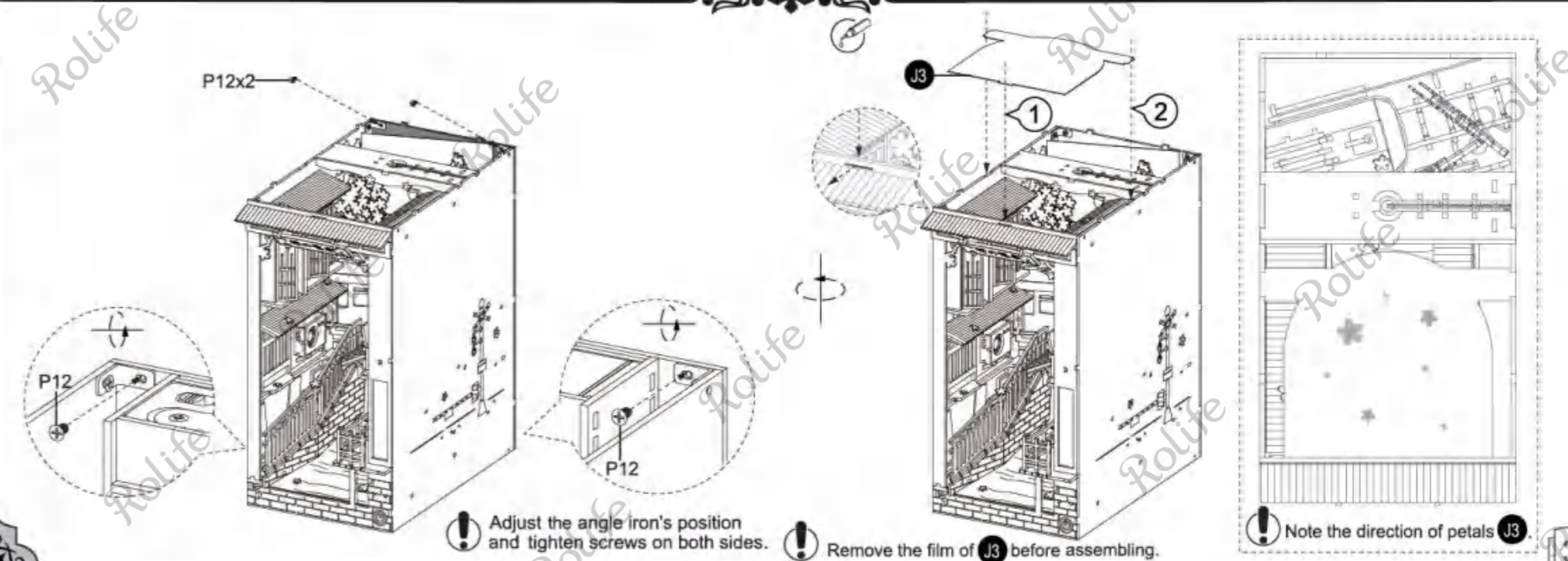
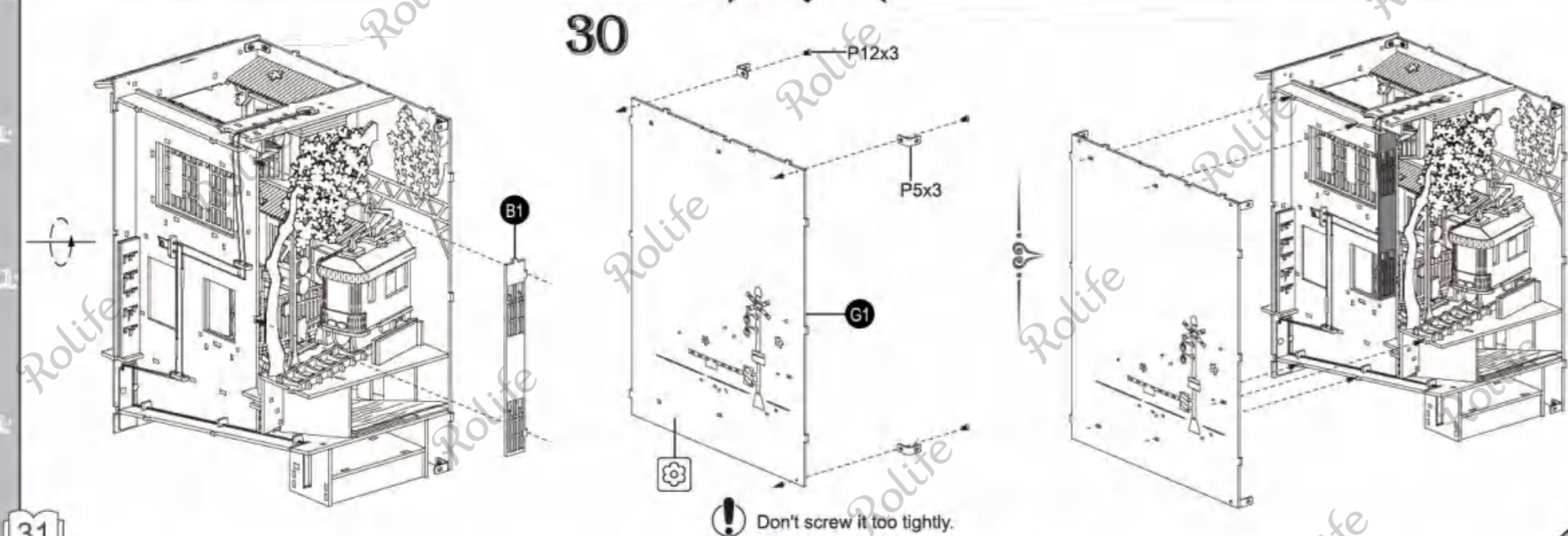
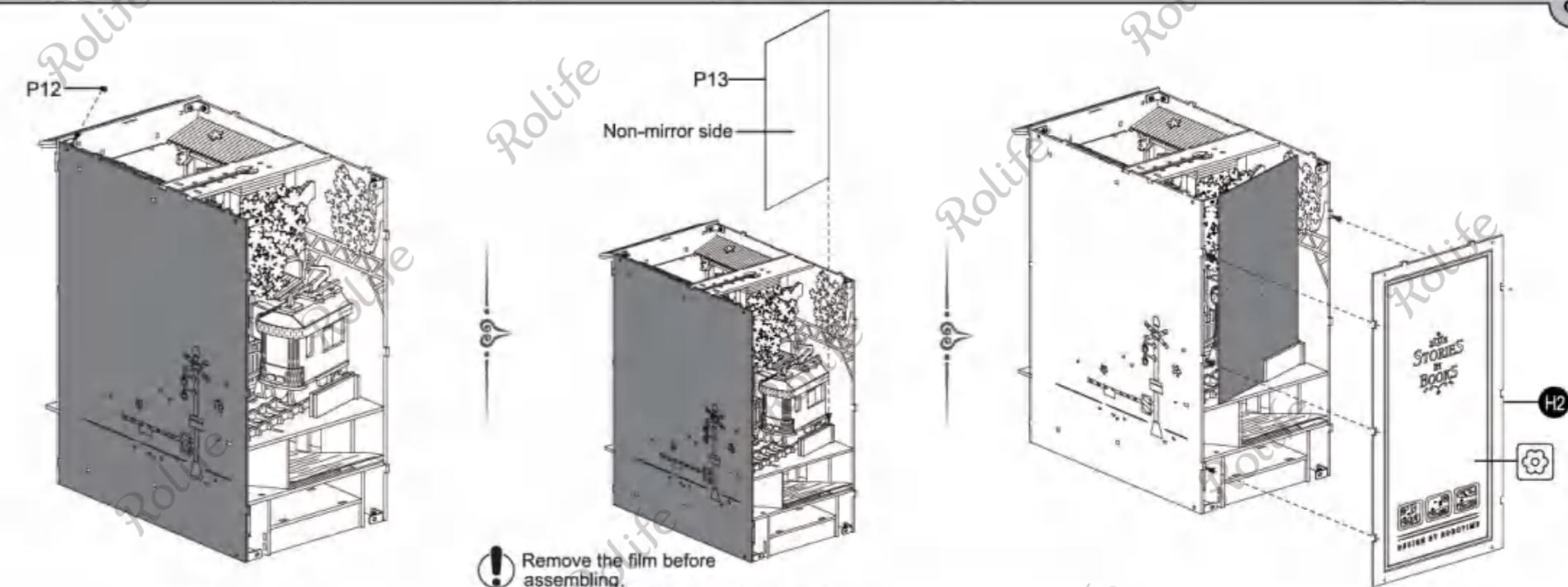
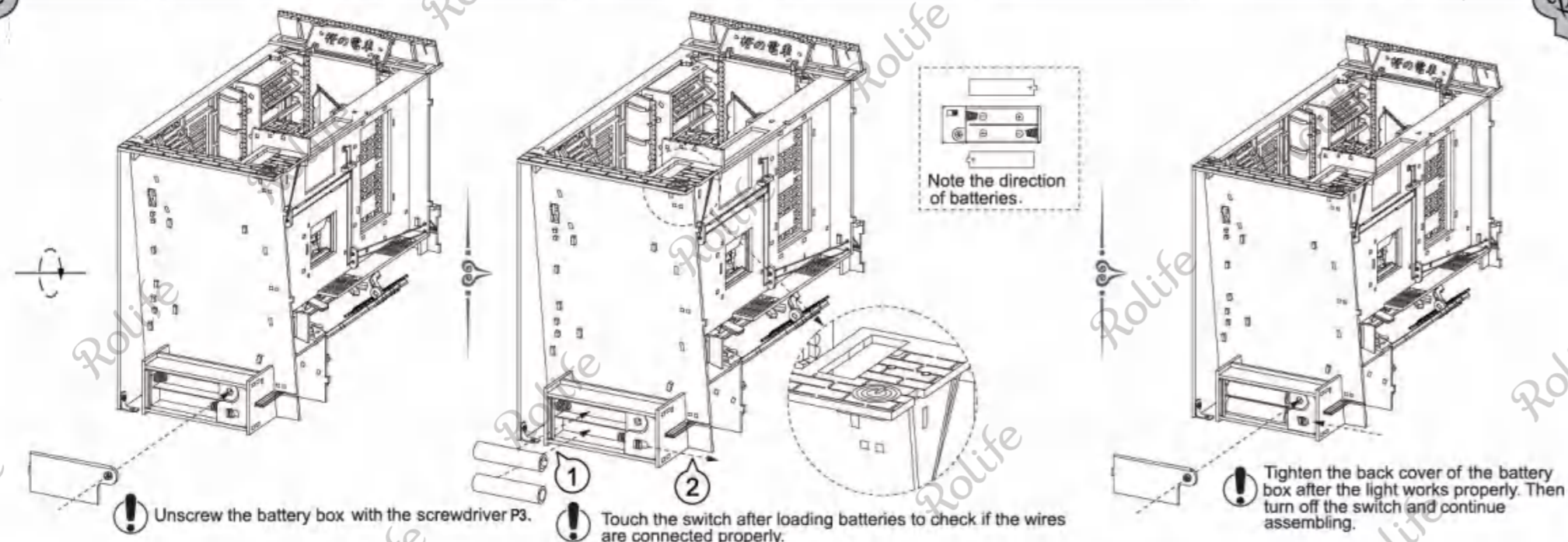
Remove tapes.

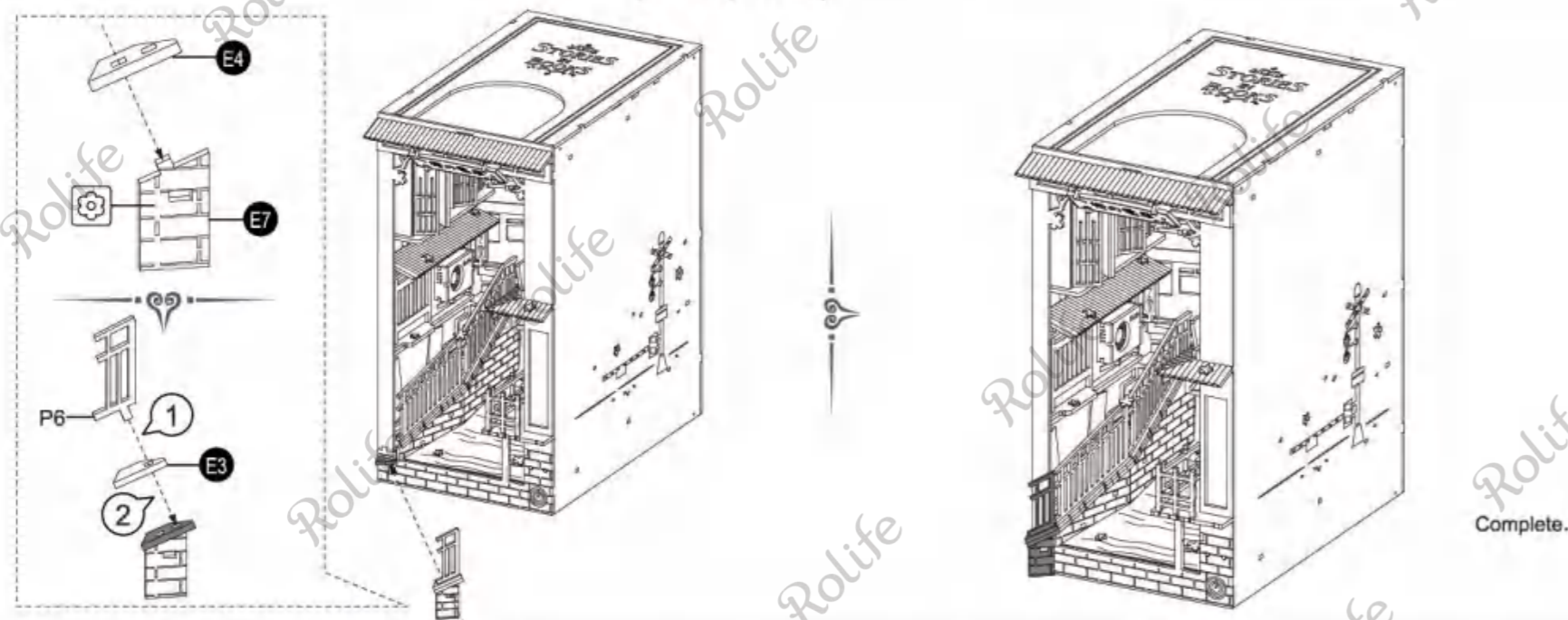
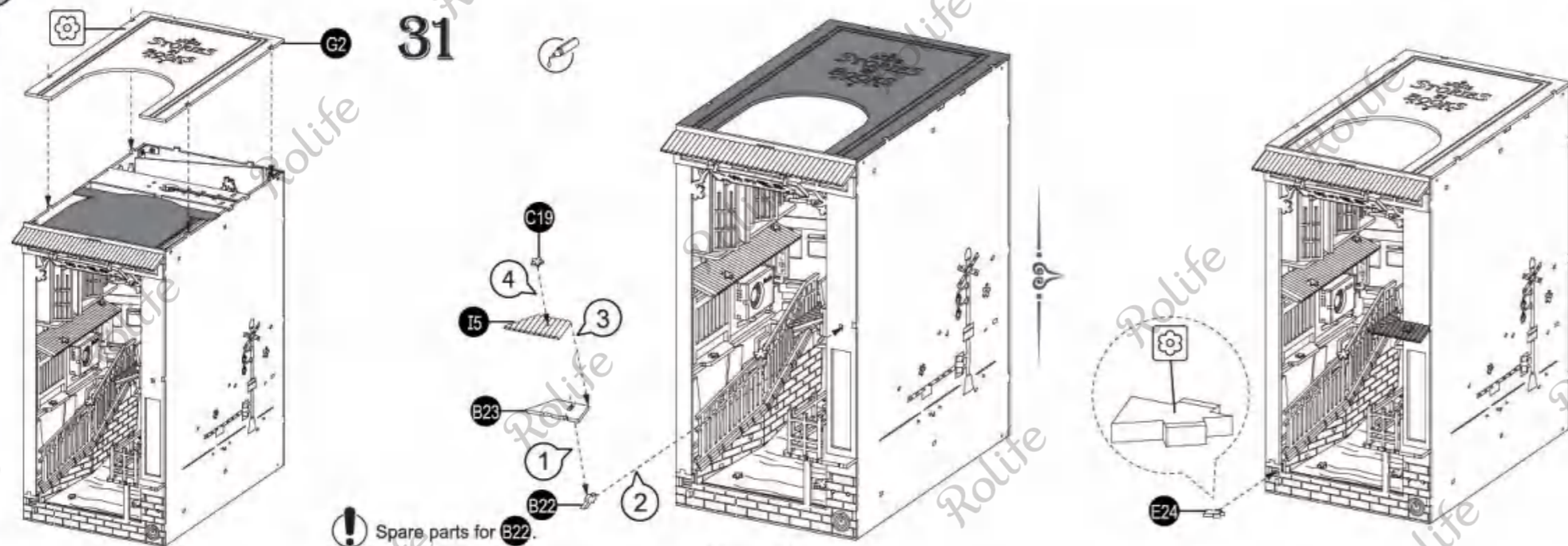
Twine and fix.



29

30





**BOOK NOOK  
& WONDERLAND**

**SAKURE  
DENSYA**  
TGB01



**TGB01**  
Sakura Densya



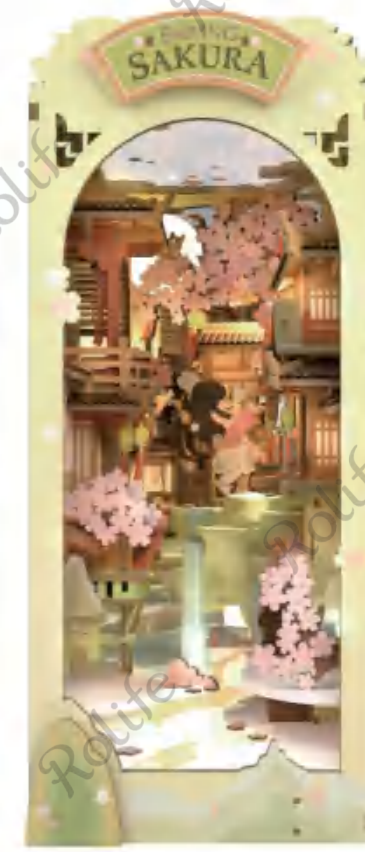
**TGB02**  
Sunshine Town



**TGB03**  
Magic House



**TGB04**  
Time Travel



**TGB05**  
Falling Sakura