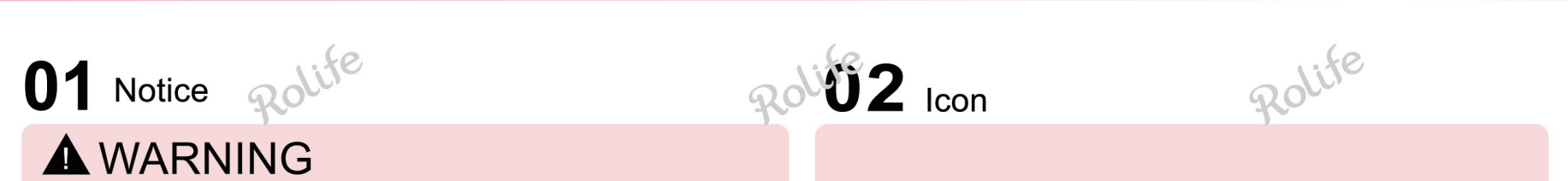




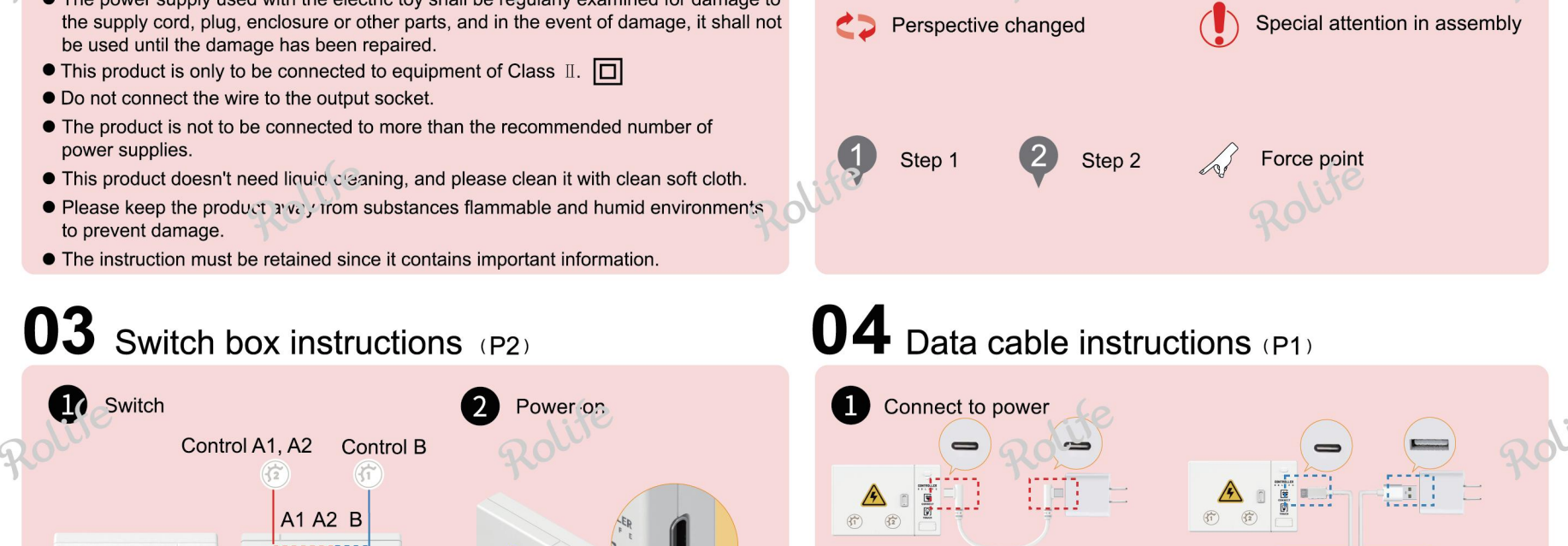
# SUPER CREATOR SUPER STORE

## Lovely Pink Bedroom

The picture is for reference only.



### Assembly Tips



### 01 Notice

**WARNING**

- Not suitable for children under 3 years old.
- The product shall only be used with a transformer for product or a power supply for it.
- The product shall be used with the power supply supplied, if the transformer is supplied with the product.
- The transformer or power supply is not a toy or model.
- Misuse of transformer can cause electrical shock.
- The power supply used with the electric toy shall be regularly examined for damage to the supply cord, plug, enclosure or other parts, and in the event of damage, it shall not be used until the damage has been repaired.
- This product is only to be connected to equipment of Class II.
- Do not connect the wire to the output socket.
- The product is not to be connected to more than the recommended number of power supplies.
- This product doesn't need liquid cleaning, and please clean it with clean soft cloth.
- Please keep the product away from substances flammable and humid environments to prevent damage.
- The instruction must be retained since it contains important information.

### 02 Icon

Please secure parts as shown in case of any parts loosening:

- Use double-sided adhesive dot
- Use long-strip adhesive tape

Perspective changed

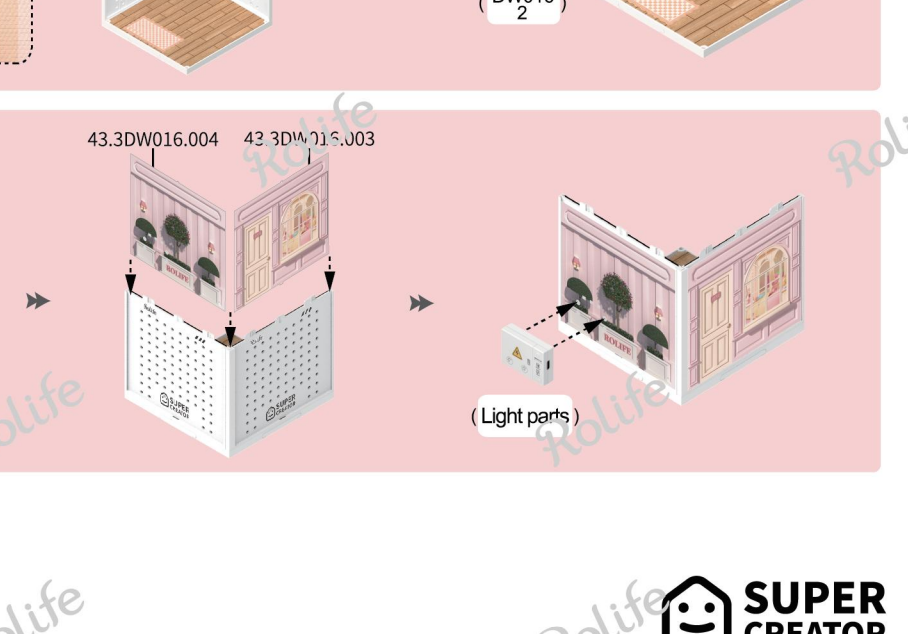
Special attention in assembly

Step 1 Step 2 Force point

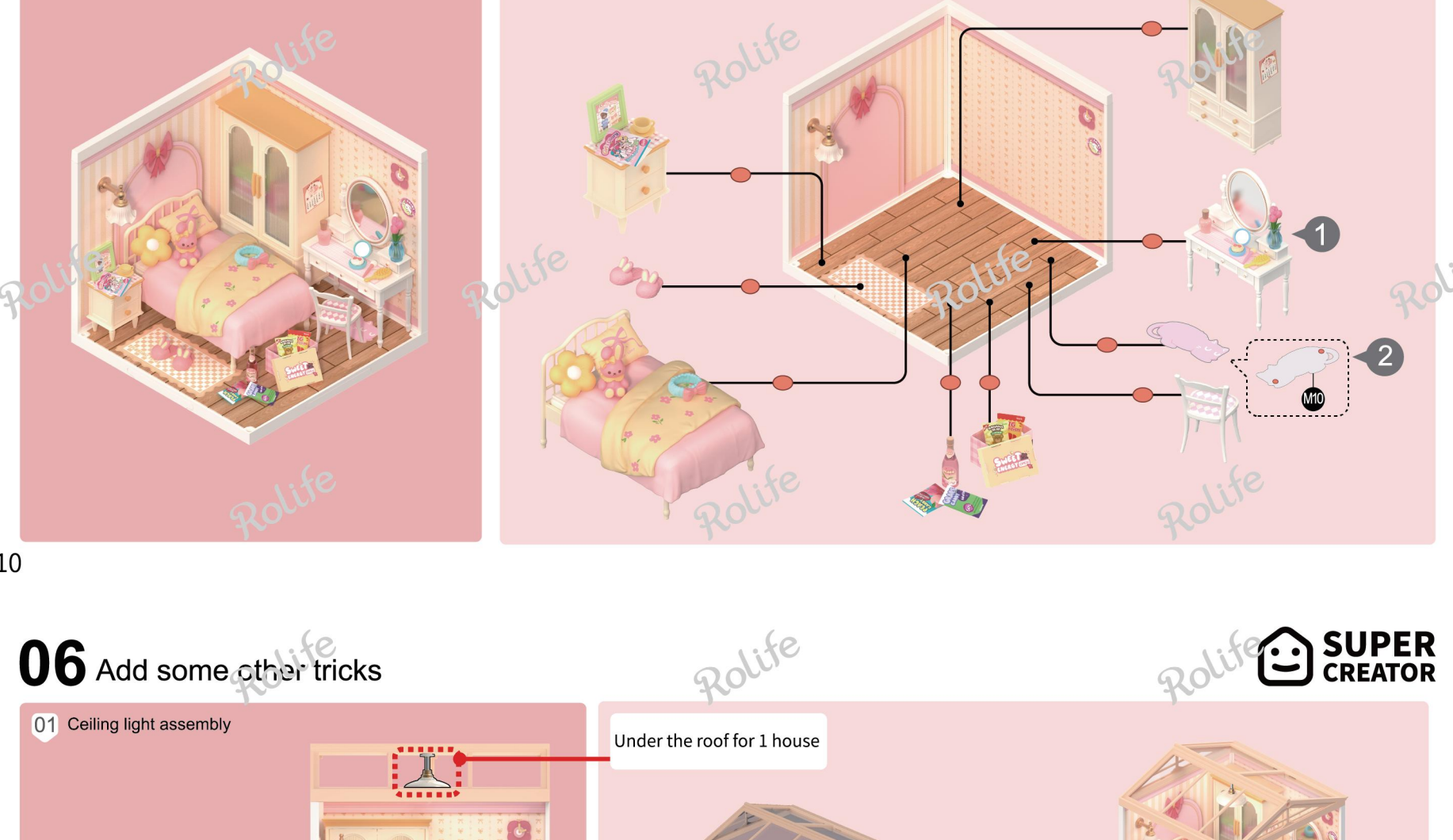
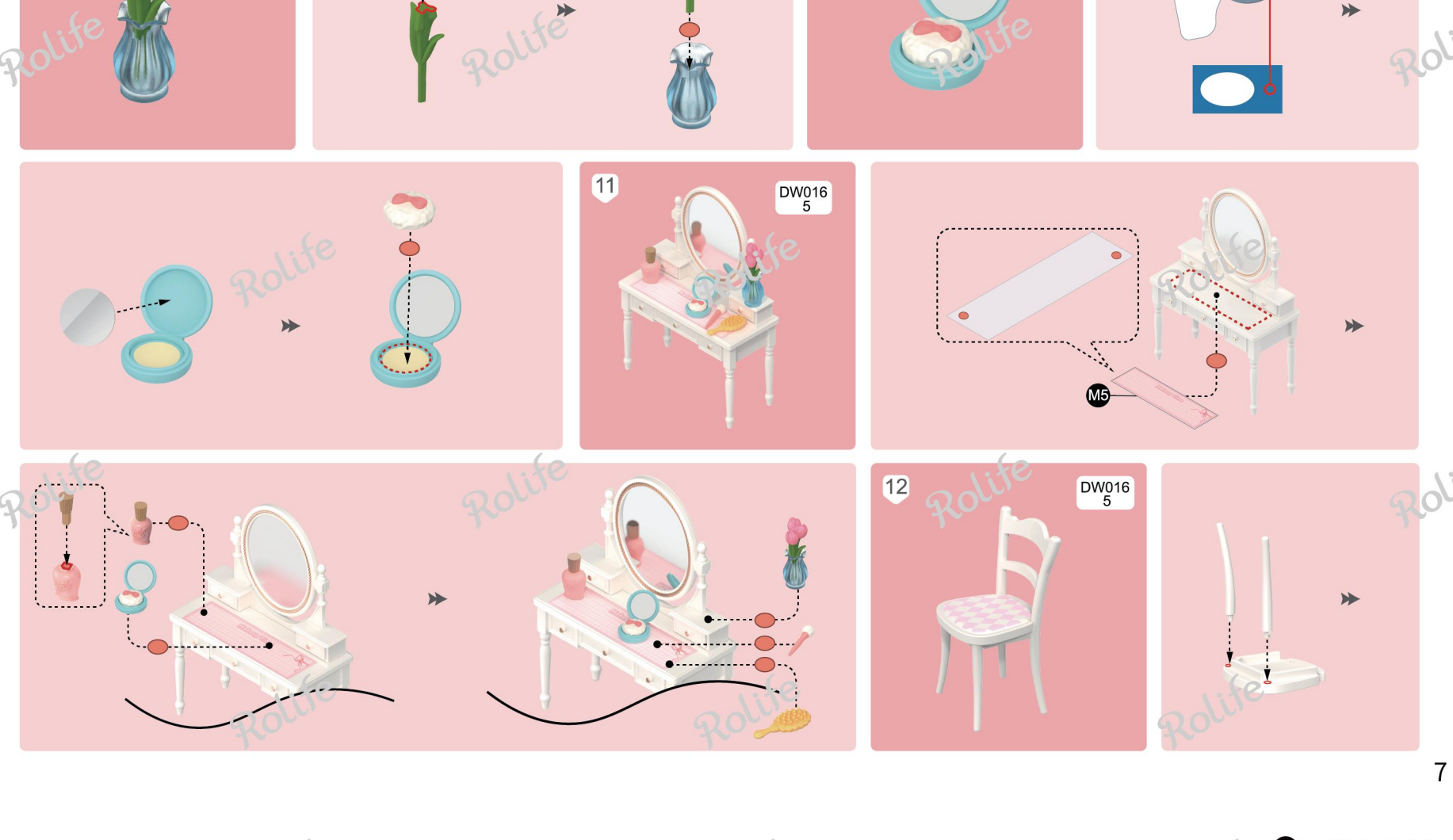
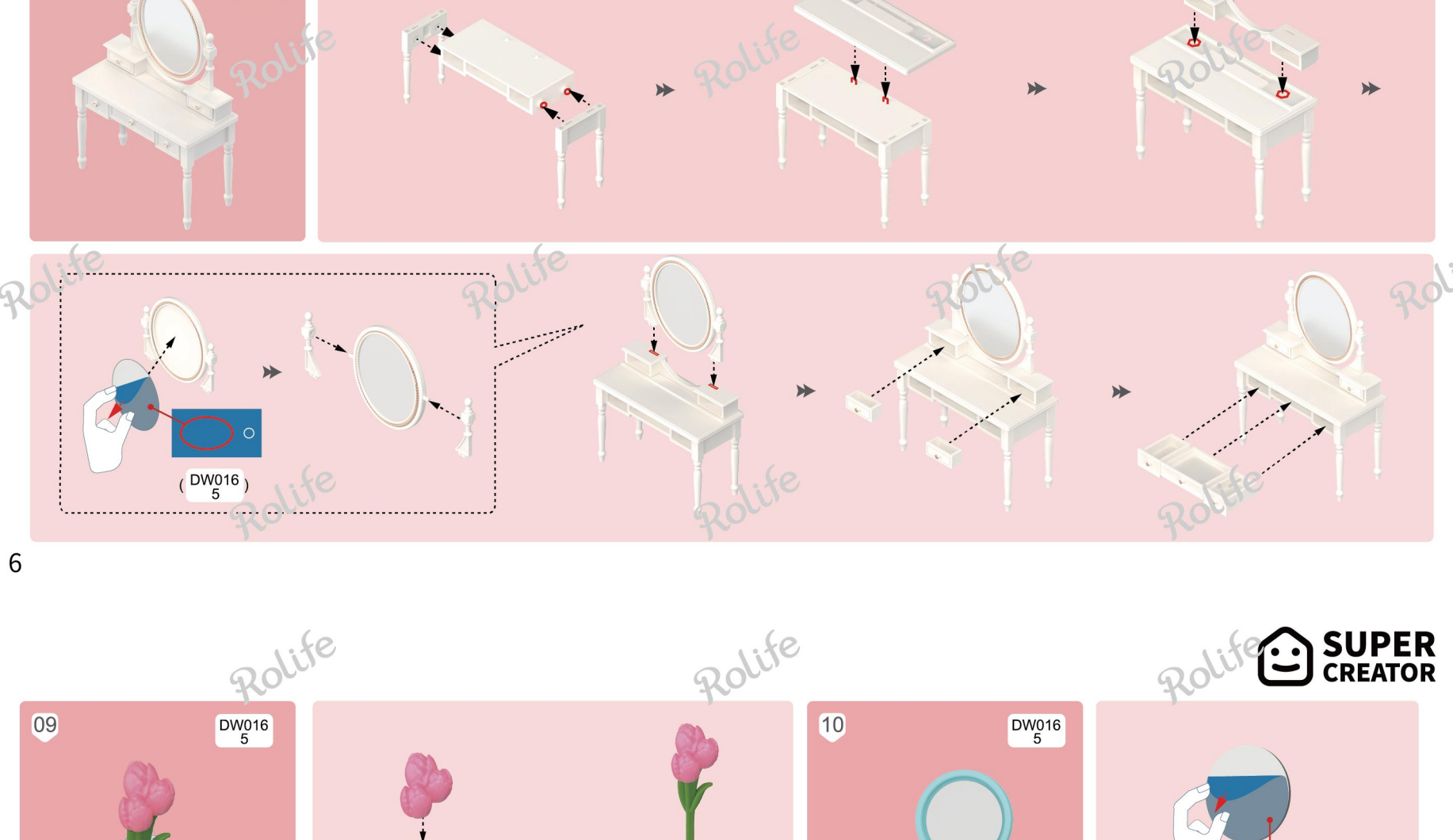
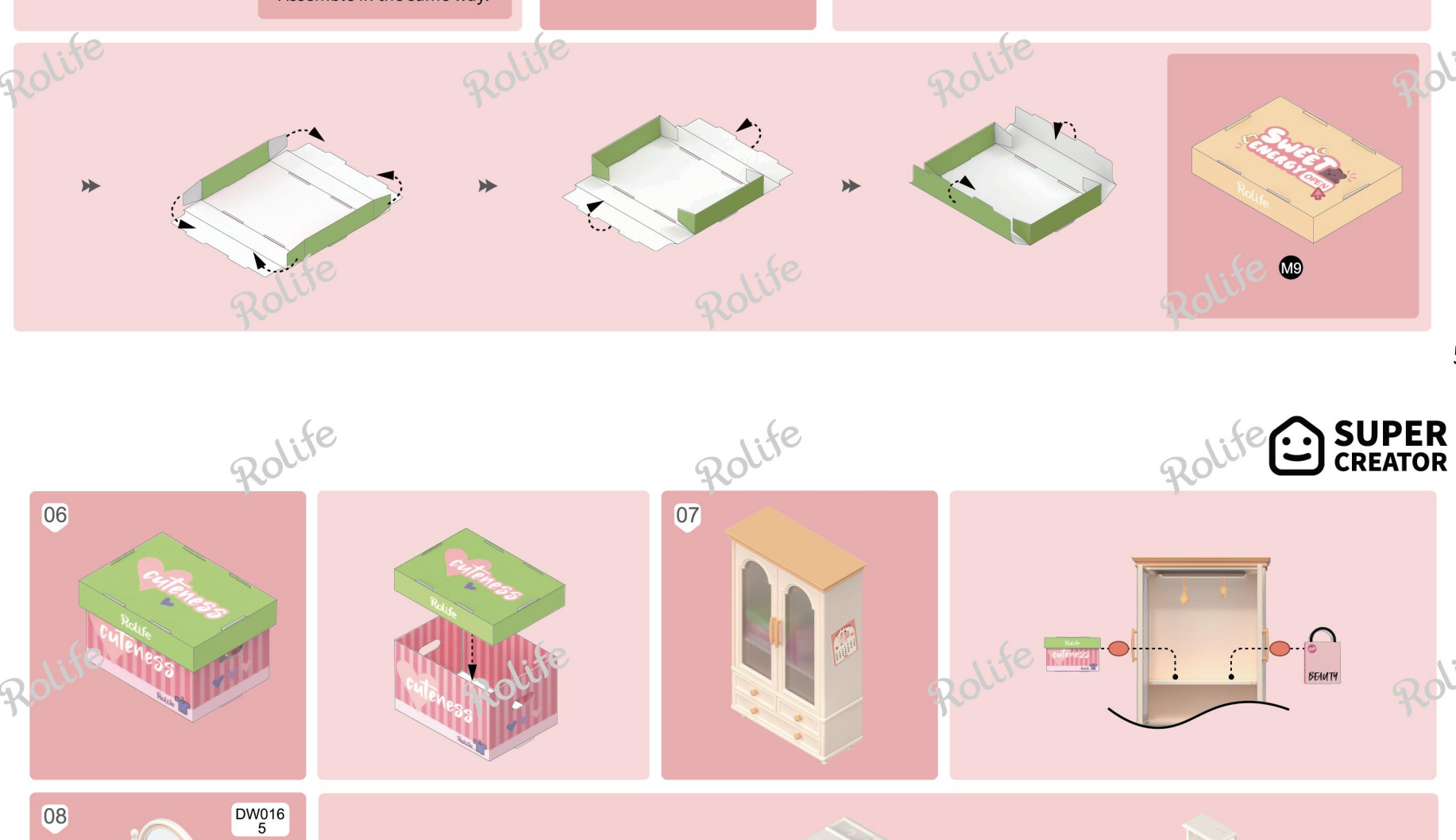
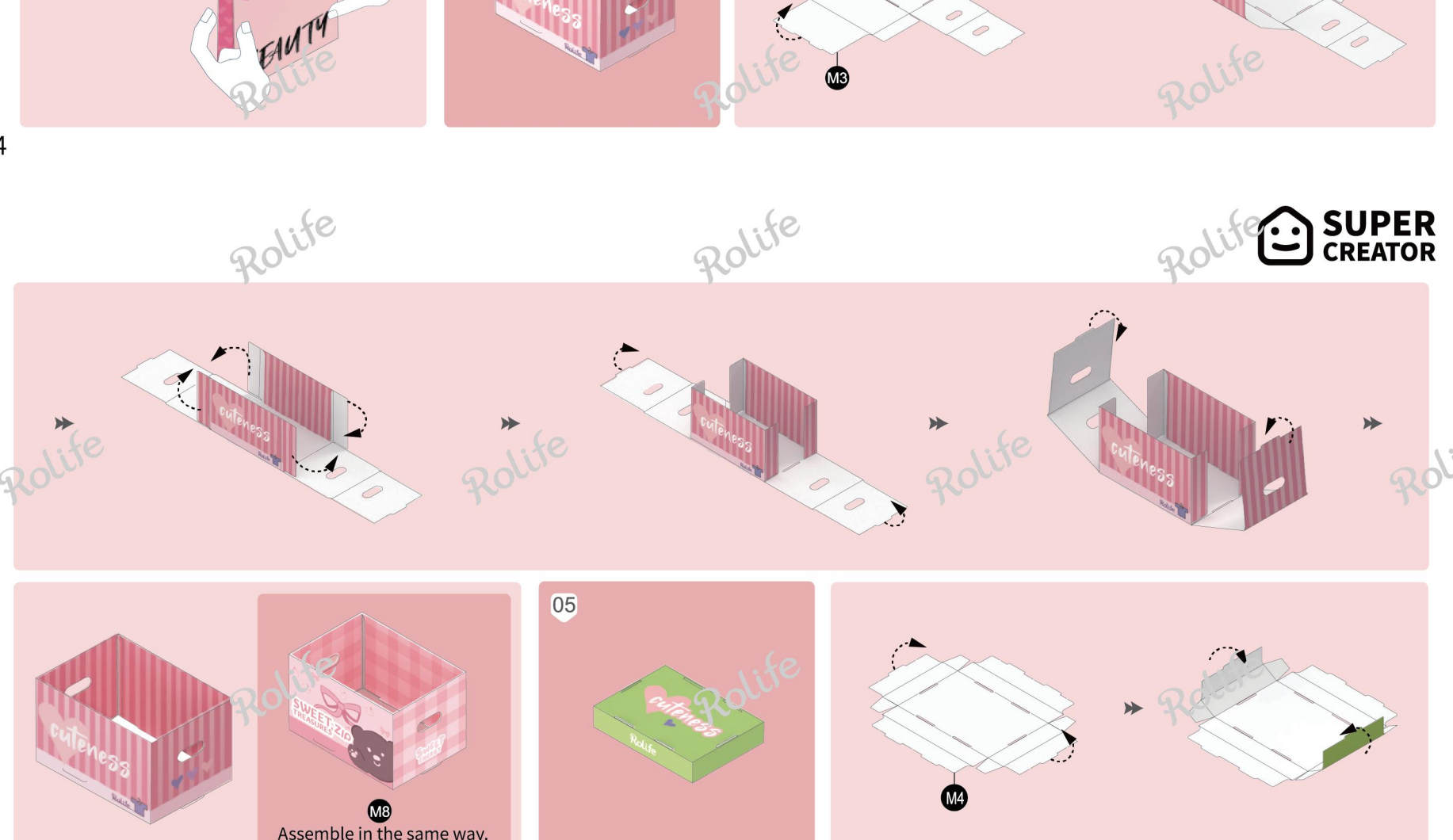
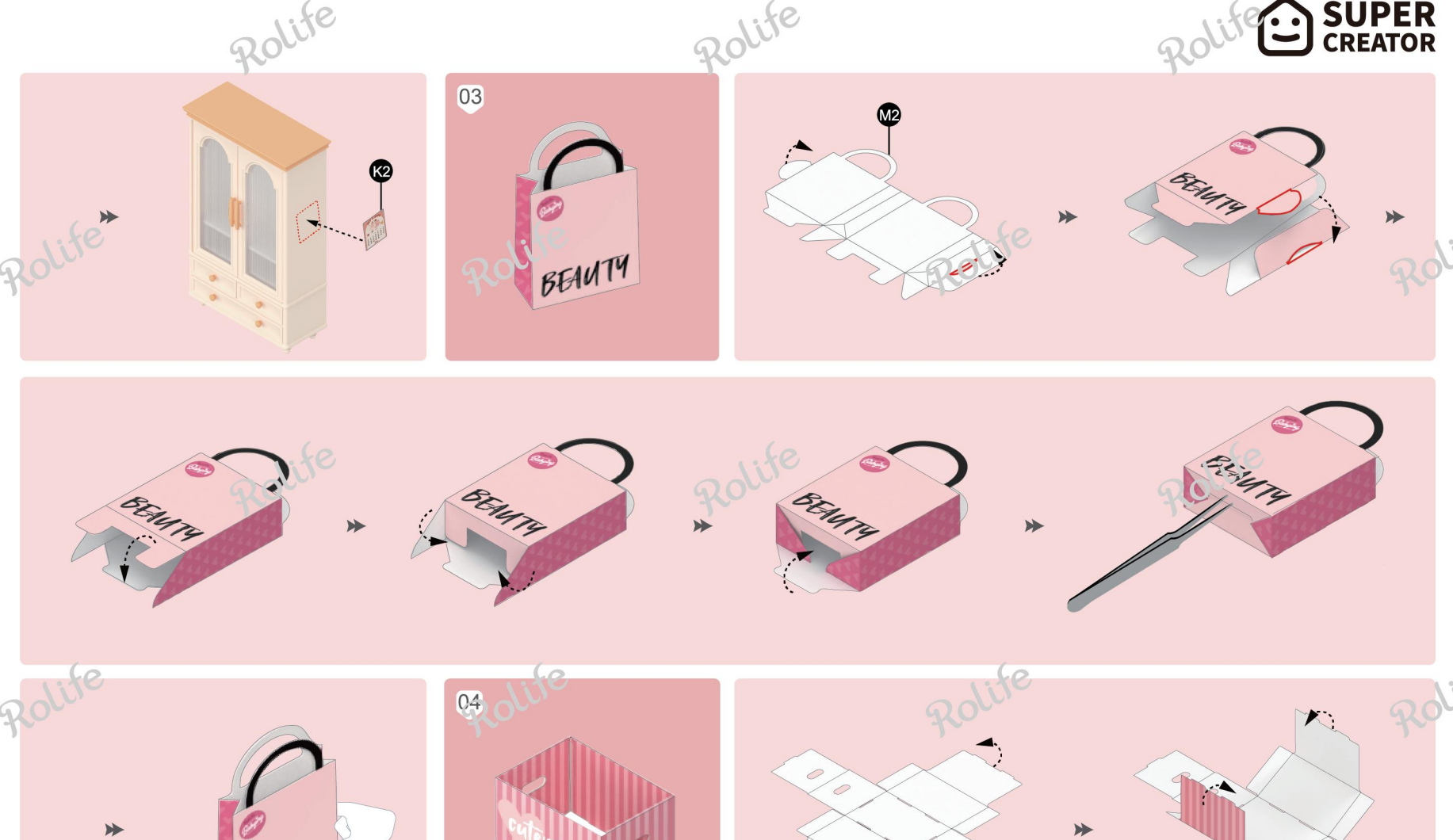
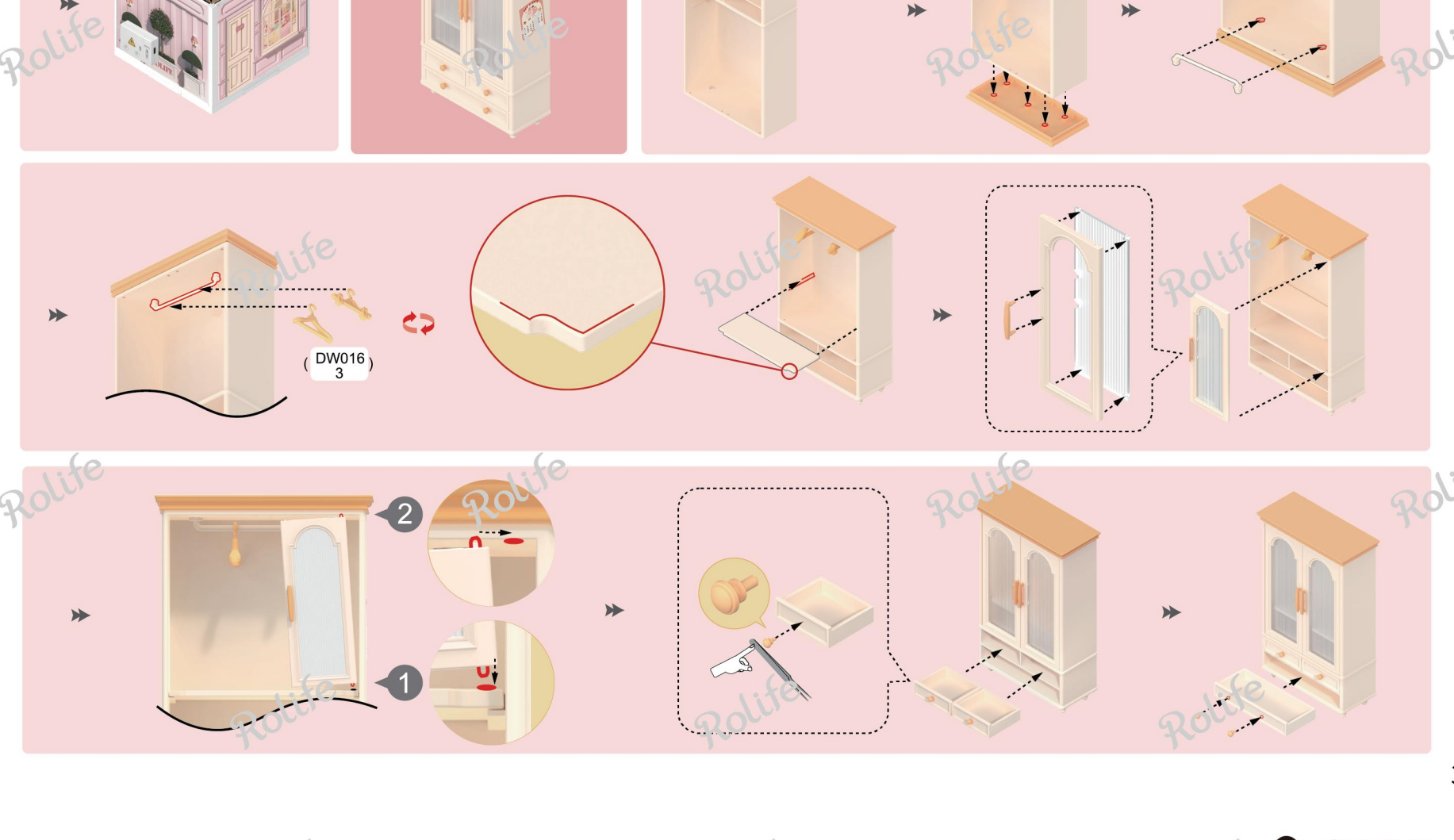
### 03 Switch box instructions (P2)



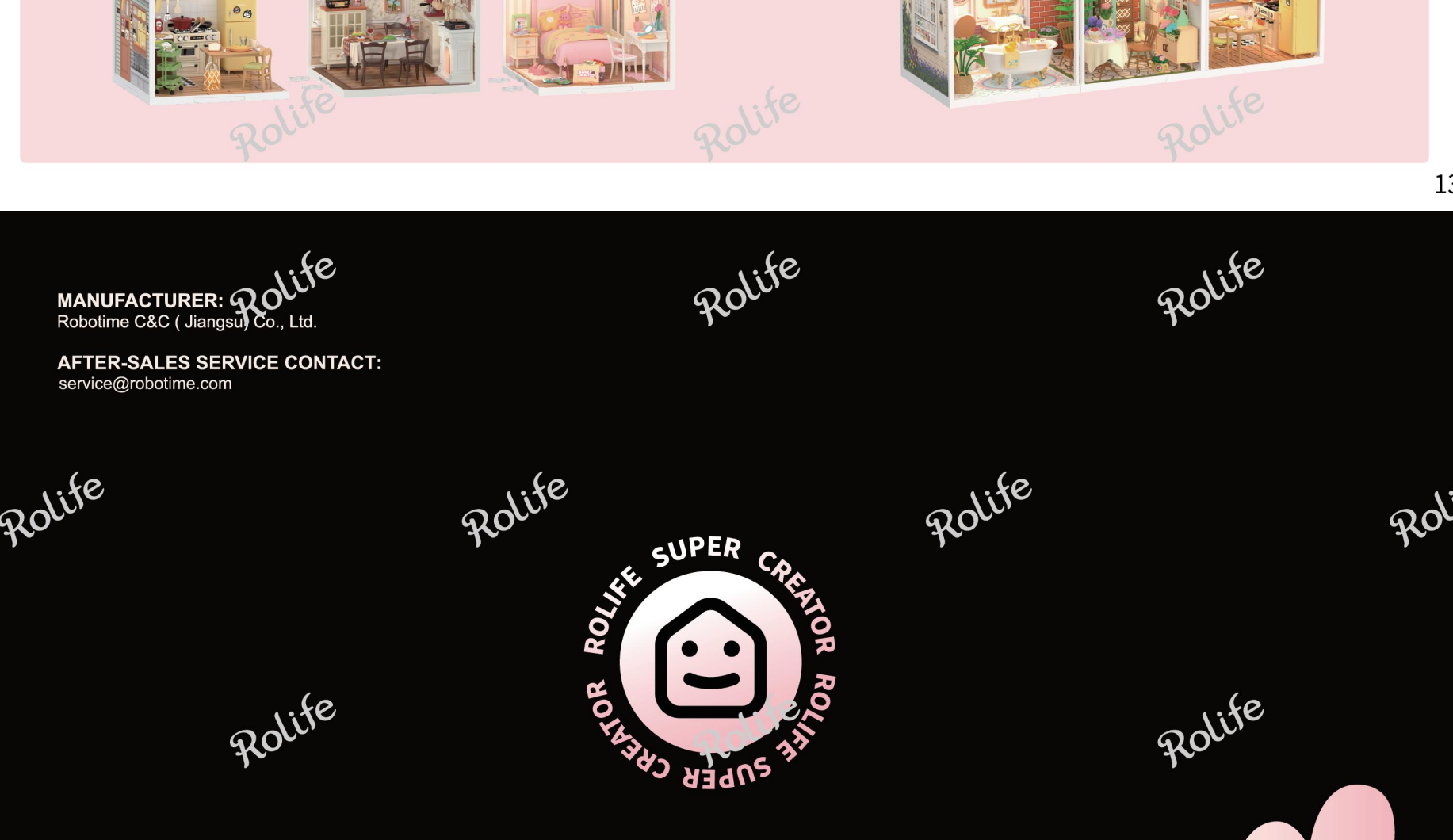
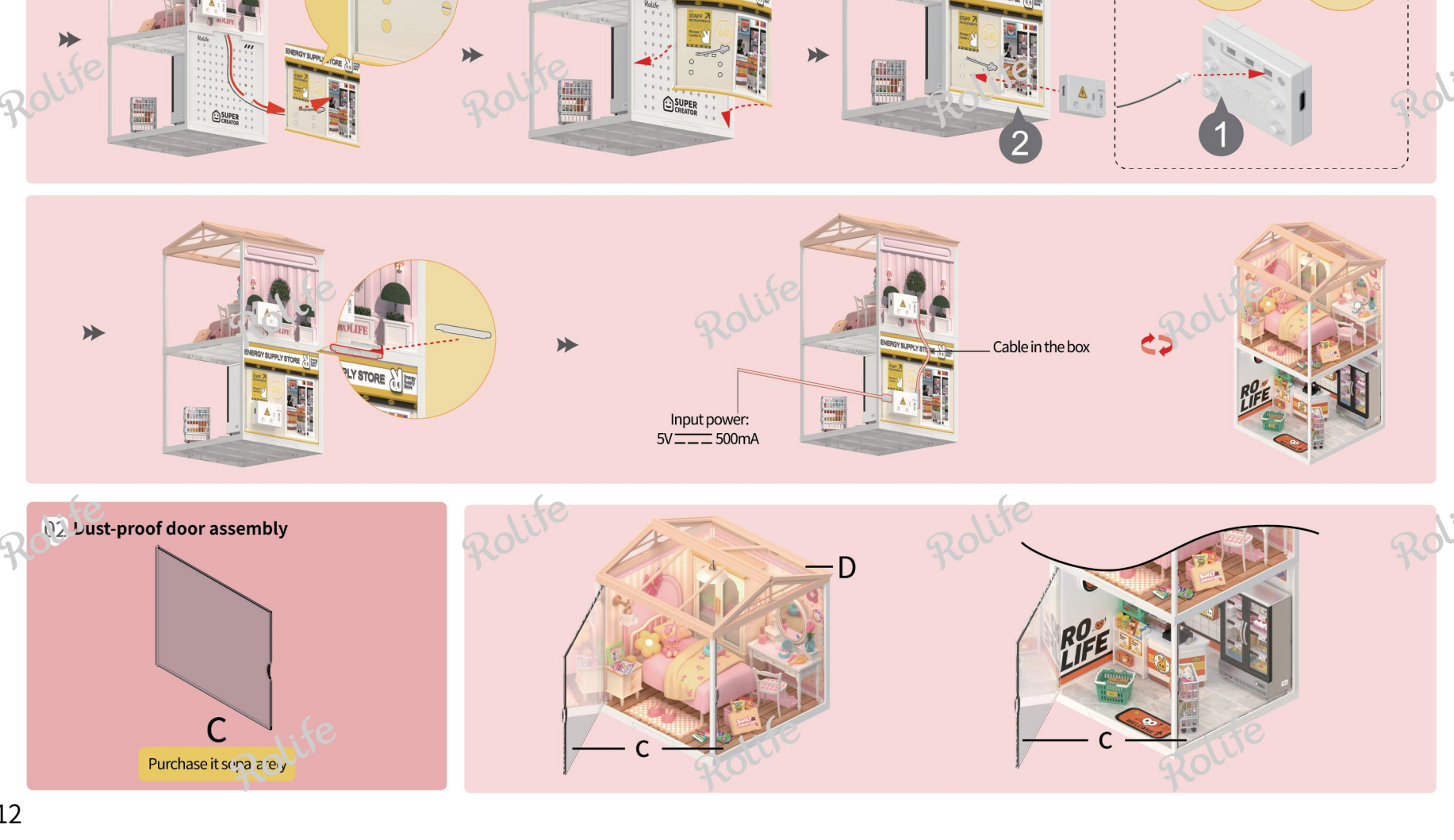
### 04 Data cable instructions (P1)



### 05 Assembling steps



### 06 Add some other tricks



MANUFACTURER: Robotime Co., Ltd.  
AFTER-SALES SERVICE CONTACT: service@robotime.com

