



- WARNING:**
- The instruction includes important information and please keep it well for future reference.
- MAINTENANCE:**
- Keep the product away from the source of ignition and water to prevent any damage.
 - Don't use chemical reagents like alcohol and ammonia water to clean the product.
 - Use clean and soft fabric to clean the product if necessary.

Part list	
Item	Invisible Tape
Part number	P1
Illustration	
Quantity	10

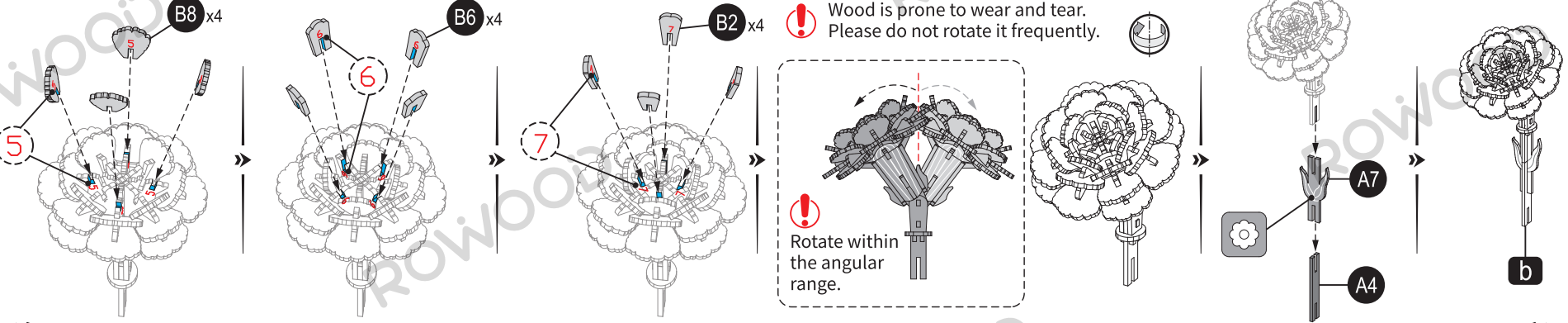
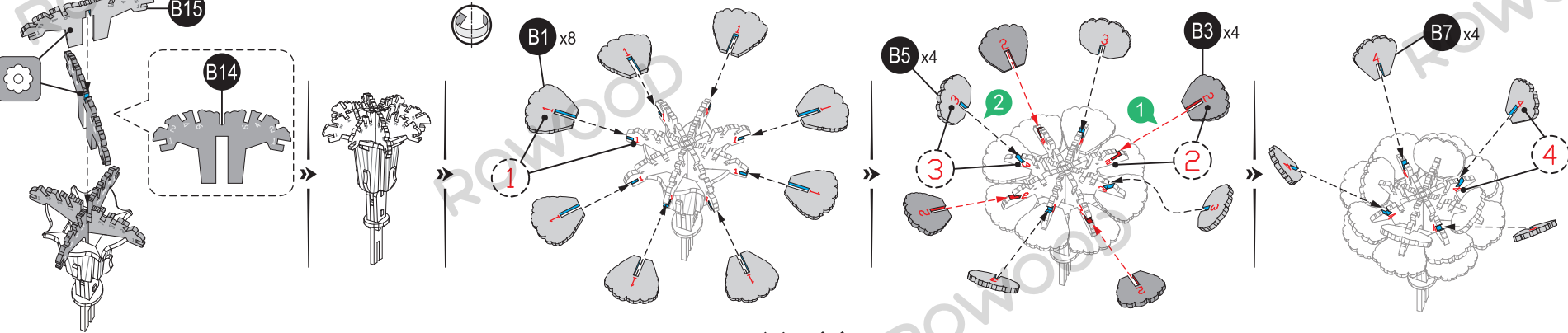
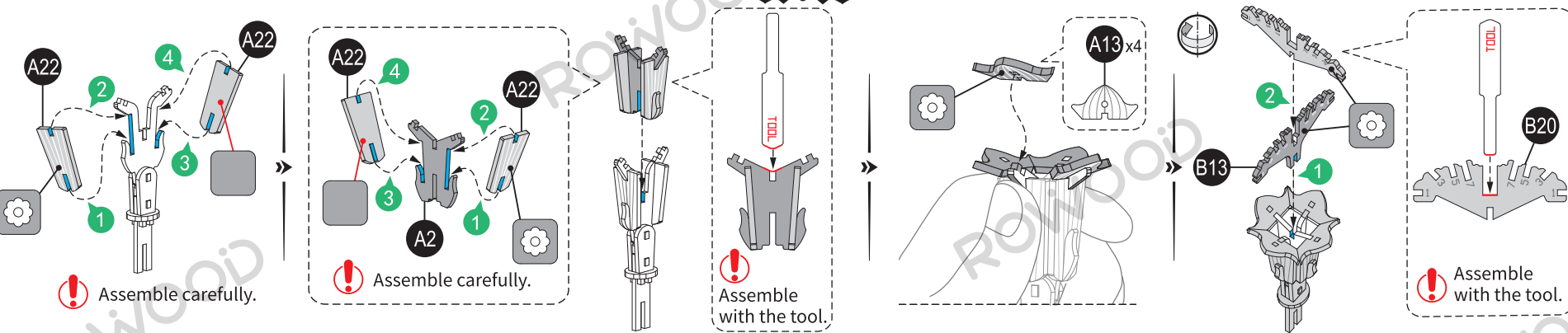
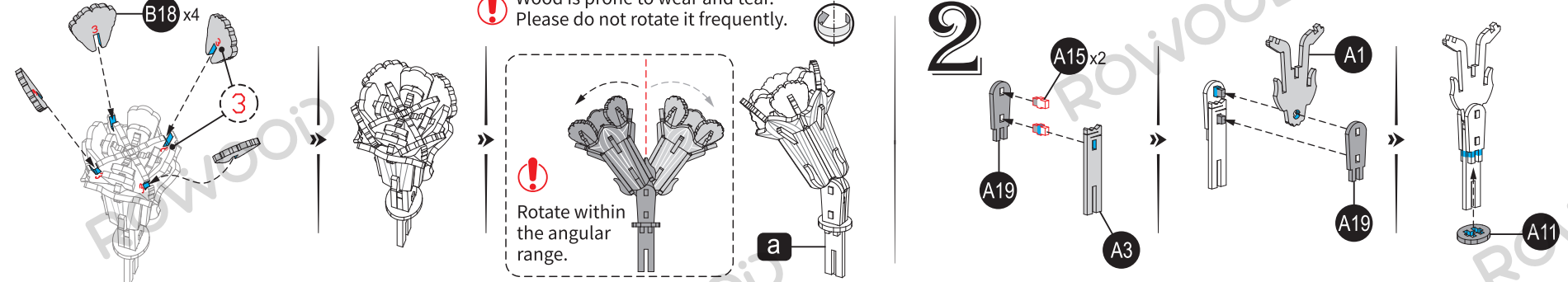
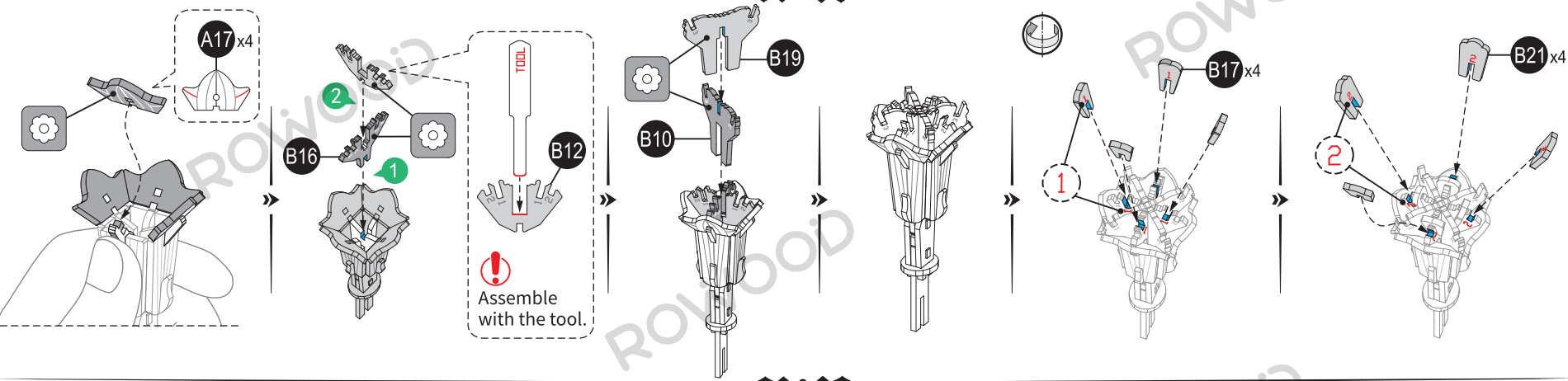
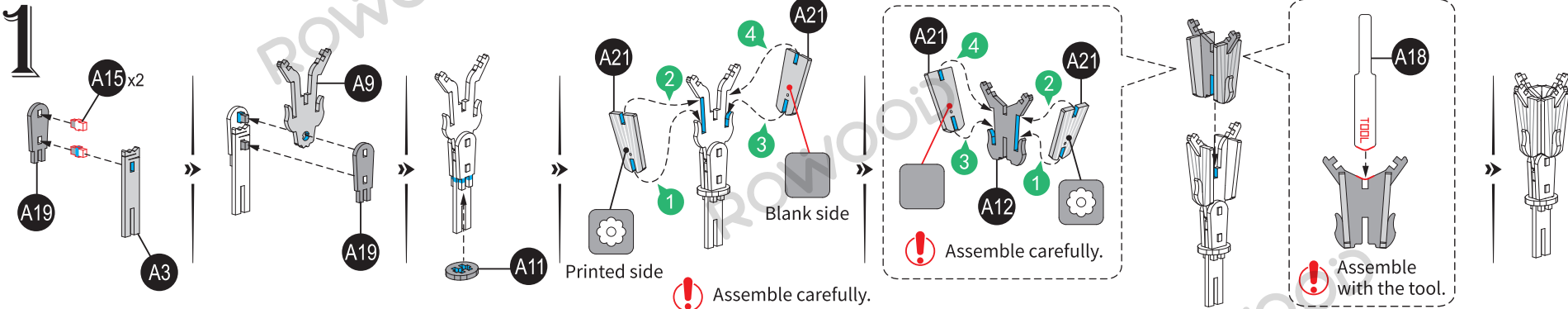


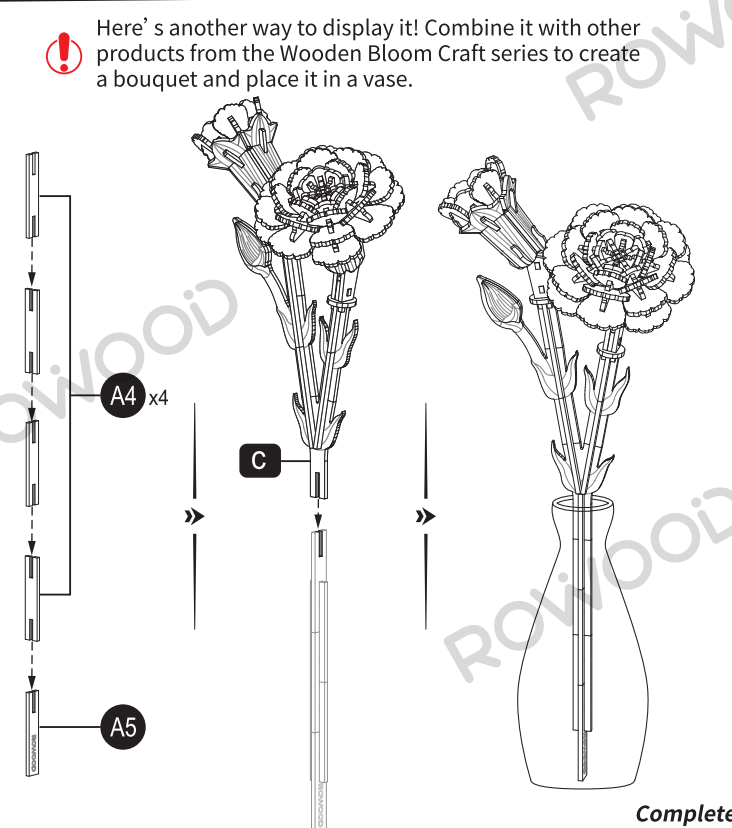
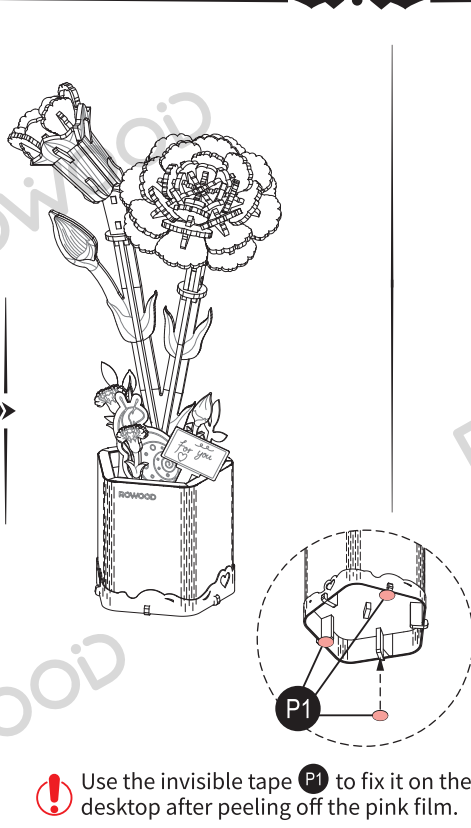
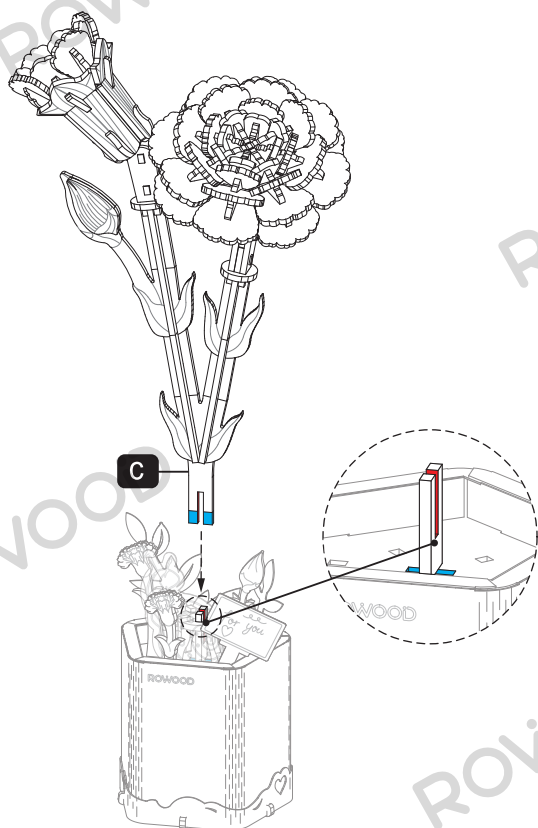
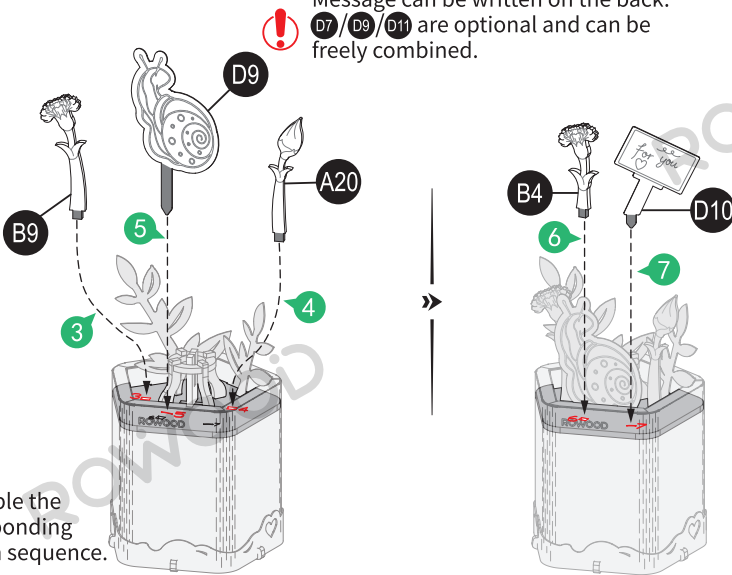
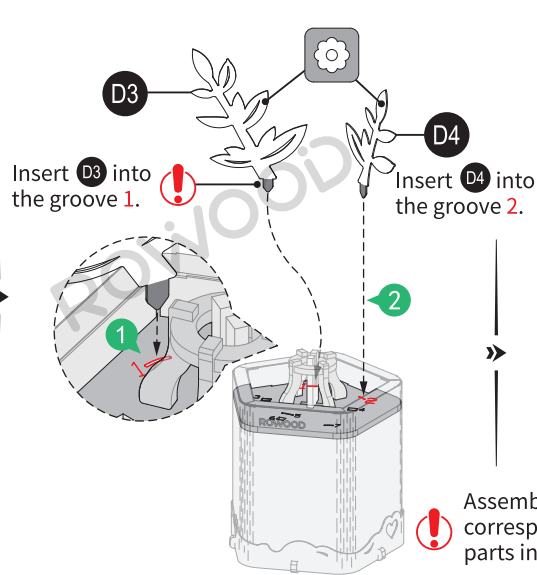
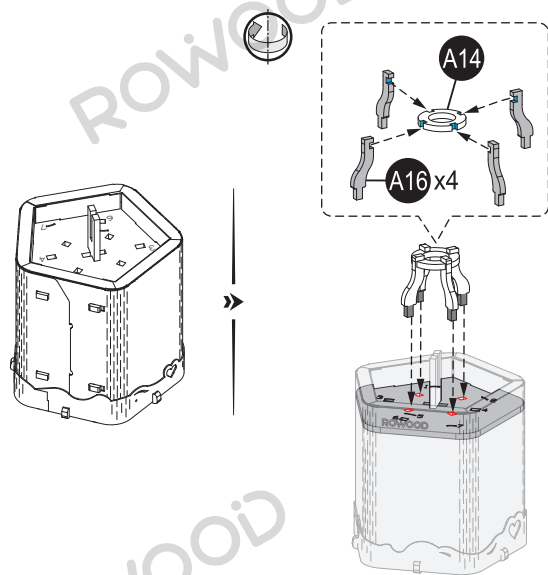
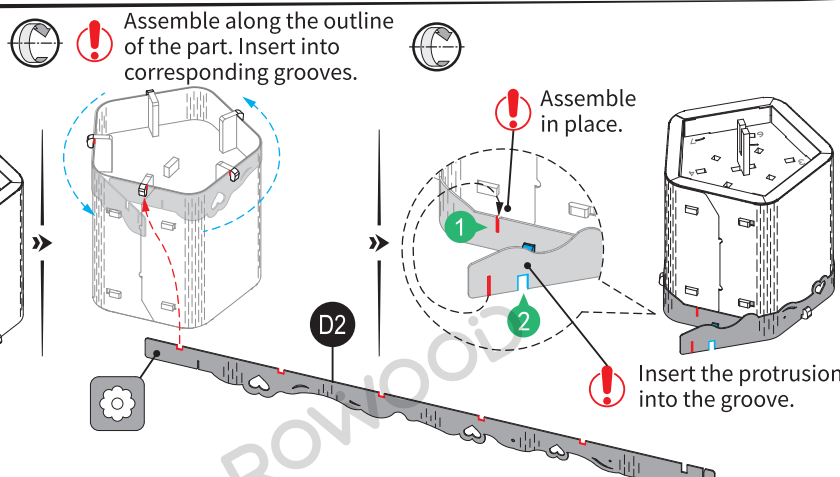
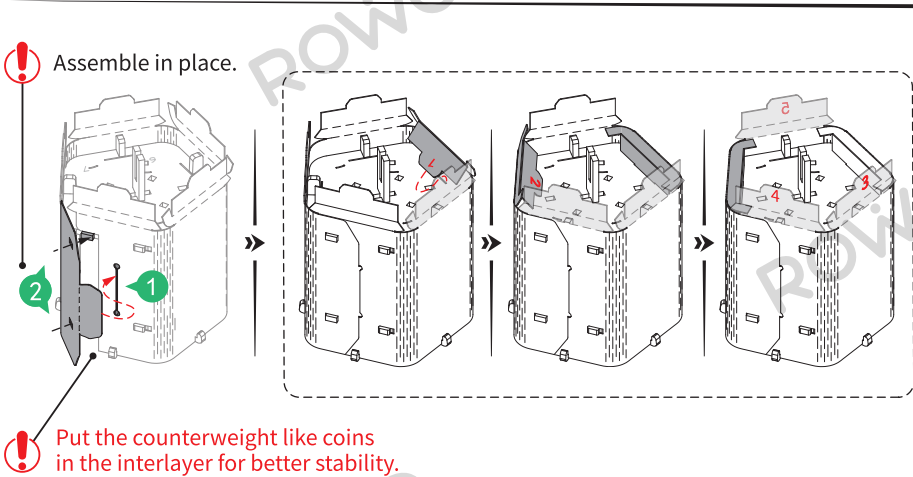
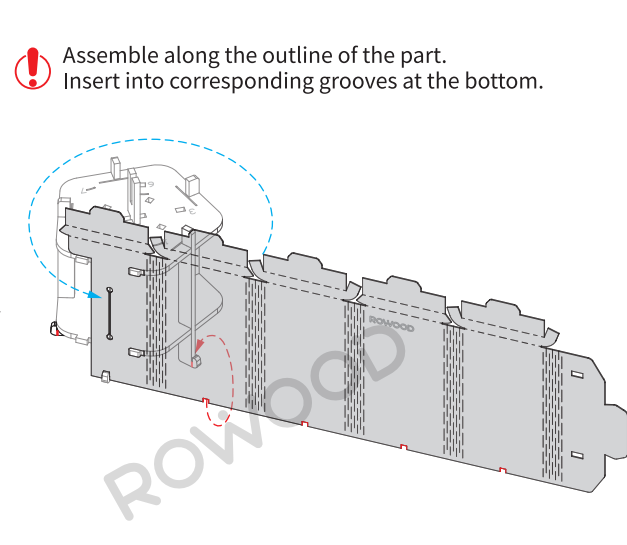
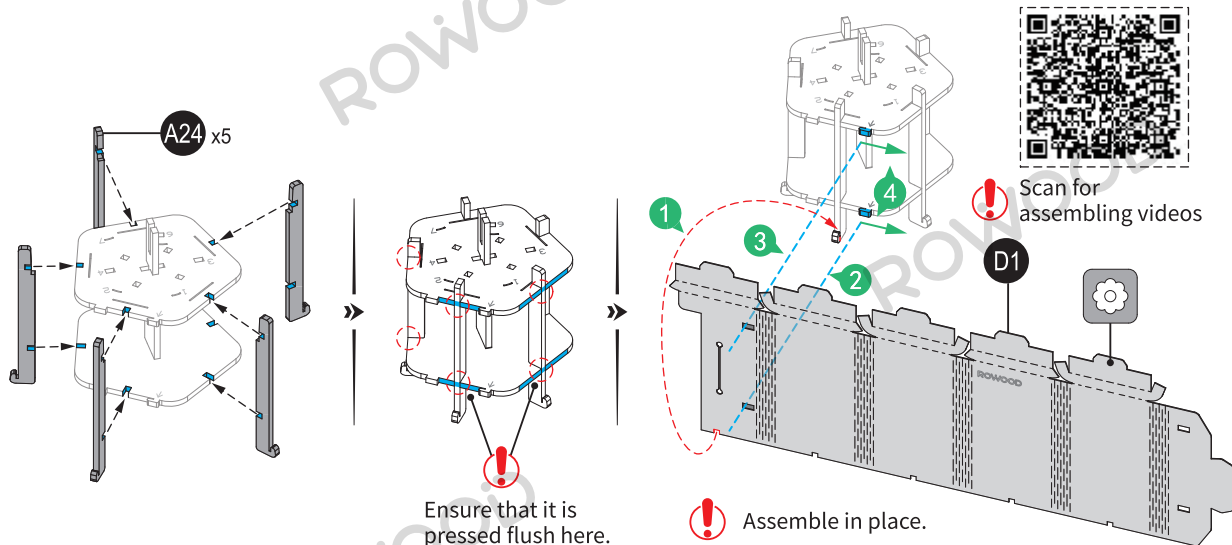
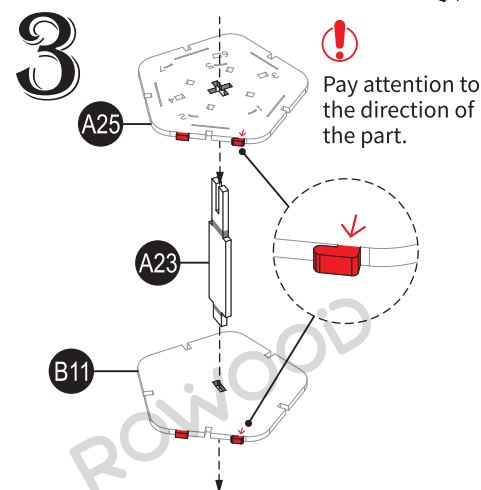
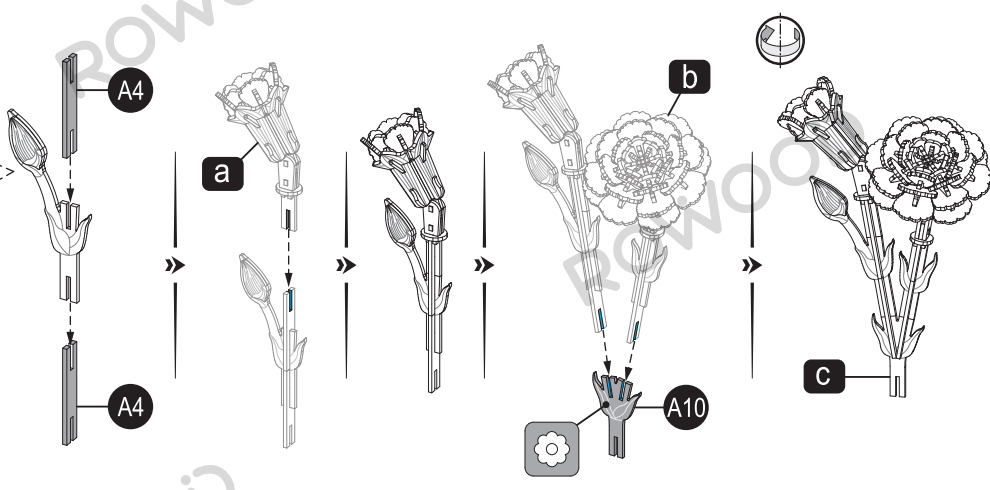
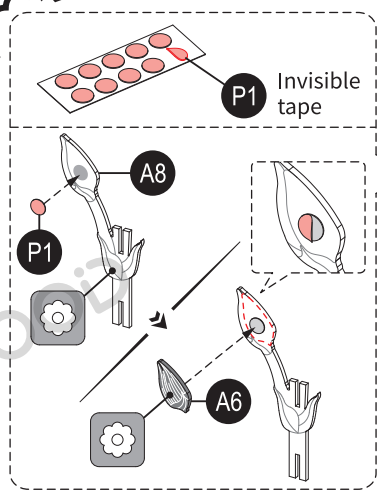
ROKR Facebook



store.robotime.com

- Printed side Blank side Perspective changed Complete 2 same parts Special attention in assembly Step 1 Step 2





Complete.