

WARNING:

- This product is suitable for people aged 8 and above. Children under 8 years old should assemble under the guidance of adults.
- The instruction includes important information and please keep it well for future reference.

MAINTENANCE:

- Keep the product away from the source of ignition and water to prevent any damage.
- Don't use chemical reagents like alcohol and ammonia water to clean the product.
- Use clean and soft fabric to clean the product if necessary.

Part list

Item	Invisible Tape
Part number	P1
Illustration	
Quantity	10



ROKR Facebook



store.robotime.com



Printed side



Blank side



Perspective changed



Complete 2 same parts



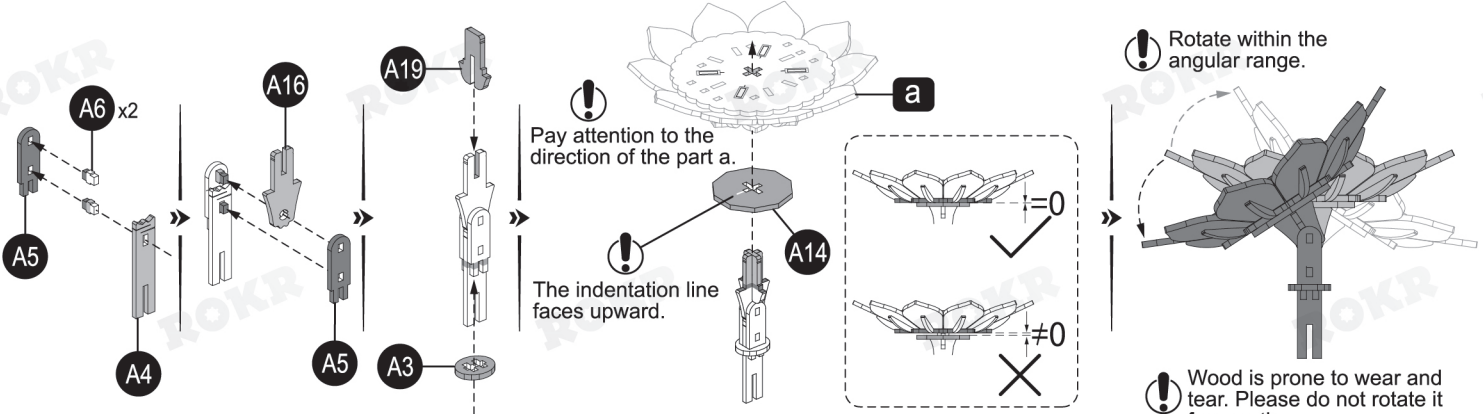
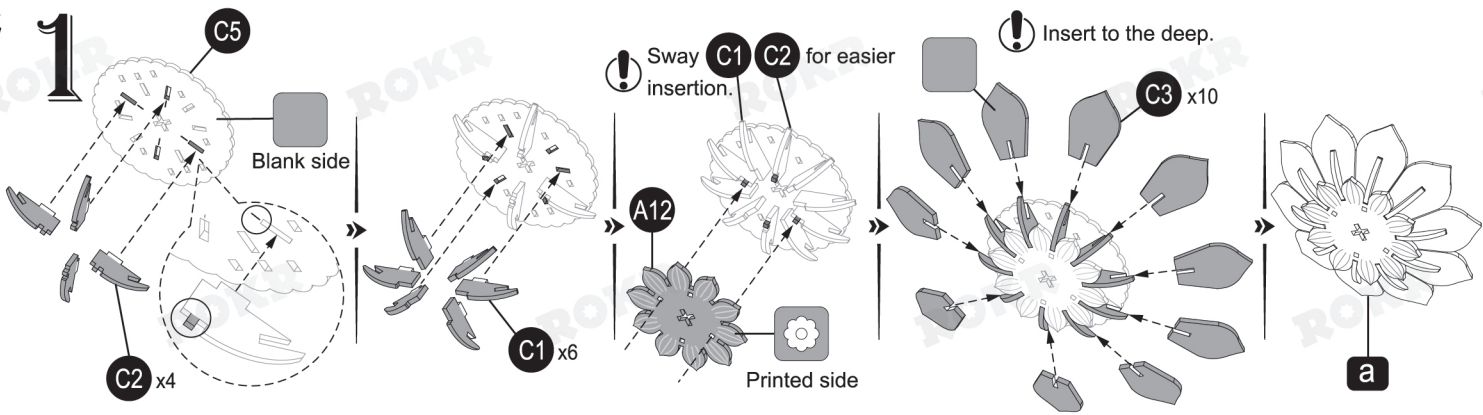
Special attention in assembly



Step 1

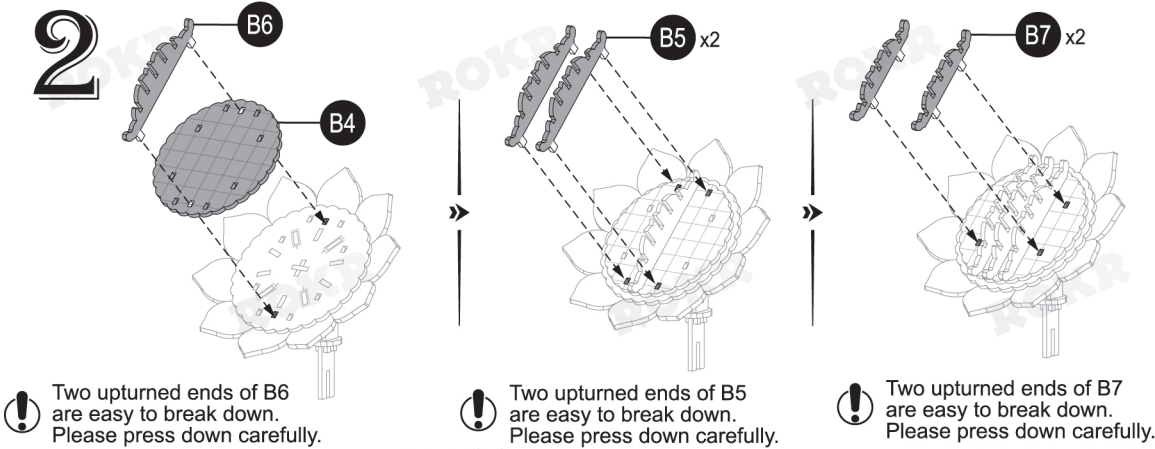


Step 2



Perspective changed

2



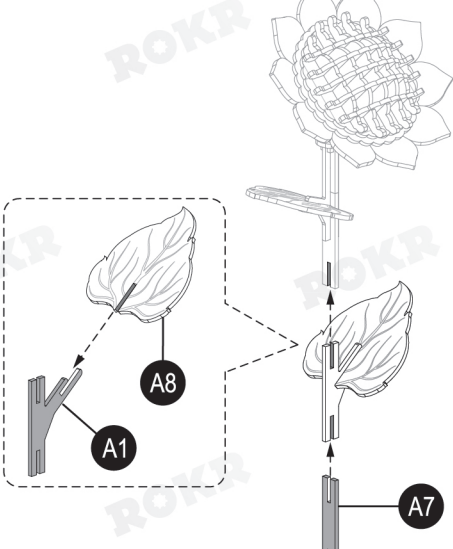
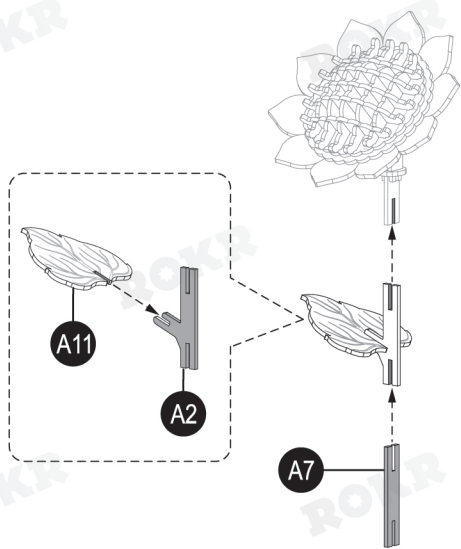
Two upturned ends of B2 are easy to break down. Please press down carefully.



Two upturned ends of B1 are easy to break down. Please press down carefully.

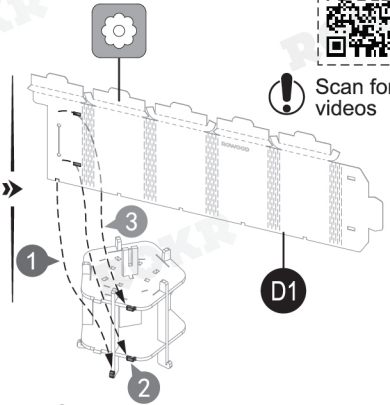
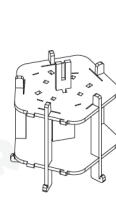
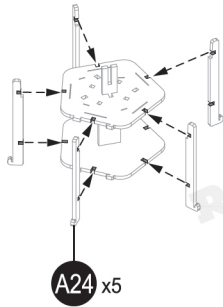
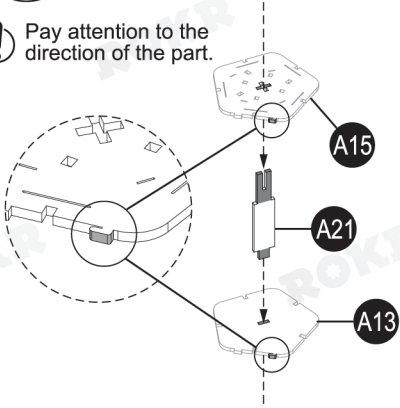


Two upturned ends of B3 are easy to break down. Please press down carefully.



3

! Pay attention to the direction of the part.

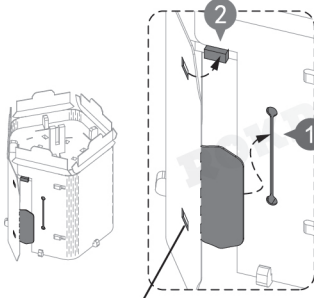
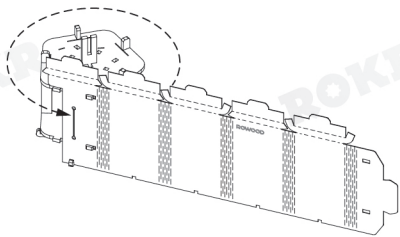


! Scan for assembling videos

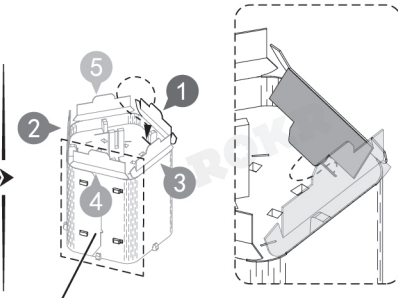
! Keep A13 and A15 in the same direction.

! Assemble in place.

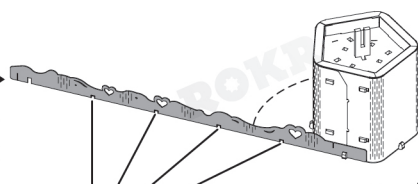
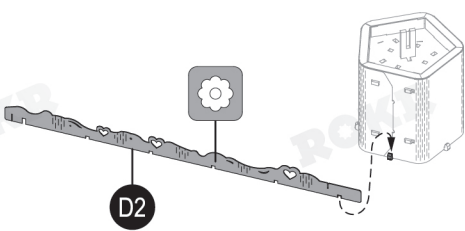
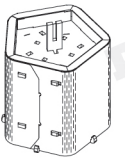
! Assemble along the outline of the part. Insert into corresponding grooves at the bottom.



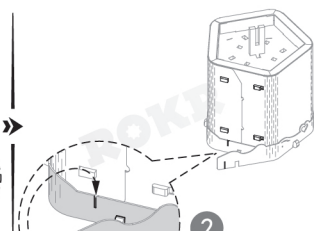
! Assemble in place.



! Refer to this side, the protrusions must be inserted into the gaps in sequence.

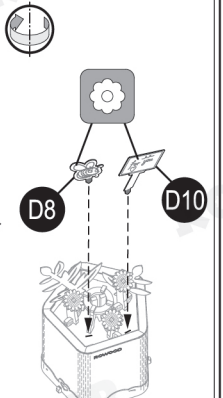
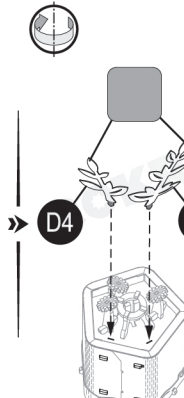
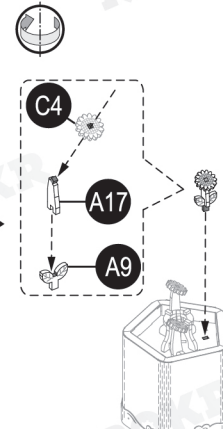
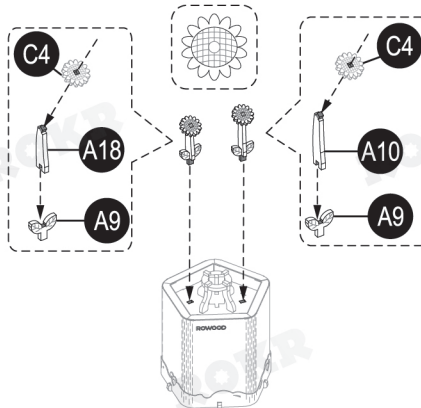
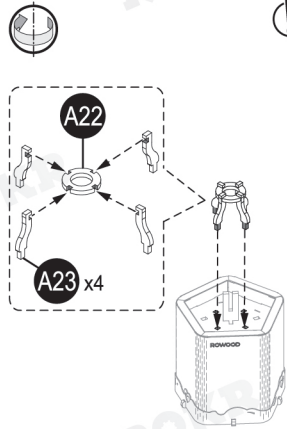


! Assemble along the outline of the part. Insert into corresponding grooves at the bottom.



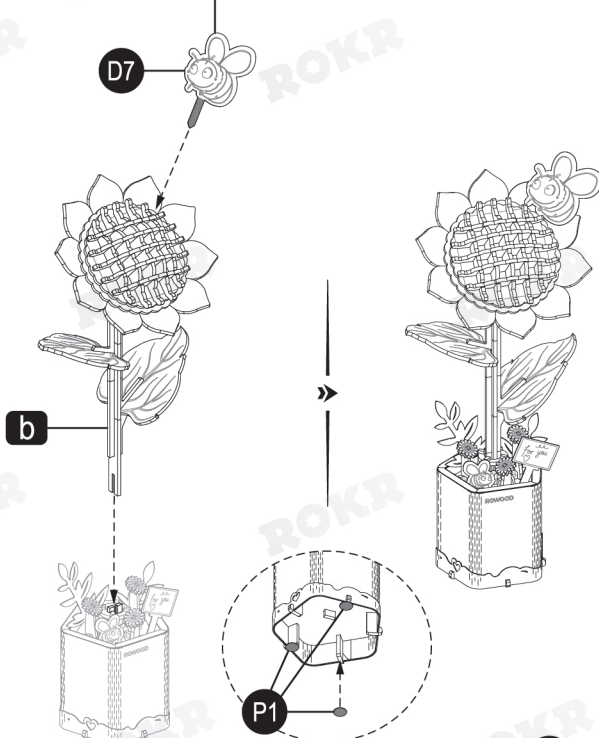
! Insert the protrusion into the groove.
! Assemble in place.

! Pay attention to the direction of C4 patterns.



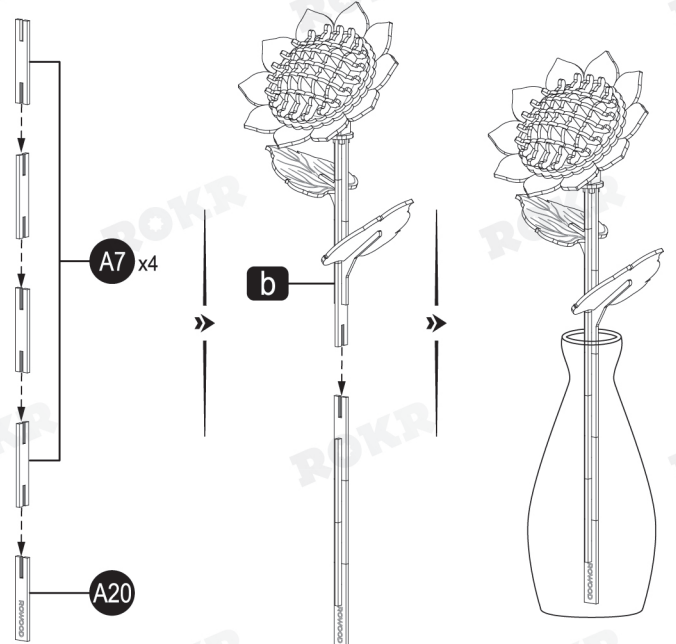
! D5/D6/D8 are optional and can be freely combined.

! Message can be written on the back. D7/D9/D11 are optional and can be freely combined.



! Use the invisible tape P1 to fix it on the desktop after peeling off the pink film.

! Here's another way to display it! Combine it with other products from the Wooden Bloom Craft series to create a bouquet and place it in a vase.



Complete.