

Lilac

TW021 / 154PCS

ROWOOD



WARNING:
• The instruction includes important information and please keep it well for future reference.

MAINTENANCE:
• Keep the product away from the source of ignition and water to prevent any damage.
• Don't use chemical reagents like alcohol and ammonia water to clean the product.
• Use clean and soft fabric to clean the product if necessary.

Part list	
Item	Invisible Tape
Part number	P1
Illustration	
Quantity	10



ROKR Facebook



store.robotime.com



Printed side



Blank side



Perspective changed



Complete 2 same parts



Special attention in assembly



Step 1



Step 2

1

A3

Printed side

A2

C4

C4

a

A13

A5

A4

b

A10

C6

A14

C5

a

b

2

A1

A18

A17

A19

1:1

B12

B13

B11

B9

1:1



Take off parts and arrange them as shown. Use the sandpaper to polish slightly.

3



Pay attention to the directions of the petals on the top and the arrows.

B13

A19

A9

A19

B1

B13

A19

A8

A19

B1



Assemble A1/B12/B13 on pieces marked with a straight line.

Assemble A19 on the piece marked with a circle.



The parts are fragile! Please assemble carefully!



A18

B4

A12

B7

A19

B3

B6

A18

A12

A6

A7

A19

B6

A18

A12

A6

A7

A19



A18

B5

A12

B7

A19

B2

B6

A18

A12

A6

A7

A19



Assemble the remaining flowers according to the density and color preference.

Assemble the flower as preferred.

C13

C3

C2

C8

1

3

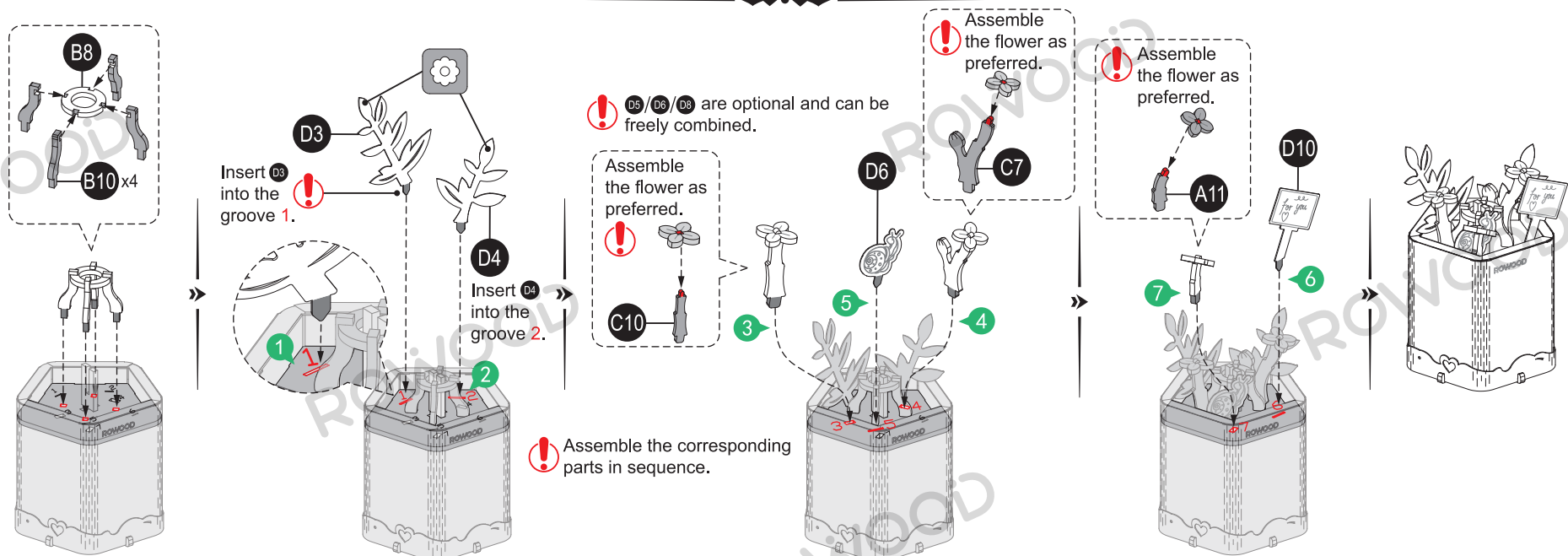
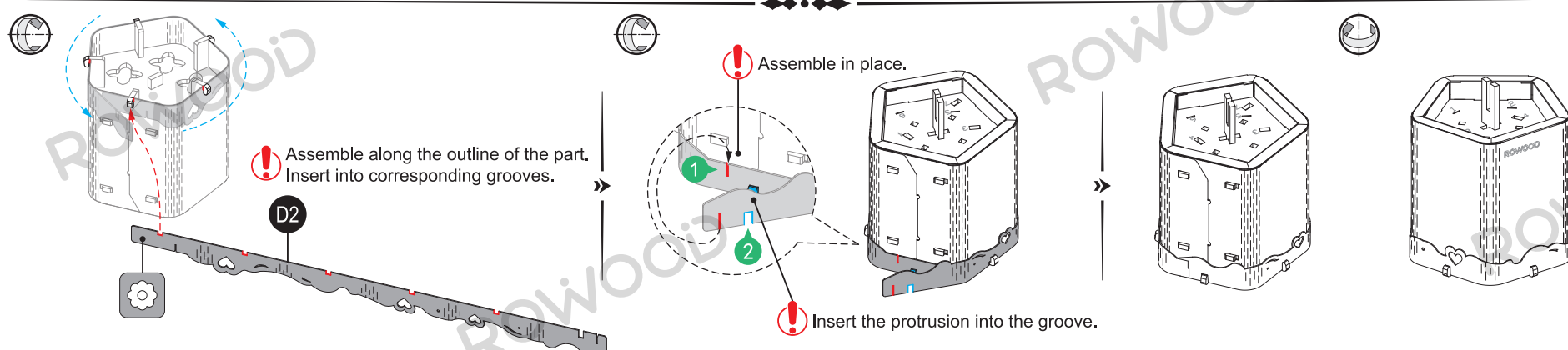
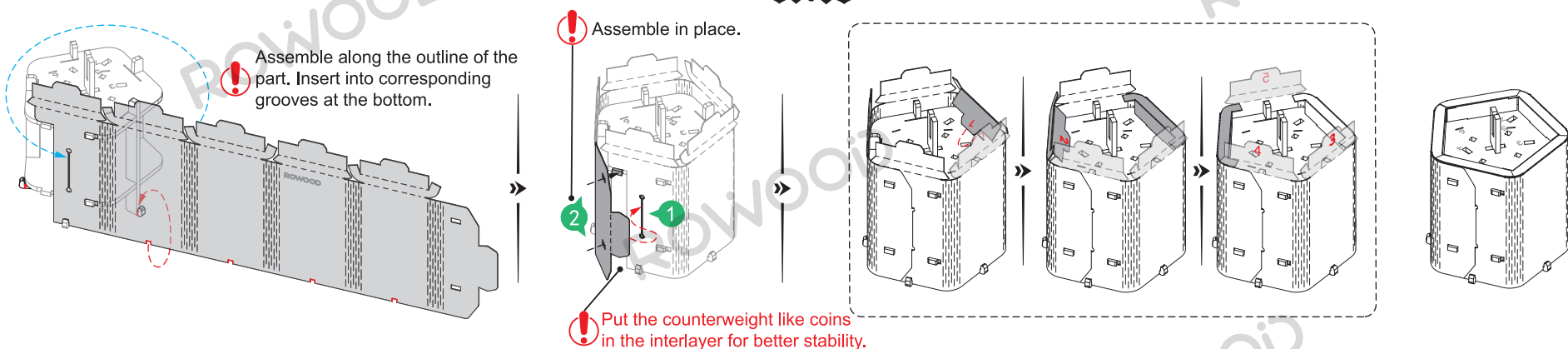
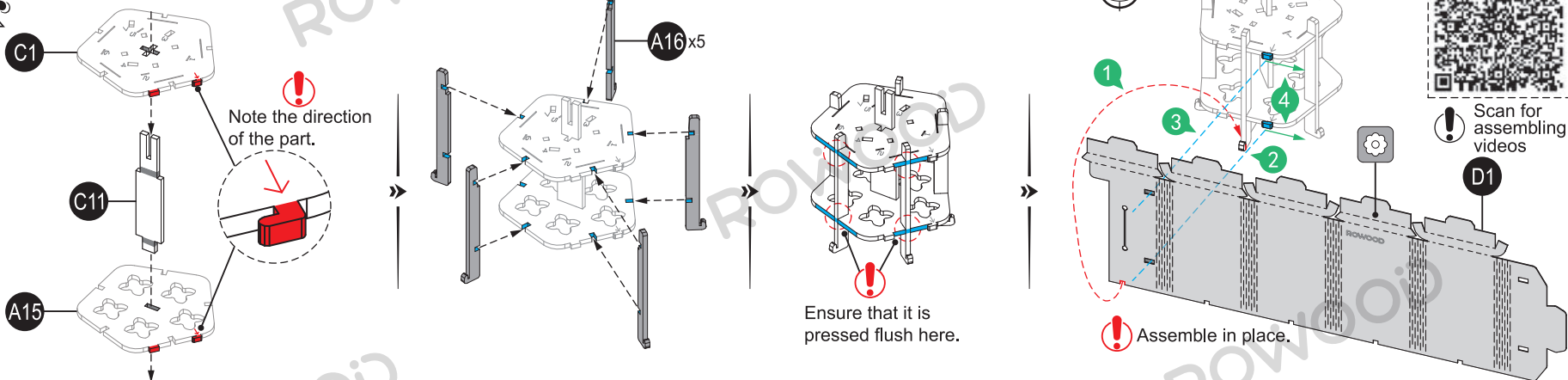
2

4

C9 x2

c

4



Message can be written on the back.
D7/D8/D11 are optional and can be freely combined.

Here's another way to display it! Combine it with other products from the Wooden Bloom Craft series to create a bouquet and place it in a vase.

